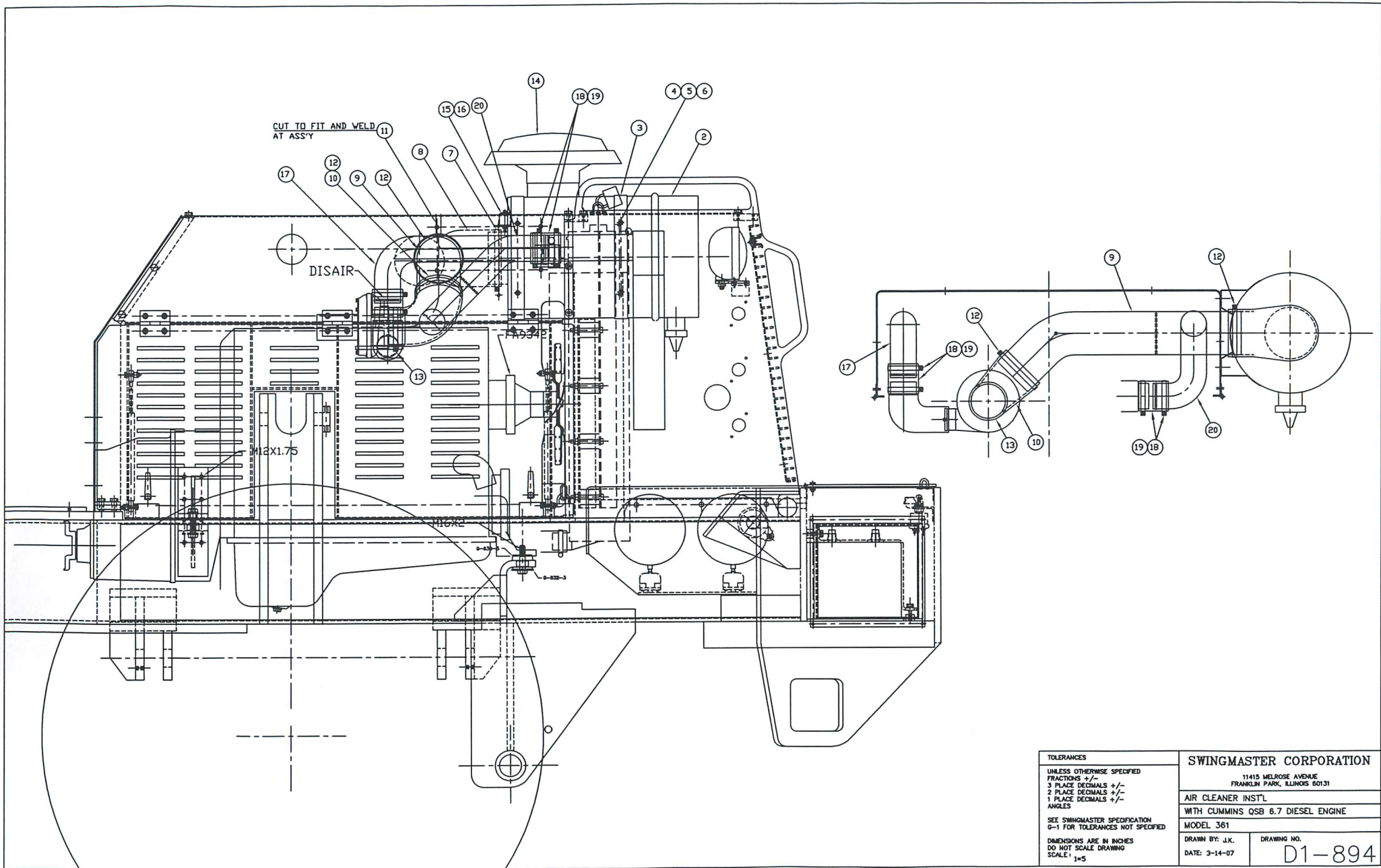




SECTION J
ENGINE AIR INTAKE SYSTEM



CUT TO FIT AND WELD
AT ASS'Y

DISAIR

max 1.75

max 2

TOLERANCES	
UNLESS OTHERWISE SPECIFIED	
FRACTIONS +/-	
3 PLACE DECIMALS +/-	
2 PLACE DECIMALS +/-	
1 PLACE DECIMALS +/-	
ANGLES	
SEE SWINGMASTER SPECIFICATION	
G-1 FOR TOLERANCES NOT SPECIFIED	
DIMENSIONS ARE IN INCHES	
DO NOT SCALE DRAWING	
SCALE: 1=5	

SWINGMASTER CORPORATION	
11415 MELROSE AVENUE FRANKLIN PARK, ILLINOIS 60131	
AIR CLEANER INST'L	
WITH CUMMINS QSB 6.7 DIESEL ENGINE	
MODEL 361	
DRAWN BY: J.K.	DRAWING NO.
DATE: 3-14-07	D1-894

MACHINE

SECTION

10

MODEL 361 SWINGLOADER

ENGINE AIR INTAKE SYSTE

ASSEMBLY
NUMBER

DESCRIPTION

1806709 AIR CLEANER INSTALLATION

ITEM NO.	PART NUMBER	DESCRIPTION	QTY USED
2	1802813	AIR CLEANER	1
3	1802812	AIR CLEANER MOUNTING BRACKET	2
4	1805307	HHCS 7/16-14X3/4"LG	4
5	1802557	HEX NUT 7/16-14	4
6	1800569	7/16" LOCK WASHER	4
7	1805562	CLAMP	1
8	1803336	90 DEG. RUBBER ELBOW - 5" TO 6"	1
9	1806158	TUBE WELDMENT	1
10	1803335	90 DEG. RUBBER ELBOW - 4" TO 5"	1
11	1805762	STRAP HANGER CLAMP	1
12	1805564	CLAMP	2
13	1800690	4 3/4" HOSE CLAMP	1
14	1802811	AIR CLEANER LID	1
15	1805266	INFORMER GAGE BNSPL	1
16	1800201	FILTER ADAPTER	1
17	1806985	L.H. CAC TUBE WLD'T	1
18	1806376	SIL. HOSE-3" LONG	4
19	1806269	CLAMP	8
20	1806986	R.H. CAC. TUBE WLD'T	1