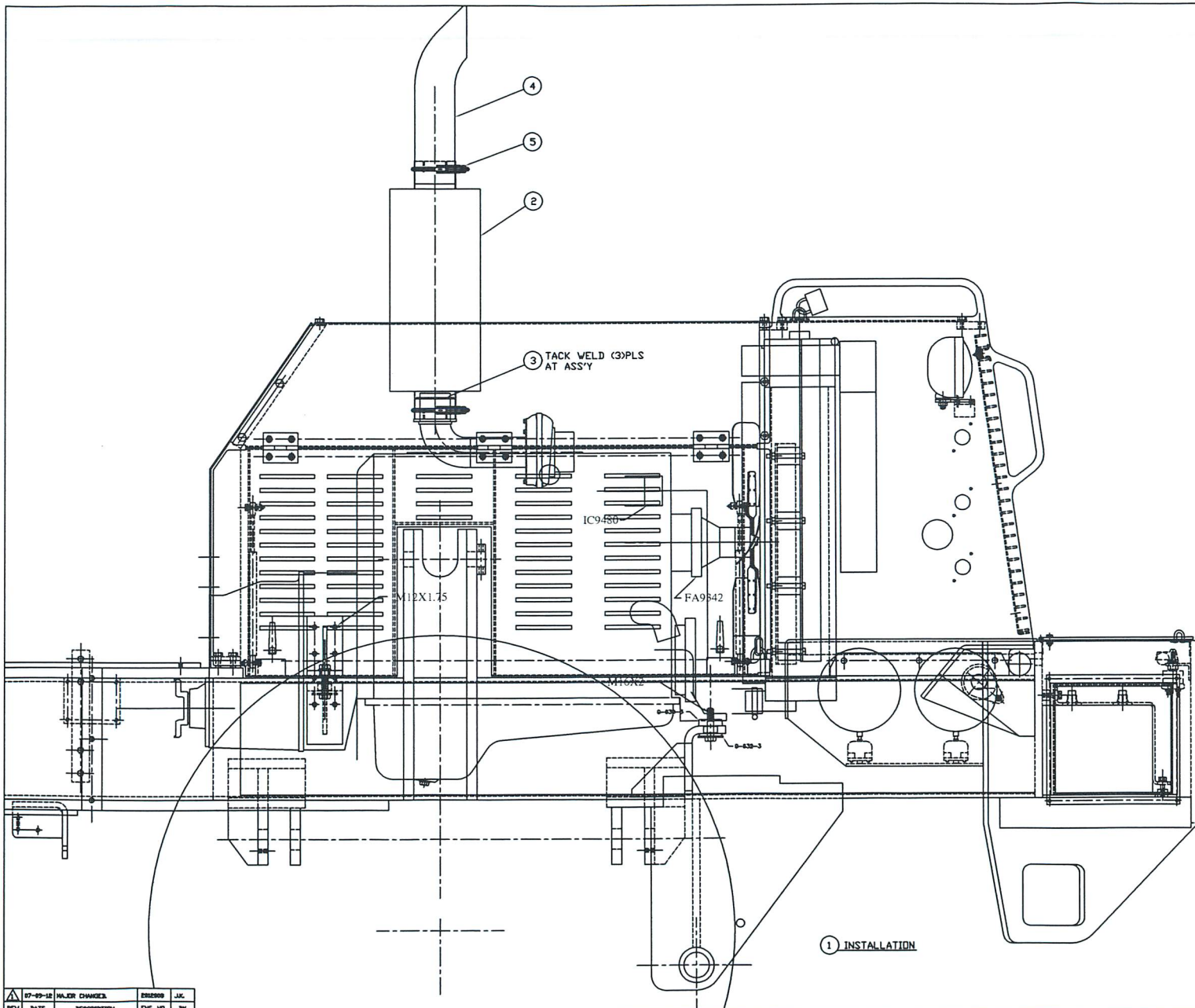




SECTION K
ENGINE EXHAUST SYSTEM



<p>TOLERANCES</p> <p>UNLESS OTHERWISE SPECIFIED</p> <p>FRACTIONS +/-</p> <p>3 PLACE DECIMALS +/-</p> <p>2 PLACE DECIMALS +/-</p> <p>1 PLACE DECIMALS +/-</p> <p>ANGLES</p> <p>SEE SWINGMASTER SPECIFICATION</p> <p>G-1 FOR TOLERANCES NOT SPECIFIED</p> <p>DIMENSIONS ARE IN INCHES</p> <p>DO NOT SCALE DRAWING</p> <p>SCALE: 1=5</p>	<p>SWINGMASTER CORPORATION</p> <p>730 INDUSTRIAL DRIVE</p> <p>ELMHURST, ILLINOIS 60126</p>	
	<p>MUFFLER INSTALLATION</p>	
	<p>WITH CUMMINS QSB 6.7 DIESEL ENGINE</p>	
	<p>MODEL 361</p>	<p>DRAWING NO.</p> <p>D2-888</p>

<p>07-09-12 MAJOR CHANGES</p> <p>080200 J.K.</p>
<p>REV DATE DESCRIPTION ENG. NO. BY</p>

6707

MACHINE SECTION 11

MODEL 361 SWINGLOADER ENGINE EXHAUST SYSTEM

ASSEMBLY
NUMBER DESCRIPTION

1806707 MUFFLER INSTALLATION

ITEM NO.	PART NUMBER	DESCRIPTION	QTY USED

2	1806987	MUFFLER	1
3	1806981	EXHAUST ADAPTER	1
4	1803342	4" I.D. X 18" LONG CURVED STACK	1
5	1803944	MUFFLER CLAMP - 4 1/8"	1