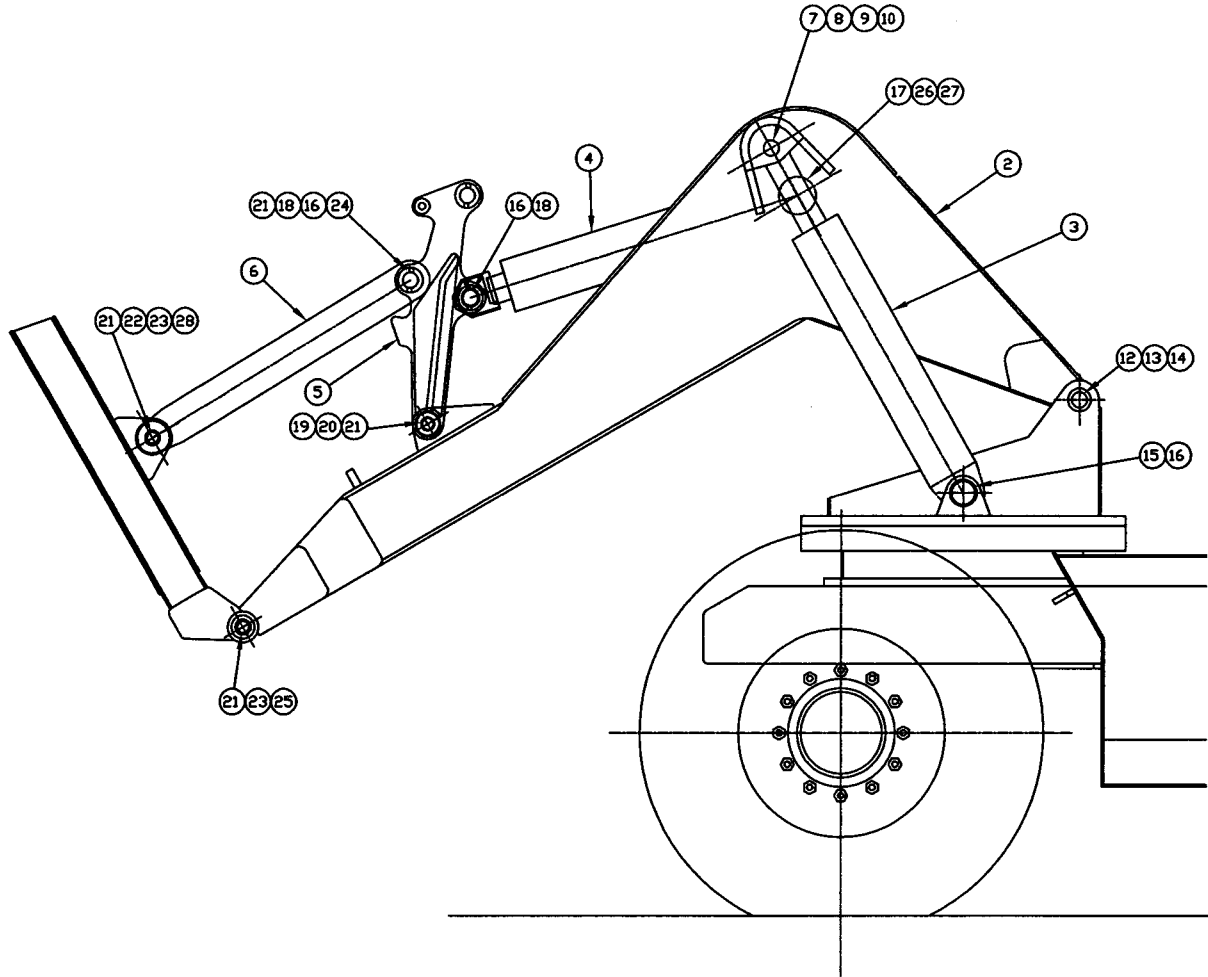




BOOM



① INSTALLATION

<p>TOLERANCES UNLESS OTHERWISE SPECIFIED FRACTIONS +/- 3 PLACE DECIMALS +/- 2 PLACE DECIMALS +/- 1 PLACE DECIMALS +/- ANGLES</p> <p>SEE SWINGMASTER SPECIFICATION 0-1 FOR TOLERANCES NOT SPECIFIED</p> <p>DIMENSIONS ARE IN INCHES DO NOT SCALE DRAWING SCALE: 1/4"=1'-0"</p>	SWINGMASTER CORPORATION	
	11415 MELROSE AVE FRANKLIN PARK, ILLINOIS 60131	
	MAIN BOOM INSTALLATION	
	MODEL 181	
DRAWN BY: J.K. DATE: 9-28-82	DRAWING NO. D1-57	

SWINGMASTER CORPORATION

PARTS BOOK

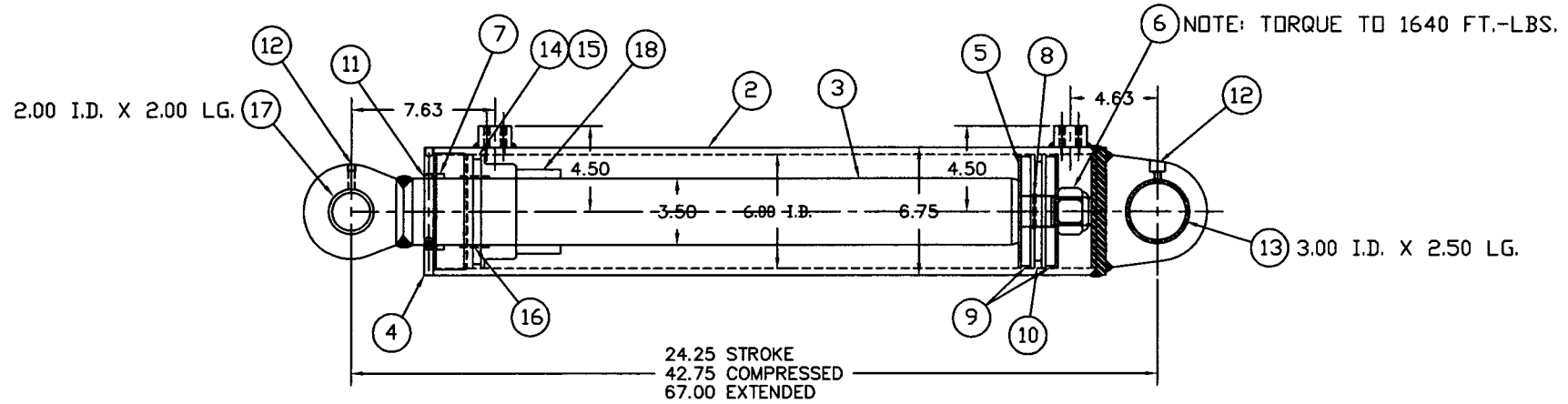
MACHINE SECTION 23

MODEL 181 SWINGLOADER BOOM

ASSEMBLY NUMBER	DESCRIPTION
1804820	MAIN BOOM INSTALLATION

ITEM NO.	PART NUMBER	DESCRIPTION	QTY USED
2	1800104	MAIN BOOM WELDMENT - 181	1
3	1800372	LIFT CYLINDER	2
4	1801429	BUCKET CYLINDER	1
5	1804824	BUCKET LEVER ASSEMBLY	1
6	1804821	BUCKET LINK	1
7	1800122	PIN - BOOM CYLINDER	1
8	1800125	PIN - BOOM CYLINDER	1
9	1800124	LOCK PLATE	2
10	1800459	H.H.C.S. 3/8-16 X 1 3/4" LONG	4
11	1800568	3/8" LOCK WASHER	4
12	1800584	2" DIA X 7 3/8" LG PIN W/ LUB. HOLES	2
13	1800475	H.H.C.S. 1/2-13 X 4" LONG	2
14	1800516	ESNA HEX NUT 1/2-13	2
15	1800596	3" DIA X 5 7/8" LONG PIN	2
16	1804327	COTTER PIN - 1/2" DIA. X 6" LONG	4
17	1800123	PIN - BOOM 3" X 13" LG.	1
18	1804823	PIN - 2.00"DIA.X7.50"LG	2
19	1800590	1 1/2" DIA X 9 3/4" LG PIN W/ LUB. HOLES	1
20	1800582	COTTER PIN 3/8 X 4" LONG	1
21	1800663	STRAIGHT 1/8" MALE-PIPE GREASE FITTING	5
22	1800588	1 1/2" DIA X 8" LONG PIN	1
23	1800581	COTTER PIN 3/8 X 3 1/2" LONG	3
24	1804822	BUSHING	1
25	1801562	1 1/2" DIA. X 8 3/4" LONG PIN	2
26	1802724	H.H.C.S. 1/2-13 X 4 1/2" LONG	1
27	1800516	ESNA HEX NUT 1/2-13	1
28	1801425	BRONZE BUSHING 1 1/2" ID X 2" OD	1

RATED PRESSURE : 1850 PSI
 OVERLOAD RELIEF PRESSURE: 3000 PSI



① ASSEMBLY

NOTE:
 MODEL 181T : CONVERTS FROM 2007 SERIAL NUMBER.

TOLERANCES UNLESS OTHERWISE SPECIFIED FRACTIONS +/- 3 PLACE DECIMALS +/- 2 PLACE DECIMALS +/- 1 PLACE DECIMALS +/- ANGLES SEE SWINGMASTER SPECIFICATION 0-1 FOR TOLERANCES NOT SPECIFIED DIMENSIONS ARE IN INCHES DO NOT SCALE DRAWING SCALE: 1/4	SWINGMASTER CORPORATION 11415 MELROSE AVENUE FRANKLIN PARK, ILLINOIS 60131	
	LIFT CYLINDER	
	MODEL 181T	
	DRAWN BY: J.K.	DRAWING NO. D-59N
DATE: 12-08-06		

Δ 12-12-06 MAJOR CHANGE FROM D-59 2006403 J.K.
REV DATE DESCRIPTION ENG. NO. BY

SWINGMASTER CORPORATION

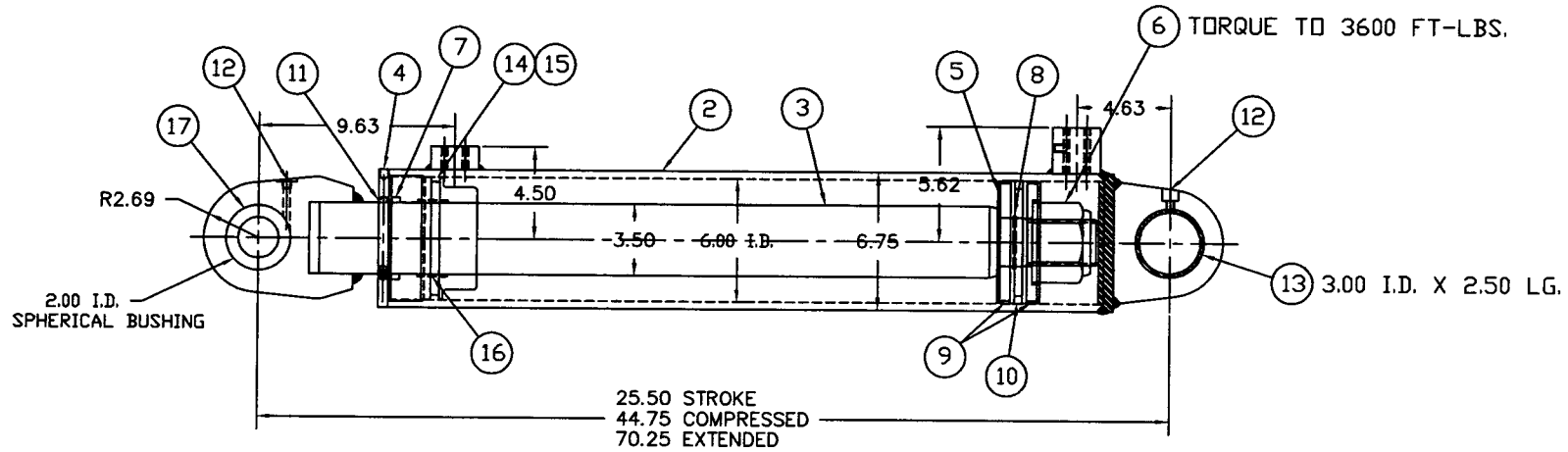
PARTS BOOK

MACHINE	SECTION	23
MODEL 181 SWINGLOADER	BOOM	

ASSEMBLY NUMBER	DESCRIPTION
1806624	LIFT CYLINDER ASS'Y

ITEM NO.	PART NUMBER	DESCRIPTION	QTY USED
002	1806625	CASE WLDM'T	1
003	1806626	ROD WLDM'T	1
004	1806627	CAP	1
005	1806628	PISTON	1
006	1806630	ESNA NUT 1 1/2-12	1
007	1806444	ROD SEAL	1
008	1806623	"O" RING	1
009	1806446	WEAR RING	2
010	1806447	PISTON SEAL	1
011	1806448	WIPER	1
012	1800663	STRAIGHT 1/8" MALE-PIPE GREASE FITTING	2
013	8700601	BUSHING - 3" I.D. X 2-1/2" LG.	1
014	1806450	O-RING	1
015	1806451	BACKUP RING	1
016	1806452	WEAR RING	3
017	8700602	BUSHING - 2" I.D. X 2" LG.	1
018	1806629	SPACER	1

RATED PRESSURE : 1850 PSI
 OVERLOAD RELIEF PRESSURE: 3000 PSI



1 ASSEMBLY

NOTE:
 MODEL 181T : CONVERTS FROM 2007 SERIAL NUMBER.

TOLERANCES UNLESS OTHERWISE SPECIFIED FRACTIONS +/- 3 PLACE DECIMALS +/- 2 PLACE DECIMALS +/- 1 PLACE DECIMALS +/- ANGLES SEE SWINGMASTER SPECIFICATION 0-1 FOR TOLERANCES NOT SPECIFIED DIMENSIONS ARE IN INCHES DO NOT SCALE DRAWING SCALE: 1/4	SWINGMASTER CORPORATION 11415 MELROSE AVENUE FRANKLIN PARK, ILLINOIS 60131
	ATTACHMENT CYLINDER
	MODEL 181T
	DRAWN BY: J.K. DATE: 12-08-06

12-12-06	MAJOR CHANGED FROM 01-60.	2006004	J.K.
REV	DATE	DESCRIPTION	ENG. NO. BY

SWINGMASTER CORPORATION

PARTS BOOK

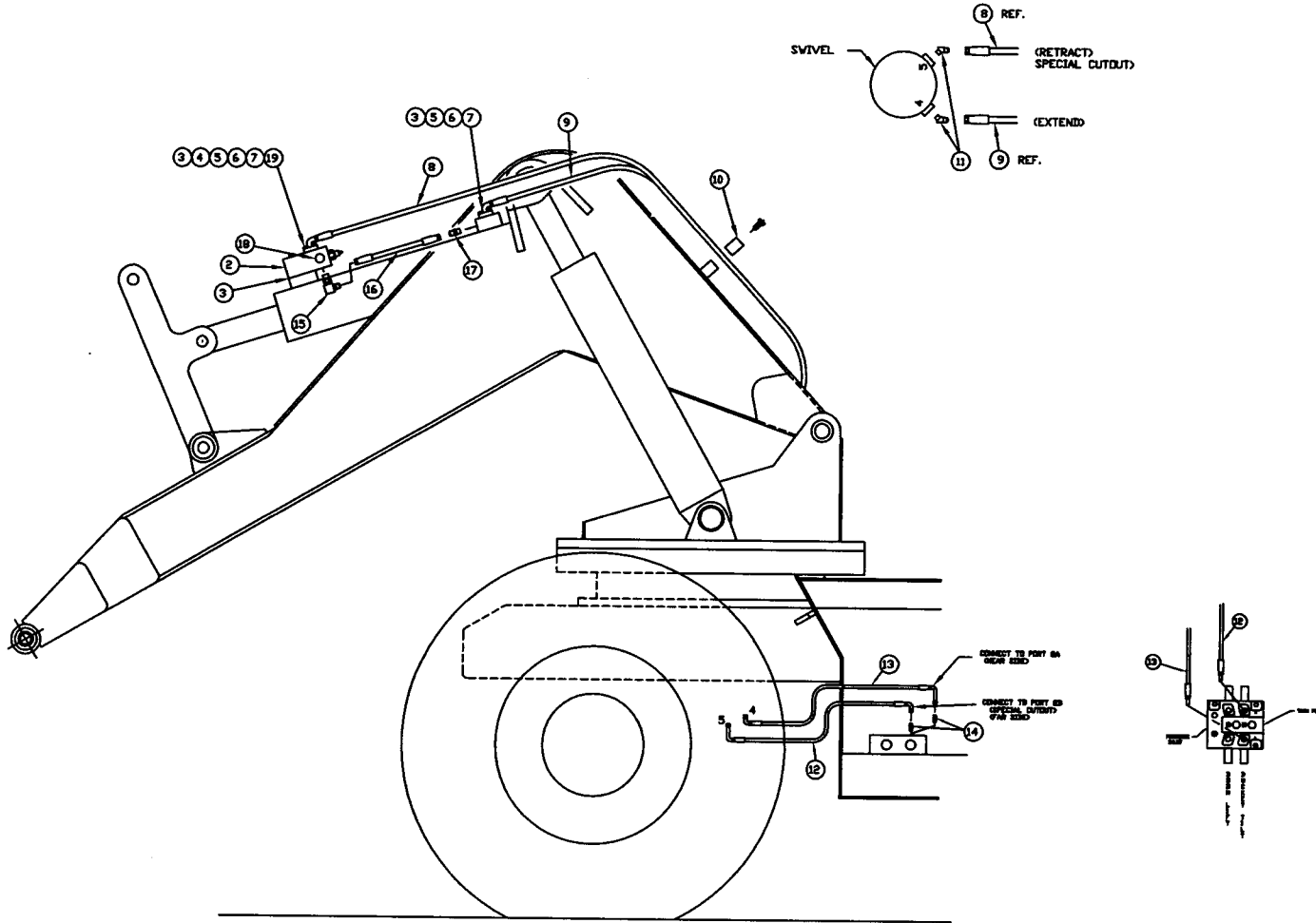
MACHINE	SECTION	23
MODEL 181 SWINGLOADER	BOOM	

ASSEMBLY NUMBER	DESCRIPTION
1806631	ATTACHMENT CYLINDER ASS'Y

ITEM NO.	PART NUMBER	DESCRIPTION	QTY USED
002	1806632	CASE WLDM'T	1
003	1806633	ROD WLDM'T	1
004	1806627	CAP	1
005	1806634	PISTON	1
006	1801984	ESNA HEX NUT 2 1/4 - 4 1/2	1
007	1806444	ROD SEAL	1
008	1806445	O-RING	1
009	1806446	WEAR RING	2
010	1806447	PISTON SEAL	1
011	1806448	WIPER	1
012	1800663	STRAIGHT 1/8" MALE-PIPE GREASE FITTING	2
013	8700601	BUSHING - 3" I.D. X 2-1/2" LG.	1
014	1806450	O-RING	1
015	1806451	BACKUP RING	1
016	1806452	WEAR RING	3
017	1806449	SPHERICAL BUSHING	1

SWINGMASTER CORPORATION
11415 MELROSE AVENUE
FRANKLIN PARK, ILLINOIS 60131

April 22, 2010
TEL: (847) 451-1224



1 INSTALLATION

TOLERANCES UNLESS OTHERWISE SPECIFIED FRACTIONS +/- 3 PLACE DECIMALS +/- 2 PLACE DECIMALS +/- 1 PLACE DECIMALS +/- ANGLES	SWINGMASTER CORPORATION 11415 MELROSE AVENUE FRANKLIN PARK, ILLINOIS 60131	
	BUCKET (ATTACHMENT) TILT CYLINDER LINES AND FITTINGS	
SEE SWINGMASTER SPECIFICATION D-1 FOR TOLERANCES NOT SPECIFIED DIMENSIONS ARE IN INCHES DO NOT SCALE DRAWING SCALE: 1/4"=1"	DRAWN BY: B.W. DATE: 2-19-88	DRAWING NO. D-72

3	9-13-91
REV. NO.	DATE

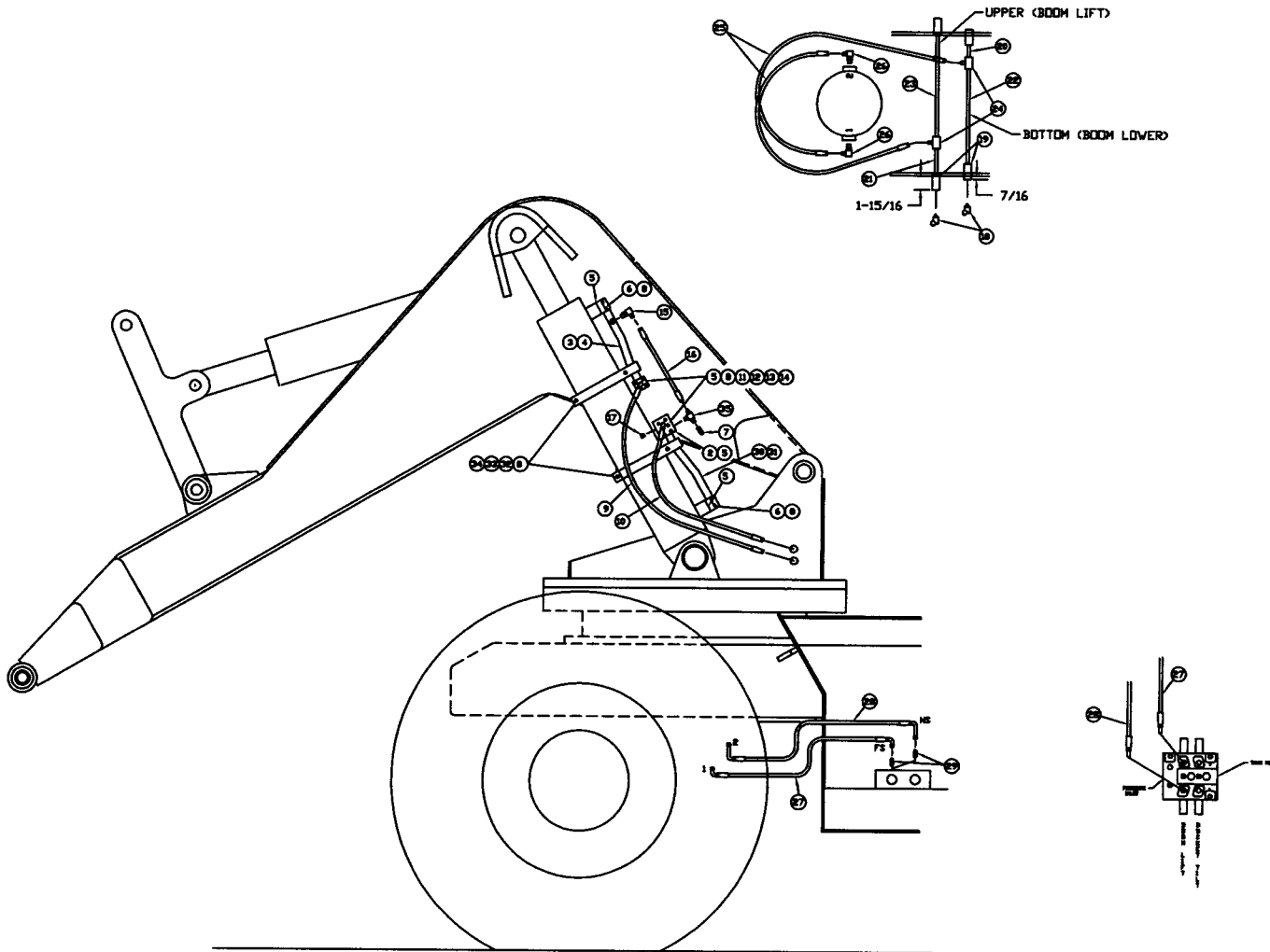
SWINGMASTER CORPORATION

PARTS BOOK

MACHINE	SECTION	23
MODEL 181 SWINGLOADER	BOOM	

ASSEMBLY NUMBER	DESCRIPTION
1801246	BUCKET CYLINDER LINES AND FITTINGS

ITEM NO.	PART NUMBER	DESCRIPTION	QTY USED
2	1800209	COUNTERBALANCE VALVE	1
3	1800819	1" O-RING FOR SPLIT FLANGE HEAD	3
4	1800465	H.H.C.S. 3/8-16 X 4 1/2" LONG	2
5	1800454	H.H.C.S. 3/8-16 X 1 1/4" LONG	6
6	1800568	3/8" LOCK WASHER	10
7	1800824	1" SPLIT FLANGE CLAMP HALF	4
8	1801320	HOSE ASSEMBLY 2781-16 BUCKET RETRACT	1
9	1801321	HOSE ASSEMBLY 2781-16 BUCKET EXTEND	1
10	1800226	HOSE CLAMP	2
11	1801035	45 DEG MALE ELBOW 1 TUBE TO 3/4 O-RING	2
12	1801816	HOSE ASSEMBLY - 2781-16	1
13	1801815	HOSE ASSEMBLY - 2781-16	1
14	1800770	STRAIGHT MALE 3/4 O-RING TO 3/4 TUBE	2
15	1800794	90 DEG MALE ELBOW 3/8 O-RING TO 3/8 TUBE	1
16	1801324	HOSE ASSEMBLY 1503-6 PILOT LINE	1
17	1800762	STRAIGHT MALE 3/8 O-RING TO 3/8 TUBE	1
18	1800970	3/8" O-RING BOSS PLUG-HEX HEAD	1
19	1800464	H.H.C.S. 3/8-16 X 4" LONG	2



① INSTALLATION

4	8-9-91
REV.NO.	DATE

<p>TOLERANCES UNLESS OTHERWISE SPECIFIED FRACTIONS +/- 3 PLACE DECIMALS +/- 2 PLACE DECIMALS +/- 1 PLACE DECIMALS +/- ANGLES</p> <p>SEE SWINGMASTER SPECIFICATION 0-1 FOR TOLERANCES NOT SPECIFIED</p> <p>DIMENSIONS ARE IN INCHES DO NOT SCALE DRAWING SCALE: 1/4"=1"</p>	<p>SWINGMASTER CORPORATION 11415 MELROSE AVENUE FRANKLIN PARK, ILLINOIS 60131</p>	
	<p>BOOM LIFT CYLINDER</p>	
<p>LINES AND FITTINGS</p>		
<p>DRAWN BY: J.R.</p>	<p>DRAWING NO.</p>	
<p>DATE: 11-19-88</p>	<p>D-74</p>	

SWINGMASTER CORPORATION

PARTS BOOK

MACHINE	SECTION	23
MODEL 181 SWINGLOADER	BOOM	

ASSEMBLY NUMBER	DESCRIPTION	QTY USED	
1801247	BOOM LIFT CYLINDER LINES & FITTINGS		
ITEM NO.	PART NUMBER	DESCRIPTION	QTY USED
2	1800210	COUNTERBALANCE VALVE	2
3	1800152	TUBE WELDMENT - ROD END - LEFT SIDE	1
4	1800154	TUBE WELDMENT - ROD END - RIGHT SIDE	1
5	1800817	3/4" O-RING FOR SPLIT FLANGE HEAD	10
6	1801667	12 POINT F.H.C.S. 3/8-16 X 1 3/4" LONG	16
7	1801668	3/8" MALE QUICK DISCONNECT	2
8	1800568	3/8" LOCK WASHER	28
9	1801325	HOSE ASSEMBLY 2781-12 BOOM LOWER	2
10	1801326	HOSE ASSEMBLY 2781-12 BOOM LIFT	2
11	1800823	3/4" SPLIT FLANGE CLAMP HALF	8
12	1800454	H.H.C.S. 3/8-16 X 1 1/4" LONG	12
13	1800463	H.H.C.S. 3/8-16 X 3 1/2" LONG	4
14	1800464	H.H.C.S. 3/8-16 X 4" LONG	4
15	1800794	90 DEG MALE ELBOW 3/8 O-RING TO 3/8 TUBE	4
16	1802251	HOSE ASSEMBLY 1503-6	2
17	1800970	3/8" O-RING BOSS PLUG-HEX HEAD	2
18	1800850	45 DEG MALE ELBOW 3/4 TUBE TO 3/4 PIPE	4
19	1800297	STEEL COUPLING - 3/4" x 2-1/8" LG.	4
20	1800877	3/4" PIPE NIPPLE X 4 3/4 LONG	1
21	1800878	3/4" PIPE NIPPLE X 6 1/4 LONG	1
22	1800879	3/4" PIPE NIPPLE X 13 LONG	1
23	1800880	3/4" PIPE NIPPLE X 14 1/2 LONG	1
24	1801424	TEE 3/4-F PIPE 3/4-F PIPE 3/4-M TUBE	2
25	1801328	HOSE ASSEMBLY 2781-12	2
26	1800801	90 DEG MALE ELBOW 3/4 O-RING TO 3/4 TUBE	2
27	1801669	HOSE ASSEMBLY 2781-12	1
28	1801670	HOSE ASSEMBLY 2781-12	1
29	1800770	STRAIGHT MALE 3/4 O-RING TO 3/4 TUBE	2
30	1800134	LIFT CYLINDER CASE SIDE PORT TUBE	1
31	1800136	LIFT CYLINDER CASE SIDE PORT TUBE	1

SWINGMASTER CORPORATION

PARTS BOOK

MACHINE	SECTION	23
MODEL 181 SWINGLOADER	BOOM	

ASSEMBLY NUMBER	DESCRIPTION
1801247	BOOM LIFT CYLINDER LINES & FITTINGS

ITEM NO.	PART NUMBER	DESCRIPTION	QTY USED
32	1801113	6 3/4" TUBE CLAMP	8
33	1800457	H.H.C.S. 3/8-16 X 1 1/2" LONG	8
34	1800514	HEX NUT 3/8-16	8
35	1801814	3/8 MALE TEE - O-RING-TUBE-TUBE	2