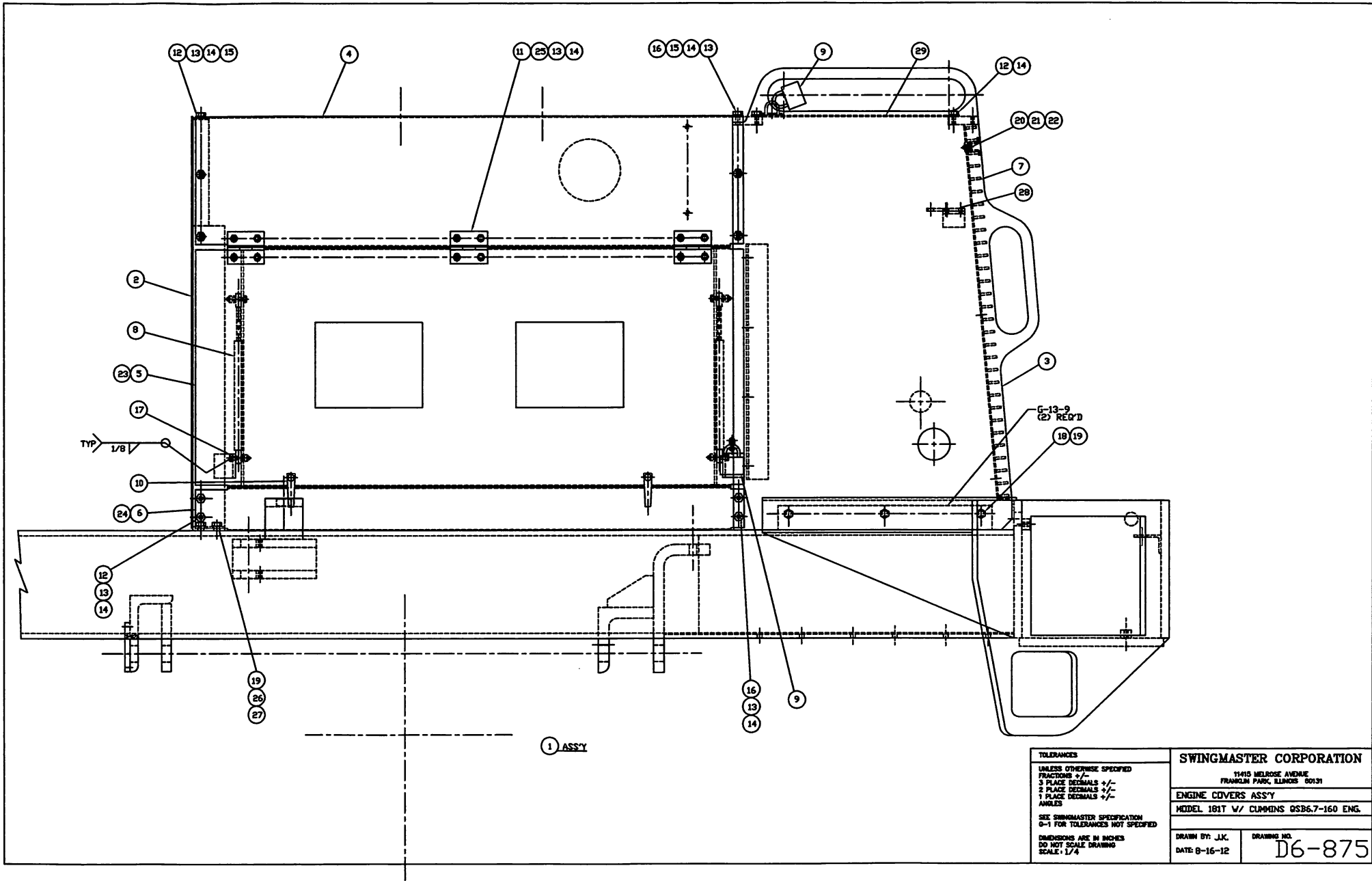




COVERS (ENGINE, BATTERY, FLOOR)



**TOLERANCES**  
 UNLESS OTHERWISE SPECIFIED  
 FRACTIONS +/-  
 3 PLACE DECIMALS +/-  
 2 PLACE DECIMALS +/-  
 1 PLACE DECIMALS +/-  
 ANGLES

SEE SWINGMASTER SPECIFICATION  
 0-1 FOR TOLERANCES NOT SPECIFIED

DIMENSIONS ARE IN INCHES  
 DO NOT SCALE DRAWING  
 SCALE: 1/4

<b>SWINGMASTER CORPORATION</b>	
11410 MELROSE AVENUE FRANKLIN PARK, ILLINOIS 60131	
<b>ENGINE COVERS ASS'Y</b>	
MODEL 181T V/ CUMMINS QSB6.7-160 ENG.	
DRAWN BY: JJK.	DRAWING NO.
DATE: 8-16-12	D6-875

SWINGMASTER CORPORATION

PARTS BOOK

---

MACHINE SECTION 14

---

MODEL 181 SWINGLOADER COVERS AND GRILL

---

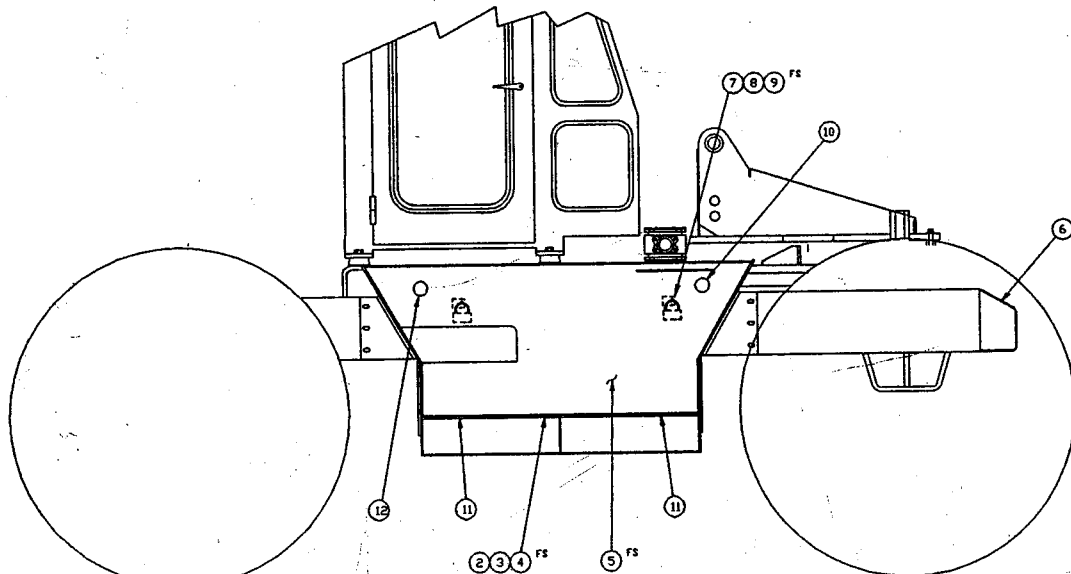
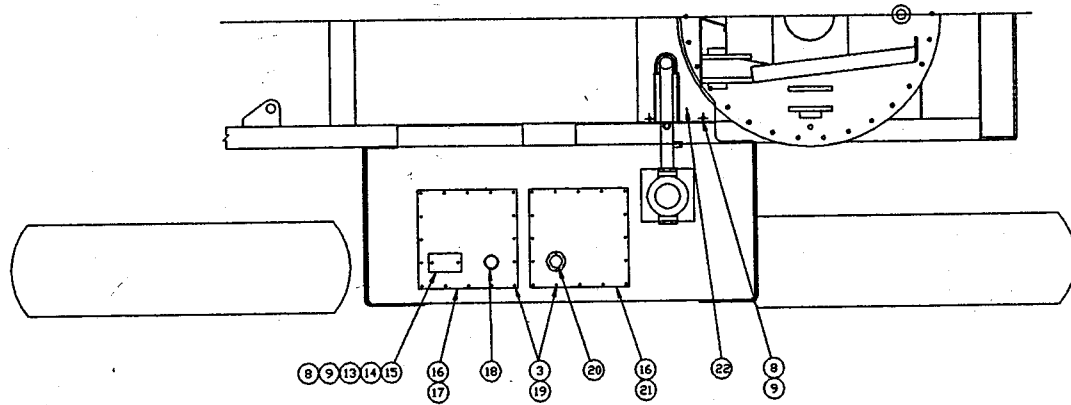


---

ASSEMBLY NUMBER	DESCRIPTION
1807011	ENGINE COVER ASS'Y

---

ITEM NO.	PART NUMBER	DESCRIPTION	QTY USED
2	1805541	HOOD SUPPORT WELDMENT	1
3	1807016	GRILL WLDM'T	1
4	1807017	HOOD	1
5	1807018	ENGINE SIDE COVER - L.H.	1
6	1807019	BOTTOM SIDE COVER - L.H.	1
7	1800674	34.63 X 38 STEEL GRATING	1
8	1805546	GAS SPRING	4
9	1800175	PADLOCK AND KEY	3
10	1800196	LATCH	4
11	1800310	HINGE 3" x 3.5" LG.	6
12	1800443	H.H.C.S. 5/16-18 X 1" LONG	20
13	1800512	HEX NUT 5/16-18	46
14	1800074	5/16" LOCK WASHER	55
15	1800550	5/16" FLAT WASHER	14
16	1800445	H.H.C.S. 5/16-18 X 1 1/2" LONG	11
17	1800513	ESNA HEX NUT 5/16-18	8
18	1800472	H.H.C.S. 1/2-13 X 1 3/4" LONG	6
19	1800570	1/2" LOCK WASHER	6
20	1800439	H.H.C.S. 1/4-20 X 1 1/2" LONG	6
21	1800673	1/4-20 CLIP NUT	6
22	1800186	STEEL ANCHOR CLIPS	6
23	1807020	ENGINE SIDE COVER - R.H.	1
24	1807021	BOTTOM SIDE COVER - R.H.	1
25	1800442	H.H.C.S. 5/16-18 X 3/4" LONG	24
26	1801417	H.H.C.S. 1/2-13 X 1 1/4" LONG	4
27	1800554	1/2" FLAT WASHER	4
28	1806278	LIGHTS MTG. BAR	1
29	1807022	RADIATOR COVER	1



1 INSTALLATION

<p><b>TOLERANCES</b>                  UNLESS OTHERWISE SPECIFIED                  FRACTIONS +/-                  3 PLACE DECIMALS +/-                  2 PLACE DECIMALS +/-                  1 PLACE DECIMALS +/-                  ANGLES</p>	<p><b>SWINGMASTER CORPORATION</b>                  11415 MELROSE AVENUE                  FRANKLIN PARK, ILLINOIS 60131</p>	
	<p>COVERS INSTALLATION</p>	
<p>SEE SWINGMASTER SPECIFICATION                  G-1 FOR TOLERANCES NOT SPECIFIED</p>	<p>MODEL 181</p>	<p>DRAWING NO.</p>
<p>DIMENSIONS ARE IN INCHES                  DO NOT SCALE DRAWING                  SCALE 1</p>	<p>DRAWN BY: J.K.C.                  DATE: 2-27-97</p>	<p>D4-80</p>

SWINGMASTER CORPORATION

PARTS BOOK

MACHINE	SECTION	14
MODEL 181 SWINGLOADER	COVERS AND GRILL	

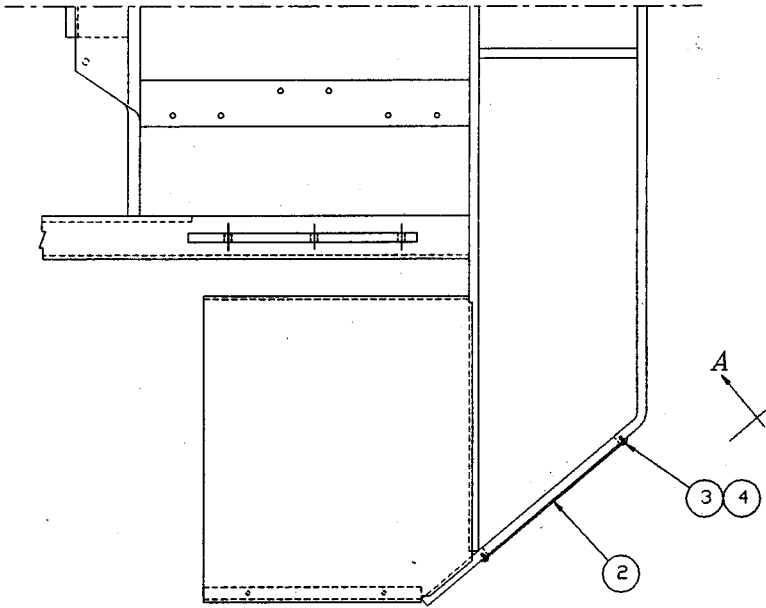
ASSEMBLY  
NUMBER

DESCRIPTION

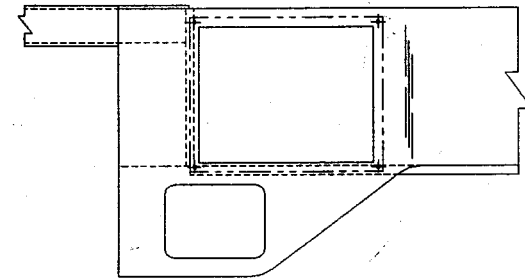
1805602

COVER INSTALLATION

ITEM NO.	PART NUMBER	DESCRIPTION	QTY. USED
002	1800847	S.H.F.H.M.S. 5/16-18 X 1	5.00
003	1800074	5/16" LOCK WASHER	38.00
004	1800512	HEX NUT 5/16-18	10.00
005	1801295	FENDER DOOR ASSEMBLY	1.00
006	1800273	TOOL BOX COVER ASSEMBLY	1.00
007	1800175	PADLOCK AND KEY	3.00
008	1800451	H.H.C.S. 3/8-16 X 3/4" LONG	8.00
009	1800568	3/8" LOCK WASHER	8.00
010	1800270	SIGHT GAUGE - 1 1/2" NPT	1.00
011	1802671	3/4" PIPE PLUG - HEX HEAD	2.00
012	1800658	1 1/2" PIPE PLUG-SOCKET HEAD	1.00
013	1800276	FUEL LEVEL SENDER	1.00
014	1800899	5 1/4 X 3 X 1/4 PLATE W/TWO 7/16 HOLES	1.00
015	1800287	GASKET (FOR FUEL SENDER)	1.00
016	1800895	COVER PLATE GASKET	2.00
017	1800897	FUEL TANK COVER PLATE WELDMENT	1.00
018	1800274	FUEL CAP	1.00
019	1800442	H.H.C.S. 5/16-18 X 3/4" LONG	33.00
020	1800263	HYDRAULIC TANK CAP WITH LOCKING TAB	1.00
021	1800896	HYDRAULIC TANK COVER PLATE	1.00
022	1805604	COVER PLATE	1.00



1 INSTALLATION



VIEW "A-A"  
(CUT-OUT BOTH SIDES)

<p><b>TOLERANCES:</b></p> <p>UNLESS OTHERWISE SPECIFIED          FRACTIONS +/-          3 PLACE DECIMALS +/-          2 PLACE DECIMALS +/-          1 PLACE DECIMALS +/-          ANGLES</p> <p>SEE SWINGMASTER SPECIFICATION          G-1 FOR TOLERANCES NOT SPECIFIED</p> <p>DIMENSIONS ARE IN INCHES          DO NOT SCALE DRAWING          SCALE: 1=8</p>	<p><b>SWINGMASTER CORPORATION</b></p> <p>11415 MELROSE AVENUE          FRANKLIN PARK, ILLINOIS 60131</p> <p>BATTERY REMOVAL CUTOUTS &amp; COVER INSTALLATION</p> <hr/> <p>DRAWN BY: J.K.      DRAWING: C-99</p> <p>DATE: 2-5-88</p>
---	---

SWINGMASTER CORPORATION

PARTS BOOK

MACHINE

SECTION

14

MODEL 181 SWINGLOADER

COVERS AND GRILL

ASSEMBLY  
NUMBER

DESCRIPTION

1801572

BATTERY CUTOUT &amp; COVERS INSTALLATION

ITEM  
NO.PART  
NUMBER

DESCRIPTION

QTY.  
USED

2	1801573	COVER	2.00
3	1800430	H.H.C.S. 1/4-20 X 1/2" LONG	8.00
4	1800567	1/4" LOCK WASHER	8.00