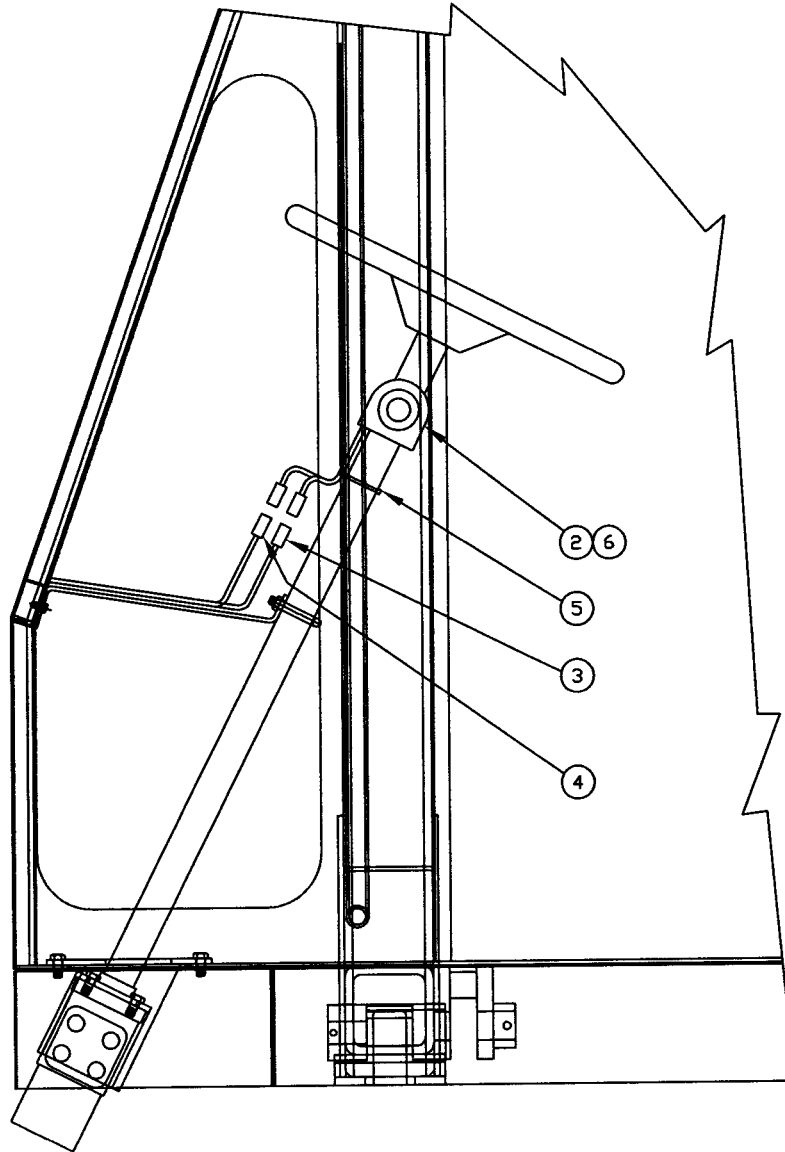




DRIVE SYSTEM CONTROLS



① INSTALLATION

<p>TOLERANCES</p> <p>UNLESS OTHERWISE SPECIFIED</p> <p>FRACTIONS +/- +/-</p> <p>3 PLACE DECIMALS +/-</p> <p>2 PLACE DECIMALS +/-</p> <p>1 PLACE DECIMALS +/-</p> <p>ANGLES</p> <p>SEE SWINGMASTER SPECIFICATION G-1 FOR TOLERANCES NOT SPECIFIED</p> <p>DIMENSIONS ARE IN INCHES</p> <p>DO NOT SCALE DRAWING</p> <p>SCALE 1=6</p>		<p>SWINGMASTER CORPORATION</p> <p>11415 MELROSE AVENUE FRANKLIN PARK, ILLINOIS 60131</p> <p>TRANSMISSION SHIFTER INSTALLATION</p> <p>MODEL 181</p> <p>DRAWN BY: J.K. DRAWING NO.</p> <p>DATE: 5-25-00 H-321</p>	
--	--	--	--

SWINGMASTER CORPORATION

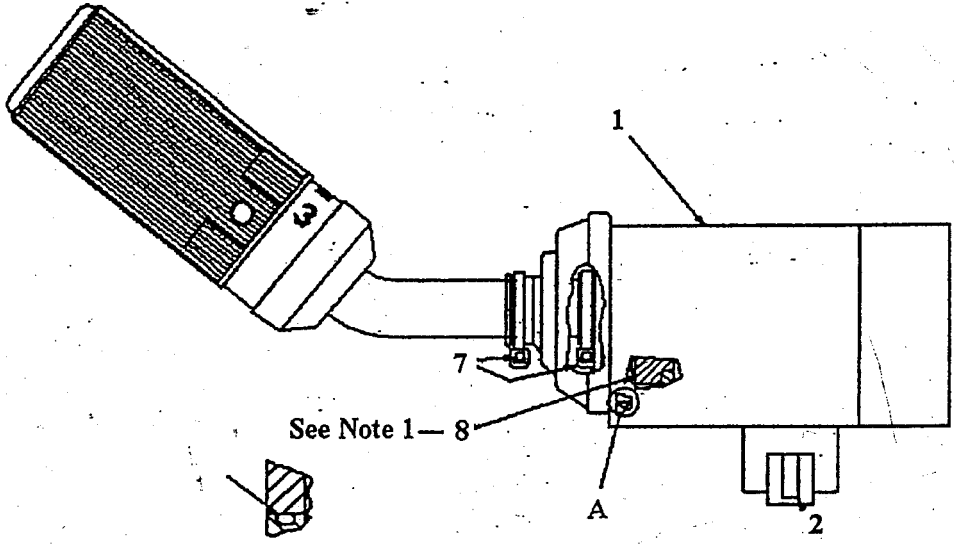
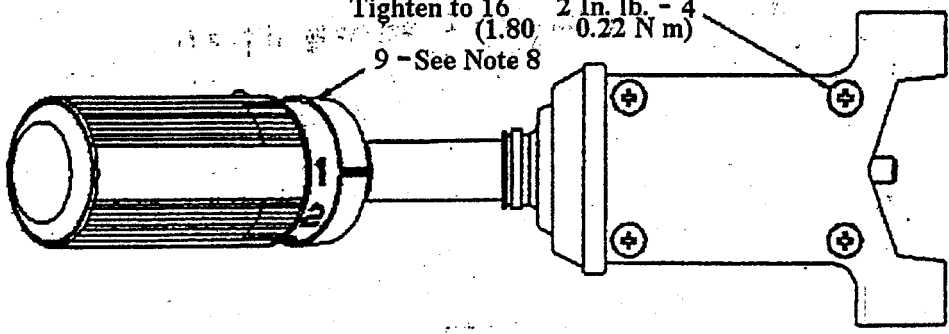
MACHINE	SECTION
MODEL 181 SWINGLOADER	3 DRIVE SYSTEM CONTROLS

ASSEMBLY NUMBER	DESCRIPTION
1806199	TRANSMISSION SHIFTER INSTALLATION

ITEM NO.	PART NUMBER	DESCRIPTION	QTY USED
002	1802217	TRANSMISSION SHIFTER	1
003	1802218	1/4" SNAP-ON TERMINAL - MALE	4
004	1802223	1/4" SNAP-ON TERMINAL - FEMALE	3
005	1801074	1/16-2 TY-RAP CABLE TIE	4
006	1803538	TRANSMISSION SHIFTER MOUNTING HARDWARE	1

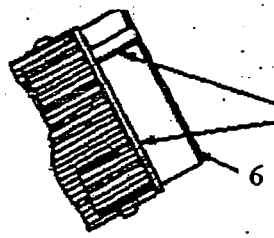
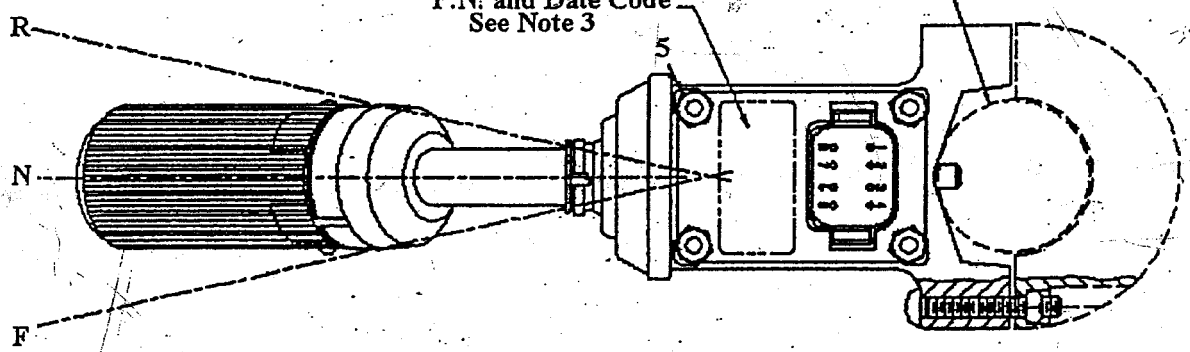
Tighten to 16 2 In. lb. - 4
(1.80 0.22 N m)

9 - See Note 8



Clamp Assy Part No.
LL-835-21 (Optional)

P.N. and Date Code
See Note 3

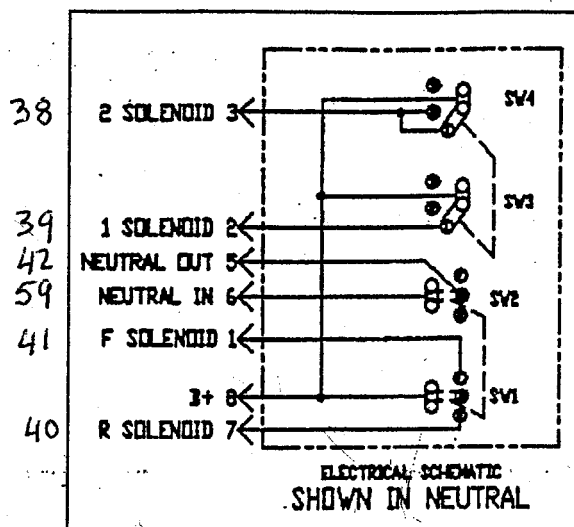


Position Decal Against These
Edges When Installing

Shifter Assembly, LL-835-13

Notes:

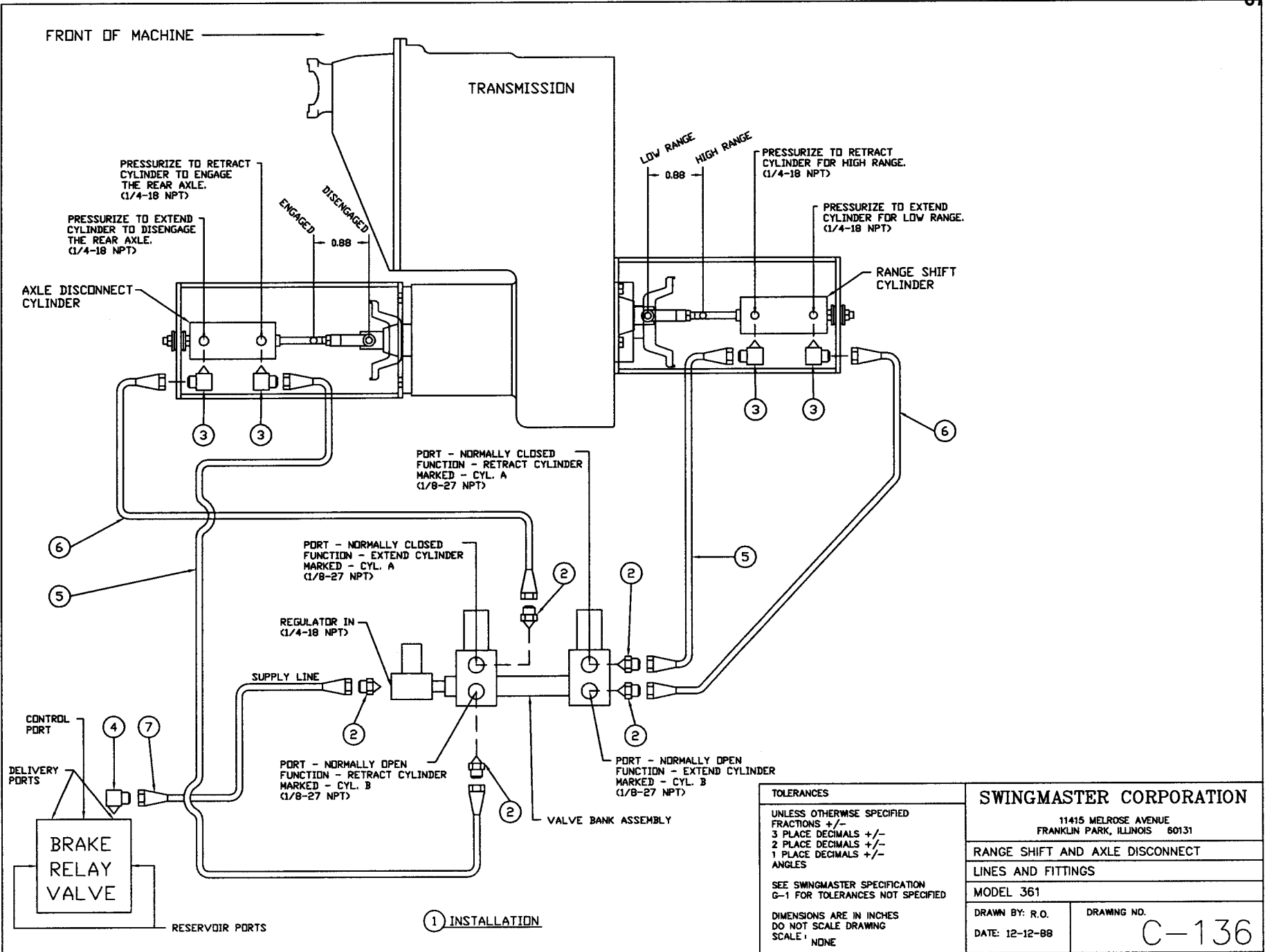
1. Apply item 8 to Item 2 prior to assembly.
2. 100% check for proper operation.
3. Hobbs P/N and date code to be stamped in area shown. Letters .2± .03 high.
4. Torque requirement to change speeds to be 8.88± 2.6 In. Lb. (1.0± 0.3 N m)
5. Torque requirement to change directions to be 22.7 In. Lbs (2.5± 0.8 N m)
6. Torque requirement to disengage neutral detent 15.45 In. Lbs. (1.7± 0.5 N m)
7. Critical Characteristic. No Spc data required.
8. Rotate Knob to 1st speed. Center white line of collar on No. 1. Tighten set screw to 3.5± 0.5 In. Lbs. (0.40± 0.06 N m)
9. A. Mating connector -LL-6800-4
B. Connector Terminal -LL-6800-2
 Optional Terminal -LL-6800-1
C. Connector wedge-LL-6800-5
D. Sealing plug -LL-6800-3



Legend

- F Forward Position
- N Neutral Position
- R Reverse Position
- 1 First Gear Position
- 2 Second Gear Position
- 3 Third Gear Position
- Sw1 Direction Selector Switch
- Sw2 Neutral Switch
- Sw3 Speed Selector Switch
- Sw4 Speed Selector Switch

Item	Part Number	Description	Req'd
1	LL-835-23	Housing, handle & C.B. Assy	1
2	LL-835-18	Cover	1
3	LL-835-19	O-ring	1
4	LL-835-22	Screw, 8-32 x 1.75	4
5	LL-835-20	Nut, 8-32	4
6	LL-835-17	Decal, Indicator	1
7	LL-835-15	Locking cable tie	2
8	LL-835-14	Lubricant	A/R
9	LL-835-16	Set screw (M4 x 0.7)	1



TOLERANCES
UNLESS OTHERWISE SPECIFIED
FRACTIONS +/-
3 PLACE DECIMALS +/-
2 PLACE DECIMALS +/-
1 PLACE DECIMALS +/-
ANGLES
SEE SWINGMASTER SPECIFICATION
G-1 FOR TOLERANCES NOT SPECIFIED
DIMENSIONS ARE IN INCHES
DO NOT SCALE DRAWING
SCALE: NONE

SWINGMASTER CORPORATION	
11415 MELROSE AVENUE FRANKLIN PARK, ILLINOIS 60131	
RANGE SHIFT AND AXLE DISCONNECT	
LINES AND FITTINGS	
MODEL 361	
DRAWN BY: R.O.	DRAWING NO.
DATE: 12-12-88	C-136

SWINGMASTER CORPORATION

PARTS BOOK

MACHINE

SECTION

3

MODEL 181 SWINGLOADER

DRIVE SYSTEM CONTROLS

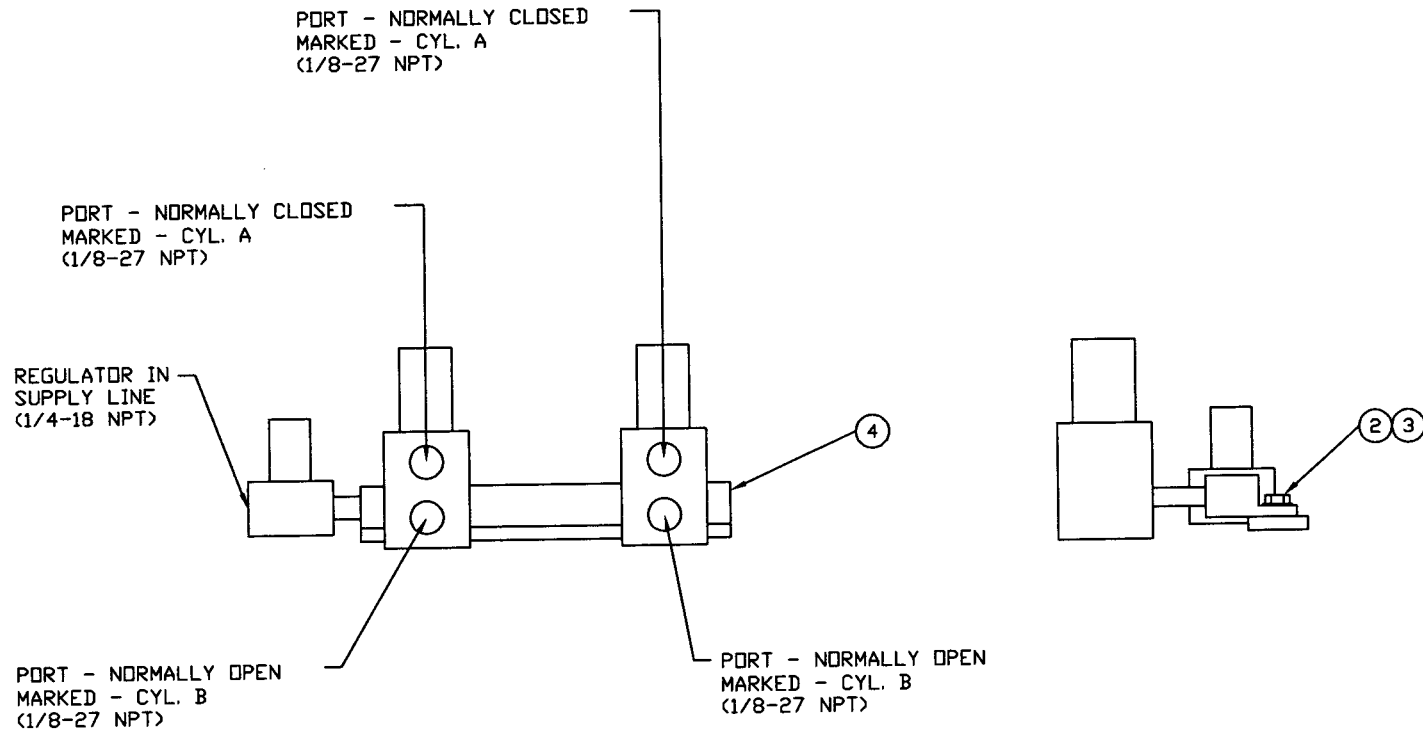
ASSEMBLY
NUMBER

DESCRIPTION

1805778

RANGE SHIFT AND AXLE DISCONNECT L & F

ITEM NO.	PART NUMBER	DESCRIPTION	QTY USED
002	1800750	STRAIGHT MALE 1/8 PIPE TO 1/4 TUBE	5
003	1800777	90 DEG MALE ELBOW 1/4 PIPE TO 1/4 TUBE	4
004	1802477	HOSE ASSEMBLY 1503-4	2
005	1802478	HOSE ASSEMBLY 1503-4	2
007	1805779	HOSE ASSEMBLY 1503-4	1



① INSTALLATION

<p>TOLERANCES</p> <p>UNLESS OTHERWISE SPECIFIED FRACTIONS +/- 3 PLACE DECIMALS +/- 2 PLACE DECIMALS +/- 1 PLACE DECIMALS +/- ANGLES</p> <p>SEE SWINGMASTER SPECIFICATION G-1 FOR TOLERANCES NOT SPECIFIED</p> <p>DIMENSIONS ARE IN INCHES DO NOT SCALE DRAWING SCALE: NONE</p>		<p>SWINGMASTER CORPORATION</p> <p>11415 MELROSE AVENUE FRANKLIN PARK, ILLINOIS 60131</p>	
		<p>VALVE BANK ASSEMBLY INSTALLATION</p>	
		<p>MODEL 361 & SL180</p>	
		<p>DRAWN BY: J.K.</p> <p>DATE: 1-23-89</p>	<p>DRAWING NO.</p> <p>H-182</p>

SWINGMASTER CORPORATION

PARTS BOOK

MACHINE

SECTION

3

MODEL 181 SWINGLOADER

DRIVE SYSTEM CONTROLS

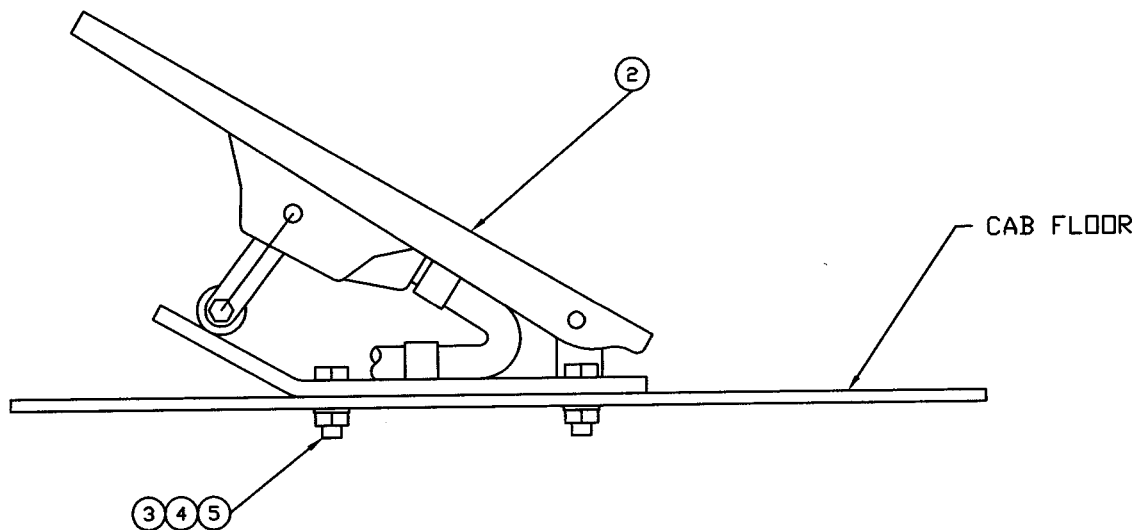
ASSEMBLY
NUMBER

DESCRIPTION

1802471

VALVE BANK ASSEMBLY INSTALLATION

ITEM NO.	PART NUMBER	DESCRIPTION	QTY USED
002	1801430	H.H.C.S. 5/16-18 X 5/8" LONG	2
003	1800074	5/16" LOCK WASHER	2
004	1802472	VALVE BANK ASSEMBLY	1



① INSTALLATION

TOLERANCES

UNLESS OTHERWISE SPECIFIED

FRACTIONS +/-

3 PLACE DECIMALS +/-

2 PLACE DECIMALS +/-

1 PLACE DECIMALS +/-

ANGLES

SEE SWINGMASTER SPECIFICATION
G-1 FOR TOLERANCES NOT SPECIFIED

DIMENSIONS ARE IN INCHES
DO NOT SCALE DRAWING
SCALE: 1=2

SWINGMASTER

11415 MELROSE AVENUE
FRANKLIN PARK, ILLINOIS 60131
(847) 451-1224

ELECTRONIC ACCELERATOR FOOT PEDAL INSTALLATION

WITH CUMMINS QSB 4.5 & 6.7 DIESEL ENG.

DRAWN BY: J.K.

DRAWING NO.

DATE: 3-14-07

H3-171

SWINGMASTER CORPORATION

PARTS BOOK

MECHINE

SECTION

3

MODEL 181 SWINGLOADER

DRIVE SYSTEM CONTROLS

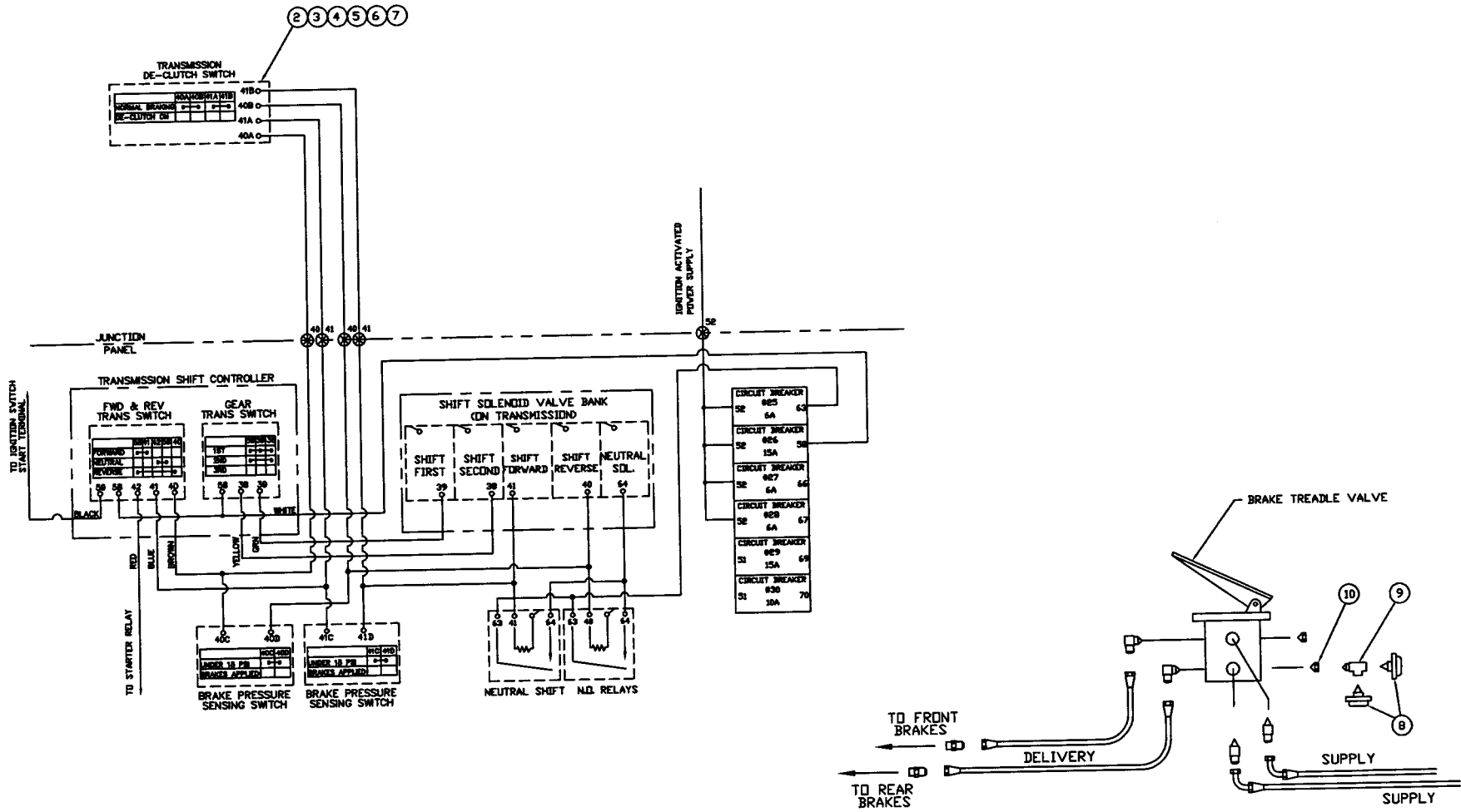
ASSEMBLY
NUMBER

DESCRIPTION

1806702

ELECTRONIC ACCEL. FOOT PEDAL INST'L

ITEM NO.	PART NUMBER	DESCRIPTION	QTY USED
2	1806703	ELECTRONIC ACCEL. FOOT PEDAL	1
3	1800061	H.H.C.S. 5/16-18 X 7/8" LONG	3
4	1800512	HEX NUT 5/16-18	3
5	1800074	5/16" LOCK WASHER	3



1 INSTALLATION

TOLERANCES
 UNLESS OTHERWISE SPECIFIED
 FRACTIONS +/-
 3 PLACE DECIMALS +/-
 2 PLACE DECIMALS +/-
 1 PLACE DECIMALS +/-
 ANGLES

SEE SWINGMASTER SPECIFICATION
 G-1 FOR TOLERANCES NOT SPECIFIED

DIMENSIONS ARE IN INCHES
 DO NOT SCALE DRAWING
 SCALE:

SWINGMASTER CORPORATION
 11415 MELROSE AVENUE
 FRANKLIN PARK, ILLINOIS 60131

TRANSMISSION DE-CLUTCH INSTALLATION

MODEL 182

DRAWN BY: B.W. DRAWING NO.
 DATE: 5-2-90 C1-164

SWINGMASTER CORPORATION

PARTS BOOK

MACHINE

SECTION

3

MODEL 181 SWINGLOADER

DRIVE SYSTEM CONTROLS

ASSEMBLY
NUMBER

DESCRIPTION

1803597 TRANSMISSION DECLUTCH INSTALLATION

ITEM NO.	PART NUMBER	DESCRIPTION	QTY USED
2	1802280	SWITCH - ON - ON (DOUBLE POLE)	1
3	1802848	SYMBOL - TRANSMISSION DE-CLUTCH	1
4	1800410	SOCKET HOUSING FOR SWITCH	1
5	1800412	SNAP-ON TERMINAL, FEMALE	6
6	1802849	NAME PLATE - TRANSMISSION DE-CLUTCH	1
7	1800845	1/8" POP RIVET	2
8	1802850	PRESSURE SENSING SWITCH (NORMALLY CLOSED)	2
9	1800911	1/8 PIPE SERVICE TEE M-F-F	1
10	1802851	PIPE REDUCER BUSHING - 3/8 TO 1/8	1
11	1801086	BULK 14 GA. WIRE/ (FT)	0