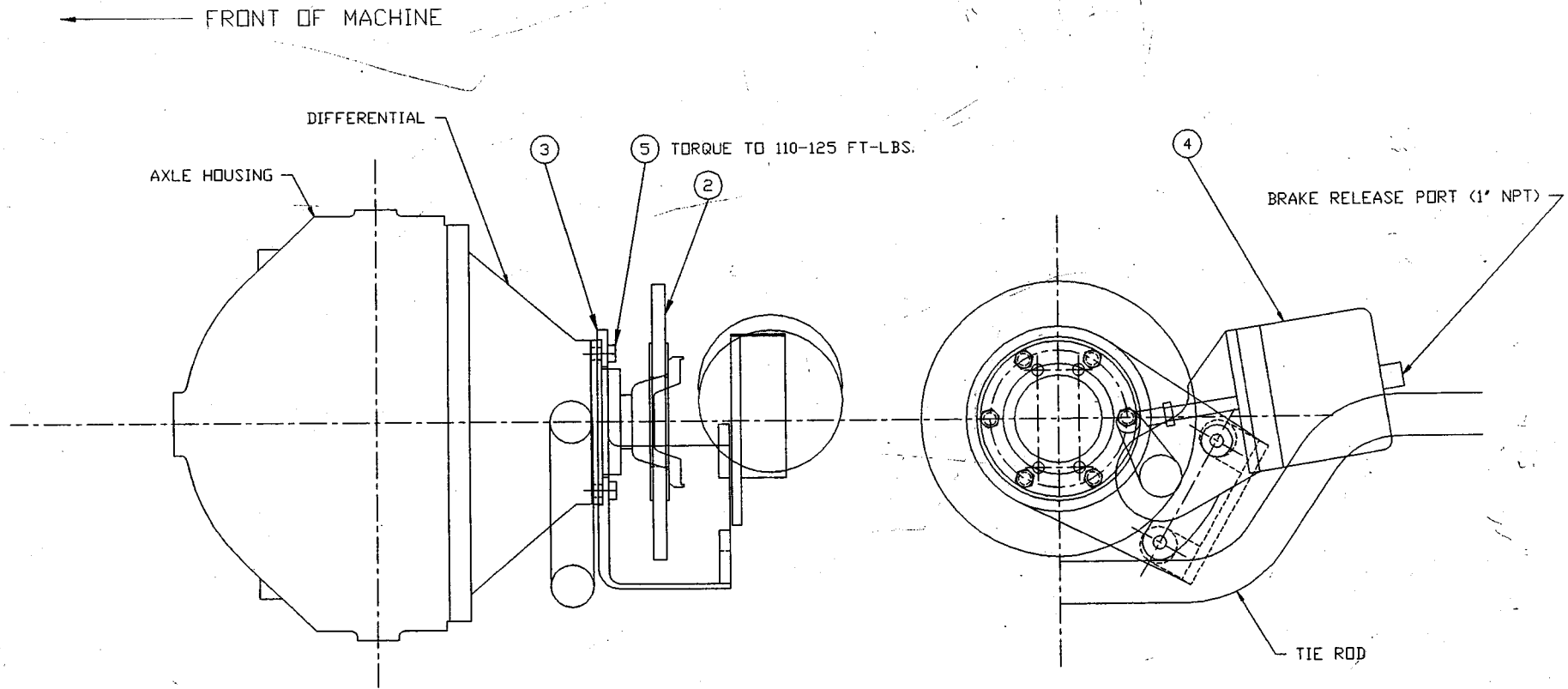




## PARKING BRAKE SYSTEM



1 INSTALLATION

INSTALLATION NOTE:

1. INSTALL AIR LINE AND APPLY A MINIMUM OF 60 PSI AIR PRESSURE.
2. PLACE CALIPER OVER DISC.
3. ACTUATE CALIPER 10 TIMES BY DROPPING AIR PRESSURE.
4. CHECK CLEARANCE BETWEEN BRAKE AND PADS AND DISC. CLEARANCE SHOULD BE 0.015 INCH MINIMUM AND 0.030 MAXIMUM WITH AIR PRESSURE APPLIED.
5. TO ADJUST CLEARANCE, REMOVE PLASTIC CAP FROM CENTER OF ACTUATOR LEVER. INSERT 1/4" HEX WRENCH AND ROTATE SHAFT TO OBTAIN PROPER CLEARANCE. REPLACE PLASTIC CAP.

WARNING:

DO NOT ATTEMPT TO OPEN THE SPRING CHAMBER.  
DANGEROUS SPRING PRELOAD.  
SEVERE INJURY MAY RESULT.

TO SERVICE AIR CHAMBER, SEE GUSTIN BACON BULLETIN.  
HAYES BRAKE RECOMMENDED THAT INEXPERIENCED PERSONNEL  
DO NOT ATTEMPT TO SERVICE THE SPRING CHAMBER.

TOLERANCES

UNLESS OTHERWISE SPECIFIED  
FRACTIONS +/-  
3 PLACE DECIMALS +/-  
2 PLACE DECIMALS +/-  
1 PLACE DECIMALS +/-  
ANGLES

SEE SWINGMASTER SPECIFICATION  
G-1 FOR TOLERANCES NOT SPECIFIED

DIMENSIONS ARE IN INCHES  
DO NOT SCALE DRAWING  
SCALE: 1=4

SWINGMASTER CORPORATION

11415 MELROSE AVENUE  
FRANKLIN PARK, ILLINOIS 60131

PARKING BRAKE ASS'Y INSTALLATION

SPRING APPLIED AIR RELEASED

MODEL 361 & SL180

DRAWN BY: J.K.

DRAWING NO.

DATE: 8-16-88

C-111

SWINGMASTER CORPORATION

PARTS BOOK

MACHINE

SECTION

8

MODEL 181 SWINGLOADER

PARKING BRAKE SYSTEM

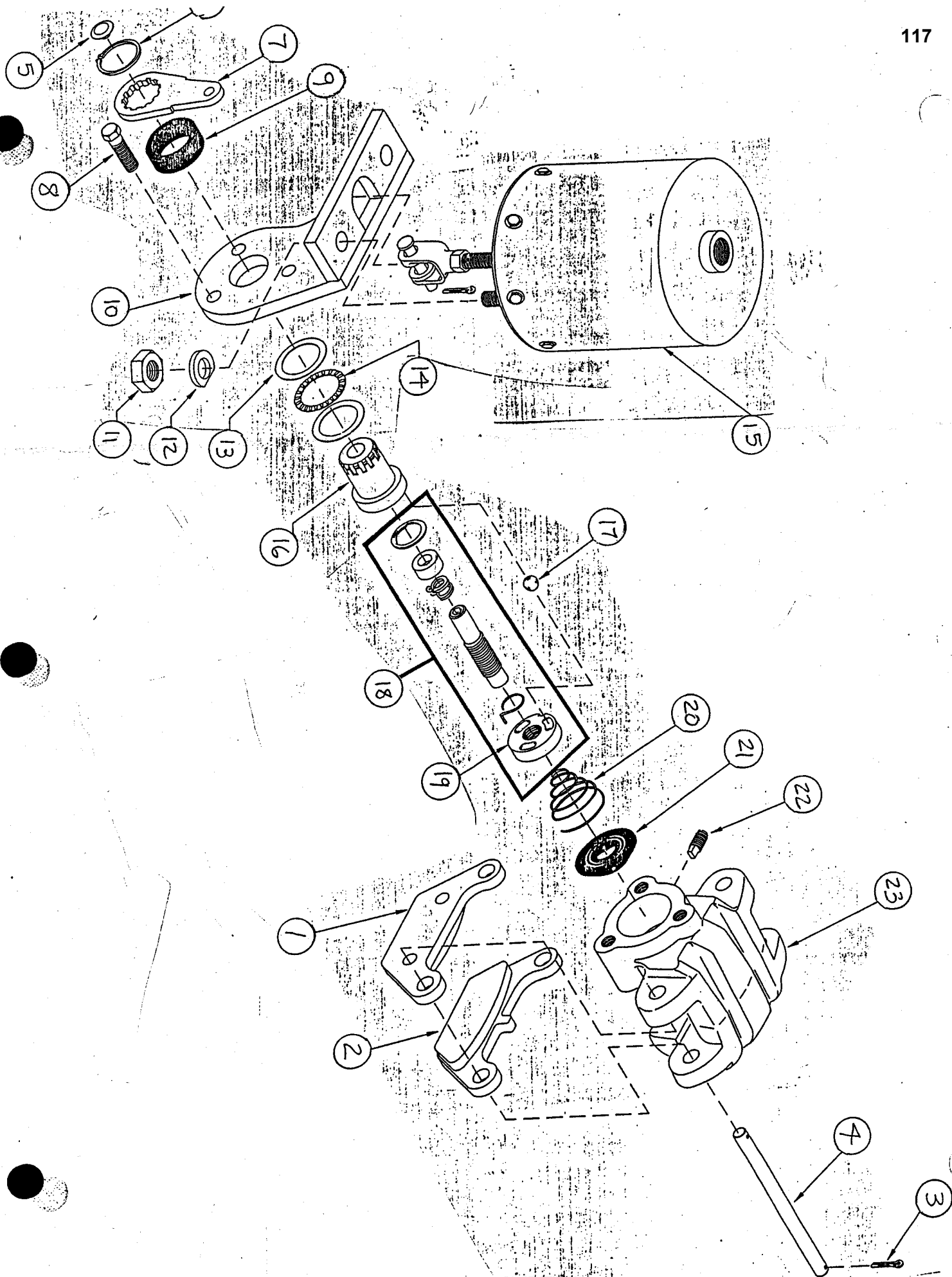
ASSEMBLY  
NUMBER

DESCRIPTION

1802206

PARKING BRAKE ASSEMBLY INSTALLATION

ITEM NO.	PART NUMBER	DESCRIPTION	QTY USED
002	1802207	YOKE & DISC PLATE WELDMENT	1
003	1802208	PARKING BRAKE MOUNTING BRACKET WELDMENT	1
004	1802209	PARKING BRAKE ASSEMBLY	1
005	1802210	H.H.C.S. 9/16-12 X 1 3/4" LONG	6



SWINGMASTER CORPORATION

PARTS BOOK

MACHINE

SECTION

8

MODEL 181 SWINGLOADER

PARKING BRAKE SYSTEM

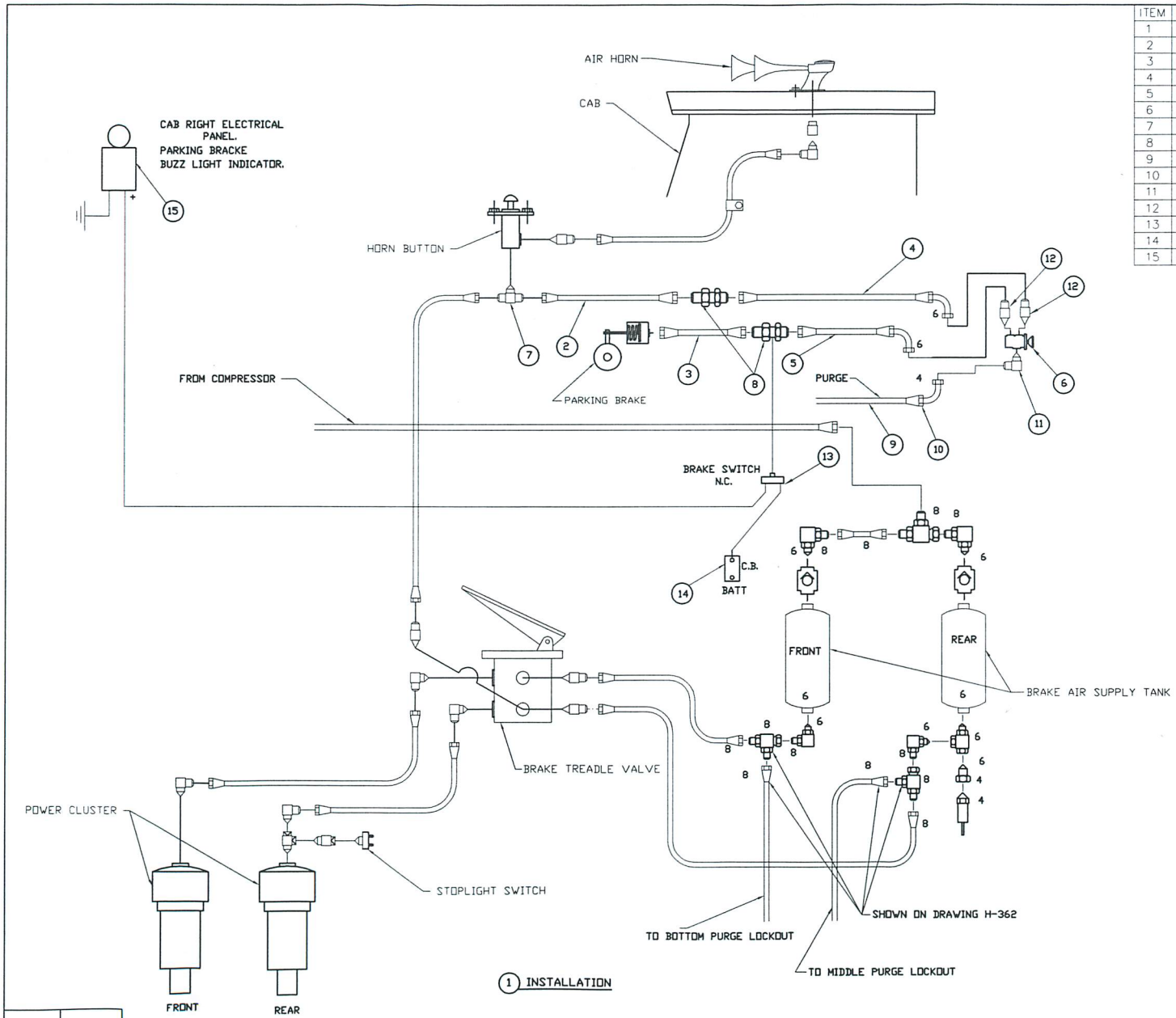
ASSEMBLY  
NUMBER

DESCRIPTION

1802209

PARKING BRAKE ASSEMBLY

ITEM NO.	PART NUMBER	DESCRIPTION	QTY. USED
1	8702657	PAD & HOLDER ASSEMBLY	1
2	8702658	PAD & HOLDER ASSEMBLY	1
3	8702659	COTTER PIN	4
4	8702660	MOUNTING PIN	2
5	8702661	PLUG	1
6	8702662	RETAINING RING	1
7	8702663	LEVER	3
8	8702664	CAP SCREW	1
9	8702665	DUST BOOT	1
10	8702666	MOUNTING BRACKET	2
11	8702667	HEX NUT	2
12	8702668	WASHER	2
13	8702669	THRUST WASHER	1
14	8702670	THRUST BEARING	1
15	8702671	SPRING ACTUATOR	1
16	8702672	ROTOR	3
17	8702673	BALL	1
18	8702674	SHAFT & STATOR ASSEMBLY	1
19		STATOR (NOT SOLD SEPARATELY)	1
20	8702675	SPRING	1
21	8702676	DUST BOOT	1
22	8702677	KEY	1
23	8702678	CASTING	1



ITEM	PART NO.	DESCRIPTION	QTY
1	D2-83	PARKING BRAKE KIT AIR LINES & FITTINGS	1
2	G6-290-6	HOSE ASS'Y FC350-6	1
3	G6-288-13	HOSE ASSEMBLY FC350-6	1
4	G6-290-4	HOSE ASSEMBLY FC350-6	1
5	G6-290-7	HOSE ASSEMBLY FC350-6	1
6	P-227-1	SEALCO PUSH-PULL VALVE	1
7	G-174-6-4S	MALE BRANCH TEE	1
8	G-245-6-6	BULKHEAD UNION -6-6	2
9	G13-120-4	HOSE 2556-4 24" LG.	1
10	G1-221-4S	HOSE FITTING	1
11	G-128-3	FITTING	1
12	G-126-9	FITTING	2
13	P-97-8	BRAKE LIGHT SWITCH	1
14	G-184-2	CIRCUIT BRAKER 15A	1
15	P-60-3	BUZZ-LIGHT	1

1 INSTALLATION

<p><b>TOLERANCES</b></p> <p>UNLESS OTHERWISE SPECIFIED</p> <p>FRACTIONS +/-</p> <p>3 PLACE DECIMALS +/-</p> <p>2 PLACE DECIMALS +/-</p> <p>1 PLACE DECIMALS +/-</p> <p>ANGLES</p> <p>SEE SWINGMASTER SPECIFICATION G-1 FOR TOLERANCES NOT SPECIFIED</p> <p>DIMENSIONS ARE IN INCHES</p> <p>DO NOT SCALE DRAWING</p> <p>SCALE:</p>	<p><b>SWINGMASTER CORPORATION</b></p> <p>11415 MELROSE AVENUE FRANKLIN PARK, ILL. 60131</p>	
	<p><b>PARKING BRAKE KIT</b></p>	
	<p><b>AIR LINES &amp; FITTINGS</b></p>	
	<p><b>FOR MODEL 181 BNRR</b></p>	
<p>DRAWN BY: YHY</p> <p>DATE: 10-17-16</p>	<p>DRAWING NO.</p> <p style="font-size: 2em; font-weight: bold;">D3-83</p>	

REV.NO.	DATE

SWINGMASTER CORPORATION

PARTS BOOK

MACHINE

SECTION

8

MODEL 181 SWINGLOADER

PARKING BRAKE SYSTEM

ASSEMBLY  
NUMBER

DESCRIPTION

1805808 PARKING BRAKE LINES AND FITTINGS

ITEM NO.	PART NUMBER	DESCRIPTION	QTY USED
002	1801213	HOSE ASSEMBLY FC350 - 6	1
003	1805809	HOSE ASSEMBLY FC350-6	1
004	1805810	HOSE ASSEMBLY FC350-6	1
005	1805811	HOSE ASSEMBLY FC350-6	1
006	1805114	SEALCO AIR PRKG BRAKE CNTRL VALVE	1
007	1800917	MALE TEE 3/8 TUBE-3/8 TUBE-1/4 PIPE	1
008	1801033	3/8 TUBE STRAIGHT BULKHEAD UNION	4
009	1802726	FC-350-4 BULK HOSE/(IN)	1
010	1800977	90 DEG SHORT ELBOW 1/4 UNI F-1503-4	1
011	1805787	TUBE ASSEMBLY	1
012	1804103	TUBE UNION - 3/8	1
013	1805812	HOSE ASSEMBLY FC350-6	1
014	1805813	HOSE ASSEMBLY FC350-6	1