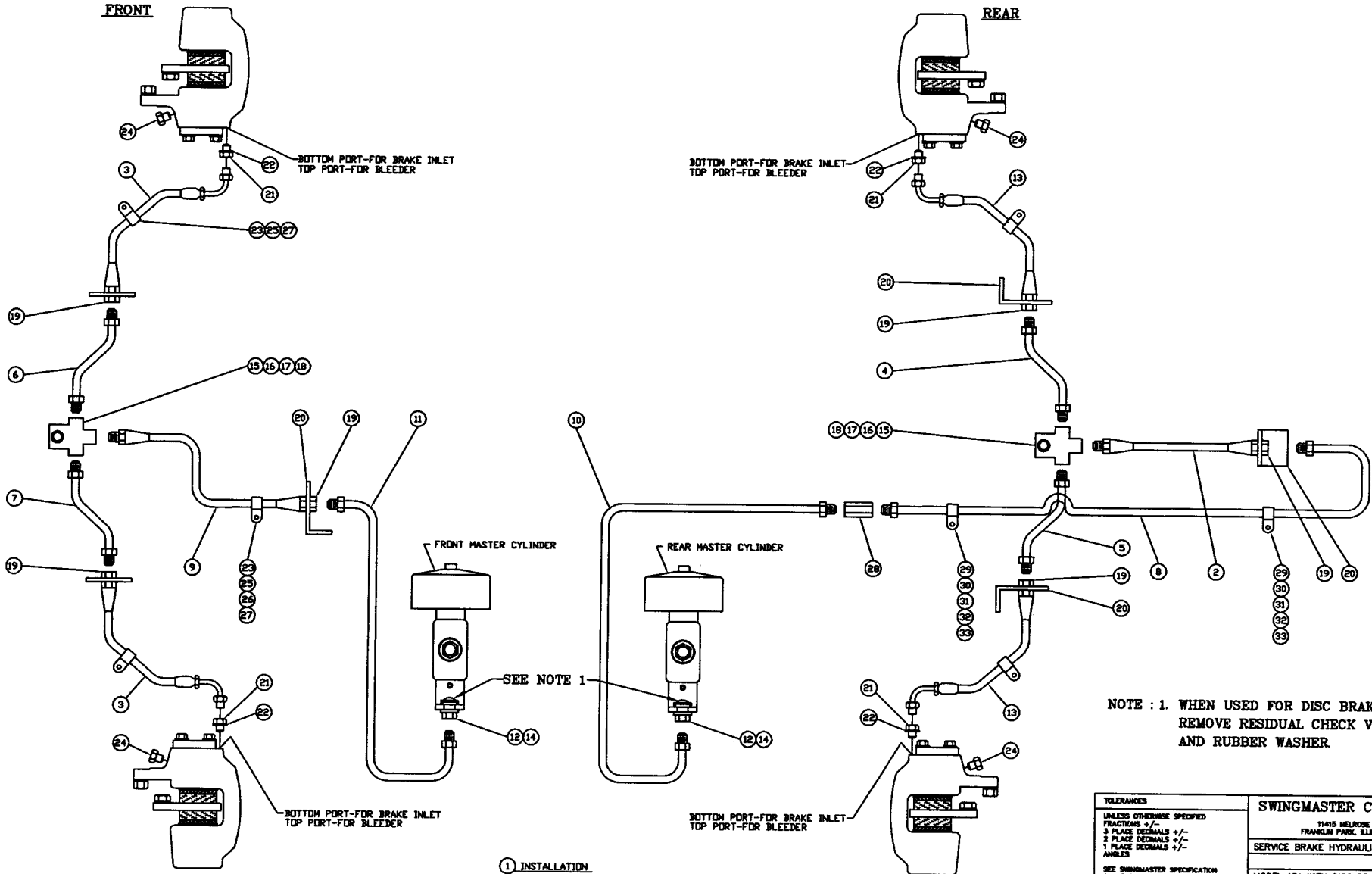




SERVICE BRAKE SYSTEM



SWINGMASTER CORPORATION

PARTS BOOK

MACHINE	SECTION	7
MODEL 181 SWINGLOADER	SERVICE BRAKE SYSTEM	

ASSEMBLY NUMBER	DESCRIPTION
1805579	SERVICE BRAKE HYDRAULIC LINES & FITTING

ITEM NO.	PART NUMBER	DESCRIPTION	QTY USED
002	1801219	HOSE ASSEMBLY 1503 - 4	1
003	1805580	HOSE ASSEMBLY 1503-4	2
004	1801221	TUBE ASSEMBLY	1
005	1801222	TUBE ASSEMBLY	1
006	1801223	TUBE ASSEMBLY	1
007	1801224	TUBE ASSEMBLY	1
008	1801225	TUBE ASSEMBLY	1
009	1805581	HOSE ASSEMBLY 1503-4	1
010	1803137	TUBE ASSEMBLY	1
011	1803138	TUBE ASSEMBLY	1
012	1800924	MASTER CYL CON 1/2-20 M TO 7/16-24 F	2
013	1805582	HOSE ASSEMBLY 1503-4	2
014	1800922	COPPER GASKET 1/2 DIAMETER	2
015	1800927	7/16-20 (HOSE) TO TWO 7/16-24 F	2
016	1800445	H.H.C.S. 5/16-18 X 1 1/2" LONG	2
017	1800512	HEX NUT 5/16-18	2
018	1800074	5/16" LOCK WASHER	2
019	1800532	HEX JAM NUT 5/8-18	6
020	1800169	ANGLE	4
021	1805583	INLET CONNECTOR	4
022	1804582	7/16" COPPER WASHER	4
023	1800739	1/2" DIAMETER CLAMP	5
024	1805584	INVERTED FLARE PLUG 1/2-20	4
025	1800452	H.H.C.S. 3/8-16 X 1" LONG	5
026	1800514	HEX NUT 3/8-16	1
027	1800568	3/8" LOCK WASHER	5
028	1801092	1/4" TUBE UNION	1
029	1800747	1/4" DIAMETER CLAMP	2
030	1800430	H.H.C.S. 1/4-20 X 1/2" LONG	2
031	1800510	HEX NUT 1/4-20	2

SWINGMASTER CORPORATION

PARTS BOOK

MACHINE

SECTION

7

MODEL 181 SWINGLOADER

SERVICE BRAKE SYSTEM

ASSEMBLY
NUMBER

DESCRIPTION

1805579

SERVICE BRAKE HYDRAULIC LINES & FITTING

ITEM
NO.PART
NUMBER

DESCRIPTION

QTY
USED

032

1800548

1/4" FLAT WASHER

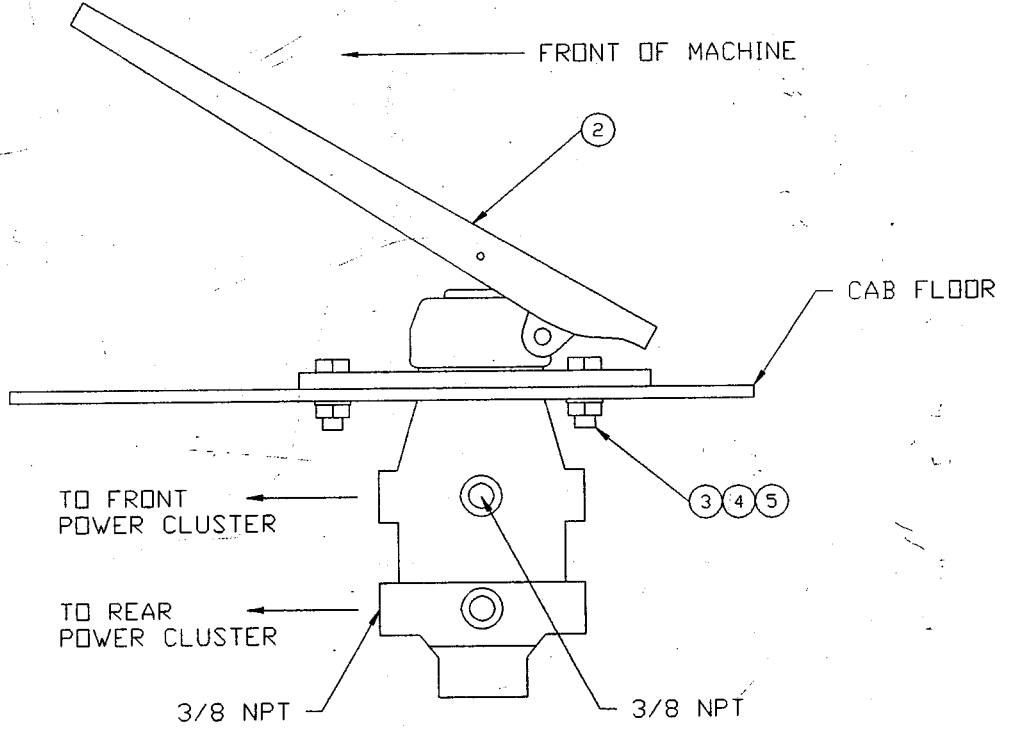
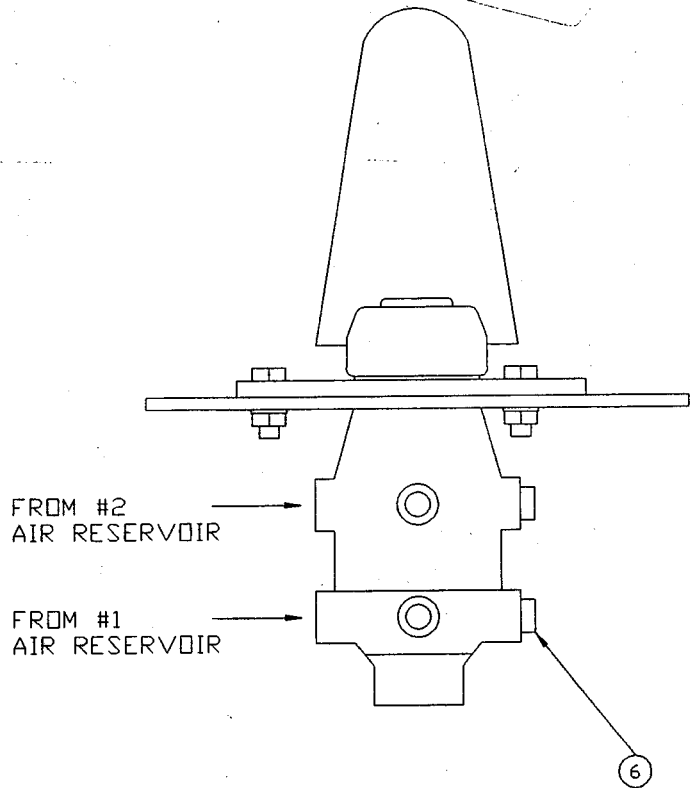
2

033

1800567

1/4" LOCK WASHER

2



① INSTALLATION

REVISION
1

TOLERANCES
UNLESS OTHERWISE SPECIFIED
FRACTIONS +/-
3 PLACE DECIMALS +/-
2 PLACE DECIMALS +/-
1 PLACE DECIMALS +/-
ANGLES
SEE SWINGMASTER SPECIFICATION
G-1 FOR TOLERANCES NOT SPECIFIED
DIMENSIONS ARE IN INCHES
DO NOT SCALE DRAWING
SCALE: NONE

SWINGMASTER CORPORATION	
11415 MELROSE AVENUE FRANKLIN PARK, ILLINOIS 60131	
BRAKE TREADLE VALVE INSTALLATION	
DRAWN BY: R.O.	DRAWING NO.
DATE: 11-18-88	H-45

SWINGMASTER CORPORATION

PARTS BOOK

MACHINE

SECTION

7

MODEL 181 SWINGLOADER

SERVICE BRAKE SYSTEM

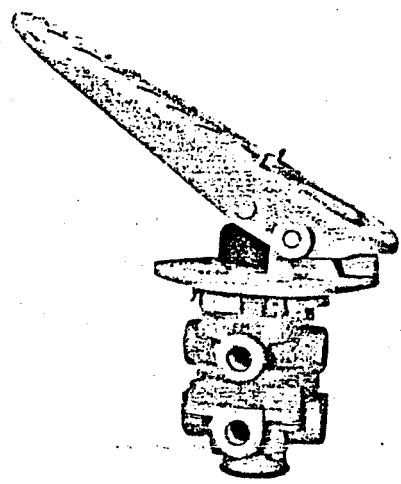
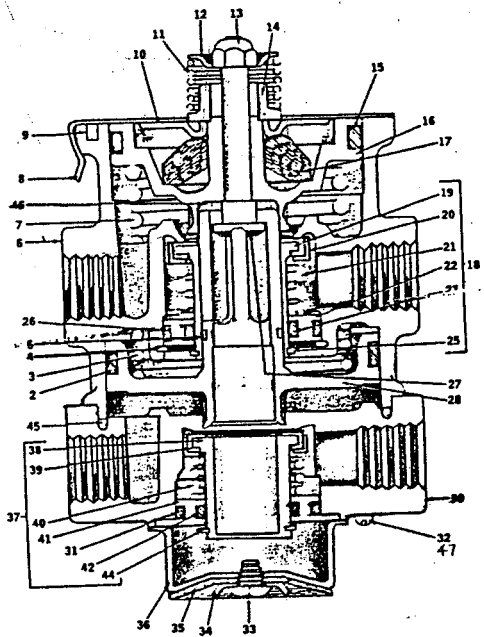
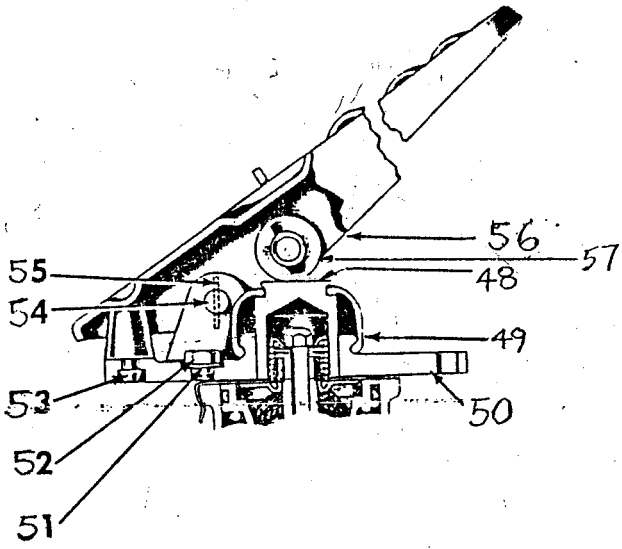
ASSEMBLY
NUMBER

DESCRIPTION

1801209

BRAKE TREADLE VALVE INSTALLATION

ITEM NO.	PART NUMBER	DESCRIPTION	QTY. USED
2	1800135	BRAKE VALVE	1.00
3	1800443	H.H.C.S. 5/16-18 X 1" LONG	3.00
4	1800512	HEX NUT 5/16-18	3.00
5	1800074	5/16" LOCK WASHER	3.00
6	1800655	3/8" PIPE PLUG-SOCKET HEAD	4.00



① ASSEMBLY

SWINGMASTER CORPORATION

PARTS BOOK

MACHINE

SECTION

7

MODEL 181 SWINGLOADER

SERVICE BRAKE SYSTEM

ASSEMBLY
NUMBER

DESCRIPTION

1800135

BRAKE VALVE ASSEMBLY

ITEM NO.	PART NUMBER	DESCRIPTION	QTY. USED
2		O-RING	1
3		RELAY PISTON SPRING	1
4		RETAINING RING	1
5		O-RING	1
6		BODY- NOT SERVICEABLE	1
7		PISTON RETURN SPRING	1
8		RETAINER	1
9		VENT FILTER	1
10		SPRING SEAT	1
11		STEM SPRING	1
12		SPRING GUIDE	1
13		NUT	1
14		SPRING SEAT NUT	1
15		O-RING	1
16		PRIMARY PISTON	1
17		RUBBER SPRING	1
18		INLET & EXHAUST VALVE ASSEMBLY	1
19		INLET & EXHAUST VLAVE	1
20		VALVE RETAINER	1
21		SPRING	1
22		O-RING RETAINER	1
23		O-RING	1
25		RETAINING RING	1
26		O-RING	1
27		STEM	1
28		RELAY PISTON	1
30		BODY- NOT SERVICEABLE	1
31		O-RING	1

SWINGMASTER CORPORATION

PARTS BOOK

MACHINE

SECTION

7

MODEL 181 SWINGLOADER

SERVICE BRAKE SYSTEM

ASSEMBLY
NUMBER

DESCRIPTION

1800135

BRAKE VALVE ASSEMBLY

ITEM NO.	PART NUMBER	DESCRIPTION	QTY. USED
32	8700632	MACHINE SCREW	4
33		SCREW	1
34		DIAPHRAGM WASHER	1
35		DIAPHRAGM	1
36		EXHAUST COVER	1
37		INLET & EXHAUST VALVE ASSEMBLY	1
38		INLET & EXHAUST VALVE	1
39		VALVE RETAINER	1
40		SPRING	1
41		O-RING RETAINER	1
42		O-RING	1
44		RETAINING RING	1
45		O-RING	1
46		RUBBER WASHER	1
47		LOCKWASHER	4
	8700633	MINOR MAINTENANCE KIT INCLUDES ITEMS 2,3,5,7,9,11,13,15,17, 18-23,25,26,31,33-35,37-42,44-46	1
	8700634	MAJOR MAINTENANCE KIT INLCUDES ITEMS 4,8,10,12,14,16,27,28,36	1

SWINGMASTER CORPORATION

PARTS BOOK

MACHINE

SECTION

7

MODEL 181 SWINGLOADER

SERVICE BRAKE SYSTEM

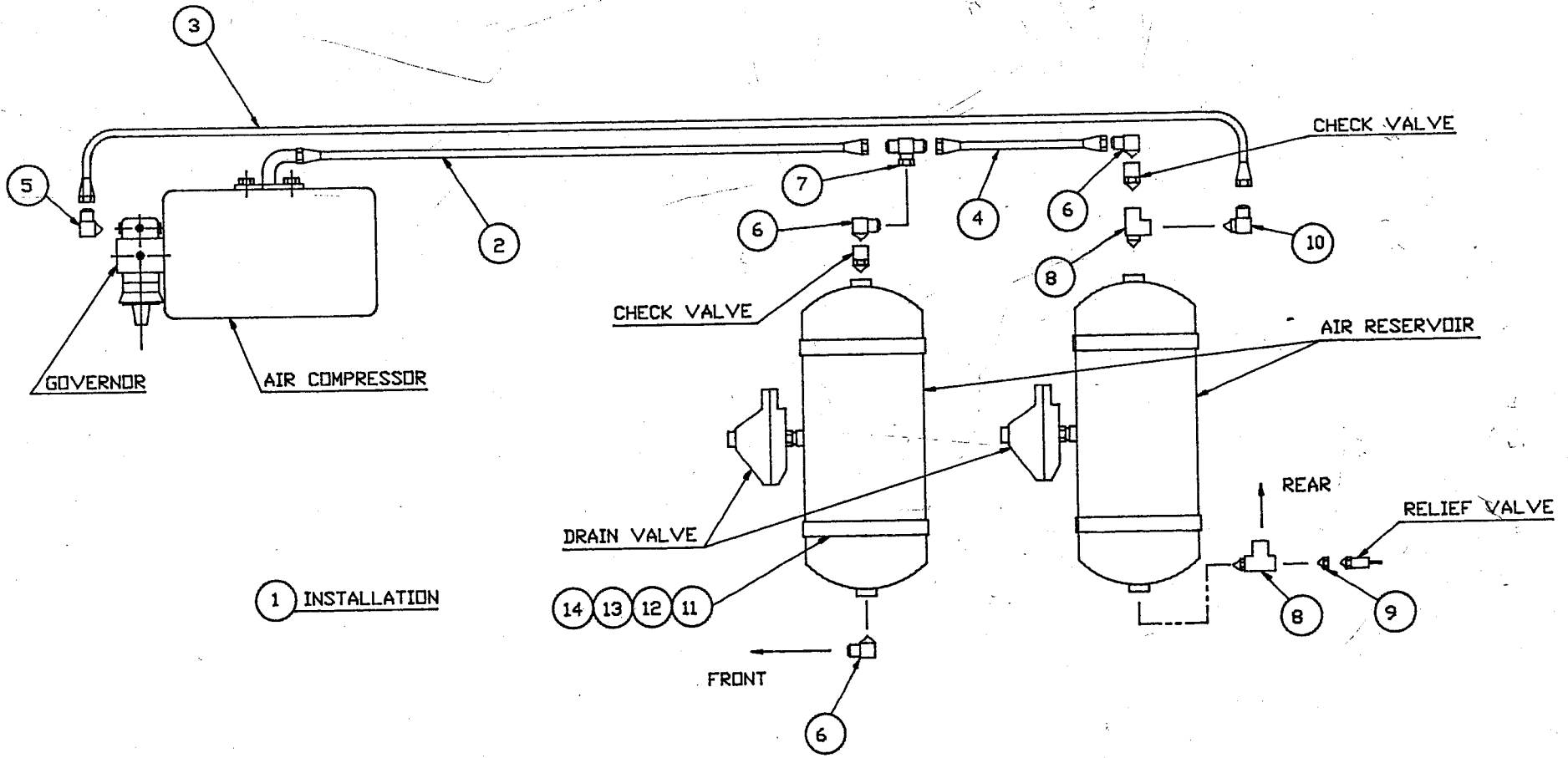
ASSEMBLY
NUMBER

DESCRIPTION

1800135

BRAKE VALVE ASSEMBLY

ITEM NO.	PART NUMBER	DESCRIPTION	QTY. USED
48	8700635	PLUNGER	1
49	8700636	BOOT	1
50	8700637	MOUNTING PLATE	1
51	8700638	LOCKWASHER	3
52	8700639	CAP SCREW	3
53	8700640	STOP BUTTON	1
54	8700641	FULCRUM PIN	1
55	8700642	COTTER PIN	1
56	8700643	TREADLE	1
57	8700644	ROLLER	1
	8700645	STEEL TREADLE ASSEMBLY INCLUDES ITEMS 56,57	1



1 INSTALLATION

2
REVISION

TOLERANCES UNLESS OTHERWISE SPECIFIED FRACTIONS +/- 3 PLACE DECIMALS +/- 2 PLACE DECIMALS +/- 1 PLACE DECIMALS +/- ANGLES SEE SWINGMASTER SPECIFICATION G-1 FOR TOLERANCES NOT SPECIFIED DIMENSIONS ARE IN INCHES DO NOT SCALE DRAWING SCALE:	SWINGMASTER CORPORATION	
	11415 MELROSE AVENUE FRANKLIN PARK, ILLINOIS 80131	
	COMP. AIR SUPPLY LINES & FITTINGS	
	FOR MODEL 181	
DRAWN BY: J.K.	DRAWING NO.	
DATE: 10-5-87	C-39	

SWINGMASTER CORPORATION

PARTS BOOK

MACHINE

SECTION

7

MODEL 181 SWINGLOADER

SERVICE BRAKE SYSTEM

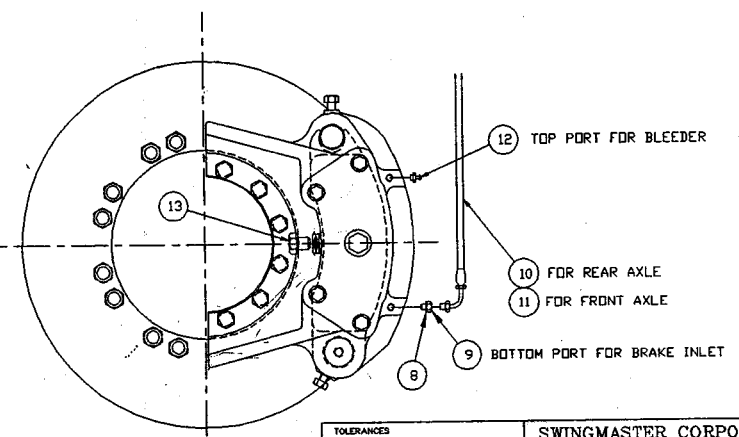
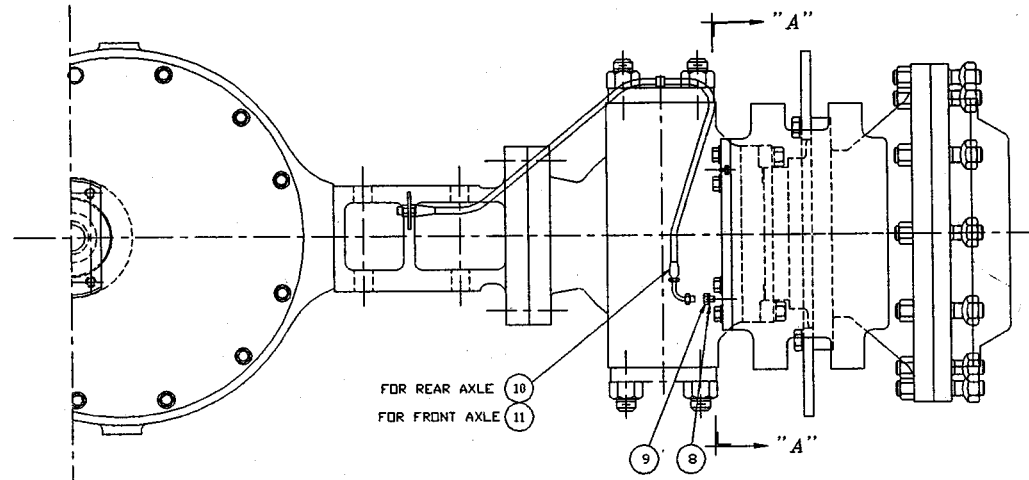
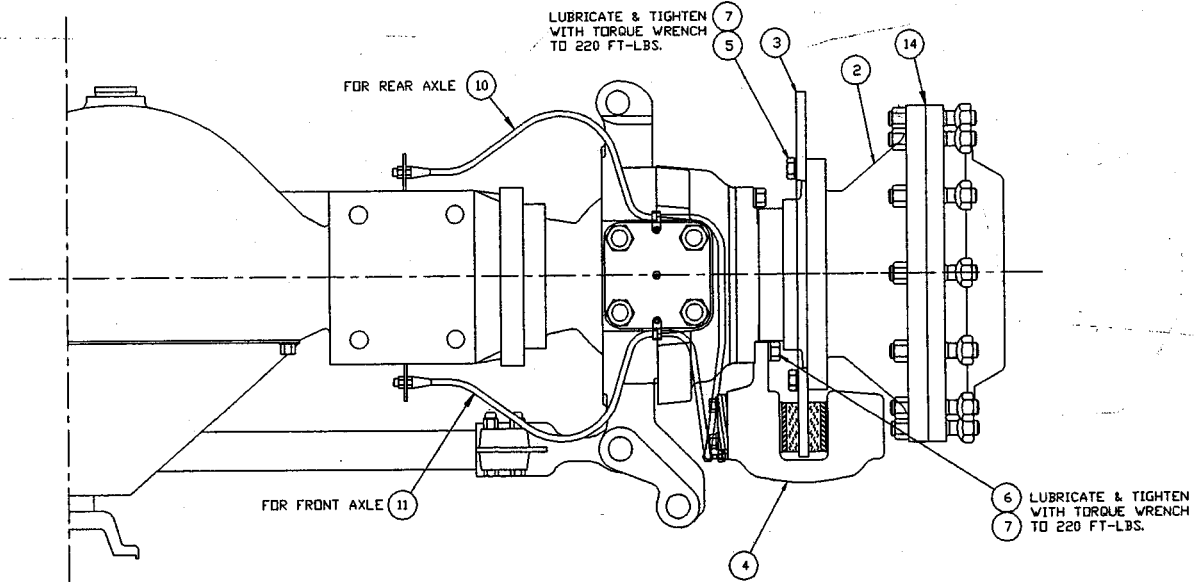
ASSEMBLY
NUMBER

DESCRIPTION

1801207

COMPRESSOR AIR SUPPLY LINES & FITTINGS

ITEM NO.	PART NUMBER	DESCRIPTION	QTY. USED
2	1801229	HOSE ASSEMBLY FC186-8	1.00
3	1801230	HOSE ASSEMBLY FC350 - 6	1.00
4	1801231	HOSE ASSEMBLY FC350 - 8	1.00
5	1800776	90 DEG MALE ELBOW 1/8 PIPE TO 3/8 TUBE	1.00
6	1800782	90 DEG MALE ELBOW 3/8 PIPE TO 1/2 TUBE	3.00
7	1800883	1/2 TUBE BRANCH TEE M-M-F-SWIVEL	1.00
8	1800913	3/8 PIPE SERVICE TEE M-F-F	2.00
9	1800904	STRAIGHT PIPE REDUCER BUSHING 3/8 TO 1/4	1.00
10	1800781	90 DEG MALE ELBOW 3/8 PIPE TO 3/8 TUBE	1.00
11	1800919	RESERVOIR MOUNTING BRACKET	4.00
12	1800454	H.H.C.S. 3/8-16 X 1 1/4" LONG	8.00
13	1800514	HEX NUT 3/8-16	8.00
14	1800568	3/8" LOCK WASHER	8.00



1 CONVERSION KIT

VIEW "A-A"

TOLERANCES UNLESS OTHERWISE SPECIFIED FRACTIONS \pm / - 3 PLACE DECIMALS \pm / - 2 PLACE DECIMALS \pm / - 1 PLACE DECIMALS \pm / - ANGLES	SWINGMASTER CORPORATION 11415 MELROSE AVENUE FRANKLIN PARK, ILLINOIS 60131	
	DISC BRAKE CONVERSION KIT FOR MODEL 181	
SEE SWINGMASTER SPECIFICATION 0-1 FOR TOLERANCES NOT SPECIFIED DIMENSIONS ARE IN INCHES DO NOT SCALE DRAWING SCALE: NINE	DRAWN BY: J.K. DATE: 6-19-97	DRAWING NO. D-731

SWINGMASTER CORPORATION

PARTS BOOK

MACHINE

SECTION

7

MODEL 181 SWINGLOADER

SERVICE BRAKE SYSTEM

ASSEMBLY
NUMBER

DESCRIPTION

1805697

DISC BRAKE CONVERSION KIT

ITEM NO.	PART NUMBER	DESCRIPTION	QTY. USED
002	1805591	WHEEL HUB	2.00
003	1805636	BRAKE DISC	2.00
004	1805595	DISC BRAKE ASSEMBLY(6)	2.00
005	1805594	HEX HEAD CAP SCREW 5/8-18X1-3/4"LG	32.00
006	1805592	SPINDLE MOUNTING SHOULDER BOLT 5/8-18	12.00
007	1800080	SPECIAL 11/16 FLAT WASHER	44.00
008	1804582	7/16" COPPER WASHER	2.00
009	1805583	INLET CONNECTOR	2.00
010	1805582	HOSE ASSEMBLY 1503-4	2.00
011	1805580	HOSE ASSEMBLY 1503-4	2.00
012	8704017	BLEEDER	2.00
013	1805584	INVERTED FLARE PLUG 1/2-20	2.00
014	1800040	GASKET - ROUND, 12-HOLE	2.00