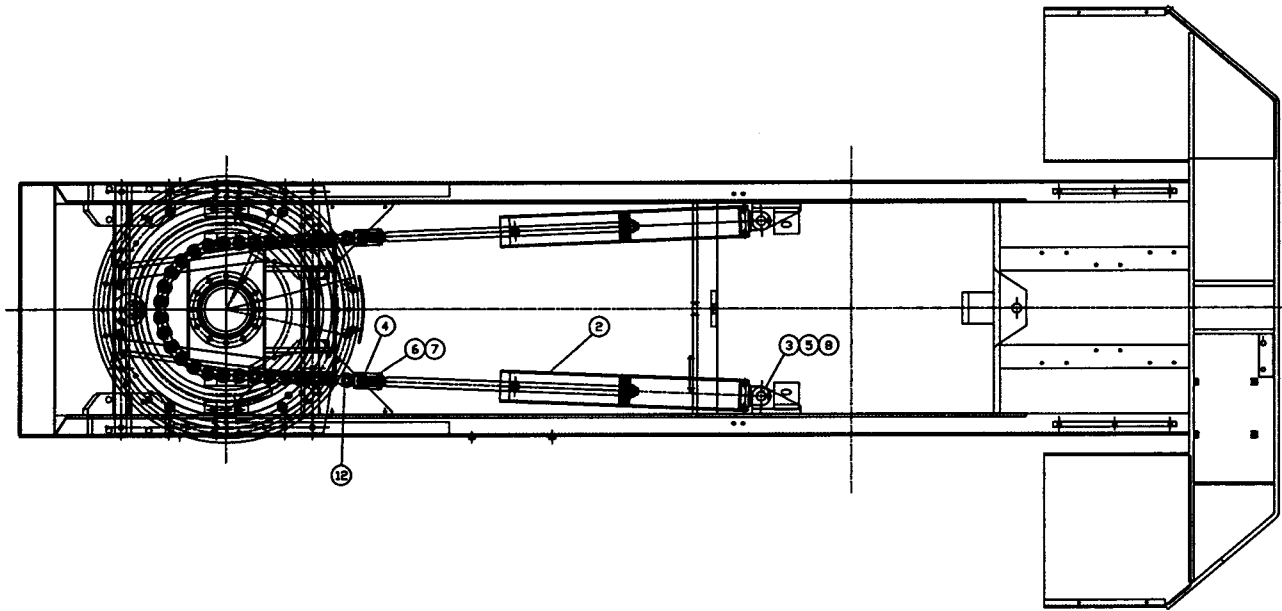
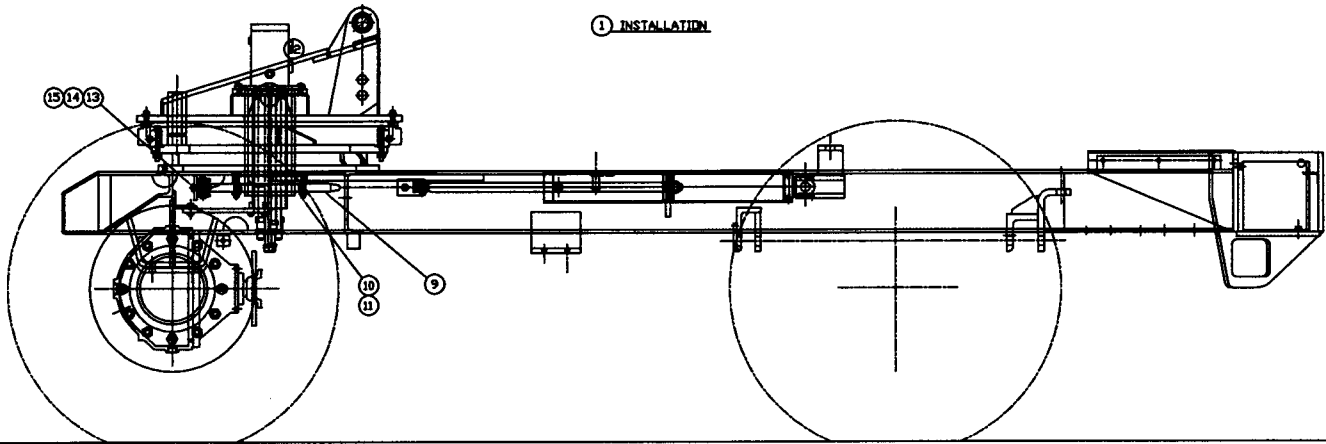




SWING DRIVE SYSTEM



① INSTALLATION



<p>TOLERANCES UNLESS OTHERWISE SPECIFIED FRACTIONS +/- 3 PLACE DECIMALS +/- 2 PLACE DECIMALS +/- 1 PLACE DECIMALS +/- ANGLES</p>		<p>SWINGMASTER CORPORATION 11415 MELROSE AVENUE FRANKLIN PARK, ILLINOIS 60131</p>	
<p>SEE SWINGMASTER SPECIFICATION 0-1 FOR TOLERANCES NOT SPECIFIED</p>		<p>FOR MODEL 1B1</p>	
<p>DIMENSIONS ARE IN INCHES DO NOT SCALE DRAWING SCALE: 1/10</p>		<p>DRAWN BY: J.K. DATE: 4-22-10</p>	<p>DRAWING NO. D-68</p>

SWINGMASTER CORPORATION

PARTS BOOK

MACHINE

SECTION

22

MODEL 181 SWINGLOADER

SWING DRIVE SYSTEM

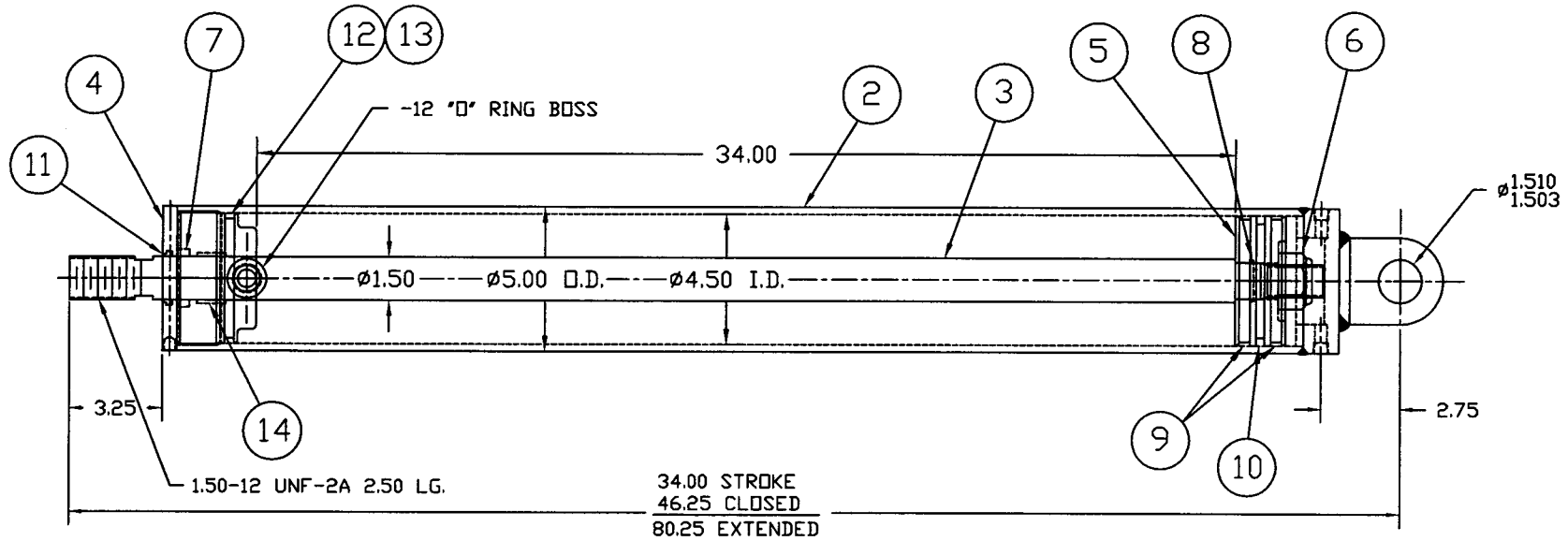
ASSEMBLY
NUMBER

DESCRIPTION

1801258 SWING DRIVE SYSTEM

ITEM NO.	PART NUMBER	DESCRIPTION	QTY USED
2	1800387	SWING CYLINDER	2
3	1800806	1 1/2" DIAMETER PIN WELDMENT	2
4	1800809	CONNECTOR ASSEMBLY	2
5	1800451	H.H.C.S. 3/8-16 X 3/4" LONG	2
6	1800811	ALLEN SET SCREW 1/2-13 X 1/2 LG	4
7	1800807	3/8" DIAMETER 1/8" THICK BRASS DISC	4
8	1800568	3/8" LOCK WASHER	2
9	1800132	SPROCKET	1
10	1800065	H.H.C.S. 5/8-18 X 3 3/4" LONG	12
11	1800531	ESNA HEX NUT 5/8-18	12
12	1800166	ROLLER CHAIN	1
13	1800356	STEEL BAR W/HOLE	1
14	1800476	H.H.C.S. 5/8-11 X 2" LONG	1
15	1800357	HEADLOCK PLATE	1

CYLINDER OPERATING PRESSURE : 2050 PSI.
 OVERLOAD RELIEF PRESSURE: 3000 PSI



NOTE:
 MODEL 181T : CONVERTS FROM 2007 SERIAL NUMBER.

TOLERANCES UNLESS OTHERWISE SPECIFIED FRACTIONS +/- 3 PLACE DECIMALS +/- 2 PLACE DECIMALS +/- 1 PLACE DECIMALS +/- ANGLES		SWINGMASTER CORPORATION 11415 MELROSE AVENUE FRANKLIN PARK, ILLINOIS 60131	
SEE SWINGMASTER SPECIFICATION 0-1 FOR TOLERANCES NOT SPECIFIED		SWING CYLINDER	
DIMENSIONS ARE IN INCHES DO NOT SCALE DRAWING SCALE: 1/4		DRAWN BY: JJK. DATE: 12-20-06	DRAWING NO. D-61N

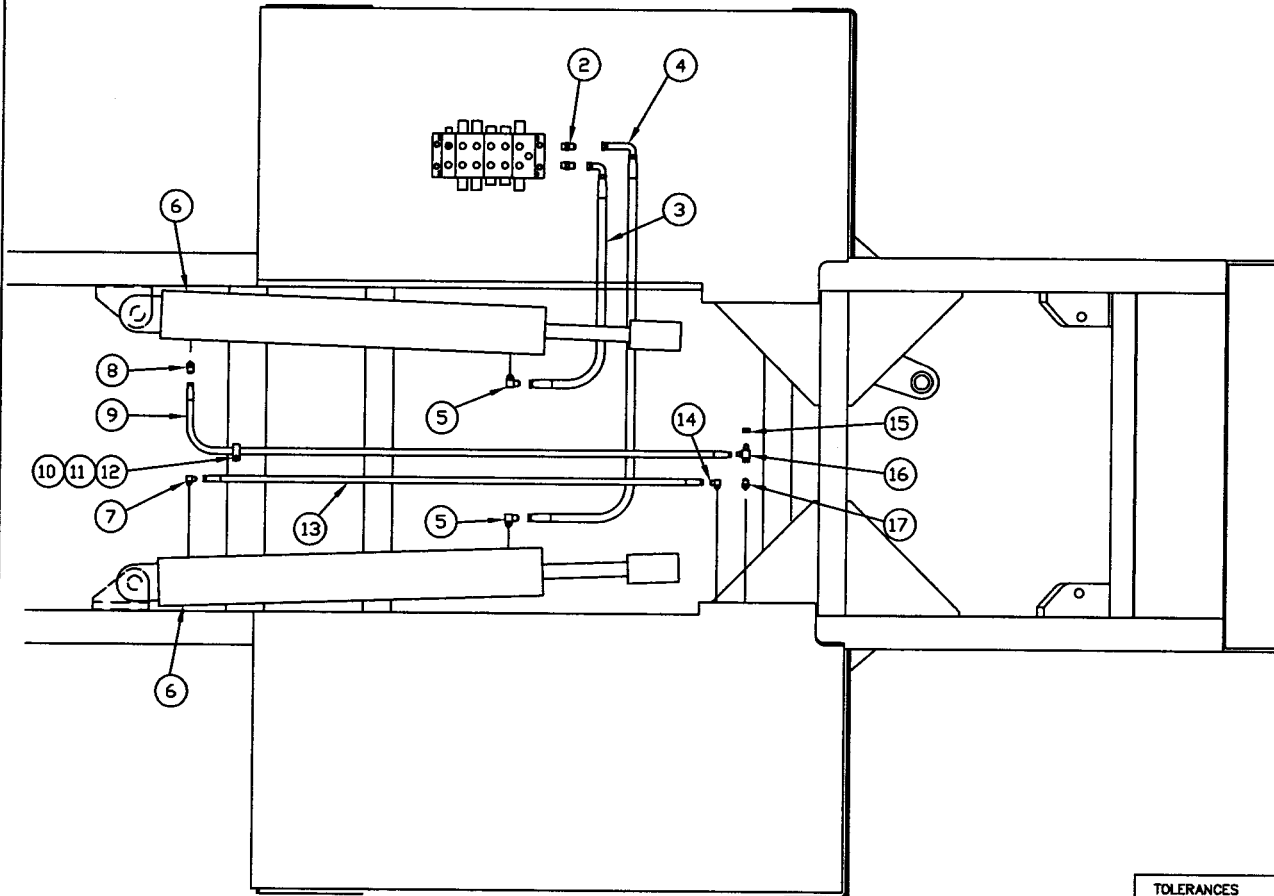
SWINGMASTER CORPORATION

PARTS BOOK

MACHINE	SECTION	22
MODEL 181 SWINGLOADER	SWING DRIVE SYSTEM	

ASSEMBLY NUMBER	DESCRIPTION
1806635	HYD. CYLINDER ASS'Y

ITEM NO.	PART NUMBER	DESCRIPTION	QTY USED
002	1806636	CASE WLDM'T	1
003	1806639	ROD	1
004	1806637	CAP	1
005	1806638	PISTON	1
006	1806640	LOCK NUT	1
007	1806341	ROD SEAL	1
008	1806617	"O" RINGG	1
009	1806461	WEAR RING	2
010	1806462	PISTON SEAL	1
011	1806345	WIPER	1
012	1806465	O-RING	1
013	1806466	BACKUP RING	1
014	1806349	WEAR RING	2



1 LINES AND FITTINGS INSTALLATION

3	12-5-90
REV.NO.	DATE

TOLERANCES
 UNLESS OTHERWISE SPECIFIED
 FRACTIONS +/-
 3 PLACE DECIMALS +/-
 2 PLACE DECIMALS +/-
 1 PLACE DECIMALS +/-
 ANGLES
 SEE SWINGMASTER SPECIFICATION
 G-1 FOR TOLERANCES NOT SPECIFIED
 DIMENSIONS ARE IN INCHES
 DO NOT SCALE DRAWING
 SCALE: NONE

SWINGMASTER CORPORATION
 11415 MELROSE AVENUE
 FRANKLIN PARK, ILL. 60131
 SWING CYLINDER LINES AND FITTINGS
 DRAWN BY: J.R.
 DATE: 1-6-87
 DRAWING NO.
 C-51

SWINGMASTER CORPORATION

PARTS BOOK

MACHINE

SECTION

22

MODEL 181 SWINGLOADER

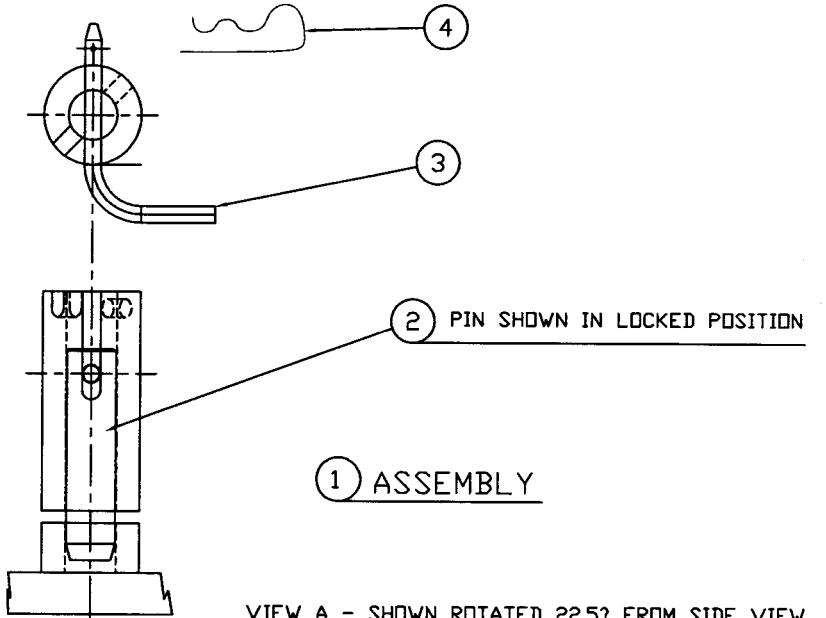
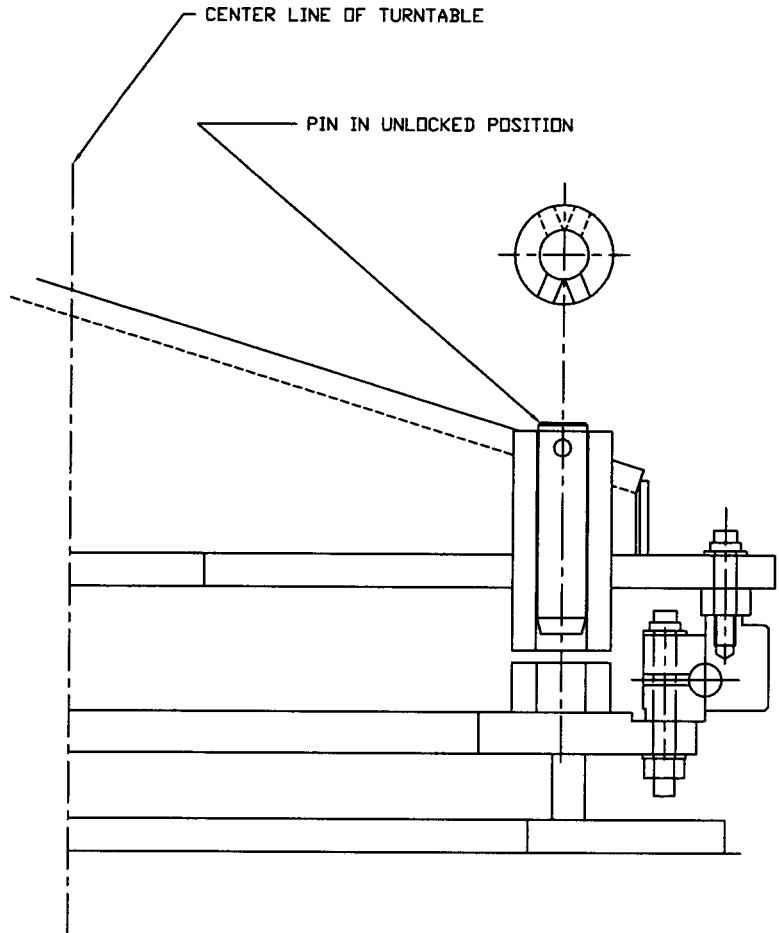
SWING DRIVE SYSTEM

ASSEMBLY
NUMBER

DESCRIPTION

1801248 SWING CYLINDER LINES AND FITTINGS

ITEM NO.	PART NUMBER	DESCRIPTION	QTY USED
2	1800765	STRAIGHT MALE 1/2 O-RING TO 1/2 TUBE	2
3	1801330	HOSE ASSEMBLY 2781-8	1
4	1804654	HOSE ASSEMBLY 2781-8	1
5	1800800	90 DEG MALE ELBOW 3/4 O-RING TO 1/2 TUBE	2
6	1800654	1/4" PIPE PLUG-SOCKET HEAD	2
7	1800777	90 DEG MALE ELBOW 1/4 PIPE TO 1/4 TUBE	1
8	1800751	STRAIGHT MALE 1/4 PIPE TO 1/4 TUBE	1
9	1804655	HOSE ASSEMBLY 1503-4	1
10	1800739	1/2" DIAMETER CLAMP	1
11	1800452	H.H.C.S. 3/8-16 X 1" LONG	1
12	1800514	HEX NUT 3/8-16	1
13	1801333	HOSE ASSEMBLY 1503-4	1
14	1800783	90 DEG MALE ELBOW 1/2 PIPE TO 1/4 TUBE	1
15	1800884	1/4" TUBE CAP NUT	1
16	1801597	1/4 TUBE RUN TEE M - F SWIVEL - M	1
17	1804330	MALE CONNECTOR 1/2 PIPE TO 1/4 TUBE	1



VIEW A - SHOWN ROTATED 22.5° FROM SIDE VIEW

<p>TOLERANCES</p> <p>UNLESS OTHERWISE SPECIFIED FRACTIONS +/- 3 PLACE DECIMALS +/- 2 PLACE DECIMALS +/- 1 PLACE DECIMALS +/- ANGLES</p> <p>SEE SWINGMASTER SPECIFICATION G-1 FOR TOLERANCES NOT SPECIFIED</p> <p>DIMENSIONS ARE IN INCHES DO NOT SCALE DRAWING SCALE: 1/4</p>		<p>SWINGMASTER CORPORATION</p> <p>11415 MELROSE AVENUE FRANKLIN PARK, ILLINOIS 60131</p>	
		<p>SWING DRIVE LOCK PIN INSTALLATION</p>	
		<p>DRAWN BY: J.R.</p> <p>DATE: 1-8-87</p>	<p>DRAWING NO.</p> <p>H-61</p>

SWINGMASTER CORPORATION

PARTS BOOK

MACHINE

SECTION

22

MODEL 181 SWINGLOADER

SWING DRIVE SYSTEM

ASSEMBLY
NUMBER

DESCRIPTION

1803031 SWING DRIVE LOCK PIN INSTALLATION

ITEM NO.	PART NUMBER	DESCRIPTION	QTY USED
2	1800585	1 1/2" DIA X 6.41" LONG PIN	1
3	1801013	1/2" DIAMETER RETAINING PIN	1
4	1801014	1/2" HAIR SPRING COTTER PIN	1

SWINGMASTER CORPORATION

PARTS BOOK

MACHINE

SECTION

54

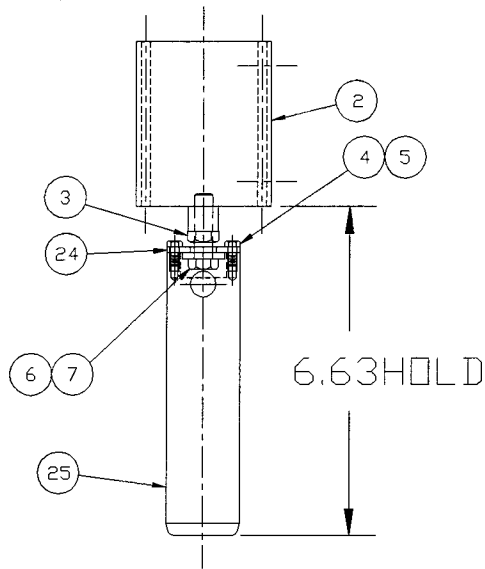
MODEL 181 SWINGLOADER

SPECIAL CUSTOMER SPEC.

ASSEMBLY		DESCRIPTION	QTY USED
NUMBER			
	1805335	TURNTABLE LOCK CYLINDER INSTALLATION	
ITEM NO.	PART NUMBER	DESCRIPTION	QTY USED
002	1805336	AIR CYLINDER	1
003	1803298	HEX JAM NUT 3/8-24	1
004	1800936	ROUND HEAD MACHINE SCREW #10-32 X 1/2	4
005	1800566	#10 LOCK WASHER	8
006	1805337	H.H.C.S. 3/8-24X1-1/4"LG	1
007	1800552	3/8" FLAT WASHER	1
008	1805338	R.H.M.S. #10-32X3-3/4"LG	2
009	1805339	BREATHER VENT	1
010	1801476	90 DEG 1/8 PIPE ELBOW M-F	1
011	1800750	STRAIGHT MALE 1/8 PIPE TO 1/4 TUBE	1
012	1800976	STRAIGHT 1/4 TUBE F-1503-4	6
013	1800705	1503-4 BULK HOSE/(IN)	0
014	1804224	STRAIGHT MALE BULKHEAD - 1/4 TUBE	2
015	1805340	90 DEG PIPE ELBOW	2
016	1805341	RECOIL AIR HOSE ASSEMBLY	1
017	1800705	1503-4 BULK HOSE/(IN)	0
018	1800777	90 DEG MALE ELBOW 1/4 PIPE TO 1/4 TUBE	1
019	1802506	3 WAY SOLENOID VALVE	1
020	1800751	STRAIGHT MALE 1/4 PIPE TO 1/4 TUBE	1
021	1800705	1503-4 BULK HOSE/(IN)	0
022	1805342	SOLENOID MTG. PLATE	1
023	1805343	PLATE	1
024	1805344	TURNTABLE LOCK PIN MTG. PLATE	1
025	1805345	TURNTABLE LOCK PIN	1
026	1801434	ROUND HEAD MACH SCREW #10-32 X 3/4" LONG	2
027	1802276	SWITCH - ON - ON (SINGLE POLE)	1
028	1800409	SYMBOL - RED BLANK	1

SWINGMASTER CORPORATION
 11415 MELROSE AVENUE
 FRANKLIN PARK, ILLINOIS 60131

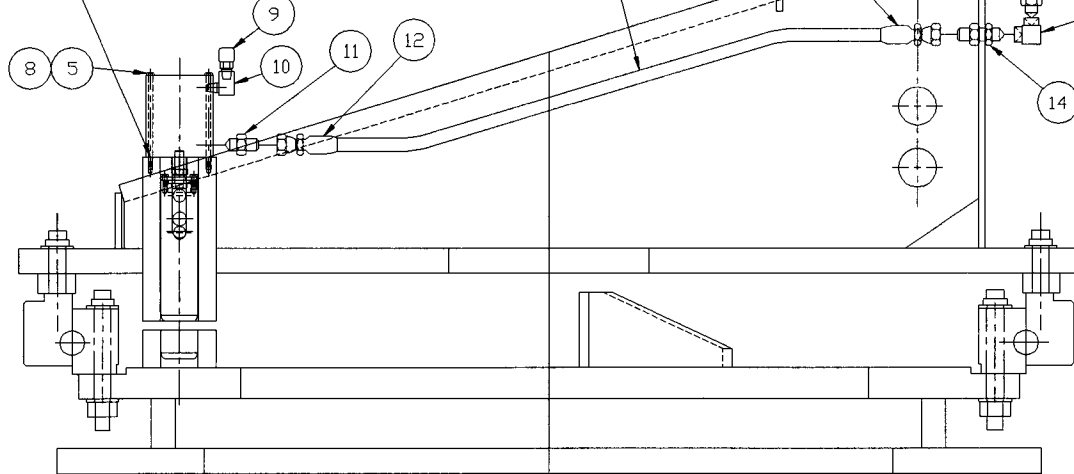
TEL: (847)451-1224



CYLINDER AND PIN ASSEMBLY

(SCALE : 1=2)

#21(Ø0.1590) DRILL 5/8" DEEP
#10-32 TAP 1/2" DEEP
(2) PLACES



1 INSTALLATION

TOLERANCES	
UNLESS OTHERWISE SPECIFIED	
FRACTIONS +/-	
3 PLACE DECIMALS +/-	
2 PLACE DECIMALS +/-	
1 PLACE DECIMALS +/-	
ANGLES	
SEE SWINGMASTER SPECIFICATION	
G-1 FOR TOLERANCES NOT SPECIFIED	
DIMENSIONS ARE IN INCHES	
DO NOT SCALE DRAWING	
SCALE: 1/4	

SWINGMASTER CORPORATION	
11415 MELROSE AVENUE FRANKLIN PARK, ILLINOIS 60131	
TURNTABLE LOCK CYLINDER INSTALLATION	
MODEL 181	
DRAWN BY: J.K.	DRAWING NO.
DATE: 1-30-96	C-318