



TURNTABLE

SWINGMASTER CORPORATION

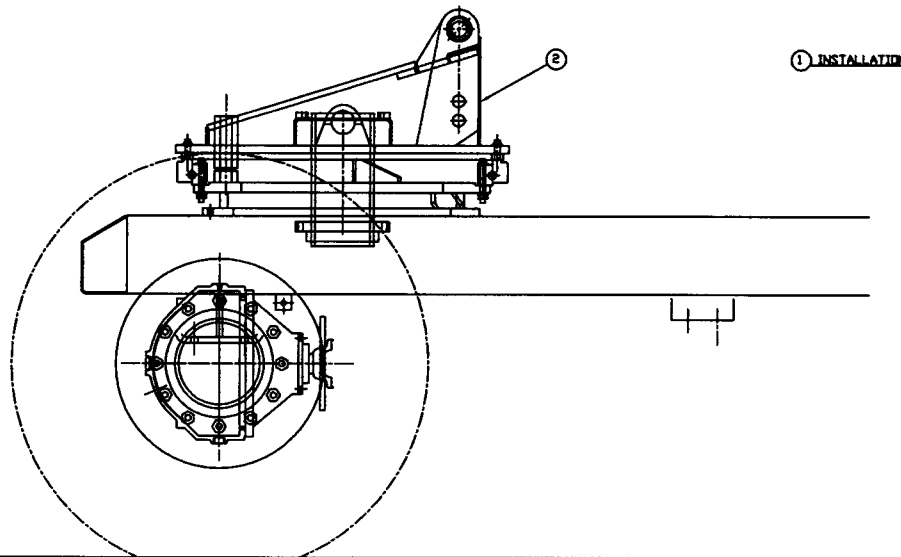
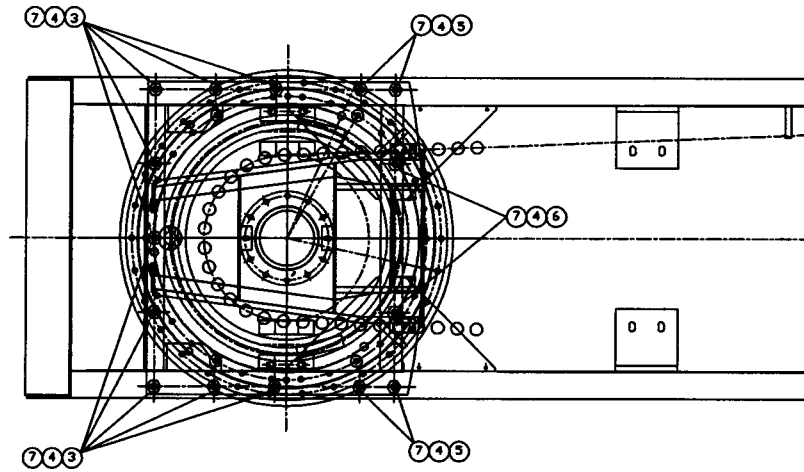
PARTS BOOK

MACHINE SECTION 21

MODEL 181 SWINGLOADER TURNTABLE

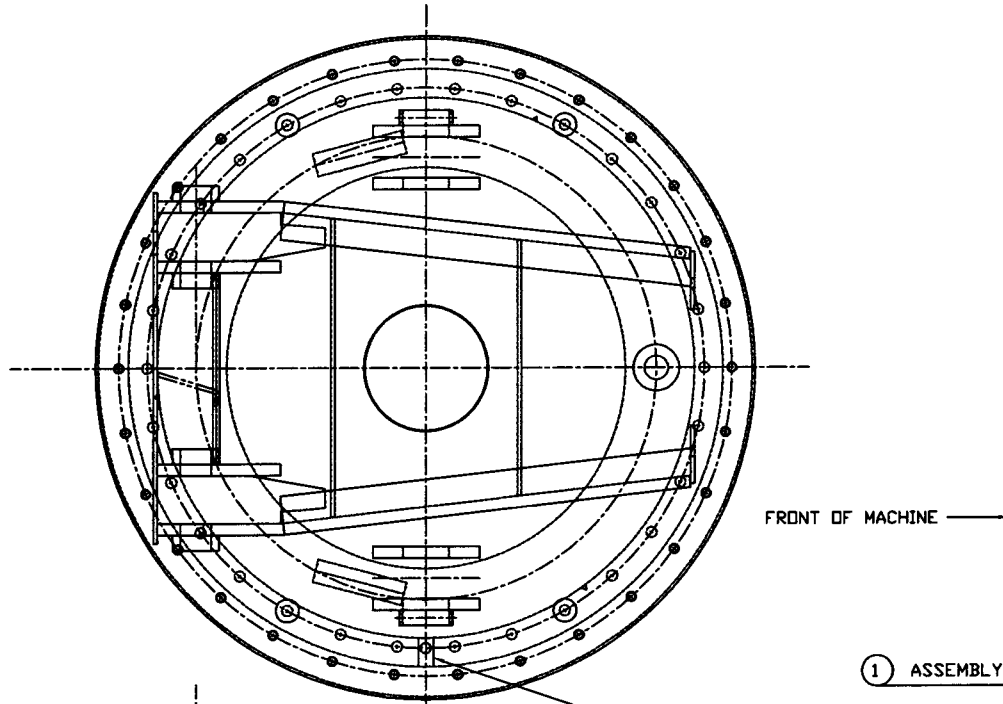
ASSEMBLY NUMBER	DESCRIPTION
1801257	TURNTABLE INSTALLATION

ITEM NO.	PART NUMBER	DESCRIPTION	QTY USED
2	1801361	TURNTABLE ASSEMBLY	1
3	1800481	H.H.C.S. 3/4-10 X 2 3/4" LONG	9
4	1800520	HEAVY HEX NUT 3/4-10	15
5	1800426	H.H.C.S. 3/4-10 X 13 1/4" LONG	4
6	1800482	H.H.C.S. 3/4-10 X 3" LONG	2
7	1800558	3/4" FLAT WASHER	30



① INSTALLATION

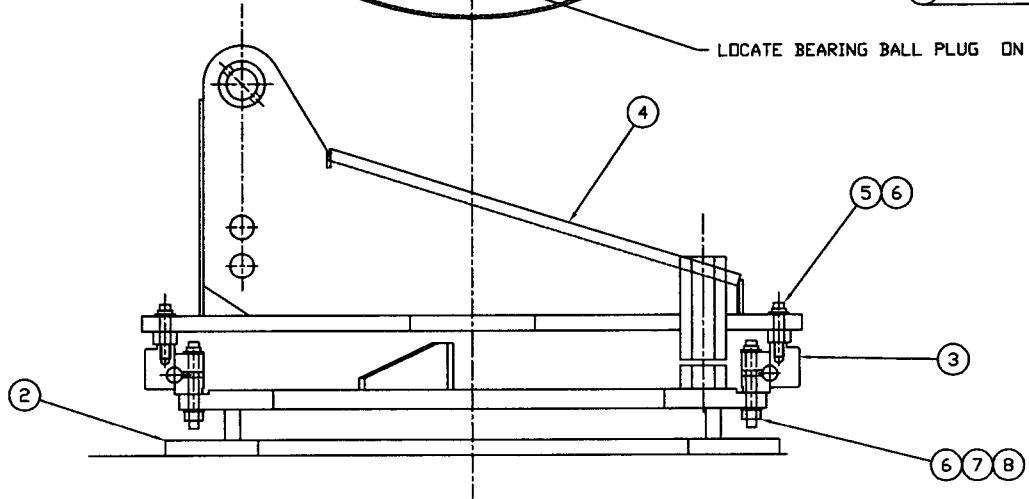
<p>TOLERANCES</p> <p>UNLESS OTHERWISE SPECIFIED</p> <p>FRACTIONS +/-</p> <p>3 PLACE DECIMALS +/-</p> <p>2 PLACE DECIMALS +/-</p> <p>1 PLACE DECIMALS +/-</p> <p>ANGLES</p> <p>SEE SWINGMASTER SPECIFICATION</p> <p>0-1 FOR TOLERANCES NOT SPECIFIED</p> <p>DIMENSIONS ARE IN INCHES</p> <p>DO NOT SCALE DRAWING</p> <p>SCALE: X</p>	<p>SWINGMASTER CORPORATION</p> <p>11415 MELROSE AVENUE FRANKLIN PARK, ILLINOIS 60131 (847) 481-1229</p>	
	<p>TURNTABLE INSTALLATION</p> <p>MODEL 181</p>	
<p>DRAWN BY: J.K.</p> <p>DATE: 4-22-10</p>	<p>DRAWING NO.</p> <p>D1-13</p>	



NOTE: LUBRICATE AND TORQUE ALL BOLTS TO 159 TO 175 FOOT-POUNDS.

① ASSEMBLY

LOCATE BEARING BALL PLUG ON INNER RACE HERE.



TOLERANCES UNLESS OTHERWISE SPECIFIED FRACTIONS +/- 3 PLACE DECIMALS +/- 2 PLACE DECIMALS +/- 1 PLACE DECIMALS +/- ANGLES	SWINGMASTER CORPORATION 730 INDUSTRIAL DRIVE ELKHART, INDIANA 46526	
	TURNTABLE ASSEMBLY MODEL 181	
SEE SWINGMASTER SPECIFICATION 0-1 FOR TOLERANCES NOT SPECIFIED	DRAWN BY: J.R. DATE: 12-19-06	DRAWING NO. D1-12

SWINGMASTER CORPORATION

PARTS BOOK

MACHINE	SECTION	21
MODEL 181 SWINGLOADER	TURNTABLE	

ASSEMBLY NUMBER	DESCRIPTION
1801361	TURNTABLE ASSEMBLY

ITEM NO.	PART NUMBER	DESCRIPTION	QTY USED
2	1800613	TURNTABLE BASE WELDMENT	1
3	1800367	TURNTABLE BEARING	1
4	1800133	TURNTABLE TOP WELDMENT	1
5	1800870	12 POINT FLANGED SCREW 5/8-11 X 2 3/4 LG	30
6	1800556	5/8" FLAT WASHER	90
7	1800518	HEAVY HEX NUT 5/8-11	30
8	1800871	12 POINT FLANGED CAP SCREW 5/8-11 X 5 LG	30