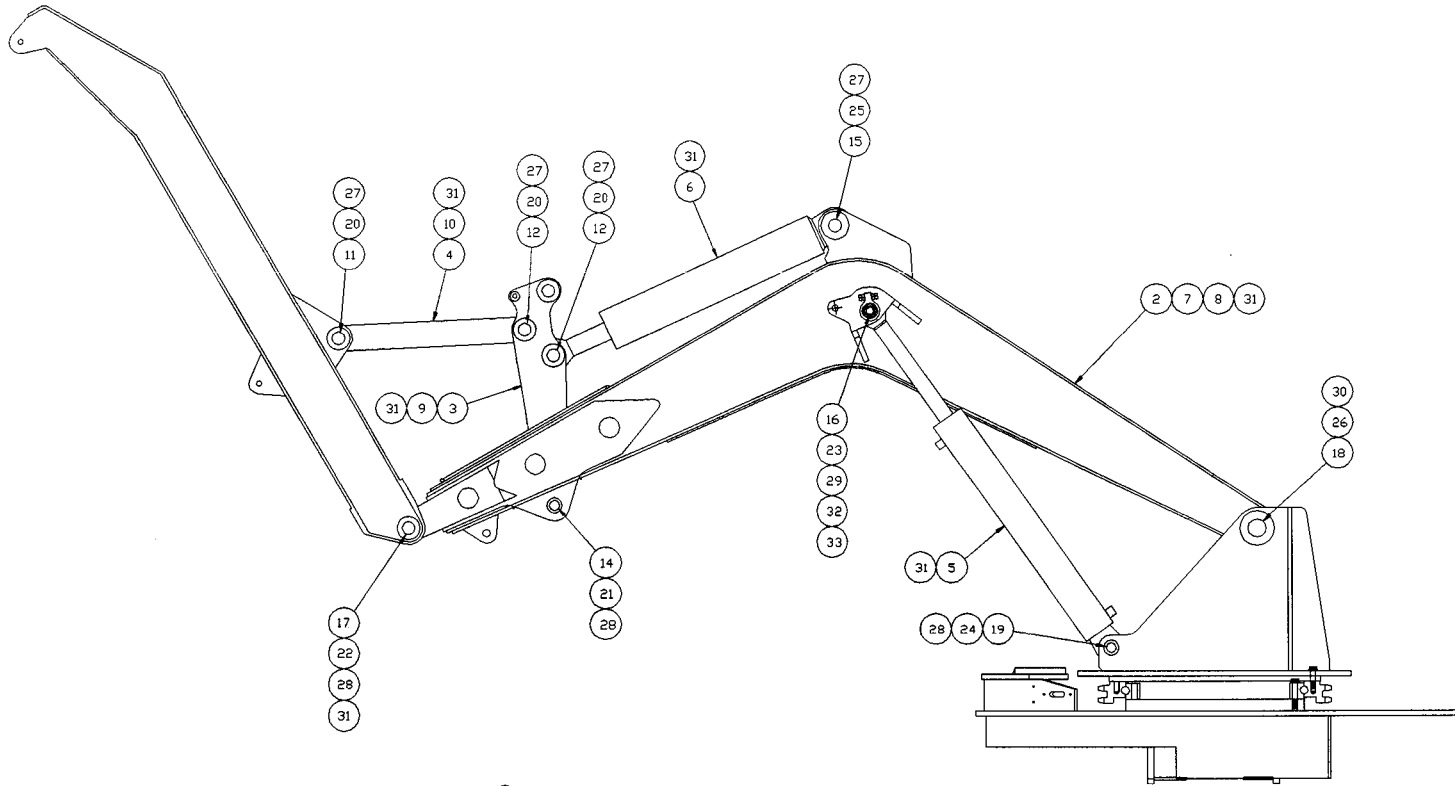


SECTION W

BOOM

99SL18020L0006 (B.N.)

S.W.N.G. LIFT & Bucket CYL. Began
BUT NOT 2000SL18020L007 (shipped Early.)



1 INSTALLATION

TOLERANCES	SWINGMASTER CORPORATION	
UNLESS OTHERWISE SPECIFIED	11415 MELROSE AVENUE	
FRACTIONS +/-	FRANKLIN PARK, ILLINOIS 60131	
3 PLACE DECIMALS +/-	BDCM INSTALLATION	
2 PLACE DECIMALS +/-	MODEL SL180-15	
1 PLACE DECIMALS +/-	DRAWN BY: J.K.	DRAWING NO.
ANGLES	DATE: 9-18-98	D-811
SEE SWINGMASTER SPECIFICATION	DIMENSIONS ARE IN INCHES	
Q-1 FOR TOLERANCES NOT SPECIFIED	DO NOT SCALE DRAWING	
	SCALE: 1=12	

MACHINE	SECTION	23
---------	---------	----

MODEL SL180 SWINGLOADER	BOOM
-------------------------	------

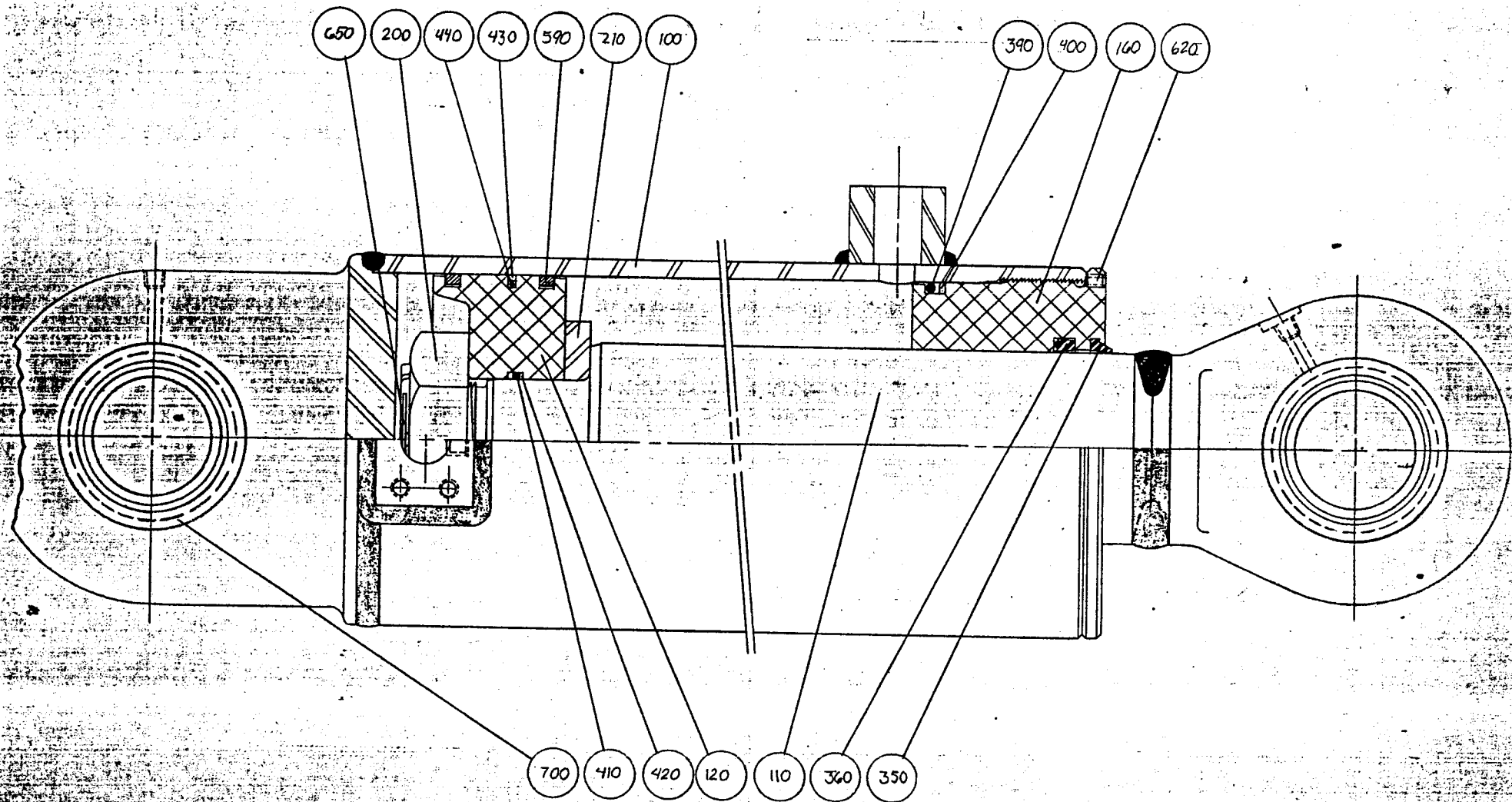
ASSEMBLY
NUMBER

DESCRIPTION

1805958

BOOM INSTALLATION

ITEM NO.	PART NUMBER	DESCRIPTION	QTY. USED
002	1805959	BOOM WELDMENT	1.00
003	1802171	ROCKER ARM WELDMENT	1.00
004	1805960	LINK WELDMENT	1.00
005	1805386	BOOM LIFT CYLINDER	2.00
006	1802174	ATTACHMENT CYLINDER	1.00
007	1806204	BUSHING	2.00
008	1802175	BUSHING - 2.50" I.D. X 3" LONG	2.00
009	1802180	BUSHING - 2.01" DIA. X 2.75" LONG	2.00
010	1802177	BUSHING - 2.50" I.D. X 3.75" LONG	2.00
011	1802181	PIN - 2.50" DIA. X 10.88" LONG	1.00
012	1802182	PIN - 2.50" DIA. X 10.38" LONG	2.00
014	1802184	PIN - 2.00" DIA. X 19.38" LONG	1.00
015	1802185	PIN - 2.50" DIA. X 9.50" LONG	1.00
016	1805961	PIN	1.00
017	1802187	PIN - 2.50" DIA. X 8.75" LONG	2.00
018	1805962	PIN	1.00
019	1805963	PIN	2.00
020	1801782	H.H.C.S. 3/4-10 X 6" LONG	3.00
021	1802188	H.H.C.S. 1/2-13 X 5" LONG	1.00
022	1802189	H.H.C.S. 1/2-13 X 5 1/2" LONG	2.00
023	1805964	PIN	1.00
024	1802191	H.H.C.S. 1/2-13 X 5" LONG	2.00
025	1802192	H.H.C.S. 3/4-10 X 6 3/4" LONG	1.00
026	1802193	H.H.C.S. 7/8-9 X 7" LONG	1.00
027	1800522	ESNA HEX NUT 3/4-10	4.00
028	1800516	ESNA HEX NUT 1/2-13	5.00
029	1800124	LOCK PLATE	2.00
030	1802194	ESNA NUT 7/8-9	1.00
031	1800663	STRAIGHT 1/8" MALE-PIPE GREASE FITTING	13.00
032	1800459	H.H.C.S. 3/8-16 X 1 3/4" LONG	4.00
033	1800568	3/8" LOCK WASHER	4.00



MACHINE

SECTION

23

MODEL 361 SWINGLOADER

BOOM

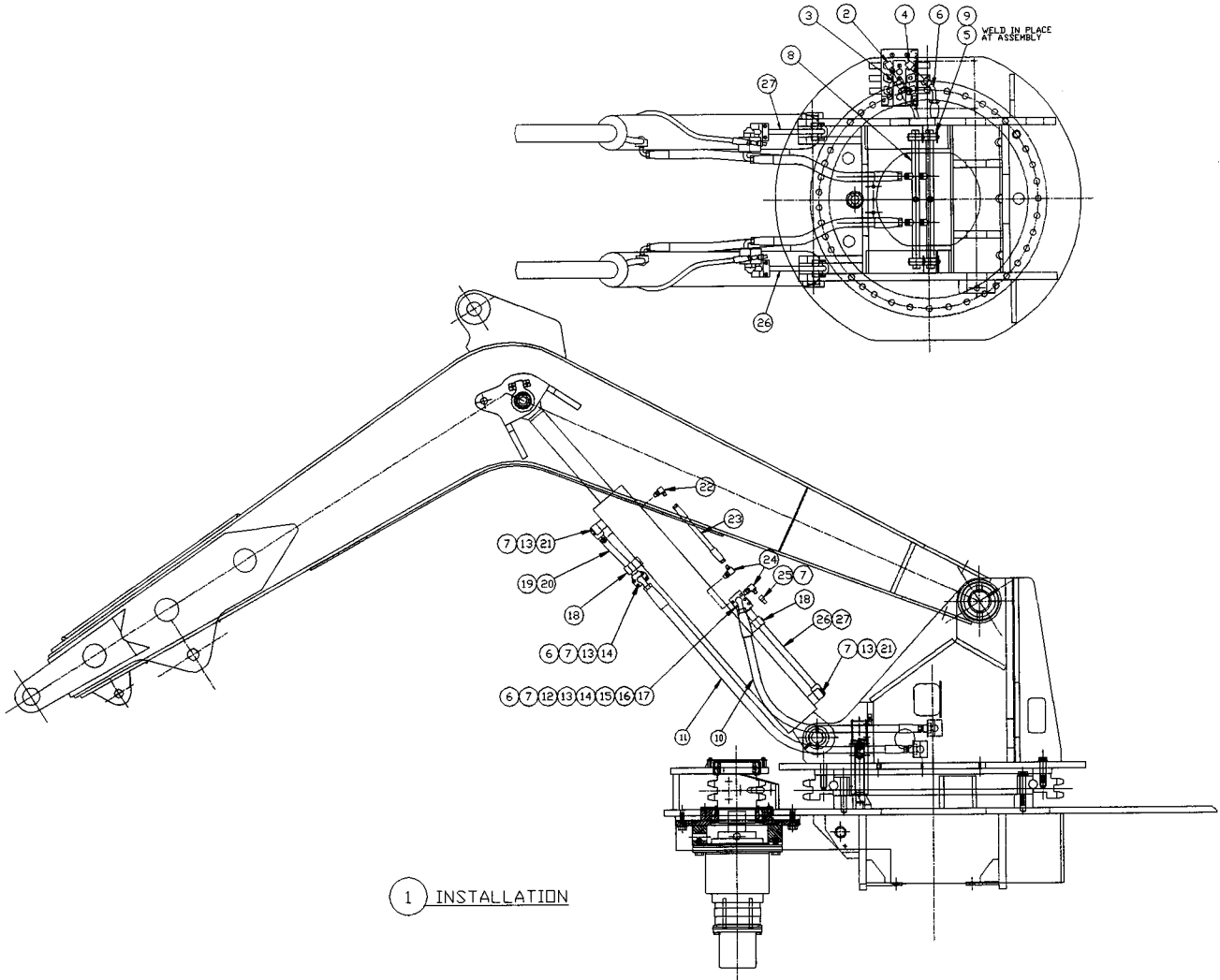
ASSEMBLY
NUMBER

DESCRIPTION

1802174

ATTACHMENT CYLINDER

ITEM NO.	PART NUMBER	DESCRIPTION	QTY. USED
100	8702518	CASE ASSEMBLY	1
110	8702519	SHAFT ASSEMBLY	1
120	8702520	PISTON	1
160	8702521	HEAD GLAND	1
200	8702522	PISTON NUT	1
210	8702523	THRUST PLATE	1
350	8702524	WIPER	1
360	8702525	U-CUP	1
390	8702526	O-RING	1
400	8702527	BACK-UP RING	1
410	8702528	O-RING	1
420	8702529	BACK-UP RING	2
430	8702530	PISTON SEAL	1
440	8702531	O-RING	1
590	8702532	PISTON RING	2
620	8702515	S.H.S.S. 1/4-20 X 3/8" LONG	1
650	8702533	COTTER KEY 5/32 X 3 1/2" LONG	1
700	8702534	BALL BUSHING	2
	8702901	SEAL KIT - HARD INCLUDES ITEMS 350-590,650	1
	8702902	SEAL KIT - SOFT INCLUDES ITEMS 350-440,650	1



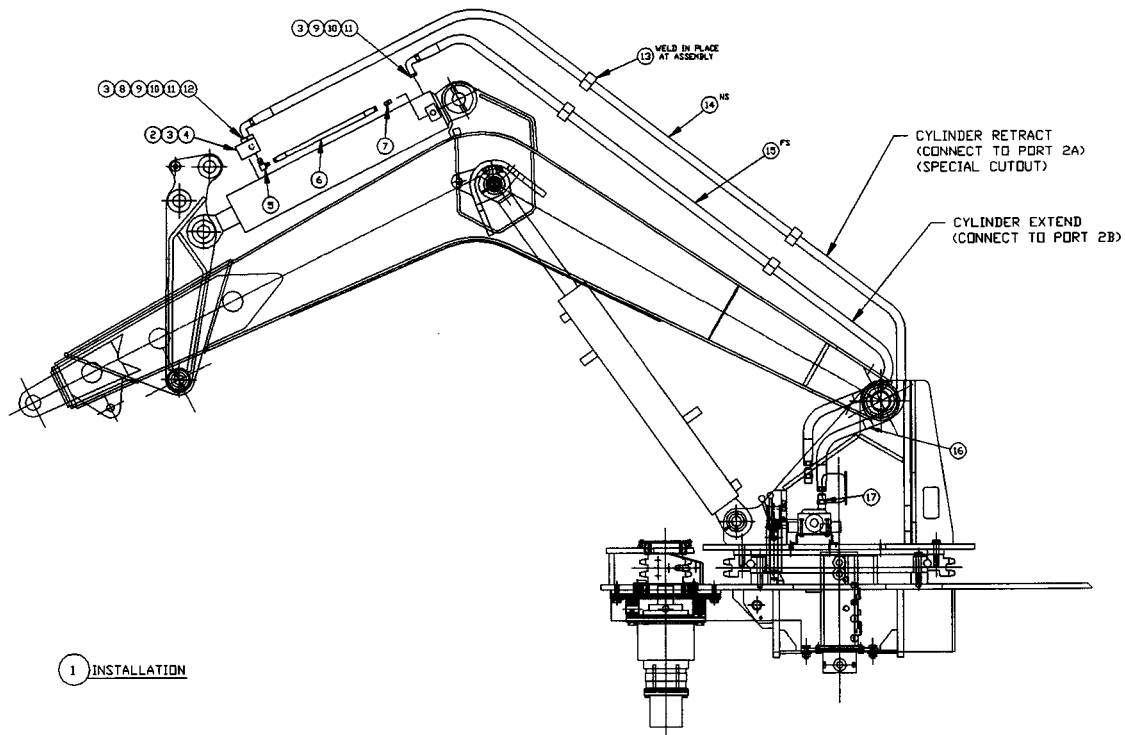
1 INSTALLATION

TOLERANCES UNLESS OTHERWISE SPECIFIED FRACTIONS +/- 3 PLACE DECIMALS +/- 2 PLACE DECIMALS +/- 1 PLACE DECIMALS +/- ANGLES	SWINGMASTER CORPORATION 11415 MELROSE AVENUE FRANKLIN PARK, ILLINOIS 60131	
	BOOM LIFT CYLINDER HYDRAULIC LINES AND FITTINGS INSTALLATION	
SEE SWINGMASTER SPECIFICATION G-1 FOR TOLERANCES NOT SPECIFIED	DRAWING NO. SL180-15	DRAWN BY: J.K. DATE: 9-16-98
DIMENSIONS ARE IN INCHES DO NOT SCALE DRAWING SCALE:	D-806	

MACHINE	SECTION	23
-----	-----	-----
MODEL SL180 SWINGLOADER	BOOM	
-----	-----	-----

ASSEMBLY NUMBER	DESCRIPTION
-----	-----
1805947	BOOM LIFT CYLINDER HYD. LINES & FITTINGS
-----	-----

ITEM NO.	PART NUMBER	DESCRIPTION	QTY. USED
-----	-----	-----	-----
002	1805948	LONG O-RING ELBOW	1.00
003	1805949	HOSE ASSEMBLY	1.00
004	1800801	90 DEG MALE ELBOW 3/4 O-RING TO 3/4 TUBE	1.00
005	1805950	MOUNTING BRACKET	4.00
006	1805951	HOSE ASSEMBLY	1.00
007	1800876	DUST CAP	2.00
008	1805952	HYDRAULIC MANIFOLD	2.00
009	1802317	HOSE CLAMP - 1 1/4"	4.00
010	1802313	HOSE ASSEMBLY 2781-12	2.00
011	1802314	HOSE ASSEMBLY 2781-12	2.00
012	1800210	COUNTERBALANCE VALVE	2.00
013	1800817	3/4" O-RING FOR SPLIT FLANGE HEAD	10.00
014	1800823	3/4" SPLIT FLANGE CLAMP HALF	8.00
015	1802318	12 POINT F.H.C.S. 3/8-16 X 3 1/2" LONG	4.00
016	1802319	12 POINT F.H.C.S. 3/8-16 X 4" LONG	4.00
017	1800970	3/8" O-RING BOSS PLUG-HEX HEAD	2.00
018	1800228	HOSE CLAMP - 1"	4.00
019	1800152	TUBE WELDMENT - ROD END - LEFT SIDE	1.00
020	1800154	TUBE WELDMENT - ROD END - RIGHT SIDE	1.00
021	1801667	12 POINT F.H.C.S. 3/8-16 X 1 3/4" LONG	16.00
022	1800794	90 DEG MALE ELBOW 3/8 O-RING TO 3/8 TUBE	2.00
023	1802315	HOSE ASSEMBLY 1503-6	2.00
024	1801814	3/8 MALE TEE - O-RING-TUBE-TUBE	2.00
025	1801668	3/8" MALE QUICK DISCONNECT	2.00
026	1800136	LIFT CYLINDER CASE SIDE PORT TUBE	1.00
027	1800134	LIFT CYLINDER CASE SIDE PORT TUBE	1.00
-----	-----	-----	-----



1 INSTALLATION

TOLERANCES
 UNLESS OTHERWISE SPECIFIED
 FRACTIONS +/-
 3 PLACE DECIMALS +/-
 2 PLACE DECIMALS +/-
 1 PLACE DECIMALS +/-
 ANGLES
 SEE SWINGMASTER SPECIFICATION
 Q-1 FOR TOLERANCES NOT SPECIFIED
 DIMENSIONS ARE IN INCHES
 DO NOT SCALE DRAWING
 SCALE:

SWINGMASTER CORPORATION
 11415 MELROSE AVENUE
 FRANKLIN PARK, ILLINOIS 60131
 ATTACHMENT CYLINDER LINES &
 FITTINGS INSTALLATION
 SL180-15
 DRAWN BY: J.K. DRAWING NO.
 DATE: 9-17-98
 D-809

MACHINE

SECTION

23

MODEL SL180 SWINGLOADER

BOOM

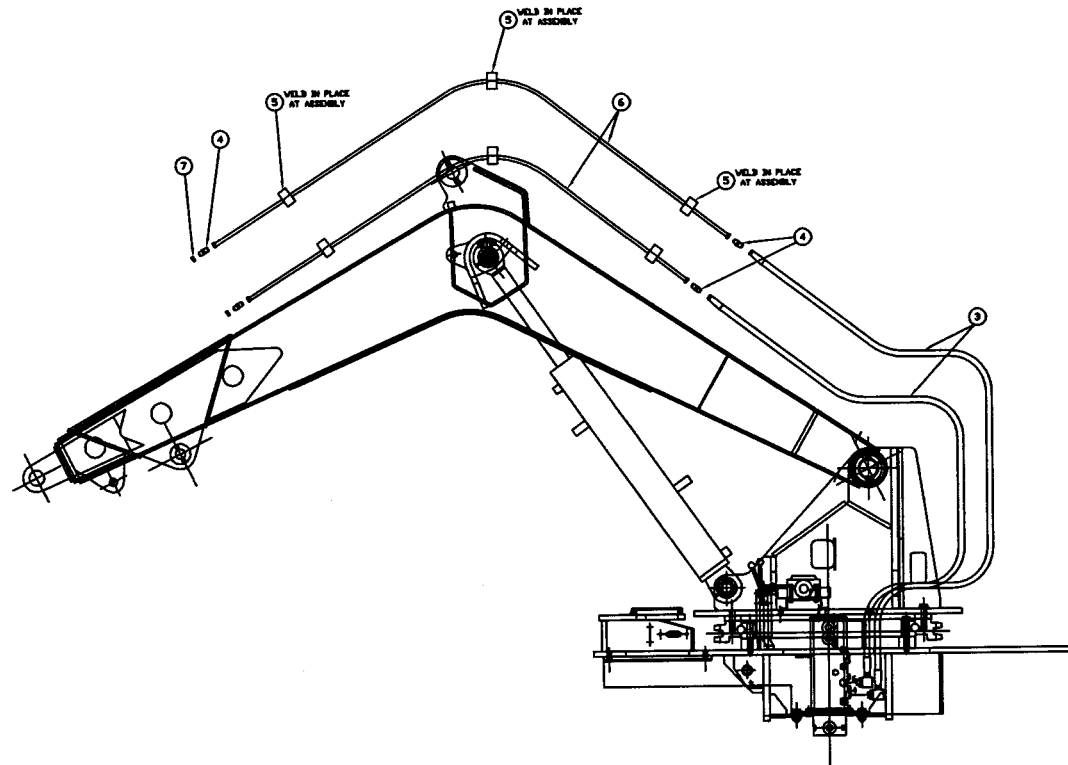
ASSEMBLY
NUMBER

DESCRIPTION

1805953

ATTACHMENT CYL. LINES & FITTINGS INSTALL

ITEM NO.	PART NUMBER	DESCRIPTION	QTY. USED
002	1800209	COUNTERBALANCE VALVE	1.00
003	1800819	1" O-RING FOR SPLIT FLANGE HEAD	3.00
004	1800970	3/8" O-RING BOSS PLUG-HEX HEAD	1.00
005	1800794	90 DEG MALE ELBOW 3/8 O-RING TO 3/8 TUBE	1.00
006	1802408	HOSE ASSEMBLY 1503-6	1.00
007	1800762	STRAIGHT MALE 3/8 O-RING TO 3/8 TUBE	1.00
008	1802319	12 POINT F.H.C.S. 3/8-16 X 4" LONG	2.00
009	1800867	12 POINT FLANGED SCREW 3/8-16 X 1 1/4 LG	6.00
010	1800568	3/8" LOCK WASHER	10.00
011	1800824	1" SPLIT FLANGE CLAMP HALF	4.00
012	1802318	12 POINT F.H.C.S. 3/8-16 X 3 1/2" LONG	2.00
013	1800230	HOSE CLAMP - 1-1/2"	4.00
014	1805954	HOSE ASSEMBLY	1.00
015	1805955	HOSE ASSEMBLY	1.00
016	1802411	TWIN CLAMP ASSEMBLY - 1 1/2"	1.00
017	1800771	STRAIGHT MALE 3/4 O-RING TO 1 TUBE	2.00



1 INSTALLATION

TOLERANCES UNLESS OTHERWISE SPECIFIED FRACTIONS +/- 3 PLACE DECIMALS +/- 2 PLACE DECIMALS +/- 1 PLACE DECIMALS +/- ANGLES SEE SWINGMASTER SPECIFICATION 0-1 FOR TOLERANCES NOT SPECIFIED DIMENSIONS ARE IN INCHES DO NOT SCALE DRAWING SCALE:	SWINGMASTER CORPORATION 11415 MELROSE AVENUE FRANKLIN PARK, ILLINOIS 60131	
	ATTACHMENT LINES & FITTINGS INSTALLATION	
	MODEL SL180-15	DRAWING NO.
	DRAWN BY: J.K. DATE: 9-18-98	D-810

MACHINE	SECTION	53
-----	-----	-----
MODEL SL180 SWINGLOADER	HYDRAULIC SYSTEM ACCES/	
-----	-----	-----

ASSEMBLY NUMBER	DESCRIPTION
-----	-----
1805956	ATTACHMENT LINES & FITTINGS INSTALLATION

ITEM NO.	PART NUMBER	DESCRIPTION	QTY USED
-----	-----	-----	-----
002	1800797	90 DEG MALE ELBOW 1/2 O-RING TO 5/8 TUBE	2
003	1802566	HOSE ASSEMBLY 2781-10	2
004	1801072	5/8 TUBE STRAIGHT MALE UNION	4
005	1800229	HOSE CLAMP - 5/8"	6
006	1805957	TUBE ASSEMBLY	2
007	1800887	5/8" TUBE CAP NUT	2