



SECTION W
BOOM

SWINGMASTER CORPORATION

PARTS BOOK

MACHINE

SECTION

MODEL 361 SWINGLOADER

BOOM

DESCRIPTION

BOOM INSTALLATION

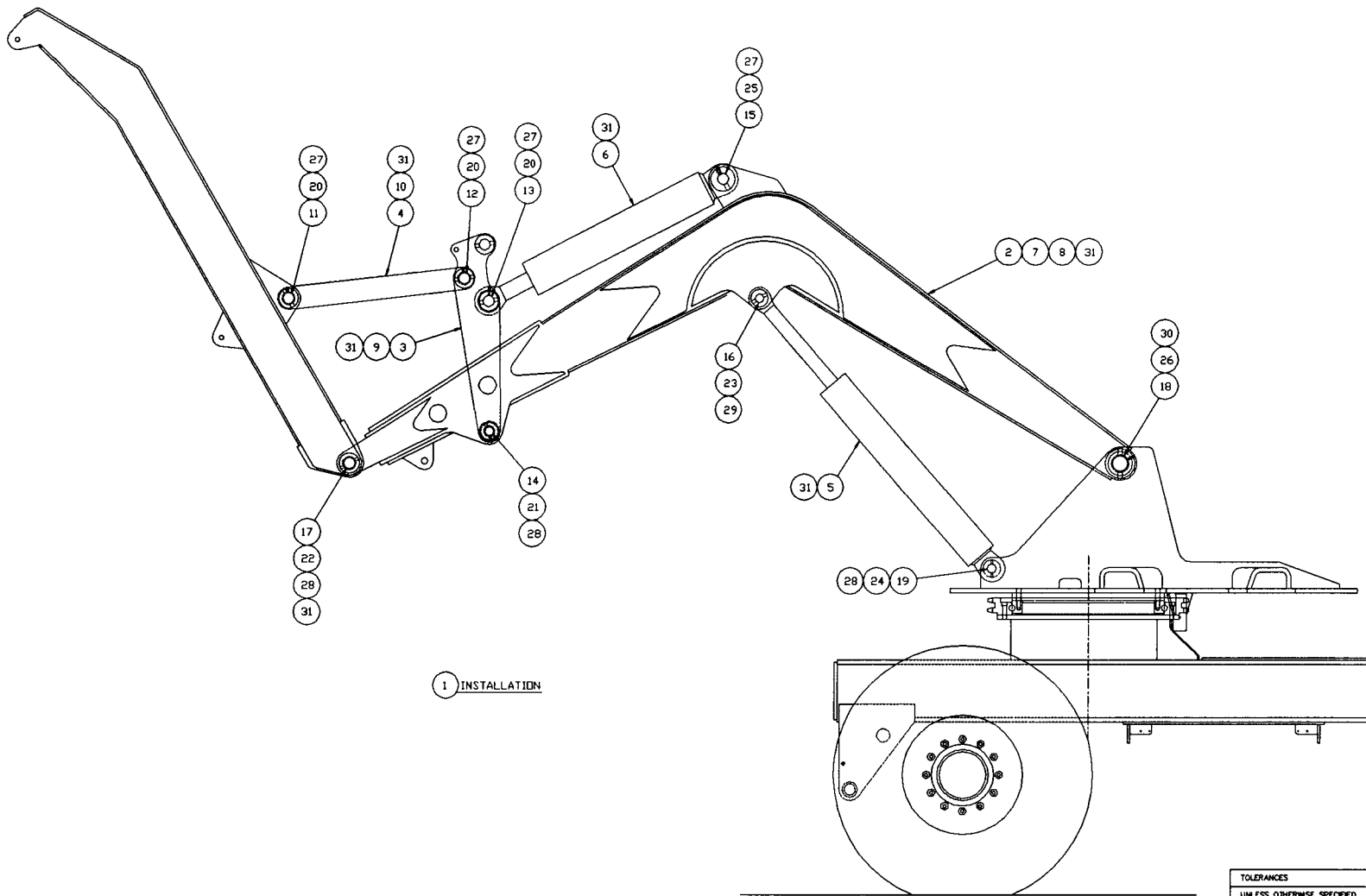
LIFT CYLINDER

ATTACHMENT CYLINDER

BOOM LIFT CYLINDER LINES AND FITTINGS

SWINGMASTER CORPORATION
11415 MELROSE AVENUE
FRANKLIN PARK, ILLINOIS 60131

TELEPHONE: (847) 451-1224



1 INSTALLATION

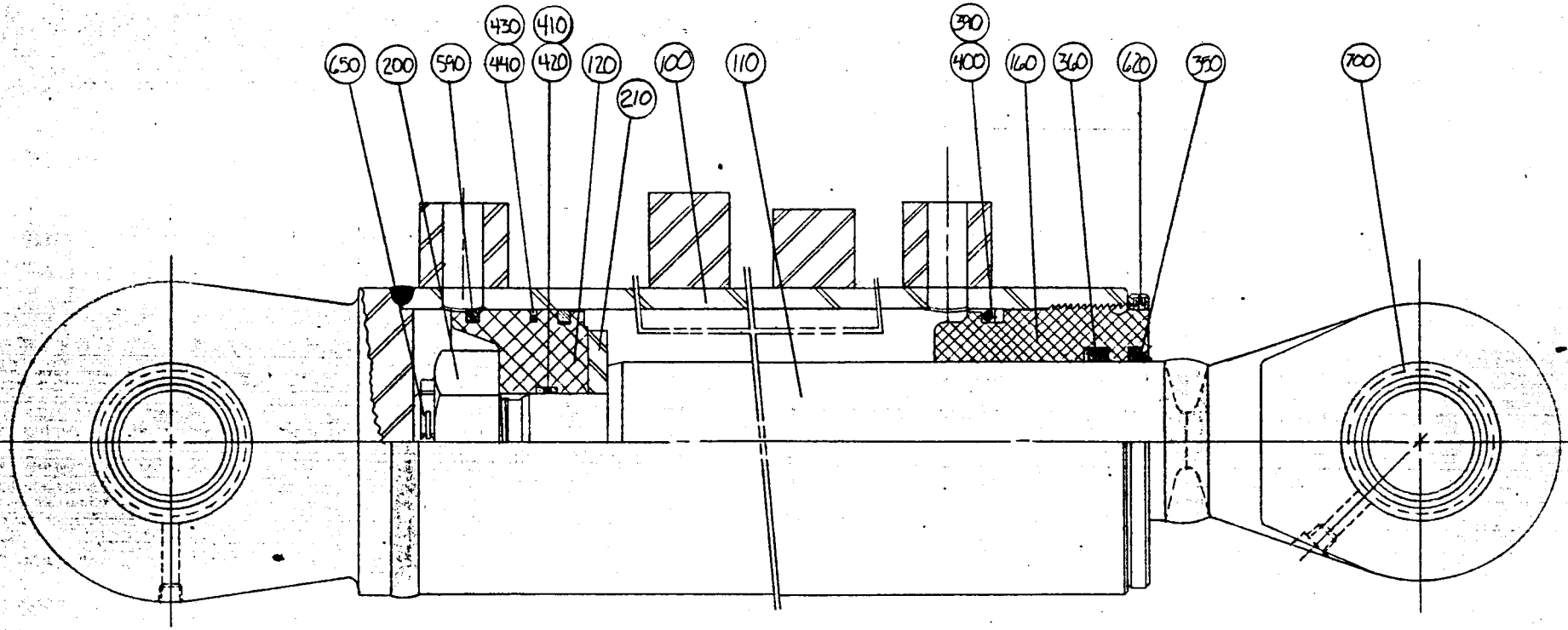
TOLERANCES
 UNLESS OTHERWISE SPECIFIED
 FRACTIONS +/-
 3 PLACE DECIMALS +/-
 2 PLACE DECIMALS +/-
 1 PLACE DECIMALS +/-
 ANGLES
 SEE SWINGMASTER SPECIFICATION
 G-1 FOR TOLERANCES NOT SPECIFIED
 DIMENSIONS ARE IN INCHES
 DO NOT SCALE DRAWING
 SCALE: 1=12

SWINGMASTER CORPORATION
 11415 MELROSE AVENUE
 FRANKLIN PARK, ILLINOIS 60131
 BOOM INSTALLATION
 FDR MODEL 361
 DRAWN BY: J.K. DRAWING NO. D-224
 DATE: 11-18-88

MACHINE	SECTION	23
MODEL 361 SWINGLOADER	BOOM	

ASSEMBLY NUMBER	DESCRIPTION
1802169	BOOM INSTALLATION

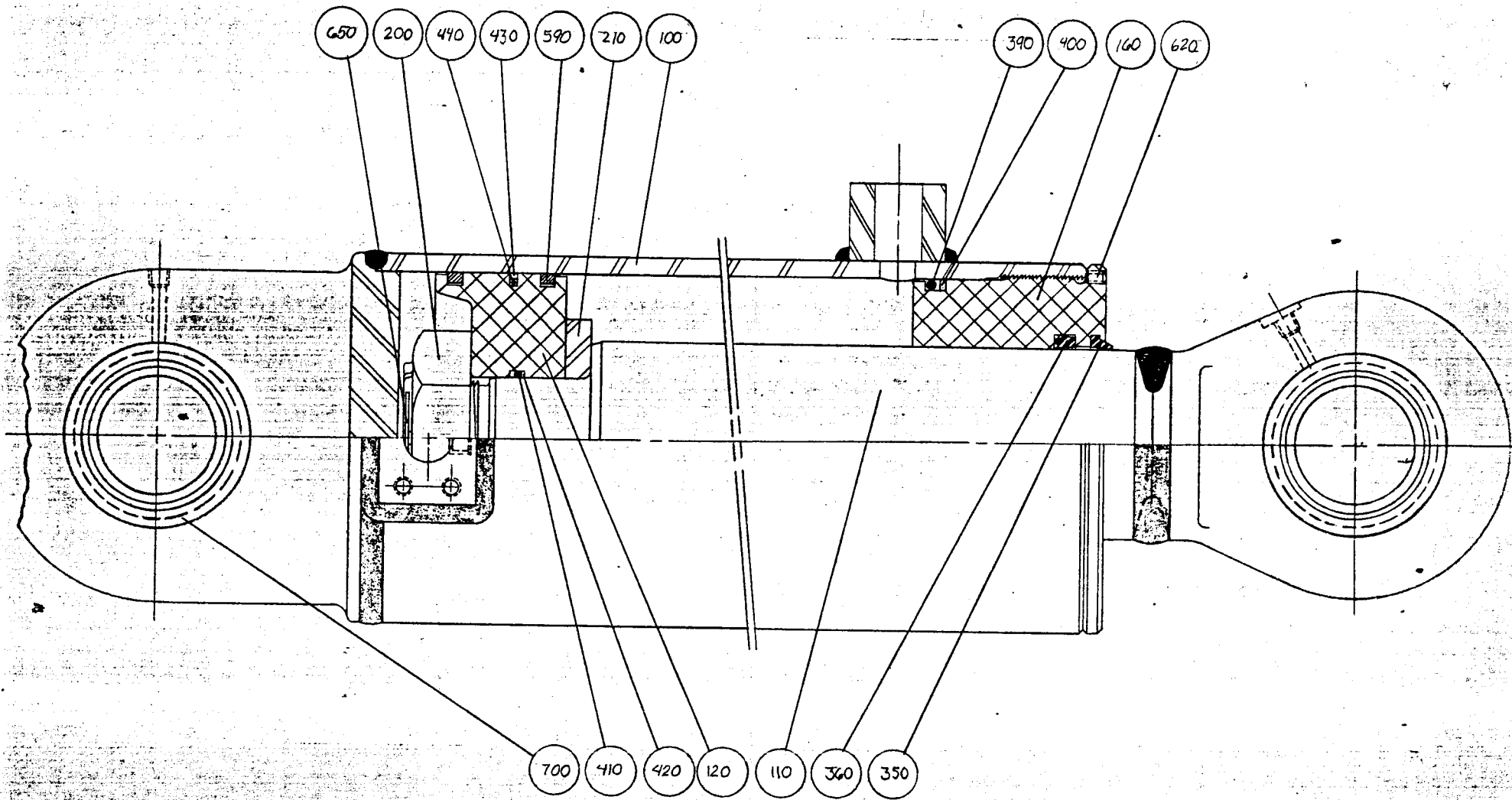
ITEM NO.	PART NUMBER	DESCRIPTION	QTY. USED
2	1802170	BOOM WELDMENT	1.00
3	1802171	ROCKER ARM WELDMENT	1.00
4	1802172	LINK WELDMENT	1.00
5	1802173	BOOM LIFT CYLINDER	2.00
6	1802174	ATTACHMENT CYLINDER	1.00
7	1802176	BUSHING - 3.50" I.D. X 5" LONG	2.00
8	1802175	BUSHING - 2.50" I.D. X 3" LONG	2.00
9	1802180	BUSHING - 2.01" DIA. X 2.75" LONG	2.00
10	1802177	BUSHING - 2.50" I.D. X 3.75" LONG	2.00
11	1802181	PIN - 2.50" DIA. X 10.88" LONG	1.00
12	1802182	PIN - 2.50" DIA. X 10.38" LONG	1.00
13	1802183	PIN - 2.50" DIA. X 9.88" LONG	1.00
14	1802184	PIN - 2.00" DIA. X 19.38" LONG	1.00
15	1802185	PIN - 2.50" DIA. X 9.50" LONG	1.00
16	1802186	PIN - 2.00" DIA. X 7.38" LONG	2.00
17	1802187	PIN - 2.50" DIA. X 8.75" LONG	2.00
18	1802178	BOOM FOOT PIN - 3.5" DIA. X 24.25" LONG	1.00
19	1802179	LIFT CYL. PIN - 2" DIA. X 6.56" LONG	2.00
20	1801782	H.H.C.S. 3/4-10 X 6" LONG	3.00
21	1802188	H.H.C.S. 1/2-13 X 5" LONG	1.00
22	1802189	H.H.C.S. 1/2-13 X 5 1/2" LONG	2.00
23	1802190	H.H.C.S. 5/8-11 X 5" LONG	2.00
24	1802191	H.H.C.S. 1/2-13 X 5" LONG	2.00
25	1802192	H.H.C.S. 3/4-10 X 6 3/4" LONG	1.00
26	1802193	H.H.C.S. 7/8-9 X 7" LONG	1.00
27	1800522	ESNA HEX NUT 3/4-10	4.00
28	1800516	ESNA HEX NUT 1/2-13	5.00
29	1801363	ESNA HEX NUT 5/8-11	2.00
30	1802194	ESNA NUT 7/8-9	1.00
31	1800663	STRAIGHT 1/8" PIPE-M GREASE FITTING	13.00



MACHINE	SECTION	23
-----	-----	-----
MODEL 361 SWINGLOADER	BOOM	
-----	-----	-----

ASSEMBLY NUMBER	DESCRIPTION
-----	-----
1802173	LIFT CYLINDER
-----	-----

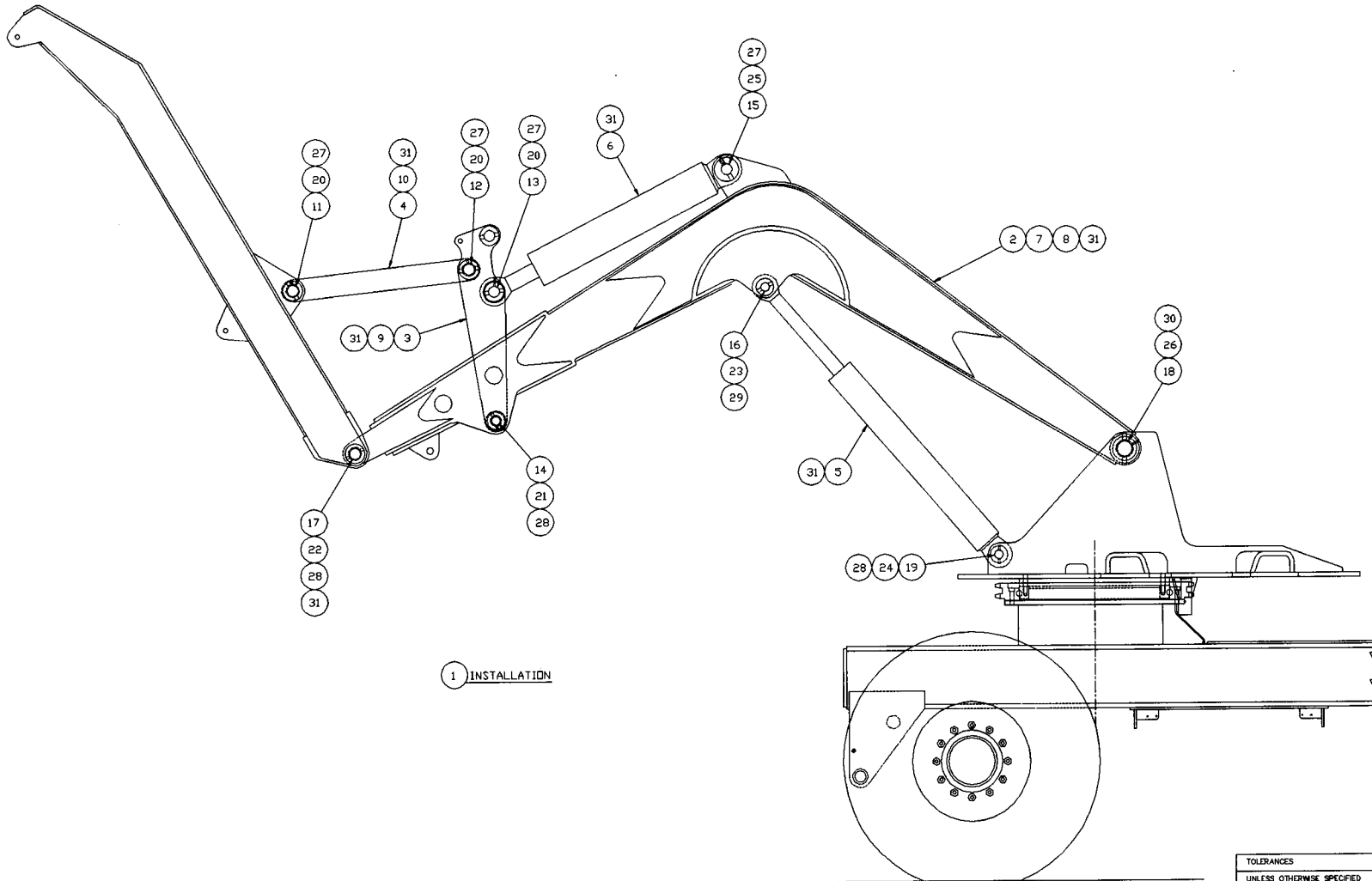
ITEM NO.	PART NUMBER	DESCRIPTION	QTY. USED
100	8702500	CASE ASSEMBLY	1
110	8702501	SHAFT ASSEMBLY	1
120	8702502	PISTON	1
160	8702503	HEAD GLAND	1
200	8702504	PISTON NUT	1
210	8702505	THRUST PLATE	1
350	8702506	WIPER	1
360	8702507	U-CUP	1
390	8702508	O-RING	1
400	8702509	BACK-UP RING	1
410	8702510	O-RING	1
420	8702511	BACK-UP RING	2
430	8702512	PISTON SEAL	1
440	8702513	O-RING	1
590	8702514	PISTON RING	2
620	8702515	S.H.S.S. 1/4-20 X 3/8" LONG	2
650	8702516	COTTER KEY 5/32 X 3" LONG	1
700	8702517	BALL BUSHING	2
	8702388	SEAL LIT - HARD INCLUDES ITEMS 350-590,650	1
	8702389	SEAL KIT - SOFT INCLUDES ITEMS 350-440,650	1



MACHINE	SECTION	23
-----	BOOM	-----
MODEL 361 SWINGLOADER		
-----		-----

ASSEMBLY NUMBER	DESCRIPTION
-----	-----
1802174	ATTACHMENT CYLINDER
-----	-----

ITEM PART NO. NUMBER	DESCRIPTION	QTY. USED
-----		-----
	8702518 CASE ASSEMBLY	
100	8702519 SHAFT ASSEMBLY	1
110	8702520 PISTON	1
120	8702521 HEAD GLAND	1
160	8702522 PISTON NUT	1
200	8702523 THRUST PLATE	1
210	8702524 WIPER	1
350	8702525 U-CUP	1
360	8702526 O-RING	1
390	8702527 BACK-UP RING	1
400	8702528 O-RING	1
410	8702529 BACK-UP RING	1
420	8702530 PISTON SEAL	2
430	8702531 O-RING	1
440	8702532 PISTON RING	1
590	8702515 S.H.S.S. 1/4-20 X 3/8" LONG	2
620	8702533 COTTER KEY 5/32 X 3 1/2" LONG	1
650	8702534 BALL BUSHING	1
700		2
	8702901 SEAL KIT - HARD	1 INCLU
	8702902 SEAL KIT - SOFT	1
	INCLUDES ITEMS 350-440,650	



1 INSTALLATION

TOLERANCES UNLESS OTHERWISE SPECIFIED FRACTIONS ±/− 3 PLACE DECIMALS ±/− 2 PLACE DECIMALS ±/− 1 PLACE DECIMALS ±/− ANGLES SEE SWINGMASTER SPECIFICATION C-1 FOR TOLERANCES NOT SPECIFIED DIMENSIONS ARE IN INCHES DO NOT SCALE DRAWING SCALE 1/1=12	SWINGMASTER CORPORATION 11415 MELROSE AVENUE FRANKLIN PARK, ILLINOIS 60131	
	BOOM INSTALLATION	
FDR NO. _____ DRAWN BY: _____ DATE: 5-13-96	DRAWING NO. D-680	

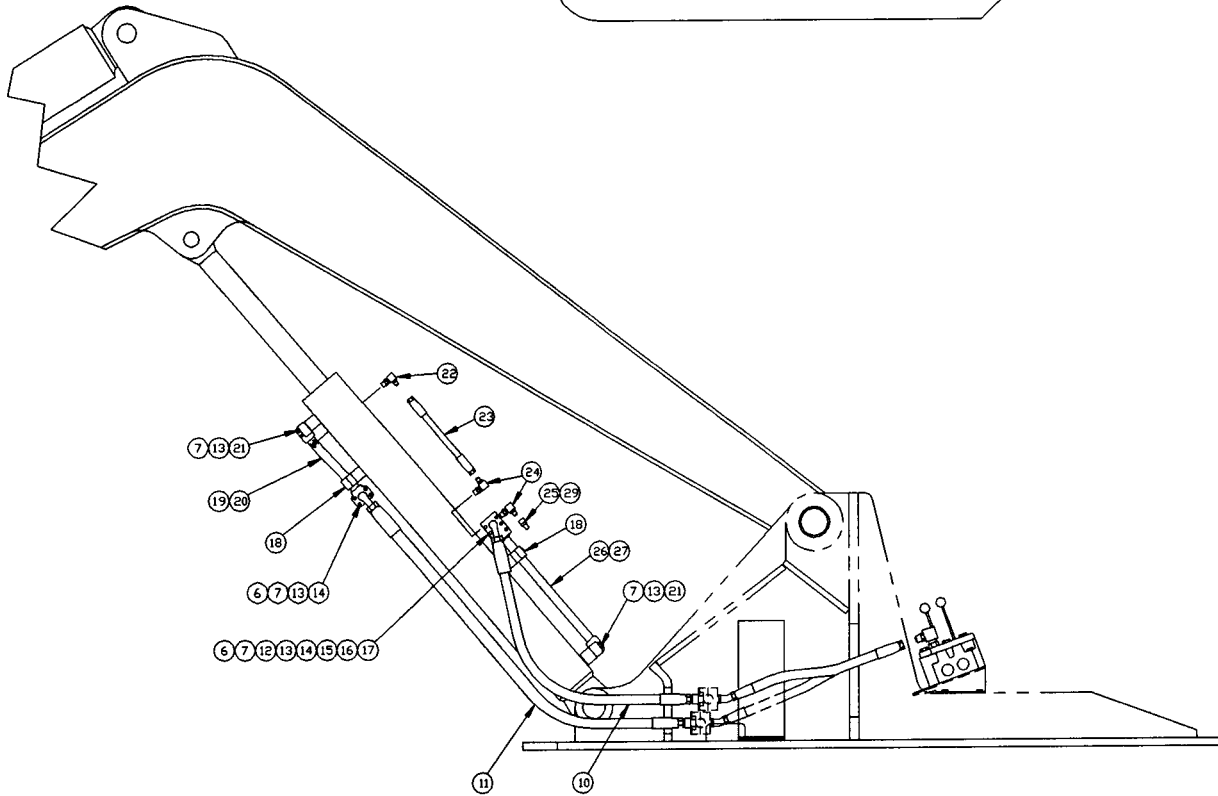
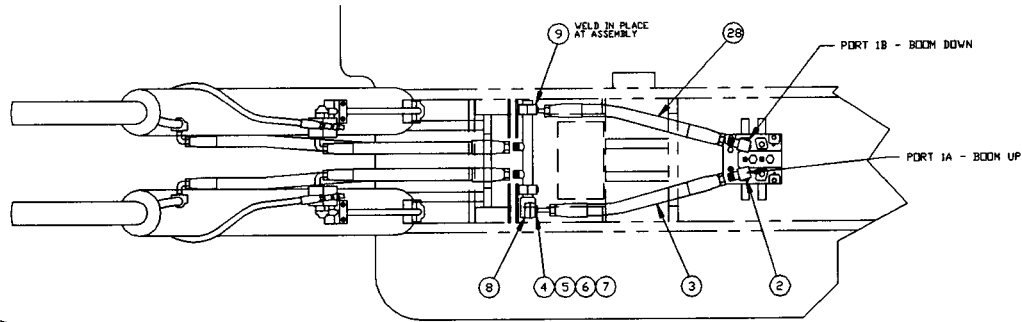
MACHINE	SECTION	23
-----	-----	-----
MODEL 361 SWINGLOADER	BOOM	
-----	-----	-----

ASSEMBLY NUMBER	DESCRIPTION
-----	-----

1805387

BOOM INSTALLATION (MODEL 361-18)

ITEM NO.	PART NUMBER	DESCRIPTION	QTY. USED
002	1802170	BOOM WELDMENT	1.00
003	1802171	ROCKER ARM WELDMENT	1.00
004	1802172	LINK WELDMENT	1.00
005	1805386	BOOM LIFT CYLINDER (FOR MODEL 361-18)	2.00
006	1802174	ATTACHMENT CYLINDER	1.00
007	1802176	BUSHING - 3.50" I.D. X 5" LONG	2.00
008	1802175	BUSHING - 2.50" I.D. X 3" LONG	2.00
009	1802180	BUSHING - 2.01" DIA. X 2.75" LONG	2.00
010	1802177	BUSHING - 2.50" I.D. X 3.75" LONG	2.00
011	1802181	PIN - 2.50" DIA. X 10.88" LONG	1.00
012	1802182	PIN - 2.50" DIA. X 10.38" LONG	1.00
013	1802183	PIN - 2.50" DIA. X 9.88" LONG	1.00
014	1802184	PIN - 2.00" DIA. X 19.38" LONG	1.00
015	1802185	PIN - 2.50" DIA. X 9.50" LONG	1.00
016	1802186	PIN - 2.00" DIA. X 7.38" LONG	2.00
017	1802187	PIN - 2.50" DIA. X 8.75" LONG	2.00
018	1802178	BOOM FOOT PIN - 3.5" DIA. X 24.25" LONG	1.00
019	1802179	LIFT CYL. PIN - 2" DIA. X 6.56" LONG	2.00
020	1801782	H.H.C.S. 3/4-10 X 6" LONG	3.00
021	1802188	H.H.C.S. 1/2-13 X 5" LONG	1.00
022	1802189	H.H.C.S. 1/2-13 X 5 1/2" LONG	2.00
023	1802190	H.H.C.S. 5/8-11 X 5" LONG	2.00
024	1802191	H.H.C.S. 1/2-13 X 5" LONG	2.00
025	1802192	H.H.C.S. 3/4-10 X 6 3/4" LONG	1.00
026	1802193	H.H.C.S. 7/8-9 X 7" LONG	1.00
027	1800522	ESNA HEX NUT 3/4-10	4.00
028	1800516	ESNA HEX NUT 1/2-13	5.00
029	1801363	ESNA HEX NUT 5/8-11	2.00
030	1802194	ESNA NUT 7/8-9	1.00
031	1800663	STRAIGHT 1/8" MALE-PIPE GREASE FITTING	13.00



1 INSTALLATION

<p>TOLERANCES</p> <p>UNLESS OTHERWISE SPECIFIED</p> <p>FRACTIONS +/-</p> <p>3 PLACE DECIMALS +/-</p> <p>2 PLACE DECIMALS +/-</p> <p>1 PLACE DECIMALS +/-</p> <p>ANGLES</p> <p>SEE SWINGMASTER SPECIFICATION</p> <p>Q-1 FOR TOLERANCES NOT SPECIFIED</p> <p>DIMENSIONS ARE IN INCHES</p> <p>DO NOT SCALE DRAWING</p> <p>SCALE:</p>	<p>SWINGMASTER CORPORATION</p> <p>11415 MELROSE AVENUE FRANKLIN PARK, ILLINOIS 00131</p>	
	<p>BOOM LIFT CYLINDER HYDRAULIC</p>	
	<p>LINES AND FITTINGS INSTALLATION</p>	
	<p>MODEL 361</p>	
<p>DRAWN BY: B.W.</p> <p>DATE: 2-9-89</p>	<p>DRAWING NO.</p> <p style="font-size: 2em;">D-233</p>	

MACHINE	SECTION	23
-----	-----	-----
MODEL 361 SWINGLOADER	BOOM	
-----	-----	-----

ASSEMBLY NUMBER	DESCRIPTION
-----	-----
1802310	BOOM LIFT CYLINDER LINES & FITTINGS
-----	-----

ITEM NO.	PART NUMBER	DESCRIPTION	QTY. USED
-----	-----	-----	-----
2	1800802	90 DEG MALE ELBOW 3/4 0-RING TO 1 TUBE	2
3	1802312	HOSE ASSEMBLY 2781-16	1
4	1800819	1" 0-RING FOR SPLIT FLANGE HEAD	2
5	1800824	1" SPLIT FLANGE CLAMP HALF	4
6	1800867	12 POINT F.H.C.S. 3/8-16 X 1 1/4" LONG	20
7	1800568	3/8" LOCK WASHER	44
8	1802316	HYDRAULIC MANIFOLD	2
9	1802317	HOSE CLAMP - 1 1/4"	4
10	1802313	HOSE ASSEMBLY 2781-12	2
11	1802314	HOSE ASSEMBLY 2781-12	2
12	1800210	COUNTERBALANCE VALVE - INCLUDES 2a + 2b	2
12a	8703029	CARTRIDGE - NOT SHOWN IN PICTURE	1
12b	8703030	VALVE BODY - NOT SHOWN IN PICTURE	1
13	1800817	3/4" 0-RING FOR SPLIT FLANGE HEAD	10
14	1800823	3/4" SPLIT FLANGE CLAMP HALF	8
15	1802318	12 POINT F.H.C.S. 3/8-16 X 3 1/2" LONG	4
16	1802319	12 POINT F.H.C.S. 3/8-16 X 4" LONG	4
17	1800970	3/8" 0-RING BOSS PLUG - HEX HEAD	2
18	1800228	HOSE CLAMP - 1"	4
19	1800152	TUBE WELDMENT - ROD END - LEFT SIDE	1
20	1800154	TUBE WELDMENT - ROD END - RIGHT SIDE	1
21	1801667	12 POINT F.H.C.S. 3/8-16 X 1 3/4" LONG	16
22	1800794	90 DEG MALE ELBOW 3/8 0-RING TO 3/8 TUBE	2
23	1802315	HOSE ASSEMBLY - PILOT LINE - 1503-6	2
24	1801814	3/8 MALE TEE - 0-RING-TUBE-TUBE	2
25	1801668	PRESSURE SENSING COUPLING - 3/8 TUBE	2
26	1802320	TUBE WELDMENT - CASE END - RIGHT SIDE	1
27	1802321	TUBE WELDMENT - CASE END - LEFT SIDE	1
28	1802430	HOSE ASSEMBLY 2781-16	1
29	1800876	FD90 DUST CAP	2