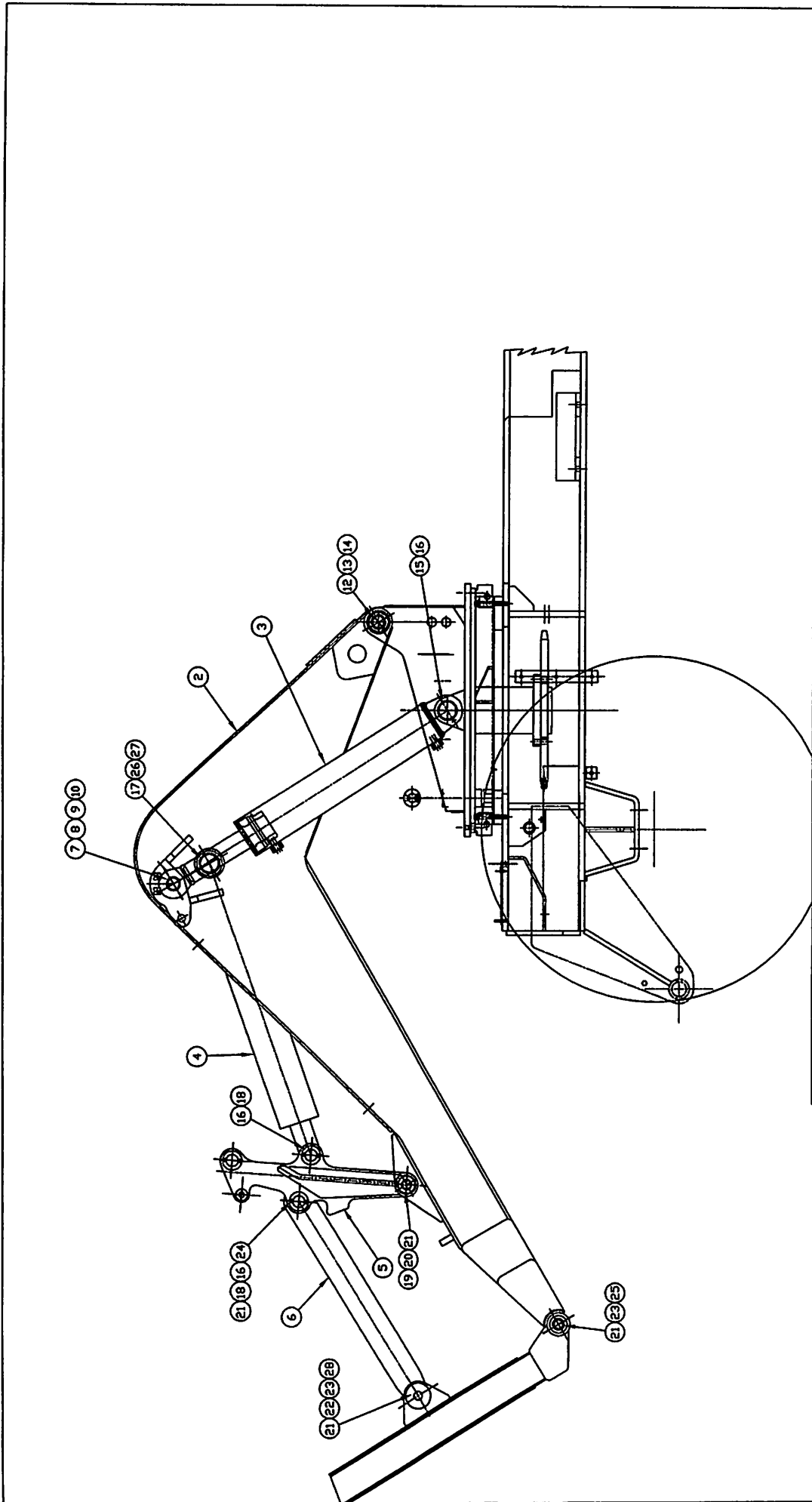




SECTION W

BOOM



TOLERANCES
 UNLESS OTHERWISE SPECIFIED
 FINISHES
 3 PLATE FORMALS $\pm .01$
 1 PLATE FORMALS $\pm .02$
 1 PLATE FORMALS $\pm .03$
 ANGLES
 SEE DIMENSIONAL SPECIFICATION
 G-1 FOR TOLERANCES NOT SPECIFIED
 DIMENSIONS ARE IN INCHES
 UNLESS OTHERWISE SPECIFIED
 SCALE: 1" = 8'

SWINGMASTER CORPORATION
 1415 MELROSE AVE
 FRANKLIN PARK, ILLINOIS 60131
 MAIN BOOM INSTALLATION
 MODEL 1817CSD
 DRAWN BY: J.L.
 DATE: 8-25-08
 DRAWING NO.

1 INSTALLATION

D3-57

MACHINE	SECTION
MODEL SL180-13 SWINGLOADER	BOOM

ASSEMBLY NUMBER	DESCRIPTION
1806824	MAIN BOOM INSTALLATION - 181TCHD

ITEM NO.	PART NUMBER	DESCRIPTION	QTY USED
2	1806825	MAIN BOOM	1
3	1806826	LIFT CYLINDER	2
4	1806827	BUCKET CYLINDER	1
5	1804824	BUCKET LEVER ASSEMBLY	1
6	1804821	BUCKET LINK	1
7	1800122	PIN - BOOM CYLINDER	1
8	1800125	PIN - BOOM CYLINDER	1
9	1800124	LOCK PLATE	2
10	1800459	H.H.C.S. 3/8-16 X 1 3/4" LONG	4
11	1800568	3/8" LOCK WASHER	4
12	1800584	2" DIA X 7 3/8" LG PIN W/ LUB. HOLES	2
13	1800475	H.H.C.S. 1/2-13 X 4" LONG	2
14	1800516	ESNA HEX NUT 1/2-13	2
15	1800596	3" DIA X 5 7/8" LONG PIN	2
16	1804327	COTTER PIN - 1/2" DIA. X 6" LONG	4
17	1800123	PIN - BOOM 3" X 13" LG.	1
18	1804823	PIN - 2.00"DIA.X7.50"LG	2
19	1800590	1 1/2" DIA X 9 3/4" LG PIN W/ LUB. HOLES	1
20	1800582	COTTER PIN 3/8 X 4" LONG	1
21	1800663	STRAIGHT 1/8" MALE-PIPE GREASE FITTING	5
22	1800588	1 1/2" DIA X 8" LONG PIN	1
23	1800581	COTTER PIN 3/8 X 3 1/2" LONG	3
24	1804822	BUSHING	1
25	1801562	1 1/2" DIA. X 8 3/4" LONG PIN	2
26	1802724	H.H.C.S. 1/2-13 X 4 1/2" LONG	1
27	1800516	ESNA HEX NUT 1/2-13	1
28	1801425	BRONZE BUSHING 1 1/2" ID X 2" OD	1

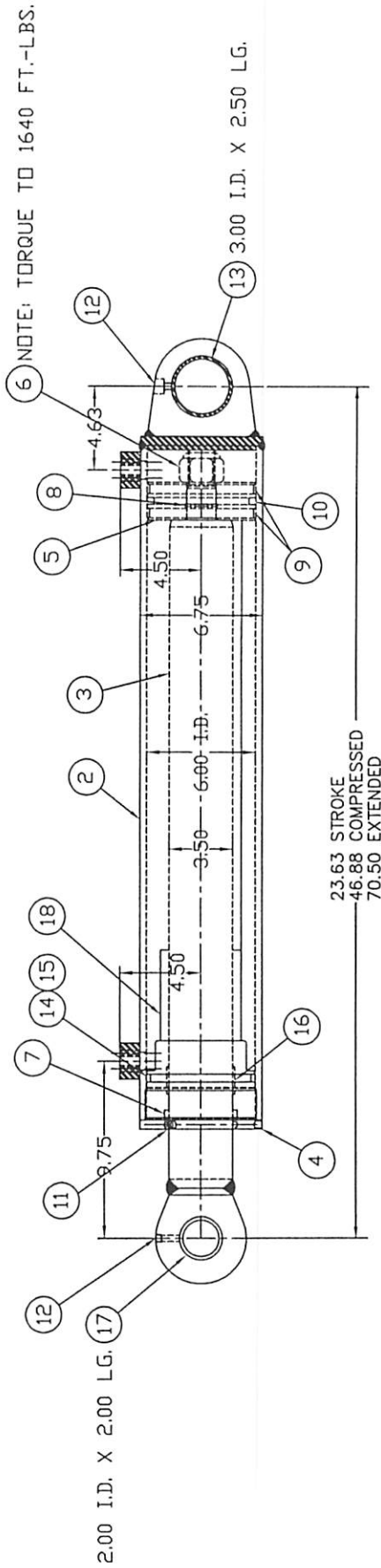
SWINGMASTER CORPORATION

11415 MELROSE AVENUE

FRANKLIN PARK, ILLINOIS 60131

TEL: (847) 451-1224

RATED PRESSURE : 1850 PSI
 OVERLOAD RELIEF PRESSURE: 3000 PSI



1 ASSEMBLY

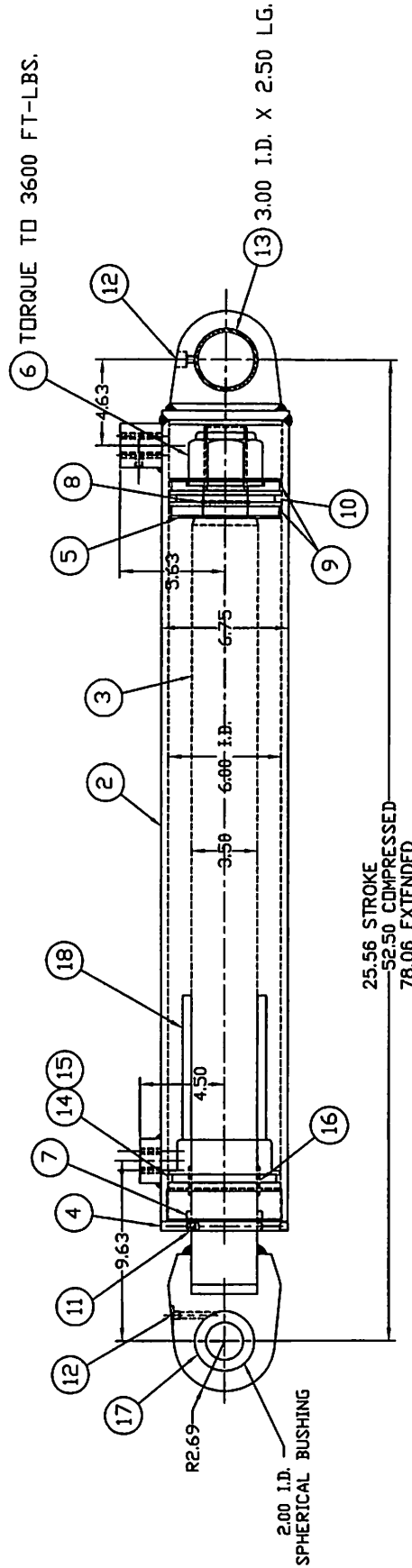
TOLERANCES UNLESS OTHERWISE SPECIFIED FINISHES 3 PLACE DECIMALS +/- 1 PLACE DECIMALS +/- ANGLES SEE SWINGMASTER SPECIFICATION DIMENSIONS ARE IN INCHES UNLESS OTHERWISE SPECIFIED SCALE: 1/4"	SWINGMASTER CORPORATION 11415 MADISON AVENUE FRANKLIN PARK, ILLINOIS 60151 LIFT CYLINDER MODEL 1817CHD DRAWN BY: J.A.K. DATE: 8-21-08 DRAWING NO. D-923
--	--

MACHINE	SECTION	1
<hr/>		
MODEL SL180-13 SWINGLOADER	BOOM	

ASSEMBLY NUMBER	DESCRIPTION
<hr/>	<hr/>
1806826	LIFT CYLINDER

ITEM NO.	PART NUMBER	DESCRIPTION	QTY USED
<hr/>	<hr/>	<hr/>	<hr/>
002	1806888	CASE WELDMENT	1
003	1806889	ROD WELDMENT	1
004	1806627	CAP	1
005	1806628	PISTON	1
006	1806630	ESNA NUT 1 1/2-12	1
007	1806444	ROD SEAL	1
008	1806623	"O" RING	1
009	1806446	WEAR RING	2
010	1806447	PISTON SEAL	1
011	1806448	WIPER	1
012	1800663	STRAIGHT 1/8" MALE-PIPE GREASE FITTING	2
013	8700601	BUSHING - 3" I.D. X 2-1/2" LG.	1
014	1806450	O-RING	1
015	1806451	BACKUP RING	1
016	1806452	WEAR RING	3
017	8700602	BUSHING - 2" I.D. X 2" LG.	1
018	1806890	SPACER	1

RATED PRESSURE: 1850 PSI
 OVERLOAD RELIEF PRESSURE: 3000 PSI



25.56 STROKE
 52.50 COMPRESSED
 78.06 EXTENDED

1 ASSEMBLY

TOLERANCES UNLESS OTHERWISE SPECIFIED FINISHES 1-1/2 PLACE DECIMALS +/- 2-1/2 PLACE DECIMALS +/- 3-1/2 PLACE DECIMALS +/- 4-1/2 PLACE DECIMALS +/- 5-1/2 PLACE DECIMALS +/- 6-1/2 PLACE DECIMALS +/- 7-1/2 PLACE DECIMALS +/- 8-1/2 PLACE DECIMALS +/- 9-1/2 PLACE DECIMALS +/- 10-1/2 PLACE DECIMALS +/- 11-1/2 PLACE DECIMALS +/- 12-1/2 PLACE DECIMALS +/- 13-1/2 PLACE DECIMALS +/- 14-1/2 PLACE DECIMALS +/- 15-1/2 PLACE DECIMALS +/- 16-1/2 PLACE DECIMALS +/- 17-1/2 PLACE DECIMALS +/- 18-1/2 PLACE DECIMALS +/- DIMENSIONS ARE IN INCHES DO NOT SCALE DRAWING SCALE: 1/4"	SWINGMASTER CORPORATION THIS DRAWING ABOVE IS THE PROPERTY OF SWINGMASTER CORPORATION ATTACHMENT CYLINDER MODEL 1817CND DRAWN BY: J.K. DATE: 8-21-08 DRAWING NO. D-924
--	--

MACHINE	SECTION	1
MODEL SL180-13 SWINGLOADER	BOOM	

ASSEMBLY NUMBER	DESCRIPTION
1806827	BUCKET CYLINDER

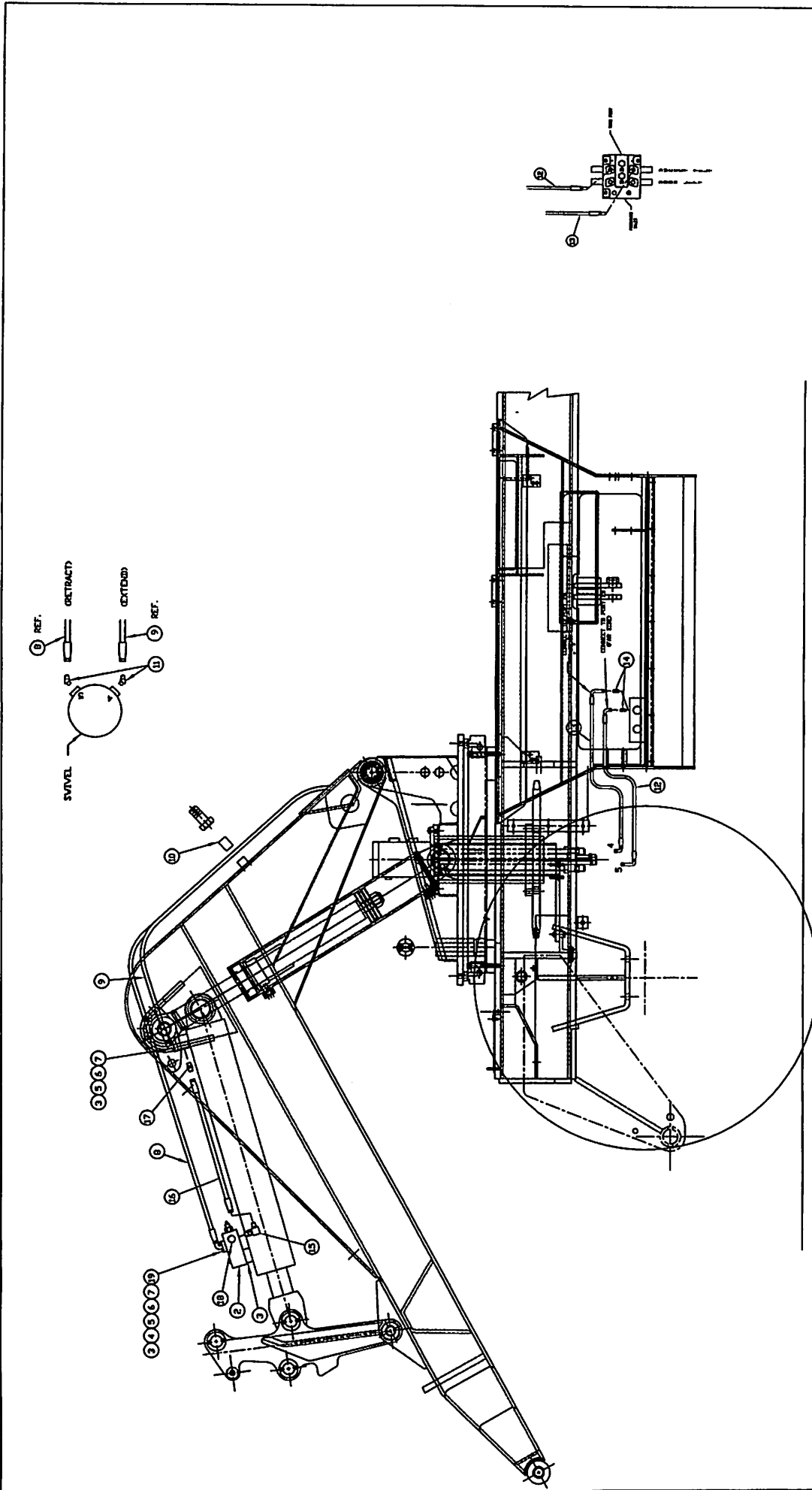
ITEM NO.	PART NUMBER	DESCRIPTION	QTY USED
002	1806891	CASE WELDMENT	1
003	1806892	ROD WELDMENT	1
004	1806627	CAP	1
005	1806634	PISTON	1
006	1801984	ESNA HEX NUT 2 1/4 - 4 1/2	1
007	1806444	ROD SEAL	1
008	1806445	O-RING	1
009	1806446	WEAR RING	2
010	1806447	PISTON SEAL	1
011	1806448	WIPER	1
012	1800663	STRAIGHT 1/8" MALE-PIPE GREASE FITTING	2
013	8700601	BUSHING - 3" I.D. X 2-1/2" LG.	1
014	1806450	O-RING	1
015	1806451	BACKUP RING	1
016	1806452	WEAR RING	3
017	1806449	SPHERICAL BUSHING	1
18	1806893	SPACER	1

SWINGMASTER CORPORATION

11415 MELROSE AVENUE

FRANKLIN PARK, ILLINOIS 60131

TEL: (847) 451-1224



TELEPHONES 1-800-368-5272 3 PLACE EXTERNALS 2/2 1 PLACE EXTERNALS 2/2 1 PLACE EXTERNALS 2/2 1 PLACE EXTERNALS 2/2 1 PLACE EXTERNALS 2/2		SWINGMASTER CORPORATION 11415 MADISON AVENUE FRANKLIN PARK, ILLINOIS 60141
SEE DIMENSIONS SPECIFICATION DIMENSIONS ARE IN INCHES UNLESS OTHERWISE SPECIFIED G-1 FOR TOLERANCES NOT SPECIFIED SCALE: 1/4" = 1'-0"		BUCKET (ATTACHMENT) TILT CYLINDER
LINE AND FITTINGS MODEL T811CHD		DRAWN BY: J.C. DATE: 1-13-09
1 INSTALLATION		D1-72

MACHINE	SECTION	1
MODEL SL180-13 SWINGLOADER	BOOM	

ASSEMBLY NUMBER	DESCRIPTION
1806894	BUCKET(ATT) CYL. LINES & FITTINGS

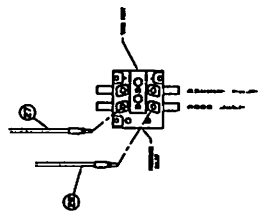
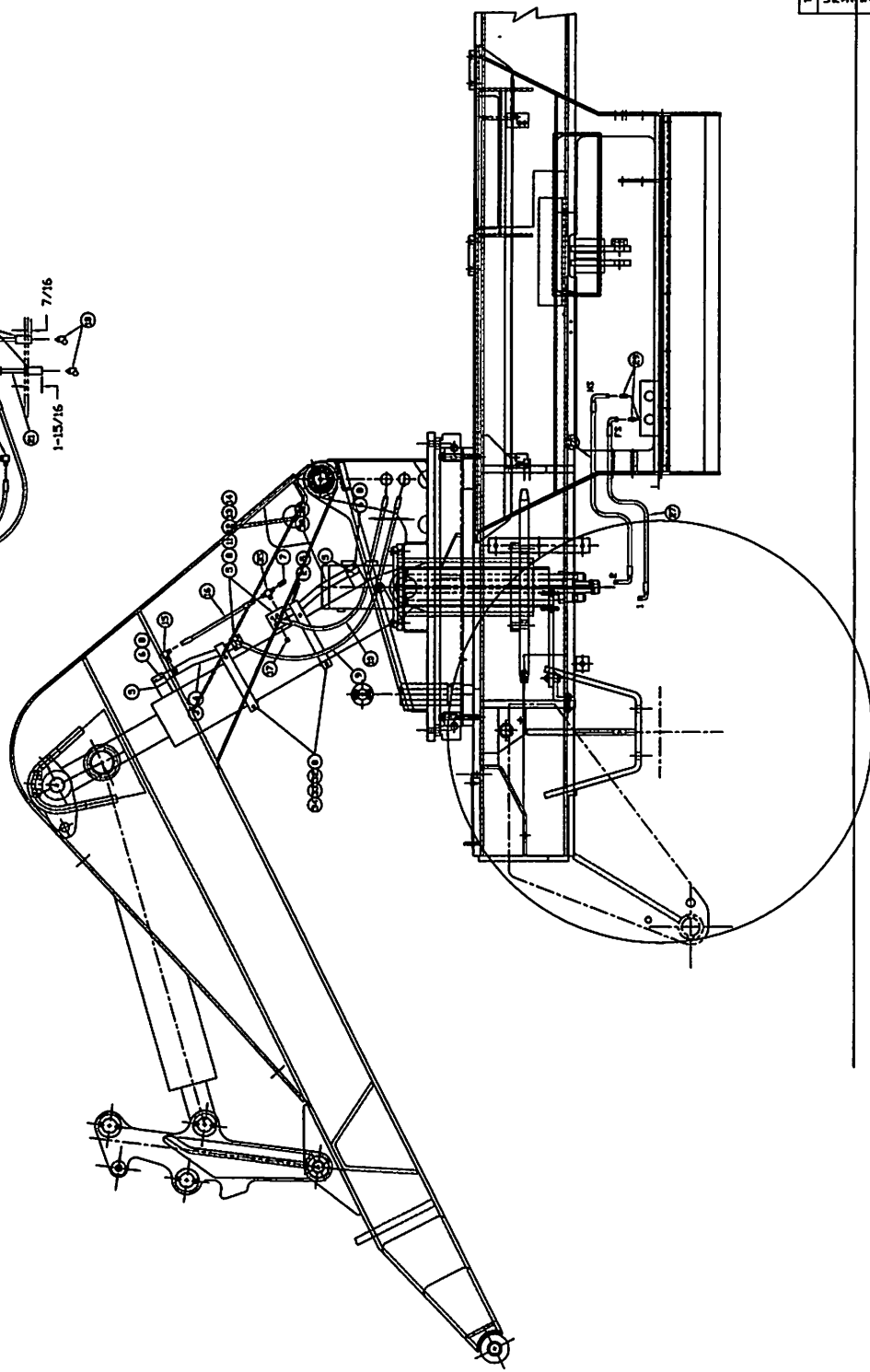
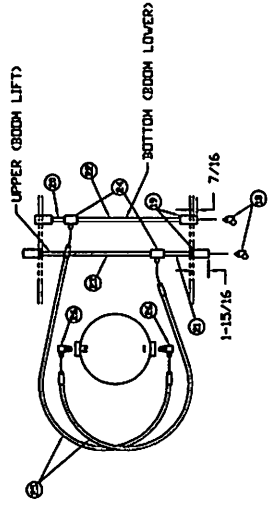
ITEM NO.	PART NUMBER	DESCRIPTION	QTY USED
2	1800209	COUNTERBALANCE VALVE	1
3	1800819	1" O-RING FOR SPLIT FLANGE HEAD	3
4	1800465	H.H.C.S. 3/8-16 X 4 1/2" LONG	2
5	1800454	H.H.C.S. 3/8-16 X 1 1/4" LONG	6
6	1800568	3/8" LOCK WASHER	10
7	1800824	1" SPLIT FLANGE CLAMP HALF	4
8	1801320	HOSE ASSEMBLY 2781-16 BUCKET RETRACT	1
9	1801321	HOSE ASSEMBLY 2781-16 BUCKET EXTEND	1
10	1800226	HOSE CLAMP	2
11	1801035	45 DEG MALE ELBOW 1 TUBE TO 3/4 O-RING	2
12	1801816	HOSE ASSEMBLY - 2781-16	1
13	1801815	HOSE ASSEMBLY - 2781-16	1
14	1800770	STRAIGHT MALE 3/4 O-RING TO 3/4 TUBE	2
15	1800794	90 DEG MALE ELBOW 3/8 O-RING TO 3/8 TUBE	1
16	1801324	HOSE ASSEMBLY 1503-6 PILOT LINE	1
17	1800762	STRAIGHT MALE 3/8 O-RING TO 3/8 TUBE	1
18	1800970	3/8" O-RING BOSS PLUG-HEX HEAD	1
19	1800464	H.H.C.S. 3/8-16 X 4" LONG	2

SWINGMASTER CORPORATION

11415 MELROSE AVENUE

FRANKLIN PARK, ILLINOIS 60131

TEL: (847) 451-1224



<p>TOLERANCES</p> <p>UNLESS OTHERWISE SPECIFIED</p> <p>3 PLACE DECIMALS ±.005</p> <p>2 PLACE DECIMALS ±.010</p> <p>1 PLACE DECIMALS ±.030</p> <p>ANGLES</p>	<p>SWINGMASTER CORPORATION</p> <p>1415 MILWAUKEE AVENUE</p> <p>FRANKLIN PARK, ILLINOIS 60151</p>
	<p>BOOM LIFT CYLINDER</p>
	<p>MODEL 1811CHD</p>
	<p>DATE: 1-13-74</p>
<p>SEE SWINGMASTER SPECIFICATION C-1 FOR TOLERANCES NOT SPECIFIED</p> <p>DIMENSIONS ARE IN INCHES</p> <p>SCALE: 1/4" = 1'-0"</p>	<p>DRAWING NO. D1-74</p>

① INSTALLATION

MACHINE	SECTION	1
MODEL SL180-13 SWINGLOADER	BOOM	

ASSEMBLY NUMBER	DESCRIPTION
1806895	BOOM LIFT CYL. LINES & FITTINGS

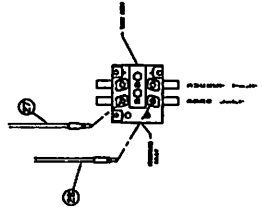
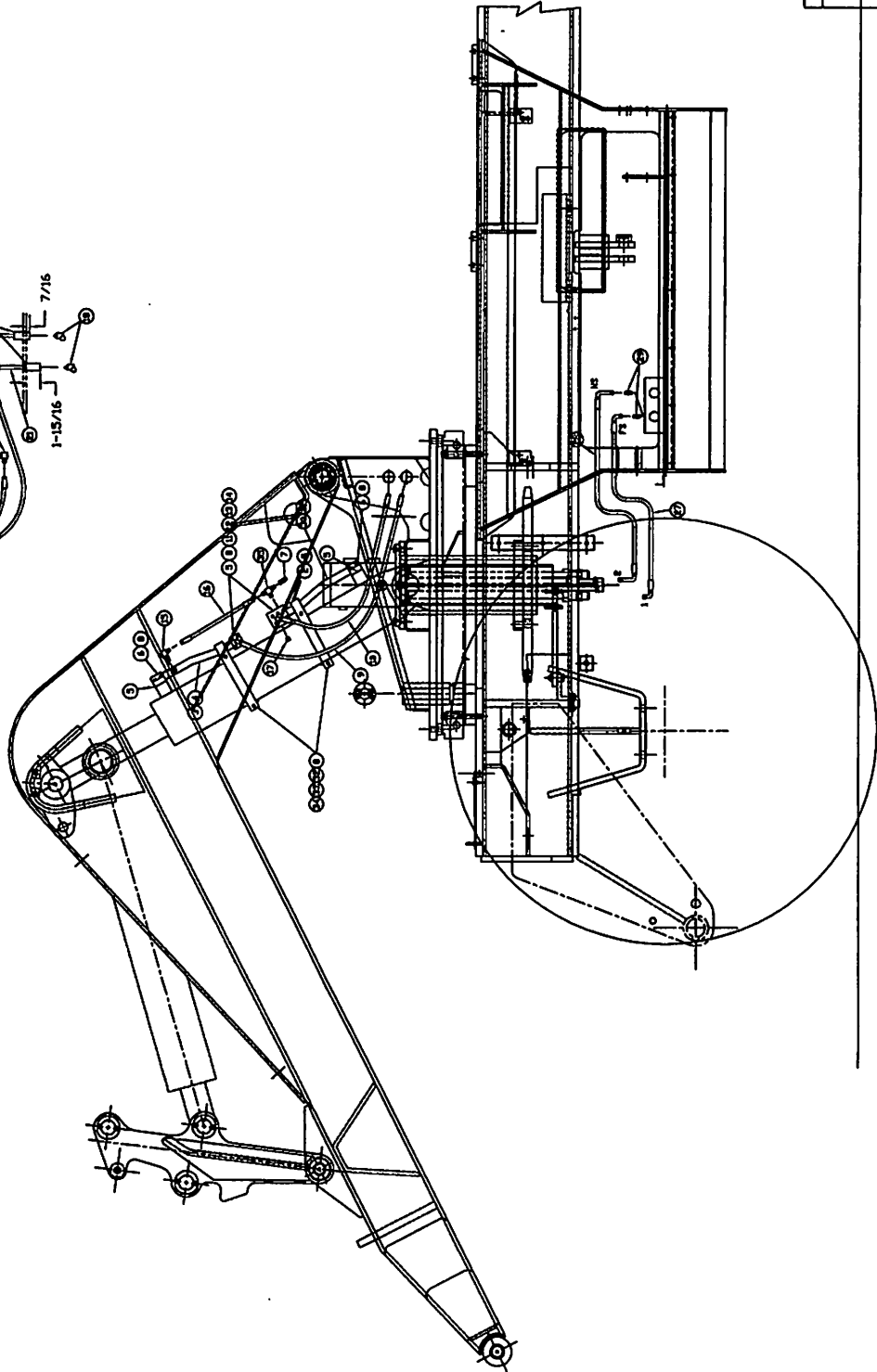
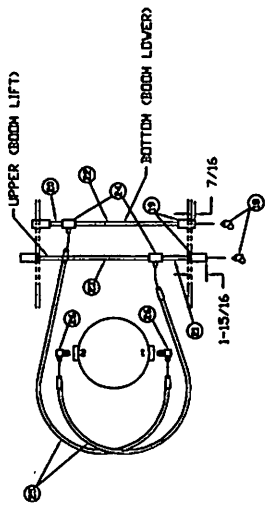
ITEM NO.	PART NUMBER	DESCRIPTION	QTY USED
2	1800210	COUNTERBALANCE VALVE	2
3	1800152	TUBE WELDMENT - ROD END - LEFT SIDE	1
4	1800154	TUBE WELDMENT - ROD END - RIGHT SIDE	1
5	1800817	3/4" O-RING FOR SPLIT FLANGE HEAD	10
6	1801667	12 POINT F.H.C.S. 3/8-16 X 1 3/4" LONG	16
7	1801668	3/8" MALE QUICK DISCONNECT	2
8	1800568	3/8" LOCK WASHER	28
9	1801325	HOSE ASSEMBLY 2781-12 BOOM LOWER	2
10	1801326	HOSE ASSEMBLY 2781-12 BOOM LIFT	2
11	1800823	3/4" SPLIT FLANGE CLAMP HALF	8
12	1800454	H.H.C.S. 3/8-16 X 1 1/4" LONG	12
13	1800463	H.H.C.S. 3/8-16 X 3 1/2" LONG	4
14	1800464	H.H.C.S. 3/8-16 X 4" LONG	4
15	1800794	90 DEG MALE ELBOW 3/8 O-RING TO 3/8 TUBE	4
16	1802251	HOSE ASSEMBLY 1503-6	2
17	1800970	3/8" O-RING BOSS PLUG-HEX HEAD	2
18	1800850	45 DEG MALE ELBOW 3/4 TUBE TO 3/4 PIPE	4
19	1800297	STEEL COUPLING - 3/4" x 2-1/8" LG.	4
20	1800877	3/4" PIPE NIPPLE X 4 3/4 LONG	1
21	1800878	3/4" PIPE NIPPLE X 6 1/4 LONG	1
22	1800879	3/4" PIPE NIPPLE X 13 LONG	1
23	1800880	3/4" PIPE NIPPLE X 14 1/2 LONG	1
24	1801424	TEE 3/4-F PIPE 3/4-F PIPE 3/4-M TUBE	2
25	1801328	HOSE ASSEMBLY 2781-12	2
26	1800801	90 DEG MALE ELBOW 3/4 O-RING TO 3/4 TUBE	2
27	1801669	HOSE ASSEMBLY 2781-12	1
28	1801670	HOSE ASSEMBLY 2781-12	1
29	1800770	STRAIGHT MALE 3/4 O-RING TO 3/4 TUBE	2
30	1800134	LIFT CYLINDER CASE SIDE PORT TUBE	1
31	1800136	LIFT CYLINDER CASE SIDE PORT TUBE	1

SWINGMASTER CORPORATION

11415 MELROSE AVENUE

FRANKLIN PARK, ILLINOIS 60131

TEL: (847) 451-1224



SWINGMASTER CORPORATION	
1415 MADISON AVENUE FRANCONIA PARK, LINDEN, N.J.	
BOOM LIFT CYLINDER	
LINES AND FITTINGS	
MODEL 16T1CH	
DESIGN BY: J.L.	DRAWING NO. D1-74
DATE: 1-15-69	DRAWING NO.

TOLERANCES

UNLESS OTHERWISE SPECIFIED

FRACTIONS 1/16

3 PLACE DECIMALS 1/32

1 PLACE DECIMALS 1/16

ANGLES

SEE SWINGMASTER SPECIFICATION

0-1 FOR TOLERANCES NOT SPECIFIED

DIMENSIONS ARE IN INCHES

UNLESS OTHERWISE SPECIFIED

SCALE: 1/4"

1 INSTALLATION

MACHINE	SECTION	1
MODEL SL180-13 SWINGLOADER	BOOM	

ASSEMBLY NUMBER	DESCRIPTION
1806895	BOOM LIFT CYL. LINES & FITTINGS

ITEM NO.	PART NUMBER	DESCRIPTION	QTY USED
32	1801113	6 3/4" TUBE CLAMP	8
33	1800457	H.H.C.S. 3/8-16 X 1 1/2" LONG	8
34	1800514	HEX NUT 3/8-16	8
35	1801814	3/8 MALE TEE - O-RING-TUBE-TUBE	2