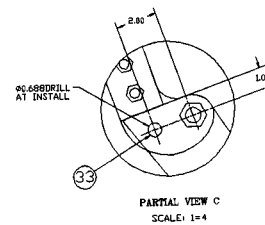
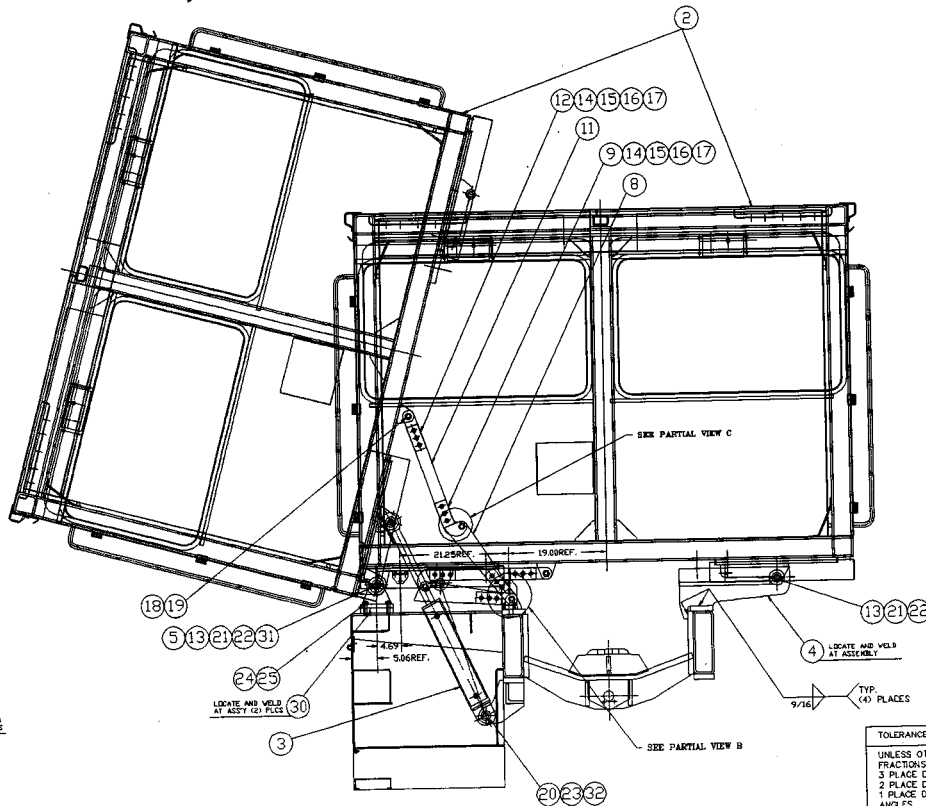
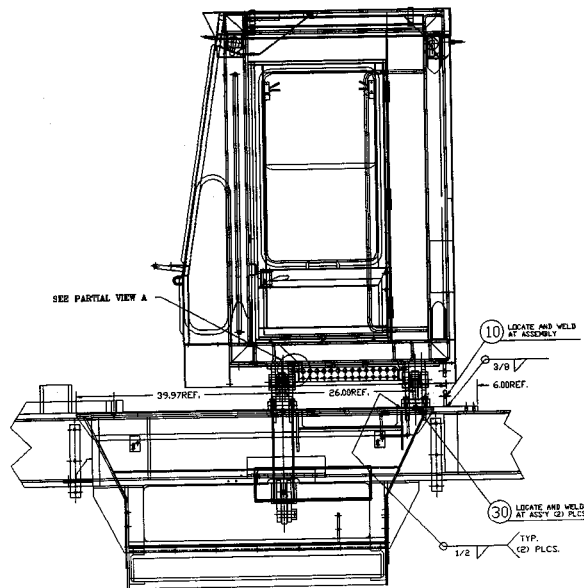
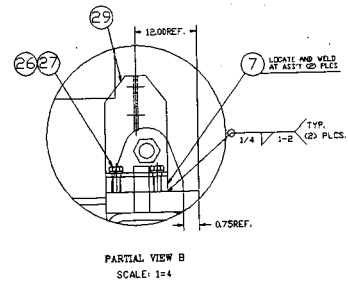
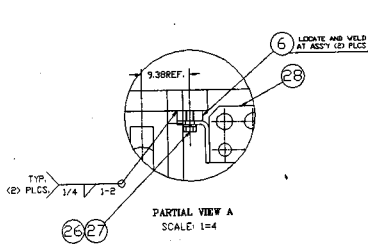
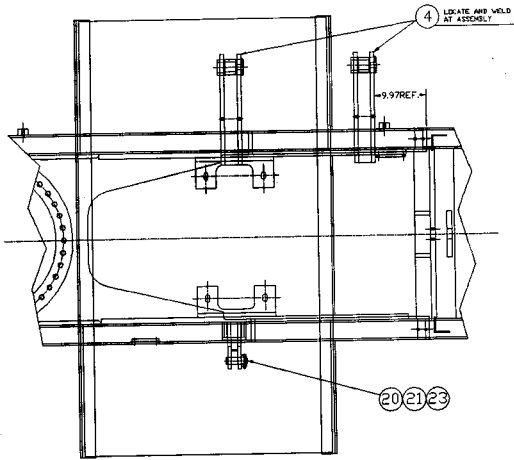


SECTION S

CAB



① ASSEMBLY

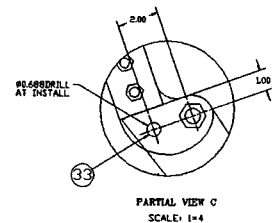
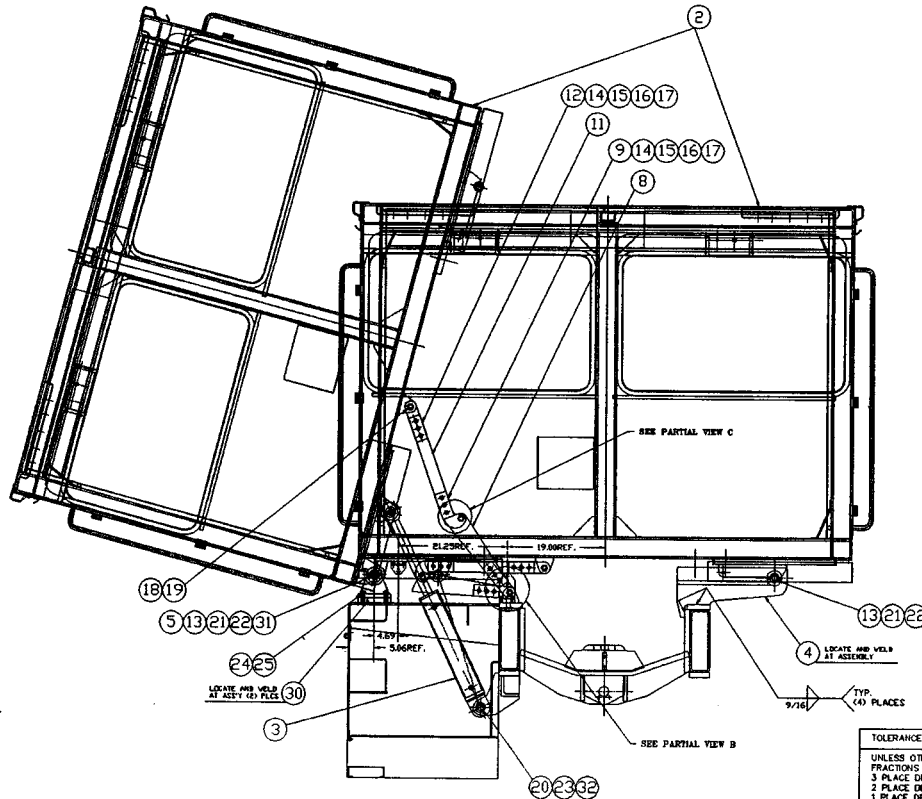
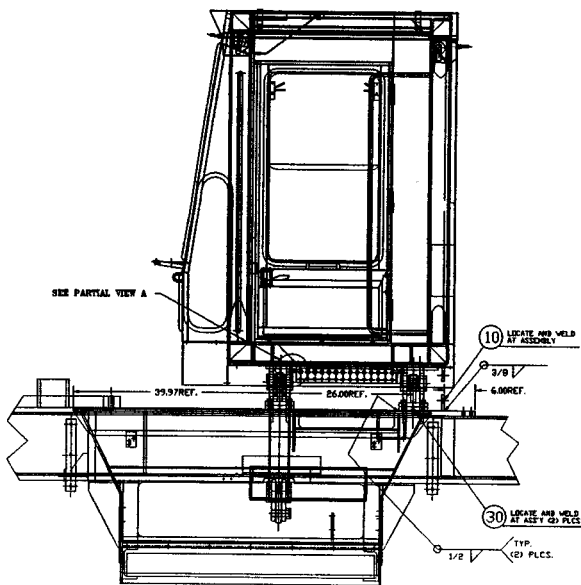
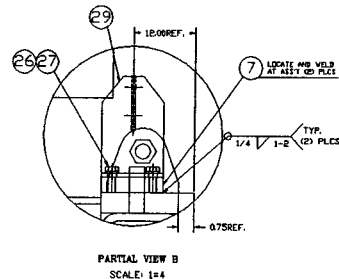
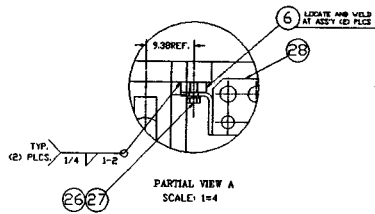
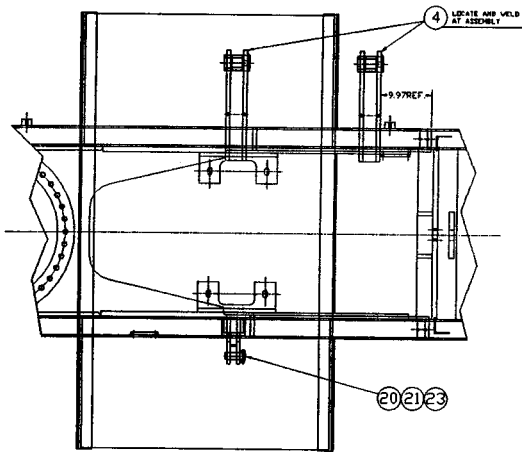
TOLERANCES  
 UNLESS OTHERWISE SPECIFIED  
 FRACTIONS +/-  
 3 PLACE DECIMALS +/-  
 2 PLACE DECIMALS +/-  
 1 PLACE DECIMALS +/-  
 ANGLES  
 SEE SWINGMASTER SPECIFICATION  
 G-1 FOR TOLERANCES NOT SPECIFIED  
 DIMENSIONS ARE IN INCHES  
 DO NOT SCALE DRAWING  
 SCALE 1/12

SWINGMASTER CORPORATION  
 11415 MELROSE AVENUE  
 FRANKLIN PARK, ILLINOIS 60131  
 TILT CAB ASSEMBLY  
 MODEL SL180-15  
 DRAWN BY: R.W.W.  
 DATE: 8-11-98  
 DRAWING NO. D-797

MACHINE	SECTION	19
-----	-----	-----
MODEL SL180 SWINGLOADER	CAB	
-----	-----	-----

ASSEMBLY NUMBER	DESCRIPTION
-----	-----
1805829	TILT CAB ASSEMBLY
-----	-----

ITEM NO.	PART NUMBER	DESCRIPTION	QTY. USED
-----	-----	-----	-----
002	1806004	CAB ASSEMBLY MODEL SL180	1.00
003	1805831	CYLINDER ASSEMBLY	1.00
004	1805832	CAB MTG. BRKT. WLDM'T - ON FRAME	2.00
005	1805833	CAB MTG. BRKT. WLDM'T - ON FENDER	2.00
006	1805834	THREADED BLOCK - 0.50" THK	2.00
007	1805835	THREADED BLOCK - 0.75" THK	2.00
008	1805836	MAIN - LOWER	1.00
009	1805837	CONNECT - RIGHT	2.00
010	1805838	LUG	1.00
011	1805839	MAIN - UPPER	1.00
012	1805840	CONNECT - LEFT	4.00
013	1805841	CAB MOUNTING PIN	4.00
014	1801629	H.H.C.S. 1/2-13 X 2 1/4" LONG	9.00
015	1800554	1/2" FLAT WASHER	18.00
016	1800570	1/2" LOCK WASHER	9.00
017	1800517	HEX NUT 1/2-13	9.00
018	1802053	H.H.C.S. 3/4-10 X 2 1/2" LONG	3.00
019	1800522	ESNA HEX NUT 3/4-10	3.00
020	1801587	H.H.C.S. 3/8-16 X 2 1/2" LONG	2.00
021	1801178	ESNA HEX NUT 1/4-20	4.00
022	1805842	H.H.C.S. 1/4-20 x 3.50" LG.	4.00
023	1805843	PIN 1.25" O.D. x 4.00" LG.	2.00
024	1802058	H.H.C.S. 5/8-11 X 1 1/2" LONG	8.00
025	1800022	5/8" LOCK WASHER	8.00
026	1800451	H.H.C.S. 3/8-16 X 3/4" LONG	8.00
027	1800568	3/8" LOCK WASHER	8.00
028	1805844	HOLES MTG. BRKT. WLDM'T - TOP C-362-1	1.00
029	1805845	HOLES MTG. BRKT. WLDM'T - BOTTOM	1.00
030	1805846	THREADED PLATE - 1.00" THK	2.00
031	1805847	SPRING STEEL BUSHING	2.00
032	1800515	ESNA HEX NUT 3/8-16	2.00



① ASSEMBLY

TOLERANCES  
 UNLESS OTHERWISE SPECIFIED  
 FRACTIONS +/-  
 3 PLACE DECIMALS +/-  
 2 PLACE DECIMALS +/-  
 1 PLACE DECIMALS +/-  
 ANGLES  
 SEE SWINGMASTER SPECIFICATION  
 G-1 FOR TOLERANCES NOT SPECIFIED  
 DIMENSIONS ARE IN INCHES  
 DO NOT SCALE DRAWING  
 SCALE: 1/12

SWINGMASTER CORPORATION  
 11415 MELROSE AVENUE  
 FRANKLIN PARK, ILLINOIS 60131  
 TILT CAB ASSEMBLY  
 MODEL SL180-15  
 DRAWN BY: R.W.V. DRAWING NO.  
 DATE: 6-11-98 D-797

SWINGMASTER CORPORATION

PARTS BOOK

MACHINE

SECTION

19

MODEL SL180 SWINGLOADER

CAB

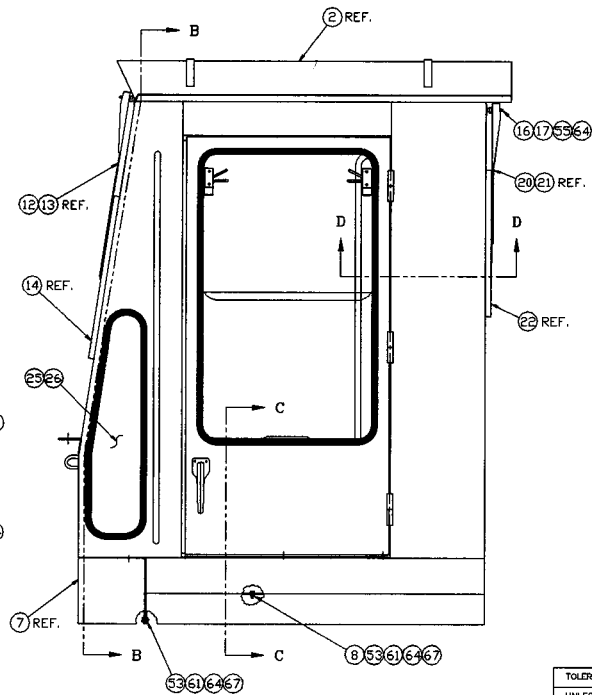
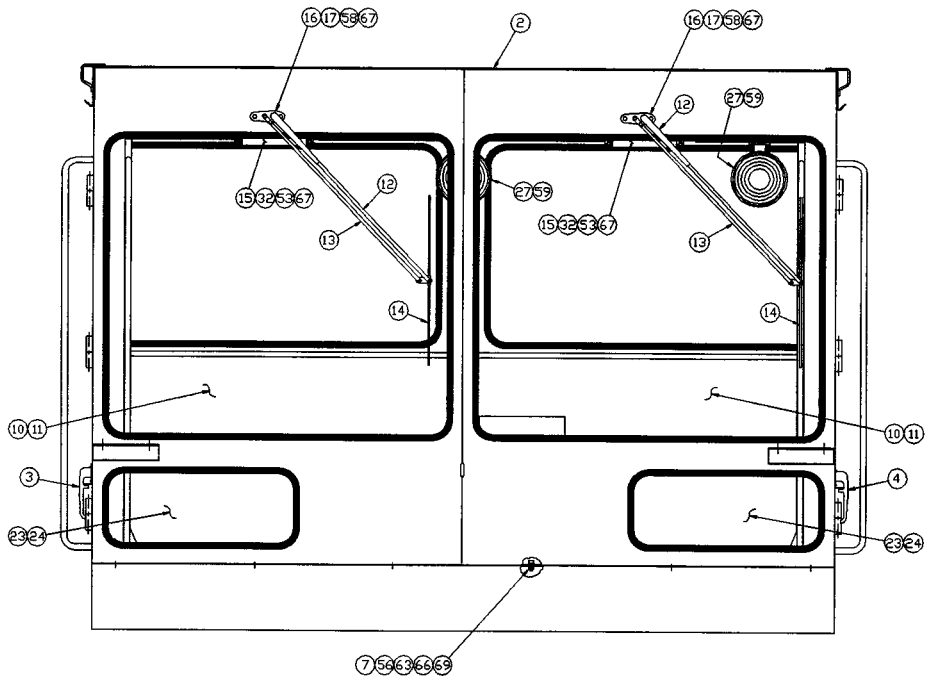
ASSEMBLY  
NUMBER

DESCRIPTION

1805829

TILT CAB ASSEMBLY

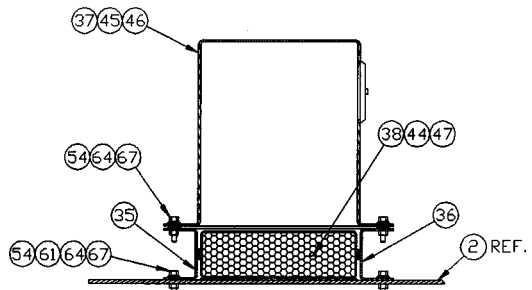
ITEM NO.	PART NUMBER	DESCRIPTION	QTY. USED
033	1806052	RING GRIP SELF-LOCKING PIN	1.00
034	1805968	CAB CYLINDER COLLAR ASSEMBLY	1.00



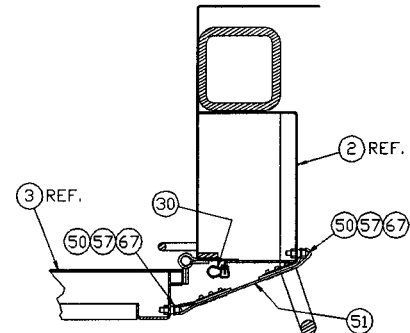
① ASSEMBLY

TOLERANCES  
 UNLESS OTHERWISE SPECIFIED  
 FRACTIONS +/-  
 3 PLACE DECIMALS +/-  
 2 PLACE DECIMALS +/-  
 1 PLACE DECIMALS +/-  
 ANGLES  
 SEE SWINGMASTER SPECIFICATION  
 C-1 FOR TOLERANCES NOT SPECIFIED  
 DIMENSIONS ARE IN INCHES  
 DO NOT SCALE DRAWING  
 SCALE: 1/8"

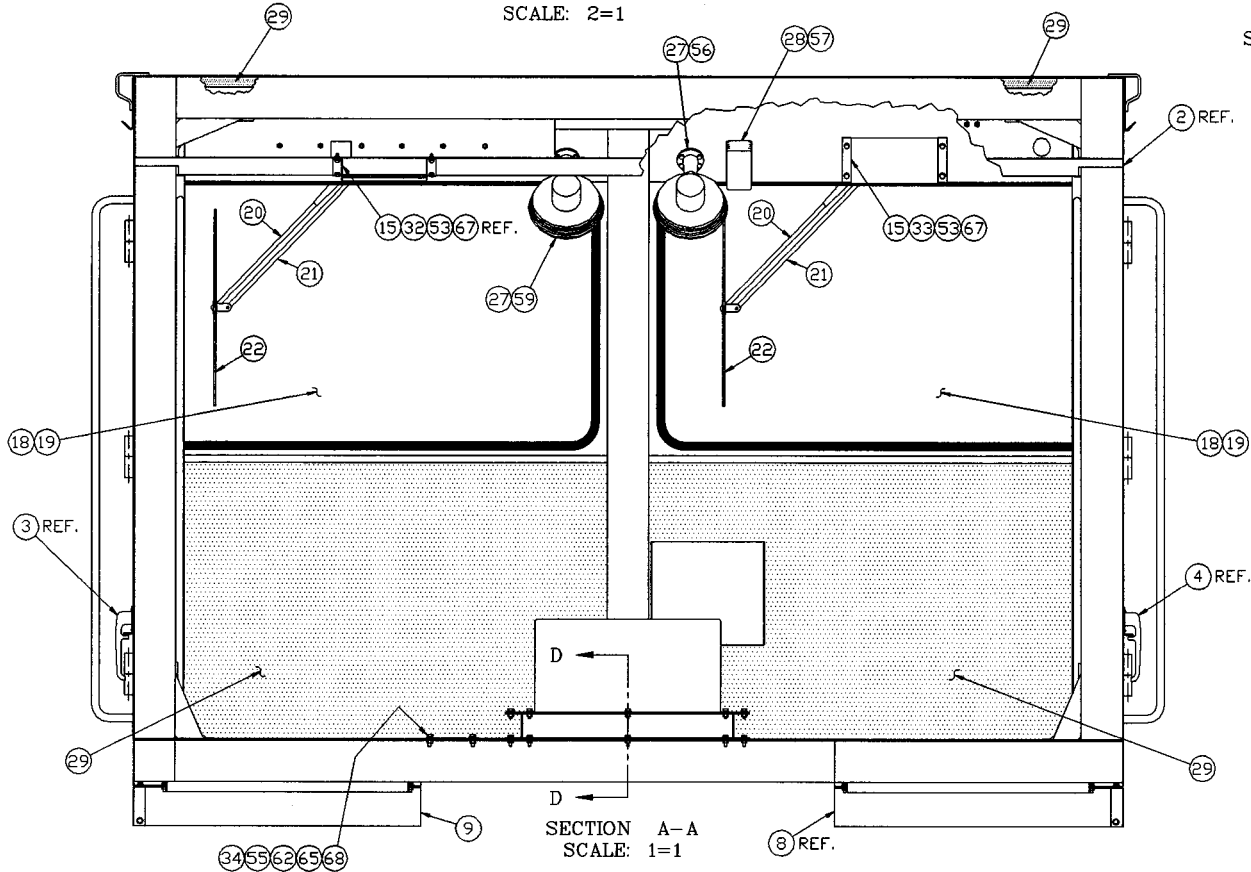
<b>SWINGMASTER CORPORATION</b>	
11415 MELROSE AVENUE FRANKLIN PARK, ILLINOIS 60131	
<b>CAB ASSEMBLY</b>	
MODEL SL180 TILT CAB	
DRAWN BY: J.K.	DRAWING NO. SHEET 1 OF 2
DATE: 1-25-99	D-837



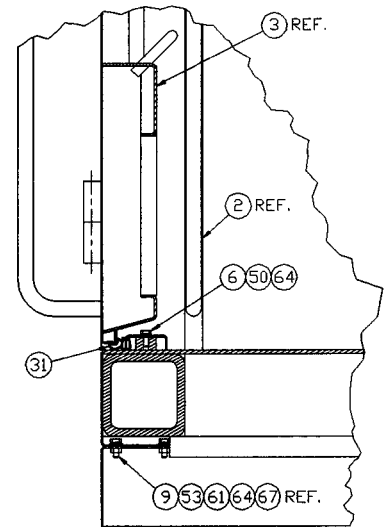
SECTION D-D  
SCALE: 2=1



SECTION C-C  
SCALE: 2=1



SECTION A-A  
SCALE: 1=1



SECTION B-B  
SCALE: 2=1

<p>TOLERANCES</p> <p>UNLESS OTHERWISE SPECIFIED</p> <p>FRACTIONS +/-</p> <p>3 PLACE DECIMALS +/-</p> <p>2 PLACE DECIMALS +/-</p> <p>1 PLACE DECIMALS +/-</p> <p>ANGLES</p> <p>SEE SWINGMASTER SPECIFICATION</p> <p>G-1 FOR TOLERANCES NOT SPECIFIED</p> <p>DIMENSIONS ARE IN INCHES</p> <p>DO NOT SCALE DRAWING</p> <p>SCALE: 1/6</p>	<p>SWINGMASTER CORPORATION</p> <p>11415 MELROSE AVENUE</p> <p>FRANKLIN PARK, ILLINOIS 60131</p>	
	<p>CAB ASSEMBLY</p> <p>MODEL SL180 TILT CAB</p>	
	<p>DRAWN BY: J.K.</p> <p>DATE: 1-25-99</p>	<p>DRAWING NO.</p> <p>SHEET 2 OF 2</p>
	<p>D-837</p>	

MACHINE	SECTION	19
MODEL SL180 SWINGLOADER	CAB	

## ASSEMBLY

NUMBER

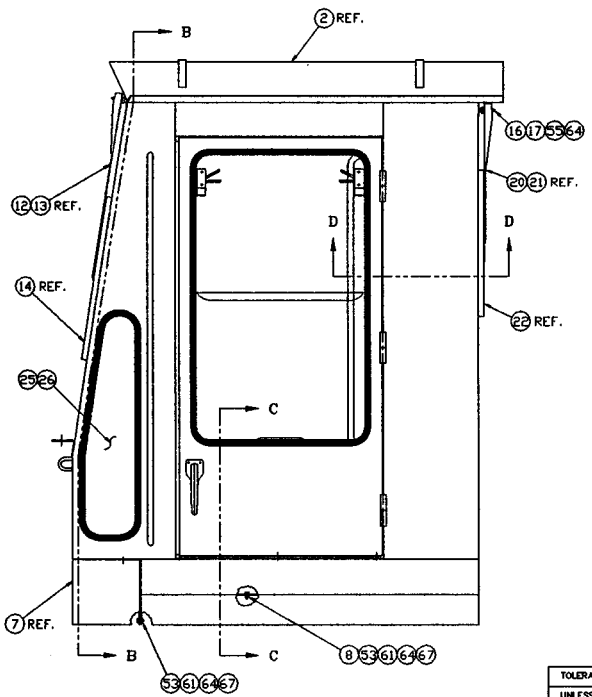
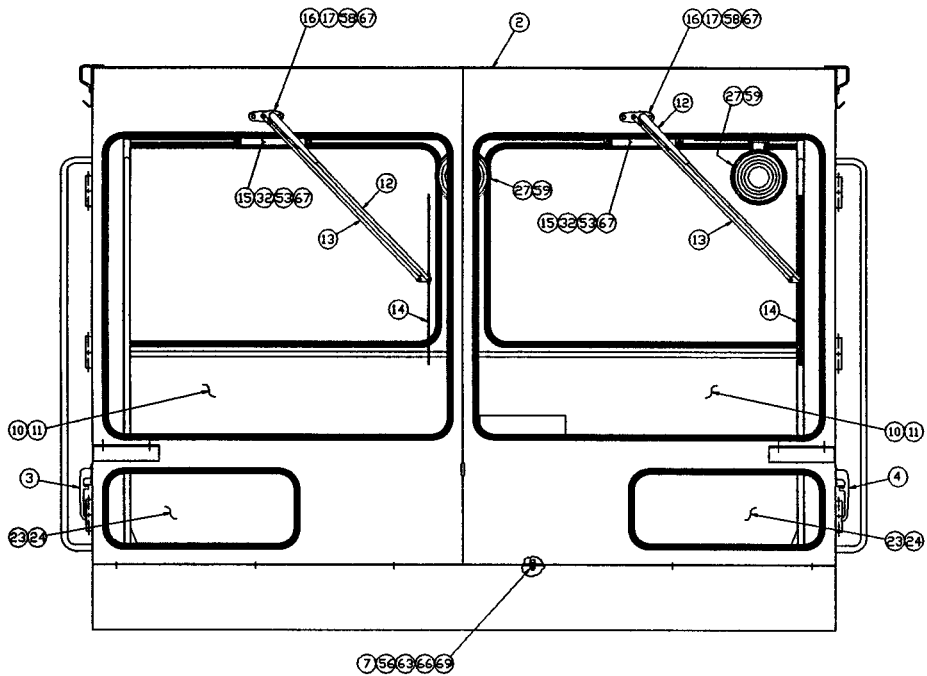
DESCRIPTION

1806004

CAB ASSEMBLY MODEL SL180

ITEM NO.	PART NUMBER	DESCRIPTION	QTY. USED
002	1805830	CAB WELDMENT	1.00
003	1806005	RIGHTHAND DOOR ASSEMBLY	1.00
004	1806006	LEFTHAND DOOR ASSEMBLY	1.00
005	1806007	LOWER DOOR SEAL BRACKET - LEFT	1.00
006	1806008	LOWER DOOR SEAL BRACKET - RIGHT	1.00
007	1806009	FRONT SKIRT	1.00
008	1806010	SKIRT - LEFTHAND SIDE	1.00
009	1806011	SKIRT - RIGHTHAND SIDE	1.00
010	1806012	FRONT WINDSHIELD	2.00
011	1806013	WINDOW WEATHER STRIP	2.00
012	1806014	FRONT WINDSHIELD PANTOGRAPH WIPER ARM	2.00
013	1806015	FRONT WINDSHIELD WIPER ARM	2.00
014	1806016	FRONT WINDSHIELD WIPER BLADE	2.00
015	1806017	WINDSHIELD WIPER MOTOR	4.00
016	1806018	WINDSHIELD WIPER PANTOGRAPH POST ADAPTER	4.00
017	1806019	WINDSHIELD WIPER PIVOT SHAFT	4.00
018	1806020	REAR WINDSHIELD	2.00
019	1806013	WINDOW WEATHER STRIP	2.00
020	1806021	REAR WINDSHIELD PANTOGRAPH WIPER ARM	2.00
021	1806022	REAR WINDSHIELD WIPER ARM	2.00
022	1806023	REAR WINDSHIELD WIPER BLADE	2.00
023	1806024	LOWER FRONT WINDOW	2.00
024	1806013	WINDOW WEATHER STRIP	2.00
025	1806025	SIDE WINDOW	2.00
026	1806013	WINDOW WEATHER STRIP	2.00
027	8700828	DEFROSTER FAN	4.00
028	1806026	DOMELIGHT	1.00
029	1806027	FOAM INSULATION	
030	1805990	DOOR SEAL	2.00
031	1805990	DOOR SEAL	2.00
032	1806028	FRONT MOTOR COVER	2.00

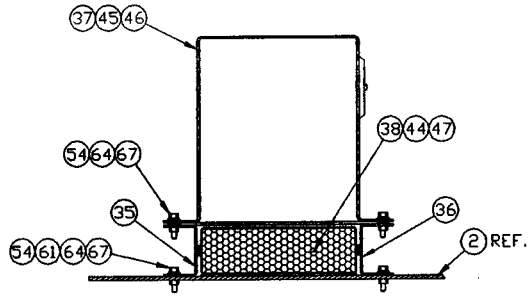




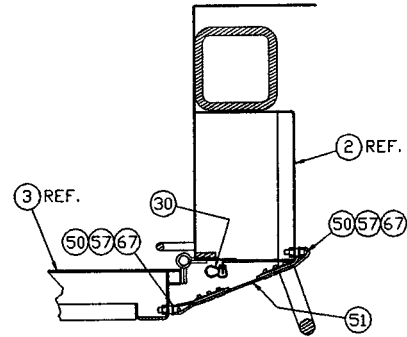
① ASSEMBLY

TOLERANCES  
 UNLESS OTHERWISE SPECIFIED  
 FRACTIONS +/-  
 3 PLACE DECIMALS +/-  
 2 PLACE DECIMALS +/-  
 1 PLACE DECIMALS +/-  
 ANGLES  
 SEE SWINGMASTER SPECIFICATION  
 G-1 FOR TOLERANCES NOT SPECIFIED  
 DIMENSIONS ARE IN INCHES  
 DO NOT SCALE DRAWING  
 SCALE: 1/8"

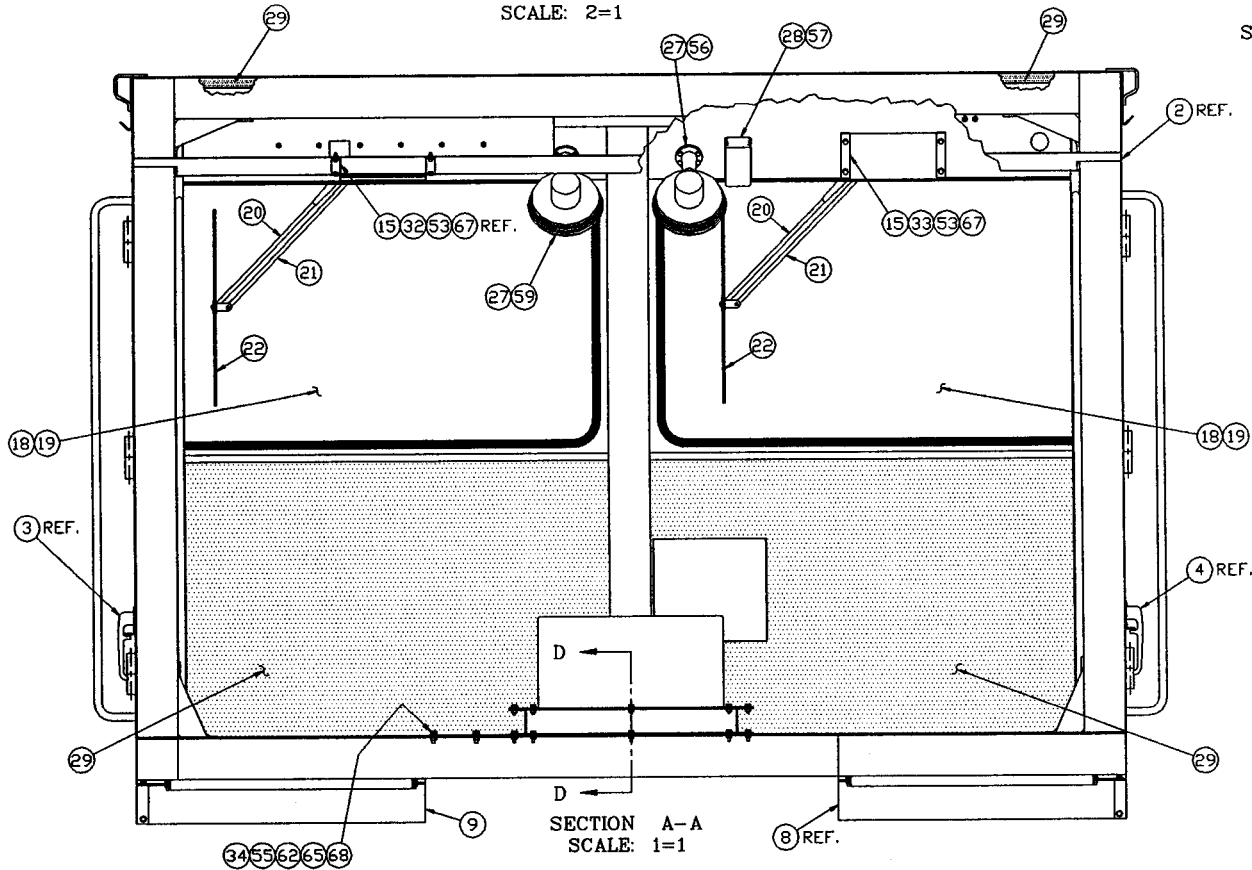
SWINGMASTER CORPORATION  
 11415 MELROSE AVENUE  
 FRANKLIN PARK, ILLINOIS 60131  
 CAB ASSEMBLY  
 MODEL SL180 TILT CAB  
 DRAWN BY: J.K. DATE: 1-25-99  
 DRAWING NO. SHEET 1 OF 2  
 D-837



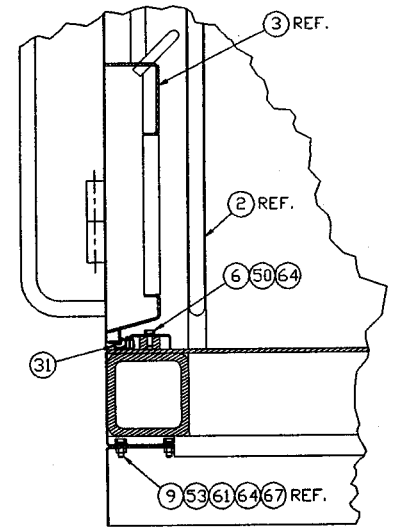
SECTION D-D  
SCALE: 2=1



SECTION C-C  
SCALE: 2=1



SECTION A-A  
SCALE: 1=1



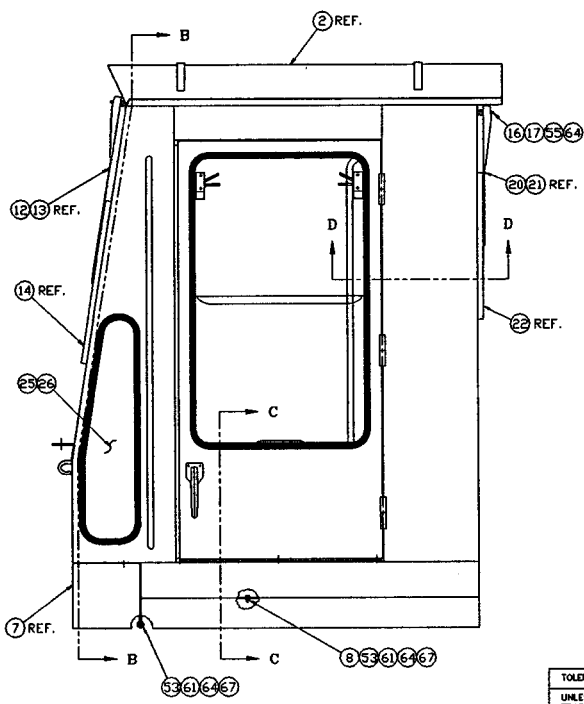
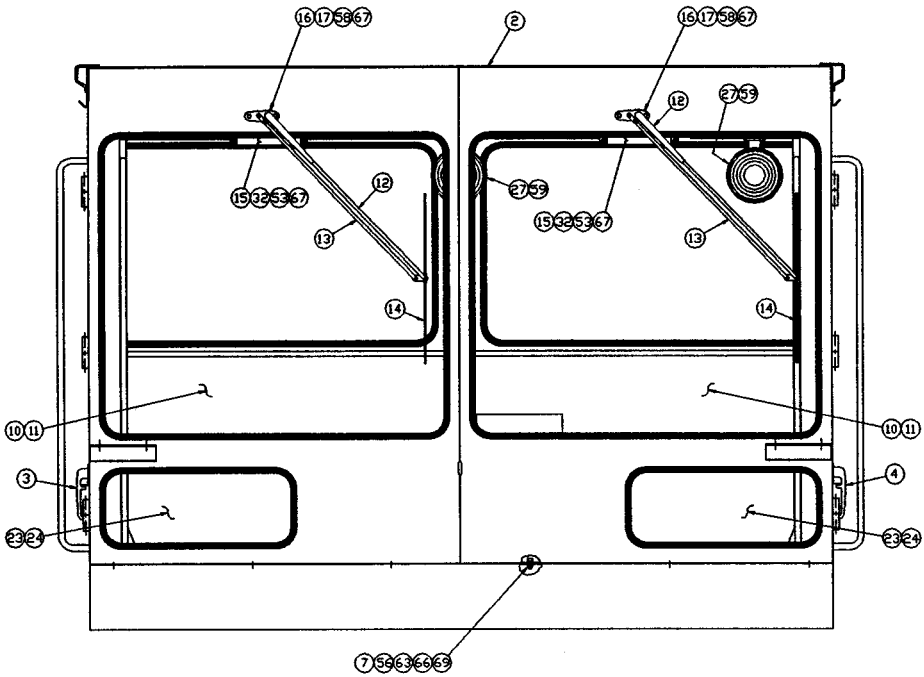
SECTION B-B  
SCALE: 2=1

<p>TOLERANCES UNLESS OTHERWISE SPECIFIED FRACTIONS ±/− 3 PLACE DECIMALS ±/− 2 PLACE DECIMALS ±/− 1 PLACE DECIMALS ±/− ANGLES</p>	<p>SWINGMASTER CORPORATION 11415 MELROSE AVENUE FRANKLIN PARK, ILLINOIS 60131</p>	
	<p>CAB ASSEMBLY MODEL SL180 TILT CAB</p>	
<p>SEE SWINGMASTER SPECIFICATION G-1 FOR TOLERANCES NOT SPECIFIED</p>	<p>DRAWN BY: J.K.</p>	<p>DRAWING NO. SHEET 2 OF 2</p>
<p>DIMENSIONS ARE IN INCHES DO NOT SCALE DRAWING SCALE: 1/6</p>	<p>DATE: 1-25-99</p>	<p>D-837</p>

MACHINE	SECTION	19
-----	-----	-----
MODEL SL180 SWINGLOADER	CAB	
-----	-----	-----

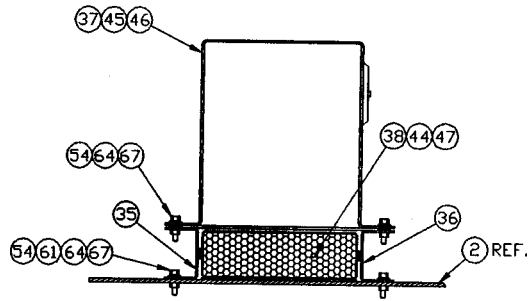
ASSEMBLY NUMBER	DESCRIPTION
-----	-----
1806004	CAB ASSEMBLY MODEL SL180
-----	-----

ITEM NO.	PART NUMBER	DESCRIPTION	QTY. USED
-----	-----	-----	-----
033	1806029	REAR MOTOR COVER	2.00
034	1806030	REMOVABLE FLOOR PLATE	1.00
035	8700856	MAIN HEATER BRACKET WELDMENT	1.00
036	8700857	HEATER BRACKET ARM WELDMENT	1.00
037	8700858	HEATER ASSEMBLY	1.00
038	8700859	AIR FILTER	1.00
039	8700873	HEATER HOSE	1.00
040	8700874	HEATER HOSE	1.00
041	8700876		2.00
042	1800692	1 3/4" HOSE CLAMP	4.00
043	1803889	RUBBER SHEETING	1.00
044	1805997	SEAL STRIPPING	2.00
045	1805997	SEAL STRIPPING	2.00
046	1805997	SEAL STRIPPING	2.00
047	1805997	SEAL STRIPPING	2.00
048	1803215	HOSE CLAMP - 1 1/8"	1.00
049	1803955	HOSE CLAMP - 9/16"	2.00
050	1806041	HANDLE	4.00
051	1806042	DOOR STRAP	2.00
052	1800433	H.H.C.S. 1/4-20 X 5/8" LONG	6.00
053	1800436	H.H.C.S. 1/4-20 X 3/4" LONG	32.00
054	1800437	H.H.C.S. 1/4-20 X 1" LONG	20.00
055	1800443	H.H.C.S. 5/16-18 X 1" LONG	8.00
056	1800452	H.H.C.S. 3/8-16 X 1" LONG	8.00
057	1800073	H.H.C.S. 1/4-28 X 3/4" LONG	8.00
058	1801431	H.H.C.S. 1/4-28 X 1 3/4" LONG	8.00
059	1806031	TRUSS HEAD TAPPING SCREW 5/16-12	16.00
060	1806032	TRUSS HEAD TAPPING SCREW #10-24	4.00
061	1800510	HEX NUT 1/4-20	26.00
062	1800512	HEX NUT 5/16-18	8.00
063	1800514	HEX NUT 3/8-16	8.00

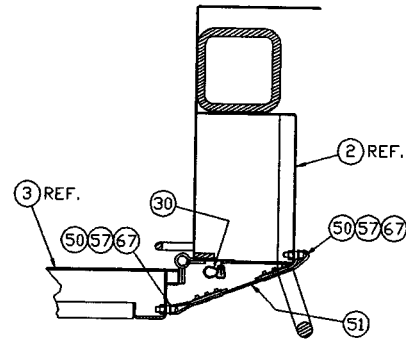


① ASSEMBLY

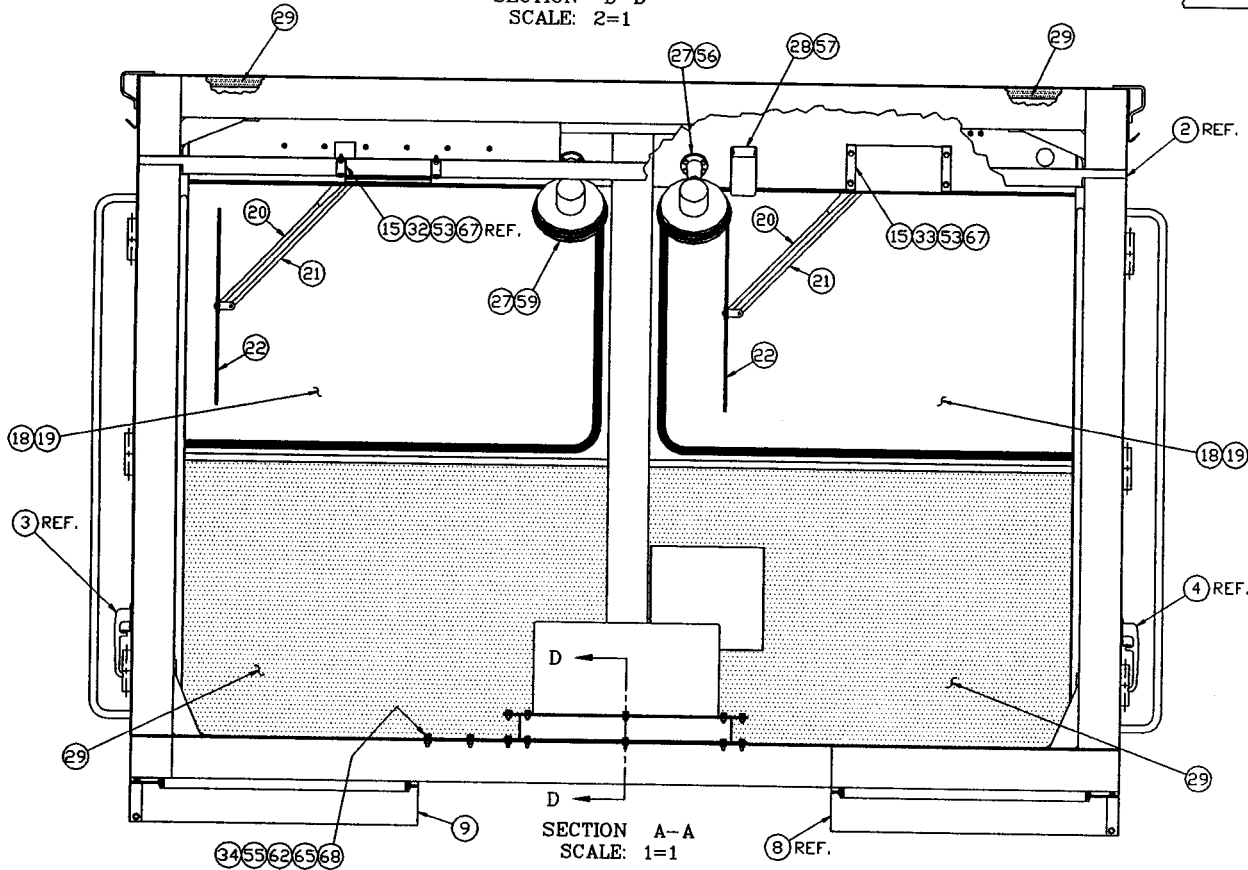
<b>TOLERANCES</b> UNLESS OTHERWISE SPECIFIED FRACTIONS +/- 3 PLACE DECIMALS +/- 2 PLACE DECIMALS +/- 1 PLACE DECIMALS +/- ANGLES	<b>SWINGMASTER CORPORATION</b> 11415 MELROSE AVENUE FRANKLIN PARK, ILLINOIS 60131	
	<b>CAB ASSEMBLY</b> MODEL SL180 TILT CAB	
SEE SWINGMASTER SPECIFICATION G-1 FOR TOLERANCES NOT SPECIFIED	DRAWN BY: J.K. DATE: 1-25-99	DRAWING NO. SHEET 1 OF 2 D-837



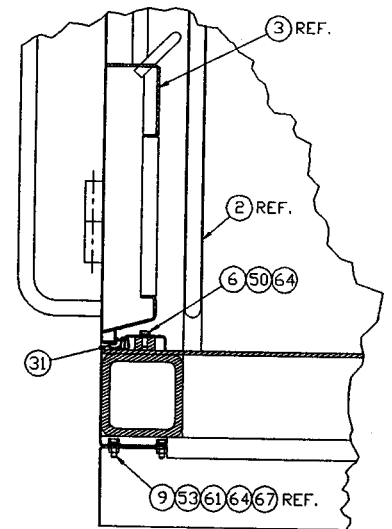
SECTION D-D  
SCALE: 2=1



SECTION C-C  
SCALE: 2=1



SECTION A-A  
SCALE: 1=1



SECTION B-B  
SCALE: 2=1

<p>TOLERANCES</p> <p>UNLESS OTHERWISE SPECIFIED</p> <p>FRACTIONS +/-</p> <p>3 PLACE DECIMALS +/-</p> <p>2 PLACE DECIMALS +/-</p> <p>1 PLACE DECIMALS +/-</p> <p>ANGLES</p> <p>SEE SWINGMASTER SPECIFICATION</p> <p>0-1 FOR TOLERANCES NOT SPECIFIED</p> <p>DIMENSIONS ARE IN INCHES</p> <p>DO NOT SCALE DRAWING</p> <p>SCALE: 1/6</p>	<p>SWINGMASTER CORPORATION</p> <p>11415 MELROSE AVENUE</p> <p>FRANKLIN PARK, ILLINOIS 60131</p>	
	<p>CAB ASSEMBLY</p> <p>MODEL SL180 TILT CAB</p>	
<p>DRAWN BY: J.K.</p> <p>DATE: 1-25-99</p>	<p>DRAWING NO.</p> <p>SHEET 2 OF 2</p>	<p>D-837</p>

MACHINE

SECTION

19

MODEL SL180 SWINGLOADER

CAB

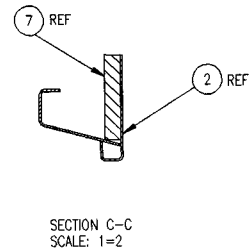
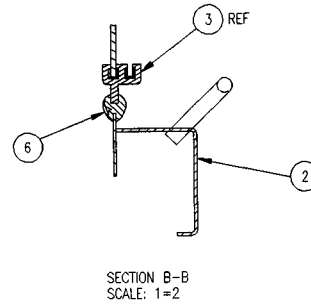
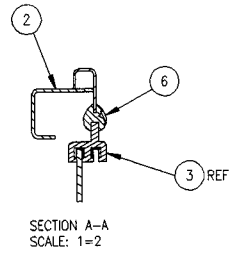
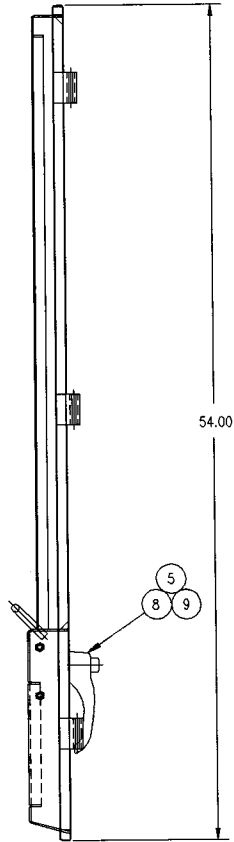
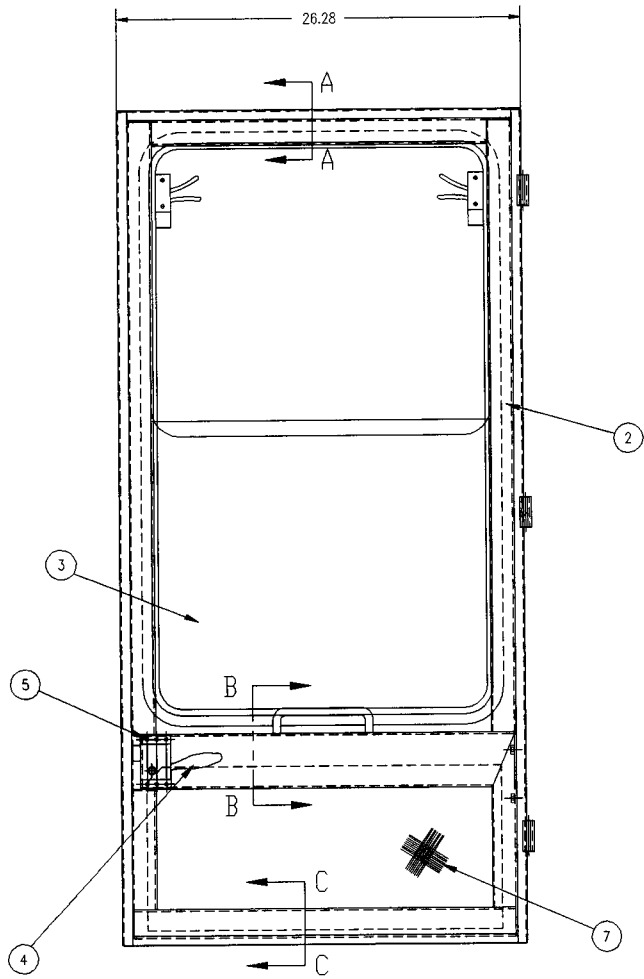
ASSEMBLY  
NUMBER

DESCRIPTION

1806004

CAB ASSEMBLY MODEL SL180

ITEM NO.	PART NUMBER	DESCRIPTION	QTY. USED
064	1800548	1/4" FLAT WASHER	36.00
065	1800550	5/16" FLAT WASHER	8.00
066	1800552	3/8" FLAT WASHER	8.00
067	1800567	1/4" LOCK WASHER	74.00
068	1800074	5/16" LOCK WASHER	8.00
069	1800568	3/8" LOCK WASHER	8.00
070	1800958	RUBBER GROMMET 1/4" DIAMETER	5.00



1 ASSEMBLY

TOLERANCES  
UNLESS OTHERWISE SPECIFIED  
FRACTIONS +/-  
3 PLACE DECIMALS +/-  
2 PLACE DECIMALS +/-  
1 PLACE DECIMALS +/-  
ANGLES  
SEE SWINGMASTER SPECIFICATION  
G-1 FOR TOLERANCES NOT SPECIFIED  
DIMENSIONS ARE IN INCHES  
DO NOT SCALE DRAWING  
SCALE: 1/4

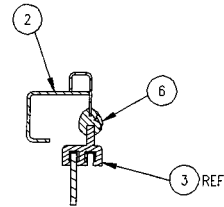
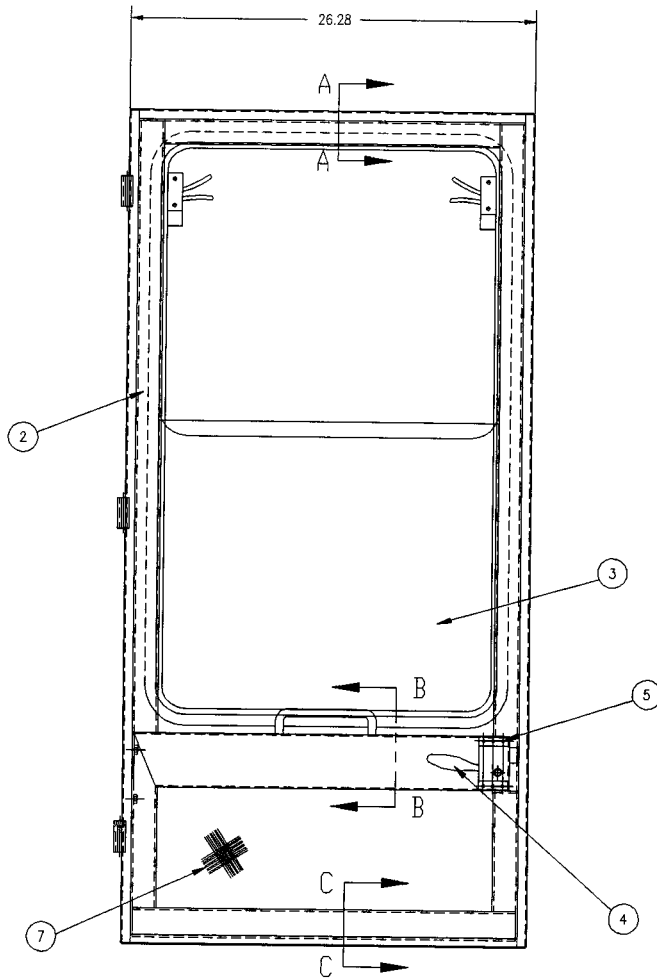
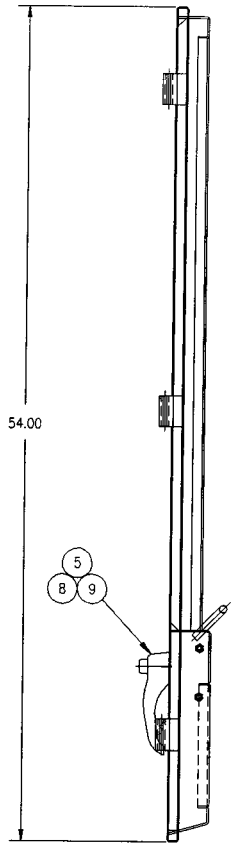
SWINGMASTER CORPORATION  
11415 MELROSE AVENUE  
FRANKLIN PARK, ILLINOIS 60131  
DOOR ASSEMBLY - R.H.  
MODEL SL180-15  
DRAWN BY: J.K.  
DATE: 5-1-98  
DRAWING NO.  
D-758

MACHINE	SECTION	19
-----	-----	-----
MODEL SL180 SWINGLOADER	CAB	
-----	-----	-----

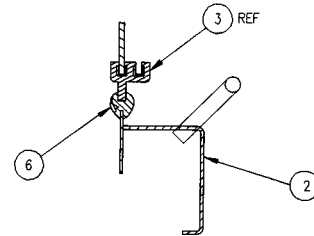
ASSEMBLY NUMBER	DESCRIPTION
-----	-----
1806005	RIGHTHAND DOOR ASSEMBLY
-----	-----

ITEM NO.	PART NUMBER	DESCRIPTION	QTY. USED
-----	-----	-----	-----
002	1806033	DOOR WELDMENT - R.H.	1.00
003	1806040	DROP WINDOW ASSEMBLY	1.00
004	1806002	LEFTHAND DOOR LATCH	1.00
005	1806035	TRUSS HEAD TAPPING SCREW #12-14	9.00
006	1806013	WINDOW WEATHER STRIP	1.00
007	1806037	INSULATION PAD	1.00
008	1806038	PADLOCK HANDLE	1.00
009	1806039	GASKET	1.00
-----	-----	-----	-----

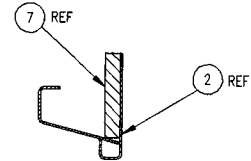




SECTION A-A  
SCALE: 1=2



SECTION B-B  
SCALE: 1=2



SECTION C-C  
SCALE: 1=2

1 ASSEMBLY

<p>TOLERANCES</p> <p>UNLESS OTHERWISE SPECIFIED</p> <p>FRACTIONS +/-</p> <p>3 PLACE DECIMALS +/-</p> <p>2 PLACE DECIMALS +/-</p> <p>1 PLACE DECIMALS +/-</p> <p>ANGLES</p> <p>SEE SWINGMASTER SPECIFICATION:</p> <p>C-1 FOR TOLERANCES NOT SPECIFIED</p> <p>DIMENSIONS ARE IN INCHES</p> <p>DO NOT SCALE DRAWING</p> <p>SCALE: 1/4</p>		<p>SWINGMASTER CORPORATION</p> <p>11415 MELROSE AVENUE</p> <p>FRANKLIN PARK, ILLINOIS 60131</p> <p>DOOR ASSEMBLY - L.H.</p> <p>MODEL SL180-15</p>	
<p>DRAWN BY: R.V.W</p> <p>DATE: 5-1-98</p>		<p>DRAWING NO.</p> <p>D-759</p>	

MACHINE	SECTION	19
-----	-----	-----
MODEL SL180 SWINGLOADER	CAB	
-----	-----	-----

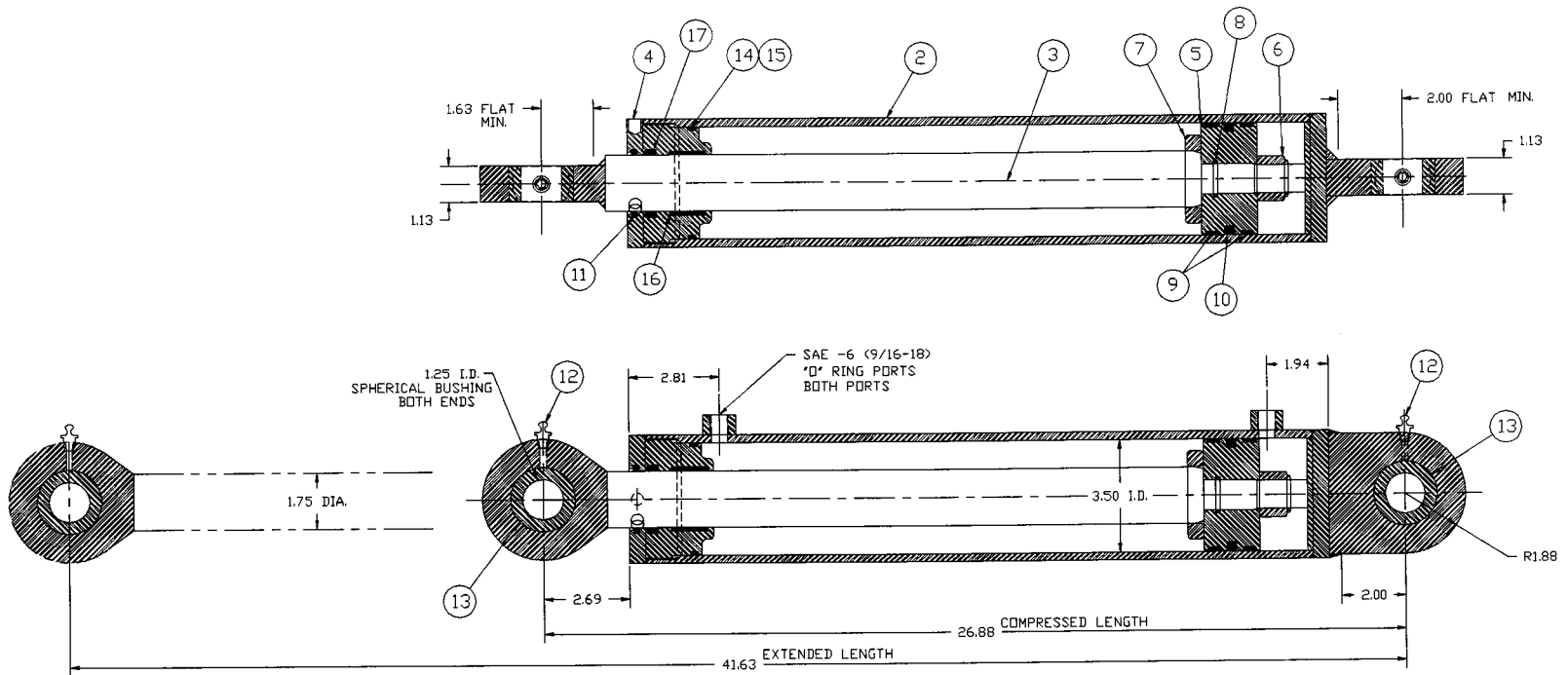
ASSEMBLY  
NUMBER

DESCRIPTION

-----  
1806006  
-----

-----  
LEFTHAND DOOR ASSEMBLY  
-----

ITEM NO.	PART NUMBER	DESCRIPTION	QTY. USED
-----	-----	-----	-----
002	1806034	DOOR WELDMENT - L.H.	1.00
003	1806040	DROP WINDOW ASSEMBLY	1.00
004	1805999	RIGHTHAND DOOR LATCH	1.00
005	1806035	TRUSS HEAD TAPPING SCREW #12-14	9.00
006	1806036	DOOR WINDOW WEATHER STRIP	1.00
007	1806037	INSULATION PAD	1.00
008	1806038	PADLOCK HANDLE	1.00
009	1806039	GASKET	1.00
-----	-----	-----	-----



① ASSEMBLY

TOLERANCES

UNLESS OTHERWISE SPECIFIED  
 FRACTIONS +/-  
 3 PLACE DECIMALS +/-  
 2 PLACE DECIMALS +/-  
 1 PLACE DECIMALS +/-  
 ANGLES

SEE SWINGMASTER SPECIFICATION  
 G-1 FOR TOLERANCES NOT SPECIFIED

DIMENSIONS ARE IN INCHES  
 DO NOT SCALE DRAWING  
 SCALE: 1/3

SWINGMASTER CORPORATION

11415 MELROSE AVENUE  
 FRANKLIN PARK, ILLINOIS 60131

CAB TILT CYLINDER

DRAWN BY: R.M.

DATE: 12-8-97

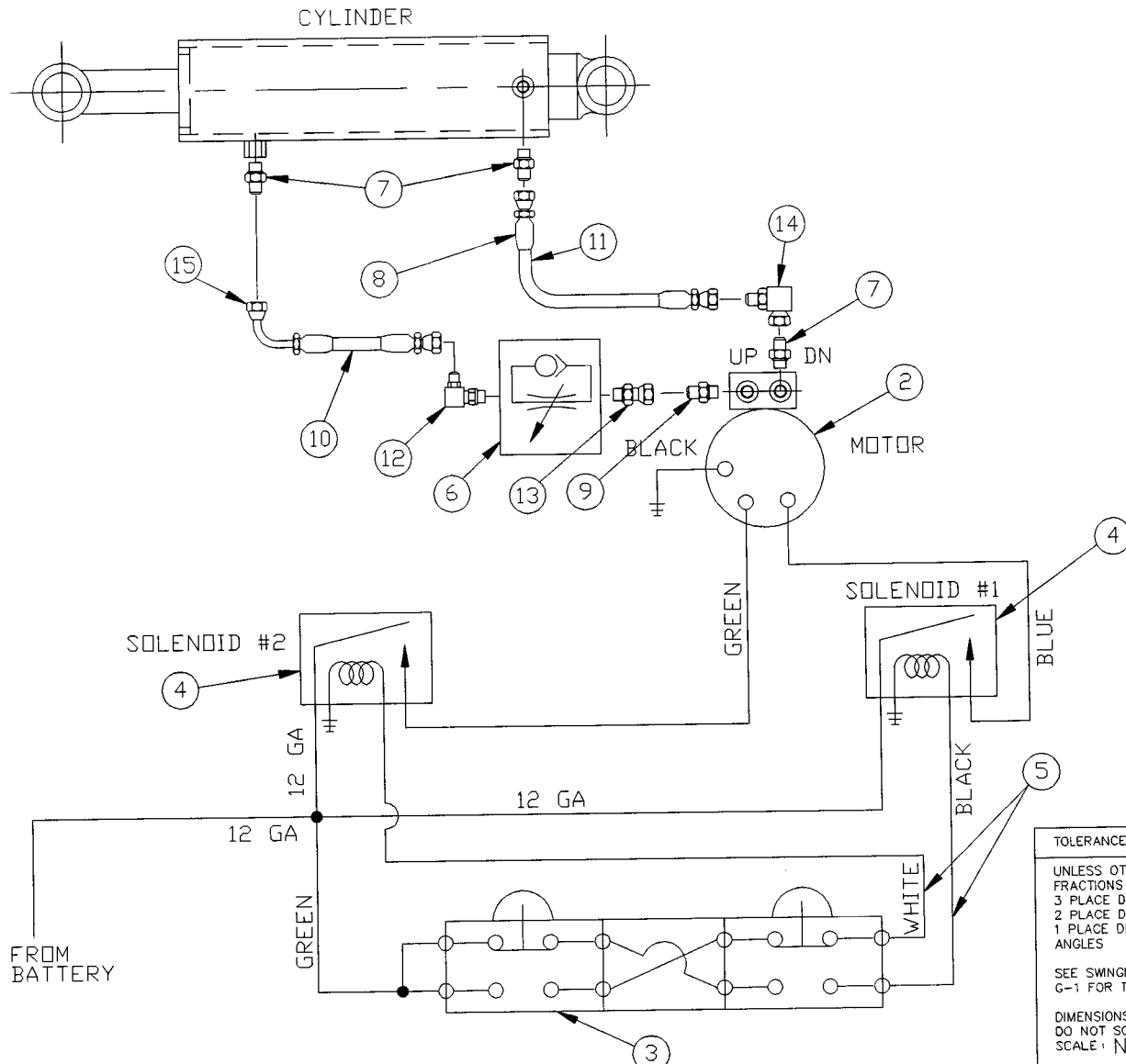
DRAWING NO.

C-337

MACHINE	SECTION	19
-----	-----	-----
MODEL SL180 SWINGLOADER	CAB	
-----	-----	-----

ASSEMBLY NUMBER	DESCRIPTION
-----	-----
1806228	HYDRAULIC CYLINDER
-----	-----

ITEM NO.	PART NUMBER	DESCRIPTION	QTY. USED
-----	-----	-----	-----
2	1806229	CASE WELDMENT	1.00
3	1806230	ROD WELDMENT	1.00
4	1806231	CAP	1.00
5	1806170	PISTON	1.00
6	1802194	ESNA NUT 7/8-9	1.00
7	1806232	SPACER	1.00
8	1806172	O-RING	1.00
9	1806173	WEAR RING	2.00
10	1806174	PISTON SEAL	1.00
11	1806175	WIPER	1.00
12	1800663	STRAIGHT 1/8" MALE-PIPE GREASE FITTING	2.00
13	1806176	SPHERICAL BUSHING	2.00
14	1806177	O-RING	1.00
15	1806178	BACKUP RING	1.00
16	1806179	WEAR RING	3.00
17	1806171	ROD SEAL	1.00
-----	-----	-----	-----



① ASS'Y

TOLERANCES
UNLESS OTHERWISE SPECIFIED
FRACTIONS +/-
3 PLACE DECIMALS +/-
2 PLACE DECIMALS +/-
1 PLACE DECIMALS +/-
ANGLES
SEE SWINGMASTER SPECIFICATION
G-1 FOR TOLERANCES NOT SPECIFIED
DIMENSIONS ARE IN INCHES
DO NOT SCALE DRAWING
SCALE: NONE

<b>SWINGMASTER CORPORATION</b>	
11415 MELROSE AVENUE FRANKLIN PARK, ILLINOIS 60131	
HYD. MOTOR AND SWITCH SCHEMATIC	
DRAWN BY: R.M.	DRAWING NO.
DATE: 4-21-97	H-394

MACHINE	SECTION	19
MODEL SL180 SWINGLOADER	CAB	

ASSEMBLY  
NUMBER

DESCRIPTION

1805966

ELECTRIC PUMP & WIRING INSTALLATION

ITEM NO.	PART NUMBER	DESCRIPTION	QTY. USED
002	1805967	HYDRAULIC PUMP	1.00
003	1805680	(2) BUTTON SWITCH	1.00
004	1800224	SOLENOID	2.00
005	1805681	18/3 SO CORDSWITCH	6.00
006	1805682	FLOW CONTROL VALVE	1.00
007	1803803	STRAIGHT MALE 1/4 O-RING TO 1/4 TUBE	3.00
008	1800976	STRAIGHT 1/4 TUBE F-1503-4	3.00
009	1802245	STRAIGHT MALE 1/4 O-RING TO 3/8 TUBE	1.00
010	1800705	1503-4 BULK HOSE/(IN)	1.00
011	1800705	1503-4 BULK HOSE/(IN)	1.00
012	1805022	O-RING ELBOW -4-6	1.00
013	1805686	SWIVEL ELBOW	1.00
014	1804552	90 DEG TUBE SWIVEL ELBOW 1/4-M TO 1/4-F	1.00
015	1800977	90 DEG SHORT ELBOW 1/4 UNI F-1503-4	1.00