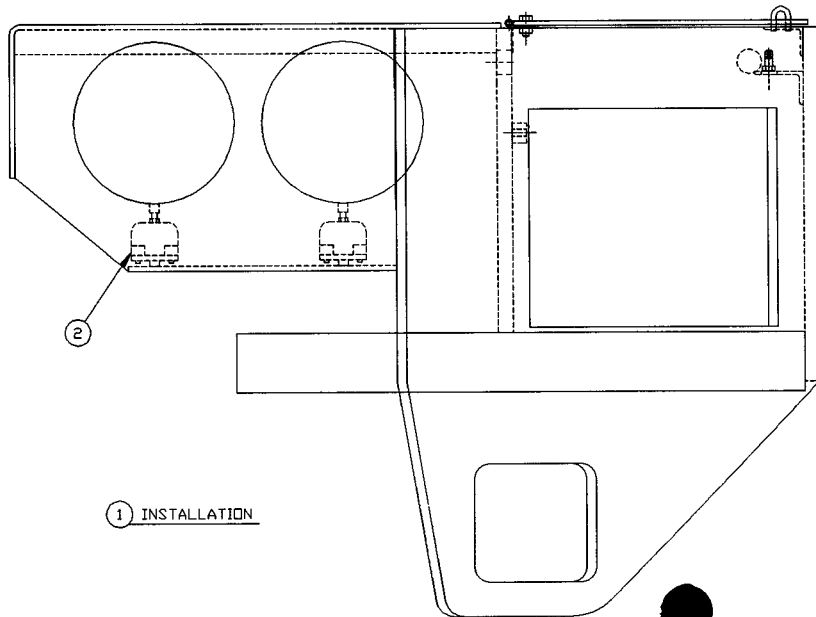
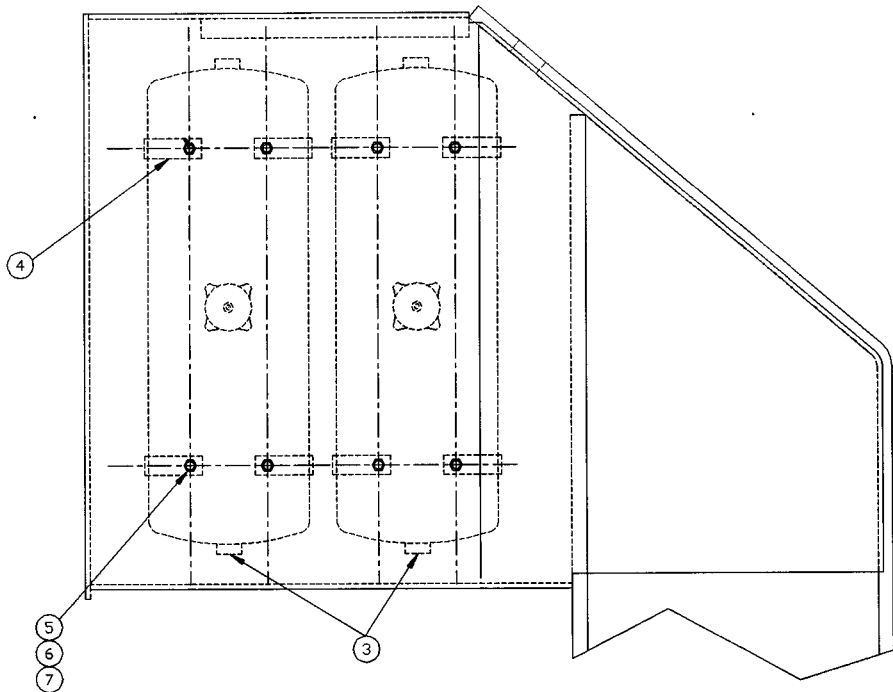


SECTION R

COMPRESSED

AIR

SYSTEM



1 INSTALLATION

TOLERANCES
 UNLESS OTHERWISE SPECIFIED
 FRACTIONS +/-
 3 PLACE DECIMALS +/-
 2 PLACE DECIMALS +/-
 1 PLACE DECIMALS +/-
 ANGLES

SEE SWINGMASTER SPECIFICATION
 G-1 FOR TOLERANCES NOT SPECIFIED

DIMENSIONS ARE IN INCHES
 DO NOT SCALE DRAWING
 SCALE 1=4

SWINGMASTER CORPORATION	
11415 MELROSE AVENUE FRANKLIN PARK, ILLINOIS 60131	
AIR TANK INSTALLATION	
MODEL SL180-15	
DRAWN BY: J.K.	DRAWN BY: J.K.
DATE: 9-10-98	C-374

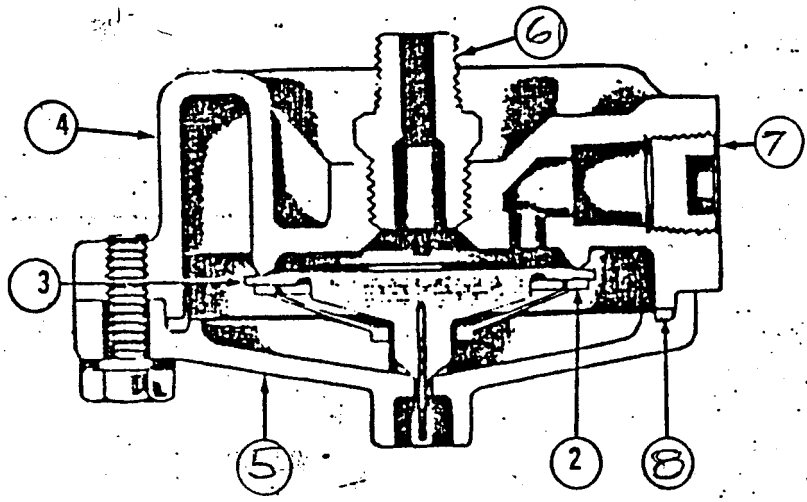
MACHINE	SECTION	18
-----	-----	-----
MODEL SL180 SWINGLOADER	COMPRESSED AIR SYSTEM	
-----	-----	-----

ASSEMBLY NUMBER	DESCRIPTION
-----	-----

1805940

AIR TANK INSTALLATION

ITEM NO.	PART NUMBER	DESCRIPTION	QTY. USED
-----	-----	-----	-----
002	1800137	AUTOMATIC RESEVOIR DRAIN VALVE	2.00
003	1800143	AIR RESEVOIR	2.00
004	1800919	RESERVOIR MOUNTING BRACKET	4.00
005	1800452	H.H.C.S. 3/8-16 X 1" LONG	8.00
006	1800514	HEX NUT 3/8-16	8.00
007	1800568	3/8" LOCK WASHER	8.00
-----	-----	-----	-----



① ASSEMBLY

MACHINE

SECTION

18

MODEL 361 SWINGLOADER

COMPRESSED AIR SYSTEM

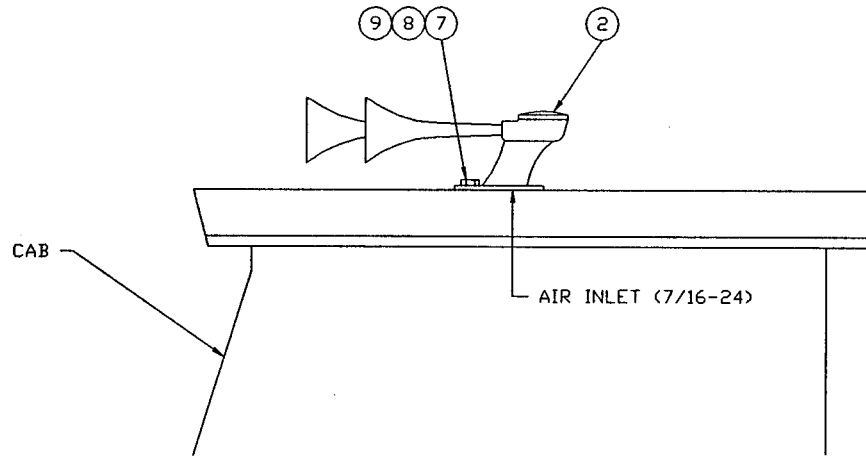
ASSEMBLY
NUMBER

DESCRIPTION

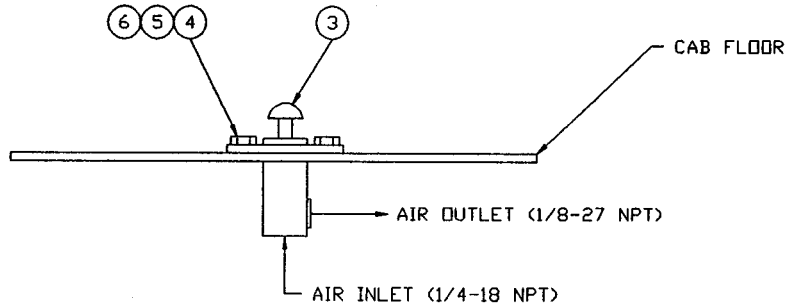
1800137

AUTOMATIC RESERVOIR DRAIN VALVE ASSEMBLY

ITEM NO.	PART NUMBER	DESCRIPTION	QTY. USED
2		VALVE GUIDE	1
3		INLET EXHAUST VALVE	1
4	8700577	BODY	1
5	8700578	COVER	1
6	8700579	ADAPTER	1
7	8700580	PIPE PLUG	1
8		SEALING RING	1
	8700581	MAINTENANCE KIT	1
		INCLUDES ITEMS 2,3,8	



← FRONT OF MACHINE



① INSTALLATION

<p>TOLERANCES</p> <p>UNLESS OTHERWISE SPECIFIED</p> <p>FRACTIONS +/-</p> <p>3 PLACE DECIMALS +/-</p> <p>2 PLACE DECIMALS +/-</p> <p>1 PLACE DECIMALS +/-</p> <p>ANGLES</p> <p>SEE SWINGMASTER SPECIFICATION</p> <p>G-1 FOR TOLERANCES NOT SPECIFIED</p> <p>DIMENSIONS ARE IN INCHES</p> <p>DO NOT SCALE DRAWING</p> <p>SCALE: NONE</p>		<p>SWINGMASTER CORPORATION</p> <p>11415 MELROSE AVENUE FRANKLIN PARK, ILLINOIS 60131</p>	
		<p>AIR HORN INSTALLATION</p>	
		<p>MODEL 361</p>	
	<p>DRAWN BY: R.O.</p>	<p>DRAWING NO.</p>	
	<p>DATE: 11-25-88</p>	<p>H-176</p>	

SWINGMASTER CORPORATION

PARTS BOOK

MACHINE

SECTION

18

MODEL 361 SWINGLOADER

COMPRESSED AIR SYSTEM

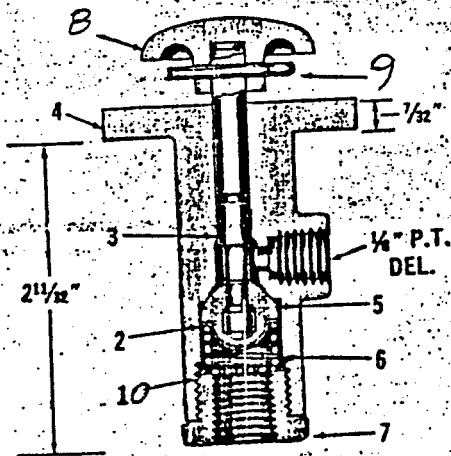
ASSEMBLY
NUMBER

DESCRIPTION

1802221

AIR HORN INSTALLATION

ITEM NO.	PART NUMBER	DESCRIPTION	QTY. USED
2	1800290	DUAL AIR HORN - INCLUDES ITEMS 2a + 2b	1
2a	8700896	SMALL TRUMPET 10" LONG - NOT SHOWN	1
2b	8700897	BIG TRUMPET 12.5" LONG - NOT SHOWN	1
3	1800144	HORN BUTTON	1
4	1800437	H.H.C.S. 1/4-20 X 1" LONG	2
5	1800510	HEX NUT 1/4-20	2
6	1800567	1/4" LOCK WASHER	2
7	1800443	H.H.C.S. 5/16-18 X 1" LONG	1
8	1800512	HEX NUT 5/16-18	1
9	1800074	5/16" LOCK WASHER	1



① ASSEMBLY

MACHINE

SECTION

18

MODEL 361 SWINGLOADER

COMPRESSED AIR SYSTEM

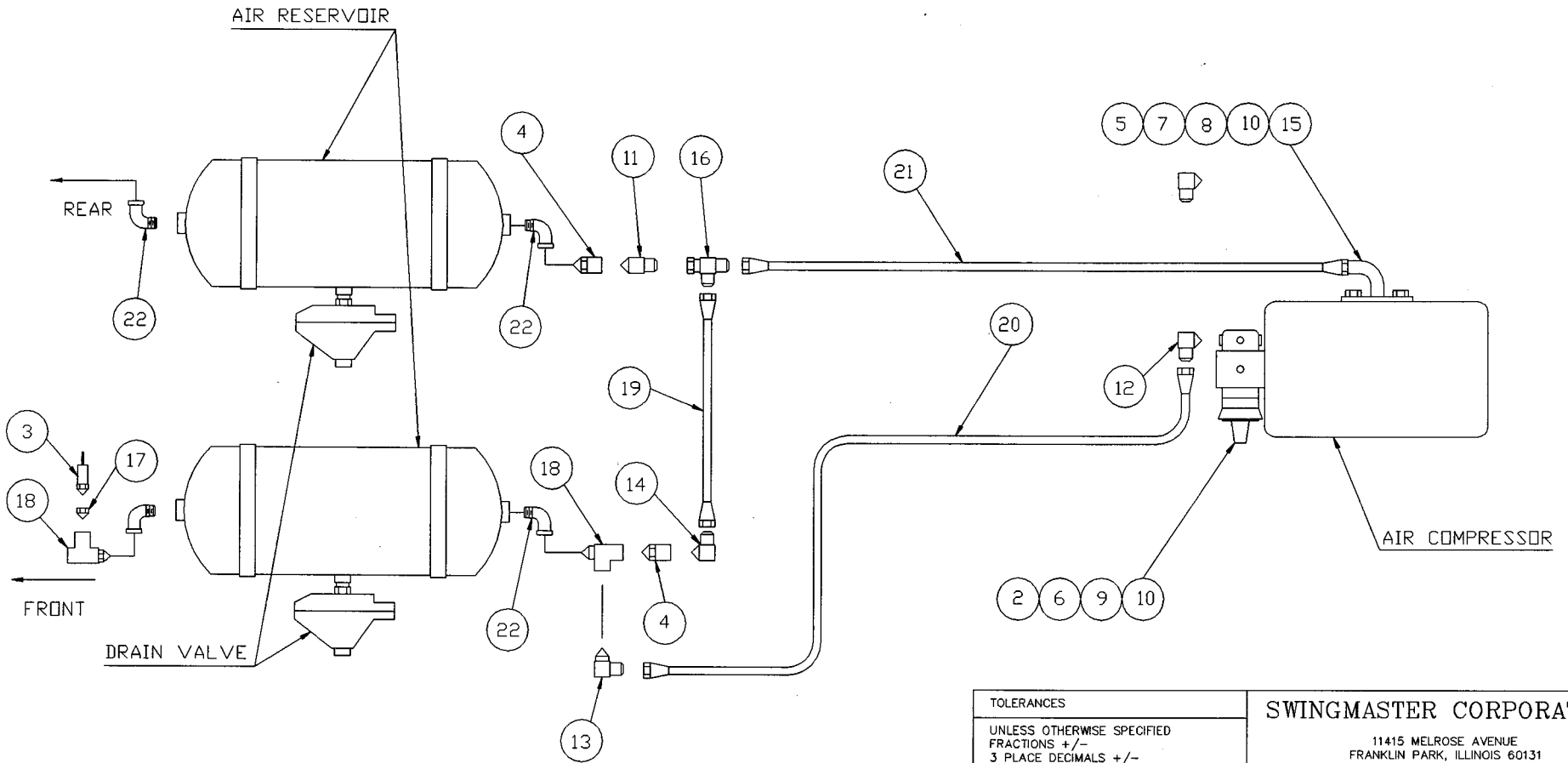
ASSEMBLY
NUMBER

DESCRIPTION

1800144

HORN BUTTON ASSEMBLY

ITEM NO.	PART NUMBER	DESCRIPTION	QTY. USED
2	8700595	SPRING SEAT	1
3	8700596	STEM	1
4	8700625	BODY	1
5	8700626	INLET VALVE	1
6	8700627	SPRING	1
7	8700528	CAP	1
8	8700629	BUTTON	1
9	8700630	COTTER PIN	1
10	8700631	STRAINER PLATE	1



1 INSTALLATION

<p>TOLERANCES</p> <p>UNLESS OTHERWISE SPECIFIED</p> <p>FRACTIONS +/-</p> <p>3 PLACE DECIMALS +/-</p> <p>2 PLACE DECIMALS +/-</p> <p>1 PLACE DECIMALS +/-</p> <p>ANGLES</p> <p>SEE SWINGMASTER SPECIFICATION</p> <p>G-1 FOR TOLERANCES NOT SPECIFIED</p> <p>DIMENSIONS ARE IN INCHES</p> <p>DO NOT SCALE DRAWING</p> <p>SCALE:</p>		<p>SWINGMASTER CORPORATION</p> <p>11415 MELROSE AVENUE FRANKLIN PARK, ILLINOIS 60131</p> <p>COMP. AIR SUPPLY LINES & FITTINGS</p> <p>MODEL SL180-15</p> <p>DRAWN BY: J.K.</p> <p>DATE: 9-10-98</p>	
		<p>DRAWING NO. 375</p>	

MACHINE	SECTION	18
MODEL SL180 SWINGLOADER	COMPRESSED AIR SYSTEM	

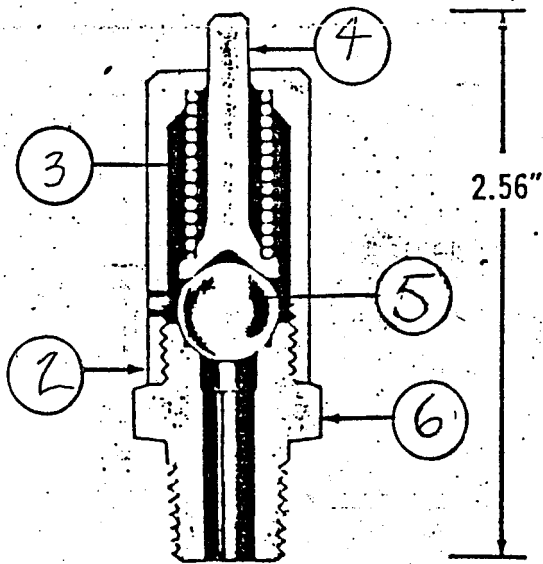
ASSEMBLY
NUMBER

DESCRIPTION

1805941

COMPRESSOR AIR SUPPLY LINES AND FITTINGS

ITEM NO.	PART NUMBER	DESCRIPTION	QTY. USED
002	1800139	AIR COMPRESSOR GOVERNOR	1.00
003	1800140	AIR RELIEF VALVE - 150 PSI	1.00
004	1800141	CHECK VALVE - 3/8"	2.00
005	1800146	DISCHARGE FITTING	1.00
006	1800147	GASKET - FOR GOVERNOR	1.00
007	1800148	GASKET - FOR DISCHARGE FITTING	1.00
008	1800442	H.H.C.S. 5/16-18 X 3/4" LONG	2.00
009	1800448	H.H.C.S. 5/16-18 X 3" LONG	2.00
010	1800074	5/16" LOCK WASHER	4.00
011	1800755	STRAIGHT MALE 3/8 PIPE TO 1/2 TUBE	1.00
012	1800776	90 DEG MALE ELBOW 1/8 PIPE TO 3/8 TUBE	1.00
013	1800781	90 DEG MALE ELBOW 3/8 PIPE TO 3/8 TUBE	1.00
014	1800782	90 DEG MALE ELBOW 3/8 PIPE TO 1/2 TUBE	1.00
015	1800784	90 DEG MALE ELBOW 1/2 PIPE TO 1/2 TUBE	1.00
016	1800859	1/2 TUBE RUN TEE M-F SWIVEL-M	1.00
017	1800904	STRAIGHT PIPE REDUCER BUSHING 3/8 TO 1/4	1.00
018	1800913	3/8 PIPE SERVICE TEE M-F-F	2.00
019	1805942	HOSE ASSEMBLY	1.00
020	1805943	HOSE ASSEMBLY	1.00
021	1805944	HOSE ASSEMBLY	1.00
022	1801470	90 DEG 3/8 PIPE STREET ELBOW M-F	4.00



1 ASSEMBLY

MACHINE

SECTION

7

MODEL 361 SWINGLOADER

SERVICE BRAKE SYSTEM

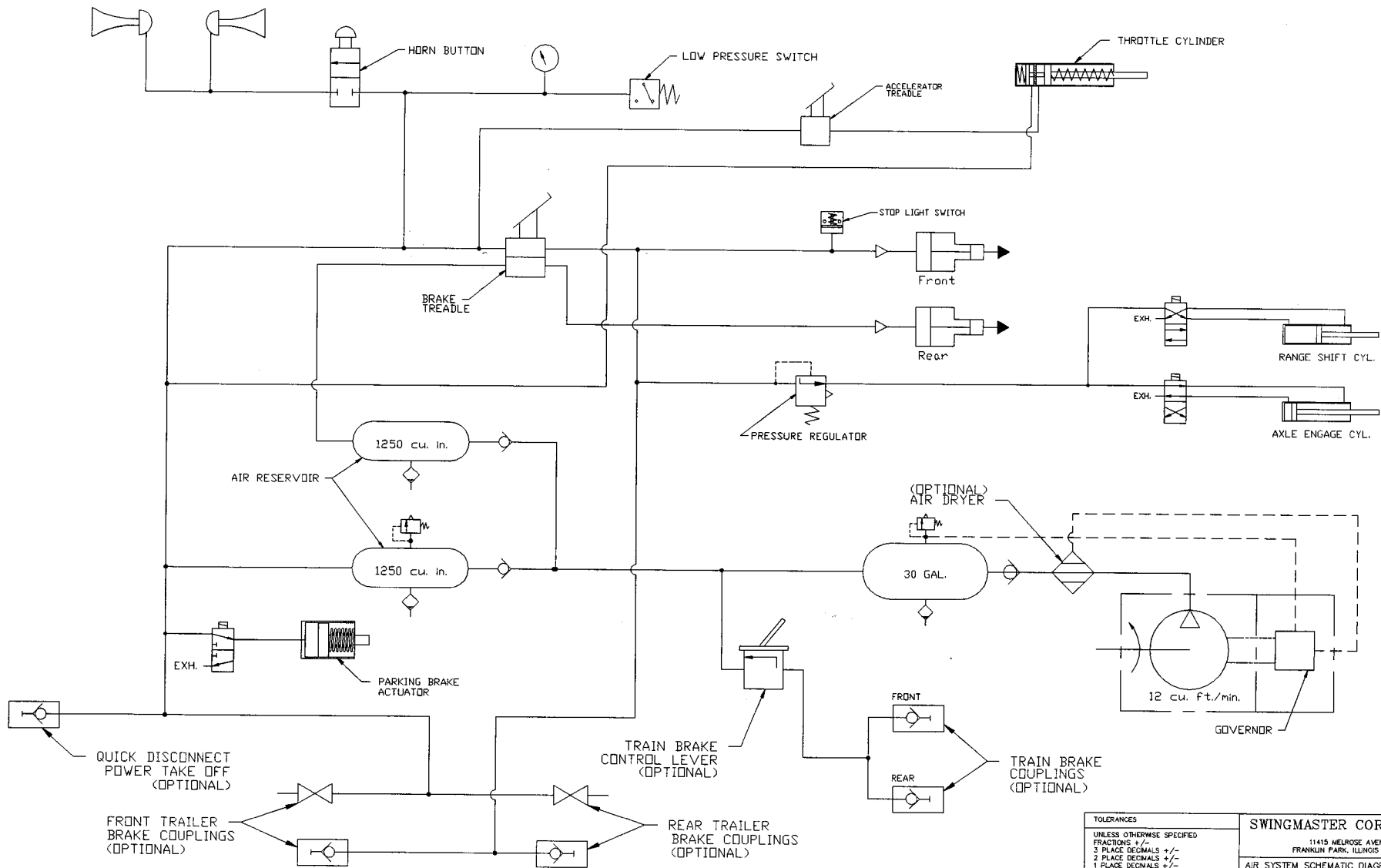
ASSEMBLY
NUMBER

DESCRIPTION

1800140

AIR RELIEF VALVE ASSEMBLY

ITEM NO.	PART NUMBER	DESCRIPTION	QTY. USED
2	8700587	SPRING CAGE	1
3	8700588	SPRING	1
4	8700589	RELEASE PIN	1
5	8700590	STEEL BALL	1
6	8700591	BODY	1



TOLERANCES
 UNLESS OTHERWISE SPECIFIED
 FRACTIONS +/-
 3 PLACE DECIMALS +/-
 2 PLACE DECIMALS +/-
 1 PLACE DECIMALS +/-
 ANGLES
 SEE SWINGMASTER SPECIFICATION
 G-1 FOR TOLERANCES NOT SPECIFIED
 DIMENSIONS ARE IN INCHES
 DO NOT SCALE DRAWING
 SCALE:

SWINGMASTER CORPORATION
 11415 MELOUSE AVENUE
 FRANKLIN PARK, ILLINOIS 60131
 AIR SYSTEM SCHEMATIC DIAGRAM
 MODEL SL180
 DRAWN BY: J.K. DATE: 7-23-98
 DRAWING NO. D-792