



SECTION R  
COMPRESSED AIR SYSTEM

---

SWINGMASTER CORPORATION

PARTS BOOK

---

MACHINE

SECTION

-----  
MODEL 361 SWINGLOADER  
-----

-----  
COMPRESSED AIR SYSTEM  
-----

SECTION            DESCRIPTION

-----  
AIR TANK INSTALLATION - UPPER

AIR TANK INSTALLATION - LOWER  
    AUTOMATIC RESERVOIR DRAIN VALVE ASSEMBLY

AIR HORN INSTALLATION  
    AIR HORN ASSEMBLY  
    HORN BUTTON ASSEMBLY

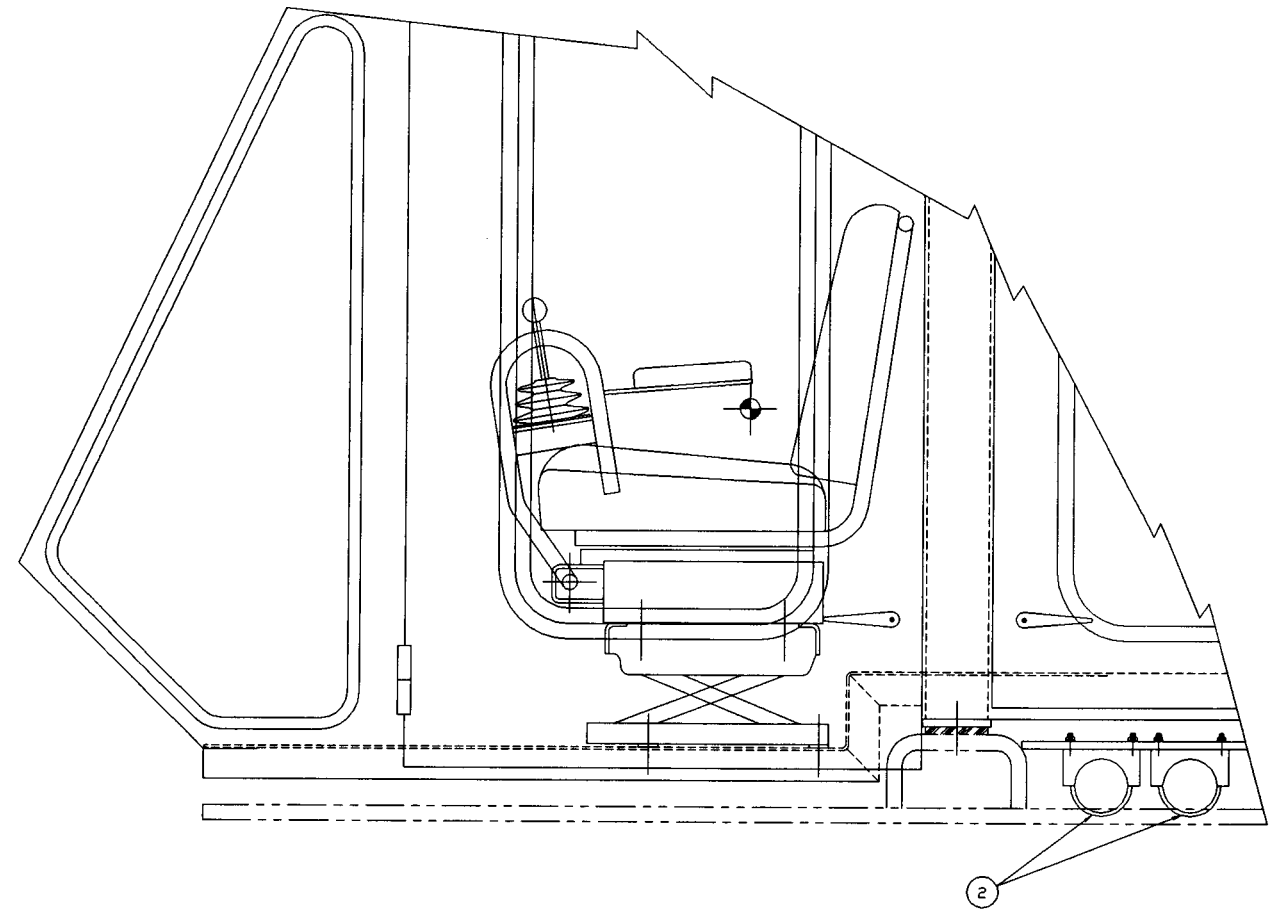
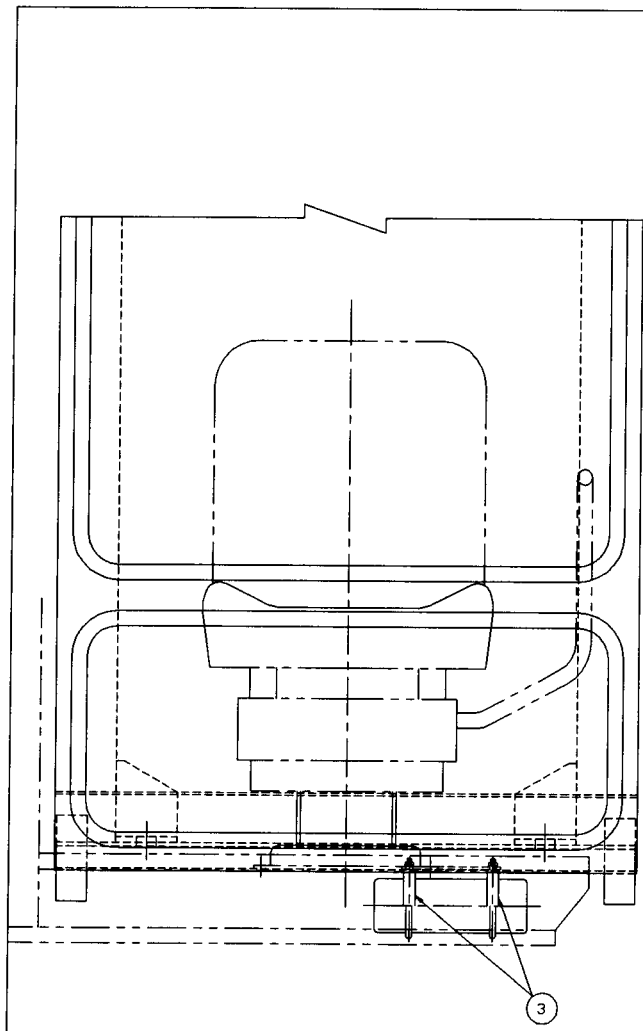
AIR SYSTEM SCHEMATIC DIAGRAM  
-----

---

SWINGMASTER CORPORATION  
11415 MELROSE AVENUE  
FRANKLIN PARK, ILLINOIS 60131

TELEPHONE: (847) 451-1224

---



1 INSTALLATION

|   |  |                    |
|---|--|--------------------|
| <p>TOLERANCES<br/>         UNLESS OTHERWISE SPECIFIED<br/>         FRACTIONS +/-<br/>         3 PLACE DECIMALS +/-<br/>         2 PLACE DECIMALS +/-<br/>         1 PLACE DECIMALS +/-<br/>         ANGLES</p> <p>SEE SWINGMASTER SPECIFICATION<br/>         G-1 FOR TOLERANCES NOT SPECIFIED</p> <p>DIMENSIONS ARE IN INCHES<br/>         DO NOT SCALE DRAWING<br/>         SCALE: 1"=4"</p> | <p><b>SWINGMASTER CORPORATION</b></p> <p>11415 MELROSE AVENUE<br/>         FRANKLIN PARK, ILLINOIS 60131</p> |                    |
|   | <p>UPPER AIR TANKS INSTALLATION</p>  |                    |
|   | <p>FOR MODEL 361</p>   |                    |
|   | <p>DRAWN BY: J.K.</p>  | <p>DRAWING NO.</p> |
| <p>DATE: 1-3-89</p>   | <p>D-246</p>   |                    |

---

SWINGMASTER CORPORATION

PARTS BOOK

---

MACHINE SECTION 18  
MODEL 361 SWINGLOADER COMPRESSED AIR SYSTEM

---

ASSEMBLY  
NUMBER

DESCRIPTION

1802538

AIR TANK INSTALLATION - UPPER

---

| ITEM PART              |         |                            | QTY. |
|------------------------|---------|----------------------------|------|
| NO. NUMBER DESCRIPTION |         |                            | USED |
| 2                      | 1802539 | AIR TANK - 93 CUBIC INCHES | 2.00 |
| 3                      | 1802540 | FLAT U-BOLT CLAMP - 3 1/2" | 4.00 |

---

---

SWINGMASTER CORPORATION

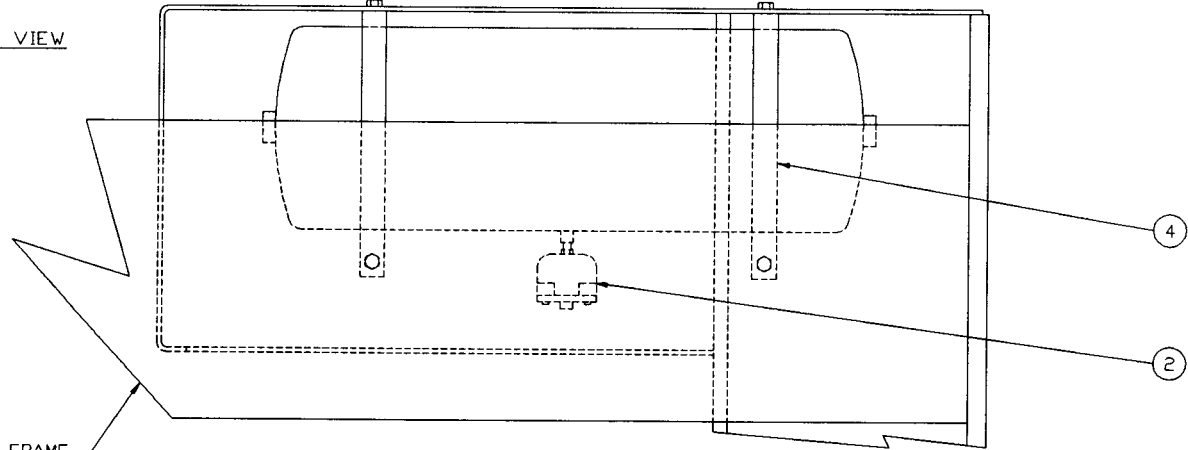
11415 MELROSE AVENUE

FRANKLIN PARK, ILLINOIS 60131

TELEPHONE: (847) 451-1224

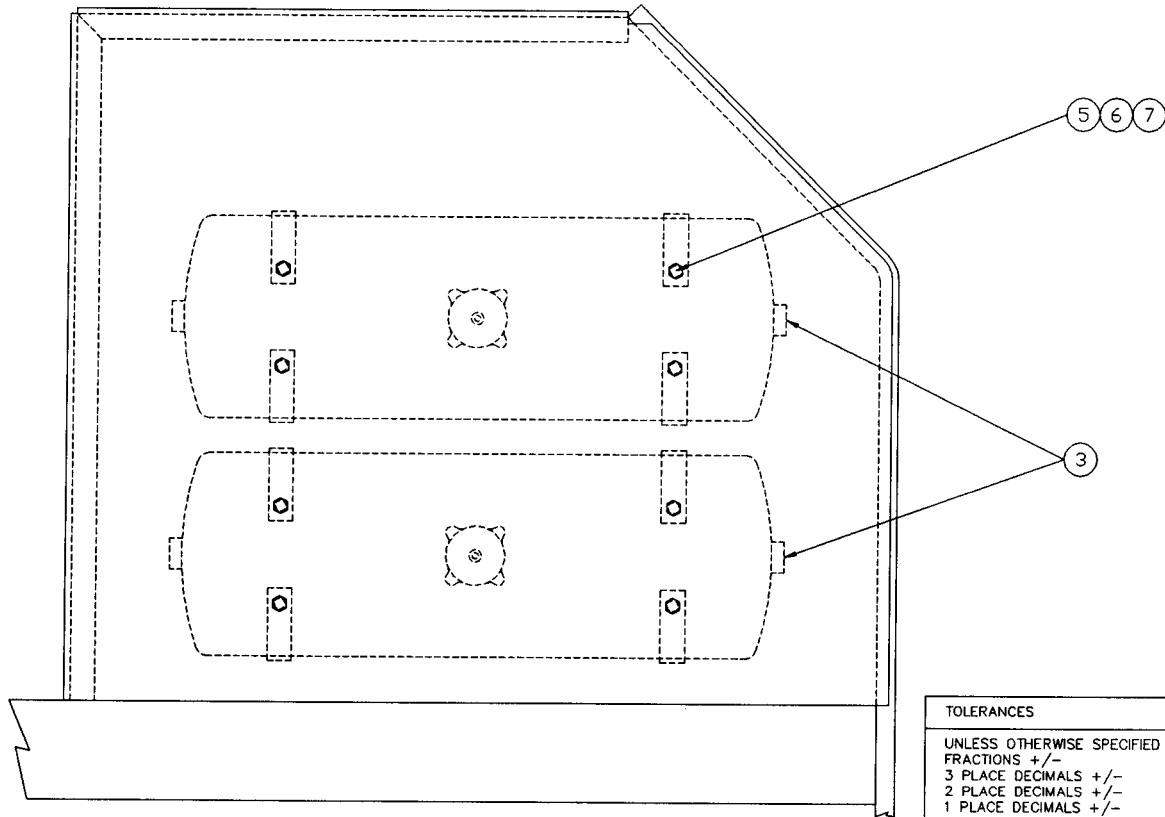
---

SIDE VIEW



MAIN FRAME

TOP VIEW



← FRONT OF MACHINE

① INSTALLATION

TOLERANCES

UNLESS OTHERWISE SPECIFIED  
 FRACTIONS +/-  
 3 PLACE DECIMALS +/-  
 2 PLACE DECIMALS +/-  
 1 PLACE DECIMALS +/-  
 ANGLES

SEE SWINGMASTER SPECIFICATION  
 G-1 FOR TOLERANCES NOT SPECIFIED

DIMENSIONS ARE IN INCHES  
 DO NOT SCALE DRAWING  
 SCALE: 1/4

SWINGMASTER CORPORATION

11415 MELROSE AVENUE  
 FRANKLIN PARK, ILLINOIS 60131

AIR TANK INSTALLATION - LOWER

MODEL 361

DRAWN BY: R.O.

DATE: 11-29-88

DRAWING NO.

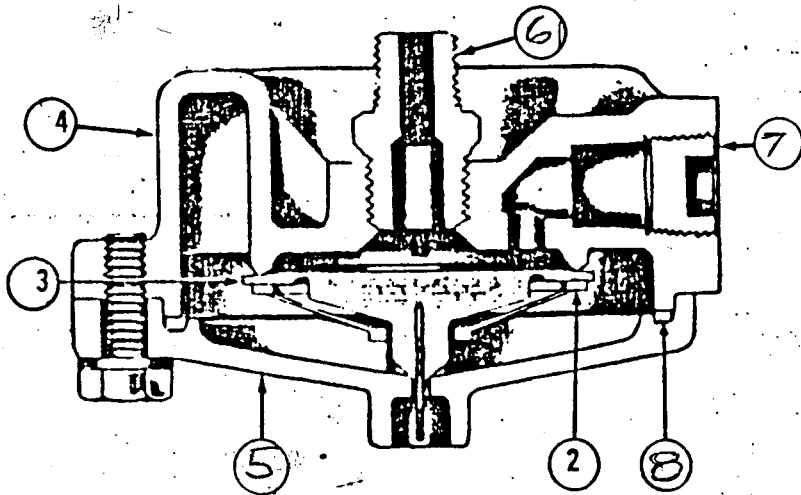
C-132

|                       |                       |       |
|-----------------------|-----------------------|-------|
| MACHINE               | SECTION               | 18    |
| -----                 | -----                 | ----- |
| MODEL 361 SWINGLOADER | COMPRESSED AIR SYSTEM |       |
| -----                 | -----                 | ----- |

|                    |                               |
|--------------------|-------------------------------|
| ASSEMBLY<br>NUMBER | DESCRIPTION                   |
| -----              | -----                         |
| 1802211            | AIR TANK INSTALLATION - LOWER |
| -----              | -----                         |

| ITEM PART<br>NO. NUMBER | DESCRIPTION                            | QTY.<br>USED |
|-------------------------|--|--------------|
| 2                       | 1800137 AUTOMATIC RESEVOIR DRAIN VALVE | 2.00         |
| 3                       | 1800143 AIR RESEVOIR                   | 2.00         |
| 4                       | 1800919 RESERVOIR MOUNTING BRACKET     | 4.00         |
| 5                       | 1800452 H.H.C.S. 3/8-16 X 1" LONG      | 8.00         |
| 6                       | 1800514 HEX NUT 3/8-16                 | 8.00         |
| 7                       | 1800568 3/8" LOCK WASHER               | 8.00         |

---



① ASSEMBLY

MACHINE

SECTION

18

-----  
MODEL 361 SWINGLOADER

-----  
COMPRESSED AIR SYSTEM  
-----

ASSEMBLY  
NUMBER

DESCRIPTION

-----  
1800137

-----  
AUTOMATIC RESERVOIR DRAIN VALVE ASSEMBLY  
-----

ITEM PART

QTY•

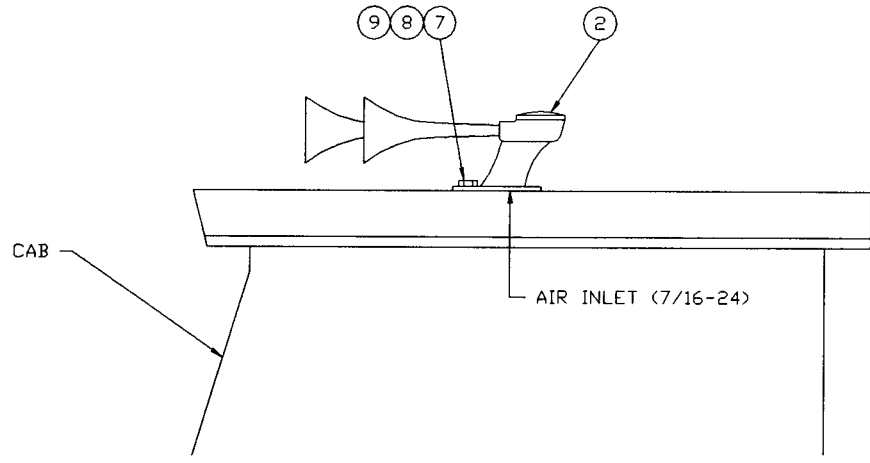
NO. NUMBER DESCRIPTION

USED

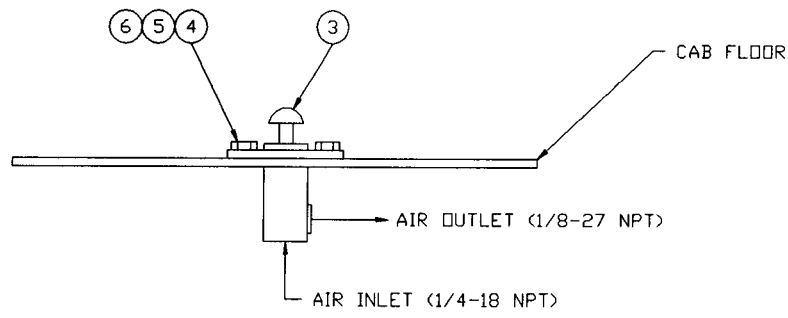
|   |         |                      |   |
|---|---------|----------------------|---|
| 2 |         | VALVE GUIDE          | 1 |
| 3 |         | INLET EXHAUST VALVE  | 1 |
| 4 | 8700577 | BODY                 | 1 |
| 5 | 8700578 | COVER                | 1 |
| 6 | 8700579 | ADAPTER              | 1 |
| 7 | 8700580 | PIPE PLUG            | 1 |
| 8 |         | SEALING RING         | 1 |
|   | 8700581 | MAINTENANCE KIT      | 1 |
|   |         | INCLUDES ITEMS 2,3,8 |   |

---





← FRONT OF MACHINE



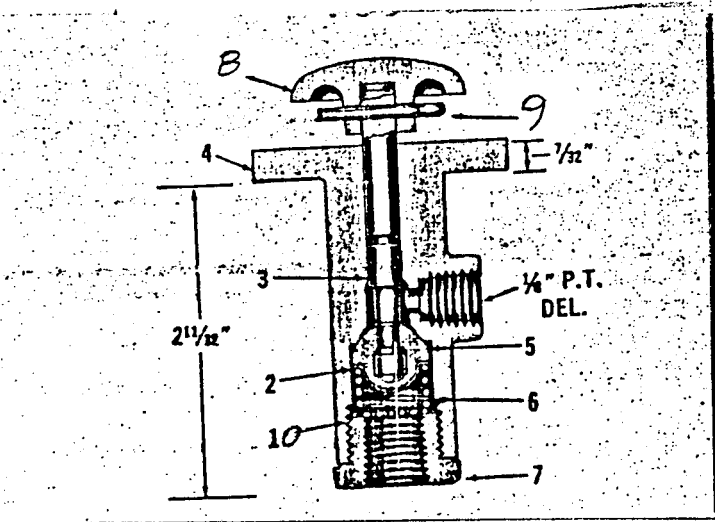
① INSTALLATION

|  |  |   |                                 |
|--|--|---|---------------------------------|
| <p>TOLERANCES</p> <p>UNLESS OTHERWISE SPECIFIED</p> <p>FRACTIONS +/-</p> <p>3 PLACE DECIMALS +/-</p> <p>2 PLACE DECIMALS +/-</p> <p>1 PLACE DECIMALS +/-</p> <p>ANGLES</p> <p>SEE SWINGMASTER SPECIFICATION</p> <p>G-1 FOR TOLERANCES NOT SPECIFIED</p> <p>DIMENSIONS ARE IN INCHES</p> <p>DO NOT SCALE DRAWING</p> <p>SCALE: NONE</p> |  | <p><b>SWINGMASTER CORPORATION</b></p> <p>11415 MELROSE AVENUE<br/>FRANKLIN PARK, ILLINOIS 60131</p> |                                 |
|  |  | <p>AIR HORN INSTALLATION</p>  |                                 |
|  |  | <p>MODEL 361</p>  |                                 |
|  |  | <p>DRAWN BY: R.O.</p> <p>DATE: 11-25-88</p>   | <p>DRAWING NO.</p> <p>H-176</p> |

|                       |                       |       |
|-----------------------|-----------------------|-------|
| MACHINE               | SECTION               | 18    |
| -----                 | -----                 | ----- |
| MODEL 361 SWINGLOADER | COMPRESSED AIR SYSTEM |       |
| -----                 | -----                 | ----- |

|          |                       |
|----------|-----------------------|
| ASSEMBLY | DESCRIPTION           |
| NUMBER   | -----                 |
| 1802221  | AIR HORN INSTALLATION |
| -----    | -----                 |

| ITEM PART | NO.     | DESCRIPTION                            | QTY. |
|-----------|---------|--|------|
|           |         |  | USED |
| 2         | 1800290 | DUAL AIR HORN - INCLUDES ITEMS 2a + 2b | 1    |
| 2a        | 8700896 | SMALL TRUMPET 10" LONG - NOT SHOWN     | 1    |
| 2b        | 8700897 | BIG TRUMPET 12.5" LONG - NOT SHOWN     | 1    |
| 3         | 1800144 | HORN BUTTON                            | 1    |
| 4         | 1800437 | H.H.C.S. 1/4-20 X 1" LONG              | 2    |
| 5         | 1800510 | HEX NUT 1/4-20                         | 2    |
| 6         | 1800567 | 1/4" LOCK WASHER                       | 2    |
| 7         | 1800443 | H.H.C.S. 5/16-18 X 1" LONG             | 1    |
| 8         | 1800512 | HEX NUT 5/16-18                        | 1    |
| 9         | 1800074 | 5/16" LOCK WASHER                      | 1    |



① ASSEMBLY

---

SWINGMASTER CORPORATION

PARTS BOOK

---

MACHINE

SECTION

18

-----  
MODEL 361 SWINGLOADER

-----  
COMPRESSED AIR SYSTEM  
-----

-----  
ASSEMBLY  
NUMBER

DESCRIPTION

-----  
1800144

HORN BUTTON ASSEMBLY  
-----

ITEM PART

QTY.

NO. NUMBER DESCRIPTION

USED

|    |         |                |   |
|----|---------|----------------|---|
| 2  | 8700595 | SPRING SEAT    | 1 |
| 3  | 8700596 | STEM           | 1 |
| 4  | 8700625 | BODY           | 1 |
| 5  | 8700626 | INLET VALVE    | 1 |
| 6  | 8700627 | SPRING         | 1 |
| 7  | 8700528 | CAP            | 1 |
| 8  | 8700629 | BUTTON         | 1 |
| 9  | 8700630 | COTTER PIN     | 1 |
| 10 | 8700631 | STRAINER PLATE | 1 |

---

---

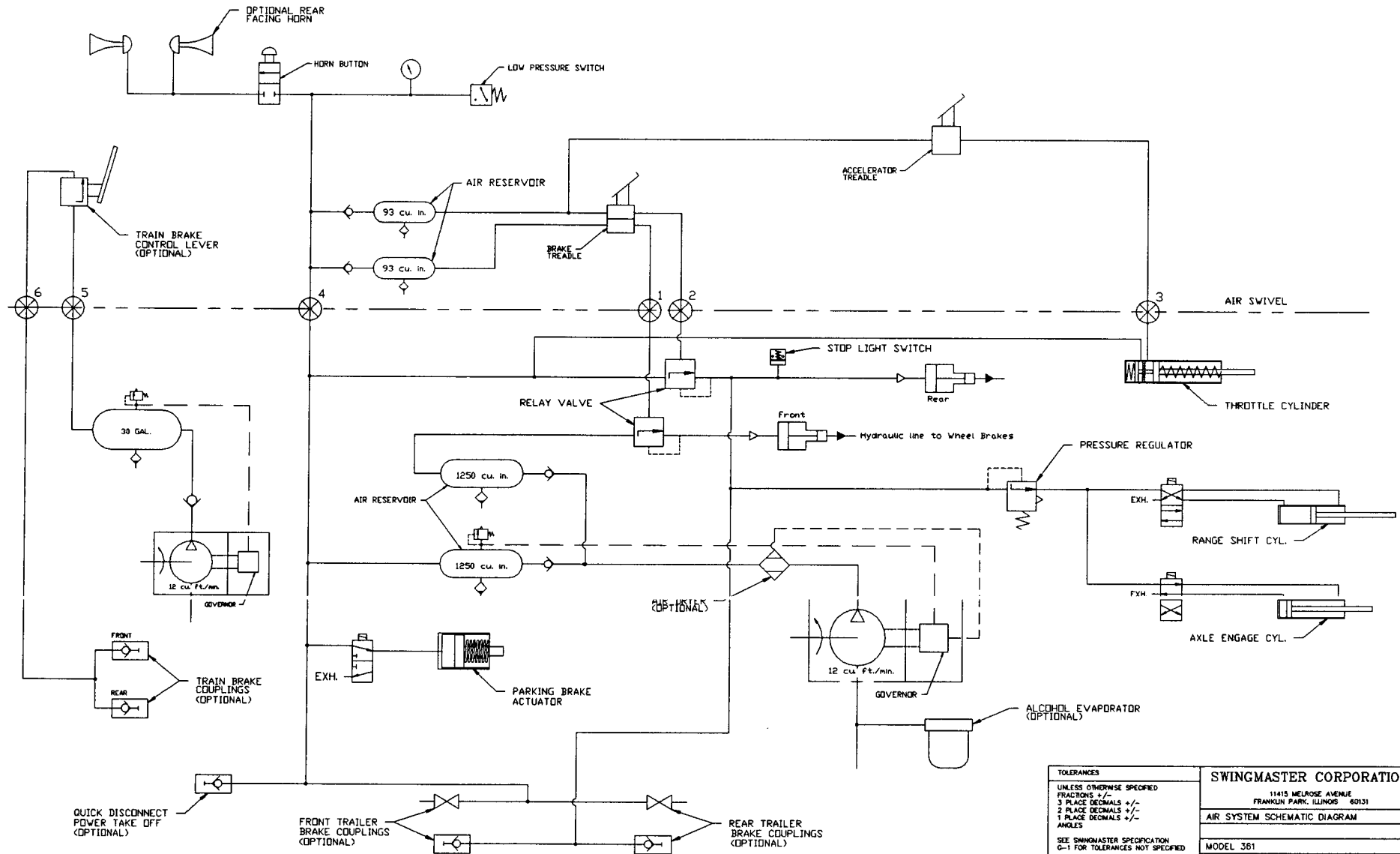
SWINGMASTER CORPORATION

11415 MELROSE AVENUE

FRANKLIN PARK, ILLINOIS 60131

TELEPHONE: (847) 451-1224

---



**TOLERANCES**  
 UNLESS OTHERWISE SPECIFIED  
 FRACTIONS +/-  
 3 PLACE DECIMALS +/-  
 2 PLACE DECIMALS +/-  
 1 PLACE DECIMALS +/-  
 ANGLES  
 SEE SWINGMASTER SPECIFICATION  
 G-1 FOR TOLERANCES NOT SPECIFIED  
 DIMENSIONS ARE IN INCHES  
 DO NOT SCALE DRAWING  
 SCALE:

|   |             |
|---|-------------|
| <b>SWINGMASTER CORPORATION</b>                        |             |
| 11415 MELROSE AVENUE<br>FRANKLIN PARK, ILLINOIS 60131 |             |
| <b>AIR SYSTEM SCHEMATIC DIAGRAM</b>                   |             |
| MODEL 361   |             |
| DRAWN BY: B.V.  | DRAWING NO. |
| DATE: 8-2-88  | D-170       |