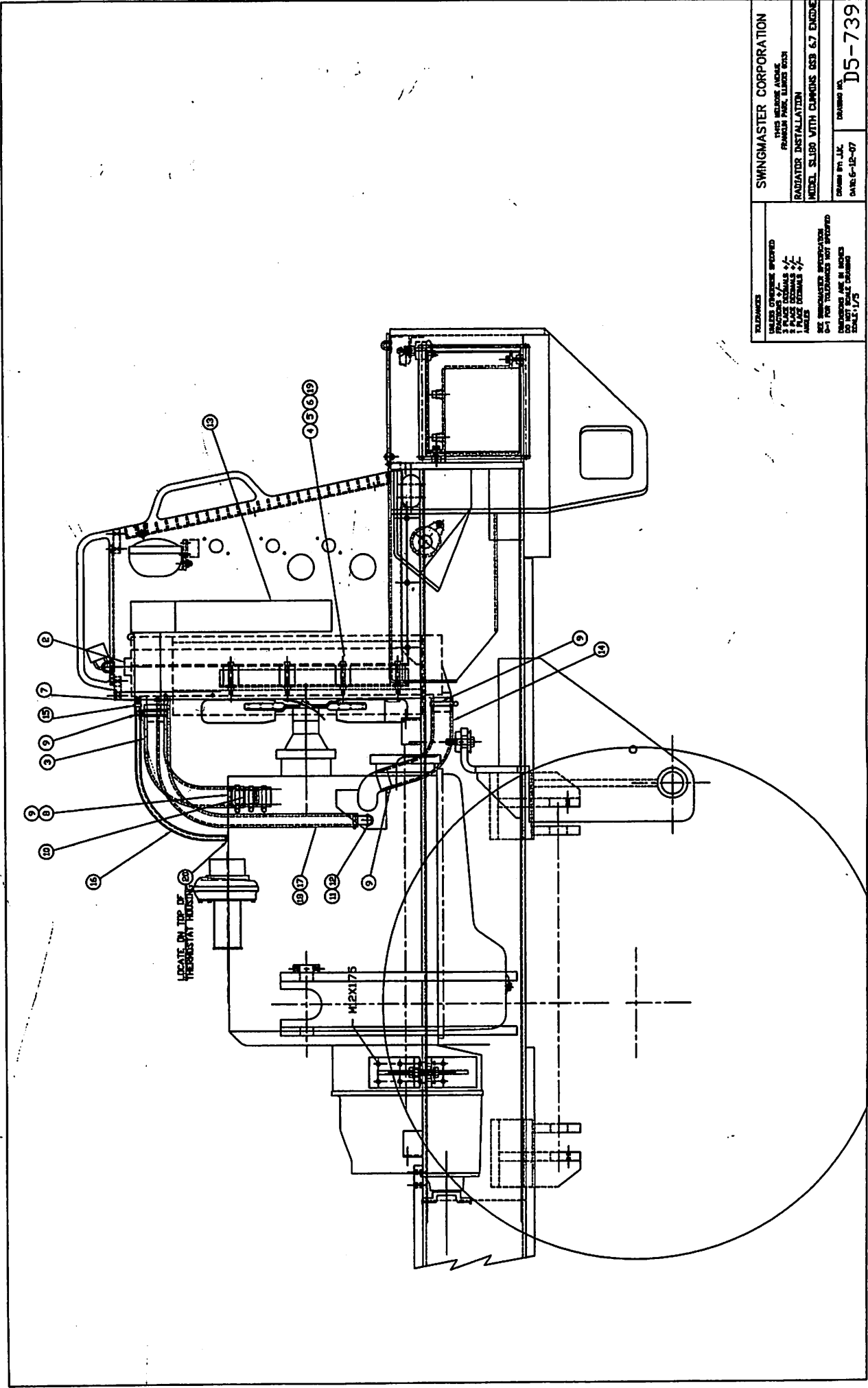




SWINGMASTER

SECTION L

COOLING  
SYSTEM



SWINGMASTER CORPORATION  
 1745 WILSON AVENUE  
 FARMER HILL, ILLINOIS 62531  
 RADIATOR INSTALLATION  
 MODEL SL180 WITH CLUNKUS QSB 6.7 ENGINE  
 DRAWN BY J.J.C.  
 DATE 6-18-07

DIMENSIONS UNLESS OTHERWISE SPECIFIED  
 3 PLACE DECIMALS +/-  
 1 PLACE DECIMALS +/-  
 ANGLES  
 SEE SWINGMASTER SPECIFICATION  
 DIMENSIONS ARE IN INCHES  
 SCALE: 1/2" = 1"

D5-739

MACHINE

SECTION

1

MODEL SL180-13 SWINGLOADER

COOLING SYSTEM

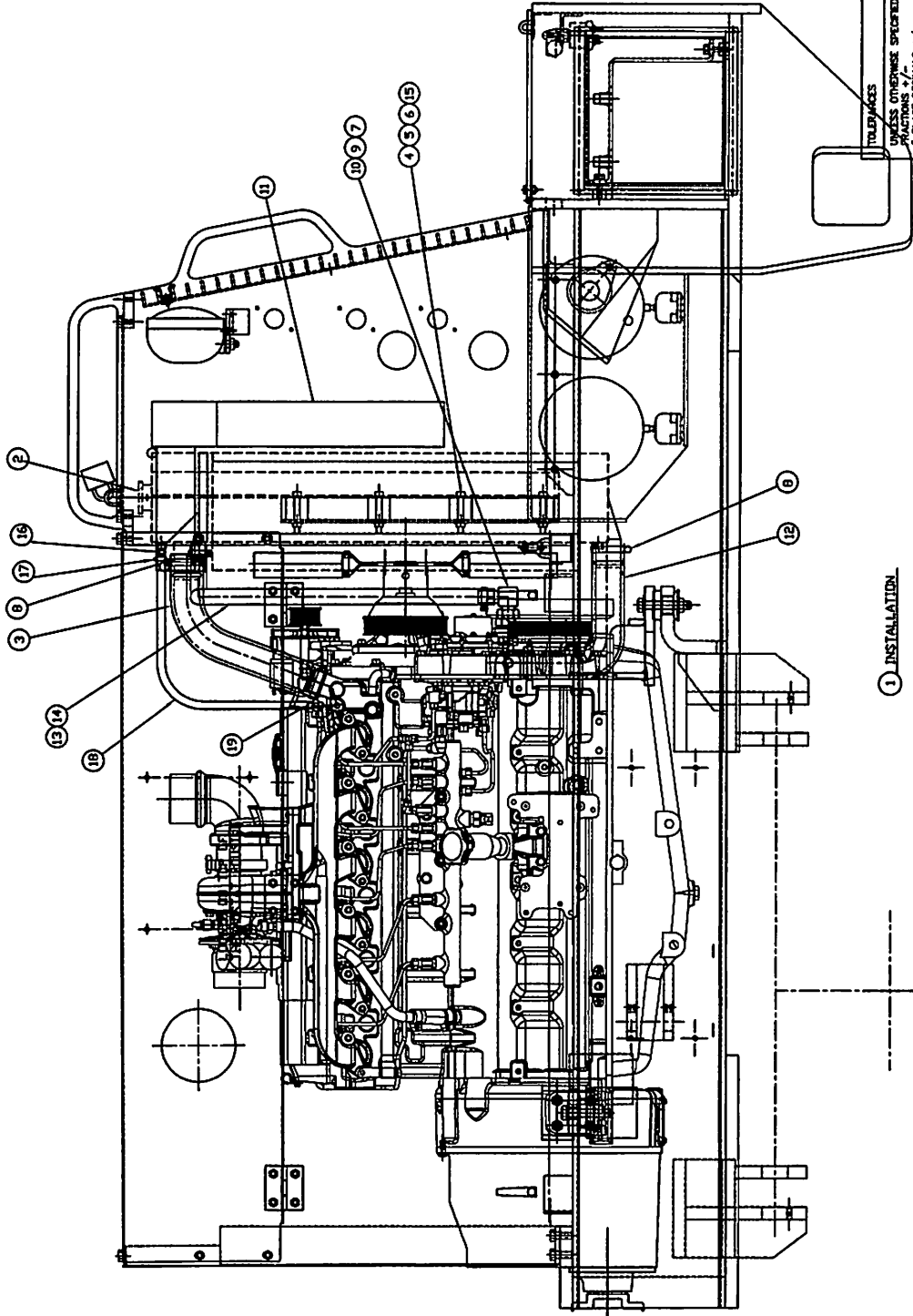
ASSEMBLY NUMBER		DESCRIPTION	
1806723		RADIATOR INSTALLATION	
ITEM NO.	PART NUMBER	DESCRIPTION	QTY. USED
2	1805598	RADIATOR CAP - 10 LBS	1
3	1805637	RAD. HOSE	1
4	1800463	H.H.C.S. 3/8-16 X 3 1/2" LONG	8
5	1800515	ESNA HEX NUT 3/8-16	12
6	1800552	3/8" FLAT WASHER	12
7	1806123	HOSE BEAD TO MALE PIPE	1
8	1806124	HOSE ADAPTOR	1
9	1800693	2 1/2" HOSE CLAMP	6
10	1806722	RAD. HOSE - 1.75" X 3" LG.	1
11	1802876	90 DEGREE PIPE ELBOW - 1/2-M TO 3/4	1
12	1806126	HOSE BARB TO MALE PIPE	1
13	1806273	RADIATOR W/ CAC.	1
14	1800322	RADIATOR HOSE 2" I.D. x 18" LG.	1
15	1806131	HOSE CLAMP	2
16	1806132	HOSE 3/8"ID. / (IN)	40
17	1802802	FC-350-16 BULK HOSE / (IN)	38
18	1805642	HOSE CLAMP	2
19	1801291	RUBBER MOUNT	8
20	1806133	HOSE BEAD TO MALE PIPE	1

SWINGMASTER CORPORATION

11415 MELROSE AVENUE

FRANKLIN PARK, ILLINOIS 60131

TEL: (847) 451-1224



TOLERANCES  
 UNLESS OTHERWISE SPECIFIED  
 ALL DIMENSIONS IN INCHES  
 3 PLACE DECIMALS +/-  
 2 PLACE DECIMALS +/-  
 1 PLACE DECIMALS +/-  
 ANGLES

SEE SWINGMASTER SPECIFICATION  
 0-1 FOR TOLERANCES NOT SPECIFIED  
 DIMENSIONS ARE IN INCHES  
 DO NOT SCALE DRAWING  
 SCALE: 1/6

**SWINGMASTER CORPORATION**  
 14145 WILCOX AVENUE  
 FRANKLIN PARK, ILLINOIS 60131

**RADIATOR INSTALLATION**  
 WITH J.D. PE6068HF285-175 DIESEL ENG.  
 MODEL 181TCHD

DRAWN BY: J.K.      DRAWING NO.  
 DATE: 9-4-08      **D3-723**

---

MACHINE	SECTION	1
MODEL SL180-13 SWINGLOADER	COOLING SYSTEM	

---

ASSEMBLY NUMBER	DESCRIPTION
-----	-----
1806859	RADIATOR INSTALLATION

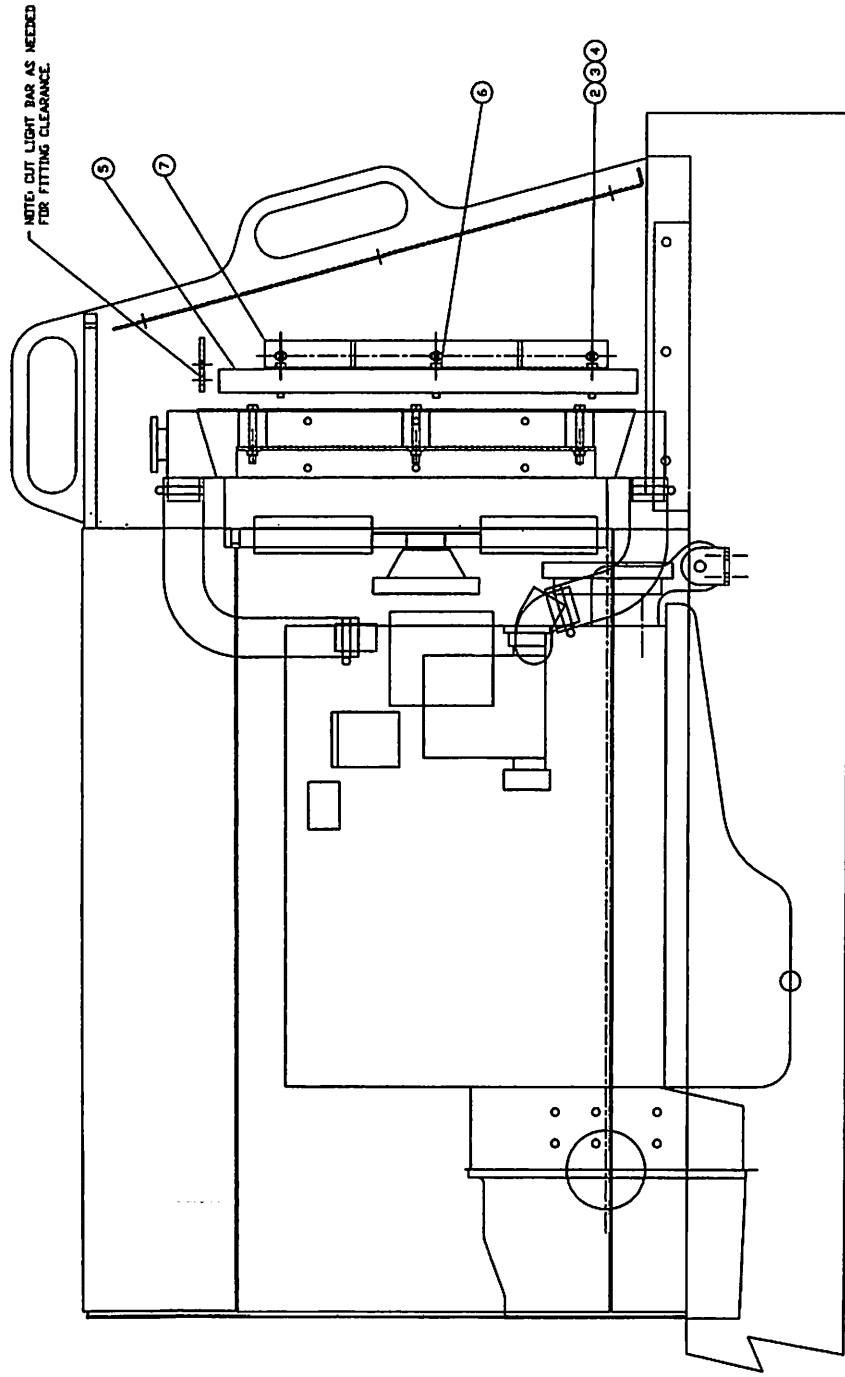
ITEM NO.	PART NUMBER	DESCRIPTION	QTY USED
----	-----	-----	-----
2	1805598	RADIATOR CAP - 10 LBS	1
3	1805637	RAD. HOSE	1
4	1800463	H.H.C.S. 3/8-16 X 3 1/2" LONG	8
5	1800515	ESNA HEX NUT 3/8-16	8
6	1800552	3/8" FLAT WASHER	12
7	1806361	HOSE BEAD TO MALE PIPE 90	1
8	1800693	2 1/2" HOSE CLAMP	4
9	1806362	PIPE ADAPTER	1
10	1806363	PIPE REDUCER	1
11	1806273	RADIATOR W/ CAC.	1
12	1805639	RAD. HOSE	1
13	1802802	FC-350-16 BULK HOSE / (IN)	24
14	1805642	HOSE CLAMP	2
15	1806820	RUBBER MOUNT - 1.75"L	8
16	1806123	HOSE BEAD TO MALE PIPE	1
17	1806131	HOSE CLAMP	2
18	1806132	HOSE 3/8"ID. / (IN)	32
19	1806133	HOSE BEAD TO MALE PIPE	1
20			0

---

SWINGMASTER CORPORATION  
 11415 MELROSE AVENUE  
 FRANKLIN PARK, ILLINOIS 60131

TEL: (847) 451-1224

FRONT OF MACHINE



① INSTALLATION

TOLERANCES  
ALL DIMENSIONS UNLESS SPECIFIED  
FRACTIONS 1/16 INCHES  
3 PLACE DECIMALS ± 0.001  
2 PLACE DECIMALS ± 0.005  
1 PLACE DECIMALS ± 0.015  
ANGLES  
SEE SWINGMASTER SPECIFICATION  
G-1 FOR TOLERANCES NOT SPECIFIED  
DIMENSIONS ARE IN INCHES  
DRAWING SCALE: 1/4"

SWINGMASTER CORPORATION  
11415 MILROSE AVENUE  
FRANKLIN PARK, ILLINOIS 60151  
TRANSMISSION COOLER INSTALLATION  
FOR CUMMINS 6BSL9 DIESEL ENGINE  
MODEL 1B1  
DRAWN BY: R.D.  
DATE: 4-4-90  
DRAWING NO. **D1-323**

MACHINE

SECTION

1

MODEL SL180-13 SWINGLOADER

COOLING SYSTEM

ASSEMBLY  
NUMBER

DESCRIPTION

1803479 TRANSMISSION OIL COOLER INSTALLATION

ITEM  
NO.PART  
NUMBER

DESCRIPTION

QTY  
USED

2	1800443	H.H.C.S. 5/16-18 X 1" LONG	6
3	1800550	5/16" FLAT WASHER	6
4	1800074	5/16" LOCK WASHER	6
5	1803167	TRANSMISSION COOLER	1
6	1803168	MOUNTING PLUG KIT	3
7	1803169	TRANSMISSION COOLER MOUNTING BRACKET	2

SWINGMASTER CORPORATION

11415 MELROSE AVENUE

FRANKLIN PARK, ILLINOIS 60131

TEL: (847) 451-1224