



SECTION P
COUNTER WEIGHT

SWINGMASTER CORPORATION

PARTS BOOK

MACHINE

SECTION

MODEL 361 SWINGLOADER

COUNTER WEIGHT

SECTION DESCRIPTION

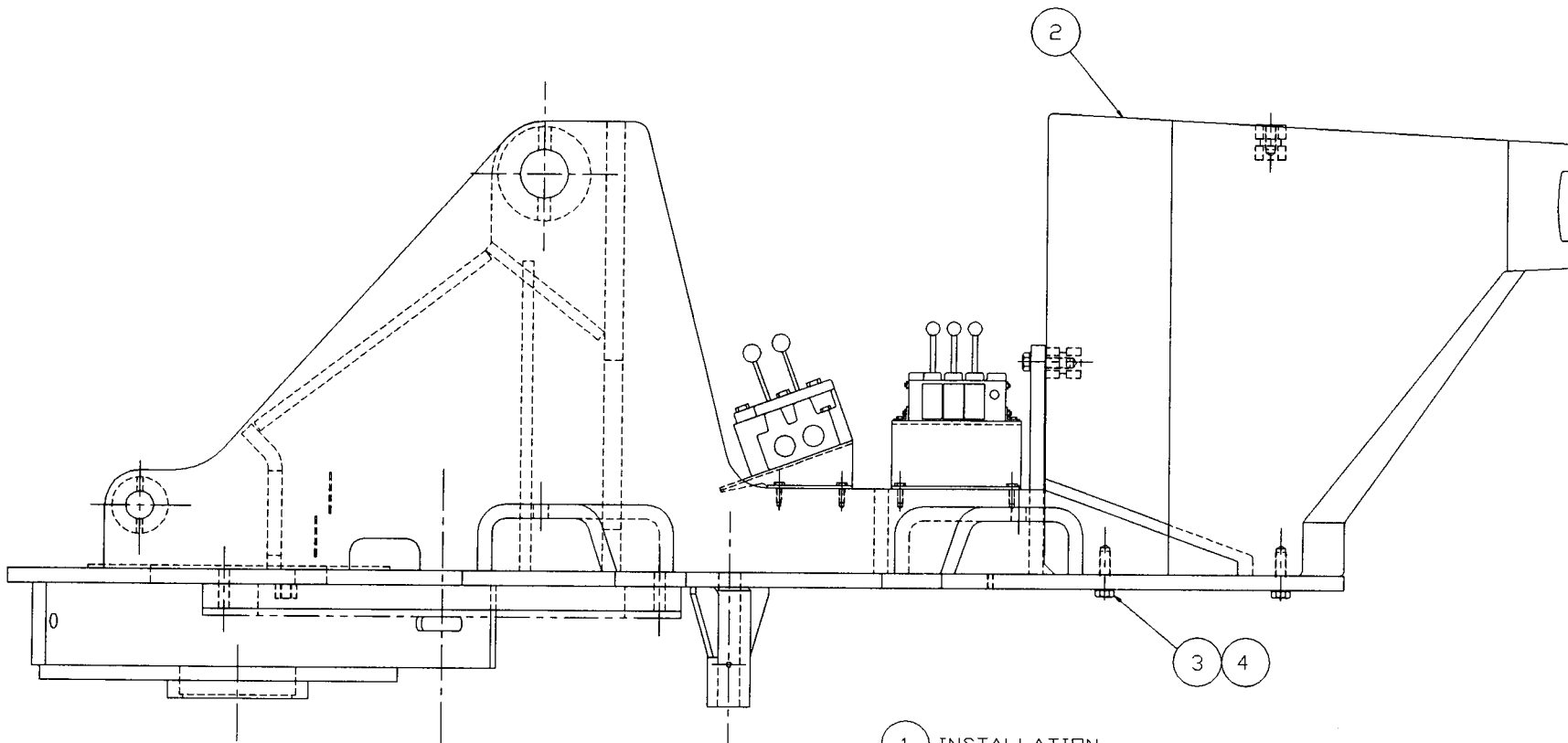
COUNTER WEIGHT INSTALLATION

SWINGMASTER CORPORATION

11415 MELROSE AVENUE

FRANKLIN PARK, ILLINOIS 60131

TELEPHONE: (847) 451-1224



1 INSTALLATION

| | | |
|---|--|-----------------------|
| TOLERANCES UNLESS OTHERWISE SPECIFIED FRACTIONS +/- 3 PLACE DECIMALS +/- 2 PLACE DECIMALS +/- 1 PLACE DECIMALS +/- ANGLES | SWINGMASTER CORPORATION 11415 MELROSE AVENUE FRANKLIN PARK, ILLINOIS 60131 | |
| | COUNTER WEIGHT INSTALLATION FOR MODEL 361 | |
| SEE SWINGMASTER SPECIFICATION C-1 FOR TOLERANCES NOT SPECIFIED | DRAWN BY: J.K. DATE: 3-30-89 | DRAWING NO. D1-247 |

SWINGMASTER CORPORATION

PARTS BOOK

MACHINE

SECTION 16

MODEL 361 SWINGLOADER

COUNTER WEIGHT

ASSEMBLY
NUMBER

DESCRIPTION

1802751

COUNTER WEIGHT INSTALLATION

ITEM PART

NO. NUMBER DESCRIPTION

QTY.

USED

| | | | |
|---|---------|-------------------------------|------|
| 2 | 1802752 | COUNTER WEIGHT | 1.00 |
| 3 | 1800481 | H.H.C.S. 3/4-10 X 2 3/4" LONG | 9.00 |
| 4 | 1800572 | 3/4" LOCK WASHER | 9.00 |

SWINGMASTER CORPORATION

11415 MELROSE AVENUE

FRANKLIN PARK, ILLINOIS 60131

TELEPHONE: (847) 451-1224



SECTION Q
PAINT AND MARKINGS

SWINGMASTER CORPORATION

PARTS BOOK

MACHINE

SECTION

MODEL 361 SWINGLOADER

PAINT AND MARKINGS

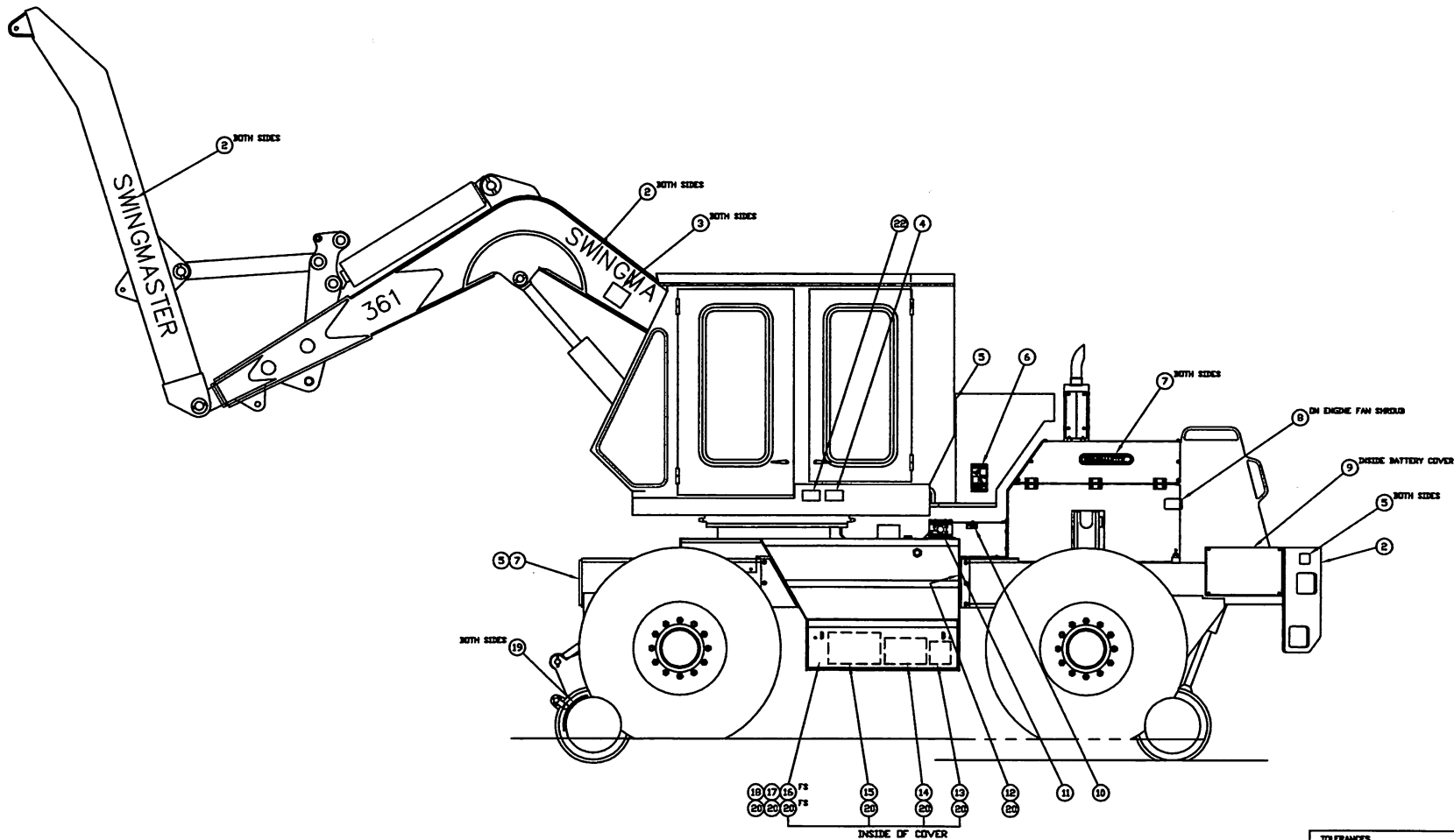
DESCRIPTION

MARKINGS INSTALLATION

LOAD RATING & OPERATING INSTRUCTION INSTALLATION

SWINGMASTER CORPORATION
11415 MELROSE AVENUE
FRANKLIN PARK, ILLINOIS 60131

TELEPHONE: (847) 451-1224



① INSTALLATION

TOLERANCES
 UNLESS OTHERWISE SPECIFIED
 FRACTIONS +/-
 3 PLACE DECIMALS +/-
 2 PLACE DECIMALS +/-
 1 PLACE DECIMALS +/-
 ANGLES

SEE SWINGMASTER SPECIFICATION
 0-1 FOR TOLERANCES NOT SPECIFIED

DIMENSIONS ARE IN INCHES
 DO NOT SCALE DRAWING
 SCALE:

| | |
|---|-------------|
| SWINGMASTER CORPORATION | |
| 11415 MELROSE AVENUE FRANKLIN PARK, ILLINOIS 60131 | |
| MARKINGS INSTALLATION | |
| MODEL 361 | |
| DRAWN BY: J.V. | DRAWING NO. |
| DATE: 4-24-69 | D-283 |

REVISION
1

MACHINE

SECTION

17

MODEL 361 SWINGLOADER

PAINT AND MARKING

ASSEMBLY
NUMBER

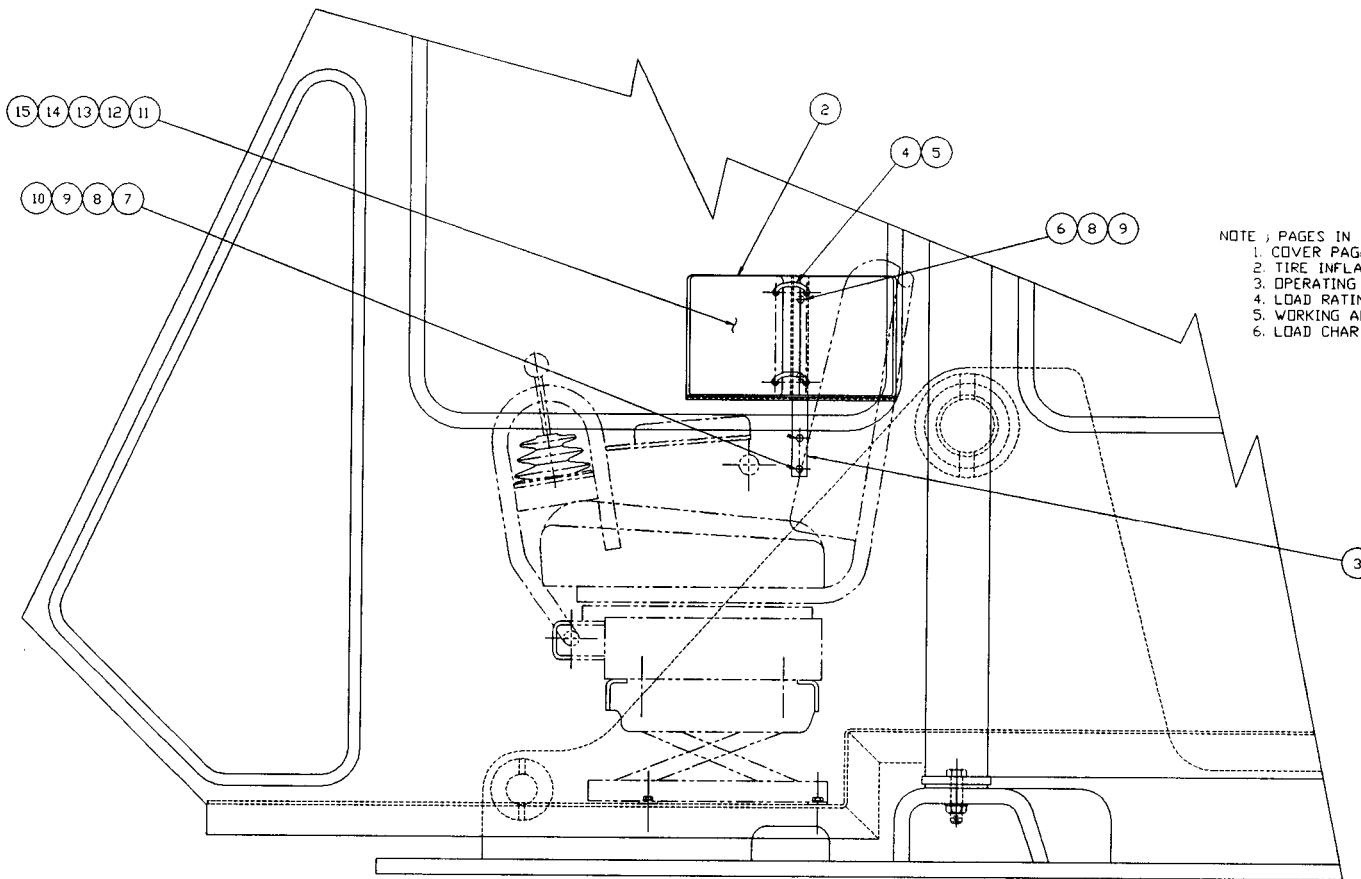
DESCRIPTION

1802826 MARKINGS INSTALLATION

| ITEM NO. | PART NUMBER | DESCRIPTION | QTY USED |
|----------|-------------|--|----------|
| 2 | 1802827 | SWINGMASTER EMBLEM | 6 |
| 3 | 1801051 | LABEL- DANGER SIGN | 2 |
| 4 | 1801313 | CAUTION PLATE - (USE BOTH HANDS) | 1 |
| 5 | 1801306 | WARNING PLATE - (NO RIDING) | 4 |
| 6 | 1802828 | DANGER PLATE - SWINGING UPPER | 2 |
| 7 | 1801389 | LABEL-SWINGMASTER | 3 |
| 8 | 1801308 | WARNING PLATE - (MOVING BELTS) | 2 |
| 9 | 1801311 | WARNING PLATE - (BATTERY) | 1 |
| 10 | 1801063 | LABEL- TRANSMISSION OIL | 1 |
| 11 | 1801060 | LABEL- HYDRAULIC OIL RESERVOIR | 1 |
| 12 | 1801059 | IDENTIFICATION PLATE | 1 |
| 13 | 1801312 | LUBRICATION CHART | 1 |
| 14 | 1802392 | AIR SYSTEM SCHEMATIC DIAGRAM | 1 |
| 15 | 1802393 | HYDRAULIC SYSTEM SCHEMATIC DIAGRAM | 1 |
| 16 | 1802391 | ELECTRIC SCHEMATIC DIAGRAM-DEUTZ BF6L913 | 1 |
| 17 | 1802829 | MACHINE LUBRICATION CHART - MODEL 361 | 1 |
| 18 | 1802830 | BOOM LUBRICATION CHART - MODEL 361 | 1 |
| 19 | 1801050 | LABEL- DANGER PINCH POINTS | 2 |
| 20 | 1800845 | 1/8" POP RIVET | 32 |
| 21 | 1801061 | LABEL- DIESEL FUEL | 2 |
| 22 | 1804177 | NAME PLATE - NOTICE-USE 2ND GEAR | 1 |

SWINGMASTER CORPORATION
11415 MELROSE AVENUE
FRANKLIN PARK, ILLINOIS 60131

TEL: (847) 451-1224



NOTE ; PAGES IN ORDER AS FOLLO
 1. COVER PAGE
 2. TIRE INFLATION & ATTACHMENT WEIGHT CHART
 3. OPERATING RULES
 4. LOAD RATING INSTRUCTIONS & DEFINITIONS
 5. WORKING AREA DIAGRAM
 6. LOAD CHARTS

1 INSTALLATION

| | | | |
|----------------------------------|--|--------------------------------------|-------------|
| TOLERANCES | | SWINGMASTER CORPORATION | |
| UNLESS OTHERWISE SPECIFIED | | 11415 MELROSE AVENUE | |
| FRACTIONS +/- | | FRANKLIN PARK, ILLINOIS 60131 | |
| 3 PLACE DECIMALS +/- | | LOAD RATING & OPERATING INSTRUCTIONS | |
| 2 PLACE DECIMALS +/- | | INSTALLATION | |
| 1 PLACE DECIMALS +/- | | FOR MODEL 361 | |
| ANGLES | | DRAWN BY: J.K. | DRAWING NO. |
| SEE SWINGMASTER SPECIFICATION | | DATE: 12-5-88 | D-232 |
| G-1 FOR TOLERANCES NOT SPECIFIED | | | |
| DIMENSIONS ARE IN INCHES | | | |
| DO NOT SCALE DRAWING | | | |
| SCALE: 1/4 | | | |

MACHINE

SECTION 17

MODEL 361 SWINGLOADER

PAINT AND MARKING

ASSEMBLY
NUMBER

DESCRIPTION

1802239

LOAD RATING & OPERATING INSTRUCT. INSTL.

| ITEM NO. | PART NUMBER | DESCRIPTION | QTY. USED |
|----------|-------------|--|-----------|
| 2 | 1802240 | MOUNTING BRACKET WELDMENT | 1.00 |
| 3 | 1802754 | MOUNTING BAR | 1.00 |
| 4 | 1800678 | 1 5/8" MUFFLER CLAMP | 2.00 |
| 5 | 1800512 | HEX NUT 5/16-18 | 4.00 |
| 6 | 1800436 | H.H.C.S. 1/4-20 X 3/4" LONG | 2.00 |
| 7 | 1800439 | H.H.C.S. 1/4-20 X 1 1/2" LONG | 2.00 |
| 8 | 1800510 | HEX NUT 1/4-20 | 4.00 |
| 9 | 1800567 | 1/4" LOCK WASHER | 4.00 |
| 10 | 1800291 | STEEL PIPE COUPLING - 1/8" | 1.00 |
| 11 | 1802241 | OPERATING INSTRUCTIONS COVER PLATE | 1.00 |
| 12 | 1802242 | TIRE INFLATION & ATTACHMENT WEIGHT CHART | 1.00 |
| 13 | 1801367 | OPERATING RULES | 1.00 |
| 14 | 1802243 | LOAD RATING INSTRUCTS./WORK AREA DIAGRAM | 1.00 |
| 15 | 1801370 | LOAD RATING INSTRUCTIONS AND DEFINITION | 1.00 |