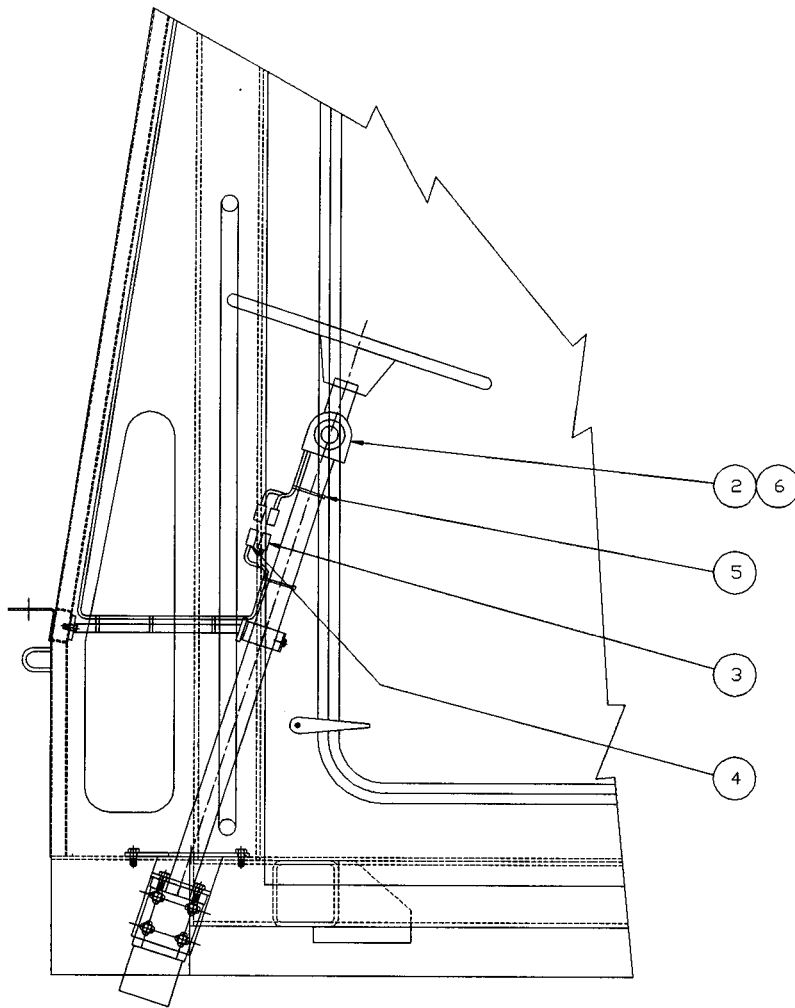


SECTION C

DRIVE
SYSTEM
CONTROLS



1 INSTALLATION

TOLERANCES
 UNLESS OTHERWISE SPECIFIED
 FRACTIONS +/-
 3 PLACE DECIMALS +/-
 2 PLACE DECIMALS +/-
 1 PLACE DECIMALS +/-
 ANGLES
 SEE SWINGMASTER SPECIFICATION
 G-1 FOR TOLERANCES NOT SPECIFIED
 DIMENSIONS ARE IN INCHES
 DO NOT SCALE DRAWING
 SCALE: 1=6

SWINGMASTER CORPORATION	
11415 MELROSE AVENUE FRANKLIN PARK, ILLINOIS 60131	
TRANSMISSION SHIFTER INSTALLATION	
MODEL 182 & SL180	
DRAWN BY: J.K.	DRAWING NO.
DATE: 5-8-90	C-228

MACHINE

SECTION

3

MODEL SL180 SWINGLOADER

DRIVE SYSTEM CONTROLS

ASSEMBLY
NUMBER

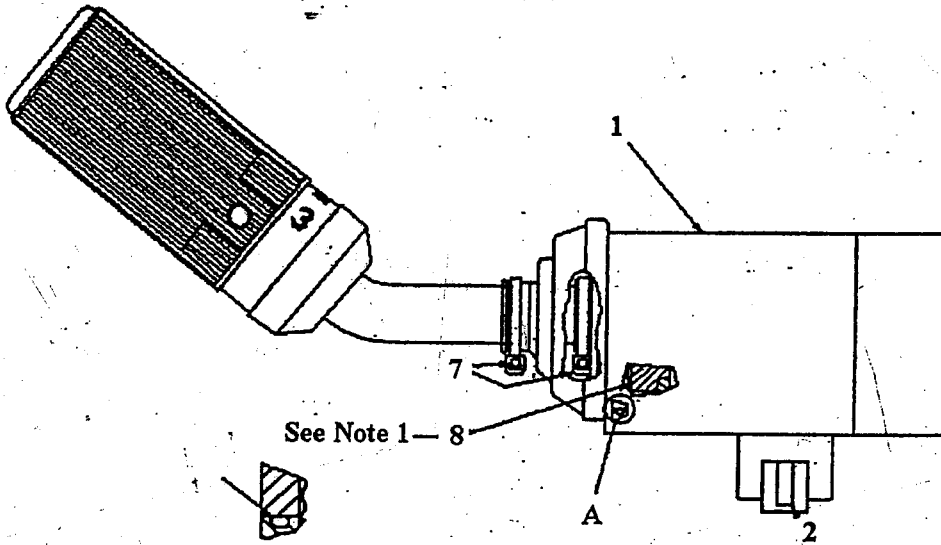
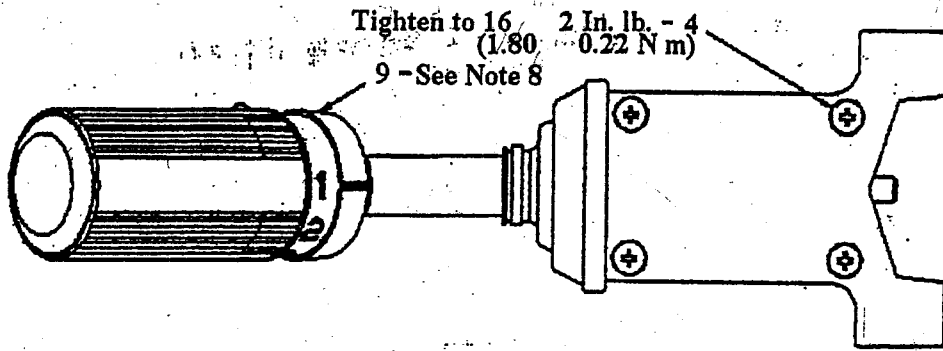
DESCRIPTION

1803571

TRANSMISSION SHIFTER INSTALLATION

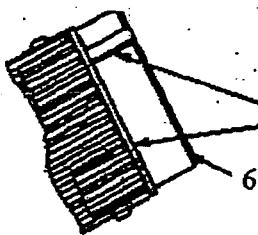
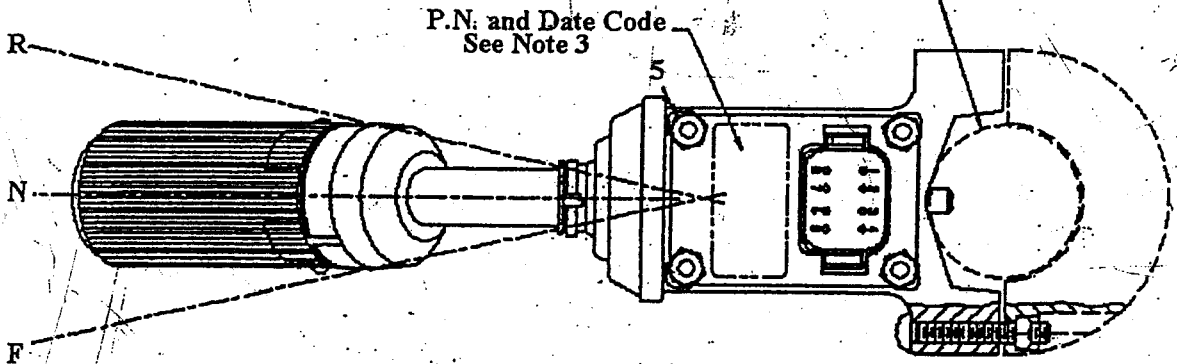
ITEM NO.	PART NUMBER	DESCRIPTION	QTY. USED
002	1802217	TRANSMISSION SHIFTER	1.00
003	1802218	1/4" SNAP-ON TERMINAL - MALE	4.00
004	1802223	1/4" SNAP-ON TERMINAL - FEMALE	3.00
005	1801074	1/16-2 TY-RAP CABLE TIE	5.00
006	1803538	TRANSMISSION SHIFTER MOUNTING HARDWARE	1.00

Parts Book
Shifter Assembly, LL-835-13



Detail A
Scale 2:1

Clamp Assy Part No.
LL-835-21 (Optional)



Position Decal Against These
Edges When Installing

Shifter Assembly, LL-835-13

Notes:

1. Apply item 8 to Item 2 prior to assembly.
2. 100% check for proper operation.
3. Hobbs/P/N and date code to be stamped in area shown. Letters .2± .03 high.
4. Torque requirement to change speeds to be 8.88± 2.6 In. Lb. (1.0± 0.3 N m)
5. Torque requirement to change directions to be 22 7 In. Lbs (2.5± 0.8 N m)
6. Torque requirement to disengage neutral detent 15 4.5 In. Lbs. (1.7± 0.5 N m)
7. Critical Characteristic. No Spc data required.
8. Rotate Knob to 1st speed. Center white line of collar on No. 1. Tighten set screw to 3.5± 0.5 In. Lbs. (0.40± 0.06 N m)
9. A. Mating connector -LL-6800-4
B. Connector Terminal -LL-6800-2
Optional Terminal -LL-6800-1
C. Connector wedge-LL-6800-5
D. Sealing plug -LL-6800-3

38

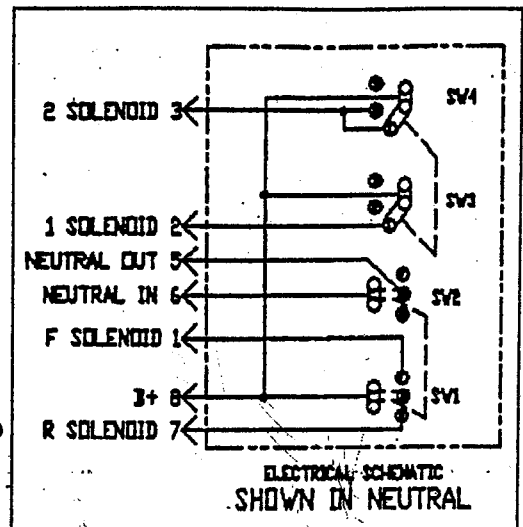
39

42

59

41

40

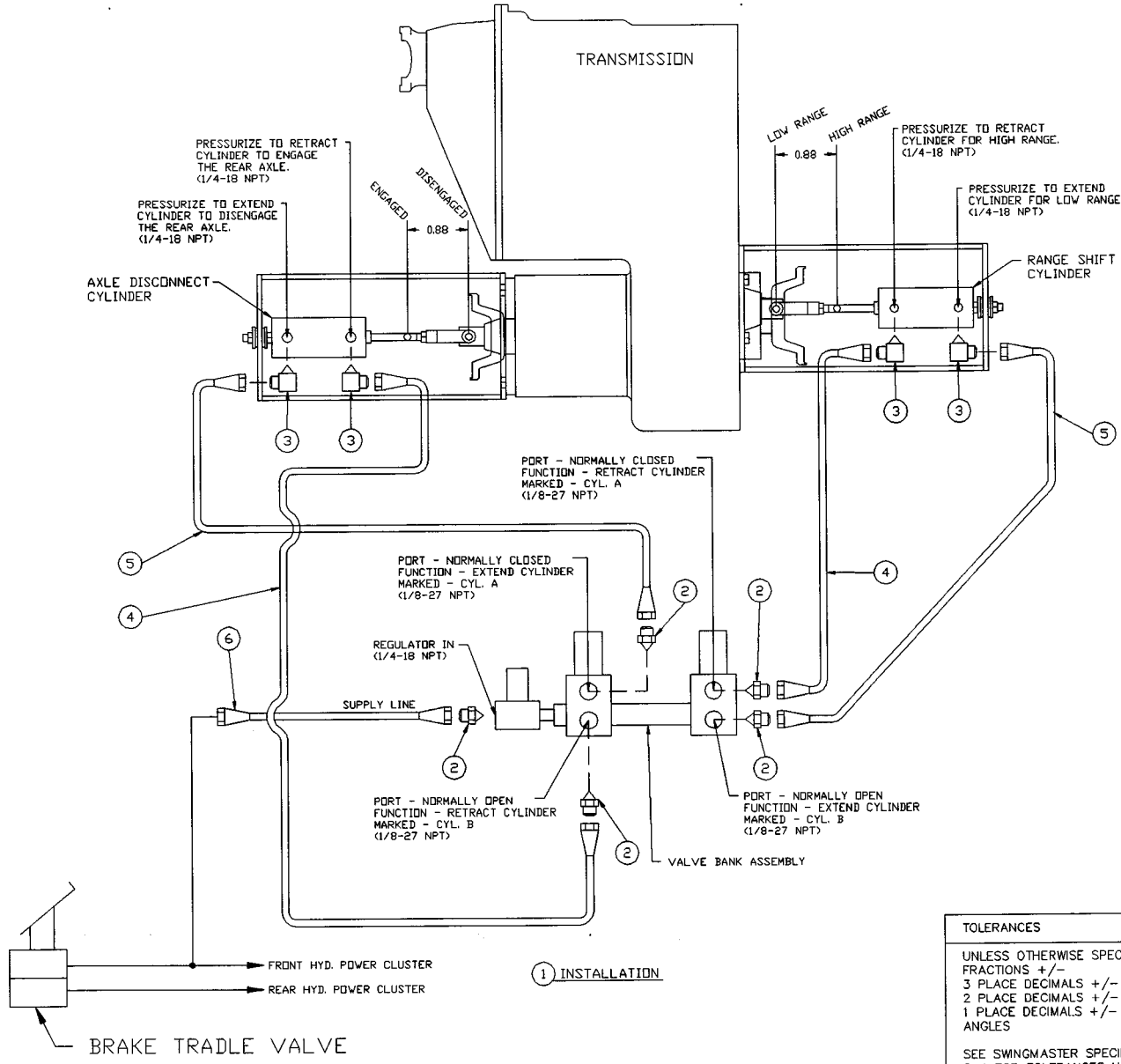


Legend

- F. Forward Position
N Neutral Position
R Reverse Position
1 First Gear Position
2 Second Gear Position
3 Third Gear Position
Sw1 Direction Selector Switch
Sw2 Neutral Switch
Sw3 Speed Selector Switch
Sw4 Speed Selector Switch

Item	Part Number	Description	Req'd
1	LL-835-23	Housing, handle & C.B. Assy	1
2	LL-835-18	Cover	1
3	LL-835-19	O-ring	1
4	LL-835-22	Screw, 8-32 x 1.75	4
5	LL-835-20	Nut, 8-32	4
6	LL-835-17	Decal, Indicator	1
7	LL-835-15	Locking cable tie	2
8	LL-835-14	Lubricant	A/R
9	LL-835-16	Set screw (M4 x 0.7)	1

FRONT OF MACHINE →



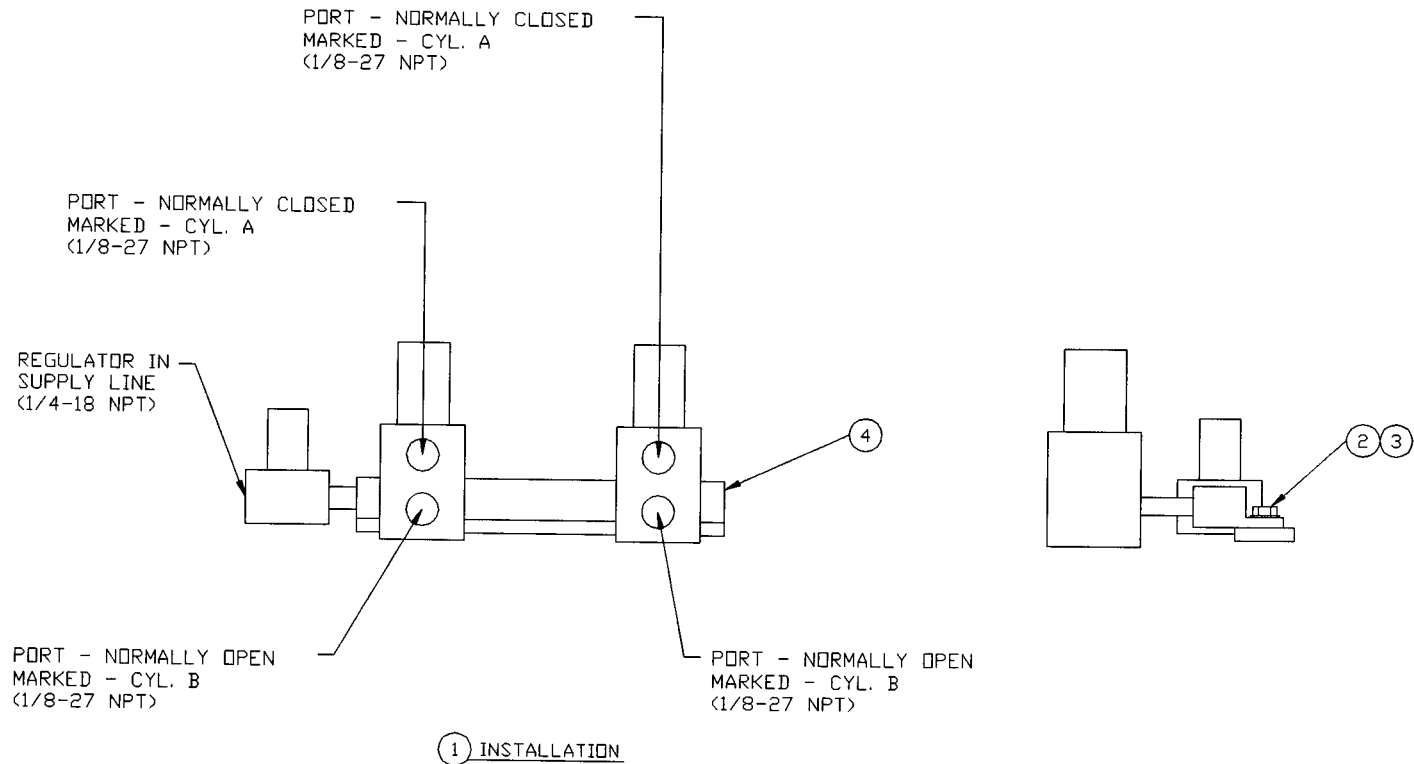
① INSTALLATION

<p>TOLERANCES</p> <p>UNLESS OTHERWISE SPECIFIED</p> <p>FRACTIONS +/-</p> <p>3 PLACE DECIMALS +/-</p> <p>2 PLACE DECIMALS +/-</p> <p>1 PLACE DECIMALS +/-</p> <p>ANGLES</p> <p>SEE SWINGMASTER SPECIFICATION</p> <p>G-1 FOR TOLERANCES NOT SPECIFIED</p> <p>DIMENSIONS ARE IN INCHES</p> <p>DO NOT SCALE DRAWING</p> <p>SCALE: NONE</p>		<p>SWINGMASTER CORPORATION</p> <p>11415 MELROSE AVENUE FRANKLIN PARK, ILLINOIS 60131</p>	
		<p>RANGE SHIFT AND AXLE DISCONNECT</p>	
		<p>LINES AND FITTINGS</p>	
		<p>MODEL SL180</p>	
<p>DRAWN BY: J.K.</p>		<p>DRAWING NO.</p>	
<p>DATE: 7-22-98</p>		<p>C1-136</p>	

MACHINE	SECTION	3
-----	-----	-----
MODEL SL180 SWINGLOADER	DRIVE SYSTEM CONTROLS	
-----	-----	-----

ASSEMBLY NUMBER	DESCRIPTION
-----	-----
1805778	RANGE SHIFT AND AXLE DISCONNECT L & F
-----	-----

ITEM NO.	PART NUMBER	DESCRIPTION	QTY. USED
-----	-----	-----	-----
002	1800750	STRAIGHT MALE 1/8 PIPE TO 1/4 TUBE	5.00
003	1800777	90 DEG MALE ELBOW 1/4 PIPE TO 1/4 TUBE	4.00
004	1802477	HOSE ASSEMBLY 1503-4	2.00
005	1802478	HOSE ASSEMBLY 1503-4	2.00
007	1805779	HOSE ASSEMBLY 1503-4	1.00
-----	-----	-----	-----



TOLERANCES		SWINGMASTER CORPORATION	
UNLESS OTHERWISE SPECIFIED		11415 MELROSE AVENUE	
FRACTIONS +/-		FRANKLIN PARK, ILLINOIS 60131	
3 PLACE DECIMALS +/-		VALVE BANK ASSEMBLY INSTALLATION	
2 PLACE DECIMALS +/-		MODEL 361 & SL180	
1 PLACE DECIMALS +/-		DRAWN BY: J.K.	
ANGLES		DATE: 1-23-89	
SEE SWINGMASTER SPECIFICATION		DRAWING NO.	
G-1 FOR TOLERANCES NOT SPECIFIED		H-182	
DIMENSIONS ARE IN INCHES			
DO NOT SCALE DRAWING			
SCALE: NONE			

SWINGMASTER CORPORATION

PARTS BOOK

MACHINE

SECTION

3

MODEL SL180 SWINGLOADER

DRIVE SYSTEM CONTROLS

ASSEMBLY
NUMBER

DESCRIPTION

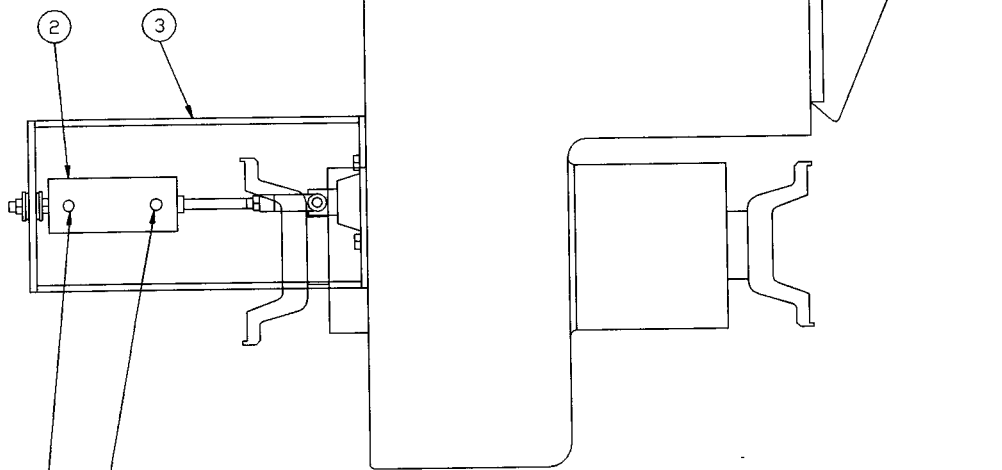
1802471

VALVE BANK ASSEMBLY INSTALLATION

ITEM NO.	PART NUMBER	DESCRIPTION	QTY. USED
002	1801430	H.H.C.S. 5/16-18 X 5/8" LONG	2.00
003	1800074	5/16" LOCK WASHER	2.00
004	1802472	VALVE BANK ASSEMBLY	1.00

← FRONT OF MACHINE

TRANSMISSION



— PRESSURIZE TO RETRACT CYLINDER FOR HIGH RANGE.

— PRESSURIZE TO EXTEND CYLINDER FOR LOW RANGE.

① INSTALLATION

TOLERANCES		SWINGMASTER CORPORATION	
UNLESS OTHERWISE SPECIFIED		11415 MELROSE AVENUE	
FRACTIONS +/-		FRANKLIN PARK, ILLINOIS 60131	
3 PLACE DECIMALS +/-		RANGE SHIFT CYLINDER INSTALLATION	
2 PLACE DECIMALS +/-		CLARK 28000 SERIES TRANSMISSION	
1 PLACE DECIMALS +/-		MODEL 361 & SL180	
ANGLES		DRAWN BY: J.K.	
SEE SWINGMASTER SPECIFICATION		DRAWING NO.	
G-1 FOR TOLERANCES NOT SPECIFIED		DATE: 11-18-88	
DIMENSIONS ARE IN INCHES		H-169	
DO NOT SCALE DRAWING			
SCALE 1/1=5			

MACHINE	SECTION	3
MODEL SL180 SWINGLOADER	DRIVE SYSTEM CONTROLS	

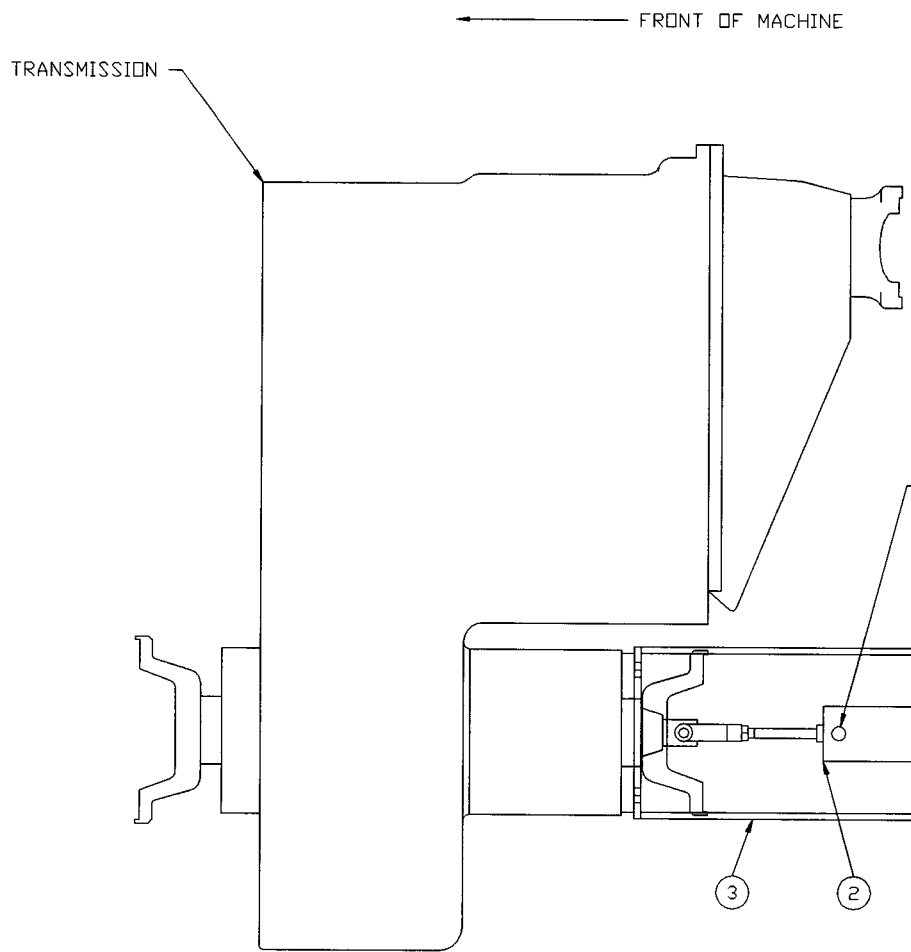
ASSEMBLY
NUMBER

DESCRIPTION

1802162

RANGE SHIFT CYLINDER INSTALLATION

ITEM NO.	PART NUMBER	DESCRIPTION	QTY. USED
002	1802165	PNUEMATIC CYLINDER-2" BORE X 7/8" STROKE	1.00
003	1802167	RANGE SHIFT CYLINDER MOUNTING BRACKET	1.00



ITEM	PART NO.	DESCRIPTION	QTY.
1	H-170	AXLE DISCONNECT CYLINDER INSTALLATION	1
2	P-127-3	PNEUMATIC CYLINDER - 2" BORE X 7/8" STROKE	1 *
3	P-127-4	AXLE DISCONNECT CYLINDER MOUNTING BRACKET	1

* - INCLUDES MOUNTING HARDWARE

① INSTALLATION

TOLERANCES
 UNLESS OTHERWISE SPECIFIED
 FRACTIONS +/-
 3 PLACE DECIMALS +/-
 2 PLACE DECIMALS +/-
 1 PLACE DECIMALS +/-
 ANGLES
 SEE SWINGMASTER SPECIFICATION
 G-1 FOR TOLERANCES NOT SPECIFIED
 DIMENSIONS ARE IN INCHES
 DO NOT SCALE DRAWING
 SCALE: 1=5

SWINGMASTER CORPORATION
 11415 MELROSE AVENUE
 FRANKLIN PARK, ILLINOIS 60131

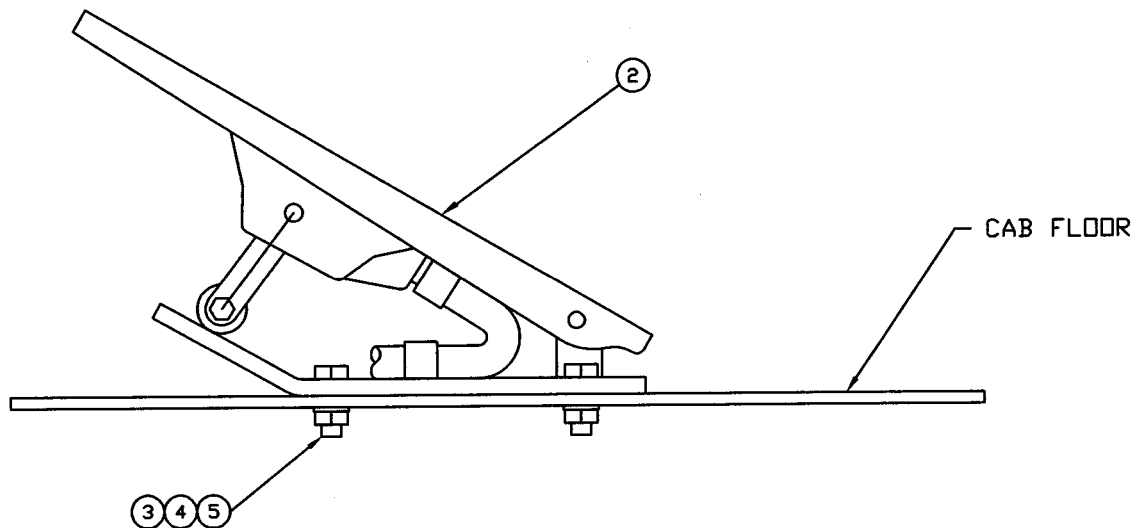
AXLE DISCONNECT CYLINDER INSTALLATION
 CLARK 28000 SERIES TRANSMISSION
 MODEL 361 & SL180

DRAWN BY: J.K. DRAWING NO.
 DATE: 11-18-88 H-170

MACHINE	SECTION	3
-----	-----	-----
MODEL SL180 SWINGLOADER	DRIVE SYSTEM CONTROLS	
-----	-----	-----

ASSEMBLY NUMBER	DESCRIPTION
-----	-----
1802163	AXLE DISCONNECT CYLINDER INSTALLATION
-----	-----

ITEM NO.	PART NUMBER	DESCRIPTION	QTY. USED
-----	-----	-----	-----
002	1802165	PNUEMATIC CYLINDER-2" BORE X 7/8" STROKE	1.00
003	1802166	AXLE DISCONNECT CYLINDER MOUNT. BRACKET	1.00
-----	-----	-----	-----



① INSTALLATION

TOLERANCES UNLESS OTHERWISE SPECIFIED FRACTIONS +/- +/- 3 PLACE DECIMALS +/- 2 PLACE DECIMALS +/- 1 PLACE DECIMALS +/- ANGLES		SWINGMASTER 11415 MELROSE AVENUE FRANKLIN PARK, ILLINOIS 60131 (847) 451-1224	
SEE SWINGMASTER SPECIFICATION G-1 FOR TOLERANCES NOT SPECIFIED		ELECTRONIC ACCELERATOR FOOT PEDAL INSTALLATION	
DIMENSIONS ARE IN INCHES DO NOT SCALE DRAWING SCALE: 1=2		WITH CUMMINS QSB 4.5 & 6.7 DIESEL ENG. DRAWN BY: J.K. DATE: 3-14-07	DRAWING NO. H3-171

MECHINE

SECTION

3

MODEL 181 SWINGLOADER

DRIVE SYSTEM CONTROLS

ASSEMBLY
NUMBER

DESCRIPTION

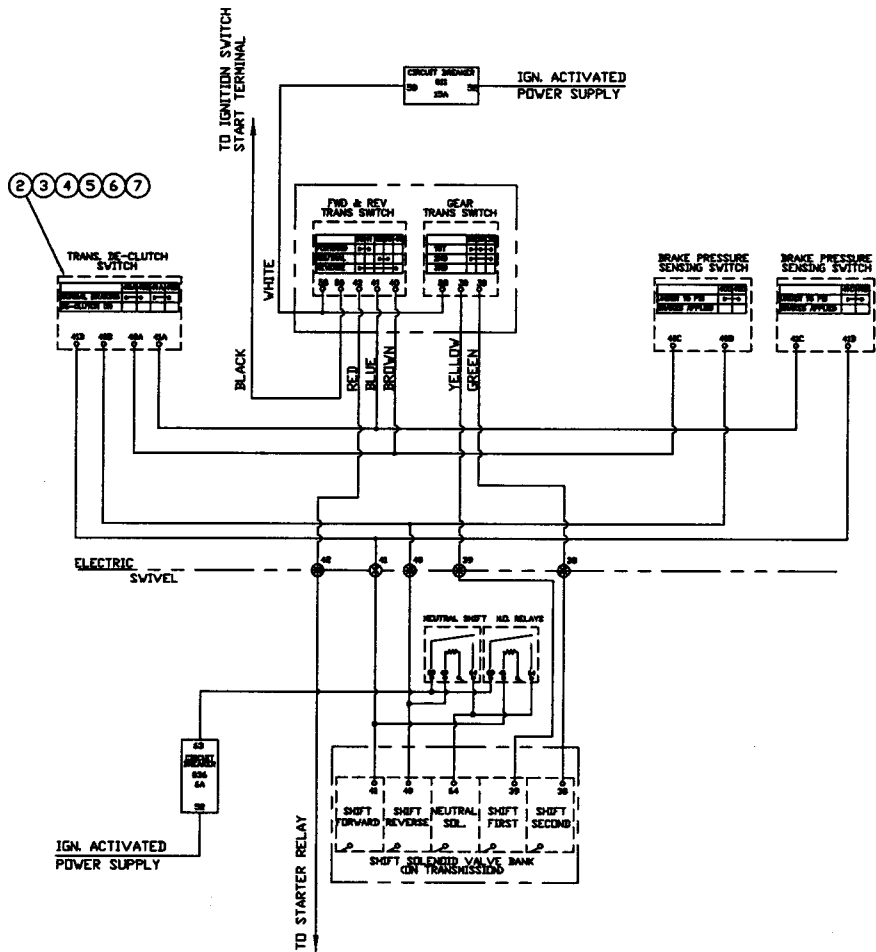
1806702

ELECTRONIC ACCEL. FOOT PEDAL INST'L

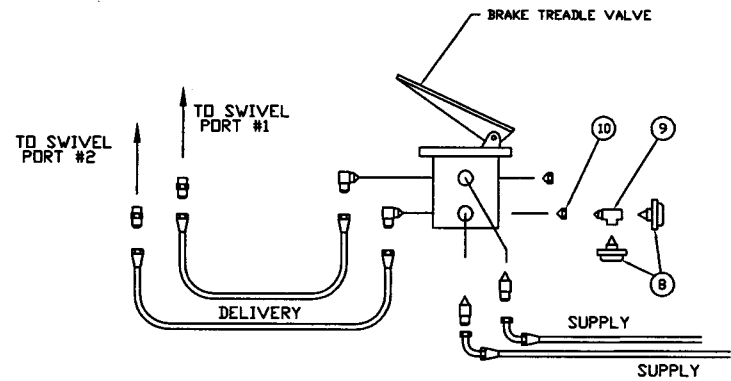
ITEM
NO.PART
NUMBER

DESCRIPTION

QTY
USED2
3
4
51806703
1800061
1800512
1800074ELECTRONIC ACCEL. FOOT PEDAL
H.H.C.S. 5/16-18 X 7/8" LONG
HEX NUT 5/16-18
5/16" LOCK WASHER1
3
3
3



1 INSTALLATION



TOLERANCES UNLESS OTHERWISE SPECIFIED FRACTIONS +/- 3 PLACE DECIMALS +/- 2 PLACE DECIMALS +/- 1 PLACE DECIMALS +/- ANGLES	SWINGMASTER CORPORATION 11415 MELROSE AVENUE FRANKLIN PARK, ILLINOIS 60131	
	TRANSMISSION DE-CLUTCH INSTALLATION	
SEE SWINGMASTER SPECIFICATION G-1 FOR TOLERANCES NOT SPECIFIED	MODEL 361	
DIMENSIONS ARE IN INCHES DO NOT SCALE DRAWING SCALE:	DRAWN BY: B.W. DATE: 4-10-89	DRAWING NO. C-164

MACHINE

SECTION

50

MODEL SL180-12 SWINGLOADER

MISCELLANEOUS

ASSEMBLY
NUMBER

DESCRIPTION

1802847 TRANSMISSION DE-CLUTCH INSTALLATION

ITEM
NO.PART
NUMBER

DESCRIPTION

QTY
USED

2	1802280	SWITCH - ON - ON (DOUBLE POLE)	1
3	1802848	SYMBOL - TRANSMISSION DE-CLUTCH	1
4	1800410	SOCKET HOUSING FOR SWITCH	1
5	1800412	SNAP-ON TERMINAL, FEMALE	6
6	1802849	NAME PLATE - TRANSMISSION DE-CLUTCH	1
7	1800845	1/8" POP RIVET	2
8	1802850	PRESSURE SENSING SWITCH (NORMALLY CLOSED)	2
9	1800911	1/8 PIPE SERVICE TEE M-F-F	1
10	1802851	PIPE REDUCER BUSHING - 3/8 TO 1/8	1
11	1801086	BULK 14 GA. WIRE / (FT)	0