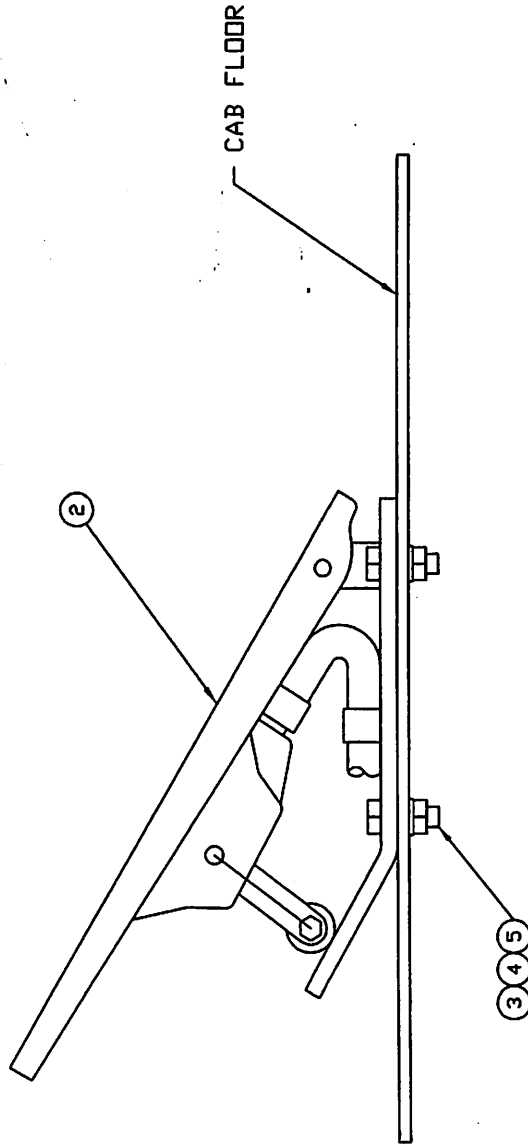




SWINGMASTER

SECTION C

DRIVE
SYSTEM
CONTROLS



① INSTALLATION

TOLERANCES

UNLESS OTHERWISE SPECIFIED
 FRACTIONS +/-
 3 PLACE DECIMALS +/-
 2 PLACE DECIMALS +/-
 1 PLACE DECIMALS +/-
 ANGLES

SEE SWINGMASTER SPECIFICATION
 G-1 FOR TOLERANCES NOT SPECIFIED
 DIMENSIONS ARE IN INCHES
 DO NOT SCALE DRAWING
 SCALE: 1"=2"

SWINGMASTER

11415 MELROSE AVENUE
 FRANKLIN PARK, ILLINOIS 60131
 (847) 451-1224

ELECTRONIC ACCELERATOR FOOT PEDAL INSTALLATION

WITH CUMMINS QSB 4.5 & 6.7 DIESEL ENG.

DRAWN BY: J.K. DRAWING NO.

DATE: 3-14-07

H3-171

MACHINE

SECTION

1

MODEL SL180-13 SWINGLOADER

DRIVE SYSTEM CONTROLS

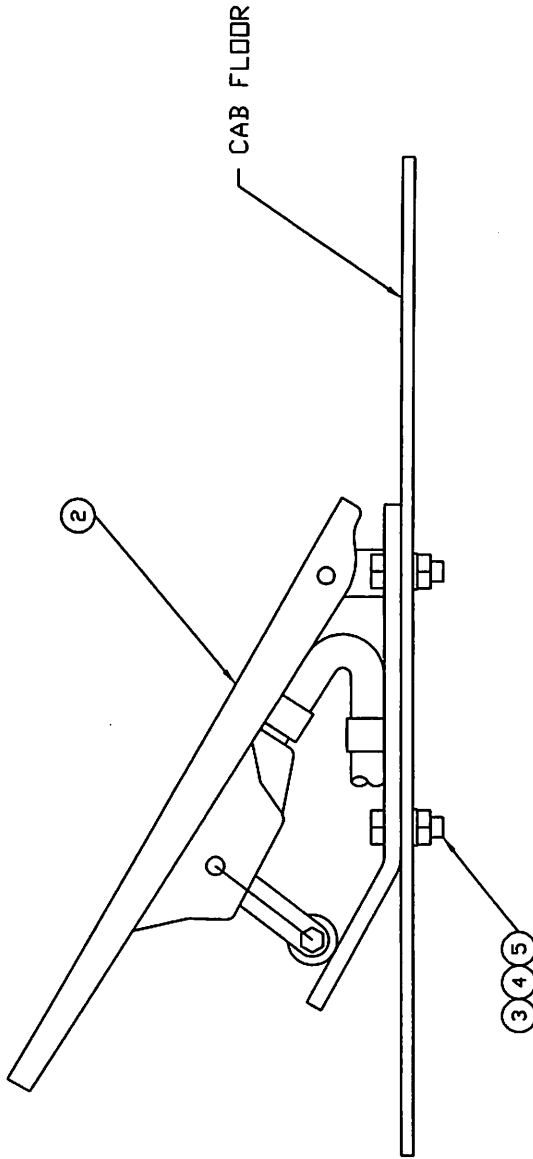
ASSEMBLY NUMBER		DESCRIPTION	
1806702		ELECTRONIC ACCEL. FOOT PEDAL INST'L	
ITEM NO.	PART NUMBER	DESCRIPTION	QTY. USED
2	1806703	ELECTRONIC ACCEL. FOOT PEDAL	1
3	1800061	H.H.C.S. 5/16-18 X 7/8" LONG	3
4	1800512	HEX NUT 5/16-18	3
5	1800074	5/16" LOCK WASHER.	3

SWINGMASTER CORPORATION

11415 MELROSE AVENUE

FRANKLIN PARK, ILLINOIS 60131

TEL: (847) 451-1224



① INSTALLATION

TOLERANCES

UNLESS OTHERWISE SPECIFIED
 FRACTIONS +/—
 3 PLACE DECIMALS +/-
 2 PLACE DECIMALS +/-
 1 PLACE DECIMALS +/-
 ANGLES

SEE SWINGMASTER SPECIFICATION
 G-1 FOR TOLERANCES NOT SPECIFIED
 DIMENSIONS ARE IN INCHES
 DO NOT SCALE DRAWING
 SCALE: 1=2

SWINGMASTER CORPORATION

11415 MELROSE AVENUE
 FRANKLIN PARK, ILLINOIS 60131

ELECTRONIC ACCELERATOR FOOT PEDAL INSTALLATION

WITH J.D. PE4045HF275 ENG.

DRAWN BY: J.K. DRAWING NO.

DATE: 1-27-04

H2-171

MACHINE

SECTION

1

MODEL SL180-13 SWINGLOADER

DRIVE SYSTEM CONTROLS

ASSEMBLY
NUMBER

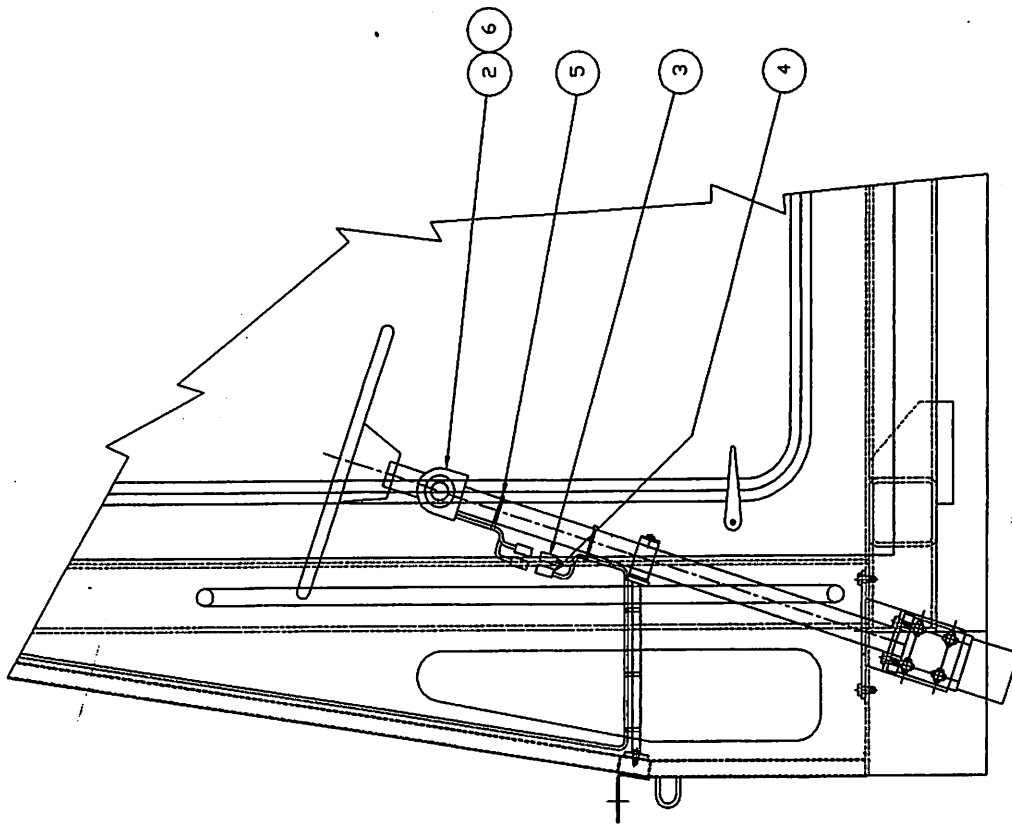
DESCRIPTION

1806352 ELECTRONIC ACCEL FOOT PEDAL INSTALL

ITEM NO.	PART NUMBER	DESCRIPTION	QTY USED
2	1806353	ELECTRONIC ACCEL FOOT PEDAL	1
3	1800061	H.H.C.S. 5/16-18 X 7/8" LONG	3
4	1800512	HEX NUT 5/16-18	3
5	1800074	5/16" LOCK WASHER	3

SWINGMASTER CORPORATION
11415 MELROSE AVENUE
FRANKLIN PARK, ILLINOIS 60131

TEL: (847) 451-1224



1 INSTALLATION

TOLERANCES:

UNLESS OTHERWISE SPECIFIED
 FRACTIONS \pm / $\sqrt{}$
 3 PLACE DECIMALS \pm /-
 2 PLACE DECIMALS \pm /-
 1 PLACE DECIMALS \pm /-
 ANGLES

SEE SWINGMASTER SPECIFICATION
 G-1 FOR TOLERANCES NOT SPECIFIED
 DIMENSIONS ARE IN INCHES
 DO NOT SCALE DRAWING
 SCALE: 1=6

SWINGMASTER CORPORATION

11415 MELROSE AVENUE
 FRANKLIN PARK, ILLINOIS 60131

TRANSMISSION SHIFTER INSTALLATION

MODEL 182 & SL180

DRAWN BY: J.K.

DRAWING NO.

DATE: 5-8-90

C-228

MACHINE _____ SECTION 1

MODEL SL180-13 SWINGLOADER _____ DRIVE SYSTEM CONTROLS

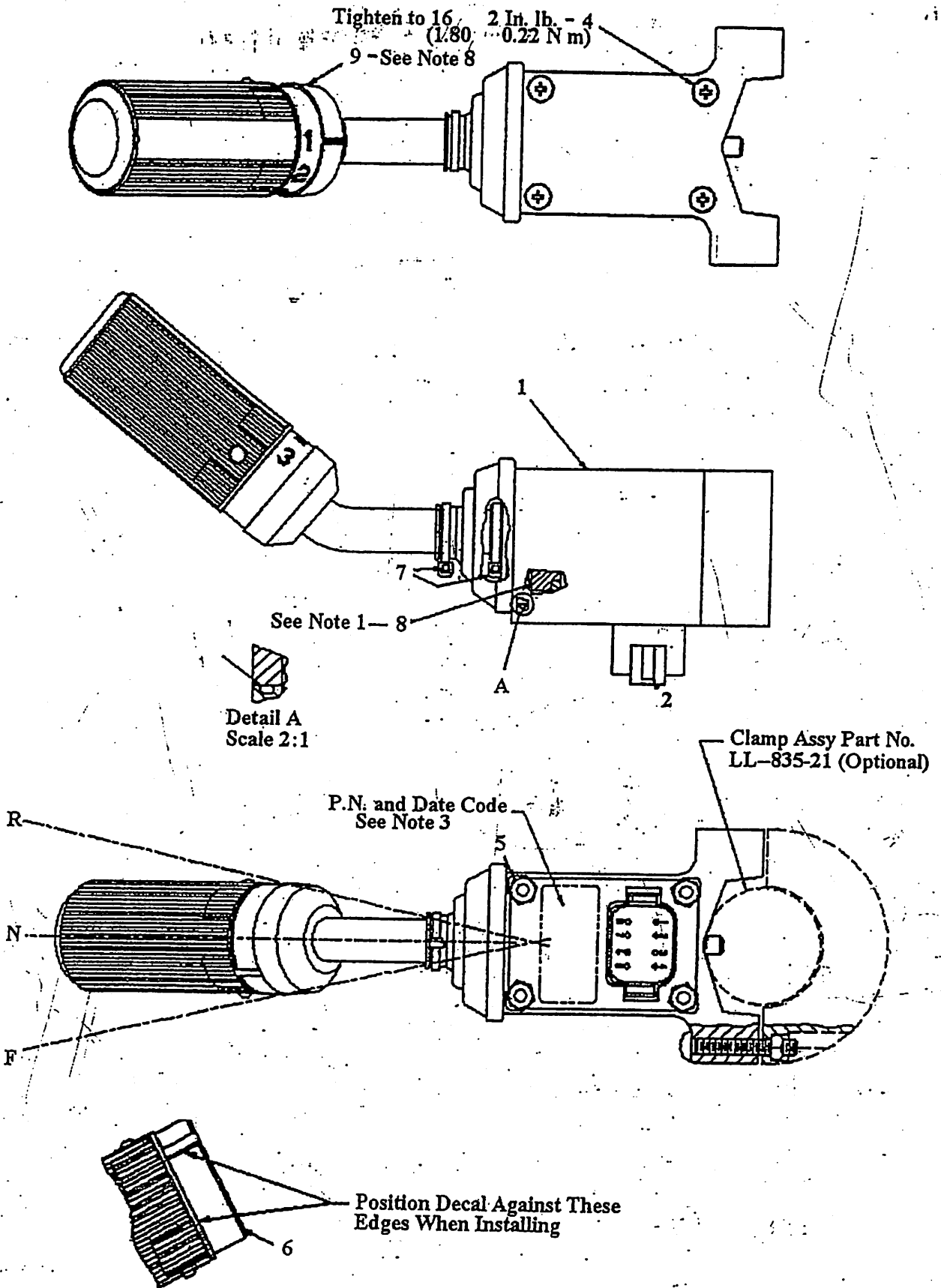
ASSEMBLY NUMBER	DESCRIPTION
1803571	TRANSMISSION SHIFTER INSTALLATION

ITEM NO.	PART NUMBER	DESCRIPTION	QTY. USED
002	1802217	TRANSMISSION SHIFTER	1.00
003	1802218	1/4" SNAP-ON TERMINAL - MALE	4.00
004	1802223	1/4" SNAP-ON TERMINAL - FEMALE	3.00
005	1801074	1/16-2 TY-RAP CABLE TIE	5.00
006	1803538	TRANSMISSION SHIFTER MOUNTING HARDWARE	1.00

SWINGMASTER CORPORATION
 11415 MELROSE AVENUE
 FRANKLIN PARK, ILLINOIS 60131

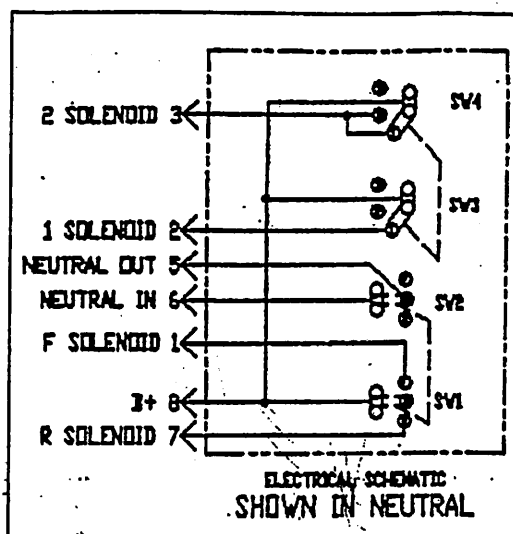
TEL: (847) 451-1224

Parts Book
Shifter Assembly, LL-835-13



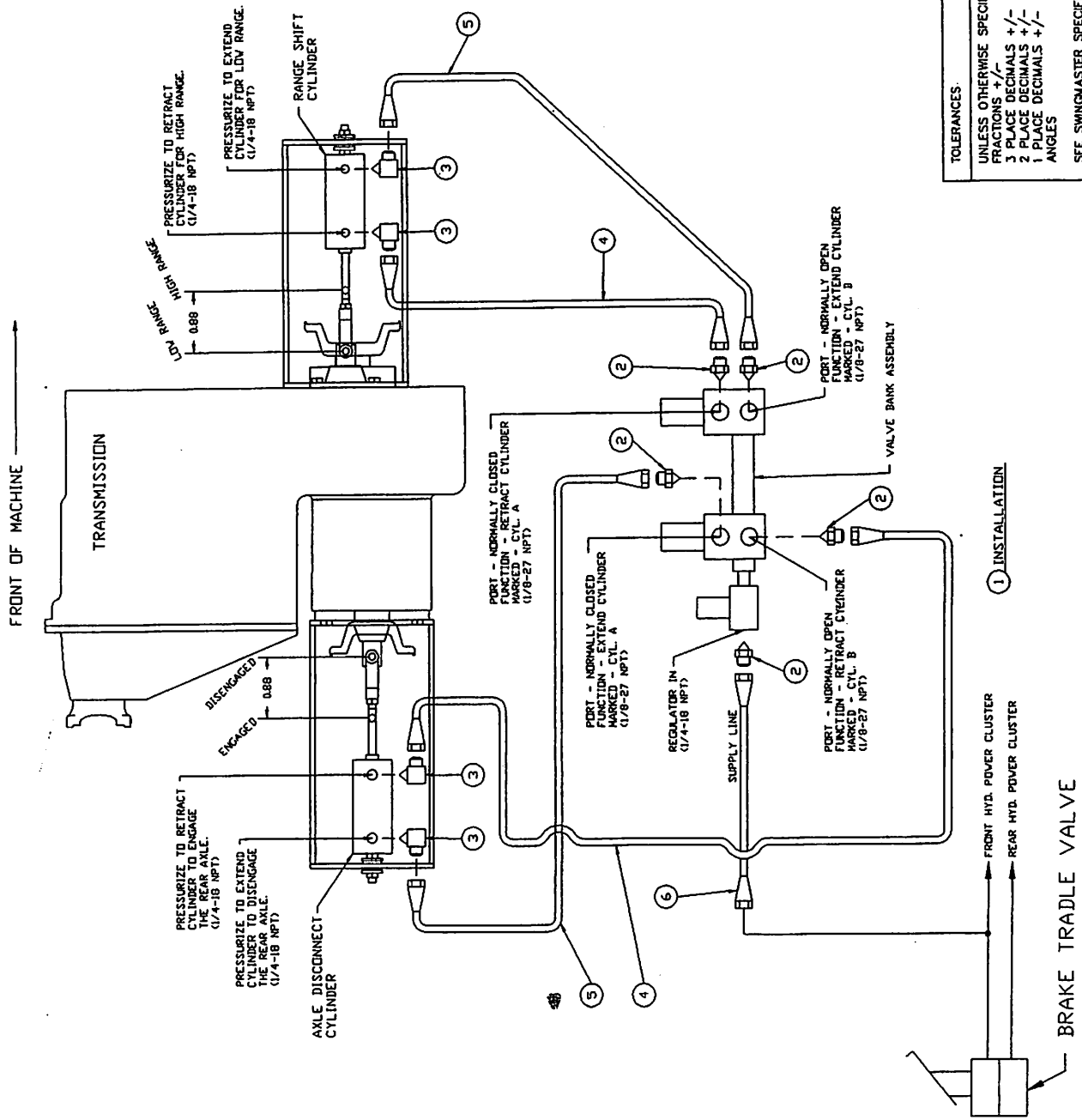
Notes:

1. Apply item 8 to Item 2 prior to assembly.
2. 100% check for proper operation.
3. Hobbs P/N and date code to be stamped in area shown. Letters $2 \pm .03$ high.
4. Torque requirement to change speeds to be 8.88 ± 2.6 In. Lb. (1.0 ± 0.3 N m)
5. Torque requirement to change directions to be 22.7 In. Lbs (2.5 ± 0.8 N m)
6. Torque requirement to disengage neutral detent 15.45 In. Lbs. (1.7 ± 0.5 N m)
7. Critical Characteristic. No Spc data required.
8. Rotate Knob to 1st speed. Center white line of collar on No. 1. Tighten set screw to 3.5 ± 0.5 In. Lbs. (0.40 ± 0.06 N m)
9. A. Mating connector -LL-6800-4
 B. Connector Terminal -LL-6800-2
 Optional Terminal -LL-6800-1
 C. Connector wedge-LL-6800-5
 D. Sealing plug -LL-6800-3



- Legend**
- F Forward Position
 - N Neutral Position
 - R Reverse Position
 - 1 First Gear Position
 - 2 Second Gear Position
 - 3 Third Gear Position
 - Sw1 Direction Selector Switch
 - Sw2 Neutral Switch
 - Sw3 Speed Selector Switch
 - Sw4 Speed Selector Switch

Item	Part Number	Description	Req'd
1	LL-835-23	Housing, handle & C.B. Assy	1
2	LL-835-18	Cover	1
3	LL-835-19	O-ring	1
4	LL-835-22	Screw, 8-32 x 1.75	4
5	LL-835-20	Nut, 8-32	4
6	LL-835-17	Decal, Indicator	1
7	LL-835-15	Locking cable tie	2
8	LL-835-14	Lubricant	A/R
9	LL-835-16	Set screw (M4 x 0.7)	1



SWINGMASTER CORPORATION	
11415 MELROSE AVENUE FRANKLIN PARK, ILLINOIS 60131	
RANGE SHIFT AND AXLE DISCONNECT LINES AND FITTINGS	
MODEL SL180	
DRAWN BY: J.K.	DRAWING NO. C1-136
DATE: 7-22-98	

TOLERANCES:
 UNLESS OTHERWISE SPECIFIED
 FRACTIONS +/-
 3 PLACE DECIMALS +/-
 2 PLACE DECIMALS +/-
 1 PLACE DECIMALS +/-
 ANGLES

SEE SWINGMASTER SPECIFICATION
 G-1 FOR TOLERANCES NOT SPECIFIED

DIMENSIONS ARE IN INCHES
 DO NOT SCALE DRAWING
 SCALE: NONE

BRAKE TRADE VALVE

FRONT HYD. POWER CLUSTER
 REAR HYD. POWER CLUSTER

1 INSTALLATION

VALVE BANK ASSEMBLY

PORT - NORMALLY OPEN
 FUNCTION - EXTEND CYLINDER
 MARKED - CYL. B
 (1/8-27 NPT)

PORT - NORMALLY OPEN
 FUNCTION - RETRACT CYLINDER
 MARKED - CYL. B
 (1/8-27 NPT)

PORT - NORMALLY CLOSED
 FUNCTION - EXTEND CYLINDER
 MARKED - CYL. A
 (1/8-27 NPT)

PORT - NORMALLY CLOSED
 FUNCTION - RETRACT CYLINDER
 MARKED - CYL. A
 (1/8-27 NPT)

REGULATOR IN
 (1/4-18 NPT)

SUPPLY LINE

AXLE DISCONNECT
 CYLINDER

PRESSURIZE TO EXTEND
 CYLINDER TO DISENGAGE
 THE REAR AXLE.
 (1/4-18 NPT)

PRESSURIZE TO RETRACT
 CYLINDER TO ENGAGE
 THE REAR AXLE.
 (1/4-18 NPT)

ENGAGED
 0.88

DISENGAGED

TRANSMISSION

FRONT OF MACHINE

LOW RANGE
 0.88

HIGH RANGE

RANGE SHIFT
 CYLINDER

PRESSURIZE TO EXTEND
 CYLINDER FOR LOW RANGE.
 (1/4-18 NPT)

PRESSURIZE TO RETRACT
 CYLINDER FOR HIGH RANGE.
 (1/4-18 NPT)

MACHINE SECTION 1

MODEL SL180-13 SWINGLOADER DRIVE SYSTEM CONTROLS

ASSEMBLY NUMBER	DESCRIPTION
1805778	RANGE SHIFT AND AXLE DISCONNECT L & F

ITEM NO.	PART NUMBER	DESCRIPTION	QTY. USED
002	1800750	STRAIGHT MALE 1/8 PIPE TO 1/4 TUBE	5.00
003	1800777	90 DEG MALE ELBOW 1/4 PIPE TO 1/4 TUBE	4.00
004	1802477	HOSE ASSEMBLY 1503-4	2.00
005	1802478	HOSE ASSEMBLY 1503-4	2.00
007	1805779	HOSE ASSEMBLY 1503-4	1.00

SWINGMASTER CORPORATION

11415 MELROSE AVENUE

FRANKLIN PARK, ILLINOIS 60131

TEL: (847) 451-1224

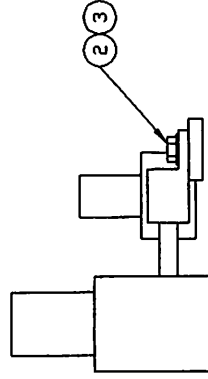
PORT - NORMALLY CLOSED
MARKED - CYL. A
(1/8-27 NPT)

PORT - NORMALLY CLOSED
MARKED - CYL. A
(1/8-27 NPT)

REGULATOR IN
SUPPLY LINE
(1/4-18 NPT)

PORT - NORMALLY OPEN
MARKED - CYL. B
(1/8-27 NPT)

PORT - NORMALLY OPEN
MARKED - CYL. B
(1/8-27 NPT)



① INSTALLATION

TOLERANCES:
UNLESS OTHERWISE SPECIFIED
FRACTIONS +/-
3 PLACE DECIMALS +/-
2 PLACE DECIMALS +/-
1 PLACE DECIMALS +/-
ANGLES
SEE SWINGMASTER SPECIFICATION
G-1 FOR TOLERANCES NOT SPECIFIED
DIMENSIONS ARE IN INCHES
DO NOT SCALE DRAWING
SCALE: NONE

SWINGMASTER CORPORATION	
11415 MELROSE AVENUE FRANKLIN PARK, ILLINOIS 80131	
VALVE BANK ASSEMBLY INSTALLATION	
MODEL 361 & SL180	
DRAWN BY: J.K.	DRAWING NO.
DATE: 1-23-89	H-182

MACHINE _____ SECTION 1

MODEL SL180-13 SWINGLOADER _____ DRIVE SYSTEM CONTROLS

ASSEMBLY NUMBER	DESCRIPTION
1802471	VALVE BANK ASSEMBLY INSTALLATION

ITEM NO.	PART NUMBER	DESCRIPTION	QTY. USED
002	1801430	H.H.C.S. 5/16-18 X 5/8" LONG	2.00
003	1800074	5/16" LOCK WASHER	2.00
004	1802472	VALVE BANK ASSEMBLY	1.00

SWINGMASTER CORPORATION

11415 MELROSE AVENUE

FRANKLIN PARK, ILLINOIS 60131

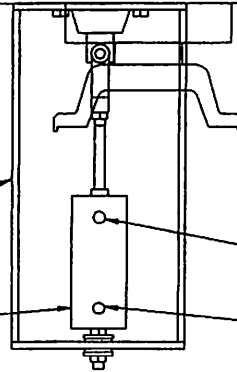
TEL: (847) 451-1224

FRONT OF MACHINE

TRANSMISSION

3

2



1 INSTALLATION
PRESSURIZE TO RETRACT CYLINDER FOR HIGH RANGE.

PRESSURIZE TO EXTEND CYLINDER FOR LOW RANGE.

TOLERANCES	UNLESS OTHERWISE SPECIFIED FRACTIONS +/- 3 PLACE DECIMALS +/- 2 PLACE DECIMALS +/- 1 PLACE DECIMALS +/- ANGLES
SWINGMASTER CORPORATION 11415 MELROSE AVENUE FRANKLIN PARK, ILLINOIS 60131	
RANGE SHIFT CYLINDER INSTALLATION	
CLARK 28000 SERIES TRANSMISSION	
MODEL 361 & 5L180	
DRAWN BY: J.K.	DRAWING NO. H-169
DATE: 11-18-88	

MACHINE SECTION 1

MODEL SL180-13 SWINGLOADER DRIVE SYSTEM CONTROLS

ASSEMBLY NUMBER	DESCRIPTION
----- 1802162 -----	----- RANGE SHIFT CYLINDER INSTALLATION -----

ITEM NO.	PART NUMBER	DESCRIPTION	QTY. USED
-----	-----	-----	-----
002	1802165	PNUEMATIC CYLINDER-2" BORE X 7/8" STROKE	1.00
003	1802167	RANGE SHIFT CYLINDER MOUNTING BRACKET	1.00
-----	-----	-----	-----

SWINGMASTER CORPORATION
 11415 MELROSE AVENUE
 FRANKLIN PARK, ILLINOIS 60131

TEL: (847) 451-1224

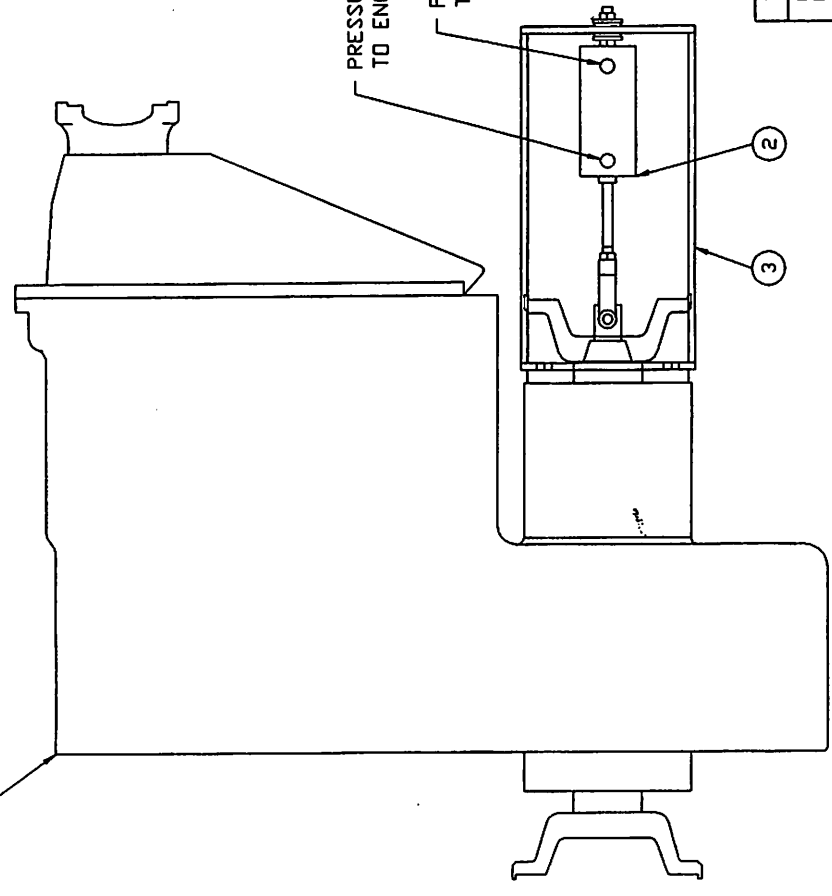


ITEM	PART NO.	DESCRIPTION	QTY.
1	H-170	AXLE DISCONNECT CYLINDER INSTALLATION	1
2	P-127-3	PNEUMATIC CYLINDER - 2" BORE X 7/8" STROKE	1 *
3	P-127-4	AXLE DISCONNECT CYLINDER MOUNTING BRACKET	1

* - INCLUDES MOUNTING HARDWARE

FRONT OF MACHINE

TRANSMISSION



① INSTALLATION

TOLERANCES:
 UNLESS OTHERWISE SPECIFIED
 FRACTIONS +/-
 3 PLACE DECIMALS +/-
 2 PLACE DECIMALS +/-
 1 PLACE DECIMALS +/-
 ANGLES

SEE SWINGMASTER SPECIFICATION
 G-1 FOR TOLERANCES NOT SPECIFIED

DIMENSIONS ARE IN INCHES
 DO NOT SCALE DRAWING
 SCALE: 1/4" = 1"

SWINGMASTER CORPORATION
 11415 MELROSE AVENUE
 FRANKLIN PARK, ILLINOIS 60131

AXLE DISCONNECT CYLINDER INSTALLATION
 CLARK 28000 SERIES TRANSMISSION
 MODEL 361 & SL180

DRAWN BY: J.K.
 DATE: 11-18-88

DRAWING NO. **H-170**

MACHINE	SECTION	1
---------	---------	---

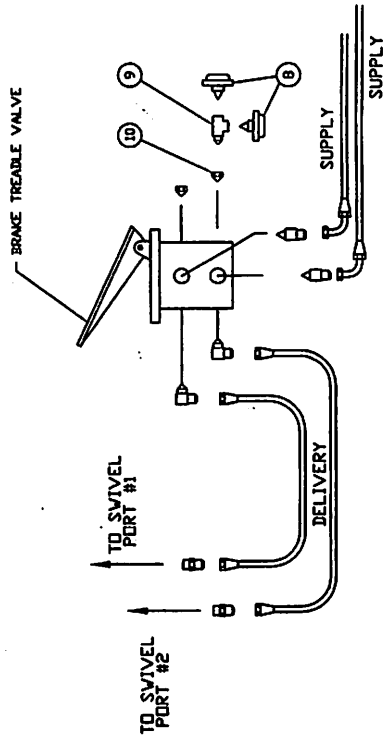
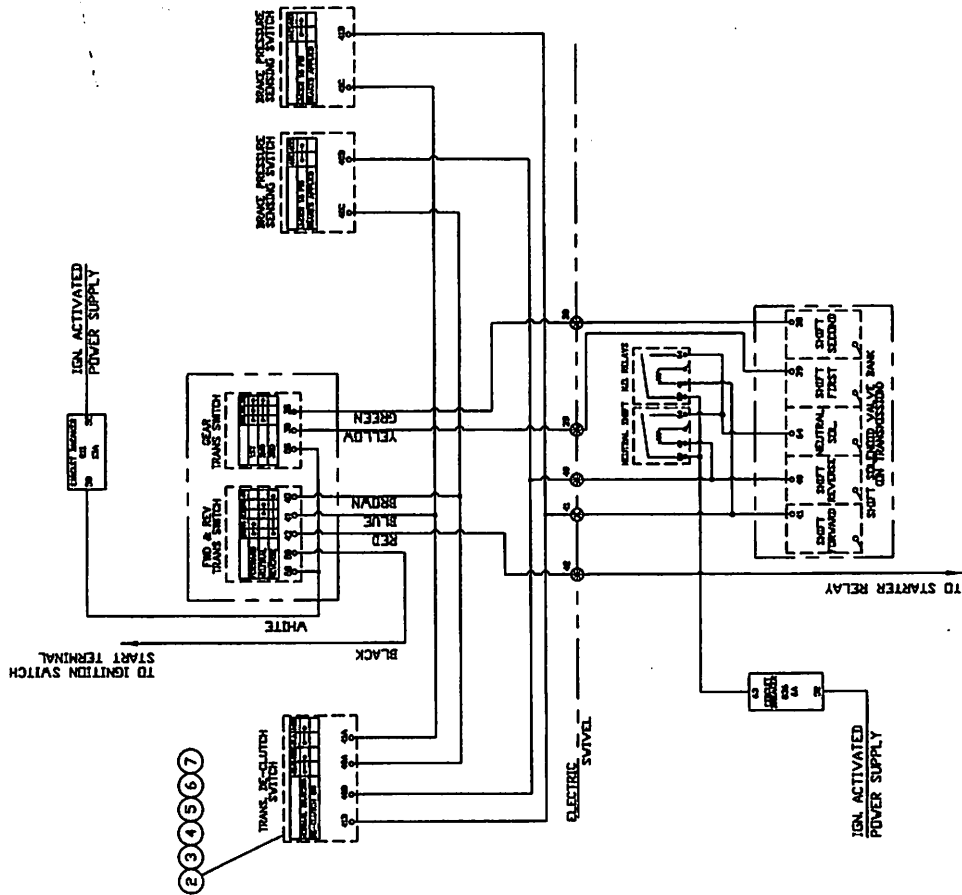
MODEL SL180-13 SWINGLOADER	DRIVE SYSTEM CONTROLS
----------------------------	-----------------------

ASSEMBLY NUMBER	DESCRIPTION
1802163	AXLE DISCONNECT CYLINDER INSTALLATION

ITEM NO.	PART NUMBER	DESCRIPTION	QTY. USED
002	1802165	PNUEMATIC CYLINDER-2" BORE X 7/8" STROKE	1.00
003	1802166	AXLE DISCONNECT CYLINDER MOUNT. BRACKET	1.00

SWINGMASTER CORPORATION
 11415 MELROSE AVENUE
 FRANKLIN PARK, ILLINOIS 60131

TEL: (847) 451-1224



SWINGMASTER CORPORATION
 11415 WELLS AVE.
 FRANKLIN PARK, ILLINOIS 60131

TRANSMISSION DE-CLUTCH INSTALLATION

MODEL 361

DRAWN BY: B.V.
DATE: 4-10-89

DRAWING NO. C-164

TOLERANCES
 UNLESS OTHERWISE SPECIFIED
 FRACTIONS +/-
 3 PLACE DECIMALS +/-
 2 PLACE DECIMALS +/-
 1 PLACE DECIMALS +/-
 ANGLES

SEE SWINGMASTER SPECIFICATION G-1 FOR TOLERANCES NOT SPECIFIED

DIMENSIONS ARE IN INCHES DO NOT SCALE DRAWING SCALE 1

1 INSTALLATION

MACHINE

SECTION

1

MODEL SL180-13 SWINGLOADER

MISCELLANEOUS

ASSEMBLY NUMBER		DESCRIPTION	
1802847		TRANSMISSION DE-CLUTCH INSTALLATION	
ITEM NO.	PART NUMBER	DESCRIPTION	QTY USED
2	1802280	SWITCH - ON - ON (DOUBLE POLE)	1
3	1802848	SYMBOL - TRANSMISSION DE-CLUTCH	1
4	1800410	SOCKET HOUSING FOR SWITCH	1
5	1800412	SNAP-ON TERMINAL, FEMALE	6
6	1802849	NAME PLATE - TRANSMISSION DE-CLUTCH	1
7	1800845	1/8" POP RIVET	2
8	1802850	PRESSURE SENSING SWITCH(NORMALLY CLOSED)	2
9	1800911	1/8 PIPE SERVICE TEE M-F-F	1
10	1802851	PIPE REDUCER BUSHING - 3/8 TO 1/8	1
11	1801086	BULK 14 GA.WIRE/(FT)	0

SWINGMASTER CORPORATION

11415 MELROSE AVENUE

FRANKLIN PARK, ILLINOIS 60131

TEL: (847) 451-1224