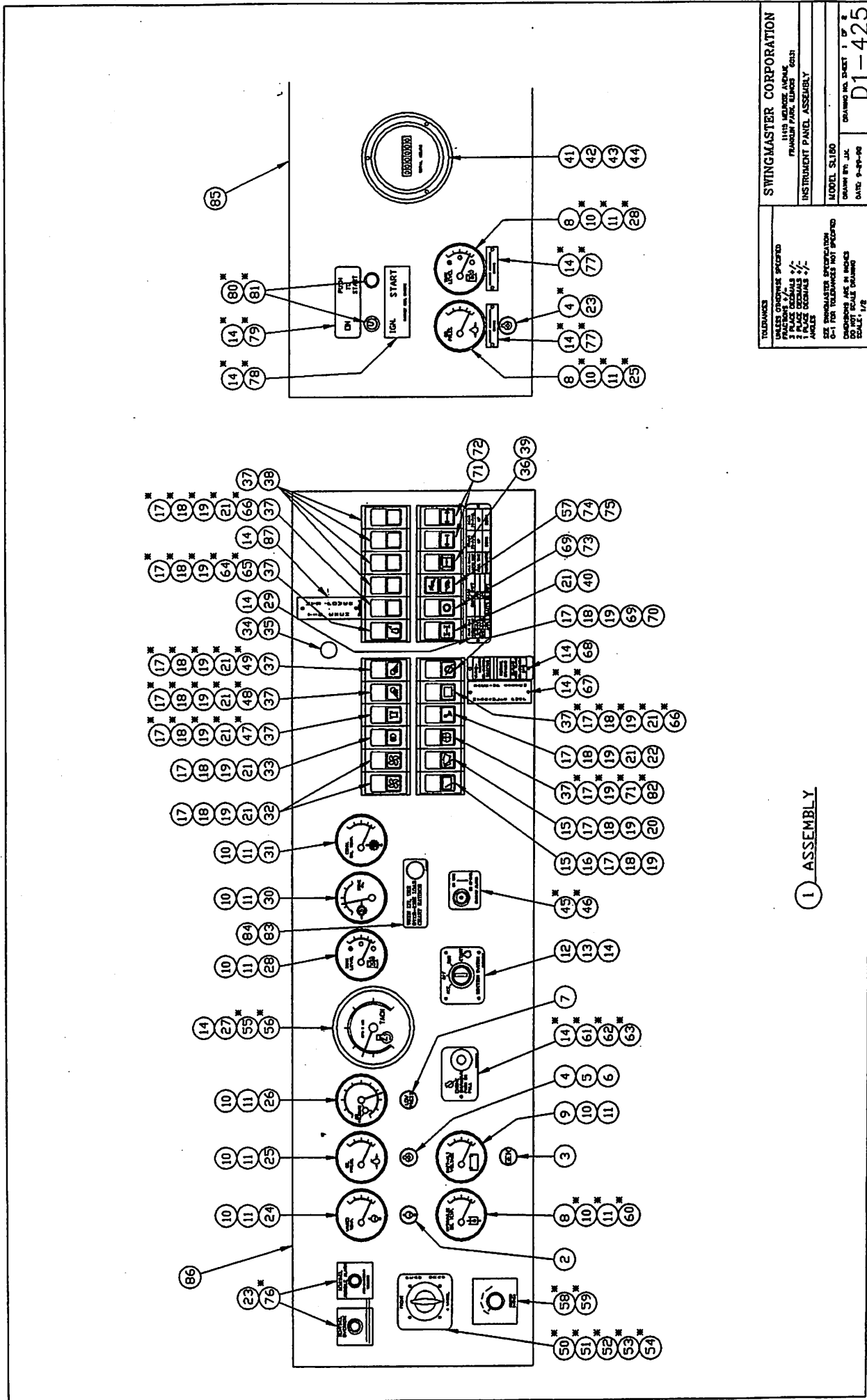




SWINGMASTER

SECTION I

ELECTRICAL  
SYSTEM



TOLERANCES  
 UNLESS OTHERWISE SPECIFIED  
 1/16" DECIMALS  
 1/32" DECIMALS  
 1/64" DECIMALS  
 ANGLES  
 SEE DIMENSIONAL SPECIFICATION  
 C-1 FOR TOLERANCES NOT SPECIFIED  
 DIMENSIONS ARE IN INCHES  
 SCALE: 1/2"

SWINGMASTER CORPORATION  
 1155 WEDGE AVE.  
 FRANKFORD PARK, ILLINOIS 60131  
 INSTRUMENT PANEL ASSEMBLY

MODEL SL150  
 DRAWN BY: J.K.  
 DATE: 9-24-59

DRAWING NO. SHEET 1 OF 2  
**D1-425**

1 ASSEMBLY

MACHINE	SECTION	1
MODEL SL180-13 SWINGLOADER	ELECTRICAL SYSTEM	

ASSEMBLY NUMBER	DESCRIPTION
1805818	INSTRUMENT PANEL ASSEMBLY

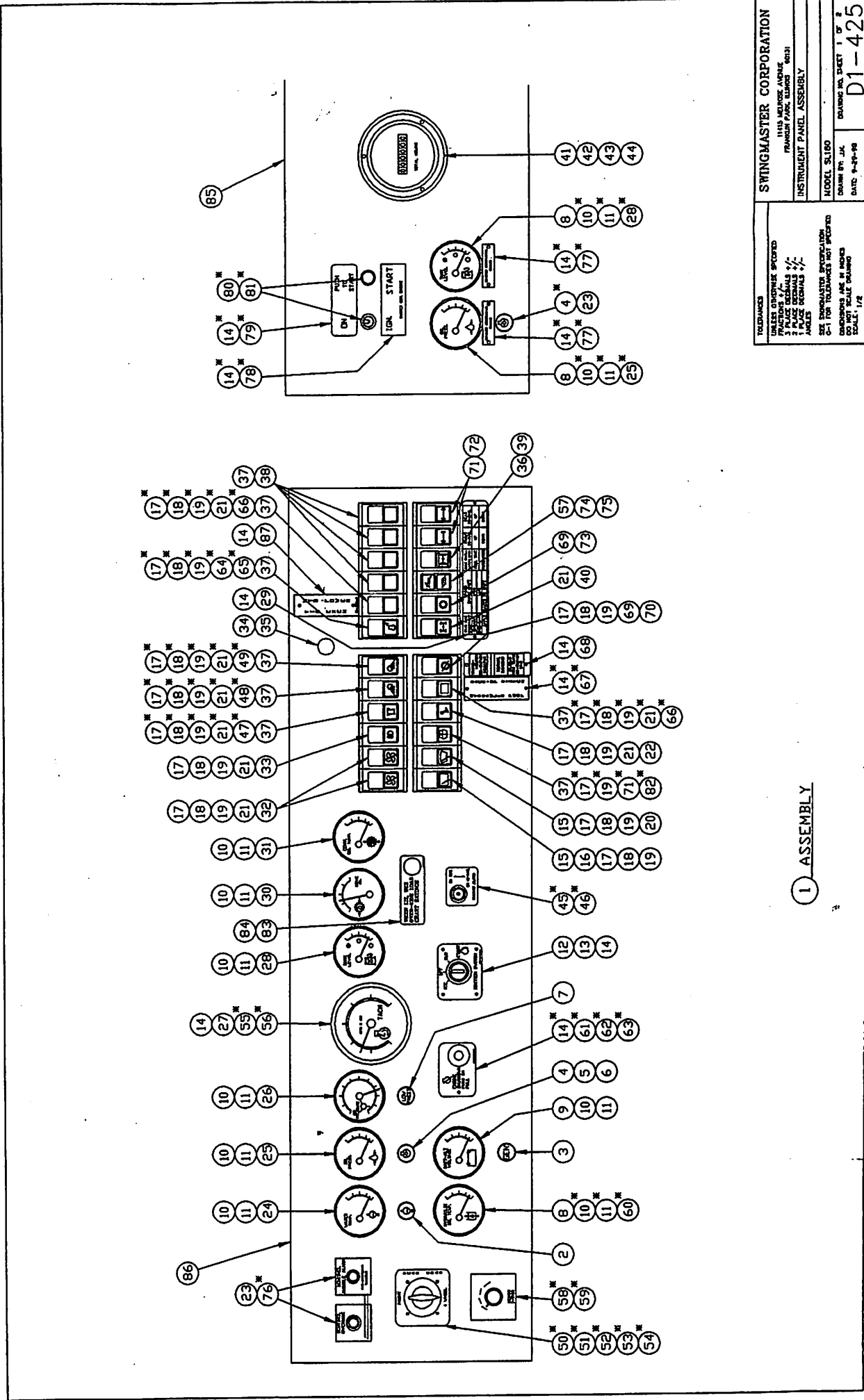
ITEM NO.	PART NUMBER	DESCRIPTION	QTY. USED
002	1802291	INDICATOR BUZZ LITE - HI-TEMP.	1.00
003	1803586	INDICATOR LIGHT - GEN	1.00
004	1803587	INDICATOR LIGHT - OIL PRESSURE	1.00
005	1802584	CHECK VALVE	1.00
006	1803588	DUAL RATE ALARM MOUNTING BRACKET	1.00
007	1800385	INDICATOR BUZZ-LITE - LOW AIR PRESSURE	1.00
008	1800394	KNOCKOUT PLUG	3.00
009	1800277	VOLTMETER GAUGE	1.00
010	1800205	LAMP SOCKET	7.00
011	1800390	LIGHT BULB - SINGLE CONTACT, 14.4V	7.00
012	1800223	IGNITION SWITCH	1.00
013	1802287	NAME PLATE - IGNITION SWITCH	1.00
014	1800845	1/8" POP RIVET	14.00
015	1801284	SWITCH - OFF - LOW - HIGH	2.00
016	1801286	SYMBOL - REAR WINDOW WIPER - GREEN	1.00
017	1800410	SOCKET HOUSING FOR SWITCH	8.00
018	1800411	SOCKET HOUSING FOR LIGHT	8.00
019	1800412	SNAP-ON TERMINAL, FEMALE	66.00
020	1801285	SYMBOL - FRONT WINDSHIELD WIPER - GREEN	1.00
021	1800399	SWITCH, ON - OFF, 12V - 16AMP	6.00
022	1800405	SYMBOL - CONTROL LEVER - GREEN	1.00
023	1800395	STD. HOLE PLUG - 5/8"	3.00
024	1800280	WATER TEMPERATURE GAUGE	1.00
025	1800284	ENGINE OIL PRESSURE GAUGE	1.00
026	1800279	AIR PRESSURE GAUGE	1.00
027	1802286	COVER PLATE	1.00
028	1800283	FUEL GAUGE	1.00
029	1802285	NAME PLATE	1.00
030	1800278	TRANSMISSION FLUID PRESSURE GAUGE	1.00
031	1800281	TORQUE CONVERTER OIL TEMPERATURE GAUGE	1.00
032	1800408	SYMBOL - DEFROSTER	2.00

SWINGMASTER CORPORATION

11415 MELROSE AVENUE

FRANKLIN PARK, ILLINOIS 60131

TEL: (847) 451-1224



TOLERANCES  
 UNLESS OTHERWISE SPECIFIED  
 1 FRACTIONS DECIMALS  
 2 PLACES DECIMALS  
 3 PLACES DECIMALS  
 ANGLES

SEE DIMENSIONAL SPECIFICATION  
 0-1 FOR TOLERANCES NOT SPECIFIED  
 DIMENSIONS ARE IN INCHES  
 DO NOT SCALE DRAWING  
 SCALE: 1/2"

**SWINGMASTER CORPORATION**  
 INSTRUMENT PANEL ASSEMBLY

MODEL SL110  
 DRAWN BY: JAL  
 DATE: 9-29-98

DRAWING NO. SHEET 1 OF 2  
**D1-425**

1 ASSEMBLY

MACHINE SECTION 1  
 -----  
 MODEL SL180-13 SWINGLOADER ELECTRICAL SYSTEM

ASSEMBLY  
 NUMBER DESCRIPTION  
 -----  
 1805818 INSTRUMENT PANEL ASSEMBLY  
 -----

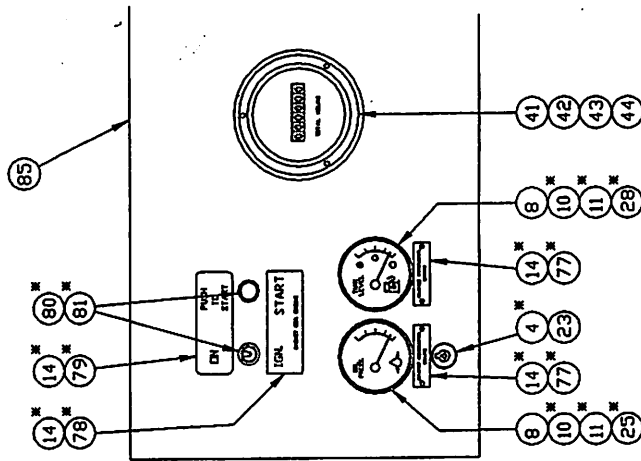
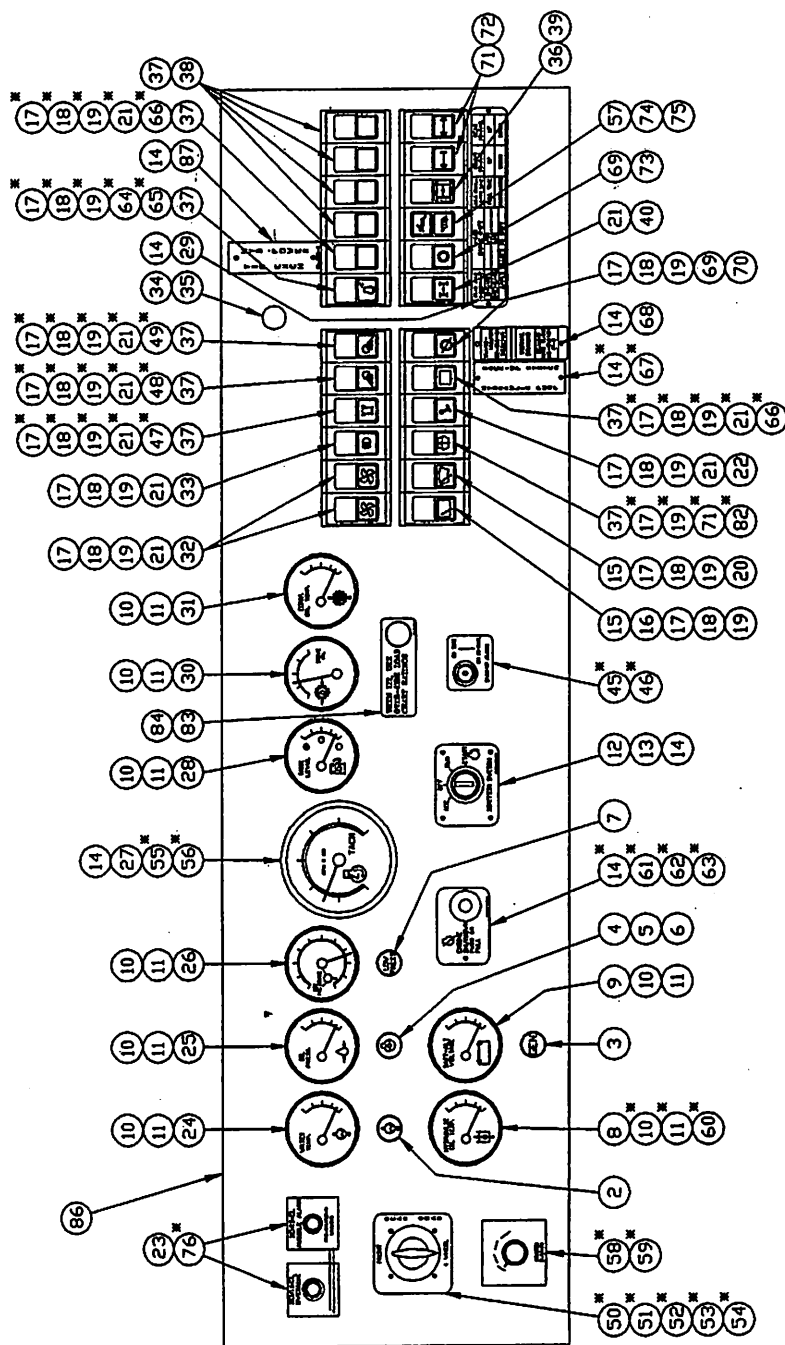
ITEM NO.	PART NUMBER	DESCRIPTION	QTY. USED
033	1800401	SYMBOL - HEADLIGHTS	1.00
034	1802283	DASH LAMP HOUSING	1.00
035	1802284	DASH LIGHT BULB	1.00
036	1802280	SWITCH - ON - ON (DOUBLE POLE)	1.00
037	1800407	BLANK PLUG	11.00
038	1801283	MOUNTING FRAME FOR 6 SWITCHES	4.00
039	1802273	SYMBOL - AXLE OSCILLATION LOCK	1.00
040	1802272	SYMBOL - AXLE DISCONNECT	1.00
041	1800337	HOUR METER	1.00
042	1800338	DAMPENER - FOR HOUR METER	1.00
043	1800935	ROUND HEAD MACHINE SCREW #6-32 X 1/2	6.00
044	1800565	#6 LOCK WASHER	6.00
045	1801803	TOGGLE SWITCH	0.00
046	1801804	NAME PLATE - BACK-UP ALARM	0.00
047	1800404	SYMBOL - ROTARY BEACON - GREEN	0.00
048	1800402	SYMBOL - FRONT WORK LIGHTS - YELLOW	0.00
049	1800403	SYMBOL - REAR WORK LIGHTS - YELLOW	0.00
050	1800245	4-POLE, ROTARY SWITCH	0.00
051	1801376	STEERING MODES SWITCH LABEL	0.00
052	1800846	FLAT HEAD MACHINE SCREW #6-32 X 1/2 LG	0.00
053	1801204	14 GAGE #6 ELECTRICAL RING TERMINAL	0.00
054	1801086	BULK 14 GA. WIRE/(FT)	0.00
055	1800413	TACHOMETER	0.00
056	1800415	LIGHT KIT FOR TACHOMETER	0.00
057	1802277	SYMBOL - RABBIT	1.00
058	8702084	HEATER SWITCH	0.00
059	8702085	HEATER SWITCH KNOB	0.00
060	1800282	HYDRAULIC OIL TEMPERATURE GAUGE	0.00
061	1802282	ENGINE STOP SWITCH	0.00
062	1802288	NAME PLATE - ENGINE SHUTDOWN PUSH-PULL	0.00
063	1802563	RED KNOB	0.00

SWINGMASTER CORPORATION

11415 MELROSE AVENUE

TEL: (847) 451-1224

FRANKLIN PARK, ILLINOIS 60131



UNLESS OTHERWISE SPECIFIED:  
 1 PUNCH DIMENSIONS  
 2 PUNCH DIMENSIONS  
 3 PUNCH DIMENSIONS  
 4 PUNCH DIMENSIONS  
 5 PUNCH DIMENSIONS  
 6 PUNCH DIMENSIONS  
 7 PUNCH DIMENSIONS  
 8 PUNCH DIMENSIONS  
 9 PUNCH DIMENSIONS  
 10 PUNCH DIMENSIONS  
 11 PUNCH DIMENSIONS  
 12 PUNCH DIMENSIONS  
 13 PUNCH DIMENSIONS  
 14 PUNCH DIMENSIONS  
 15 PUNCH DIMENSIONS  
 16 PUNCH DIMENSIONS  
 17 PUNCH DIMENSIONS  
 18 PUNCH DIMENSIONS  
 19 PUNCH DIMENSIONS  
 20 PUNCH DIMENSIONS  
 21 PUNCH DIMENSIONS  
 22 PUNCH DIMENSIONS  
 23 PUNCH DIMENSIONS  
 24 PUNCH DIMENSIONS  
 25 PUNCH DIMENSIONS  
 26 PUNCH DIMENSIONS  
 27 PUNCH DIMENSIONS  
 28 PUNCH DIMENSIONS  
 29 PUNCH DIMENSIONS  
 30 PUNCH DIMENSIONS  
 31 PUNCH DIMENSIONS  
 32 PUNCH DIMENSIONS  
 33 PUNCH DIMENSIONS  
 34 PUNCH DIMENSIONS  
 35 PUNCH DIMENSIONS  
 36 PUNCH DIMENSIONS  
 37 PUNCH DIMENSIONS  
 38 PUNCH DIMENSIONS  
 39 PUNCH DIMENSIONS  
 40 PUNCH DIMENSIONS  
 41 PUNCH DIMENSIONS  
 42 PUNCH DIMENSIONS  
 43 PUNCH DIMENSIONS  
 44 PUNCH DIMENSIONS  
 45 PUNCH DIMENSIONS  
 46 PUNCH DIMENSIONS  
 47 PUNCH DIMENSIONS  
 48 PUNCH DIMENSIONS  
 49 PUNCH DIMENSIONS  
 50 PUNCH DIMENSIONS  
 51 PUNCH DIMENSIONS  
 52 PUNCH DIMENSIONS  
 53 PUNCH DIMENSIONS  
 54 PUNCH DIMENSIONS  
 55 PUNCH DIMENSIONS  
 56 PUNCH DIMENSIONS  
 57 PUNCH DIMENSIONS  
 58 PUNCH DIMENSIONS  
 59 PUNCH DIMENSIONS  
 60 PUNCH DIMENSIONS  
 61 PUNCH DIMENSIONS  
 62 PUNCH DIMENSIONS  
 63 PUNCH DIMENSIONS  
 64 PUNCH DIMENSIONS  
 65 PUNCH DIMENSIONS  
 66 PUNCH DIMENSIONS  
 67 PUNCH DIMENSIONS  
 68 PUNCH DIMENSIONS  
 69 PUNCH DIMENSIONS  
 70 PUNCH DIMENSIONS  
 71 PUNCH DIMENSIONS  
 72 PUNCH DIMENSIONS  
 73 PUNCH DIMENSIONS  
 74 PUNCH DIMENSIONS  
 75 PUNCH DIMENSIONS  
 76 PUNCH DIMENSIONS  
 77 PUNCH DIMENSIONS  
 78 PUNCH DIMENSIONS  
 79 PUNCH DIMENSIONS  
 80 PUNCH DIMENSIONS  
 81 PUNCH DIMENSIONS  
 82 PUNCH DIMENSIONS  
 83 PUNCH DIMENSIONS  
 84 PUNCH DIMENSIONS  
 85 PUNCH DIMENSIONS  
 86 PUNCH DIMENSIONS

SWINGMASTER CORPORATION  
 11115 MEMPHIS AVENUE  
 FRANKLIN PARK, ILLINOIS 60131  
 INSTRUMENT PANEL ASSEMBLY  
 MODEL 51180  
 DRAWN BY: J.K.  
 DATE: 9-29-66  
 DRAWING NO. SHEET 1 OF 2  
 D1-425

1 ASSEMBLY

MACHINE

SECTION

1

MODEL SL180-13 SWINGLOADER

ELECTRICAL SYSTEM

ASSEMBLY  
NUMBER

DESCRIPTION

1805818

INSTRUMENT PANEL ASSEMBLY

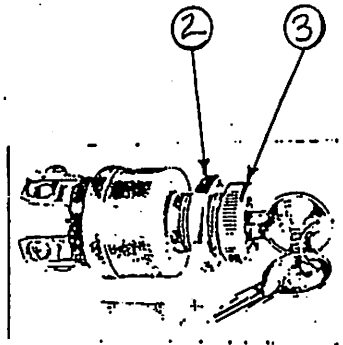
ITEM NO.	PART NUMBER	DESCRIPTION	QTY. USED
064	1800400	SWITCH, OFF - (ON) (MOMENTARY)	0.00
065	1802271	SYMBOL - ETHER START	0.00
066	1800409	SYMBOL - RED BLANK	0.00
067	1801498	NAME PLATE	0.00
068	1802849	NAME PLATE - TRANSMISSION DE-CLUTCH	1.00
069	1802280	SWITCH - ON - ON (DOUBLE POLE)	2.00
070	1802848	SYMBOL - TRANSMISSION DE-CLUTCH	1.00
071	1802275	SWITCH - (ON) - OFF - (ON) (MOMENTARY)	2.00
072	1802270	SYMBOL - HI-RAIL	2.00
073	1802279	SYMBOL - TRANSMISSION	1.00
074	1802278	SYMBOL - TURTLE	1.00
075	1802281	PILOT LAMP (DOUBLE)	1.00
076	1800420	WARNING LIGHT/BUZZER W/DECAL	0.00
077	1802435	NAME PLATE - MAGNET GENERATOR ENGINE	0.00
078	1803594	NAME PLATE - ON - PUSH TO START	0.00
079	1803595	NAME PLATE - IGNITION START	0.00
080	8700004	IGNITION SWITCH - TOGGLE	0.00
081	8700005	STARTER SWITCH - PUSHBUTTON	0.00
082	1801288	SYMBOL - WINDSHIELD WASHER	0.00
083	1805819	INDICATOR LIGHT - YELLOW	1.00
084	1804206	NAME PLATE - USE OVER-SIDE LOAD RATINGS	1.00
085	1805820	INSTRUMENT PANEL - R.H.	1.00
086	1805821	INSTRUMENT PANEL - L.H.	1.00
087	1805848	NAME PLATE - TIE EXCH. POWER	1.00

SWINGMASTER CORPORATION

11415 MELROSE AVENUE

FRANKLIN PARK, ILLINOIS 60131

TEL: (847) 451-1224



① ASSEMBLY



---

MACHINE	SECTION	1
---------	---------	---

---

MODEL SL180-13 SWINGLOADER	ELECTRICAL SYSTEM
----------------------------	-------------------

ASSEMBLY NUMBER	DESCRIPTION
1800223	IGNITION SWITCH ASSEMBLY

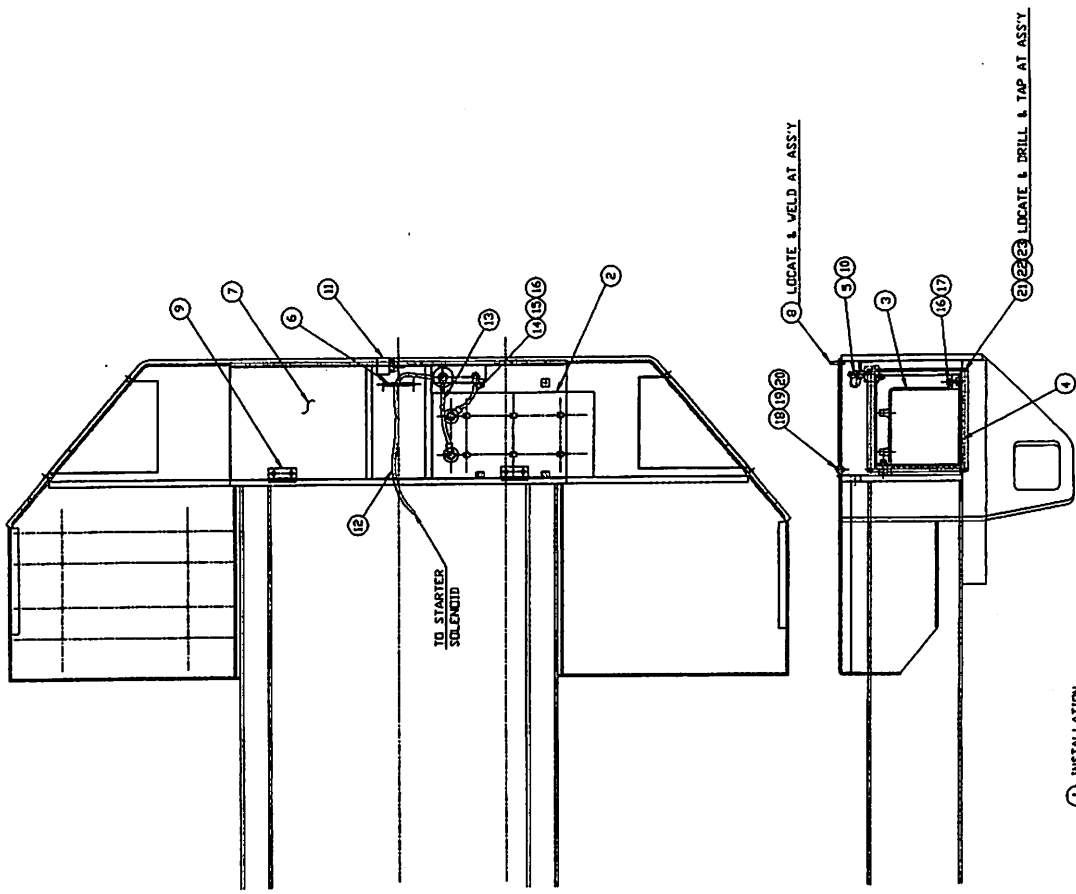
ITEM NO.	PART NUMBER	DESCRIPTION	QTY. USED
2	8700671	HEX NUT	1
3	8700672	ALUMINUM FACE NUT	1

SWINGMASTER CORPORATION

11415 MELROSE AVENUE

FRANKLIN PARK, ILLINOIS 60131

TEL: (847) 451-1224



① INSTALLATION

TOLERANCES UNLESS OTHERWISE SPECIFIED FRACTIONS 1/16" DECIMALS 0.001" HOLE DIMENSIONS +/- HOLE DEPTH +/- ANGLES DEGREES +/-		<b>SWINGMASTER CORPORATION</b> 14015 PARK BLVD. BATTERY INSTALLATION MITCHEL SLIDEN
IF SWINGMASTER SPECIFICATION DIMENSIONS ARE IN BRACKETS DO NOT SCALE DRAWING SCALE: 1/8"		DRAWN BY: R.V.V. DATE: 7-29-98 DRAWING NO. <b>D-796</b>

MACHINE

SECTION

1

MODEL SL180-13 SWINGLOADER

ELECTRICAL SYSTEM

ASSEMBLY  
NUMBER

DESCRIPTION

1805814

BATTERY INSTALLATION

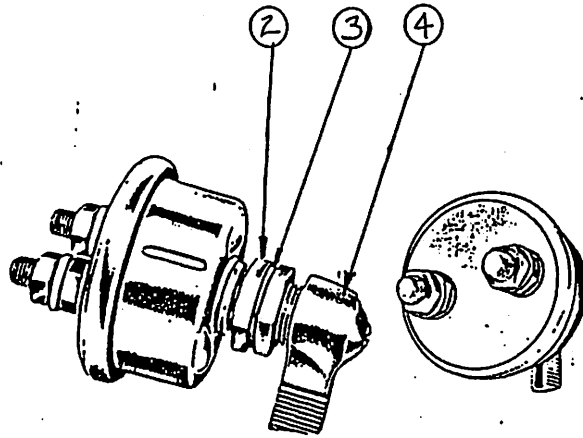
ITEM NO.	PART NUMBER	DESCRIPTION	QTY. USED
002	1802148	12 VOLT BATTERY - SIZE 8D	1.00
003	1805815	BATTERY HOLD DOWN	2.00
004	1802149	RUBBER PAD - 21.50" LONG X 11.25" WIDE	1.00
005	1800221	MASTER DISCONNECT SWITCH	1.00
006	1802142	RETRACTABLE HANDLE	1.00
007	1805816	TOOL BOX COVER	1.00
008	1803326	U-BOLT	1.00
009	1800310	HINGE 3" x 3.5" LG.	2.00
010	1800222	FACE PLATE FOR MASTER SWITCH	1.00
011	1800175	PADLOCK AND KEY	1.00
012	1801275	BATTERY CABLE ASSEMBLY	1.00
013	1801276	BATTERY CABLE ASSEMBLY	1.00
014	1800318	BATTERY GROUND STRAP	1.00
015	1800514	HEX NUT 3/8-16	1.00
016	1800568	3/8" LOCK WASHER	5.00
017	1800454	H.H.C.S. 3/8-16 X 1 1/4" LONG	4.00
018	1800443	H.H.C.S. 5/16-18 X 1" LONG	4.00
019	1800512	HEX NUT 5/16-18	4.00
020	1800074	5/16" LOCK WASHER	4.00
021	1805817	BATTERY BOX COVER WELDMENT	2.00
022	1800436	H.H.C.S. 1/4-20 X 3/4" LONG	8.00
023	1800567	1/4" LOCK WASHER	8.00

SWINGMASTER CORPORATION

11415 MELROSE AVENUE

FRANKLIN PARK, ILLINOIS 60131

TEL: (847) 451-1224



① ASSEMBLY

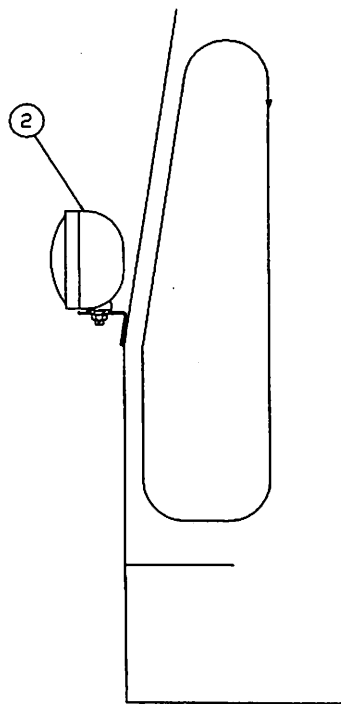
MACHINE	SECTION	1
MODEL SL180-13 SWINGLOADER	ELECTRICAL SYSTEM	

ASSEMBLY NUMBER	DESCRIPTION
1800221	MASTER DISCONNECT SWITCH ASSEMBLY

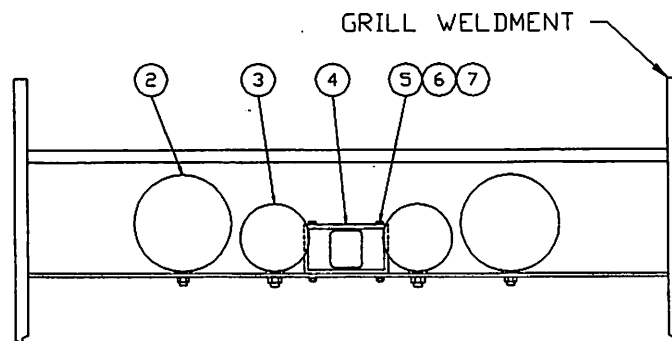
ITEM NO.	PART NUMBER	DESCRIPTION	QTY. USED
2	8700673	HEX NUT	2
3	8700674	LOCKWASHER	1
4	8700675	LEVER - WITH SCREW & LOCKWASHER	1

SWINGMASTER CORPORATION  
 11415 MELROSE AVENUE  
 FRANKLIN PARK, ILLINOIS 60131

TEL: (847) 451-1224



REAR VIEW



① INSTALLATION

<b>TOLERANCES</b>
UNLESS OTHERWISE SPECIFIED
FRACTIONS +/-
3 PLACE DECIMALS +/-
2 PLACE DECIMALS +/-
1 PLACE DECIMALS +/-
ANGLES
SEE SWINGMASTER SPECIFICATION
G-1 FOR TOLERANCES NOT SPECIFIED
DIMENSIONS ARE IN INCHES
DO NOT SCALE DRAWING
SCALE: 1=4

<b>SWINGMASTER CORPORATION</b>	
11415 MELROSE AVENUE FRANKLIN PARK, ILLINOIS 60131	
<b>FRONT &amp; REAR LIGHTS INSTALLATION</b>	
MODEL SL180-15	
DRAWN BY: J.K.	DRAWING NO. H-424
DATE: 9-11-98	

MACHINE SECTION 1

MODEL SL180-13 SWINGLOADER ELECTRICAL SYSTEM

ASSEMBLY NUMBER	DESCRIPTION
1805965	REAR LIGHTS INSTALLATION

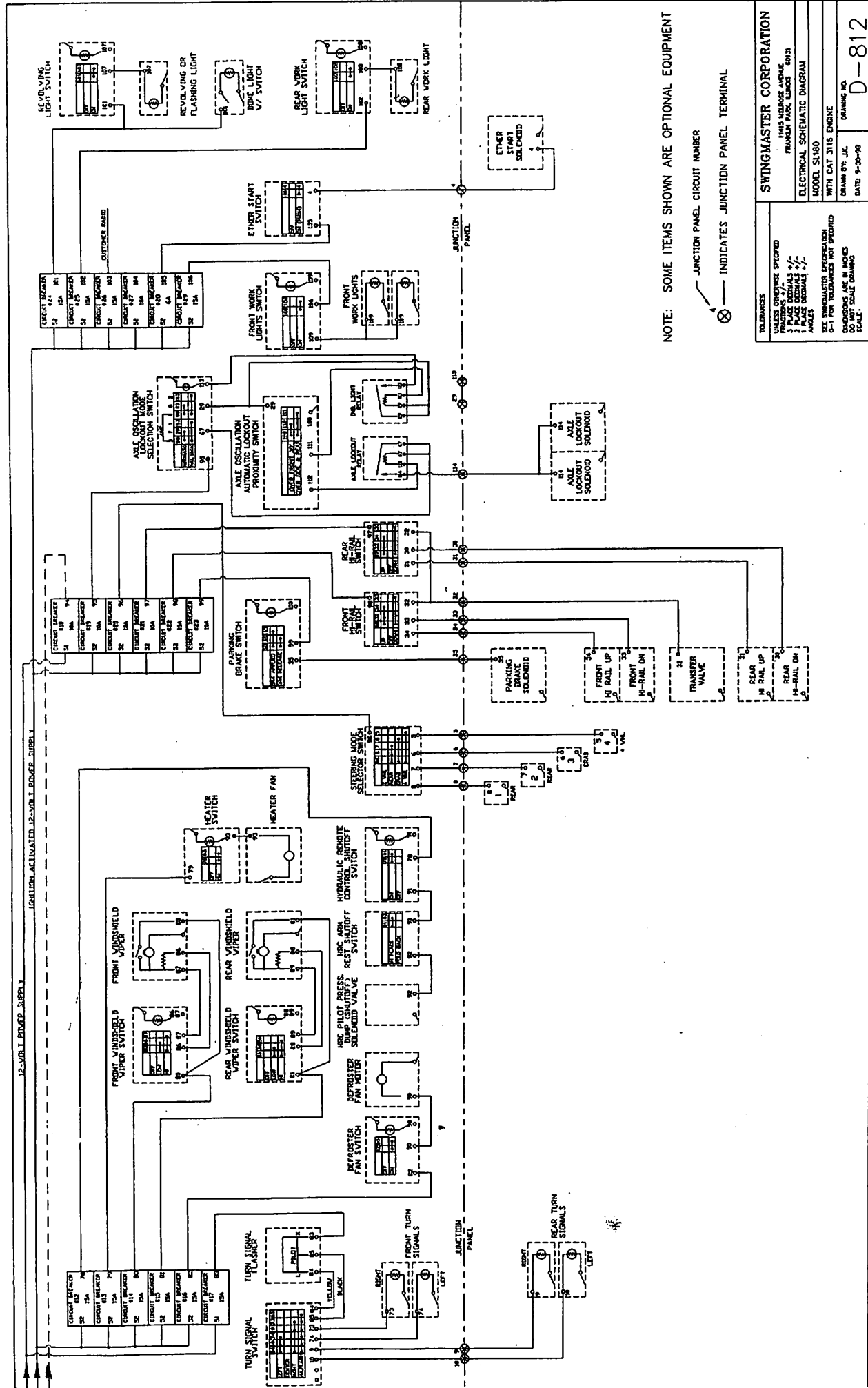
ITEM NO.	PART NUMBER	DESCRIPTION	QTY. USED
002	1800300	6" DIAMETER LIGHT - 1,600 C.P.	4.00
003	1800308	SIGNAL LIGHT	2.00
004	1801411	BACK-UP ALARM	1.00
005	1800432	H.H.C.S. 1/4-20 X 3 3/4" LONG	2.00
006	1800510	HEX NUT 1/4-20	2.00
007	1800567	1/4" LOCK WASHER	2.00

SWINGMASTER CORPORATION  
 11415 MELROSE AVENUE  
 FRANKLIN PARK, ILLINOIS 60131

TEL: (847) 451-1224







NOTE: SOME ITEMS SHOWN ARE OPTIONAL EQUIPMENT

○ JUNCTION PANEL CIRCUIT NUMBER  
 ⊗ INDICATES JUNCTION PANEL TERMINAL

<b>SWINGMASTER CORPORATION</b> 1145 INDIAN AVENUE FRANKFORD, ILL. 60131	
<b>ELECTRICAL SCHEMATIC DIAGRAM</b> MODEL S1180 WITH CAT. 3116 ENGINE	
TOLERANCES UNLESS OTHERWISE SPECIFIED FRACTIONS 1/16" DECIMALS 0.005" HOLE DIMENSIONS 1/16" ANGLES SHOWN	SEE SWINGMASTER SPECIFICATION C-1 FOR DIMENSIONS NOT SHOWN ALL DIMENSIONS IN INCHES UNLESS OTHERWISE SPECIFIED
DRAWN BY: J.A. DATE: 9-30-98	DRAWING NO. <b>D-812</b>