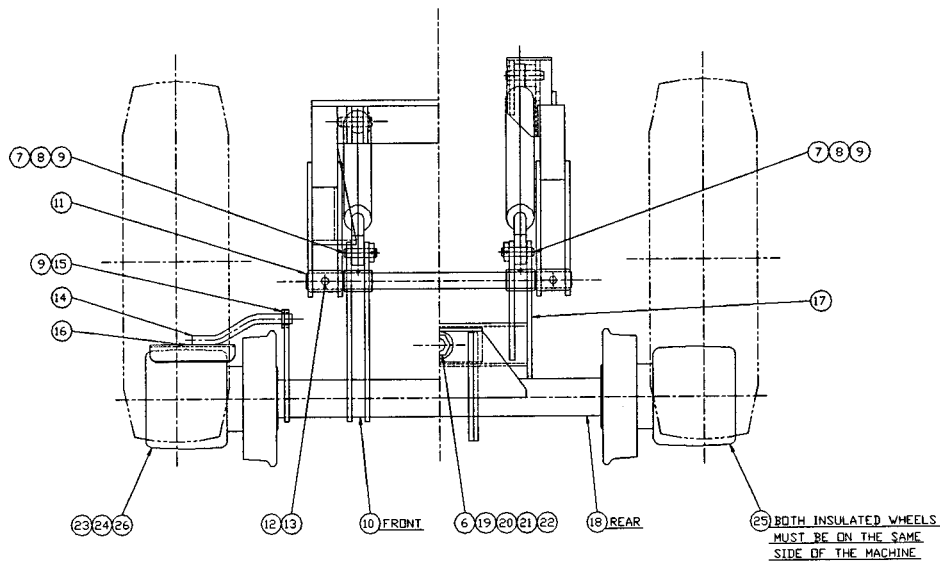


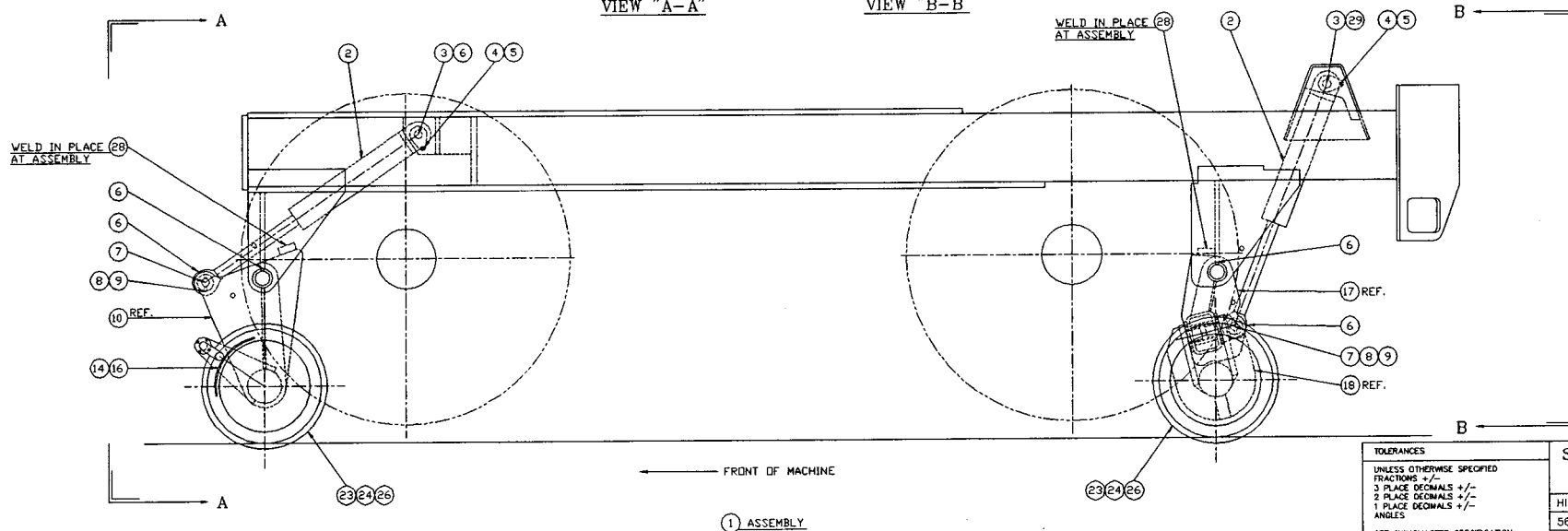


SECTION X
HI-RAIL



VIEW "A-A"

VIEW "B-B"



TOLERANCES
UNLESS OTHERWISE SPECIFIED
FRACTIONS +/—
3 PLACE DECIMALS +/—
2 PLACE DECIMALS +/—
1 PLACE DECIMALS +/—
ANGLES
SEE SWINGMASTER SPECIFICATION
G-1 FOR TOLERANCES NOT SPECIFIED
DIMENSIONS ARE IN INCHES
DO NOT SCALE DRAWING
SCALE: 1"=10"

SWINGMASTER CORPORATION

11415 MELROSE AVENUE
FRANKLIN PARK, ILLINOIS 60131

HI-RAIL INSTALLATION

56 1/2 INCH GAGE

MODEL 361

DRAWN BY: R.O.

DATE: 9-29-88

DRAWING NO.

D-196

MACHINE

SECTION

27

MODEL 361 SWINGLOADER

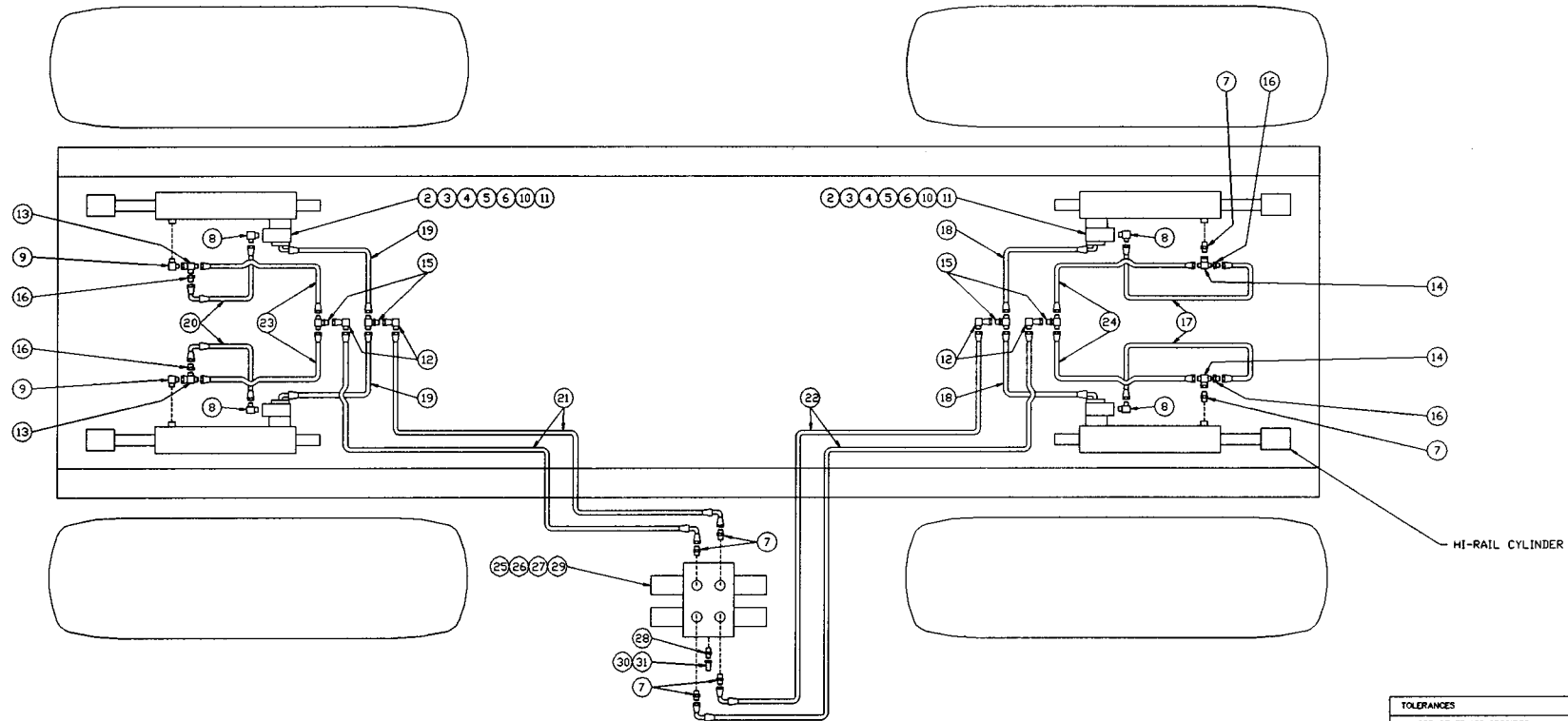
HI-RAIL RAILROAD WHEEL

ASSEMBLY		DESCRIPTION	QTY
NUMBER			
1802099		HI-RAIL INSTALLATION	
ITEM NO.	PART NUMBER	DESCRIPTION	QTY USED
			0
2	1802100	HI-RAIL CYLINDER	4
3	1802101	PIN - 1 1/2" DIA. X 4 7/8" LONG	4
4	1800452	H.H.C.S. 3/8-16 X 1" LONG	4
5	1800568	3/8" LOCK WASHER	4
6	1800663	STRAIGHT 1/8" MALE-PIPE GREASE FITTING	13
7	1802561	PIN - 1 1/2" DIA. X 5 1/4" LONG	4
8	1802103	H.H.C.S. 3/8-24 X 4" LONG	4
9	1802104	ESNA NUT 3/8-24	12
10	1802105	FRONT HI-RAIL ROCKER ARM & AXLE TUBE	1
11	1802106	PIN - 2 1/2" DIA. X 43" LONG	2
12	1800498	H.H.C.S. 3/4-10 X 5" LONG	2
13	1800522	ESNA HEX NUT 3/4-10	2
14	1802107	HI-RAIL GUARD WELDMENT	2
15	1802108	H.H.C.S. 3/8-24 X 1 3/4" LONG	8
16	1801050	LABEL- DANGER PINCH POINTS	2
17	1802109	REAR HI-RAIL ROCKER ARM WELDMENT	1
18	1802110	REAR HI-RAIL AXLE TUBE WELDMENT	1
19	1800260	PIN WELDMENT	1
20	1800181	BRONZE BUSHING - 2" x 2-1/2"	2
21	1800561	1 1/2" FLAT WASHER	1
22	1800542	ESNA HEX NUT 1 1/2-12	1
23	1801455	TRACK WHEEL END ASSEMBLY	4
27	1800266	WRENCH ASSEMBLY (FOR BEARING LOCKNUT)	1
28	1802111	HI-RAIL TRAVEL STOP BLOCK	4

SWINGMASTER CORPORATION
 11415 MELROSE AVENUE
 FRANKLIN PARK, ILLINOIS 60131

TEL: (847) 451-1224

← FRONT OF MACHINE



① INSTALLATION

TOLERANCES		SWINGMASTER CORPORATION	
UNLESS OTHERWISE SPECIFIED		11415 MELROSE AVENUE	
FRACTIONS +/-		FRANKLIN PARK, ILLINOIS 60131	
3 PLACE DECIMALS +/-		HI-RAIL CONTROL VALVE LINES & FITTINGS	
2 PLACE DECIMALS +/-		MODEL 361	
1 PLACE DECIMALS +/-		DRAWN BY: R.D.	
ANGLES		DATE: 2-9-89	
SEE SWINGMASTER SPECIFICATION		DRAWING NO.	
0-1 FOR TOLERANCES NOT SPECIFIED		D-257	
DIMENSIONS ARE IN INCHES			
DO NOT SCALE DRAWING			
SCALE: 1"=8"			

MACHINE

SECTION

27

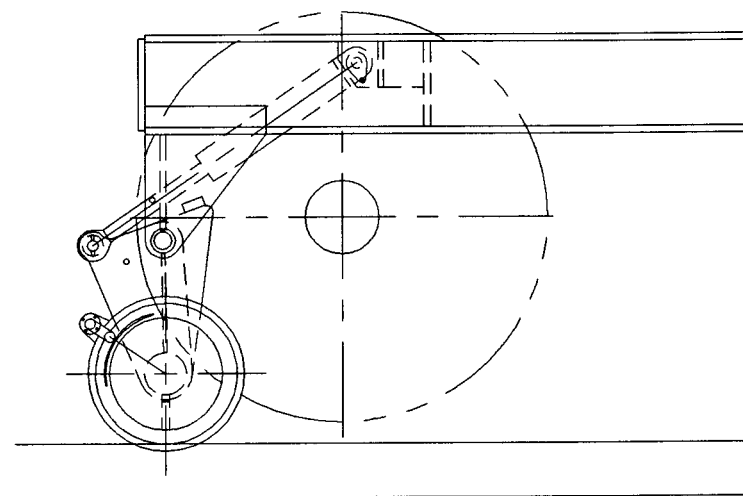
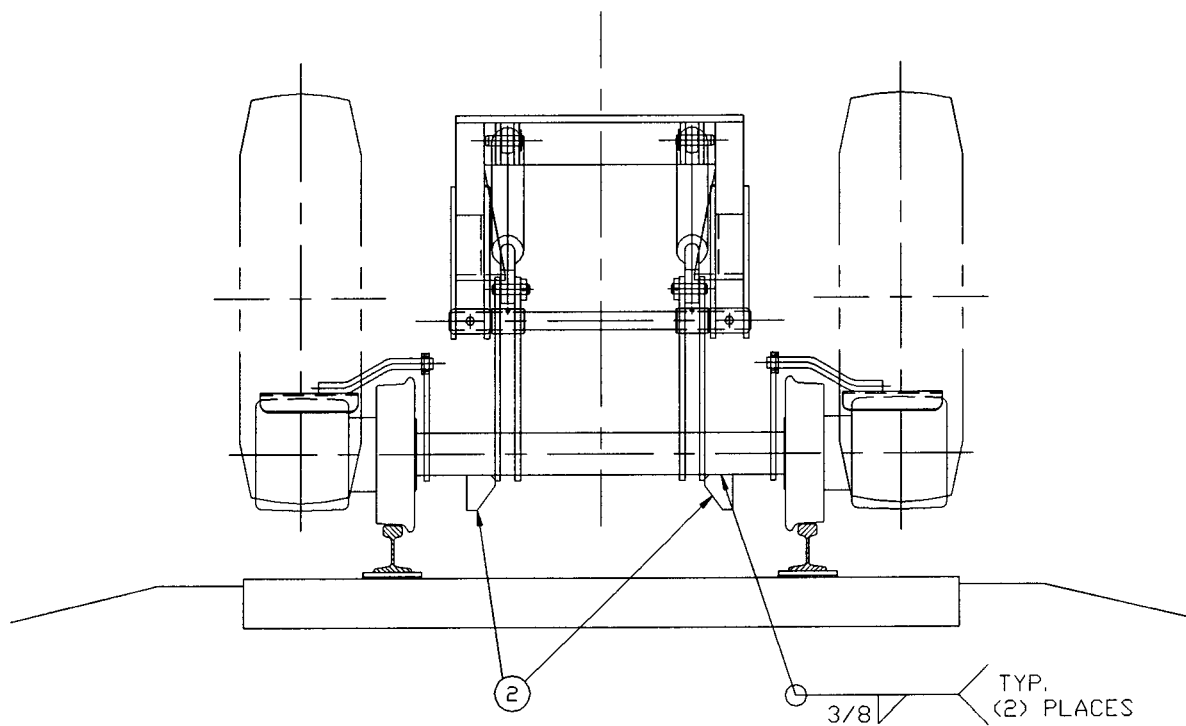
MODEL 361 SWINGLOADER

HI-RAIL RAILROAD WHEEL

ASSEMBLY NUMBER		DESCRIPTION	
1802511		HI-RAIL CONTROL VALVE LINES & FITTINGS	
ITEM NO.	PART NUMBER	DESCRIPTION	QTY USED
2	1800210	COUNTERBALANCE VALVE	4
3	1800454	H.H.C.S. 3/8-16 X 1 1/4" LONG	8
4	1800462	H.H.C.S. 3/8-16 X 3" LONG	8
5	1800463	H.H.C.S. 3/8-16 X 3 1/2" LONG	8
6	1800568	3/8" LOCK WASHER	24
7	1800765	STRAIGHT MALE 1/2 O-RING TO 1/2 TUBE	6
8	1800794	90 DEG MALE ELBOW 3/8 O-RING TO 3/8 TUBE	4
9	1800796	90 DEG MALE ELBOW 1/2 O-RING TO 1/2 TUBE	2
10	1800817	3/4" O-RING FOR SPLIT FLANGE HEAD	4
11	1800823	3/4" SPLIT FLANGE CLAMP HALF	8
12	1800853	90 DEG TUBE ELBOW 1/2 M TO 1/2 F SWIVEL	4
13	1800859	1/2 TUBE RUN TEE M-F SWIVEL-M	2
14	1800883	1/2 TUBE BRANCH TEE M-M-F-SWIVEL	2
15	1801009	1/2 TUBE MALE BULKHEAD BRANCH TEE	4
16	1802381	STRAIGHT TUBE ADAPTER 3/8-M TO 1/2-F	4
17	1802512	HOSE ASSEMBLY 1503-6	2
18	1802513	HOSE ASSEMBLY 2781-8	2
19	1802514	HOSE ASSEMBLY 2781-8	2
20	1801602	HOSE ASSEMBLY 1503-6	2
21	1802515	HOSE ASSEMBLY 2781-8	2
22	1802516	HOSE ASSEMBLY 2781-8	2
23	1802517	HOSE ASSEMBLY 2781-8	2
24	1802518	HOSE ASSEMBLY 2781-8	2
25	1800443	H.H.C.S. 5/16-18 X 1" LONG	4
26	1800512	HEX NUT 5/16-18	4
27	1800074	5/16" LOCK WASHER	4
28	1800764	STRAIGHT MALE 1/2 O-RING TO 3/8 TUBE	1
29	1802562	HI-RAIL CONTROL VALVE	1
30	1800876	DUST CAP	1
31	1801668	3/8" MALE QUICK DISCONNECT	1

SWINGMASTER CORPORATION
11415 MELROSE AVENUE
FRANKLIN PARK, ILLINOIS 60131

TEL: (847) 451-1224



1 INSTALLATION

TOLERANCES

UNLESS OTHERWISE SPECIFIED

FRACTIONS +/-

3 PLACE DECIMALS +/-

2 PLACE DECIMALS +/-

1 PLACE DECIMALS +/-

ANGLES

SEE SWINGMASTER SPECIFICATION
G-1 FOR TOLERANCES NOT SPECIFIED

DIMENSIONS ARE IN INCHES
DO NOT SCALE DRAWING
SCALE:

SWINGMASTER CORPORATION

11415 MELROSE AVENUE
FRANKLIN PARK, ILLINOIS 60131

FRONT DE-RAIL GUARD INSTALLATION

MODEL 361

DRAWN BY: B.W.

DATE: 4-19-90

DRAWN

214

SWINGMASTER CORPORATION

PARTS BOOK

MACHINE

SECTION

27

MODEL 361 SWINGLOADER

HI-RAIL RAILROAD WHEEL

ASSEMBLY
NUMBER

DESCRIPTION

1804295

FRONT DE-RAIL GUARD INSTALLATION

ITEM
NO.

PART
NUMBER

DESCRIPTION

QTY
USED

2

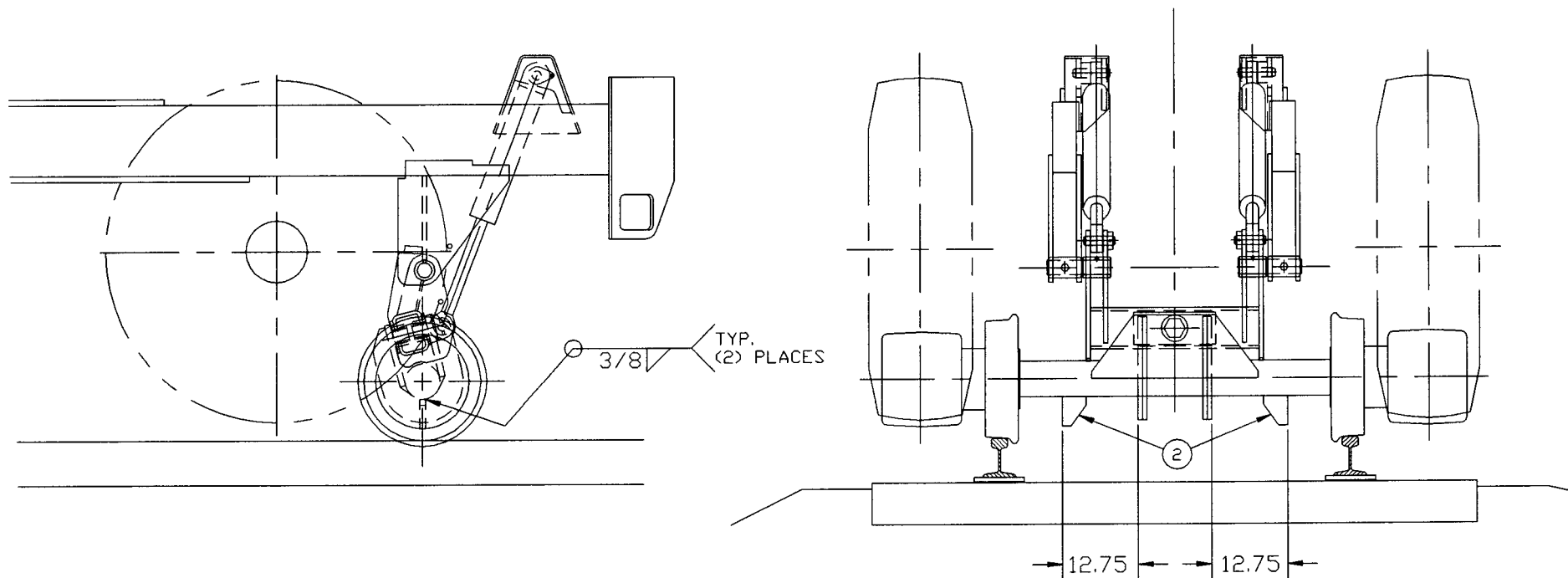
1804296

DE-RAIL GUARD PLATE

1

SWINGMASTER CORPORATION
11415 MELROSE AVENUE
FRANKLIN PARK, ILLINOIS 60131

TEL: (847) 451-1224



1 INSTALLATION

TOLERANCES

UNLESS OTHERWISE SPECIFIED
 FRACTIONS +/-
 3 PLACE DECIMALS +/-
 2 PLACE DECIMALS +/-
 1 PLACE DECIMALS +/-
 ANGLES

SEE SWINGMASTER SPECIFICATION
 G-1 FOR TOLERANCES NOT SPECIFIED

DIMENSIONS ARE IN INCHES
 DO NOT SCALE DRAWING
 SCALE:

SWINGMASTER CORPORATION

11415 MELROSE AVENUE
 FRANKLIN PARK, ILLINOIS 60131

REAR DE-RAIL GUARD INSTALLATION

MODEL 361

DRAWN BY: B.W.

DATE: 4-19-90

DRAWN:

214

SWINGMASTER CORPORATION

PARTS BOOK

MACHINE

SECTION

27

MODEL 361 SWINGLOADER

HI-RAIL RAILROAD WHEEL

ASSEMBLY
NUMBER

DESCRIPTION

1804297 REAR DE-RAIL GUARD INSTALLATION

ITEM
NO.

PART
NUMBER

DESCRIPTION

QTY
USED

2

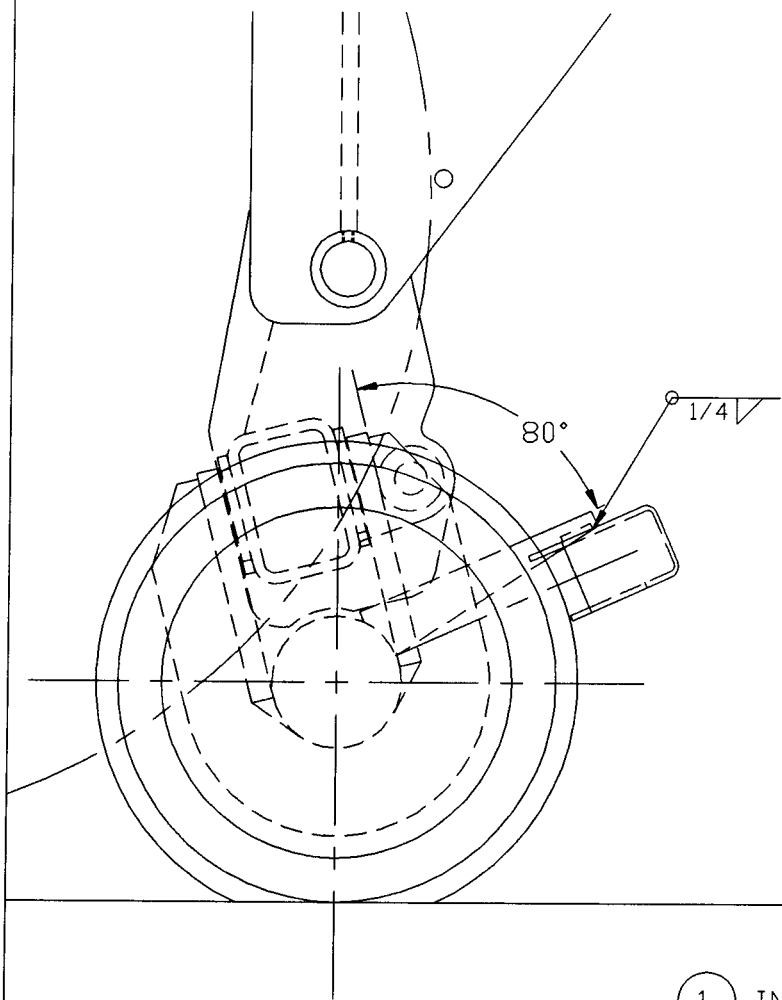
1804298

DE-RAIL GUARD PLATE

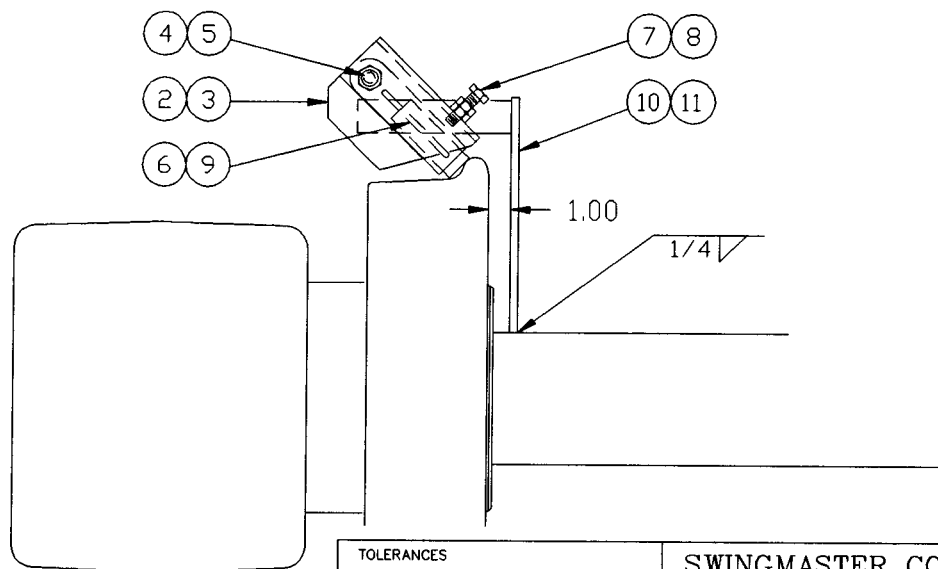
1

SWINGMASTER CORPORATION
11415 MELROSE AVENUE
FRANKLIN PARK, ILLINOIS 60131

TEL: (847) 451-1224



1 INSTALLATION



TOLERANCES

UNLESS OTHERWISE SPECIFIED
FRACTIONS +/-
3 PLACE DECIMALS +/-
2 PLACE DECIMALS +/-
1 PLACE DECIMALS +/-
ANGLES

SEE SWINGMASTER SPECIFICATION
G-1 FOR TOLERANCES NOT SPECIFIED

DIMENSIONS ARE IN INCHES
DO NOT SCALE DRAWING
SCALE:

SWINGMASTER CORPORATION

11415 MELROSE AVENUE
FRANKLIN PARK, ILLINOIS 60131

REAR RAIL WHEEL LUBRICATOR INST'L

MODEL 361

DRAWN BY: B.W.

DATE: 11-20-90

DRAWING NO.

H-300

MACHINE

SECTION

27

MODEL 361 SWINGLOADER

HI-RAIL RAILROAD WHEEL

ASSEMBLY		DESCRIPTION	QTY USED
NUMBER			
1804321		REAR RAIL WHEEL LUBRICATOR INSTALLATION	
ITEM NO.	PART NUMBER	DESCRIPTION	
2	1804322	LEFTHAND LUBRICATOR HOLDER BRACKET	1
3	1804323	RIGHTHAND LUBRICATOR HOLDER BRACKET	1
4	1800475	H.H.C.S. 1/2-13 X 4" LONG	2
5	1800516	ESNA HEX NUT 1/2-13	2
6	1804258	RAIL WHEEL LUBRICATOR HOLDER	2
7	1800472	H.H.C.S. 1/2-13 X 1 3/4" LONG	2
8	1800517	HEX NUT 1/2-13	2
9	1804259	RAIL WHEEL LUBRICATOR BLOCK	2
10	1804324	LEFTHAND LUBRICATOR MOUNTING BRACKET	1
11	1804325	RIGHTHAND LUBRICATOR MOUNTING BRACKET	1

SWINGMASTER CORPORATION
11415 MELROSE AVENUE
FRANKLIN PARK, ILLINOIS 60131

TEL: (847) 451-1224