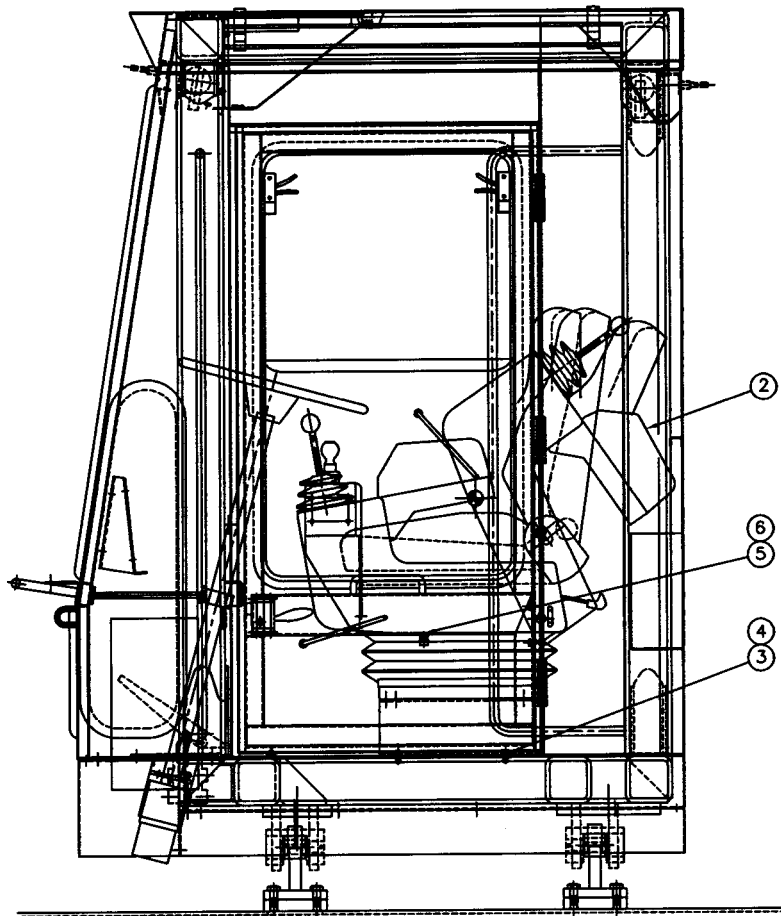


SECTION 0

OPERATOR'S
COMPARTMENT



① INSTALLATION

<p>TOLERANCES</p> <p>UNLESS OTHERWISE SPECIFIED</p> <p>FRACTIONS +/-</p> <p>3 PLACE DECIMALS +/-</p> <p>2 PLACE DECIMALS +/-</p> <p>1 PLACE DECIMALS +/-</p> <p>ANGLES</p> <p>SEE SWINGMASTER SPECIFICATION</p> <p>G-1 FOR TOLERANCES NOT SPECIFIED</p> <p>DIMENSIONS ARE IN INCHES</p> <p>DO NOT SCALE DRAWING</p> <p>SCALE: 1=8</p>		<p>SWINGMASTER CORPORATION</p> <p>11415 MELROSE AVENUE</p> <p>FRANKLIN PARK, ILLINOIS 60131</p>	
		<p>SEAT INSTALLATION</p>	
		<p>FOR MODEL SL180</p>	
		<p>DRAWN BY: J.K.</p> <p>DATE: 4-24-90</p>	<p>DRAWING NO.</p> <p>C-218</p>

MACHINE

SECTION

15

MODEL SL180 SWINGLOADER

OPERATOR'S COMPARTMENT

ASSEMBLY
NUMBER

DESCRIPTION

1803533

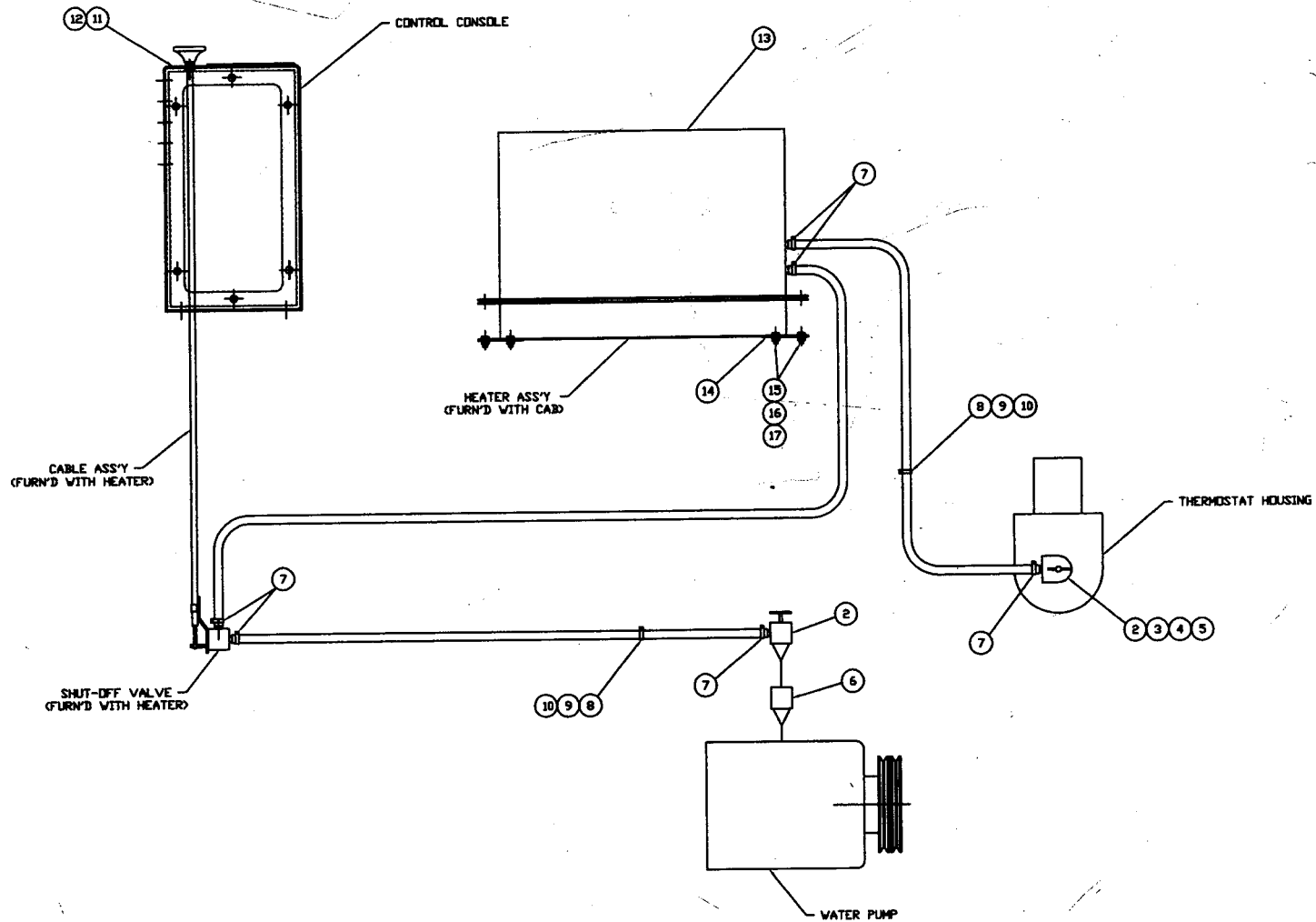
OPERATOR'S SEAT INSTALLATION

ITEM
NO.PART
NUMBER

DESCRIPTION

QTY
USED

2	1806865	SEAT ASS'Y	1
3	1800454	H.H.C.S. 3/8-16 X 1 1/4" LONG	4
4	1800568	3/8" LOCK WASHER	4
5	1803535	SEAT SWITCH	1
6	1803536	SEAT SWITCH MOUNTING BRACKET	1



① INSTALLATION

TOLERANCES
UNLESS OTHERWISE SPECIFIED
FRACTIONS ±
3 PLACE DECIMALS ±
2 PLACE DECIMALS ±
1 PLACE DECIMALS ±
ANGLES
SEE SWINGMASTER SPECIFICATION
0-1 FOR TOLERANCES NOT SPECIFIED
DIMENSIONS ARE IN INCHES
DO NOT SCALE DRAWING
SCALE 1/4

SWINGMASTER CORPORATION	
11415 MELROSE AVENUE FRANKLIN PARK, ILLINOIS 60131	
HEATER INSTALLATION	
FOR MODEL 182	
DRAWN BY: J.J.K.	DRAWING NO.
DATE: 5-3-90	D-423

REVISION
1

MACHINE

SECTION

15

MODEL SL180-12 SWINGLOADER

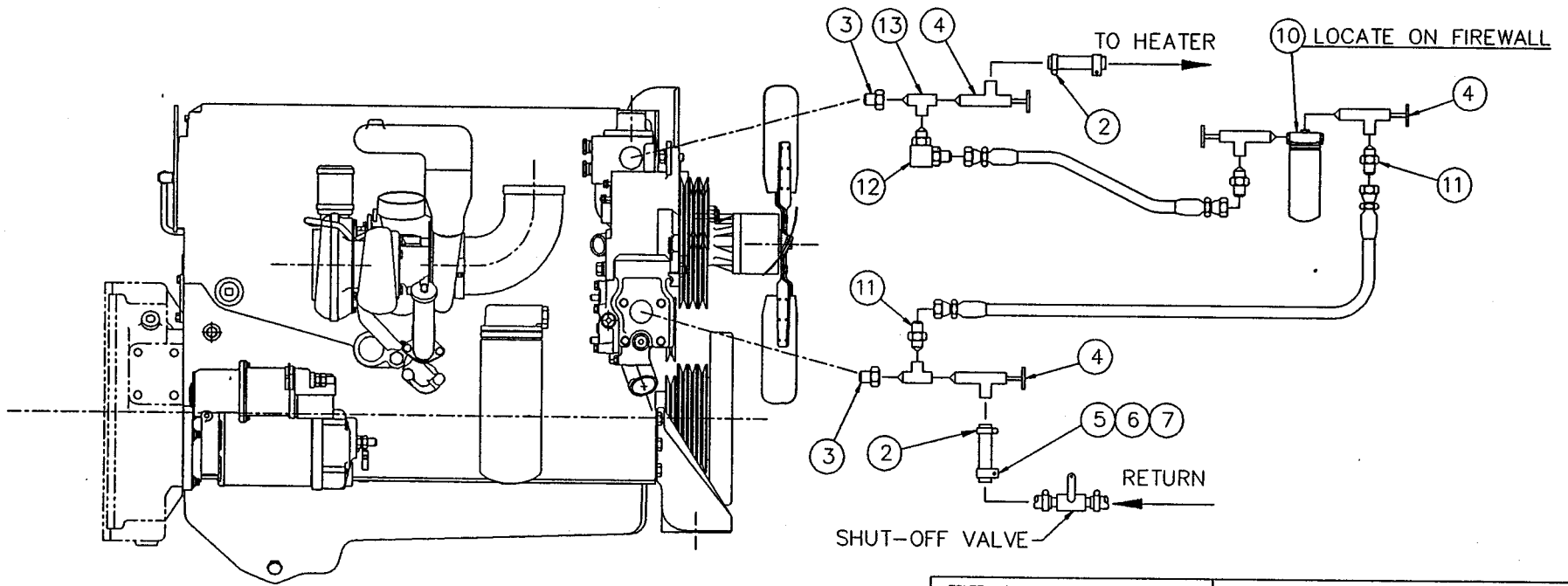
OPERATOR'S COMPARTMENT

ASSEMBLY
NUMBER

DESCRIPTION

1803596 HEATER INSTALLATION

ITEM NO.	PART NUMBER	DESCRIPTION	QTY USED
2	1801305	SHUT OFF VALVE	2
3	1800293	PIPE COUPLING-3/8"	1
4	1800962	STEEL PIPE NIPPLE 3/8" X 3"	1
5	1800906	STRAIGHT PIPE REDUCER BUSHING 1/2 TO 3/8	1
6	1800908	STRAIGHT PIPE REDUCER BUSHING 3/4 TO 3/8	1
7	1800692	1 3/4" HOSE CLAMP	6
8	1800743	1 1/16" DIAMETER CLAMP	2
9	1800450	H.H.C.S. 3/8-16 X 5/8" LONG	2
10	1800568	3/8" LOCK WASHER	2
11	1801304	NAME PLATE-(IN-COLD OUT-HOT)	1
12	1800845	1/8" POP RIVET	2
13	8700858	HEATER ASSEMBLY	1
14	1803740	FILTER BOX CORNER PLATE	4
15	1800442	H.H.C.S. 5/16-18 X 3/4" LONG	8
16	1800512	HEX NUT 5/16-18	8
17	1800074	5/16" LOCK WASHER	8



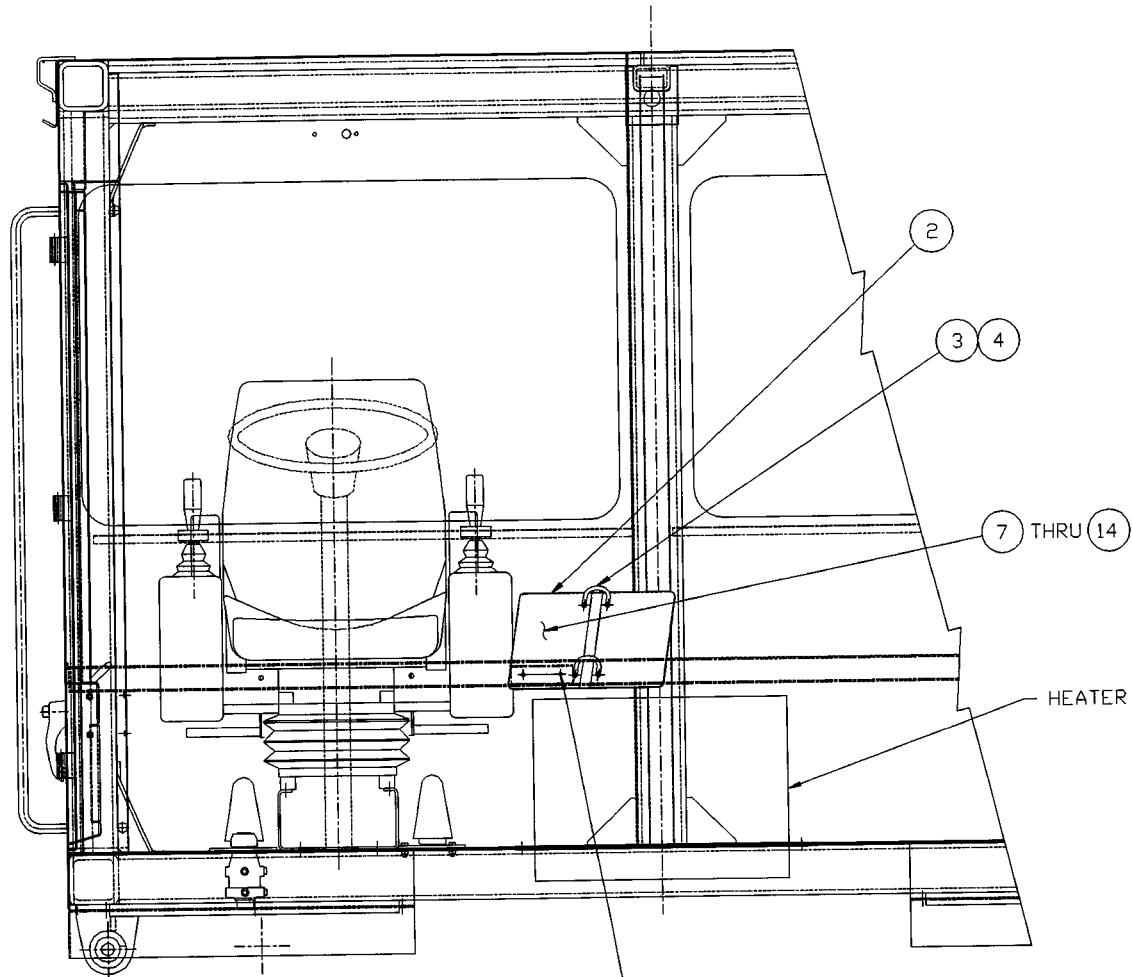
① INSTALLATION

<p>TOLERANCES</p> <p>UNLESS OTHERWISE SPECIFIED</p> <p>FRACTIONS +/-</p> <p>3 PLACE DECIMALS +/-</p> <p>2 PLACE DECIMALS +/-</p> <p>1 PLACE DECIMALS +/-</p> <p>ANGLES</p> <p>SEE SWINGMASTER SPECIFICATION</p> <p>G-1 FOR TOLERANCES NOT SPECIFIED</p> <p>DIMENSIONS ARE IN INCHES</p> <p>DO NOT SCALE DRAWING</p> <p>SCALE:</p>		<p>SWINGMASTER CORPORATION</p> <p>730 INDUSTRIAL DRIVE</p> <p>ELMHURST, ILLINOIS 60126</p>	
		<p>HEATER INSTALLATION</p>	
		<p>MODEL 181 W/ CAT3116DIT ENG.</p>	
		<p>DRAWN BY: R.M.</p> <p>DATE: 2-27-97</p>	<p>DRAWING NO.</p> <p>H1-58</p>

MACHINE	SECTION	15
-----	-----	-----
MODEL 181 SWINGLOADER	OPERATOR'S COMPARTMENT	
-----	-----	-----

ASSEMBLY NUMBER	DESCRIPTION
-----	-----
1805615	HEATER INSTALLATION
-----	-----

ITEM NO.	PART NUMBER	DESCRIPTION	QTY. USED
-----	-----	-----	-----
002	1800692	1 3/4" HOSE CLAMP	6.00
003	1800908	STRAIGHT PIPE REDUCER BUSHING 3/4 TO 3/8	2.00
004	1801305	SHUT OFF VALVE	4.00
005	1800743	1 1/16" DIAMETER CLAMP	2.00
006	1800450	H.H.C.S. 3/8-16 X 5/8" LONG	2.00
007	1800568	3/8" LOCK WASHER	2.00
008	1801304	NAME PLATE-(IN-COLD OUT-HOT)	1.00
009	1800845	1/8" POP RIVET	2.00
010	8704051	WATER TREAT FILTER	1.00
011	1800754	STRAIGHT MALE 3/8 PIPE TO 3/8 TUBE	3.00
012	1800781	90 DEG MALE ELBOW 3/8 PIPE TO 3/8 TUBE	1.00
013	1800913	3/8 PIPE SERVICE TEE M-F-F	2.00
-----	-----	-----	-----



5 1/4-20 TAP
(2) HOLES
6

1 INSTALLATION

TOLERANCES		SWINGMASTER CORPORATION	
UNLESS OTHERWISE SPECIFIED		11415 MELROSE AVENUE	
FRACTIONS +/-		FRANKLIN PARK, ILLINOIS 60131	
3 PLACE DECIMALS +/-		LOAD RATINGS & OPERATING INSTRUCTIONS	
2 PLACE DECIMALS +/-		INSTALLATION	
1 PLACE DECIMALS +/-		MODEL SL180-20	
ANGLES		DRAWN BY: J.K.	DRAWING NO.
SEE SWINGMASTER SPECIFICATION		DATE: 12-10-98	D-818
G-1 FOR TOLERANCES NOT SPECIFIED			
DIMENSIONS ARE IN INCHES			
DO NOT SCALE DRAWING			
SCALE: 1/8			

MACHINE

SECTION

15

MODEL SL180 SWINGLOADER

OPERATOR'S COMPARTMENT

ASSEMBLY
NUMBER

DESCRIPTION

1806212

LOAD RATINGS & OPERATING INSTRUCTION INS

ITEM NO.	PART NUMBER	DESCRIPTION	QTY. USED
2	1803628	INSTRUCTIONS MOUNTING PLATE	1.00
3	1800678	1 5/8" MUFFLER CLAMP	2.00
4	1800512	HEX NUT 5/16-18	4.00
5	1800430	H.H.C.S. 1/4-20 X 1/2" LONG	2.00
6	1800567	1/4" LOCK WASHER	2.00
7	1806213	OPERATING INSTRUCTIONS COVER PLATE	1.00
8	1806214	LOAD CHART RATINGS	1.00
9	1801317	H.H.C.S. 3/4-10 X 5-1/2" LONG	1.00
10	1806215	LOAD RATING INSTRUCTION PLATE	1.00
11	1801370	LOAD RATING INSTRUCTIONS AND DEFINITION	1.00
12	1806216	TIRE INFLATION & ATT. WEIGHT CHART	1.00
13	1803639	HAND SIGNAL COVER PLATE	1.00
14	1803638	HAND SIGNAL CHARTS	1.00

MACHINE

SECTION

15

MODEL SL180 SWINGLOADER

OPERATOR'S COMPARTMENT

ASSEMBLY
NUMBER

DESCRIPTION

1801260

TOOL KIT

ITEM NO.	PART NUMBER	DESCRIPTION	QTY. USED
1	1801269	SPECIAL SOCKET WRENCH	1.00
2	1801270	PLIER	1.00
3	1801271	SCREW DRIVER	1.00
4	1800370	WRENCH	1.00
5	1800371	HANDLE	1.00
6	1800375	GREASE GUN	1.00
7	1800377	GREASE GUN HOSE	1.00
8	1801069	3/8" FEMALE COUPLER BODY	1.00