



SECTION H
PARKING BRAKE SYSTEM

SWINGMASTER CORPORATION

PARTS BOOK

MACHINE

SECTION

MODEL 361 SWINGLOADER

PARKING BRAKE SYSTEM

DESCRIPTION

PARKING BRAKE ASSEMBLY INSTALLATION
PARKING BRAKE ASSEMBLY

PARKING BRAKE LINES AND FITTINGS

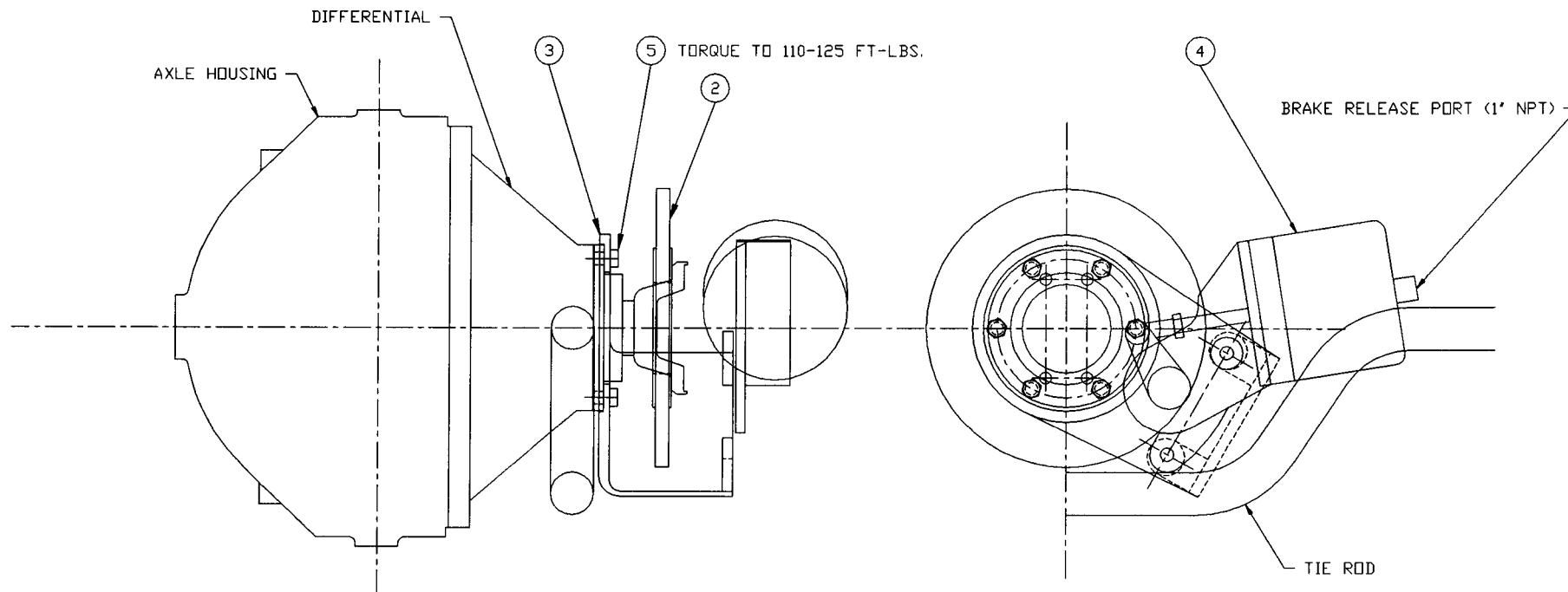
SWINGMASTER CORPORATION

11415 MELROSE AVENUE

FRANKLIN PARK, ILLINOIS 60131

TELEPHONE: (847) 451-1224

← FRONT OF MACHINE



1 INSTALLATION

INSTALLATION NOTE:

1. INSTALL AIR LINE AND APPLY A MINIMUM OF 60 PSI AIR PRESSURE.
2. PLACE CALIPER OVER DISC.
3. ACTUATE CALIPER 10 TIMES BY DROPPING AIR PRESSURE.
4. CHECK CLEARANCE BETWEEN BRAKE AND PADS AND DISC. CLEARANCE SHOULD BE 0.015 INCH MINIMUM AND 0.030 MAXIMUM WITH AIR PRESSURE APPLIED.
5. TO ADJUST CLEARANCE, REMOVE PLASTIC CAP FROM CENTER OF ACTUATOR LEVER. INSERT 1/4" HEX WRENCH AND ROTATE SHAFT TO OBTAIN PROPER CLEARANCE. REPLACE PLASTIC CAP.

WARNING:

DO NOT ATTEMPT TO OPEN THE SPRING CHAMBER.
 DANGEROUS SPRING PRELOAD.
 SEVERE INJURY MAY RESULT.

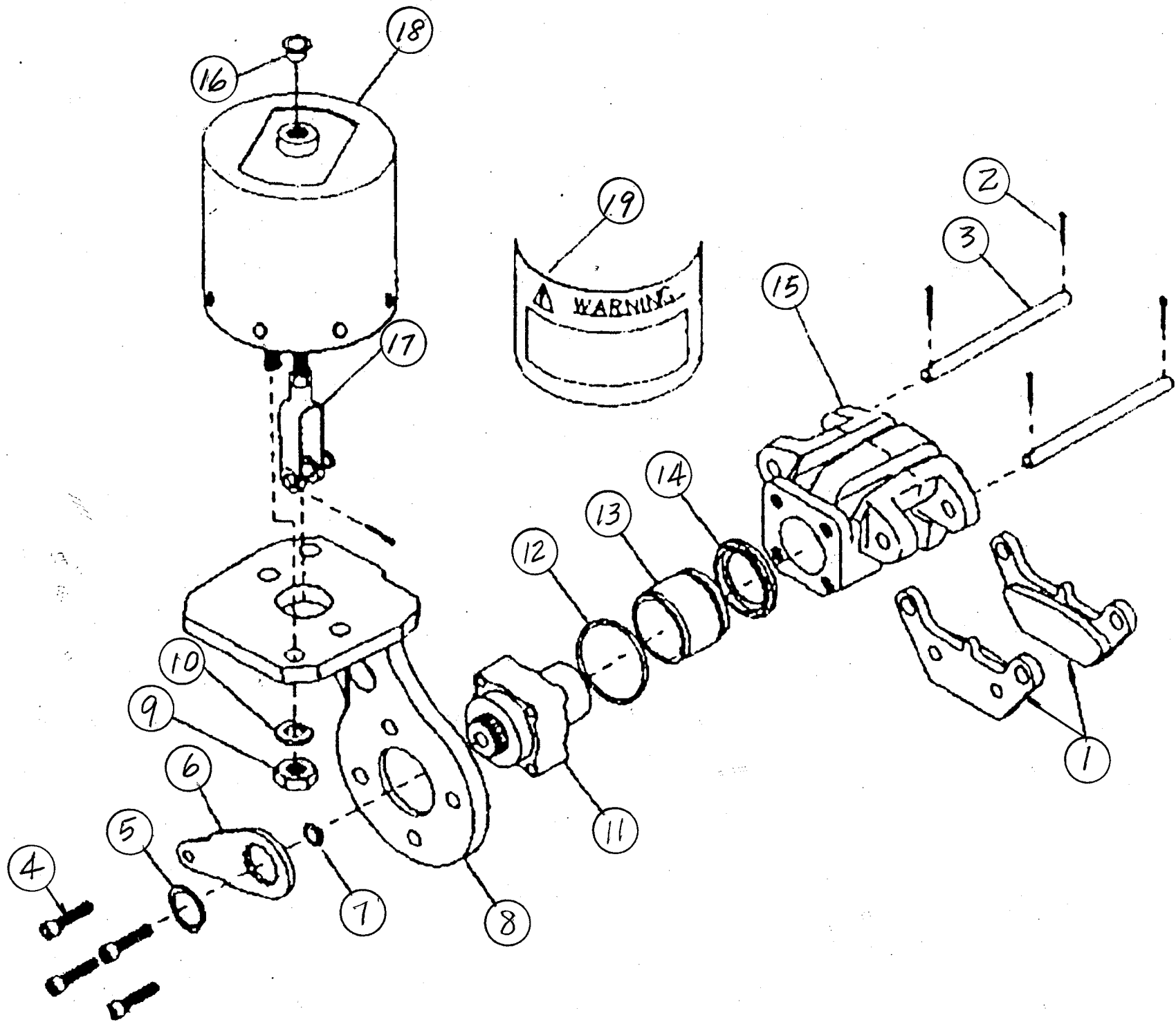
TO SERVICE AIR CHAMBER, SEE GUSTIN BACON BULLETIN.
 HAYES BRAKE RECOMMENDED THAT INEXPERIENCED PERSONNEL
 DO NOT ATTEMPT TO SERVICE THE SPRING CHAMBER.

TOLERANCES UNLESS OTHERWISE SPECIFIED FRACTIONS +/- 3 PLACE DECIMALS +/- 2 PLACE DECIMALS +/- 1 PLACE DECIMALS +/- ANGLES SEE SWINGMASTER SPECIFICATION G-1 FOR TOLERANCES NOT SPECIFIED DIMENSIONS ARE IN INCHES DO NOT SCALE DRAWING SCALE: 1=4	SWINGMASTER CORPORATION 11415 MELROSE AVENUE FRANKLIN PARK, ILLINOIS 60131	
	PARKING BRAKE ASS'Y INSTALLATION SPRING APPLIED AIR RELEASED FOR MODEL 361	
DRAWN BY: J.K. DATE: 8-16-88	DRAWING NO. <div style="font-size: 2em; text-align: right;">C-111</div>	

MACHINE	SECTION	8
-----	-----	-----
MODEL 361 SWINGLOADER	PARKING BRAKE SYSTEM	
-----	-----	-----

ASSEMBLY	DESCRIPTION
NUMBER	-----
-----	-----
1802206	PARKING BRAKE ASSEMBLY INSTALLATION
-----	-----

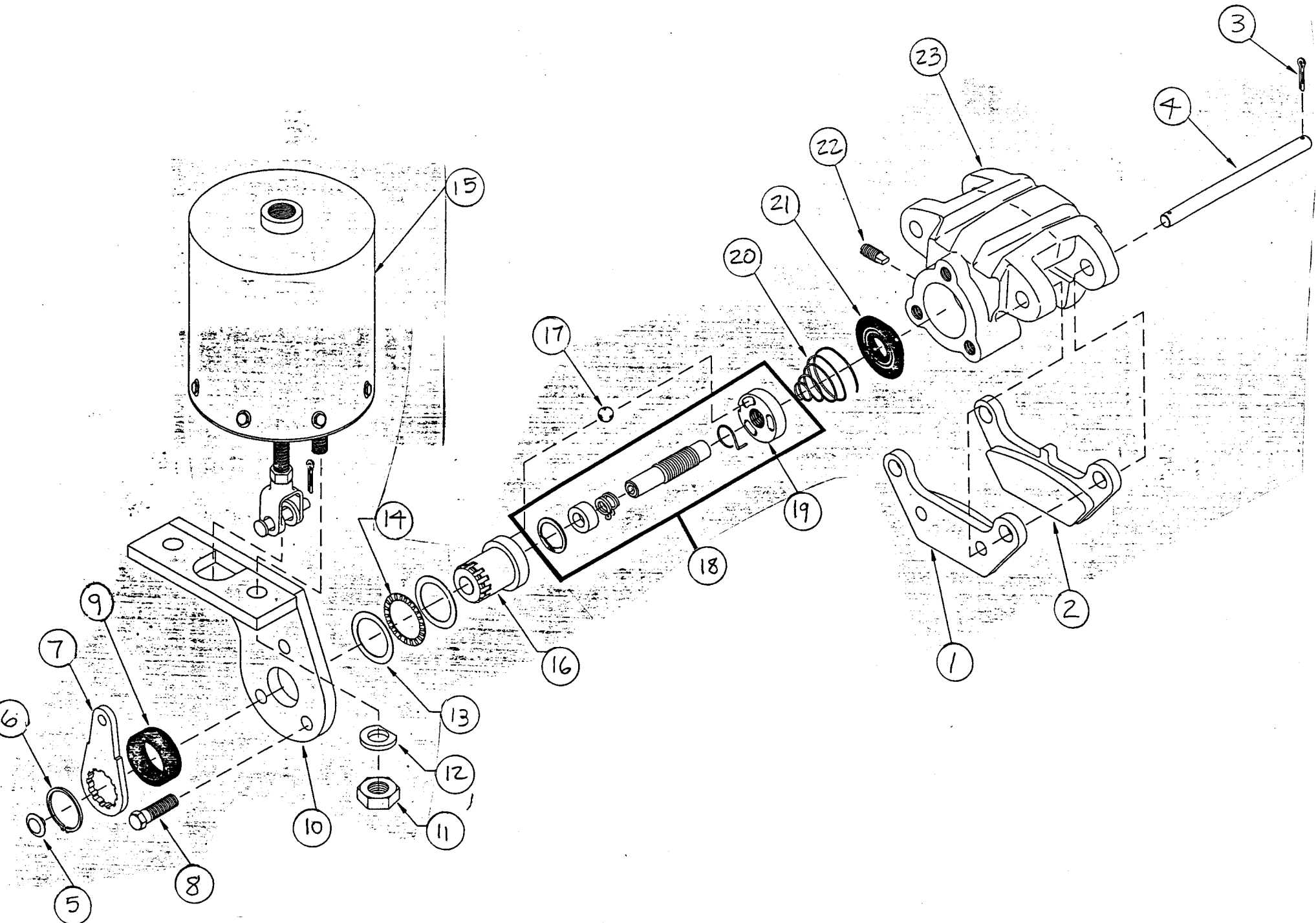
ITEM	PART	DESCRIPTION	QTY.
NO.	NUMBER		USED
2	1802207	YOKE & DISC PLATE WELDMENT	1.00
3	1802208	PARKING BRAKE MOUNTING BRACKET WELDMENT	1.00
4	1802209	PARKING BRAKE ASSEMBLY	1.00
5	1802210	H.H.C.S. 9/16-12 X 1 3/4" LONG	6.00



MACHINE	SECTION	8
-----	-----	-----
MODEL 361 SWINGLOADER	PARKING BRAKE SYSTEM	
-----	-----	-----

ASSEMBLY NUMBER	DESCRIPTION
-----	-----
1802209	PARKING BRAKE ASSEMBLY
-----	-----

ITEM PART NO. NUMBER DESCRIPTION	QTY. USED
-----	-----
001 8702658 PAD & HOLDER ASSEMBLY	2.00
002 8702659 COTTER PIN	4.00
003 8702660 MOUNTING PIN	2.00
004 8704088 COVER BOLT	4.00
005 8704089 RETAINING RING	1.00
006 8702663 LEVER	1.00
007 8704090 CAP PLUG	1.00
008 8704091 BRACKET	1.00
009 8702667 HEX NUT	2.00
010 8702668 WASHER	2.00
011 8704092 CW. ACTUATOR	1.00
012 8702665 DUST BOOT	1.00
013 8704093 PISTON	1.00
014 8702676 DUST BOOT	1.00
015 8704094 CASTING	1.00
016 8704095 CAP PLUG	1.00
017 8704096 CLEVIS	1.00
018 8704097 SPRING ACTUATOR	1.00
019 8704098 WARNING LABEL	1.00
-----	-----



SWINGMASTER CORPORATION**PARTS BOOK**

MACHINE SECTION 8

MODEL 181 SWINGLOADER PARKING BRAKE SYSTEM

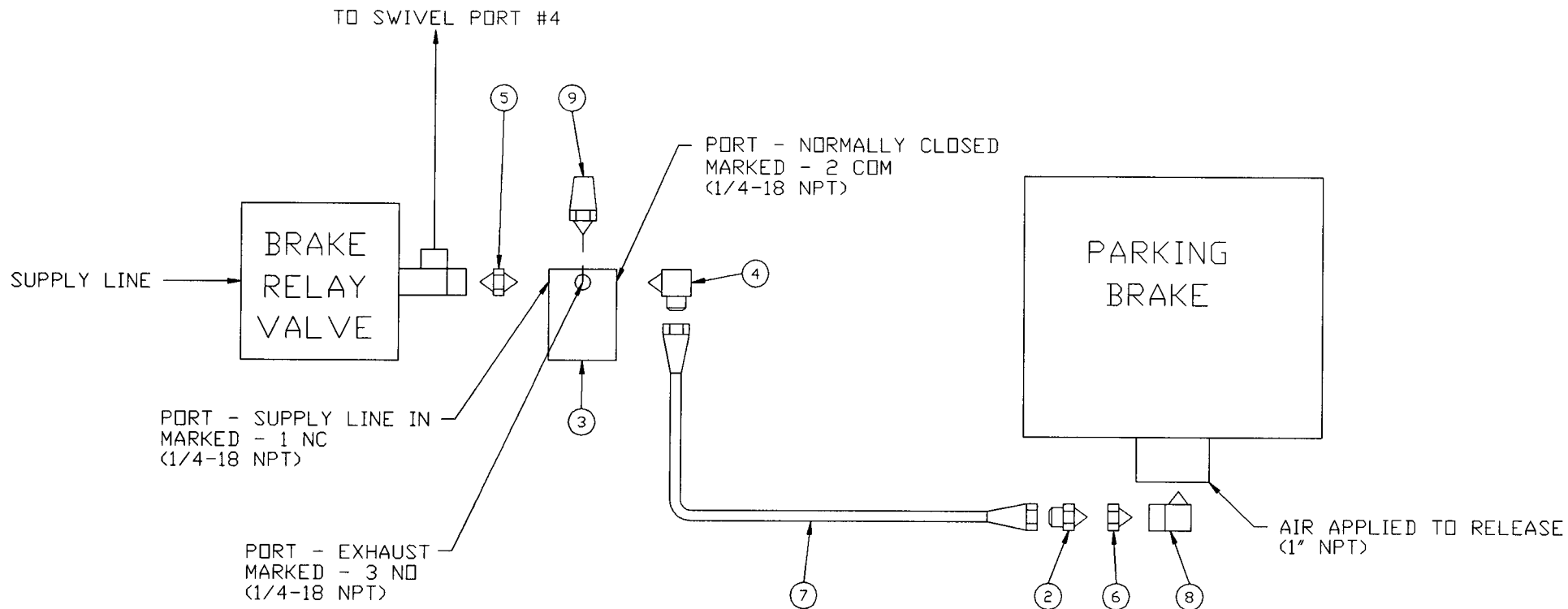
ASSEMBLY
NUMBER DESCRIPTION

1802209 PARKING BRAKE ASSEMBLY

ITEM NO.	PART NUMBER	DESCRIPTION	QTY. USED
1	8702657	PAD & HOLDER ASSEMBLY	1
2	8702658	PAD & HOLDER ASSEMBLY	1
3	8702659	COTTER PIN	4
4	8702660	MOUNTING PIN	2
5	8702661	PLUG	1
6	8702662	RETAINING RING	1
7	8702663	LEVER	1
8	8702664	CAP SCREW	3
9	8702665	DUST BOOT	1
10	8702666	MOUNTING BRACKET	1
11	8702667	HEX NUT	2
12	8702668	WASHER	2
13	8702669	THRUST WASHER	2
14	8702670	THRUST BEARING	1
15	8702671	SPRING ACTUATOR	1
16	8702672	ROTOR	1
17	8702673	BALL	3
18	8702674	SHAFT & STATOR ASSEMBLY	1
19		STATOR (NOT SOLD SEPARATELY)	1
20	8702675	SPRING	1
21	8702676	DUST BOOT	1
22	8702677	KEY	1
23	8702678	CASTING	1

SWINGMASTER CORPORATION
11415 MELROSE AVENUE
FRANKLIN PARK, ILLINOIS 60131

TELEPHONE: (847) 451-1224



① INSTALLATION

TOLERANCES		SWINGMASTER CORPORATION	
UNLESS OTHERWISE SPECIFIED		11415 MELROSE AVENUE	
FRACTIONS +/-		FRANKLIN PARK, ILLINOIS 60131	
3 PLACE DECIMALS +/-		PARKING BRAKE LINES & FITTINGS	
2 PLACE DECIMALS +/-		MODEL 361	
1 PLACE DECIMALS +/-		DRAWN BY: R.O.	
ANGLES		DATE: 1-24-89	
SEE SWINGMASTER SPECIFICATION		DRAWING NO.	
G-1 FOR TOLERANCES NOT SPECIFIED		H-185	
DIMENSIONS ARE IN INCHES			
DO NOT SCALE DRAWING			
SCALE: NONE			

MACHINE

SECTION

8

MODEL 361 SWINGLOADER

PARKING BRAKE SYSTEM

ASSEMBLY
NUMBER

DESCRIPTION

1802505

PARKING BRAKE LINES & FITTINGS

ITEM PART

QTY.

NO. NUMBER DESCRIPTION

USED

2	1801868	STRAIGHT MALE 3/8 PIPE TO 1/4 TUBE	1.00
3	1802506	3 WAY SOLENOID VALVE	1.00
4	1800777	90 DEG MALE ELBOW 1/4 PIPE TO 1/4 TUBE	1.00
5	1800889	STRAIGHT MALE PIPE 1/4" TO 3/8"	1.00
6	1802507	STRAIGHT PIPE REDUCER BUSHING 1 TO 3/8	1.00
7	1802508	HOSE ASSEMBLY 1503-4	1.00
8	1802509	90 DEGREE 1" PIPE ELBOW	1.00
9	1802510	AIR MUFFLER & EXHAUST DIFFUSER - 1/4"	1.00