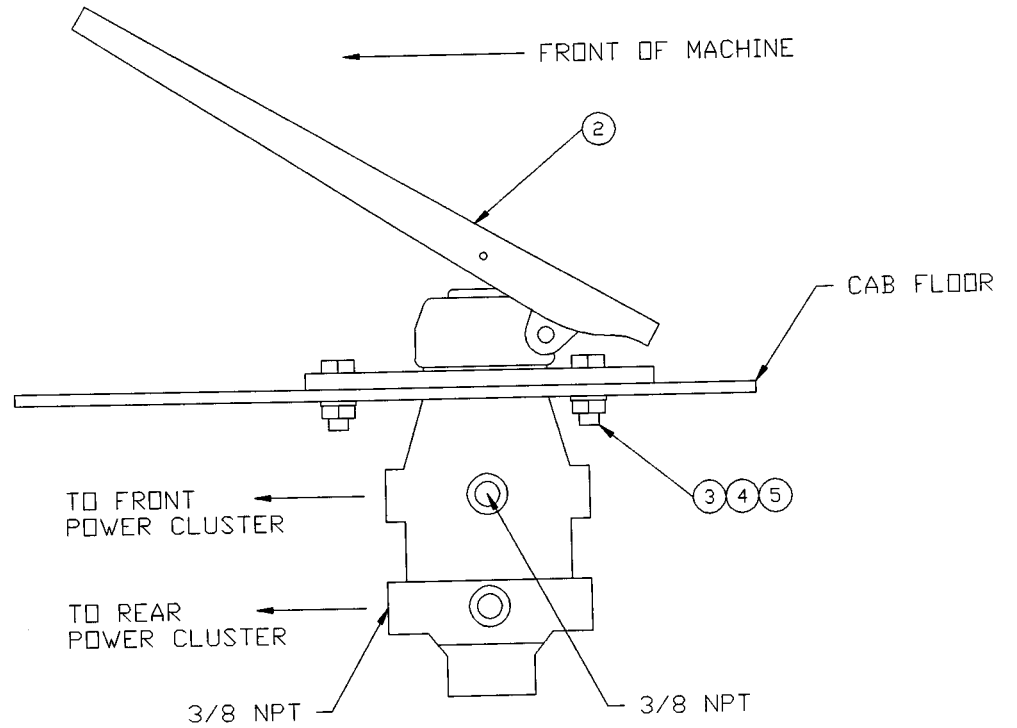
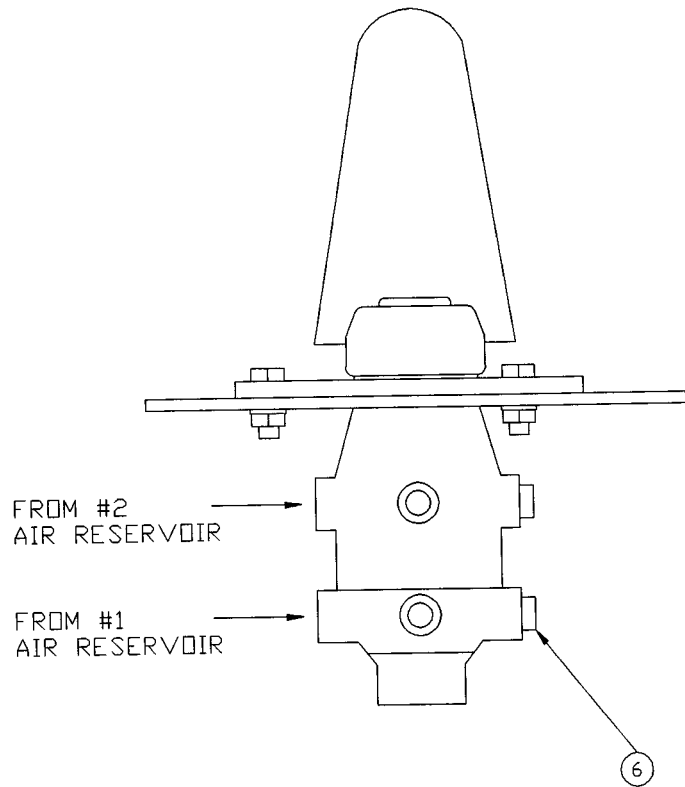


SECTION G

SERVICE
BRAKE
SYSTEM



① INSTALLATION

TOLERANCES
UNLESS OTHERWISE SPECIFIED
FRACTIONS +/-
3 PLACE DECIMALS +/-
2 PLACE DECIMALS +/-
1 PLACE DECIMALS +/-
ANGLES
SEE SWINGMASTER SPECIFICATION
G-1 FOR TOLERANCES NOT SPECIFIED
DIMENSIONS ARE IN INCHES
DO NOT SCALE DRAWING
SCALE: NONE

SWINGMASTER CORPORATION	
11415 MELROSE AVENUE FRANKLIN PARK, ILLINOIS 60131	
BRAKE TREADLE VALVE INSTALLATION	
DRAWN BY: J.K.	DRAWING NO.
DATE: 11-18-88	H-45

MACHINE	SECTION	7
-----	-----	-----
MODEL SL180 SWINGLOADER	SERVICE BRAKE SYSTEM	
-----	-----	-----

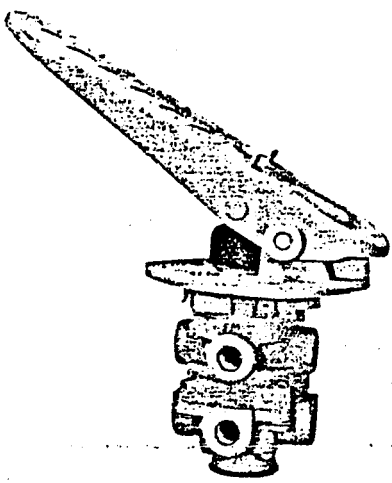
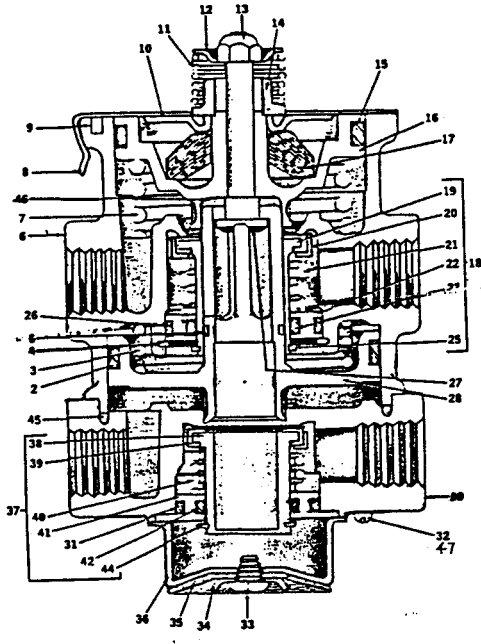
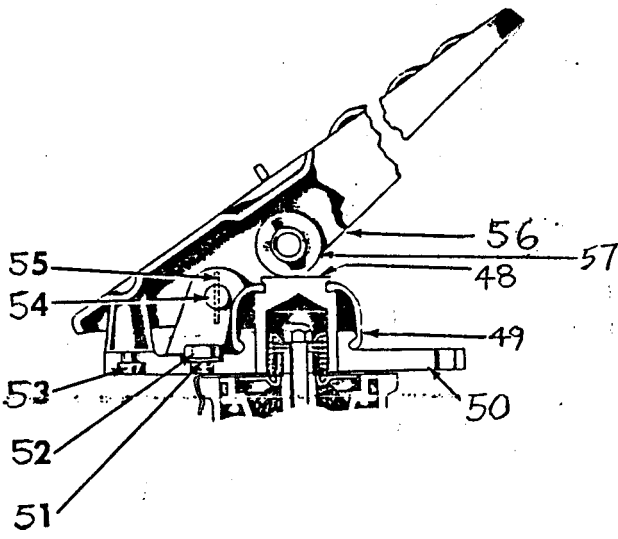
ASSEMBLY
NUMBER

DESCRIPTION

1801209

BRAKE TREADLE VALVE INSTALLATION

ITEM NO.	PART NUMBER	DESCRIPTION	QTY. USED
002	1800135	BRAKE VALVE	1.00
003	1800443	H.H.C.S. 5/16-18 X 1" LONG	3.00
004	1800512	HEX NUT 5/16-18	3.00
005	1800074	5/16" LOCK WASHER	3.00
006	1800655	3/8" PIPE PLUG-SOCKET HEAD	4.00



① ASSEMBLY

MACHINE

SECTION

7

MODEL 361 SWINGLOADER

SERVICE BRAKE SYSTEM

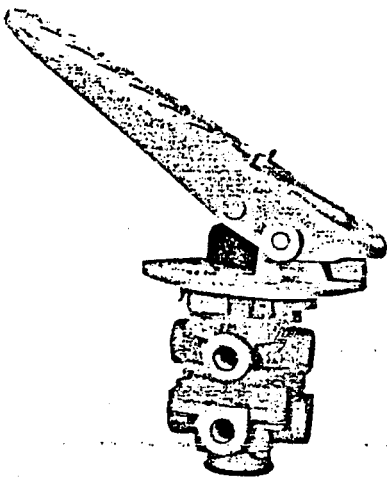
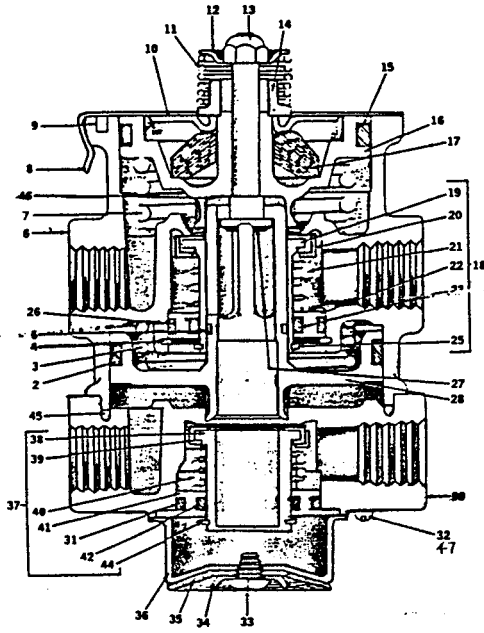
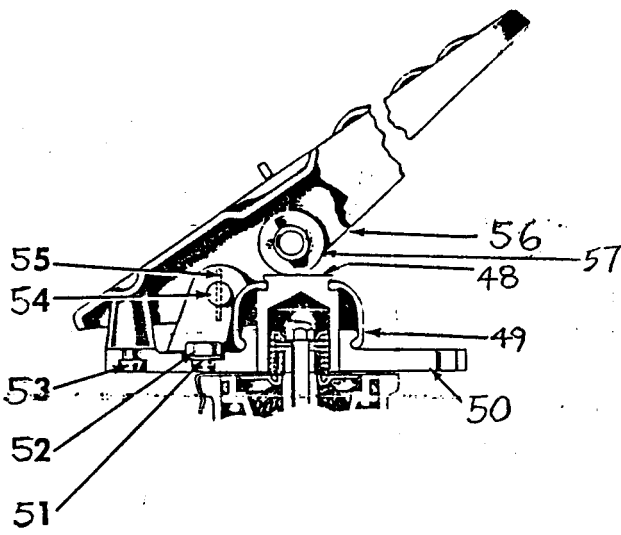
ASSEMBLY
NUMBER

DESCRIPTION

1800135

BRAKE VALVE ASSEMBLY

ITEM NO.	PART NUMBER	DESCRIPTION	QTY. USED
2		O-RING	1
3		RELAY PISTON SPRING	1
4		RETAINING RING	1
5		O-RING	1
6		BODY- NOT SERVICEABLE	1
7		PISTON RETURN SPRING	1
8		RETAINER	1
9		VENT FILTER	1
10		SPRING SEAT	1
11		STEM SPRING	1
12		SPRING GUIDE	1
13		NUT	1
14		SPRING SEAT NUT	1
15		O-RING	1
16		PRIMARY PISTON	1
17		RUBBER SPRING	1
18		INLET & EXHAUST VALVE ASSEMBLY	1
19		INLET & EXHAUST VLAVE	1
20		VALVE RETAINER	1
21		SPRING	1
22		O-RING RETAINER	1
23		O-RING	1
25		RETAINING RING	1
26		O-RING	1
27		STEM	1
28		RELAY PISTON	1
30		BODY- NOT SERVICEABLE	1
31		O-RING	1
32	8700632	MACHINE SCREW	4
33		SCREW	1



① ASSEMBLY

MACHINE

SECTION

7

MODEL 361 SWINGLOADER

SERVICE BRAKE SYSTEM

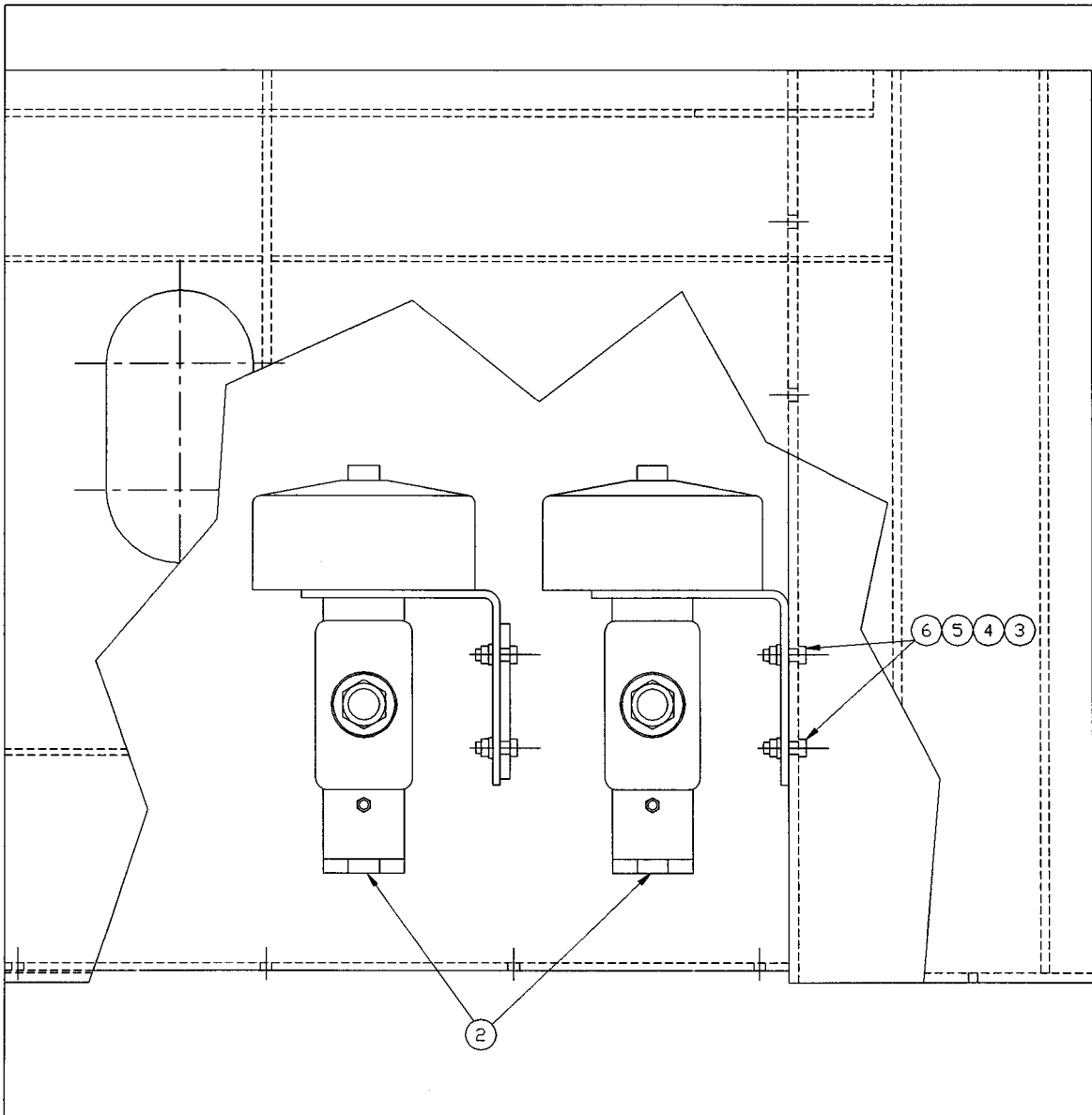
ASSEMBLY
NUMBER

DESCRIPTION

1800135

BRAKE VALVE ASSEMBLY

ITEM NO.	PART NUMBER	DESCRIPTION	QTY. USED
34		DIAPHRAGM WASHER	1
35		DIAPHRAGM	1
36		EXHAUST COVER	1
37		INLET & EXHAUST VALVE ASSEMBLY	1
38		INLET & EXHAUST VALVE	1
39		VALVE RETAINER	1
40		SPRING	1
41		O-RING RETAINER	1
42		O-RING	1
44		RETAINING RING	1
45		O-RING	1
46		RUBBER WASHER	1
47		LOCKWASHER	4
	8700633	MINOR MAINTENANCE KIT INCLUDES ITEMS 2,3,5,7,9,11,13,15,17 18-23,25,26,31,33-35,37-42,44-46	1
	8700634	MAJOR MAINTENANCE KIT INLCUDES ITEMS 4,8,10,12,14,16,27,28,36	1
48	8700635	PLUNGER	1
49	8700636	BOOT	1
50	8700637	MOUNTING PLATE	1
51	8700638	LOCKWASHER	3
52	8700639	CAP SCREW	3
53	8700640	STOP BUTTON	1
54	8700641	FULCRUM PIN	1
55	8700642	COTTER PIN	1
56	8700643	TREADLE	1
57	8700644	ROLLER	1
	8700645	STEEL TREADLE ASSEMBLY - INCLUDES 56,57	1



① INSTALLATION

TOLERANCES
 UNLESS OTHERWISE SPECIFIED
 FRACTIONS +/-
 3 PLACE DECIMALS +/-
 2 PLACE DECIMALS +/-
 1 PLACE DECIMALS +/-
 ANGLES
 SEE SWINGMASTER SPECIFICATION
 G-1 FOR TOLERANCES NOT SPECIFIED
 DIMENSIONS ARE IN INCHES
 DO NOT SCALE DRAWING
 SCALE: 1=4

SWINGMASTER CORPORATION	
11415 MELROSE AVENUE FRANKLIN PARK, ILLINOIS 60131	
MASTER CYLINDER INSTALLATION	
MODEL SL180	
DRAWN BY: J.K.	DRAWING NO.
DATE: 7-28-98	H-417

MACHINE

SECTION

7

MODEL SL180 SWINGLOADER

SERVICE BRAKE SYSTEM

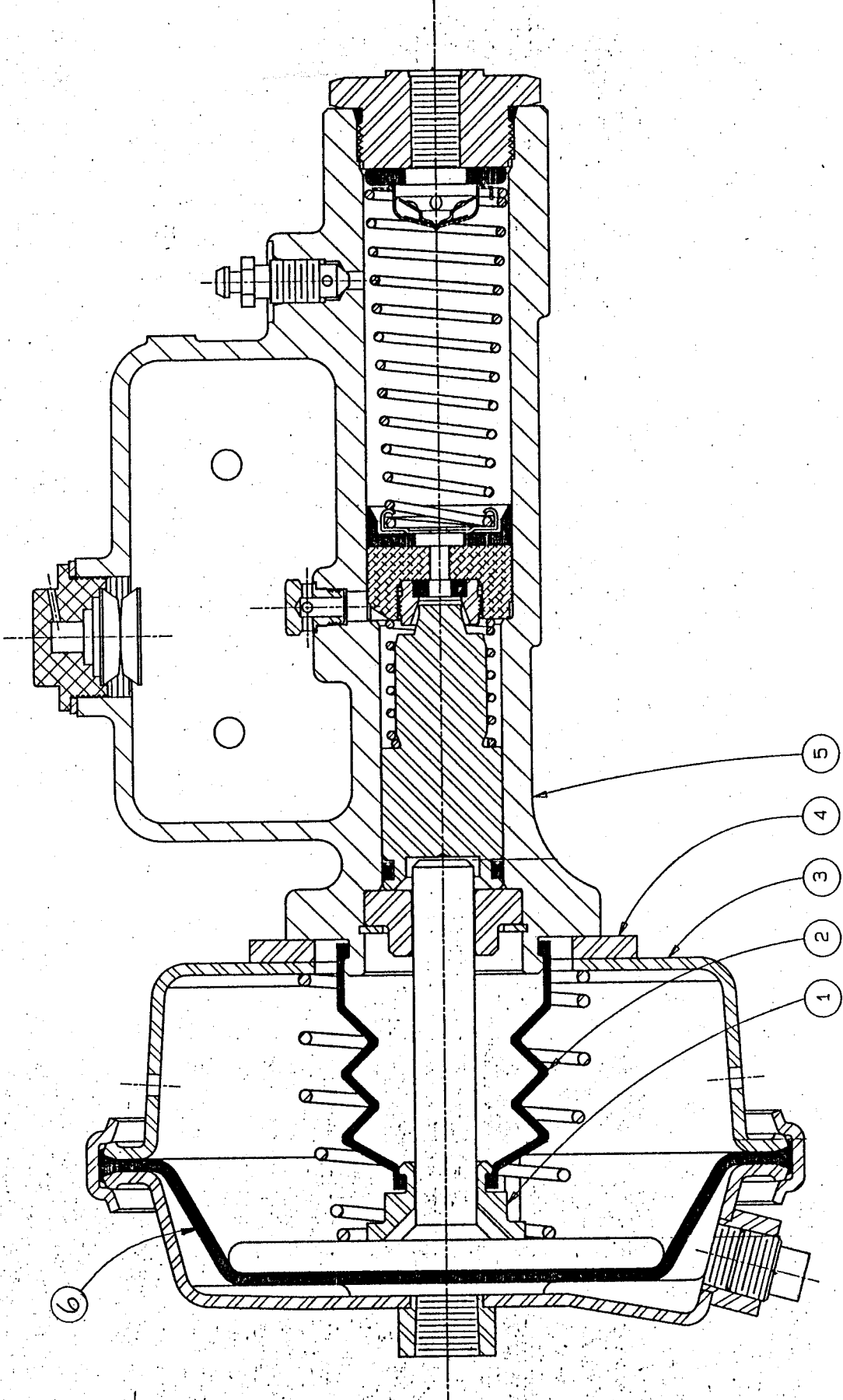
ASSEMBLY
NUMBER

DESCRIPTION

1805807

MASTER CYLINDER INSTALLATION

ITEM NO.	PART NUMBER	DESCRIPTION	QTY. USED
002	1802220	MASTER CYLINDER ASSEMBLY	2.00
003	1800454	H.H.C.S. 3/8-16 X 1 1/4" LONG	8.00
004	1800514	HEX NUT 3/8-16	8.00
005	1800552	3/8" FLAT WASHER	8.00
006	1800568	3/8" LOCK WASHER	8.00



SWINGMASTER CORPORATION

PARTS BOOK

MACHINE

SECTION

7

MODEL 361 SWINGLOADER

SERVICE BRAKE SYSTEM

ASSEMBLY
NUMBER

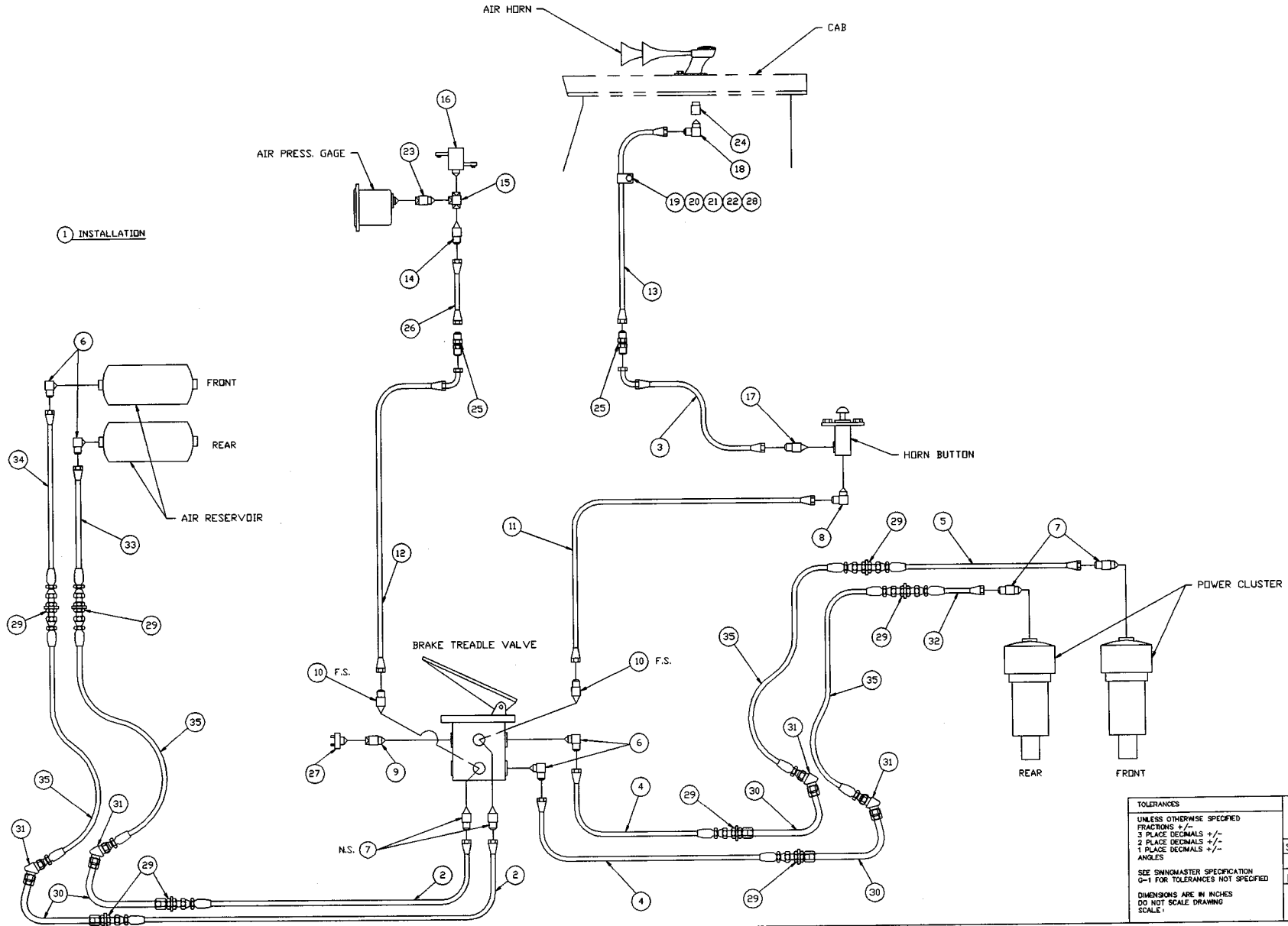
DESCRIPTION

1802220

MASTER CYLINDER ASSEMBLY

ITEM NO.	PART NUMBER	DESCRIPTION	QTY. USED
1	8702686	GUIDE	1
2	8702687	BOOT	1
3	8702688	AIR CHAMBER	1
4	8702689	MOUNTING BRACKET	1
5	8702730	CYLINDER	1
6	8702731	DIAPHRAGM	1
	8702732	REPAIR KIT	1

1 INSTALLATION



TOLERANCES
 UNLESS OTHERWISE SPECIFIED
 FRACTIONS +/-
 5 PLACE DECIMALS +/-
 2 PLACE DECIMALS +/-
 1 PLACE DECIMALS +/-
 ANGLES
 SEE SWINGMASTER SPECIFICATION
 Q-1 FOR TOLERANCES NOT SPECIFIED
 DIMENSIONS ARE IN INCHES
 DO NOT SCALE DRAWING
 SCALE

SWINGMASTER CORPORATION 11415 MELROSE AVENUE FRANKLIN PARK, ILL. 60131	
SERVICE BRAKE AIR LINES & FITTINGS	
MODEL SL180	DRAWING NO.
DRAWN BY: J.K. DATE: 7-27-98	D-795

MACHINE	SECTION	7
-----	-----	-----
MODEL SL180 SWINGLOADER	SERVICE BRAKE SYSTEM	
-----	-----	-----

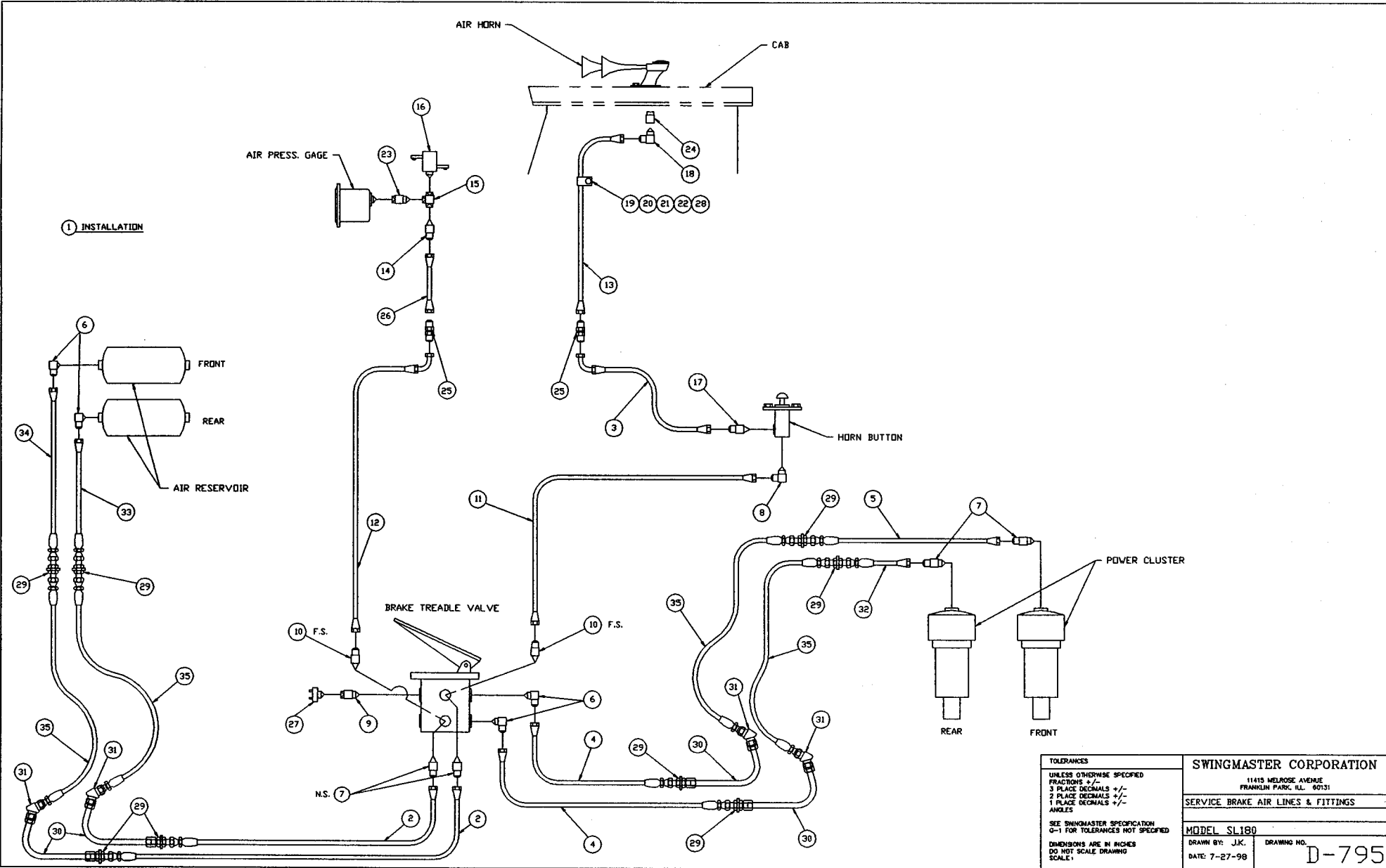
ASSEMBLY
NUMBER

DESCRIPTION

1805797

SERVICE BRAKE AIR LINES AND FITTINGS

ITEM NO.	PART NUMBER	DESCRIPTION	QTY. USED
002	1805802	HOSE ASSEMBLY 1503-8	2.00
003	1803822	HOSE ASSEMBLY 1503-4	1.00
004	1805798	HOSE ASSEMBLY 1503-8	2.00
005	1805799	HOSE ASSEMBLY 1503-8	1.00
006	1800782	90 DEG MALE ELBOW 3/8 PIPE TO 1/2 TUBE	4.00
007	1800755	STRAIGHT MALE 3/8 PIPE TO 1/2 TUBE	4.00
008	1800777	90 DEG MALE ELBOW 1/4 PIPE TO 1/4 TUBE	1.00
009	1800904	STRAIGHT PIPE REDUCER BUSHING 3/8 TO 1/4	1.00
010	1801868	STRAIGHT MALE 3/8 PIPE TO 1/4 TUBE	2.00
011	1801953	HOSE ASSEMBLY 1503-4	1.00
012	1803851	HOSE ASSEMBLY 1503-4	1.00
013	1803825	HOSE ASSEMBLY 1503-4	1.00
014	1800751	STRAIGHT MALE 1/4 PIPE TO 1/4 TUBE	1.00
015	1800915	1/4 PIPE FEMALE BRANCH TEE	1.00
016	1800142	LOW PRESSURE INDICATOR SWITCH	1.00
017	1800750	STRAIGHT MALE 1/8 PIPE TO 1/4 TUBE	1.00
018	1800775	90 DEG MALE ELBOW 1/8 PIPE TO 1/4 TUBE	1.00
019	1803215	HOSE CLAMP - 1 1/8"	1.00
020	1800550	5/16" FLAT WASHER	1.00
021	1800442	H.H.C.S. 5/16-18 X 3/4" LONG	1.00
022	1800512	HEX NUT 5/16-18	1.00
023	1800903	STRAIGHT PIPE REDUCER BUSHING 1/4 TO 1/8	1.00
024	1800292	AIR HORN ADAPTER 7/16 ST. - 1/8 PIPE	1.00
025	1801162	1/4 TUBE STRAIGHT BULKHEAD UNION	2.00
026	1803826	HOSE ASSEMBLY 1503-4	1.00
027	1800145	STOP SWITCH	1.00
028	1802495	PROTECTIVE SLEEVE - 3/4" I.D. /(FT)	5.00
029	1802632	1/2 TUBE STRAIGHT BULKHEAD UNION	8.00
030	1805805	TUBE ASSEMBLY	4.00
031	1805806	45 DEG MALE ELBOW - MALE FLARE BOTH ENDS	4.00
032	1805800	HOSE ASSEMBLY 1503-8	1.00



TOLERANCES
 UNLESS OTHERWISE SPECIFIED
 FRACTIONS +/-
 3 PLACE DECIMALS +/-
 2 PLACE DECIMALS +/-
 1 PLACE DECIMALS +/-
 ANGLES
 SEE SWINGMASTER SPECIFICATION
 G-1 FOR TOLERANCES NOT SPECIFIED
 DIMENSIONS ARE IN INCHES
 DO NOT SCALE DRAWING
 SCALE:

SWINGMASTER CORPORATION
 11415 MELROSE AVENUE
 FRANKLIN PARK, ILL. 00131

SERVICE BRAKE AIR LINES & FITTINGS

MODEL SL180

DRAWN BY: J.K. DATE: 7-27-98

DRAWING NO. D-795

MACHINE

SECTION

7

MODEL SL180 SWINGLOADER

SERVICE BRAKE SYSTEM

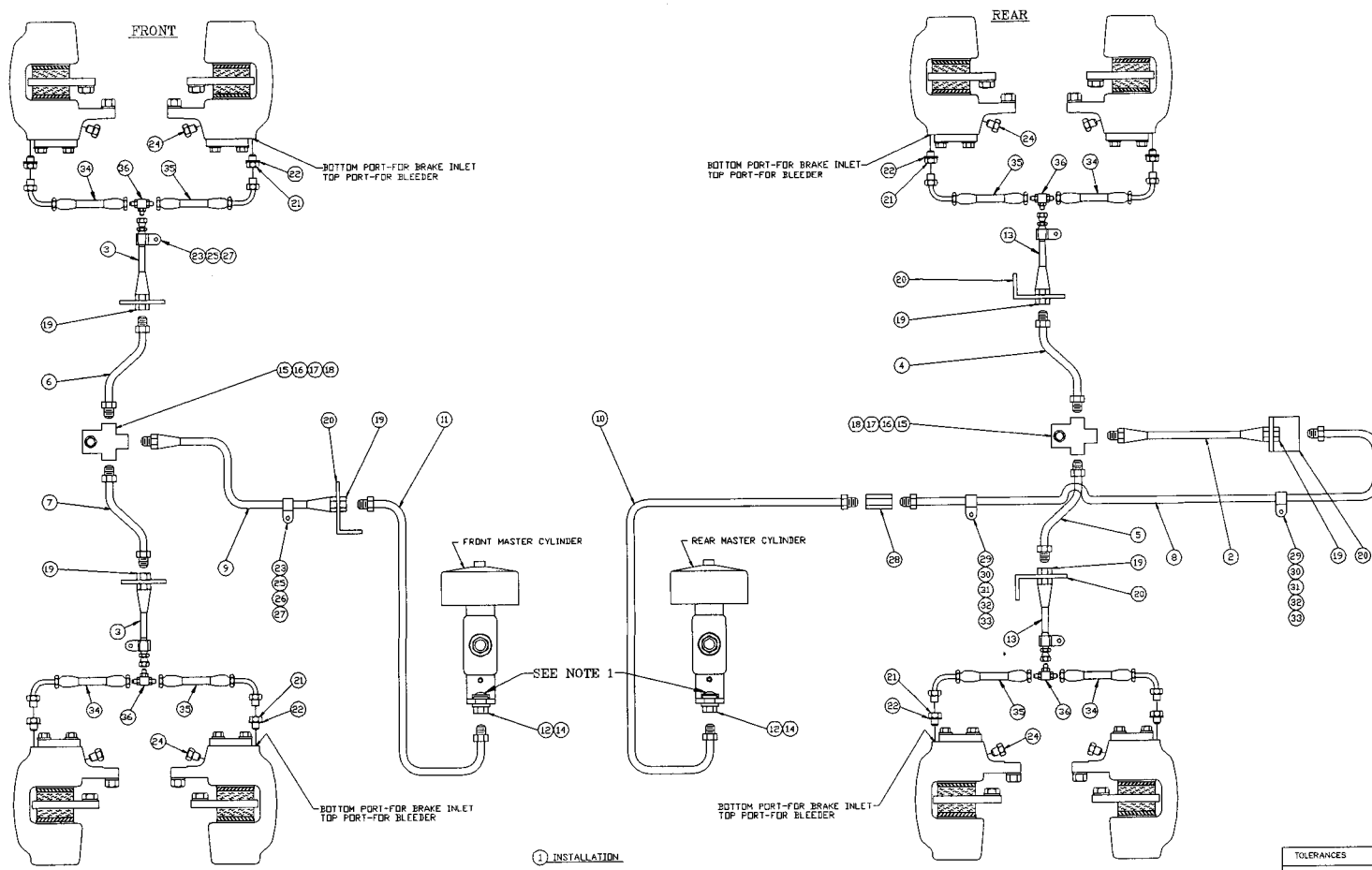
ASSEMBLY
NUMBER

DESCRIPTION

1805797

SERVICE BRAKE AIR LINES AND FITTINGS

ITEM NO.	PART NUMBER	DESCRIPTION	QTY. USED
033	1805803	HOSE ASSEMBLY 1503-8	1.00
034	1805804	HOSE ASSEMBLY 1503-8	1.00
035	1805801	HOSE ASSEMBLY 1503-8	4.00



NOTE : 1. WHEN USED FOR DISC BRAKE,
REMOVE RESIDUAL CHECK VALVE,
AND RUBBER WASHER.

TOLERANCES UNLESS OTHERWISE SPECIFIED FRACTIONS +/- 3 PLACE DECIMALS +/- 2 PLACE DECIMALS +/- 1 PLACE DECIMALS +/- ANGLES	SWINGMASTER CORPORATION 11418 MELROSE AVENUE FRANKLIN PARK, ILLINOIS 60131	
	SERVICE BRAKE, HYDRAULIC LINES & FITTINGS	
SEE SWINGMASTER SPECIFICATION G-1 FOR TOLERANCES NOT SPECIFIED	MODEL SL180	
DIMENSIONS ARE IN INCHES DO NOT SCALE DRAWING SCALE: NONE	DRAWN BY: J.K. DATE: 7-27-98	DRAWING NO. D-794

MACHINE

SECTION

7

MODEL SL180 SWINGLOADER

SERVICE BRAKE SYSTEM

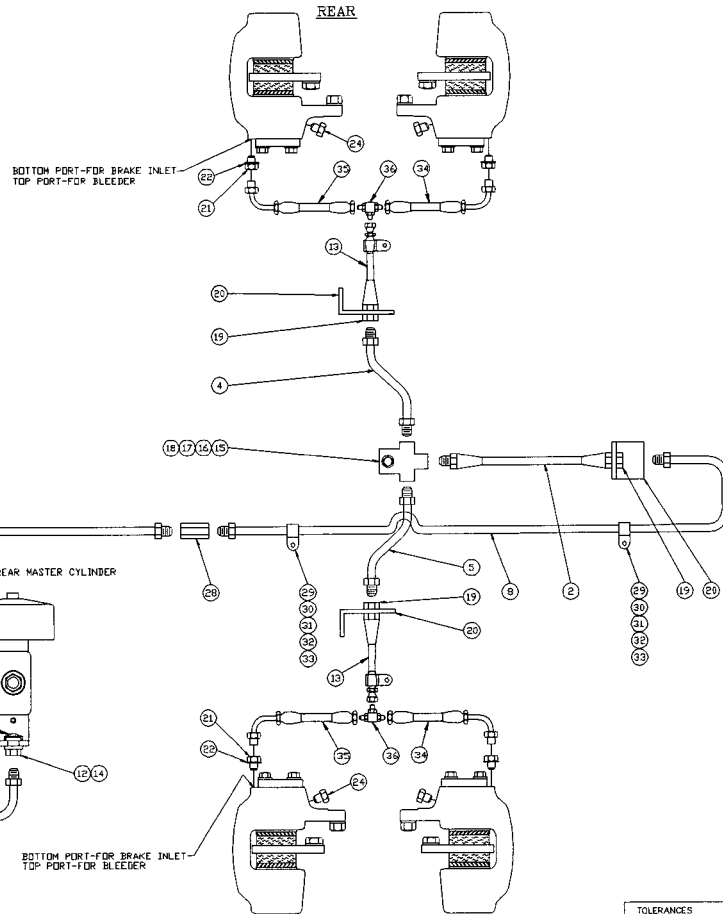
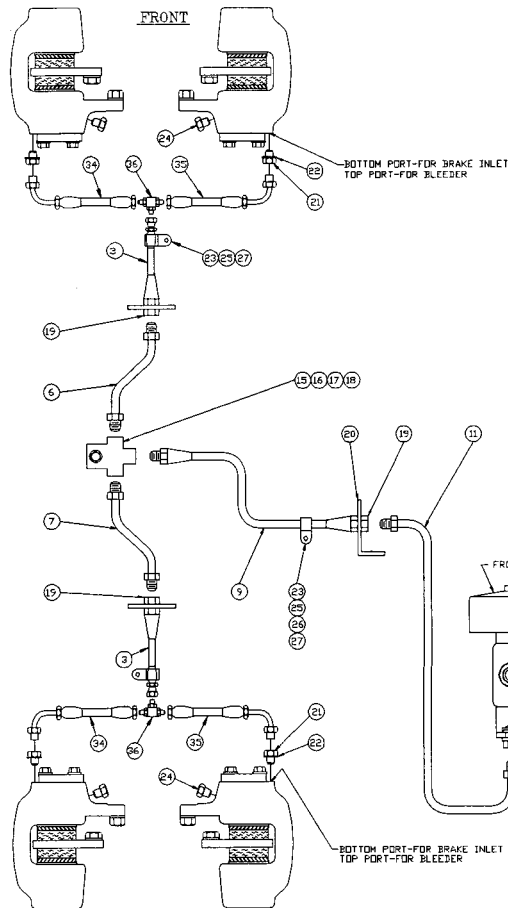
ASSEMBLY
NUMBER

DESCRIPTION

1805793

SERVICE BRAKE HYDRAULIC LINES & FITTINGS

ITEM NO.	PART NUMBER	DESCRIPTION	QTY. USED
002	1801219	HOSE ASSEMBLY 1503 - 4	1.00
003	1806283	HOSE ASSEMBLY	2.00
004	1801221	TUBE ASSEMBLY	1.00
005	1801222	TUBE ASSEMBLY	1.00
006	1801223	TUBE ASSEMBLY	1.00
007	1801224	TUBE ASSEMBLY	1.00
008	1805794	TUBE ASSEMBLY 1/4" O.D. STEEL TUBING	1.00
009	1802224	HOSE ASSEMBLY 1503-4	1.00
010	1805795	TUBE ASSEMBLY 1/4" O.D. STEEL TUBING	1.00
011	1805796	TUBE ASSEMBLY 1/4" O.D. STEEL TUBING	1.00
012	1800924	MASTER CYL CON 1/2-20 M TO 7/16-24 F	2.00
013	1806284	HOSE ASSEMBLY	2.00
014	1800922	COPPER GASKET 1/2 DIAMETER	2.00
015	1800927	7/16-20(HOSE) TO TWO 7/16-24 F	2.00
016	1800445	H.H.C.S. 5/16-18 X 1 1/2" LONG	2.00
017	1800512	HEX NUT 5/16-18	2.00
018	1800074	5/16" LOCK WASHER	2.00
019	1800532	HEX JAM NUT 5/8-18	6.00
020	1800169	ANGLE	4.00
021	1805583	INLET CONNECTOR	4.00
022	1804582	7/16" COPPER WASHER	4.00
023	1800739	1/2" DIAMETER CLAMP	5.00
024	1805584	INVERTED FLARE PLUG 1/2-20	4.00
025	1800452	H.H.C.S. 3/8-16 X 1" LONG	5.00
026	1800514	HEX NUT 3/8-16	1.00
027	1800568	3/8" LOCK WASHER	5.00
028	1801092	1/4" TUBE UNION	1.00
029	1800747	1/4" DIAMETER CLAMP	2.00
030	1800430	H.H.C.S. 1/4-20 X 1/2" LONG	2.00
031	1800510	HEX NUT 1/4-20	2.00
032	1800548	1/4" FLAT WASHER	2.00



① INSTALLATION.

NOTE : 1. WHEN USED FOR DISC BRAKE,
REMOVE RESIDUAL CHECK VALVE,
AND RUBBER WASHER.

TOLERANCES	SWINGMASTER CORPORATION	
UNLESS OTHERWISE SPECIFIED	11415 MELROSE AVENUE	
FRACTIONS +/-	FRANKLIN PARK, ILLINOIS 90131	
3 PLACE DECIMALS +/-	SERVICE BRAKE HYDRAULIC LINES & FITTINGS	
2 PLACE DECIMALS +/-		
1 PLACE DECIMALS +/-		
ANGLES		
SEE SWINGMASTER SPECIFICATION	MODEL SL180	
G-1 FOR TOLERANCES NOT SPECIFIED	DRAWN BY: J.K.	DRAWING NO.
DIMENSIONS ARE IN INCHES	DATE: 7-27-98	D-794
DO NOT SCALE DRAWING	SCALE: NONE	

MACHINE

SECTION

7

MODEL SL180 SWINGLOADER

SERVICE BRAKE SYSTEM

ASSEMBLY
NUMBER

DESCRIPTION

1805793

SERVICE BRAKE HYDRAULIC LINES & FITTINGS

ITEM NO.	PART NUMBER	DESCRIPTION	QTY. USED
033	1800567	1/4" LOCK WASHER	2.00
034	1806285	HOSE ASSEMBLY	4.00
035	1806286	HOSE ASSEMBLY	4.00
036	1804344	MALE TUBE TEE - 1/4	4.00