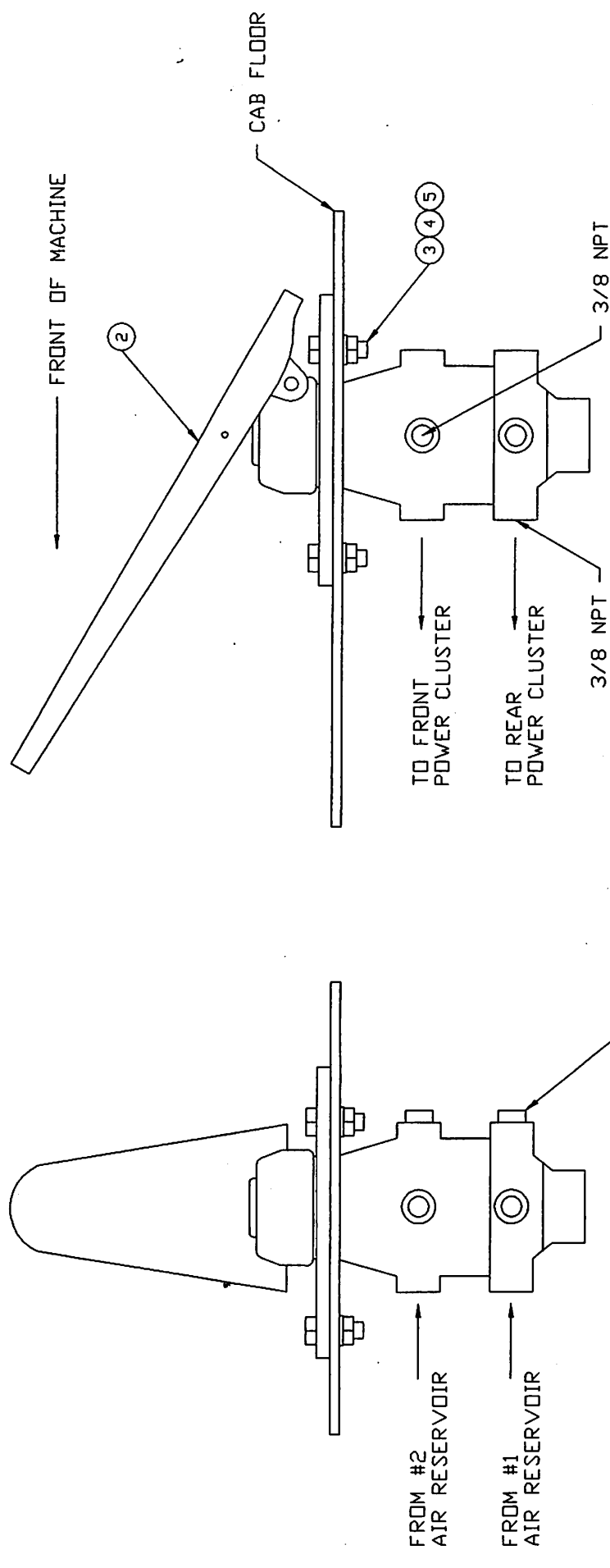




SECTION G

SERVICE
BRAKE
SYSTEM



TOLERANCES .
 UNLESS OTHERWISE SPECIFIED
 FRACTIONS +/-
 3 PLACE DECIMALS +/-
 2 PLACE DECIMALS +/-
 1 PLACE DECIMALS +/-
 ANGLES
 SEE SWINGMASTER SPECIFICATION
 G-1 FOR TOLERANCES NOT SPECIFIED
 DIMENSIONS ARE IN INCHES
 DO NOT SCALE DRAWING
 SCALE: NONE

1 INSTALLATION

SWINGMASTER CORPORATION	
11415 MELROSE AVENUE FRANKLIN PARK, ILLINOIS 80131	
BRAKE TREADLE VALVE INSTALLATION	
DRAWN BY: J.K.	DRAWING NO.
DATE: 11-18-88	H-45

MACHINE

SECTION

1

MODEL SL180-13 SWINGLOADER

SERVICE BRAKE SYSTEM

ASSEMBLY
NUMBER

DESCRIPTION

1801209

BRAKE TREADLE VALVE INSTALLATION

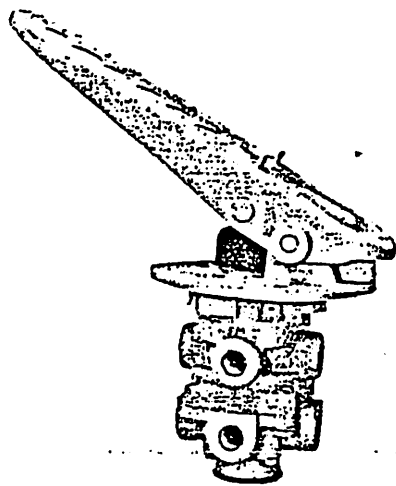
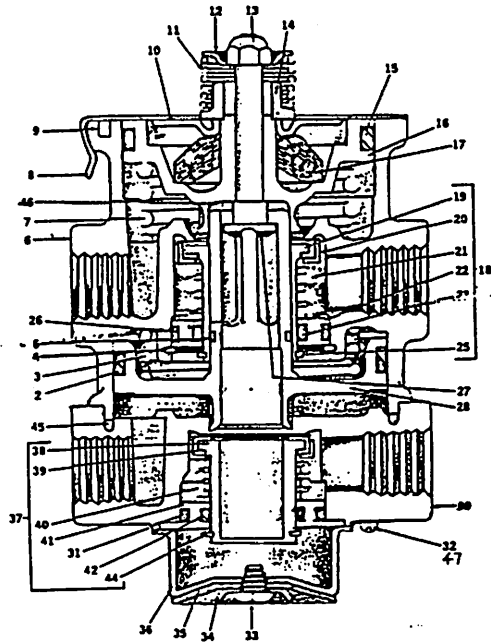
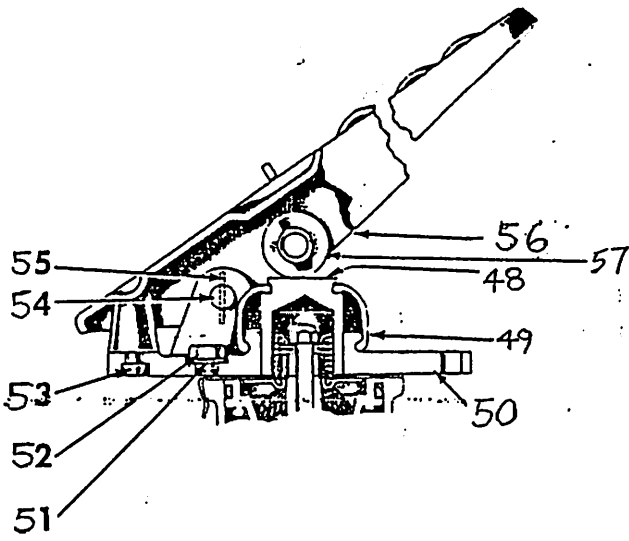
ITEM NO.	PART NUMBER	DESCRIPTION	QTY. USED
002	1800135	BRAKE VALVE	1.00
003	1800443	H.H.C.S. 5/16-18 X 1" LONG	3.00
004	1800512	HEX NUT 5/16-18	3.00
005	1800074	5/16" LOCK WASHER	3.00
006	1800655	3/8" PIPE PLUG-SOCKET HEAD	4.00

SWINGMASTER CORPORATION

11415 MELROSE AVENUE

FRANKLIN PARK, ILLINOIS 60131

TEL: (847) 451-1224



① ASSEMBLY

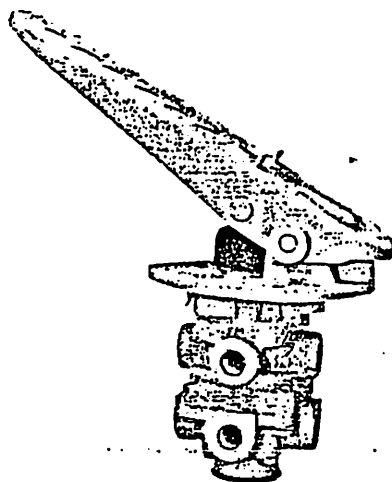
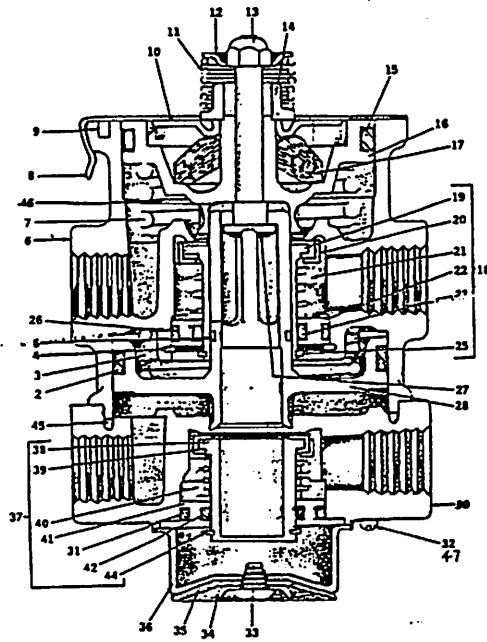
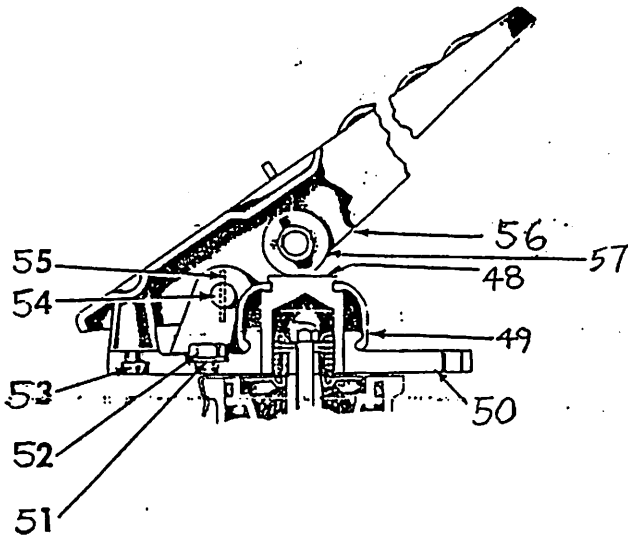
MACHINE	SECTION	1
MODEL SL180-13 SWINGLOADER	SERVICE BRAKE SYSTEM	

ASSEMBLY NUMBER	DESCRIPTION
1800135	BRAKE VALVE ASSEMBLY

ITEM NO.	PART NUMBER	DESCRIPTION	QTY. USED
2		O-RING	1
3		RELAY PISTON SPRING	1
4		RETAINING RING	1
5		O-RING	1
6		BODY- NOT SERVICEABLE	1
7		PISTON RETURN SPRING	1
8		RETAINER	1
9		VENT FILTER	1
10		SPRING SEAT	1
11		STEM SPRING	1
12		SPRING GUIDE	1
13		NUT	1
14		SPRING SEAT NUT	1
15		O-RING	1
16		PRIMARY PISTON	1
17		RUBBER SPRING	1
18		INLET & EXHAUST VALVE ASSEMBLY	1
19		INLET & EXHAUST VLAVE	1
20		VALVE RETAINER	1
21		SPRING	1
22		O-RING RETAINER	1
23		O-RING	1
25		RETAINING RING	1
26		O-RING	1
27		STEM	1
28		RELAY PISTON	1
30		BODY- NOT SERVICEABLE	1
31		O-RING	1
32	8700632	MACHINE SCREW	4
33		SCREW	1

SWINGMASTER CORPORATION
 11415 MELROSE AVENUE
 FRANKLIN PARK, ILLINOIS 60131

TEL: (847) 451-1224



① ASSEMBLY

MACHINE SECTION 1

MODEL SL180-13 SWINGLOADER SERVICE BRAKE SYSTEM

ASSEMBLY NUMBER		DESCRIPTION	
-----		-----	
1800135		BRAKE VALVE ASSEMBLY	
-----		-----	
ITEM NO.	PART NUMBER	DESCRIPTION	QTY. USED

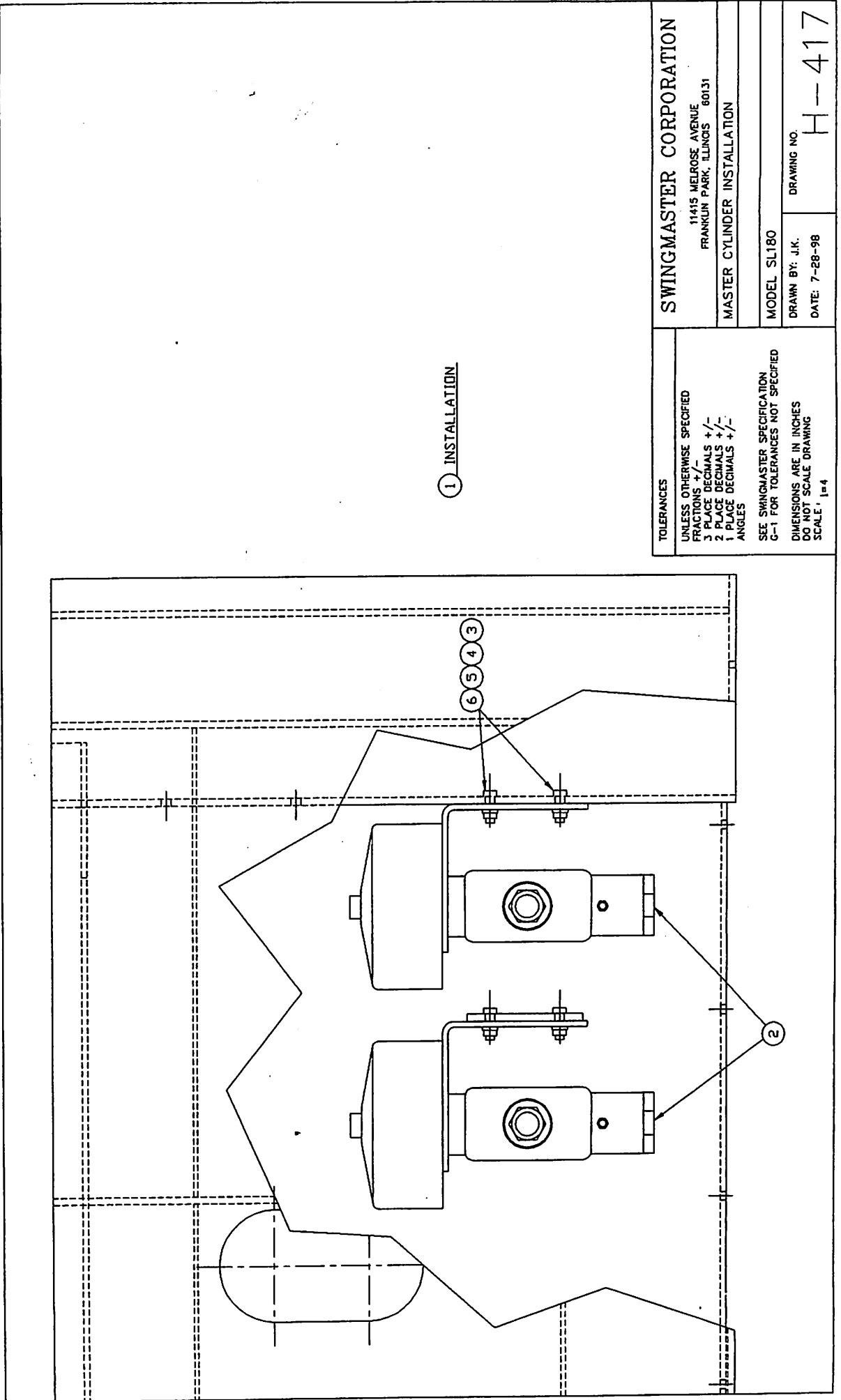
34		DIAPHRAGM WASHER	1
35		DIAPHRAGM	1
36		EXHAUST COVER	1
37		INLET & EXHAUST VALVE ASSEMBLY	1
38		INLET & EXHAUST VALVE	1
39		VALVE RETAINER	1
40		SPRING	1
41		O-RING RETAINER	1
42		O-RING	1
44		RETAINING RING	1
45		O-RING	1
46		RUBBER WASHER	1
47		LOCKWASHER	4
	8700633	MINOR MAINTENANCE KIT	1
		INCLUDES ITEMS 2,3,5,7,9,11,13,15,17	
		18-23,25,26,31,33-35,37-42,44-46	
	8700634	MAJOR MAINTENANCE KIT	1
		INLCUDES ITEMS 4,8,10,12,14,16,27,28,36	
48	8700635	PLUNGER	1
49	8700636	BOOT	1
50	8700637	MOUNTING PLATE	1
51	8700638	LOCKWASHER	3
52	8700639	CAP SCREW	3
53	8700640	STOP BUTTON	1
54	8700641	FULCRUM PIN	1
55	8700642	COTTER PIN	1
56	8700643	TREADLE	1
57	8700644	ROLLER	1
	8700645	STEEL TREADLE ASSEMBLY - INCLUDES 56,57	1

SWINGMASTER CORPORATION

11415 MELROSE AVENUE

FRANKLIN PARK, ILLINOIS 60131

TEL: (847) 451-1224



① INSTALLATION

TOLERANCES

UNLESS OTHERWISE SPECIFIED
 FRACTIONS +/-
 3 PLACE DECIMALS +/-
 2 PLACE DECIMALS +/-
 1 PLACE DECIMALS +/-
 ANGLES

SEE SWINGMASTER SPECIFICATION
 G-1 FOR TOLERANCES NOT SPECIFIED
 DIMENSIONS ARE IN INCHES
 DO NOT SCALE DRAWING
 SCALE: 1/4"

SWINGMASTER CORPORATION

11415 MELROSE AVENUE
 FRANKLIN PARK, ILLINOIS 60131

MASTER CYLINDER INSTALLATION

MODEL SL180

DRAWN BY: J.K.

DATE: 7-28-98

DRAWING NO.

H-417

MACHINE SECTION 1

MODEL SL180-13 SWINGLOADER SERVICE BRAKE SYSTEM

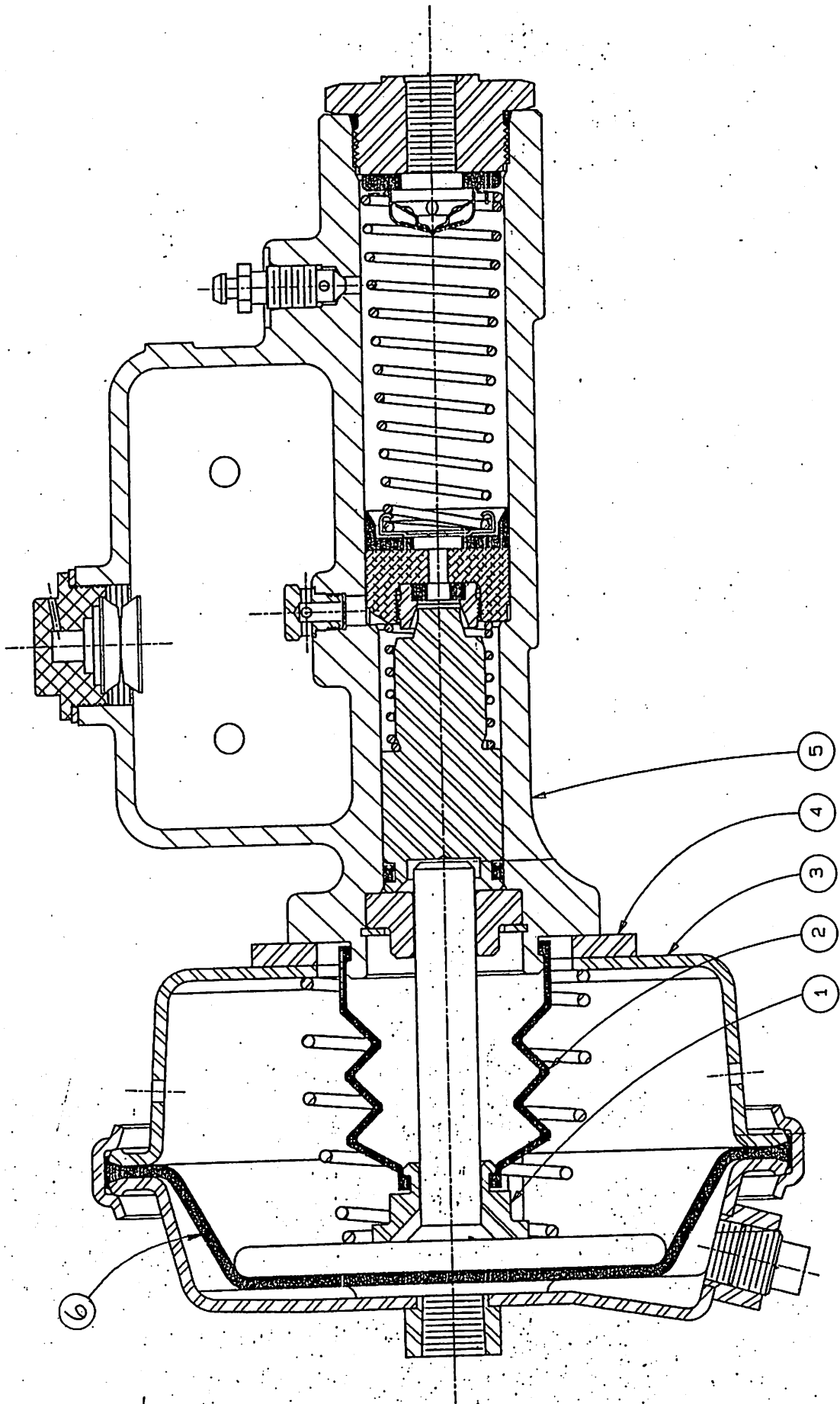
ASSEMBLY NUMBER	DESCRIPTION
----- 1805807 -----	----- MASTER CYLINDER INSTALLATION -----

ITEM NO.	PART NUMBER	DESCRIPTION	QTY. USED

002	1802220	MASTER CYLINDER ASSEMBLY	2.00
003	1800454	H.H.C.S. 3/8-16 X 1 1/4" LONG	8.00
004	1800514	HEX NUT 3/8-16	8.00
005	1800552	3/8" FLAT WASHER	8.00
006	1800568	3/8" LOCK WASHER	8.00

SWINGMASTER CORPORATION
 11415 MELROSE AVENUE
 FRANKLIN PARK, ILLINOIS 60131

TEL: (847) 451-1224



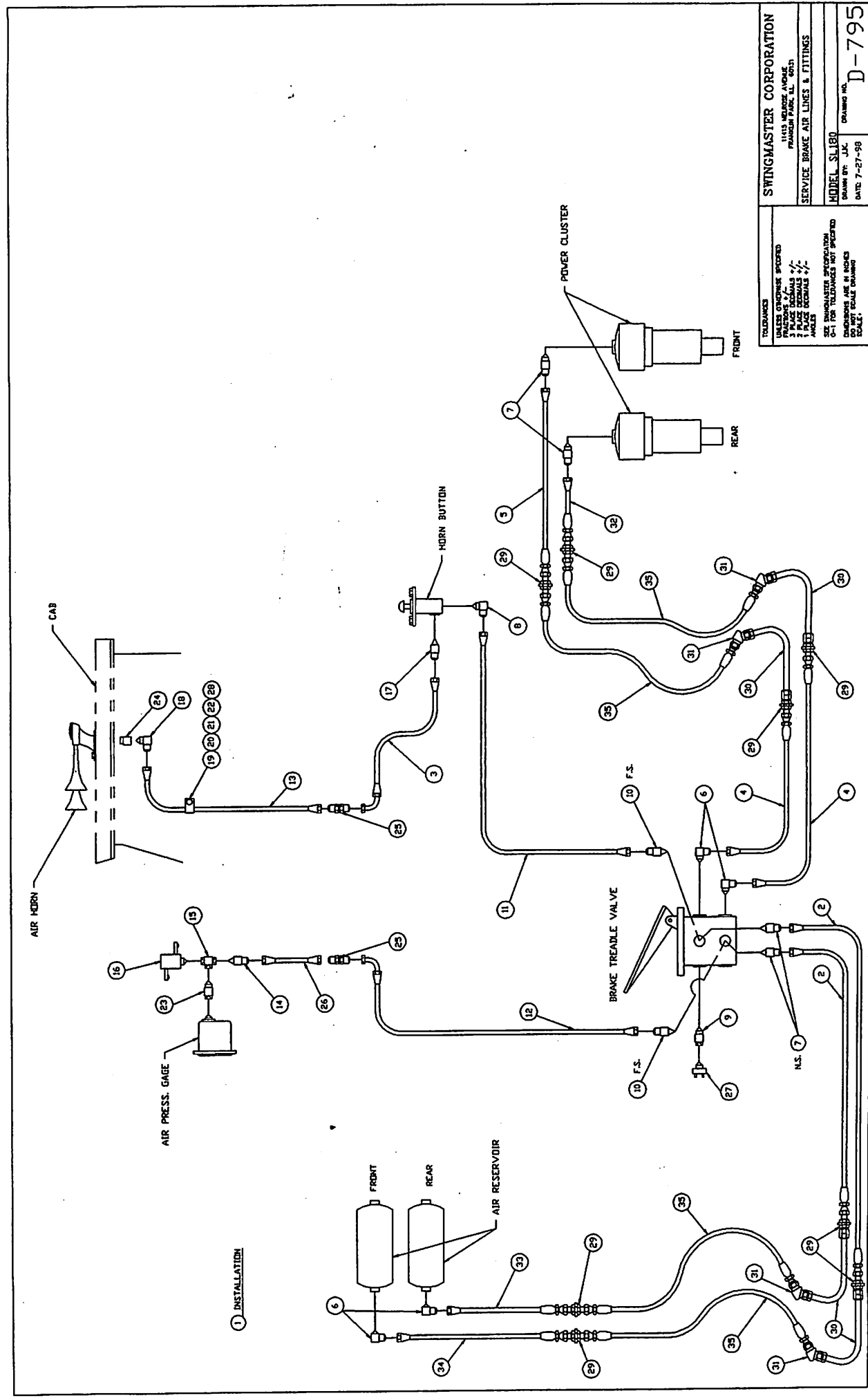
MACHINE	SECTION	1
MODEL SL180-13 SWINGLOADER	SERVICE BRAKE SYSTEM	

ASSEMBLY NUMBER	DESCRIPTION
-----	-----
1802220	MASTER CYLINDER ASSEMBLY
-----	-----

ITEM NO.	PART NUMBER	DESCRIPTION	QTY. USED
<hr/>			
1	8702686	GUIDE	1
2	8702687	BOOT	1
3	8702688	AIR CHAMBER	1
4	8702689	MOUNTING BRACKET	1
5	8702730	CYLINDER	1
6	8702731	DIAPHRAGM	1
	8702732	REPAIR KIT	1
<hr/>			

SWINGMASTER CORPORATION
 11415 MELROSE AVENUE
 FRANKLIN PARK, ILLINOIS 60131

TEL: (847) 451-1224



1 INSTALLATION

TOLERANCES
 UNLESS OTHERWISE SPECIFIED
 FINISHES
 1 PLACE ORIGINALS
 2 PLACE ORIGINALS
 3 PLACE ORIGINALS
 4 PLACE ORIGINALS
 5 PLACE ORIGINALS
 6 PLACE ORIGINALS
 7 PLACE ORIGINALS
 8 PLACE ORIGINALS
 9 PLACE ORIGINALS
 10 PLACE ORIGINALS
 11 PLACE ORIGINALS
 12 PLACE ORIGINALS
 13 PLACE ORIGINALS
 14 PLACE ORIGINALS
 15 PLACE ORIGINALS
 16 PLACE ORIGINALS
 17 PLACE ORIGINALS
 18 PLACE ORIGINALS
 19 PLACE ORIGINALS
 20 PLACE ORIGINALS
 21 PLACE ORIGINALS
 22 PLACE ORIGINALS
 23 PLACE ORIGINALS
 24 PLACE ORIGINALS
 25 PLACE ORIGINALS
 26 PLACE ORIGINALS
 27 PLACE ORIGINALS
 28 PLACE ORIGINALS
 29 PLACE ORIGINALS
 30 PLACE ORIGINALS
 31 PLACE ORIGINALS
 32 PLACE ORIGINALS
 33 PLACE ORIGINALS
 34 PLACE ORIGINALS
 35 PLACE ORIGINALS

SWINGMASTER CORPORATION
 11115 WEDGE AVENUE
 PRICHARD, MISSISSIPPI 39154
 SERVICE BRAKE AIR LINES & FITTINGS
 MODEL SL180
 DRAWN BY: J.K.
 DATE: 7-27-98
 CHECKED BY: J.K.
 DATE: 7-27-98
 DO NOT SCALE DRAWING

MACHINE

SECTION

1

MODEL SL180-13 SWINGLOADER

SERVICE BRAKE SYSTEM

ASSEMBLY
NUMBER

DESCRIPTION

1805797

SERVICE BRAKE AIR LINES AND FITTINGS

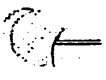
ITEM NO.	PART NUMBER	DESCRIPTION	QTY. USED
002	1805802	HOSE ASSEMBLY 1503-8	2.00
003	1803822	HOSE ASSEMBLY 1503-4	1.00
004	1805798	HOSE ASSEMBLY 1503-8	2.00
005	1805799	HOSE ASSEMBLY 1503-8	1.00
006	1800782	90 DEG MALE ELBOW 3/8 PIPE TO 1/2 TUBE	4.00
007	1800755	STRAIGHT MALE 3/8 PIPE TO 1/2 TUBE	4.00
008	1800777	90 DEG MALE ELBOW 1/4 PIPE TO 1/4 TUBE	1.00
009	1800904	STRAIGHT PIPE REDUCER BUSHING 3/8 TO 1/4	1.00
010	1801868	STRAIGHT MALE 3/8 PIPE TO 1/4 TUBE	2.00
011	1801953	HOSE ASSEMBLY 1503-4	1.00
012	1803851	HOSE ASSEMBLY 1503-4	1.00
013	1803825	HOSE ASSEMBLY 1503-4	1.00
014	1800751	STRAIGHT MALE 1/4 PIPE TO 1/4 TUBE	1.00
015	1800915	1/4 PIPE FEMALE BRANCH TEE	1.00
016	1800142	LOW PRESSURE INDICATOR SWITCH	1.00
017	1800750	STRAIGHT MALE 1/8 PIPE TO 1/4 TUBE	1.00
018	1800775	90 DEG MALE ELBOW 1/8 PIPE TO 1/4 TUBE	1.00
019	1803215	HOSE CLAMP - 1 1/8"	1.00
020	1800550	5/16" FLAT WASHER	1.00
021	1800442	H.H.C.S. 5/16-18 X 3/4" LONG	1.00
022	1800512	HEX NUT 5/16-18	1.00
023	1800903	STRAIGHT PIPE REDUCER BUSHING 1/4 TO 1/8	1.00
024	1800292	AIR HORN ADAPTER 7/16 ST. - 1/8 PIPE	1.00
025	1801162	1/4 TUBE STRAIGHT BULKHEAD UNION	2.00
026	1803826	HOSE ASSEMBLY 1503-4	1.00
027	1800145	STOP SWITCH	1.00
028	1802495	PROTECTIVE SLEEVE - 3/4" I.D. / (FT)	5.00
029	1802632	1/2 TUBE STRAIGHT BULKHEAD UNION	8.00
030	1805805	TUBE ASSEMBLY	4.00
031	1805806	45 DEG MALE ELBOW - MALE FLARE BOTH ENDS	4.00
032	1805800	HOSE ASSEMBLY 1503-8	1.00

SWINGMASTER CORPORATION

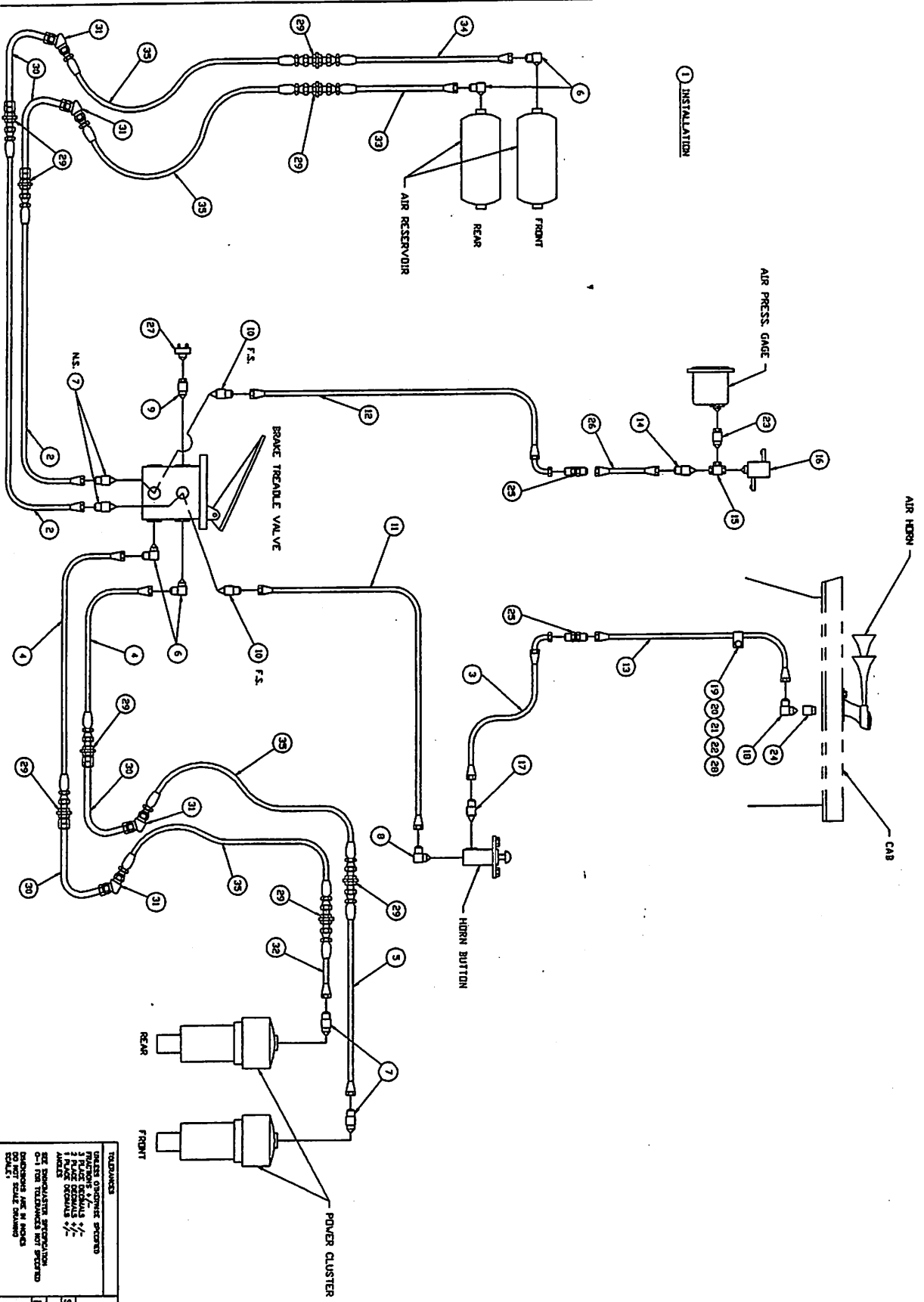
11415 MELROSE AVENUE

FRANKLIN PARK, ILLINOIS 60131

TEL: (847) 451-1224



1 INSTALLATION



UNLESS OTHERWISE SPECIFIED
 ALL DIMENSIONS ARE IN INCHES
 FRACTIONS SHOULD BE 1/8"
 DECIMALS SHOULD BE TO NEAREST 0.001
 SEE DIMENSIONAL SPECIFICATION
 C-1 FOR DIMENSIONS NOT SPECIFIED
 DIMENSIONS ARE IN INCHES
 UNLESS OTHERWISE SPECIFIED

SWINGMASTER CORPORATION
 1111 W. BRIDGE AVENUE
 RICHMOND, MISS. 39201

SERVICE BRAKE AIR LINES & FITTINGS

MODEL SL180
 DRAWN BY: J.K.
 DATE: 7-27-98

DRAWING NO. D-795

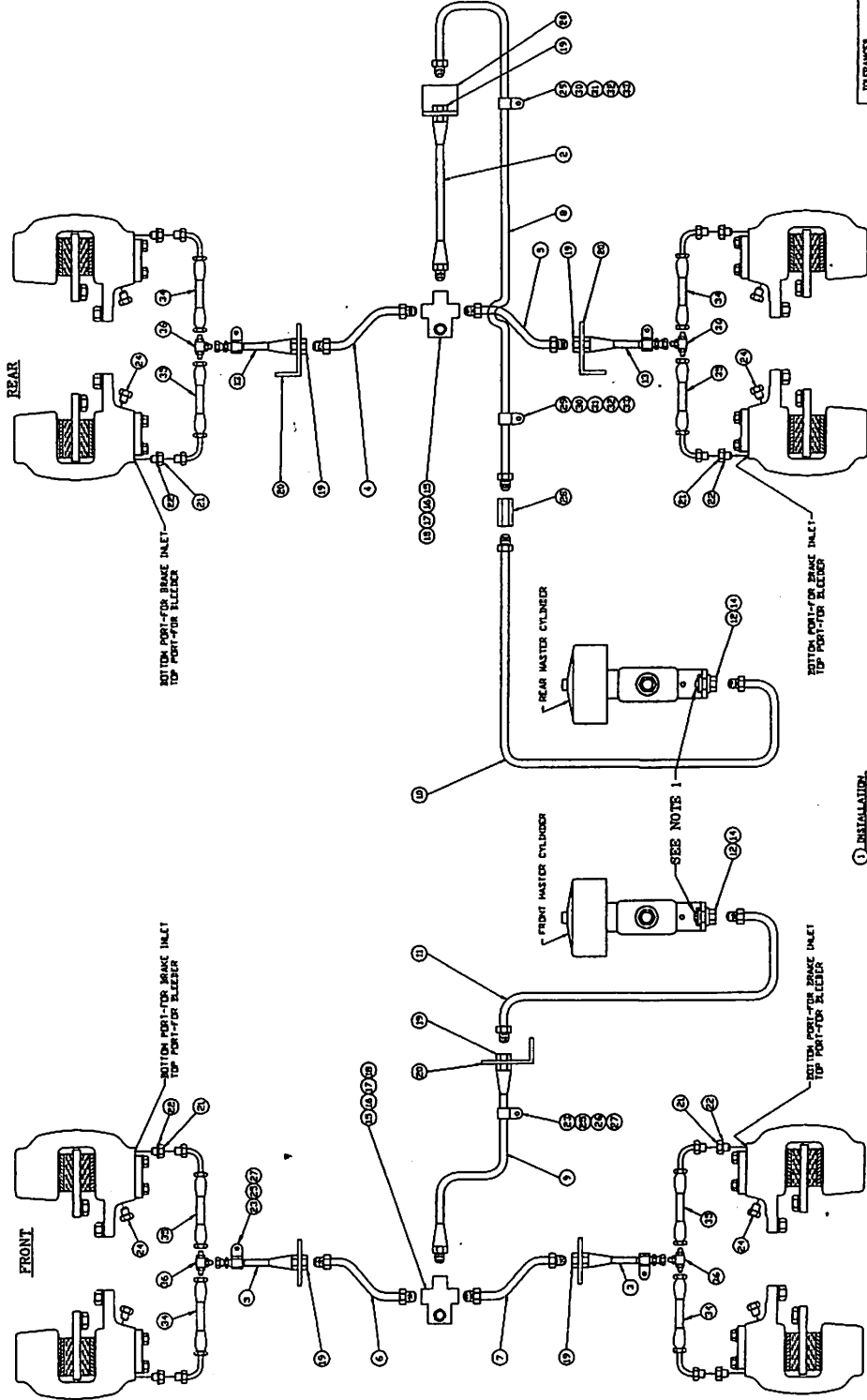
MACHINE	SECTION	1
MODEL SL180-13 SWINGLOADER	SERVICE BRAKE SYSTEM	

ASSEMBLY NUMBER	DESCRIPTION
1805797	SERVICE BRAKE AIR LINES AND FITTINGS

ITEM NO.	PART NUMBER	DESCRIPTION	QTY. USED
033	1805803	HOSE ASSEMBLY 1503-8	1.00
034	1805804	HOSE ASSEMBLY 1503-8	1.00
035	1805801	HOSE ASSEMBLY 1503-8	4.00

SWINGMASTER CORPORATION
 11415 MELROSE AVENUE
 FRANKLIN PARK, ILLINOIS 60131

TEL: (847) 451-1224



NOTE : 1. WHEN USED FOR DISC BRAKE
REMOVE RESIDUAL CHECK VALVE
AND RUBBER WASHER

TOLERANCES UNLESS OTHERWISE SPECIFIED ALL DIMENSIONS IN INCHES 3 PLACE DECIMALS +/- 2 PLACE DECIMALS +/- 1 PLACE DECIMALS +/- ANGLES		SWINGMASTER CORPORATION 11413 WILSON AVENUE PRINCETON PARK, ELWOOD, OHIO
SEE SWINGMASTER SPECIFICATION G-1 FOR TOLERANCES NOT SHOWN DIMENSIONS ARE IN INCHES UNLESS OTHERWISE SPECIFIED ALL DIMENSIONS NOT SHOWN TO BE IN INCHES UNLESS OTHERWISE SPECIFIED		MODEL S1180 DRAWN BY J.A.L. DATE 7-27-78
SERVICE BRAKE HYDRAULIC LINES & FITTINGS		D-794

① INSTALLATION

MACHINE _____ SECTION 1

 MODEL SL180-13 SWINGLOADER SERVICE BRAKE SYSTEM

ASSEMBLY
 NUMBER 1805793

 DESCRIPTION SERVICE BRAKE HYDRAULIC LINES & FITTINGS

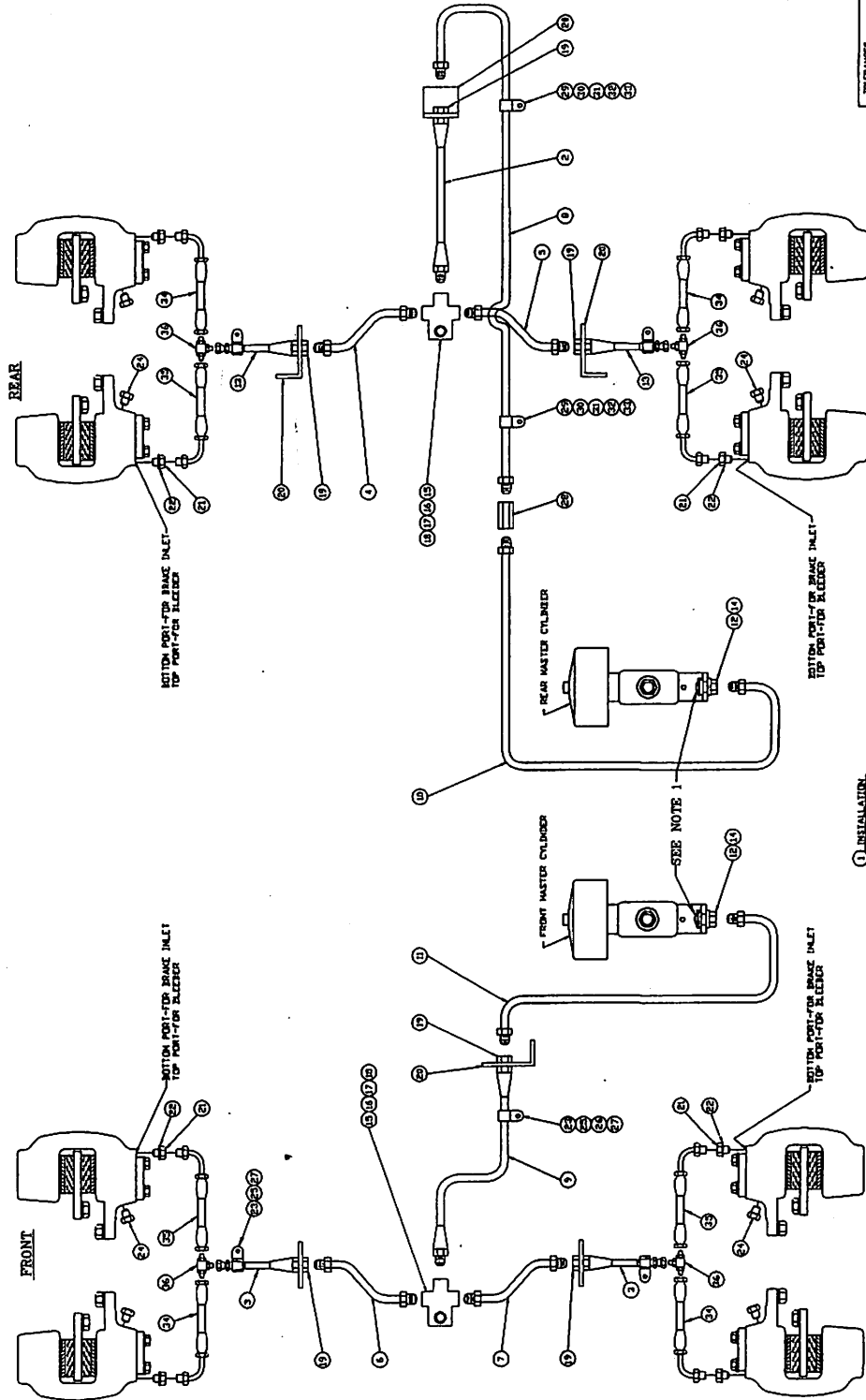
ITEM NO.	PART NUMBER	DESCRIPTION	QTY. USED
002	1801219	HOSE ASSEMBLY 1503 - 4	1.00
003	1806283	HOSE ASSEMBLY	2.00
004	1801221	TUBE ASSEMBLY	1.00
005	1801222	TUBE ASSEMBLY	1.00
006	1801223	TUBE ASSEMBLY	1.00
007	1801224	TUBE ASSEMBLY	1.00
008	1805794	TUBE ASSEMBLY 1/4" O.D. STEEL TUBING	1.00
009	1802224	HOSE ASSEMBLY 1503-4	1.00
010	1805795	TUBE ASSEMBLY 1/4" O.D. STEEL TUBING	1.00
011	1805796	TUBE ASSEMBLY 1/4" O.D. STEEL TUBING	1.00
012	1800924	MASTER CYL CON 1/2-20 M TO 7/16-24 F	2.00
013	1806284	HOSE ASSEMBLY	2.00
014	1800922	COPPER GASKET 1/2 DIAMETER	2.00
015	1800927	7/16-20 (HOSE) TO TWO 7/16-24 F	2.00
016	1800445	H.H.C.S. 5/16-18 X 1 1/2" LONG	2.00
017	1800512	HEX NUT 5/16-18	2.00
018	1800074	5/16" LOCK WASHER	2.00
019	1800532	HEX JAM NUT 5/8-18	6.00
020	1800169	ANGLE	4.00
021	1805583	INLET CONNECTOR	4.00
022	1804582	7/16" COPPER WASHER	4.00
023	1800739	1/2" DIAMETER CLAMP	5.00
024	1805584	INVERTED FLARE PLUG 1/2-20	4.00
025	1800452	H.H.C.S. 3/8-16 X 1" LONG	5.00
026	1800514	HEX NUT 3/8-16	1.00
027	1800568	3/8" LOCK WASHER	5.00
028	1801092	1/4" TUBE UNION	1.00
029	1800747	1/4" DIAMETER CLAMP	2.00
030	1800430	H.H.C.S. 1/4-20 X 1/2" LONG	2.00
031	1800510	HEX NUT 1/4-20	2.00
032	1800548	1/4" FLAT WASHER	2.00

SWINGMASTER CORPORATION

11415 MELROSE AVENUE

FRANKLIN PARK, ILLINOIS 60131

TEL: (847) 451-1224



NOTE : 1. WHEN USED FOR DISC BRAKE,
REMOVE RESIDUAL CHECK VALVE,
AND RUBBER WASHER.

TOLERANCES
UNLESS OTHERWISE SPECIFIED
HOLE DIMENSIONS ±.0005
3 PLACE DECIMALS +/-
FIT DIMENSIONS ±.0005
ANGLES
SEE SWINGMASTER SPECIFICATION
DIMENSIONS ARE IN INCHES
DO NOT SCALE DRAWING
SCALE: NONE

SWINGMASTER CORPORATION
11111 W. 10TH AVE. SUITE 100
FRANKLIN PARK, ILLINOIS 60151
SERVICE BRAKE HYDRAULIC LINES & FITTINGS
MODEL SL160
DRAWN BY: J.K.
DATE: 7-27-90
DRAWING NO. D-794

MACHINE

SECTION

1

MODEL SL180-13 SWINGLOADER

SERVICE BRAKE SYSTEM

ASSEMBLY
NUMBER

DESCRIPTION

1805793

SERVICE BRAKE HYDRAULIC LINES & FITTINGS

ITEM NO.	PART NUMBER	DESCRIPTION	QTY. USED
033	1800567	1/4" LOCK WASHER	2.00
034	1806285	HOSE ASSEMBLY	4.00
035	1806286	HOSE ASSEMBLY	4.00
036	1804344	MALE TUBE TEE - 1/4	4.00

SWINGMASTER CORPORATION

11415 MELROSE AVENUE

FRANKLIN PARK, ILLINOIS 60131

TEL: (847) 451-1224