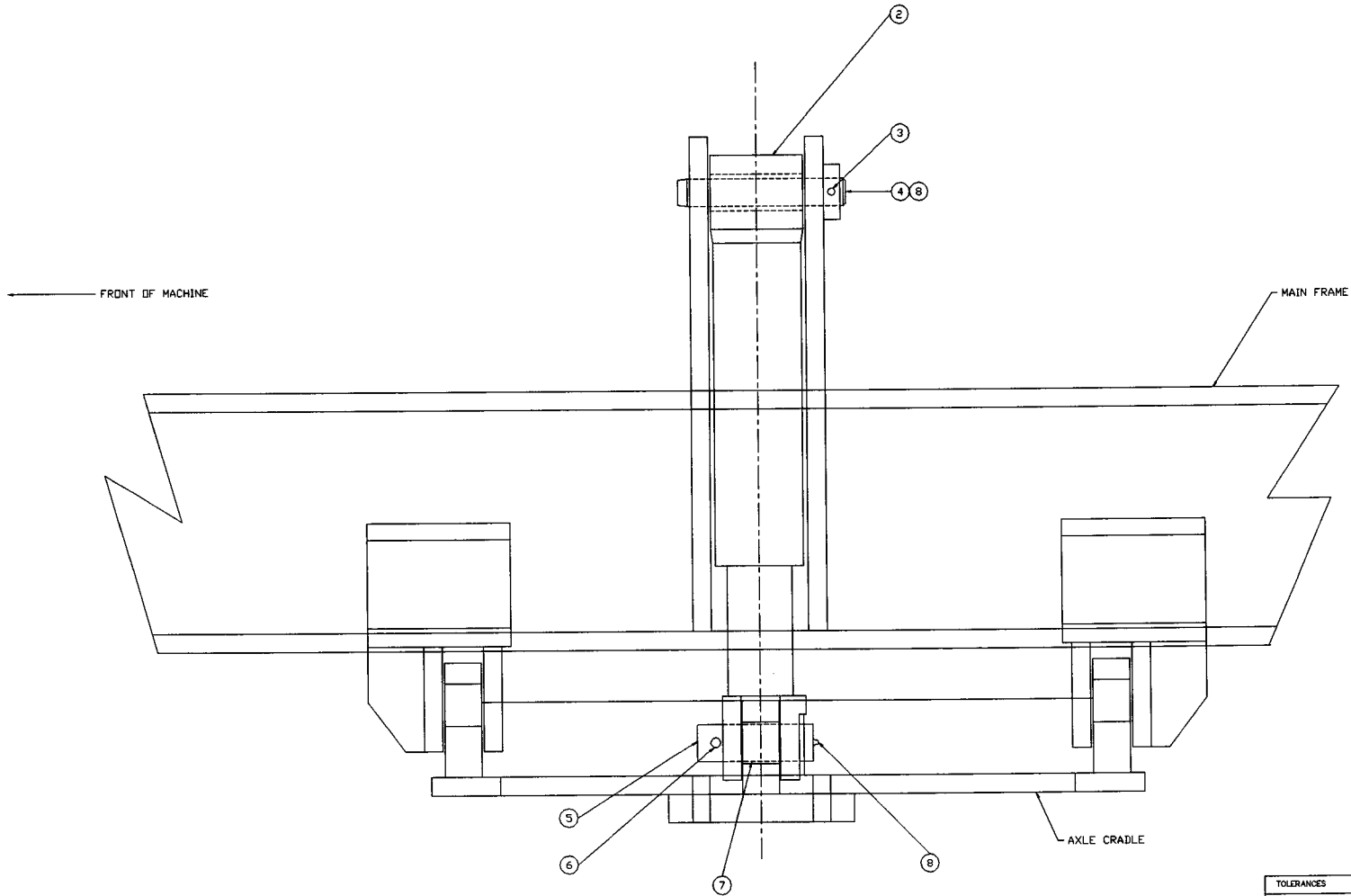


SECTION F

SUSPENSION
SYSTEM



① INSTALLATION

TOLERANCES
UNLESS OTHERWISE SPECIFIED
FRACTIONS \pm / -
3 PLACE DECIMALS \pm / -
2 PLACE DECIMALS \pm / -
1 PLACE DECIMALS \pm / -
ANGLES
SEE SWINGMASTER SPECIFICATION
G-1 FOR TOLERANCES NOT SPECIFIED
DIMENSIONS ARE IN INCHES
DO NOT SCALE DRAWING
SCALE 1=3

SWINGMASTER CORPORATION	
11415 MELROSE AVENUE	
FRANKLIN PARK, ILLINOIS 60131	
AXLE LOCK CYLINDER INSTALLATION	
DRAWN BY: J.K.	DRAWING NO.
DATE: 7-24-98	D-176

MACHINE	SECTION	6
-----	-----	-----
MODEL SL180 SWINGLOADER	SUSPENSION SYSTEM	
-----	-----	-----

ASSEMBLY
NUMBER

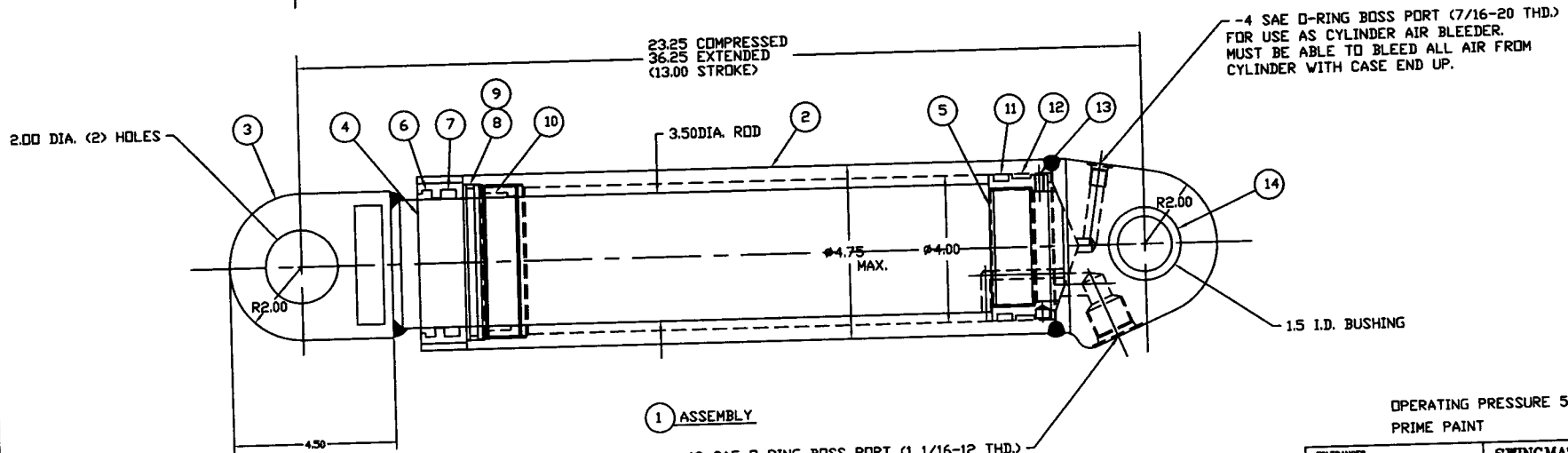
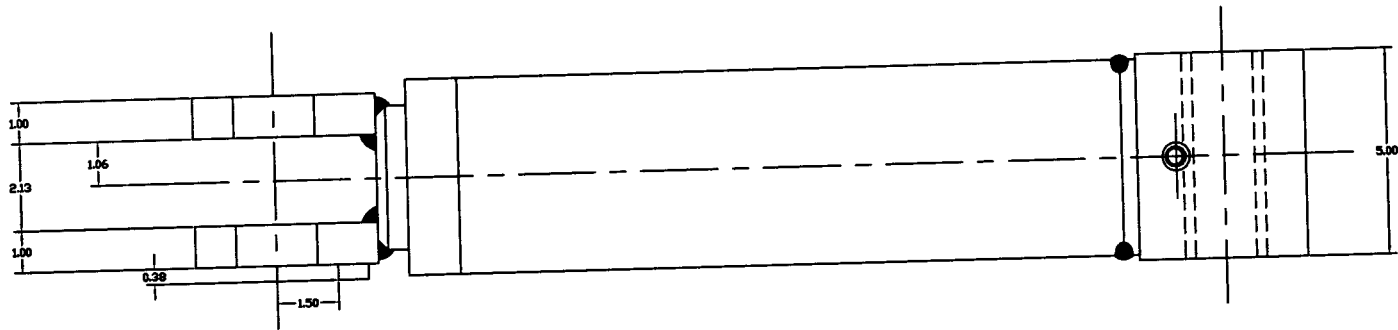
DESCRIPTION

1802008

AXLE LOCK CYLINDER INSTALLATION

ITEM NO.	PART NUMBER	DESCRIPTION	QTY. USED
002	1802009	AXLE LOCK CYLINDER	2.00
003	1801588	COTTER PIN 7/16" DIA. X 3" LONG	2.00
004	1802010	1.50" DIA. PIN X 9 1/16" LONG	2.00
005	1802011	2.00" DIA. PIN X 6 1/4" LONG	2.00
006	1800583	COTTER PIN 1/2 X 5" LONG	2.00
007	1802012	2.00" I.D. STEEL BUSHING	2.00
008	1800663	STRAIGHT 1/8" MALE-PIPE GREASE FITTING	4.00

NOTE:
 MODEL 361 : CONVERTS FROM 2001361L017 TO CURRENT.
 MODEL SL180 : CONVERTS FROM 99SL18020L0006 AND ~8 TO CURRENT.



1 ASSEMBLY
 -12 SAE O-RING BOSS PORT (1 1/16-12 THD.)
 MAIN PRESSURE LINE FOR SINGLE ACTING CYLINDER

OPERATING PRESSURE 5000 PSI
 PRIME PAINT

TOLERANCES
 UNLESS OTHERWISE SPECIFIED
 FRACTIONS +/-
 3 PLACE DECIMALS +/-
 2 PLACE DECIMALS +/-
 1 PLACE DECIMALS +/-
 ANGLES
 SEE SWINGMASTER SPECIFICATION
 G-1 FOR TOLERANCES NOT SPECIFIED
 DIMENSIONS ARE IN INCHES
 DO NOT SCALE DRAWING
 SCALE: 1/2"

SWINGMASTER CORPORATION
 11415 MELROSE AVENUE
 FRANKLIN PARK, ILLINOIS 60151
 AXLE LOCK CYLINDER
 SINGLE ACTING CYLINDER
 MODEL 361
 DRAWN BY: R.O. DATE: 8-19-88
 DRAWING NO. SHEET 1 OF 2
 D-175

REV	DATE	DESCRIPTION	ENG. NO.	BY
10-14-81		MAJOR CHANGE		JJC

MACHINE

SECTION

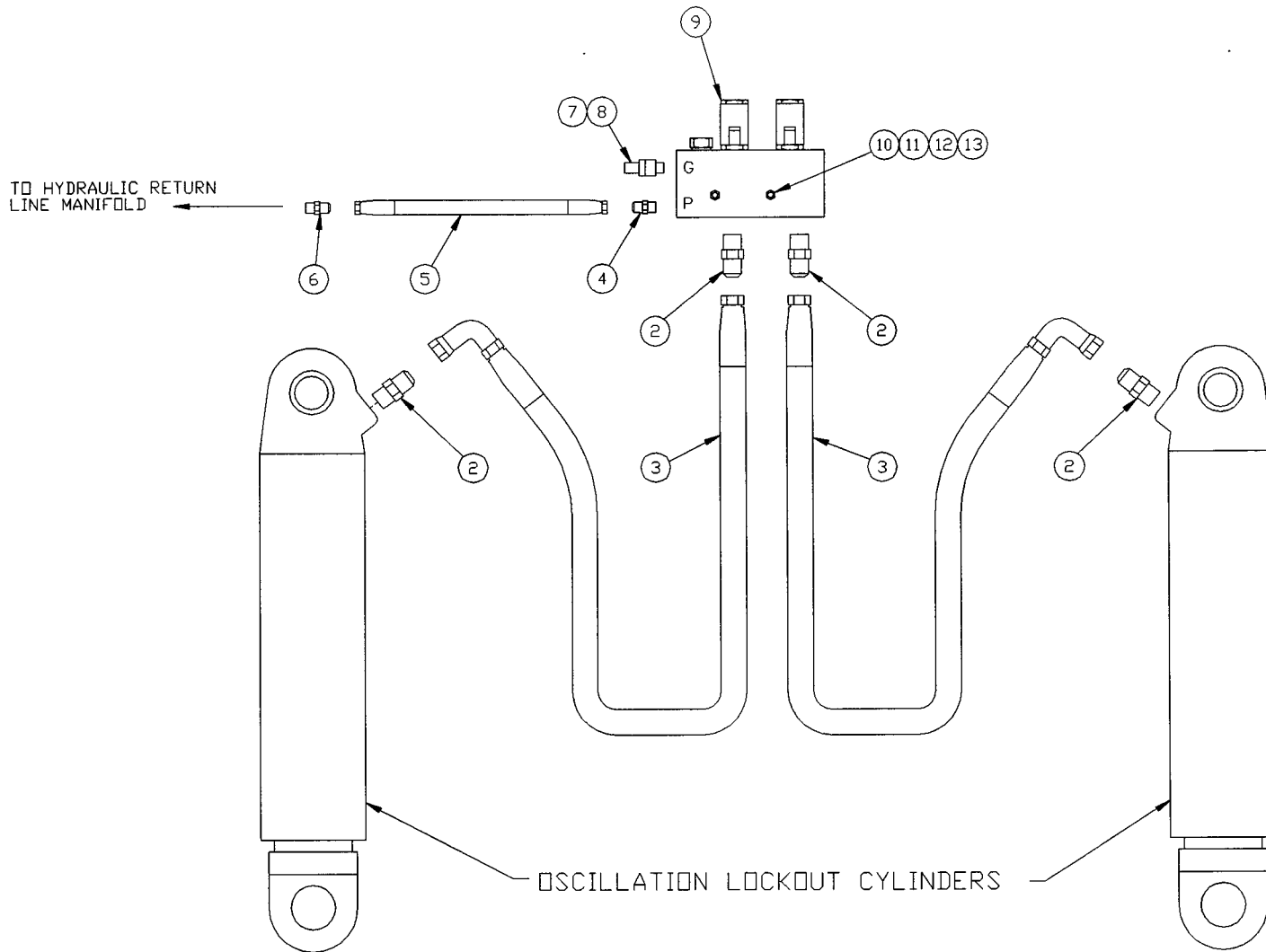
6

MODEL SL180 SWINGLOADER

SUSPENSION SYSTEM

ASSEMBLY NUMBER	DESCRIPTION
1802009	AXLE LOCK CYLINDER

ITEM NO.	PART NUMBER	DESCRIPTION	QTY USED
2	1806847	CASE WELDMENT	1
3	1806848	ROD WELDMENT	1
4	1806849	HEAD GLAND	1
5	1806850	PISTON	1
6	1806448	WIPER	1
7	1806444	ROD SEAL	1
8	1806851	"O" RING	1
9	1806852	BACK-UP RING	1
10	1806853	WEAR RING	2
11	1806854	"T" RING	1
12	1806855	WEAR RING	1
13	1806856	SET SCREW	1
14	1802745	BUSHING	2



1 INSTALLATION

<p>TOLERANCES</p> <p>UNLESS OTHERWISE SPECIFIED</p> <p>FRACTIONS +/-</p> <p>3 PLACE DECIMALS +/-</p> <p>2 PLACE DECIMALS +/-</p> <p>1 PLACE DECIMALS +/-</p> <p>ANGLES</p> <p>SEE SWINGMASTER SPECIFICATION</p> <p>G-1 FOR TOLERANCES NOT SPECIFIED</p> <p>DIMENSIONS ARE IN INCHES</p> <p>DO NOT SCALE DRAWING</p> <p>SCALE :</p>		<p>SWINGMASTER CORPORATION</p> <p>11415 MELROSE AVENUE FRANKLIN PARK, ILLINOIS 60131</p>	
		<p>OSCILLATION LOCKOUT VALVE LINES & FITTINGS INSTALLATION</p>	
		<p>DRAWN BY: J.K.</p> <p>DATE: 7-24-98</p>	<p>DRAWING NO.</p> <p>C-144</p>

MACHINE

SECTION

6

MODEL SL180 SWINGLOADER

SUSPENSION SYSTEM

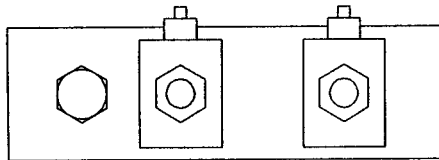
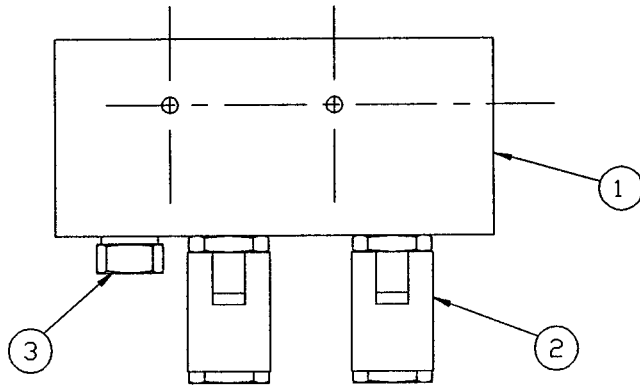
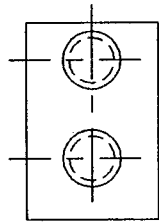
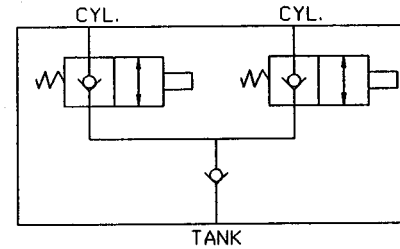
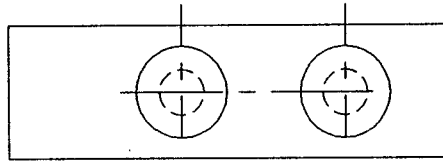
ASSEMBLY
NUMBER

DESCRIPTION

1802421

OSCIL. LOCKOUT VALVE LINES & FITTINGS

ITEM NO.	PART NUMBER	DESCRIPTION	QTY. USED
002	1800770	STRAIGHT MALE 3/4 O-RING TO 3/4 TUBE	4.00
003	1802424	HOSE ASSEMBLY FC254-12	2.00
004	1800762	STRAIGHT MALE 3/8 O-RING TO 3/8 TUBE	1.00
005	1801660	HOSE ASSEMBLY 1503-6	1.00
006	1801665	STRAIGHT MALE 3/4 O-RING TO 3/8 TUBE	1.00
007	1800875	PRESSURE SENSING COUPLING - 3/8 O-RING	1.00
008	1800876	DUST CAP	1.00
009	1802423	OSCILLATION LOCKOUT MANIFOLD BLOCK	1.00
010	1802422	H.H.C.S. 1/4-20 X 2 1/2" LONG	2.00
011	1800548	1/4" FLAT WASHER	2.00
012	1800567	1/4" LOCK WASHER	2.00
013	1800510	HEX NUT 1/4-20	2.00



NOTE: ALL PORTS -12 (1-1/16-12 THD.) S.A.E. O-RING BOSS
UNLESS OTHERWISE STATED

RATED PRESSURE 5000 PSI

TOLERANCES	SWINGMASTER CORPORATION	
UNLESS OTHERWISE SPECIFIED FRACTIONS +/- 3 PLACE DECIMALS +/- 2 PLACE DECIMALS +/- 1 PLACE DECIMALS +/- ANGLES		
SEE SWINGMASTER SPECIFICATION G-1 FOR TOLERANCES NOT SPECIFIED	OSCILLATION LOCKOUT VALVE	
DIMENSIONS ARE IN INCHES DO NOT SCALE DRAWING SCALE:	MODEL 361	
	DRAWN BY: B.V. DATE: 9-21-88	DRAWING NO. H-161

MACHINE

SECTION

6

MODEL 361 SWINGLOADER

SUSPENSION SYSTEM

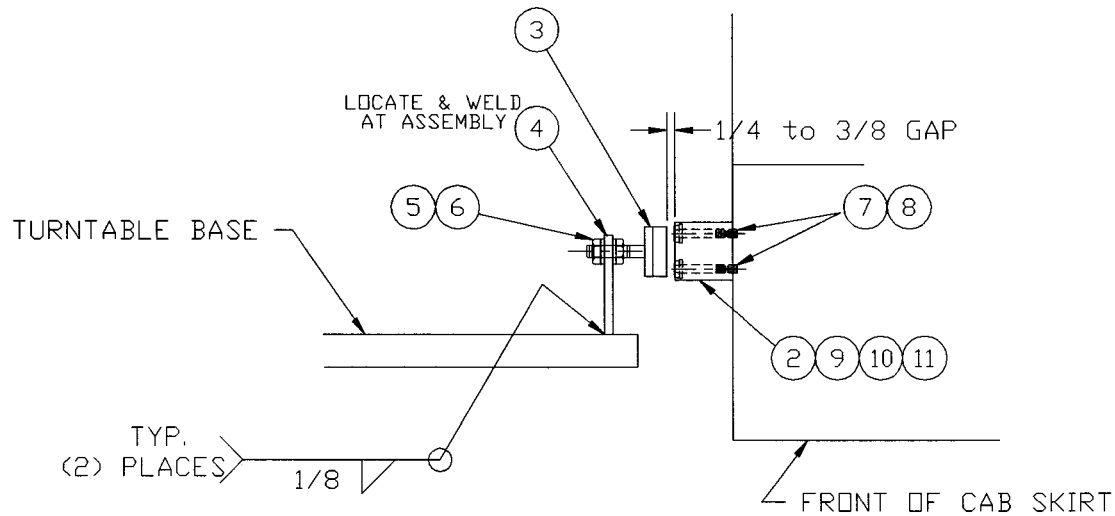
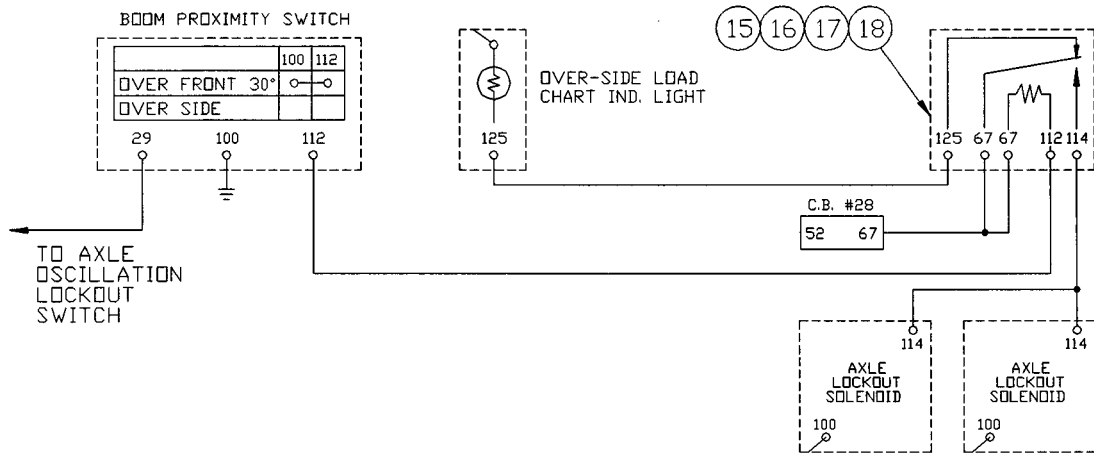
ASSEMBLY
NUMBER

DESCRIPTION

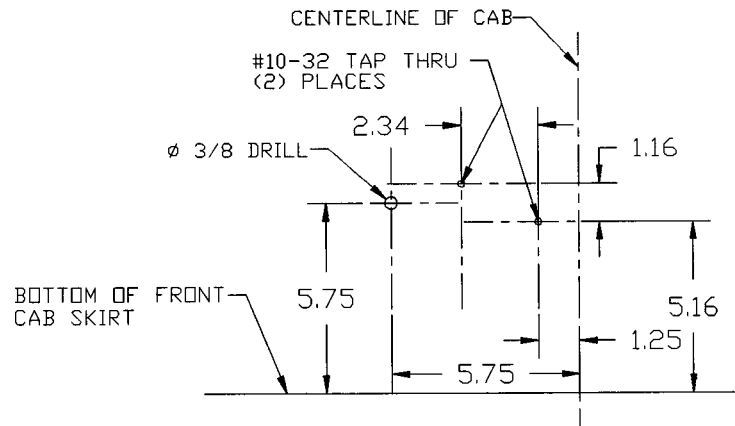
1802423

OSCILLATION LOCKOUT MANIFOLD BLOCK

ITEM NO.	PART NUMBER	DESCRIPTION	QTY. USED
1	8703232	MANIFOLD BLOCK	1
2	8703233	SOLENOID VALVE	1
3	8703234	CHECK VALVE	1



1 INSTALLATION



TOLERANCES UNLESS OTHERWISE SPECIFIED FRACTIONS +/- 3 PLACE DECIMALS +/- 2 PLACE DECIMALS +/- 1 PLACE DECIMALS +/- ANGLES SEE SWINGMASTER SPECIFICATION G-1 FOR TOLERANCES NOT SPECIFIED DIMENSIONS ARE IN INCHES DO NOT SCALE DRAWING SCALE: 1/2	SWINGMASTER CORPORATION 11415 MELROSE AVENUE FRANKLIN PARK, ILLINOIS 60131	
	BOOM LOCATION SENSOR INSTALLATION	
DRAWN BY: J.K. DATE: 7-24-98	DRAWING NO. H-416	

MACHINE

SECTION

6

MODEL SL180 SWINGLOADER

SUSPENSION SYSTEM

ASSEMBLY
NUMBER

DESCRIPTION

1805790

BOOM LOCATION SENSOR INSTALLATION

ITEM NO.	PART NUMBER	DESCRIPTION	QTY. USED
002	1802085	PROXIMITY SENSOR	1.00
003	1805791	SENSOR PLATE	1.00
004	1805792	MOUNTING PLATE	2.00
005	1800568	3/8" LOCK WASHER	4.00
006	1800514	HEX NUT 3/8-16	4.00
007	1804222	R.H.M.S. #10-32 X 1 3/4" LONG	2.00
008	1800566	#10 LOCK WASHER	2.00
009	1800427	90 DEG. ELBOW - 1/2" PIPE	1.00
010	1800431	RUBBER INSERT, 3-HOLES W/WASHER	1.00
011	1800435	CAP NUT-COMPRESSION 990-16 NS THD.	1.00
012	1801457	RING TERMINAL #14 GAGE #8 STUD	3.00
013	1801096	14 GAGE SELF INSULATED FEMALE DISCONNECT	1.00
014	1801086	BULK 14 GA.WIRE/(FT)	
015	1800381	RELAY SWITCH - SPST 12V	1.00
016	1800433	H.H.C.S. 1/4-20 X 5/8" LONG	1.00
017	1800567	1/4" LOCK WASHER	1.00
018	1800510	HEX NUT 1/4-20	1.00