



SECTION F  
SUSPENSION SYSTEM

---

SWINGMASTER CORPORATION

PARTS BOOK

---

MACHINE

SECTION

-----  
MODEL 361 SWINGLOADER  
-----

-----  
SUSPENSION SYSTEM  
-----

DESCRIPTION

-----  
AXLE LOCK CYLINDER INSTALLATION  
    AXLE LOCK CYLINDER

OSCILLATION LOCKOUT VALVE LINES AND FITTINGS  
    OSCILLATION LOCKOUT VALVE

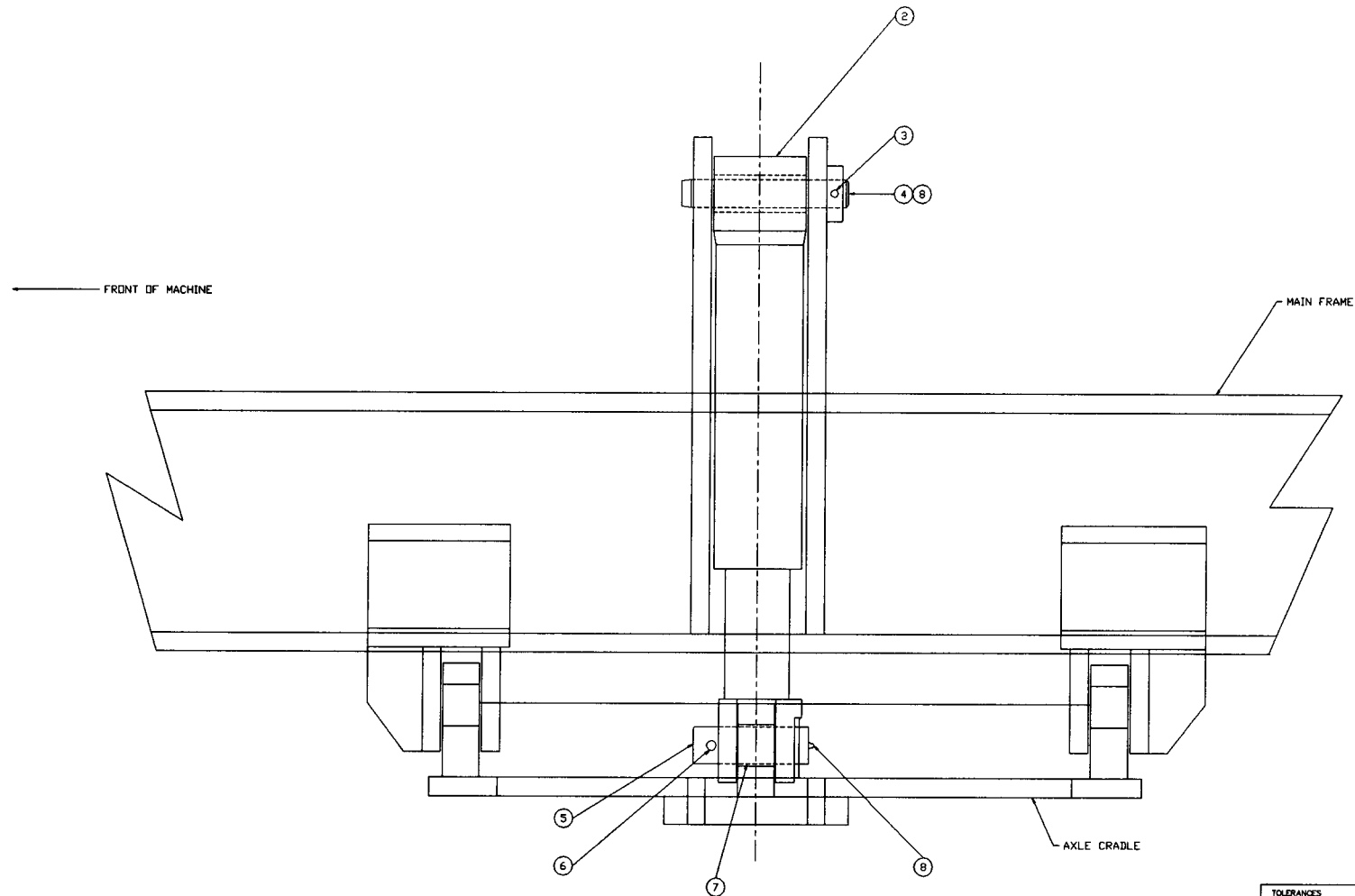
BOOM LOCATION SENSOR INSTALLATION  
-----

---

SWINGMASTER CORPORATION  
11415 MELROSE AVENUE  
FRANKLIN PARK, ILLINOIS 60131

TELEPHONE: (847) 451-1224

---



1 INSTALLATION

<b>TOLERANCES</b> UNLESS OTHERWISE SPECIFIED FRACTIONS +/- 3 PLACE DECIMALS +/- 2 PLACE DECIMALS +/- 1 PLACE DECIMALS +/- ANGLES	<b>SWINGMASTER CORPORATION</b> 11415 MELROSE AVENUE FRANKLIN PARK, ILLINOIS 60131	
	<b>AXLE LOCK CYLINDER INSTALLATION</b>	
SEE SWINGMASTER SPECIFICATION G-1 FOR TOLERANCES NOT SPECIFIED	<b>MODEL 361</b>	<b>DRAWING NO.</b> D-176
DIMENSIONS ARE IN INCHES DO NOT SCALE DRAWING SCALE: 1=3	<b>DRAWN BY:</b> R.G. <b>DATE:</b> 8-22-68	

MACHINE

SECTION

6

-----  
MODEL 361 SWINGLOADER  
-----

-----  
SUSPENSION SYSTEM  
-----

ASSEMBLY  
NUMBER

DESCRIPTION

-----  
1802008  
-----

-----  
AXLE LOCK CYLINDER INSTALLATION  
-----

ITEM PART

NO. NUMBER DESCRIPTION

QTY.

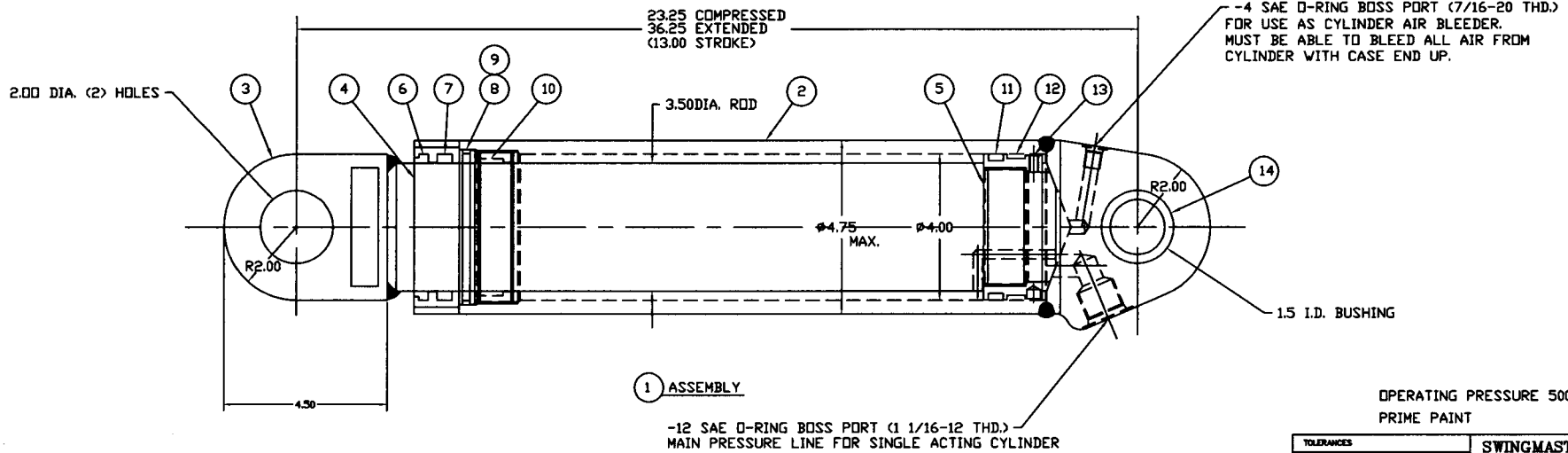
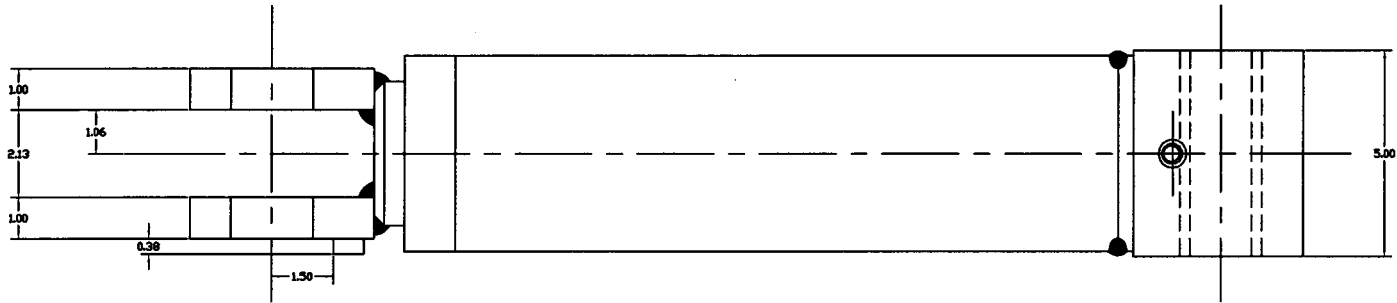
USED

-----

2	1802009	AXLE LOCK CYLINDER	2.00
3	1801588	COTTER PIN 7/16" DIA. X 3" LONG	2.00
4	1802010	1.50" DIA. PIN X 9 1/16" LONG	2.00
5	1802011	2.00" DIA. PIN X 6 1/4" LONG	2.00
6	1800583	COTTER PIN 1/2 X 5" LONG	2.00
7	1802012	2.00" I.D. STEEL BUSHING	2.00
8	1800663	STRAIGHT 1/8" PIPE-M GREASE FITTING	4.00

-----

NOTE:  
 MODEL 361 : CONVERTS FROM 2001361L017 TO CURRENT.  
 MODEL SL180 : CONVERTS FROM 99SL18020L0006 AND ~8 TO CURRENT.



OPERATING PRESSURE 5000 PSI  
 PRIME PAINT

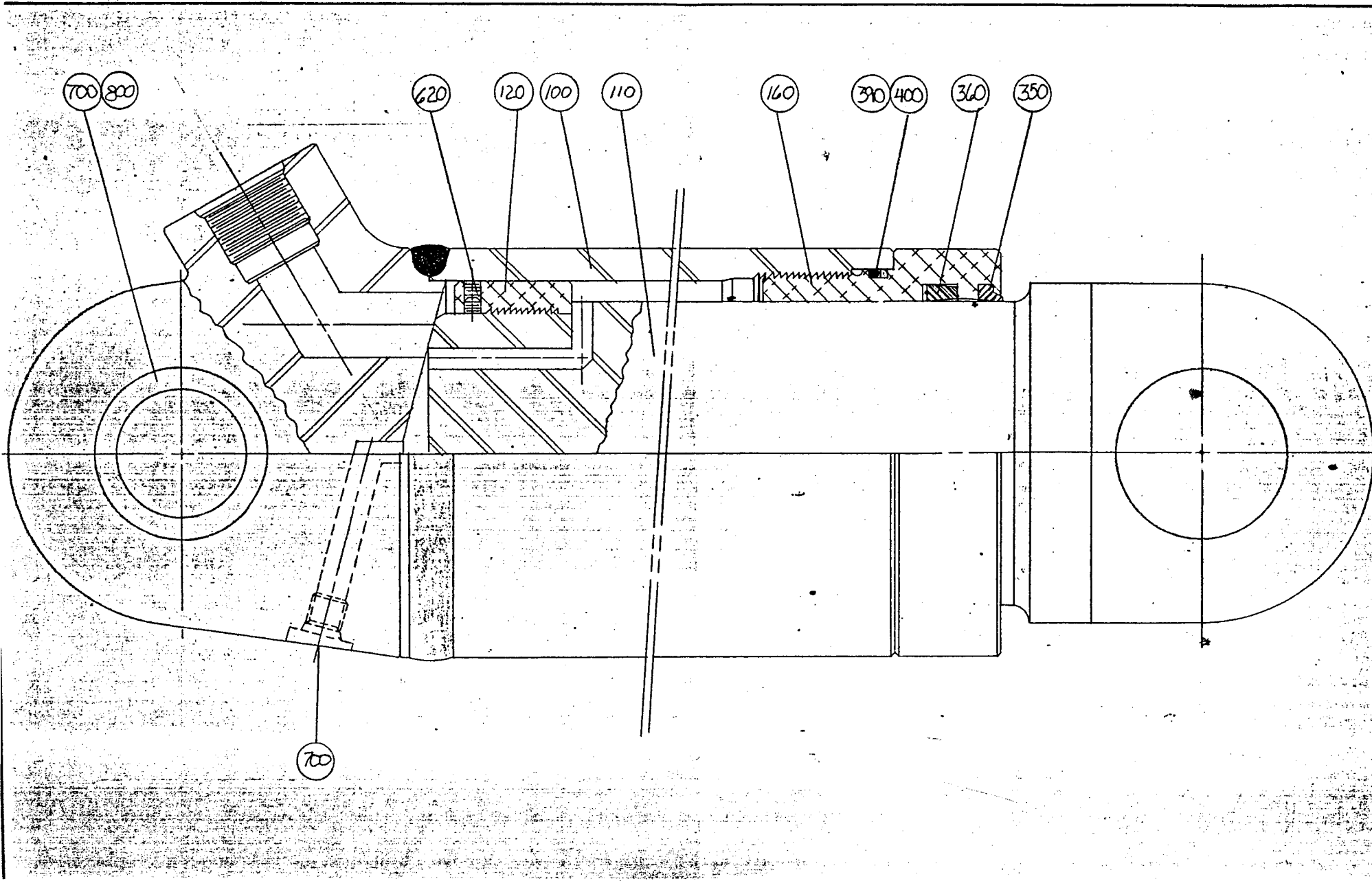
TOLERANCES UNLESS OTHERWISE SPECIFIED FRACTIONS +/- 3 PLACE DECIMALS +/- 2 PLACE DECIMALS +/- 1 PLACE DECIMALS +/- ANGLES	<b>SWINGMASTER CORPORATION</b> 11416 MELROSE AVENUE FRANKLIN PARK, ILLINOIS 60131
	AXLE LOCK CYLINDER SINGLE ACTING CYLINDER MODEL 361
SEE SWINGMASTER SPECIFICATION 0-1 FOR TOLERANCES NOT SPECIFIED DIMENSIONS ARE IN INCHES DO NOT SCALE DRAWING SCALE: 1=2	DRAWN BY: R.O. DATE: 8-19-88
	DRAWING NO. SHEET 1 OF 2 <b>D-175</b>

10-14-01	MAJOR CHANGE	2001R10	J.K.
REV	DATE	DESCRIPTION	ENG. NO. BY

**MACHINE****SECTION****6**-----  
**MODEL 361 SWINGLOADER****SUSPENSION SYSTEM**  
-----**ASSEMBLY  
NUMBER****DESCRIPTION**

1802009 AXLE LOCK CYLINDER -----

<b>ITEM NO.</b>	<b>PART NUMBER</b>	<b>DESCRIPTION</b>	<b>QTY USED</b>
2	1806847	CASE WELDMENT	1
3	1806848	ROD WELDMENT	1
4	1806849	HEAD GLAND	1
5	1806850	PISTON	1
6	1806448	WIPER	1
7	1806444	ROD SEAL	1
8	1806851	"O" RING	1
9	1806852	BACK-UP RING	1
10	1806853	WEAR RING	2
11	1806854	"T" RING	1
12	1806855	WEAR RING	1
13	1806856	SET SCREW	1
14	1802745	BUSHING	2



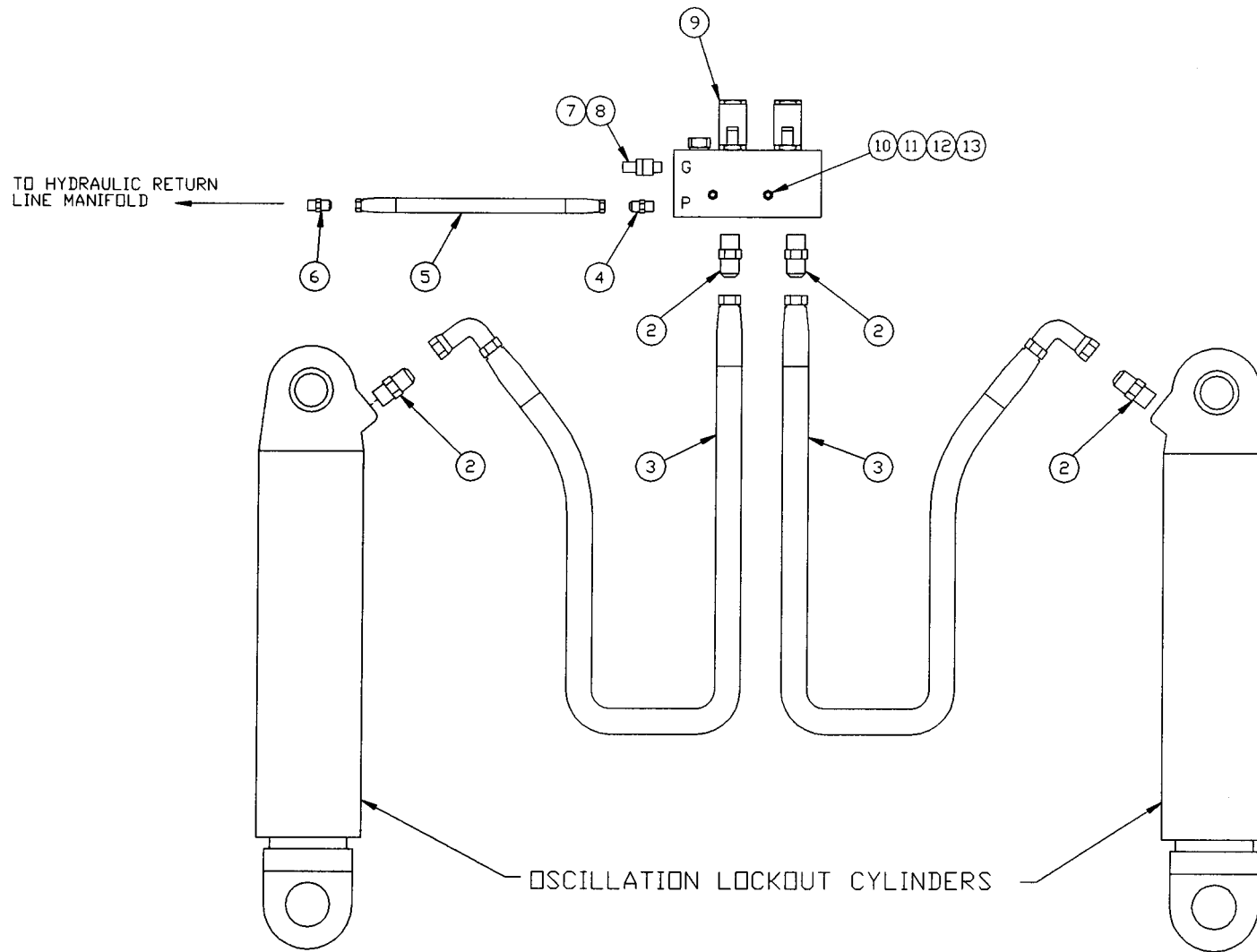
MACHINE SECTION 6  
-----  
MODEL 361 SWINGLOADER SUSPENSION SYSTEM  
-----

ASSEMBLY  
NUMBER DESCRIPTION  
-----  
1802009 AXLE LOCK CYLINDER  
-----

ITEM NO.	PART NUMBER	DESCRIPTION	QTY. USED
100	8702546	CASE ASSEMBLY	1
110	8702535	SHAFT ASSEMBLY	1
120	8702536	PISTON	1
160	8702537	HEAD GLAND	1
350	8702538	WIPER	1
360	8702539	U-CUP	1
390	8702540	O-RING	1
400	8702541	BACK-UP RING	2
620	8702542	S.H.S.S. 1/4-20 X 1/4" LONG	2
650	8702543	METAL PLUG 7/16-20	1
700	1802745	BUSHING	2
800	8702544	BUSHING SPACER	1
	8702545	SEAL KIT - SPECIAL SOFT INCLUDES ITEMS 350-400	1

---





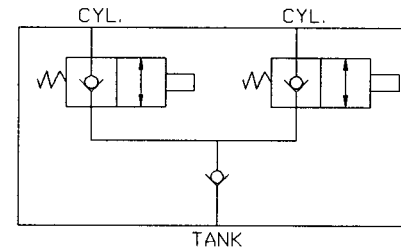
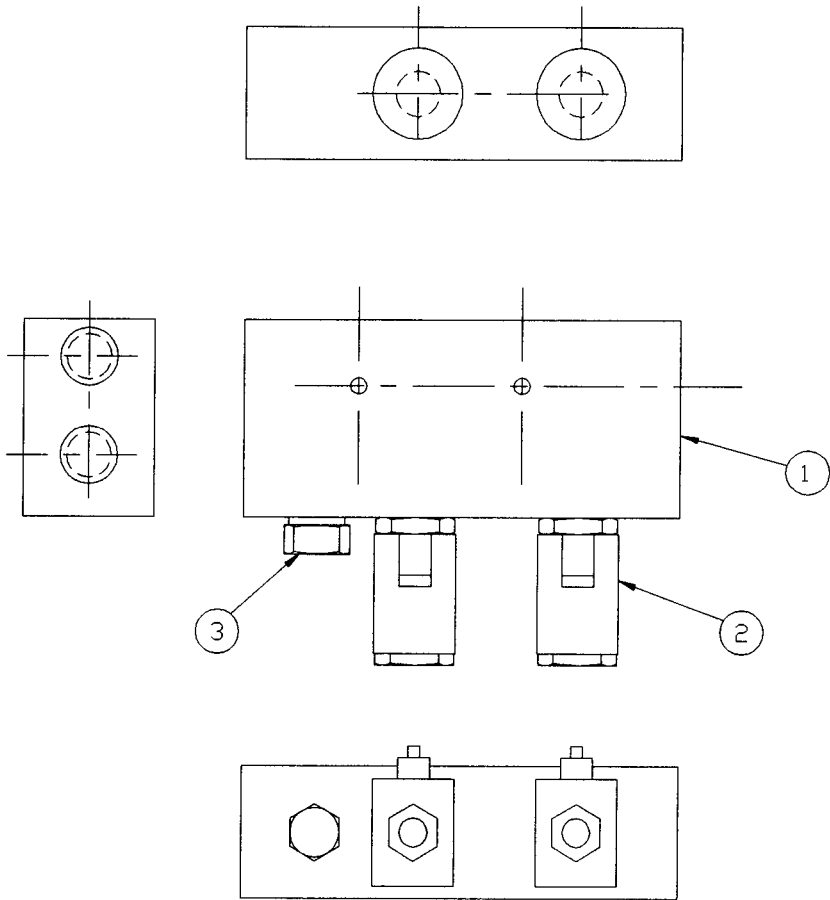
1 INSTALLATION

<p>TOLERANCES</p> <p>UNLESS OTHERWISE SPECIFIED</p> <p>FRACTIONS +/-</p> <p>3 PLACE DECIMALS +/-</p> <p>2 PLACE DECIMALS +/-</p> <p>1 PLACE DECIMALS +/-</p> <p>ANGLES</p> <p>SEE SWINGMASTER SPECIFICATION</p> <p>G-1 FOR TOLERANCES NOT SPECIFIED</p> <p>DIMENSIONS ARE IN INCHES</p> <p>DO NOT SCALE DRAWING</p> <p>SCALE:</p>		<p><b>SWINGMASTER CORPORATION</b></p> <p>11415 MELROSE AVENUE FRANKLIN PARK, ILLINOIS 60131</p>	
		<p>OSCILLATION LOCKOUT VALVE LINES &amp; FITTINGS INSTALLATION</p>	
		<p>MODEL 361</p>	
<p>DRAWN BY: B.W.</p> <p>DATE: 1-31-89</p>	<p>DRAWING NO.</p> <p>C-144</p>		

MACHINE	SECTION	6
MODEL 361 SWINGLOADER	SUSPENSION SYSTEM	

ASSEMBLY NUMBER	DESCRIPTION
1802421	OSCIL. LOCKOUT VALVE LINES & FITTINGS

ITEM NO.	PART NUMBER	DESCRIPTION	QTY. USED
2	1800770	STRAIGHT MALE 3/4 0-RING TO 3/4 TUBE	4.00
3	1802424	HOSE ASSEMBLY FC254-12	2.00
4	1800762	STRAIGHT MALE 3/8 0-RING TO 3/8 TUBE	1.00
5	1801660	HOSE ASSEMBLY 1503-6	1.00
6	1801665	STRAIGHT MALE 3/4 0-RING TO 3/8 TUBE	1.00
7	1800875	PRESSURE SENSING COUPLING - 3/8 0-RING	1.00
8	1800876	FD90 DUST CAP	1.00
9	1802423	OSCILLATION LOCKOUT MANIFOLD BLOCK	1.00
10	1802422	H.H.C.S. 1/4-20 X 2 1/2" LONG	2.00
11	1800548	1/4" FLAT WASHER	2.00
12	1800567	1/4" LOCK WASHER	2.00
13	1800510	HEX NUT 1/4-20	2.00



NOTE: ALL PORTS -12 (1-1/16-12 THD.) S.A.E. O-RING BOSS  
UNLESS OTHERWISE STATED

RATED PRESSURE 5000 PSI

TOLERANCES		SWINGMASTER CORPORATION	
UNLESS OTHERWISE SPECIFIED FRACTIONS +/- 3 PLACE DECIMALS +/- 2 PLACE DECIMALS +/- 1 PLACE DECIMALS +/- ANGLES		11415 MELROSE AVENUE FRANKLIN PARK, ILLINOIS 60131	
SEE SWINGMASTER SPECIFICATION G-1 FOR TOLERANCES NOT SPECIFIED		OSCILLATION LOCKOUT VALVE	
DIMENSIONS ARE IN INCHES DO NOT SCALE DRAWING SCALE:		MODEL 361	DRAWING NO.
		DRAWN BY: B.W.	H-161
		DATE: 9-21-88	

---

SWINGMASTER CORPORATION

PARTS BOOK

---

MACHINE

SECTION

6

-----  
MODEL 361 SWINGLOADER  
-----

-----  
SUSPENSION SYSTEM  
-----

-----  
ASSEMBLY  
NUMBER  
-----

-----  
DESCRIPTION  
-----

1802423  
-----

OSCILLATION LOCKOUT MANIFOLD BLOCK  
-----

ITEM PART

QTY.

NO. NUMBER DESCRIPTION

USED

-----  
1 8703232 MANIFOLD BLOCK  
2 8703233 SOLENOID VALVE  
3 8703234 CHECK VALVE  
-----

-----  
1  
1  
1  
-----

---

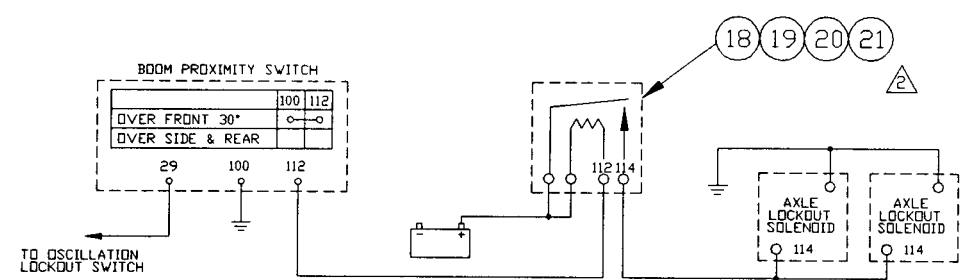
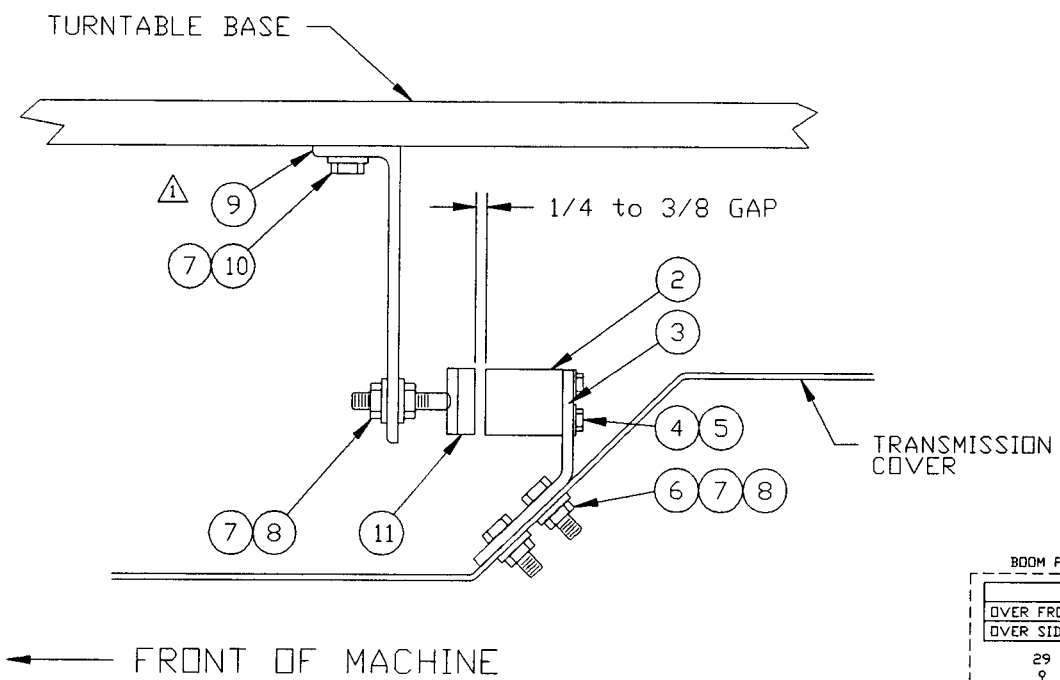
SWINGMASTER CORPORATION

11415 MELROSE AVENUE

FRANKLIN PARK, ILLINOIS 60131

TELEPHONE: (847) 451-1224

---



1 INSTALLATION

2	2-1-89
REV.NO.	DATE

TOLERANCES  
 UNLESS OTHERWISE SPECIFIED  
 FRACTIONS +/-  
 3 PLACE DECIMALS +/-  
 2 PLACE DECIMALS +/-  
 1 PLACE DECIMALS +/-  
 ANGLES  
 SEE SWINGMASTER SPECIFICATION  
 G-1 FOR TOLERANCES NOT SPECIFIED  
 DIMENSIONS ARE IN INCHES  
 DO NOT SCALE DRAWING  
 SCALE :

**SWINGMASTER CORPORATION**  
 11415 MELROSE AVENUE  
 FRANKLIN PARK, ILLINOIS 60131

BOOM LOCATION SENSOR INSTALLATION

MODEL 361

DRAWN BY: B.W.      DRAWING NO.  
 DATE: 11-3-88      H-166

MACHINE	SECTION	6
MODEL 361 SWINGLOADER	SUSPENSION SYSTEM	

ASSEMBLY NUMBER	DESCRIPTION
1802084	BOOM LOCATION SENSOR INSTALLATION

ITEM PART NO. NUMBER DESCRIPTION	QTY. USED
2 1802085 PROXIMITY SENSOR	1.00
3 1802086 MOUNTING PLATE	1.00
4 1801434 ROUND HEAD MACH SCREW #10-32 X 3/4" LONG	2.00
5 1800566 #10 LOCK WASHER	2.00
6 1800454 H.H.C.S. 3/8-16 X 1 1/4" LONG	2.00
7 1800568 3/8" LOCK WASHER	10.00
8 1800514 HEX NUT 3/8-16	6.00
9 1802394 STEEL ANGLE	2.00
10 1800452 H.H.C.S. 3/8-16 X 1" LONG	4.00
11 1802088 BOOM LOCATION PLATE WELDMENT	1.00
12 1800427 90 DEG. ELBOW - 1/2" PIPE	1.00
13 1800431 RUBBER INSERT, 3-HOLES W/WASHER	1.00
14 1800435 CAP NUT-COMPRESSION 990-16 NS THD.	1.00
15 1801457 RING TERMINAL #14 GAGE #8 STUD	3.00
16 1801096 14 GAGE SELF INSULATED FEMALE DISCONNECT	1.00
17 1801086 BULK 14 GA.WIRE/(FT)	0.00
18 1800381 RELAY SWITCH - SPST 12V	1.00
19 1800433 H.H.C.S. 1/4-20 X 5/8" LONG	1.00
20 1800567 1/4" LOCK WASHER	1.00
21 1800510 HEX NUT 1/4-20	1.00