

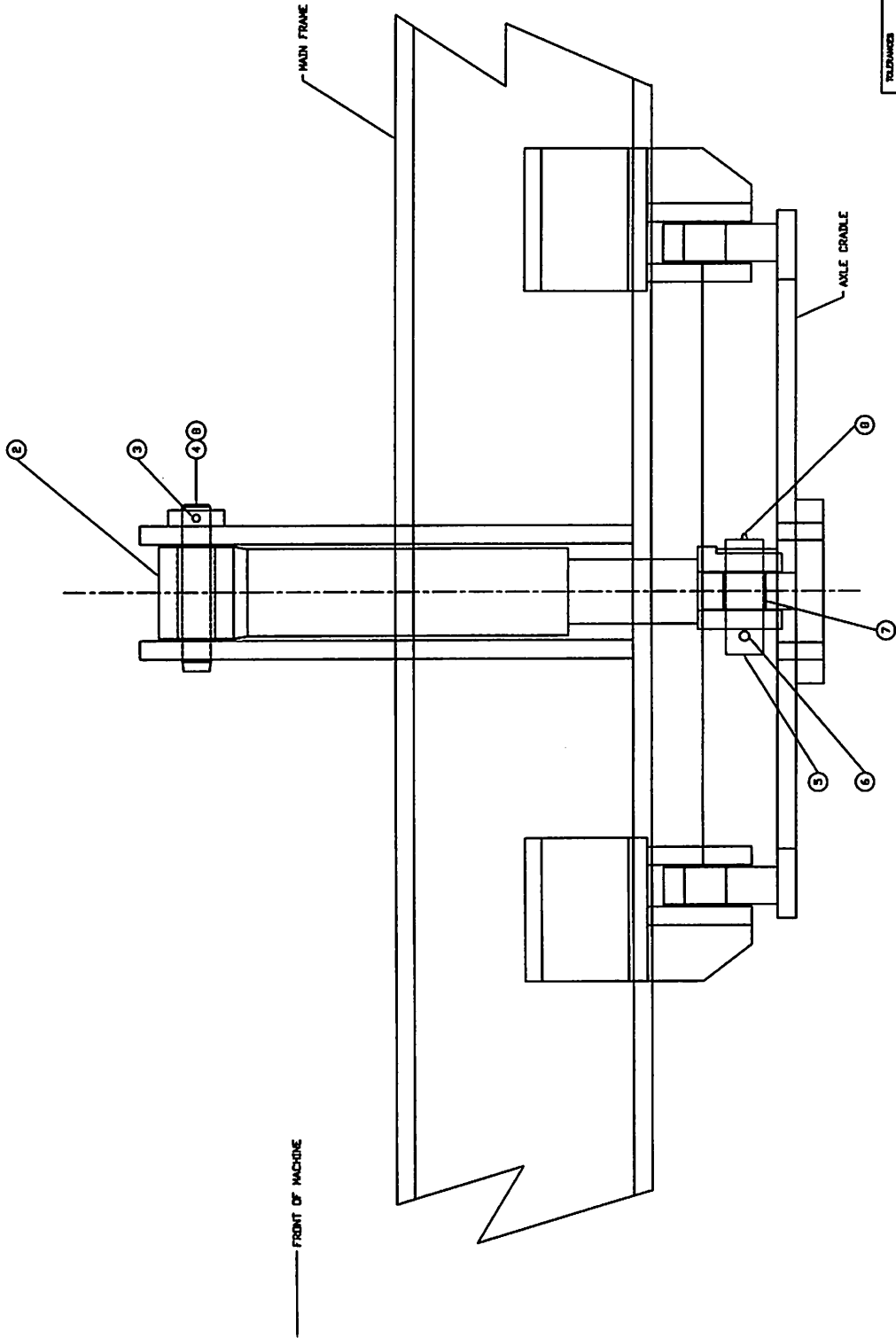


SWINGMASTER

SECTION F

SUSPENSION  
SYSTEM

J



<b>SWINGMASTER CORPORATION</b> 11415 WILSON AVENUE FRAMINGHAM PARK, MASSACHUSETTS 01901	
<b>AXLE LOCK CYLINDER INSTALLATION</b>	
DRAWN BY: J.L. DATE: 7-24-88	DRAWING NO: <b>D-176</b>

TOLERANCES UNLESS OTHERWISE SPECIFIED:  
 FINISHES: 1/2"  
 1/2" PLACE DECIMALS 1/16"  
 1/4" PLACE DECIMALS 1/32"  
 1/8" PLACE DECIMALS 1/64"  
 UNLESS OTHERWISE SPECIFIED  
 DIMENSIONS ARE IN INCHES  
 DIMENSIONS IN PARENTHESES ARE IN MILLIMETERS  
 SCALE: 1:1

MACHINE

SECTION

1

MODEL SL180-13 SWINGLOADER

SUSPENSION SYSTEM

ASSEMBLY  
NUMBER

DESCRIPTION

1802008 AXLE LOCK CYLINDER INSTALLATION

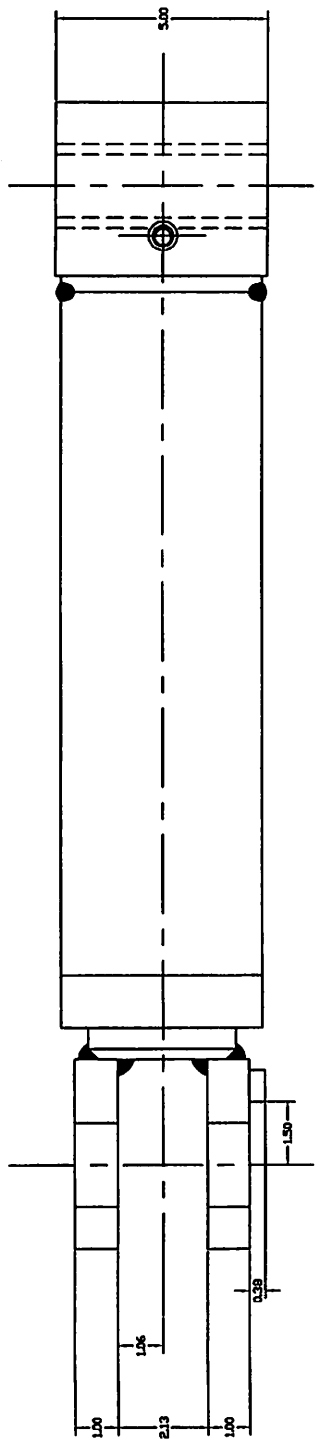
ITEM NO.	PART NUMBER	DESCRIPTION	QTY USED
002	1802009	AXLE LOCK CYLINDER	2
003	1801588	COTTER PIN 7/16" DIA. X 3" LONG	2
004	1802010	1.50" DIA. PIN X 9 1/16" LONG	2
005	1802011	2.00" DIA. PIN X 6 1/4" LONG	2
006	1800583	COTTER PIN 1/2 X 5" LONG	2
007	1802012	2.00" I.D. STEEL BUSHING	2
008	1800663	STRAIGHT 1/8" MALE-PIPE GREASE FITTING	4

SWINGMASTER CORPORATION

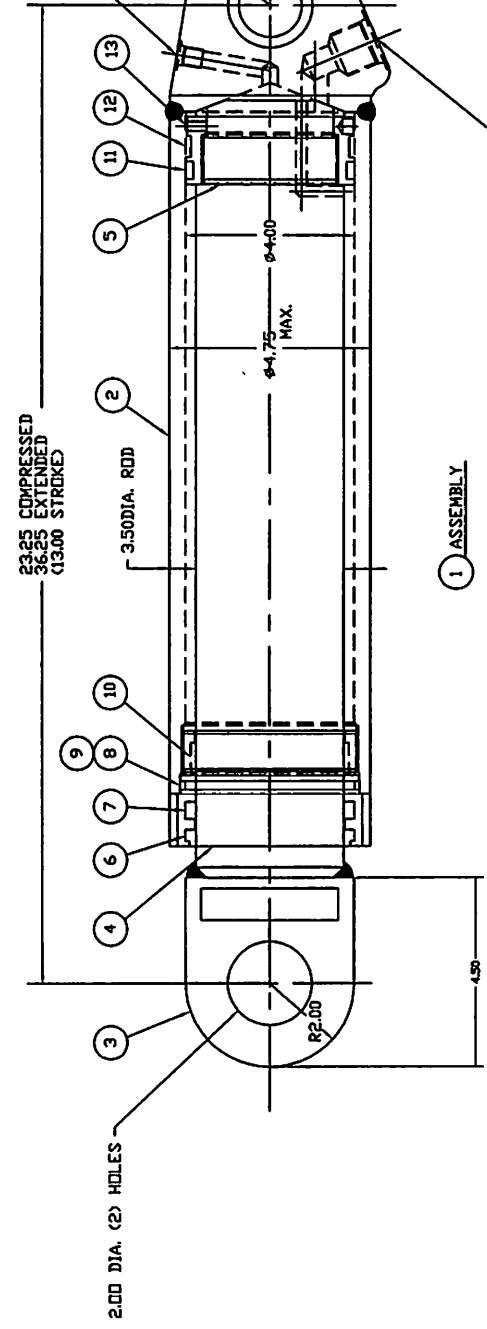
11415 MELROSE AVENUE

FRANKLIN PARK, ILLINOIS 60131

TEL: (847) 451-1224



-4 SAE O-RING BOSS PORT (7/16-20 THD.)  
FOR USE AS CYLINDER AIR BLEEDER.  
MUST BE ABLE TO BLEED ALL AIR FROM  
CYLINDER WITH CASE END UP.



1 ASSEMBLY

-12 SAE O-RING BOSS PORT (1/16-12 THD.)  
MAIN PRESSURE LINE FOR SINGLE ACTING CYLINDER

OPERATING PRESSURE 5000 PSI  
PRIME PAINT

TOLERANCES UNLESS OTHERWISE SPECIFIED	SWINGMASTER CORPORATION
3 PLACE DECIMALS +/-	11415 WILLOW AVENUE
2 PLACE DECIMALS +/-	FRANKLIN PARK, ILLINOIS 60151
1 PLACE DECIMALS +/-	ANGLE LOCK CYLINDER
ANGLES	SINGLE ACTING CYLINDER
SEE SWINGMASTER SPECIFICATION	MODEL 361
0-1 FOR TOLERANCES NOT SPECIFIED	DRAWN BY: R.C.
DIMENSIONS ARE IN INCHES	DATE: 9-15-88
UNLESS OTHERWISE SPECIFIED	
SCALE: 1" = 1"	
	DRAWING NO. SHEET 1 OF 2
	D-175

MACHINE

SECTION

1

MODEL SL180-13 SWINGLOADER

SUSPENSION SYSTEM

ASSEMBLY  
NUMBER

DESCRIPTION

1802009 AXLE LOCK CYLINDER

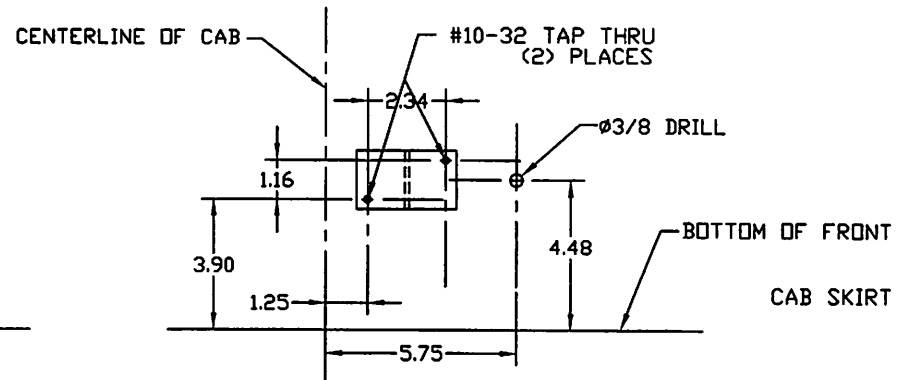
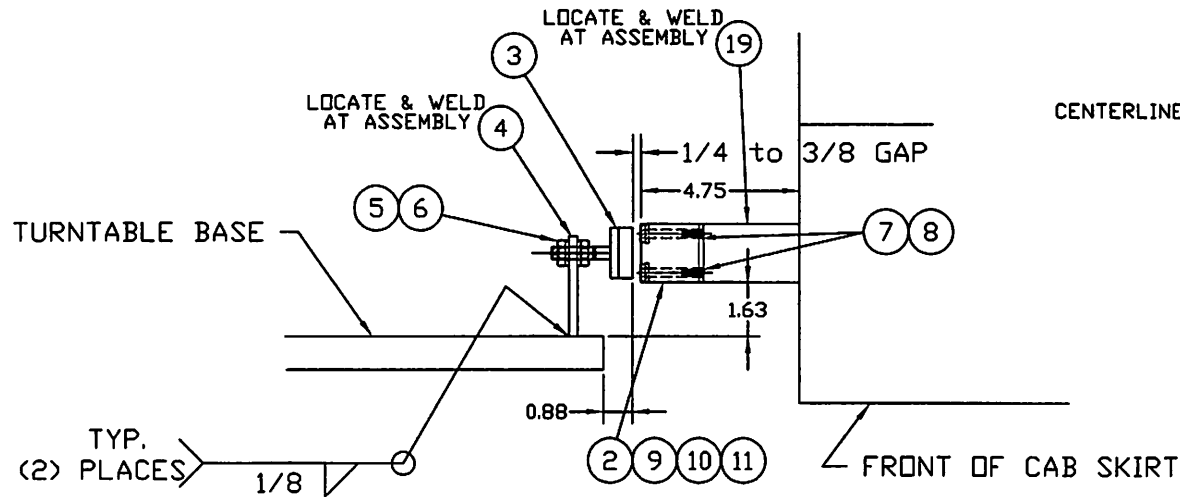
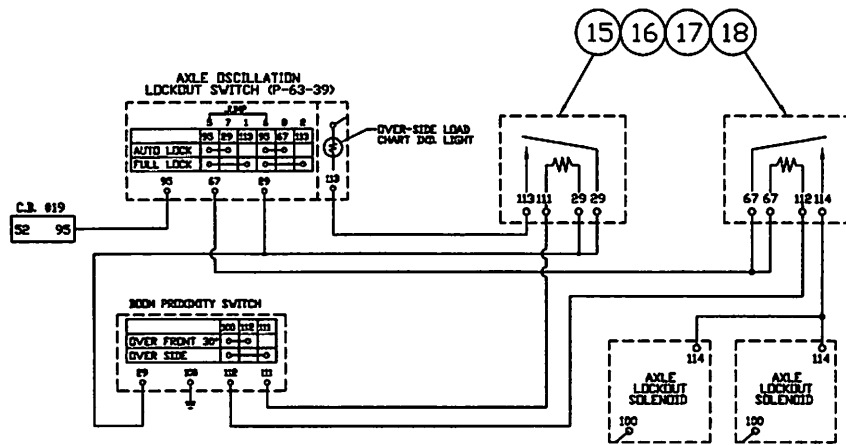
ITEM NO.	PART NUMBER	DESCRIPTION	QTY USED
2	1806847	CASE WELDMENT	1
3	1806848	ROD WELDMENT	1
4	1806849	HEAD GLAND	1
5	1806850	PISTON	1
6	1806448	WIPER	1
7	1806444	ROD SEAL	1
8	1806851	"O" RING	1
9	1806852	BACK-UP RING	1
10	1806853	WEAR RING	2
11	1806854	"T" RING	1
12	1806855	WEAR RING	1
13	1806856	SET SCREW	1
14	1802745	BUSHING	2

SWINGMASTER CORPORATION

11415 MELROSE AVENUE

FRANKLIN PARK, ILLINOIS 60131

TEL: (847) 451-1224



1 INSTALLATION

<b>TOLERANCES</b> UNLESS OTHERWISE SPECIFIED FRACTIONS +/- 3 PLACE DECIMALS +/- 2 PLACE DECIMALS +/- 1 PLACE DECIMALS +/- ANGLES	<b>SWINGMASTER CORPORATION</b> 11415 MELROSE AVENUE FRANKLIN PARK, ILLINOIS 60131	
	<b>BOOM LOCATION SENSOR INSTALLATION</b>	
SEE SWINGMASTER SPECIFICATION G-1 FOR TOLERANCES NOT SPECIFIED	<b>FOR MODEL 181TCHD.</b>	
DIMENSIONS ARE IN INCHES DO NOT SCALE DRAWING SCALE: 1/2	DRAWN BY: J.K. DATE: 8-14-08	DRAWING NO. <b>H1-416</b>

MACHINE

SECTION

1

MODEL SL180-13 SWINGLOADER

SUSPENSION SYSTEM

ASSEMBLY NUMBER		DESCRIPTION	
1806844		BOOM LOCATION SENSOR INSTALLATION	
ITEM NO.	PART NUMBER	DESCRIPTION	QTY USED
002	1802085	PROXIMITY SENSOR	1
003	1806845	SENSOR PLATE	1
004	1805792	MOUNTING PLATE	2
005	1800568	3/8" LOCK WASHER	4
006	1800514	HEX NUT 3/8-16	4
007	1804222	R.H.M.S. #10-32 X 1 3/4" LONG	2
008	1800566	#10 LOCK WASHER	2
009	1800427	90 DEG. ELBOW - 1/2" PIPE	1
010	1800431	RUBBER INSERT, 3-HOLES W/WASHER	1
011	1800435	CAP NUT-COMPRESSION 990-16 NS THD.	1
012	1801457	RING TERMINAL #14 GAGE #8 STUD	3
013	1801096	14 GAGE SELF INSULATED FEMALE DISCONNECT	1
014	1801086	BULK 14 GA.WIRE/(FT)	0
015	1800381	RELAY SWITCH - SPST 12V	1
016	1800433	H.H.C.S. 1/4-20 X 5/8" LONG	1
017	1800567	1/4" LOCK WASHER	1
018	1800510	HEX NUT 1/4-20	1
19	1806846	SENSOR MTG. WLDM'T	0

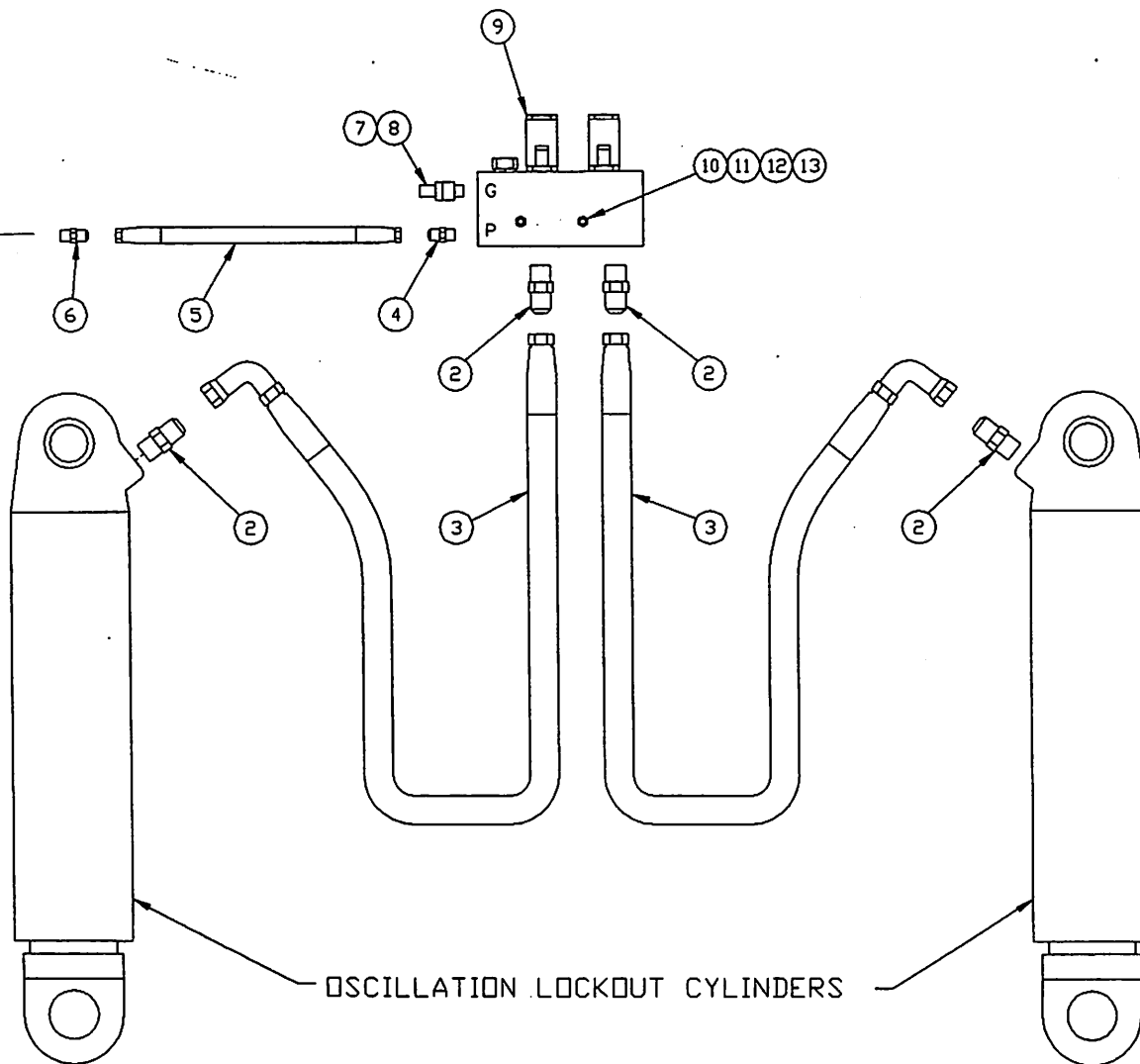
SWINGMASTER CORPORATION

11415 MELROSE AVENUE

FRANKLIN PARK, ILLINOIS 60131

TEL: (847) 451-1224

TO HYDRAULIC RETURN  
LINE MANIFOLD



OSCILLATION LOCKOUT CYLINDERS

1 INSTALLATION

TOLERANCES

UNLESS OTHERWISE SPECIFIED  
 FRACTIONS +/-  
 3 PLACE DECIMALS +/-  
 2 PLACE DECIMALS +/-  
 1 PLACE DECIMALS +/-  
 ANGLES

SEE SWINGMASTER SPECIFICATION  
 G-1 FOR TOLERANCES NOT SPECIFIED

DIMENSIONS ARE IN INCHES  
 DO NOT SCALE DRAWING  
 SCALE:

SWINGMASTER CORPORATION

11415 MELROSE AVENUE  
 FRANKLIN PARK, ILLINOIS 60131

OSCILLATION LOCKOUT VALVE LINES &

FITTINGS INSTALLATION

DRAWN BY: J.K.

DATE: 7-24-98

DRAWING NO.

C-144



MACHINE

SECTION

1

MODEL SL180-13 SWINGLOADER

SUSPENSION SYSTEM

ASSEMBLY  
NUMBER

DESCRIPTION

-----  
1802421  
----------  
OSCIL. LOCKOUT VALVE LINES & FITTINGS  
-----

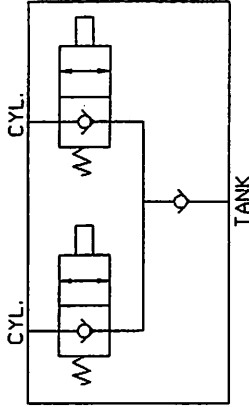
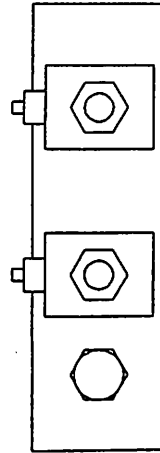
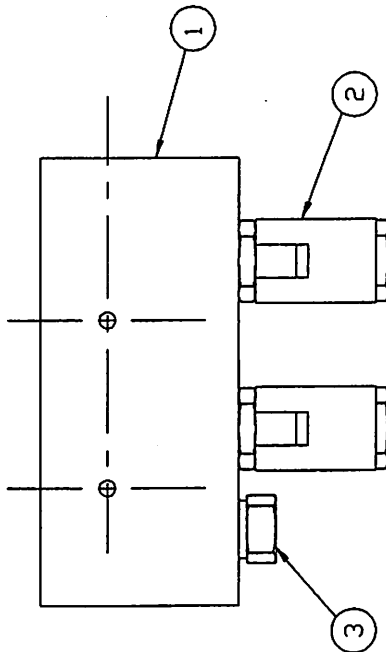
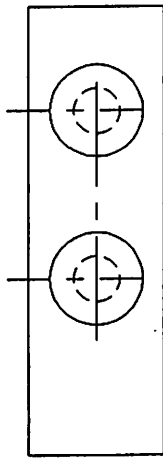
ITEM NO.	PART NUMBER	DESCRIPTION	QTY. USED
002	1800770	STRAIGHT MALE 3/4 O-RING TO 3/4 TUBE	4.00
003	1802424	HOSE ASSEMBLY FC254-12	2.00
004	1800762	STRAIGHT MALE 3/8 O-RING TO 3/8 TUBE	1.00
005	1801660	HOSE ASSEMBLY 1503-6	1.00
006	1801665	STRAIGHT MALE 3/4 O-RING TO 3/8 TUBE	1.00
007	1800875	PRESSURE SENSING COUPLING - 3/8 O-RING	1.00
008	1800876	DUST CAP	1.00
009	1802423	OSCILLATION LOCKOUT MANIFOLD BLOCK	1.00
010	1802422	H.H.C.S. 1/4-20 X 2 1/2" LONG	2.00
011	1800548	1/4" FLAT WASHER	2.00
012	1800567	1/4" LOCK WASHER	2.00
013	1800510	HEX NUT 1/4-20	2.00

SWINGMASTER CORPORATION

11415 MELROSE AVENUE

FRANKLIN PARK, ILLINOIS 60131

TEL: (847) 451-1224



NOTE: ALL PORTS -12 (1-1/16-12 THD.) S.A.E. O-RING BOSS  
UNLESS OTHERWISE STATED

RATED PRESSURE 5000 PSI

**TOLERANCES**

UNLESS OTHERWISE SPECIFIED  
FRACTIONS +/-  
3 PLACE DECIMALS +/-  
2 PLACE DECIMALS +/-  
1 PLACE DECIMALS +/-  
ANGLES

SEE SWINGMASTER SPECIFICATION  
G-1 FOR TOLERANCES NOT SPECIFIED  
DIMENSIONS ARE IN INCHES  
DO NOT SCALE DRAWING  
SCALE 1

**SWINGMASTER CORPORATION**

11415 MELROSE AVENUE  
FRANKLIN PARK, ILLINOIS 60131

OSCILLATION LOCKOUT VALVE

MODEL 361

DRAWN BY: B.V.

DATE: 9-21-88

DRAWING NO.

H-161

---

MACHINE	SECTION	1
---------	---------	---

---

MODEL SL180-13 SWINGLOADER	SUSPENSION SYSTEM
----------------------------	-------------------

ASSEMBLY NUMBER	DESCRIPTION
----- 1802423 -----	----- OSCILLATION LOCKOUT MANIFOLD BLOCK -----

ITEM NO.	PART NUMBER	DESCRIPTION	QTY. USED
<hr/>			
1	8703232	MANIFOLD BLOCK	1
2	8703233	SOLENOID VALVE	1
3	8703234	CHECK VALVE	1
<hr/>			

SWINGMASTER CORPORATION  
 11415 MELROSE AVENUE  
 FRANKLIN PARK, ILLINOIS 60131

TEL: (847) 451-1224