



SECTION V
SWING DRIVE SYSTEM

SWINGMASTER CORPORATION

PARTS BOOK

MACHINE

SECTION

V

MODEL 361 SWINGLOADER

SWING DRIVE SYSTEM

DESCRIPTION

SWING DRIVE INSTALLATION

 SWING DRIVE GEARBOX ASSEMBLY

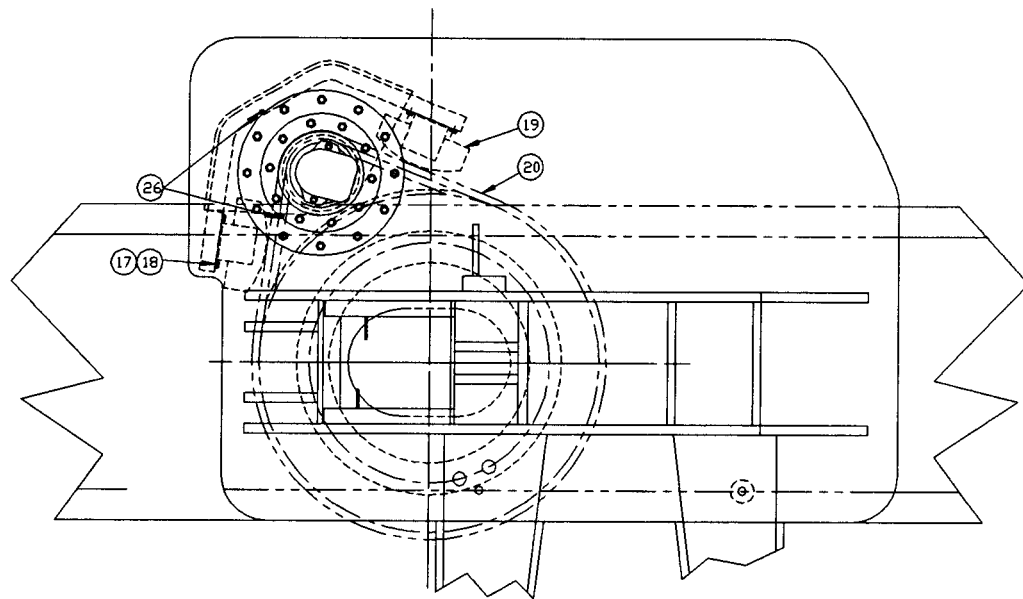
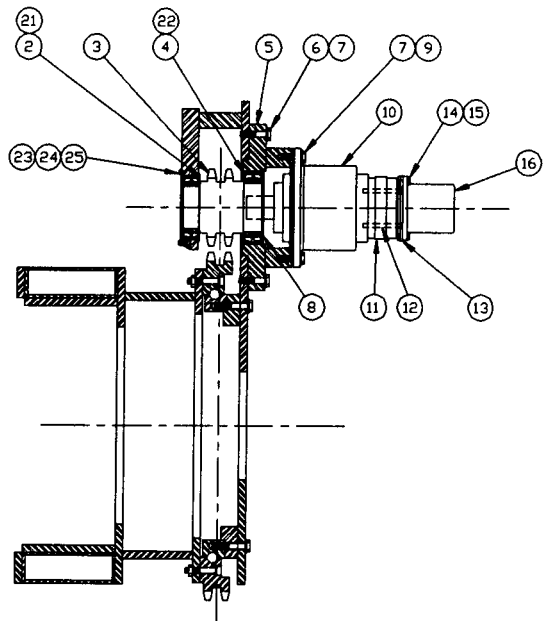
 SWING DRIVE BRAKE ASSEMBLY

 SWING DRIVE MOTOR ASSEMBLY

SWING DRIVE LINES AND FITTINGS

SWINGMASTER CORPORATION
11415 MELROSE AVENUE
FRANKLIN PARK, ILLINOIS 60131

TELEPHONE: (847) 451-1224



1 INSTALLATION

1	10-12-90
REV. NO.	DATE

TOLERANCES
 UNLESS OTHERWISE SPECIFIED
 FRACTIONS +/-
 3 PLACE DECIMALS +/-
 2 PLACE DECIMALS +/-
 1 PLACE DECIMALS +/-
 ANGLES
 SEE SWINGMASTER SPECIFICATION
 G-1 FOR TOLERANCES NOT SPECIFIED
 DIMENSIONS ARE IN INCHES
 DO NOT SCALE DRAWING
 SCALE:

SWINGMASTER CORPORATION
 11415 MELROSE AVENUE
 FRANKLIN PARK, ILLINOIS 60131
 SWING DRIVE INSTALLATION
 MODEL 361
 DRAWN BY: B.W. DRAWING NO.
 DATE: 9-17-88 D-190

MACHINE ----- SECTION ----- 22

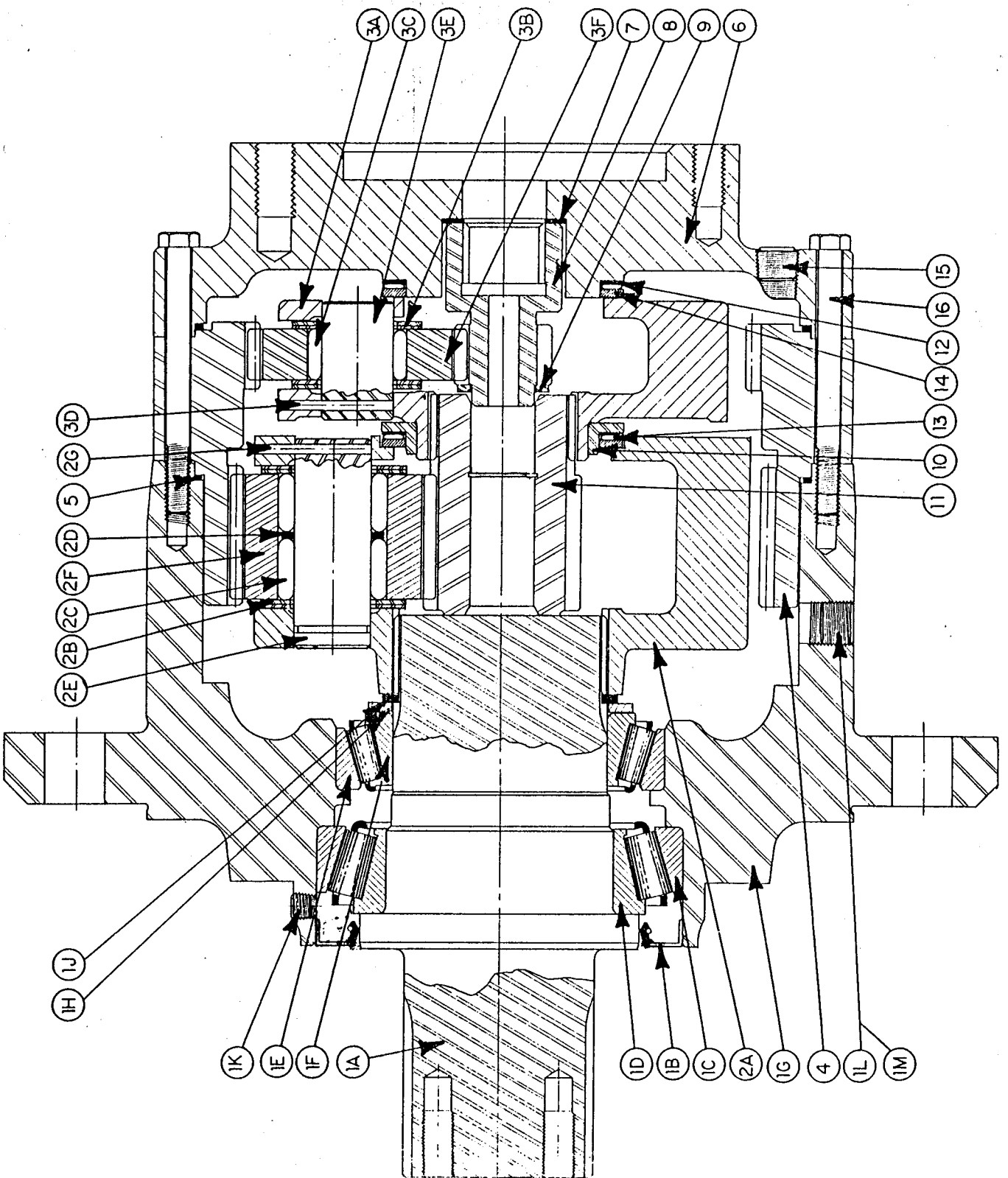
MODEL 361 SWINGLOADER SWING DRIVE SYSTEM

ASSEMBLY
NUMBER DESCRIPTION

1802047 SWING DRIVE INSTALLATION

ITEM NO.	PART NUMBER	DESCRIPTION	QTY. USED
2	1802048	BEARING - 5.50" I.D. X 00" WIDE	1.00
3	1802049	2. PINION GEAR	1.00
4	1802050	BEARING - 6.25" I.D. X 2.38" WIDE	1.00
5	1802051	GEARBOX MOUNTING BRACKET WELDMENT	1.00
6	1800494	H.H.C.S. 3/4-10 X 3 1/2" LONG	12.00
7	1800572	3/4" LOCK WASHER RETAINING	22.00
8	1802052	RING H.H.C.S. 3/4-10 X	1.00
9	1802053	GEARBOX 2 1/2" LONG	10.00
10	1802054	BRAKE	1.00
11	1802055	FLAT HEAD H.S.C.S.	1.00
12	1802056	ADAPTER FLANGE	4.00
13	1802057	H.H.C.S. 5/8-11 X 1/2-13 X 5 1/4" LONG	1.00
14	1802058	5/8" LOCK WASHER 1 1/2" LONG	2.00
15	1800022	HYDRAULIC MOTOR	2.00
16	1802059	H.H.C.S. 3/8-16 X	1.00
17	1801487	7/8" LONG 3/8"	4.00
18	1800568	LOCK WASHER	4.00
19	1802060	CHAIN TENSIONER	2.00
20	1802061	CHAIN - 2" PITCH	1.00
21	1804290	SEALING RING	1.00
22	1804291	SEALING RING	1.00
23	1802064	END PLATE	1.00
24	1800430	H.H.C.S. 1/4-20 X 1/2" LONG	6.00
25	1800567	1/4" LOCK WASHER	6.00
26	1800663	STRAIGHT 1/8" PIPE-M GREASE FITTING	2.00

CROSS-SECTIONAL VIEW

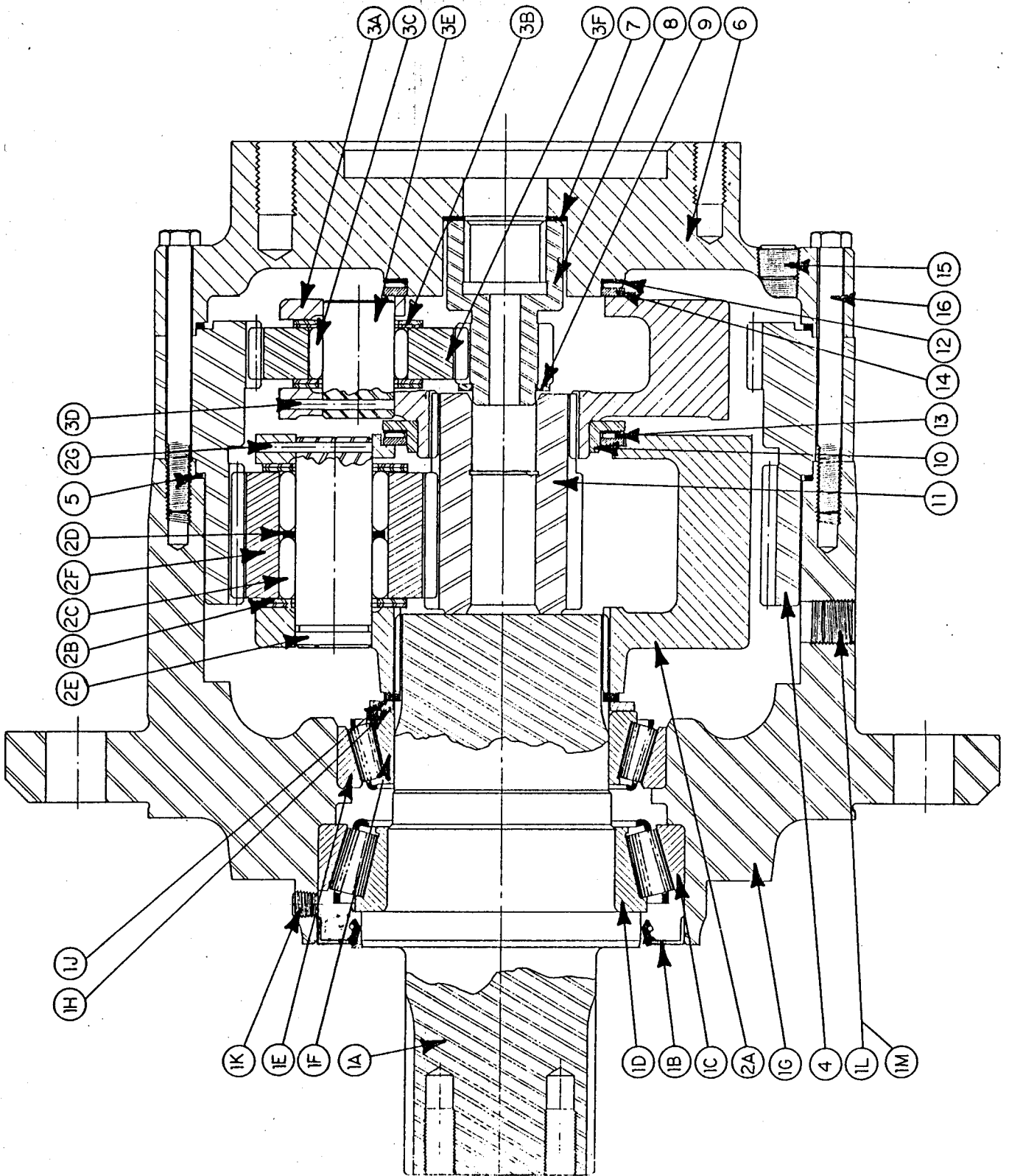


MACHINE	SECTION	22
-----	-----	-----
MODEL 361 SWINGLOADER	SWING DRIVE SYSTEM	
-----	-----	-----

ASSEMBLY	DESCRIPTION
NUMBER	-----
1802054	SWING DRIVE GEARBOX ASSEMBLY
-----	-----

ITEM	PART		QTY.
NO.	NUMBER	DESCRIPTION	USED
-----			-----
1	8702437	HUB SHAFT SUB-ASSEMBLY	1
1A	8702438	OUTPUT SHAFT	1
1B	8702439	SEAL	1
1C	8702440	BEARING CUP	1
1D	8702441	BEARING CONE	1
1E	8702442	BEARING CUP	1
1F	8702443	BEARING CONE	1
1G	8702444	HUB	1
1H	8702445	SPACER	1
1J	8702446	RETAINING RING	1
1K	8702447	PIPE PLUG	2
1L	8702448	PIPE PLUG	2
2	8702449	SECOND STAGE CARRIER SUB-ASSEMBLY	1
2A	8702450	SECOND STAGE CARRIER	1
2B	8702451	THRUST WASHER	12
2C	8702452	NEEDLE BEARING	108
2D	8702453	SPACER	3
2E	8702454	PLANET SHAFT	3
2F	8702455	PLANET GEAR	3
2G	8702456	DOWEL PIN	3
3	8702457	FIRST STAGE CARRIER SUB-ASSEMBLY	1
3A	8702458	FIRST STAGE CARRIER	1
3B	8702459	THRUST WASHER	12
3C	8702460	NEEDLE ROLLER	57
-----			-----

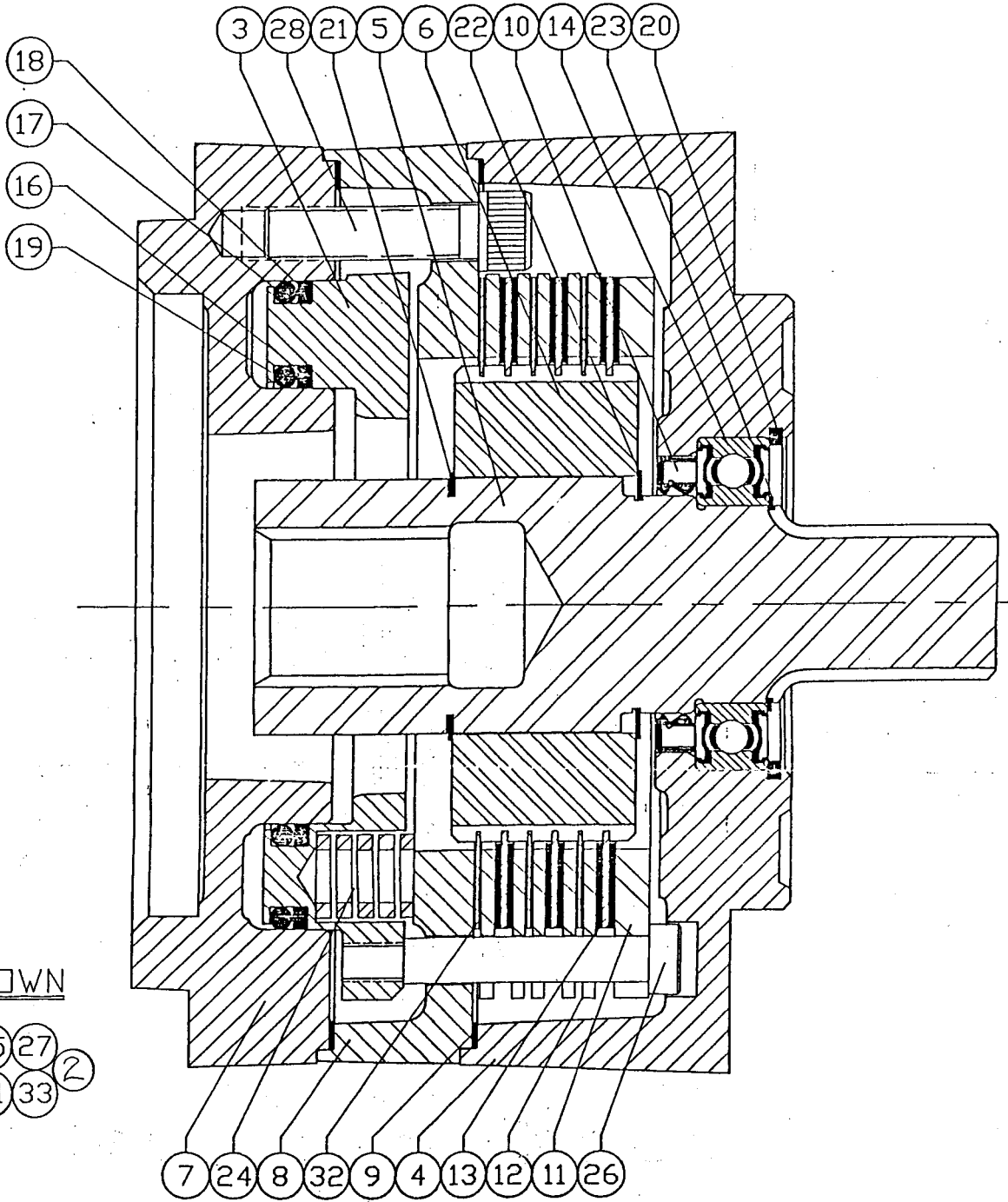
CROSS-SECTIONAL VIEW



MACHINE	SECTION	22
MODEL 361 SWINGLOADER	SWING DRIVE SYSTEM	

ASSEMBLY NUMBER	DESCRIPTION
1802054	SWING DRIVE GEARBOX ASSEMBLY

ITEM NO.	PART NUMBER	DESCRIPTION	QTY. USED
3D	8702461	DOWEL PIN	3
3E	8702462	PLANET SHAFT	3
3F	8702463	PLANET GEAR	3
4	8702464	RING GEAR	1
5	8702465	O-RING	2
6	8702466	COVER	1
7	8702467	THRUST WASHER	1
8	8702468	INPUT GEAR	1
9	8702469	THRUST WASHER	1
10	8702470	THRUST BEARING CARRIER	1
11	8702471	SECOND STAGE SUN	1
12	8702472	THRUST WASHER	2
13	8702473	THRUST BEARING	2
14	8702474	THRUST WASHER	2
16	8702475	BOLT	24
17	8702476	DRIVE SCREW	4
18	8702477	I.D. PLATE	1



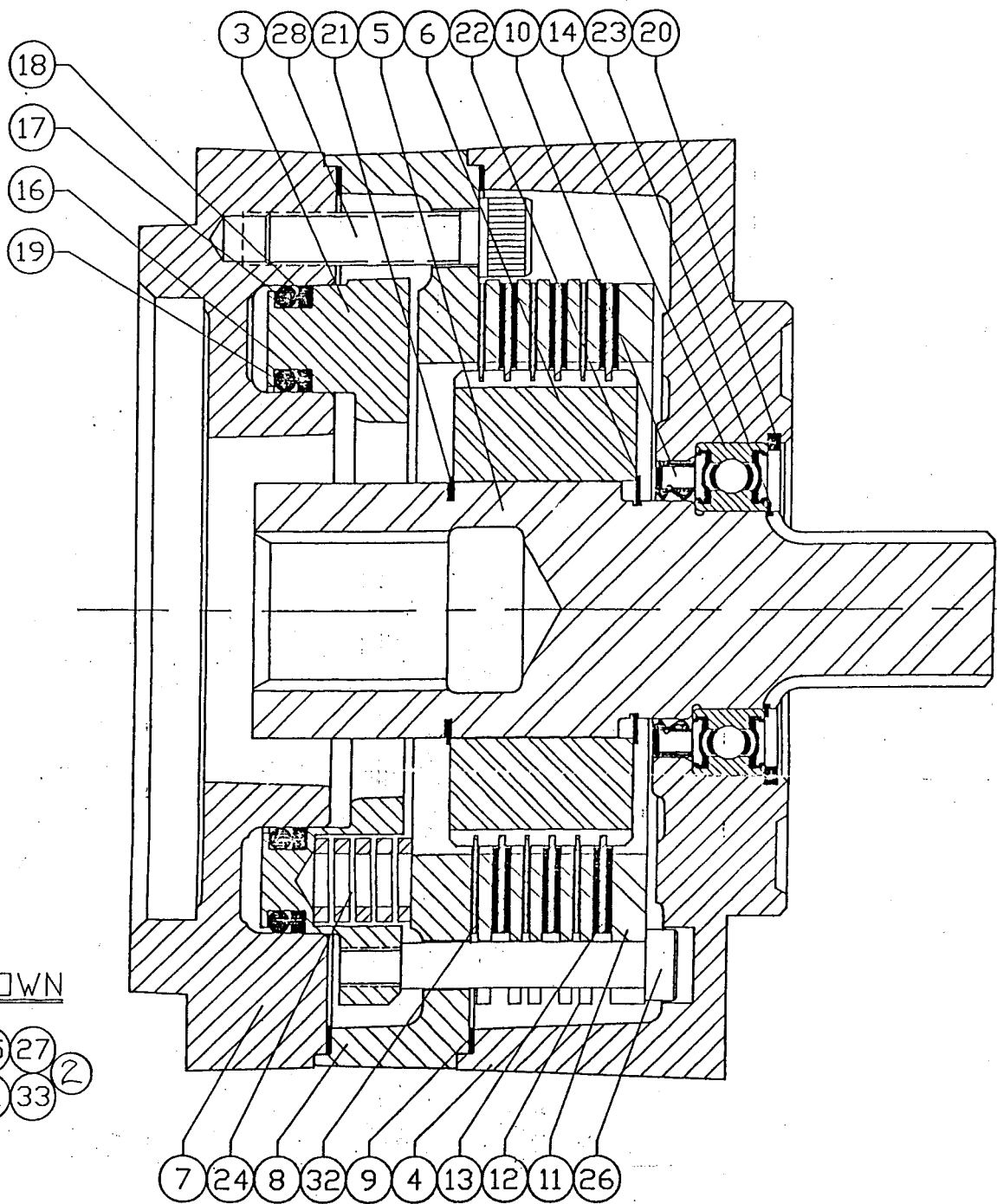
NOT SHOWN

- 1
- 15
- 25
- 27
- 2
- 29
- 30
- 31
- 33

MACHINE	SECTION	22
-----	-----	-----
MODEL 361 SWINGLOADER	SWING DRIVE SYSTEM	
-----	-----	-----

ASSEMBLY NUMBER	DESCRIPTION
-----	-----
1802055	SWING DRIVE BRAKE ASSEMBLY
-----	-----

ITEM NO.	PART NUMBER	DESCRIPTION	QTY. USED
-----			-----
1	8702330	SHIPPING PLUG	1
2	8702331	BLEEDER SCREW	1
3	8702332	PISTON REAR PORT	1
4	8702333	COVER PLATE REAR PORT	1
5	8702334	SHAFT REAR PORT	1
6	8702335	OUTER SPLINE RR PT	1
7	8702336	PRS PLATE REAR PORT	1
8	8702337	SPRING PLATE RR PT	1
9	8702338	CASE SEAL	2
10	8702339	OIL SEAL	1
11	8702340	PRIMARY	1
12	8702341	STATOR	5
13	8702342	ROTOR	3
14	8702343	CMT. BEARING	1
15	8702344	O-RING	2
16	8702345	BACK-UP RING	1
17	8702346	O-RING	1
18	8702347	BACK-UP RING	1
19	8702348	O-RING	1
20	8702349	CMT. SNAP RING	1
21	8702390	RETAINING RING	1
22	8702391	RETAINING RING	1
23	8702392	RETAINING RING	1
24	8702393	SPRING - RED	2

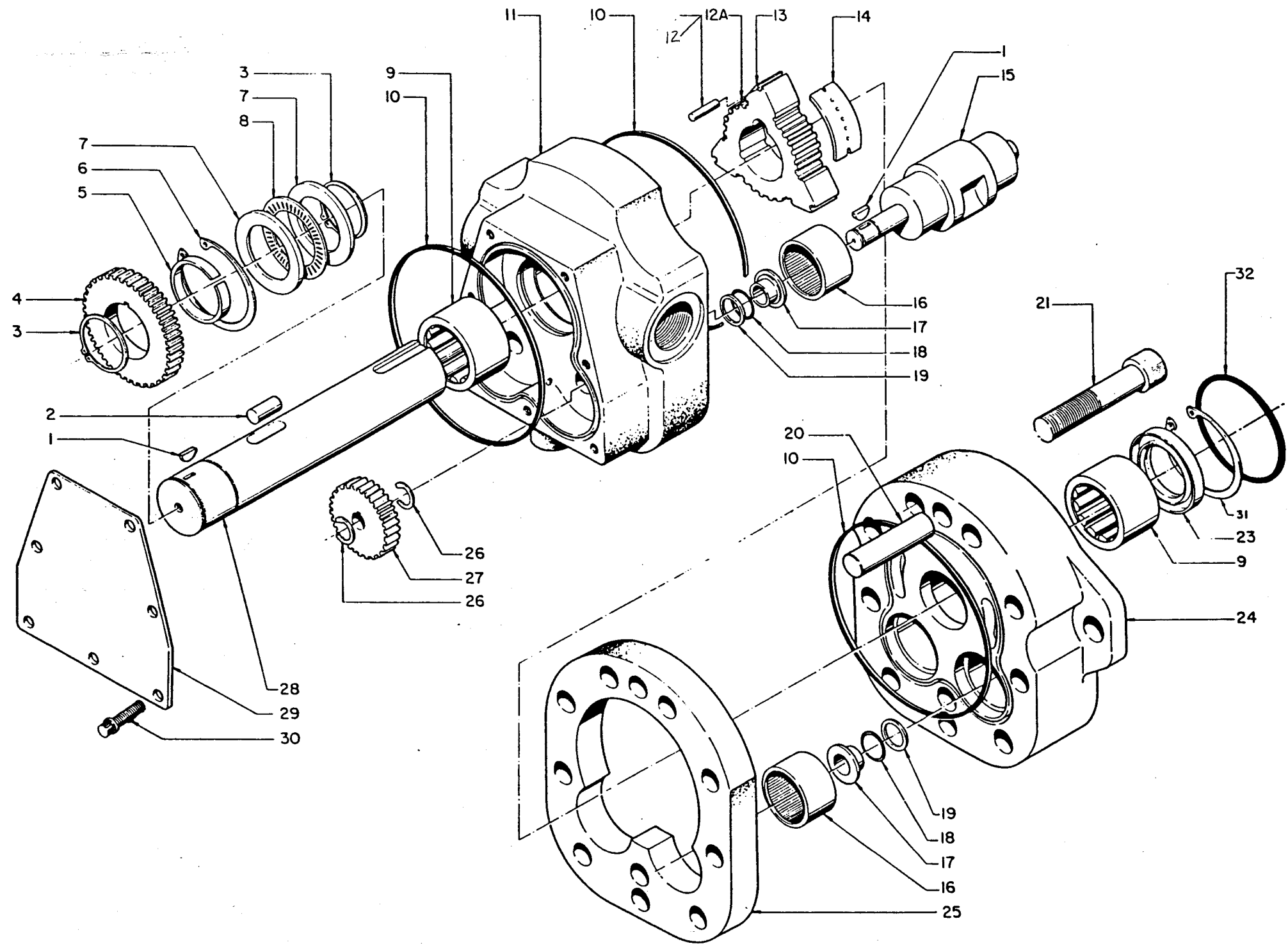


NOT SHOWN

MACHINE	SECTION	22
-----	-----	-----
MODEL 361 SWINGLOADER	SWING DRIVE SYSTEM	
-----	-----	-----

ASSEMBLY	-----
NUMBER	DESCRIPTION
-----	-----
1802055	SWING DRIVE BRAKE ASSEMBLY
-----	-----

ITEM NO.	PART NUMBER	DESCRIPTION	QTY. USED
25	8702394	LABEL - EXT.	1
26	8702395	S.H.S.B. 3/8-16 X 2" LONG	4
27	8702396	F.H.S.C.S. 3/8-16 X 2 1/2" LONG	2
28	8702397	S.H.C.S. 7/16-14 X 1 3/4" LONG	2
29	8702398	CMT. BOX	1
30	8702399	CMT. STUFFERS	1
31	8702400	5" DIA. CIRCLE	1
32	8702401	ROTOR	3
33	8702402	SPRING - BLUE	2



MACHINE

SECTION

22

MODEL 361 SWINGLOADER

SWING DRIVE SYSTEM

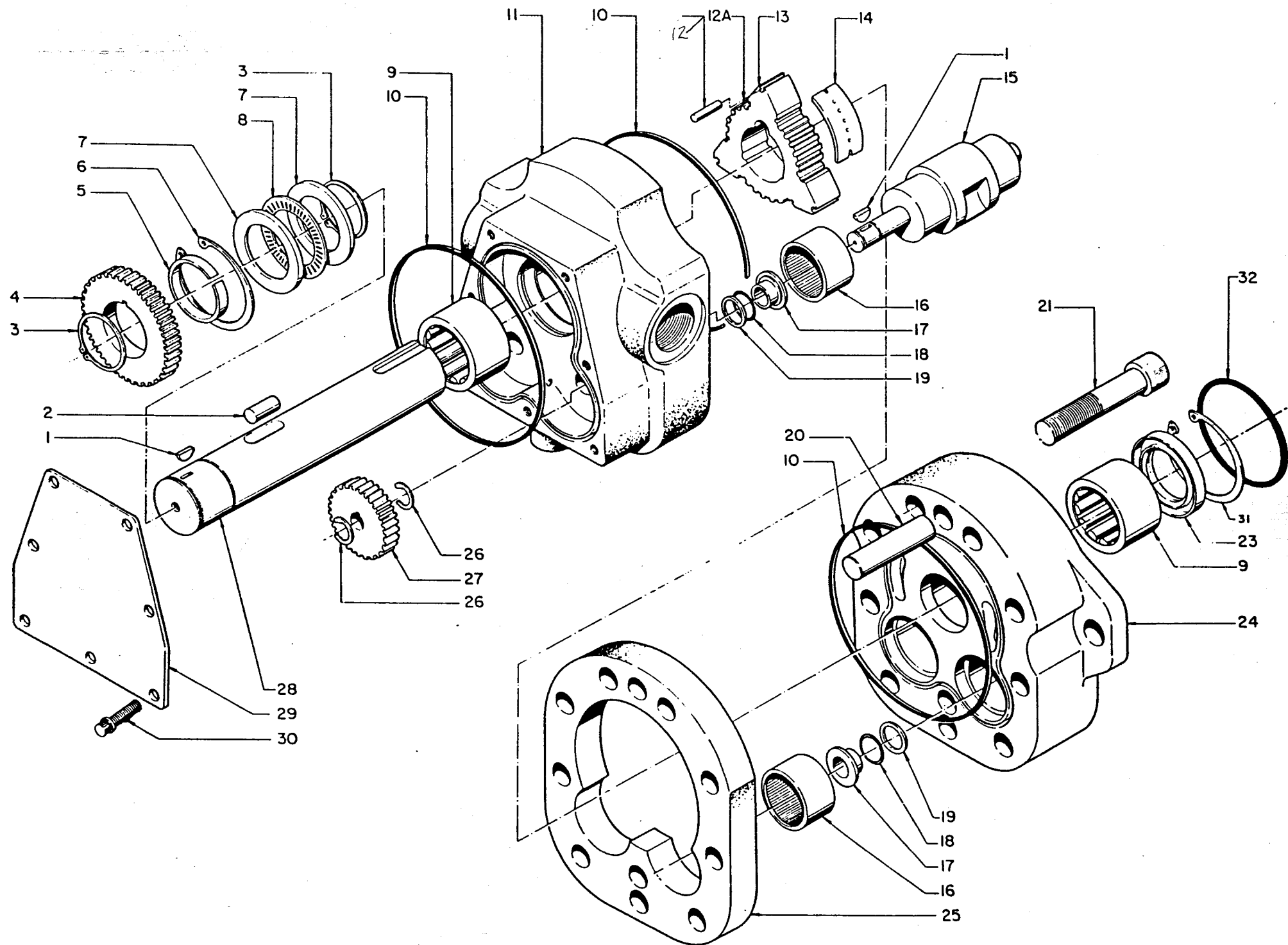
ASSEMBLY
NUMBER

DESCRIPTION

1802059

SWING DRIVE MOTOR ASSEMBLY

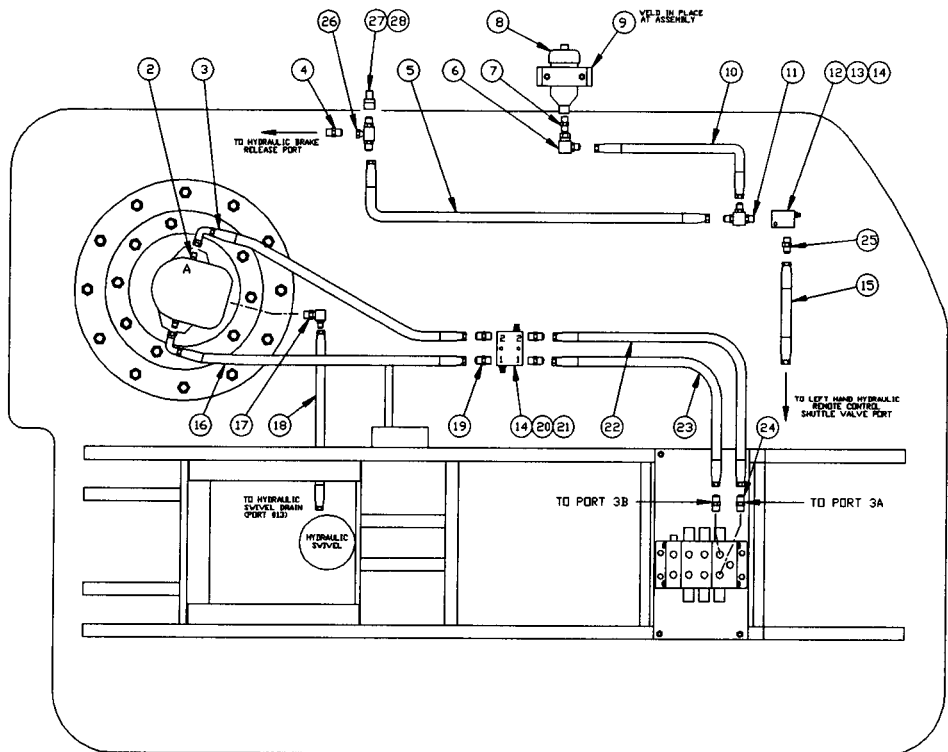
ITEM NO.	PART NUMBER	DESCRIPTION	QTY. USED
1	8702403	WOODDRUFF KEY	3
2	8702404	DRIVE PIN	1
3	8702405	RETAINING RING	2
4	8702406	DRIVE GEAR	1
5	8702407	SPACER WASHER	1
6	8702408	RETAINING RING	1
7	8702409	BEARING RACE	2
8	8702410	THRUST BEARING	1
9	8702411	ROLLER BEARING	2
10	8702412	OIL SEAL	3
11	8702413	REAR END CAP	1
12	8702414	TIP SEAL ROLLER	3
12A	8702415	BODY SEAL ROLLER	18
13	8702416	ROTOR	1
14	8702417	SEAL PLATE	3
15	8702418	ABUTMENT VALVE	2
16	8702419	NEEDLE BEARING	4
17	8702420	STEP BEARING	4
18	8702421	O-RING	4
19	8702422	BACK-UP RING	4
20	8702423	DOWEL PIN	2
21	8702424	CAP SCREW	9
23	8702425	SHAFT SEAL	1
24	8702426	FRONT END CAP	1



MACHINE	SECTION	22
-----	-----	-----
MODEL 361 SWINGLOADER	SWING DRIVE SYSTEM	
-----	-----	-----

ASSEMBLY NUMBER	DESCRIPTION
-----	-----
1802059	SWING DRIVE MOTOR ASSEMBLY
-----	-----

ITEM NO.	PART NUMBER	DESCRIPTION	QTY. USED
-----	-----	-----	-----
25	8702427	DISPLACEMENT HOUSING	1
26	8702428	RETAINING RING	4
27	8702429	PINION GEAR	2
28	8702430	S-14 TOOTH SPLINED SHAFT	1
29	8702431	GEAR COVER	1
30	8702432	CAP SCREW	1
31	8702433	RETAINING RING	1
32	8702434	O-RING	1
33	8702435	FRONT SEALING CAP - (NOT SHOWN)	1
	8702436	SEAL KIT - INCLUDES ITEMS 10,18,23,31	1
-----	-----	-----	-----



1 INSTALLATION

TOLERANCES		SWINGMASTER CORPORATION	
UNLESS OTHERWISE SPECIFIED		11415 MELROSE AVENUE	
FRACTIONS +/-		FRANKLIN PARK, ILLINOIS 60131	
3 PLACE DECIMALS +/-		SWING DRIVE LINES & FITTINGS	
2 PLACE DECIMALS +/-			
1 PLACE DECIMALS +/-			
ANGLES			
SEE SWINGMASTER SPECIFICATION		MODEL 361	
G-1 FOR TOLERANCES NOT SPECIFIED		DRAWN BY: B.M.	
DIMENSIONS ARE IN INCHES		DATE: 2-3-89	
DO NOT SCALE DRAWING		DRAWING NO. D-241	

MACHINE SECTION 22

 MODEL 361 SWINGLOADER SWING DRIVE SYSTEM

ASSEMBLY
 NUMBER DESCRIPTION

 1802244 SWING DRIVE LINES AND FITTINGS

ITEM NO.	PART NUMBER	DESCRIPTION	QTY. USED
2	1801831	STRAIGHT MALE 1 0-RING TO 5/8 TUBE	2
3	1802395	HOSE ASSEMBLY 2781-10	1
4	1802245	STRAIGHT MALE 1/4 0-RING TO 3/8 TUBE	1
5	1801358	HOSE ASSEMBLY 1503-6	1
6	1800852	90 DEG TUBE ELBOW 3/8 M TO 3/8 F SWIVEL	1
7	1800764	STRAIGHT MALE 1/2 0-RING TO 3/8 TUBE	1
8	1802256	ACCUMULATOR	1
9	1802257	HOSE CLAMP - 2 3/4"	1
10	1802251	HOSE ASSEMBLY 1503-6	1
11	1800881	MALE TEE 3/8 TUBE-3/8 TUBE-3/8 0-RING	2
12	1802255	FLOW CONTROL VALVE-INCLUDES ITEMS 12a+b	1
12a	8702886	CARTRIDGE - NOT SHOWN IN PICTURE	1
12b	8702887	VALVE BODY - NOT SHOWN IN PICTURE	1
13	1800446	H.H.C.S. 5/16-18 X 1 3/4" LONG	1
14	1800074	5/16" LOCK WASHER	3
15	1802252	HOSE ASSEMBLY 1503-6	1
16	1802247	HOSE ASSEMBLY 2781-10	1
17	1800796	90 DEG MALE ELBOW 1/2 0-RING TO 1/2 TUBE	1
18	1801198	HOSE ASSEMBLY 1503-8	1
19	1801598	STRAIGHT MALE 5/8 0-RING TO 5/8 TUBE	4
20	1802254	CROSSOVER RELIEF VALVE-INCLUDES 20a+b	1
20a	8702888	CARTRIDGE - NOT SHOWN IN PICTURE	1
20b	8702889	VALVE BODY - NOT SHOWN IN PICTURE	1
21	1800447	H.H.C.S. 5/16-18 X 2" LONG	2
22	1802248	HOSE ASSEMBLY 2781-10	1
23	1802249	HOSE ASSEMBLY 2781-10	1
24	1800766	STRAIGHT MALE 1/2 0-RING TO 5/8 TUBE	2
25	1800762	STRAIGHT MALE 3/8 0-RING TO 3/8 TUBE	1
26	1800882	3/8 TUBE BRANCH TEE M-M-F SWIVEL	1
27	1801668	PRESSURE SENSING COUPLING - 3/8 TUBE	1
28	1800876	FD90 DUST CAP	1

SWINGMASTER CORPORATION
 11415 MELROSE AVENUE
 FRANKLIN PARK, ILLINOIS 60131

TELEPHONE: (847) 451-1224