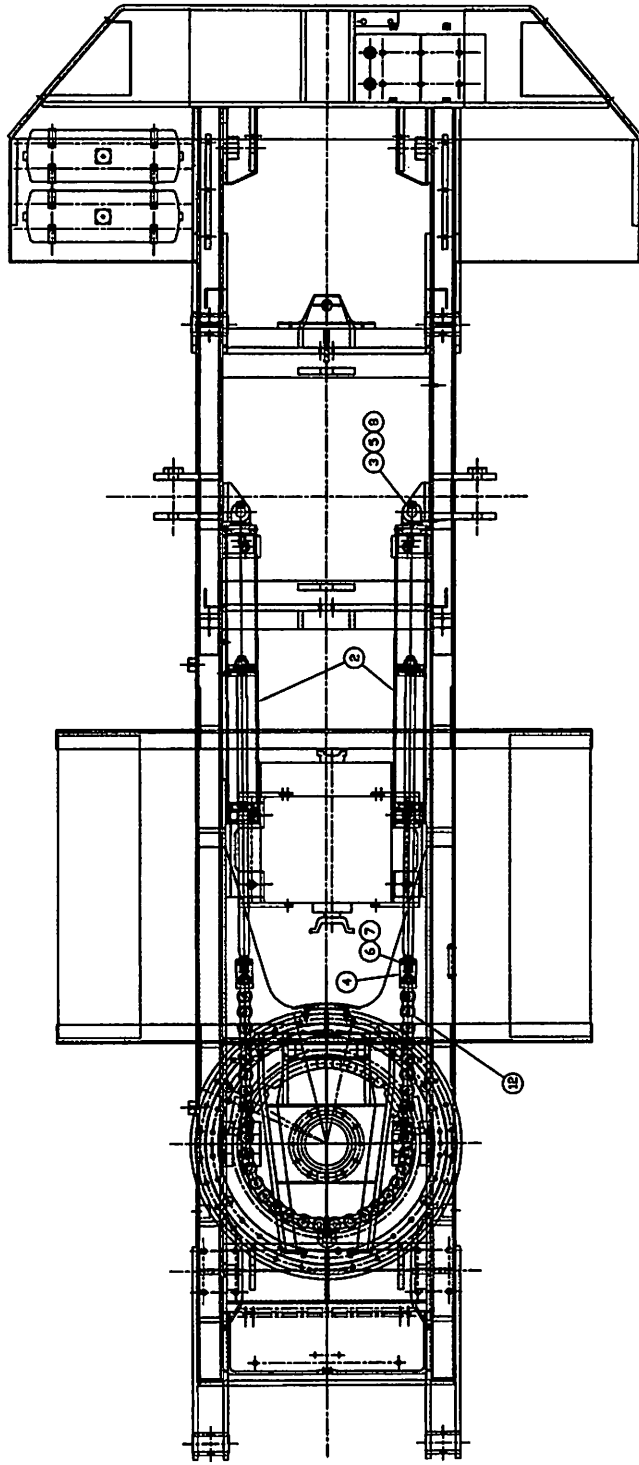


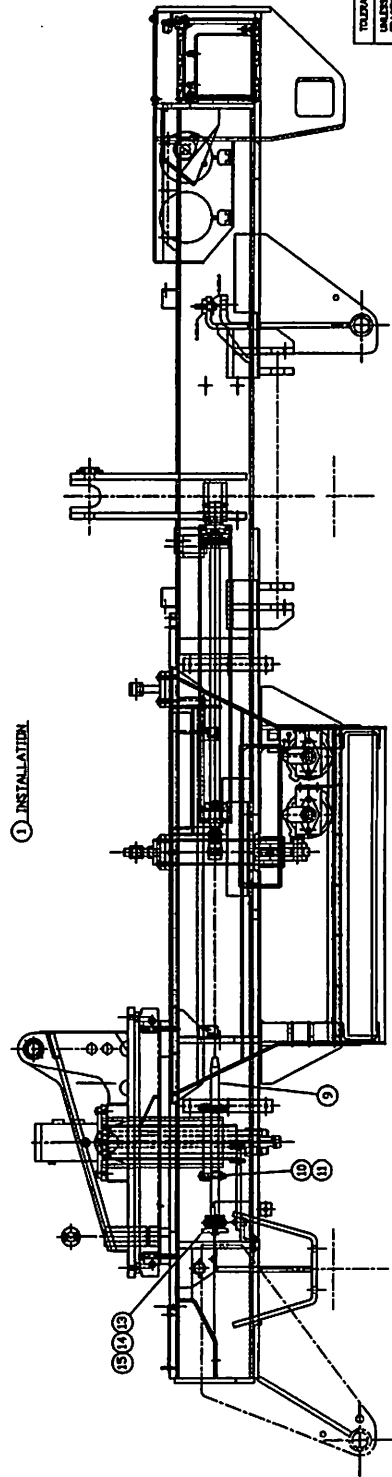


SECTION V

SWING
DRIVE
SYSTEM



① INSTALLATION



| | | |
|---|---|--|
| TOLERANCES UNLESS OTHERWISE SPECIFIED FINISHES 1 PLYS UNLESS INDICATED 2 PLYS UNLESS INDICATED 3 PLYS UNLESS INDICATED 4 PLYS UNLESS INDICATED 5 PLYS UNLESS INDICATED 6 PLYS UNLESS INDICATED 7 PLYS UNLESS INDICATED 8 PLYS UNLESS INDICATED 9 PLYS UNLESS INDICATED 10 PLYS UNLESS INDICATED 11 PLYS UNLESS INDICATED 12 PLYS UNLESS INDICATED 13 PLYS UNLESS INDICATED 14 PLYS UNLESS INDICATED 15 PLYS UNLESS INDICATED 16 PLYS UNLESS INDICATED 17 PLYS UNLESS INDICATED 18 PLYS UNLESS INDICATED 19 PLYS UNLESS INDICATED 20 PLYS UNLESS INDICATED 21 PLYS UNLESS INDICATED 22 PLYS UNLESS INDICATED 23 PLYS UNLESS INDICATED 24 PLYS UNLESS INDICATED 25 PLYS UNLESS INDICATED 26 PLYS UNLESS INDICATED 27 PLYS UNLESS INDICATED 28 PLYS UNLESS INDICATED 29 PLYS UNLESS INDICATED 30 PLYS UNLESS INDICATED 31 PLYS UNLESS INDICATED 32 PLYS UNLESS INDICATED 33 PLYS UNLESS INDICATED 34 PLYS UNLESS INDICATED 35 PLYS UNLESS INDICATED 36 PLYS UNLESS INDICATED 37 PLYS UNLESS INDICATED 38 PLYS UNLESS INDICATED 39 PLYS UNLESS INDICATED 40 PLYS UNLESS INDICATED 41 PLYS UNLESS INDICATED 42 PLYS UNLESS INDICATED 43 PLYS UNLESS INDICATED 44 PLYS UNLESS INDICATED 45 PLYS UNLESS INDICATED 46 PLYS UNLESS INDICATED 47 PLYS UNLESS INDICATED 48 PLYS UNLESS INDICATED 49 PLYS UNLESS INDICATED 50 PLYS UNLESS INDICATED 51 PLYS UNLESS INDICATED 52 PLYS UNLESS INDICATED 53 PLYS UNLESS INDICATED 54 PLYS UNLESS INDICATED 55 PLYS UNLESS INDICATED 56 PLYS UNLESS INDICATED 57 PLYS UNLESS INDICATED 58 PLYS UNLESS INDICATED 59 PLYS UNLESS INDICATED 60 PLYS UNLESS INDICATED 61 PLYS UNLESS INDICATED 62 PLYS UNLESS INDICATED 63 PLYS UNLESS INDICATED 64 PLYS UNLESS INDICATED 65 PLYS UNLESS INDICATED 66 PLYS UNLESS INDICATED 67 PLYS UNLESS INDICATED 68 PLYS UNLESS INDICATED 69 PLYS UNLESS INDICATED 70 PLYS UNLESS INDICATED 71 PLYS UNLESS INDICATED 72 PLYS UNLESS INDICATED 73 PLYS UNLESS INDICATED 74 PLYS UNLESS INDICATED 75 PLYS UNLESS INDICATED 76 PLYS UNLESS INDICATED 77 PLYS UNLESS INDICATED 78 PLYS UNLESS INDICATED 79 PLYS UNLESS INDICATED 80 PLYS UNLESS INDICATED 81 PLYS UNLESS INDICATED 82 PLYS UNLESS INDICATED 83 PLYS UNLESS INDICATED 84 PLYS UNLESS INDICATED 85 PLYS UNLESS INDICATED 86 PLYS UNLESS INDICATED 87 PLYS UNLESS INDICATED 88 PLYS UNLESS INDICATED 89 PLYS UNLESS INDICATED 90 PLYS UNLESS INDICATED 91 PLYS UNLESS INDICATED 92 PLYS UNLESS INDICATED 93 PLYS UNLESS INDICATED 94 PLYS UNLESS INDICATED 95 PLYS UNLESS INDICATED 96 PLYS UNLESS INDICATED 97 PLYS UNLESS INDICATED 98 PLYS UNLESS INDICATED 99 PLYS UNLESS INDICATED 100 PLYS UNLESS INDICATED | | SWINGMASTER CORPORATION 11455 MADISON AVENUE FRANKLIN PARK, ILLINOIS 60131 SWING DRIVE INSTALLATION |
| SET DIMENSIONS SPECIFICATION DIMENSIONS ARE IN INCHES UNLESS OTHERWISE SPECIFIED SCALE: 1/10 | FOR MODEL 181TCD DRAWN BY: J.K. DATE: 11-17-68 DRAWING NO. D1-68 | |

MACHINE

SECTION

1

MODEL SL180-13 SWINGLOADER

SWING DRIVE SYSTEM

| ASSEMBLY NUMBER | DESCRIPTION |
|--------------------|--------------------------|
| 1806866 | SWING DRIVE INSTALLATION |

| ITEM NO. | PART NUMBER | DESCRIPTION | QTY USED |
|-------------|----------------|-------------------------------------|-------------|
| 2 | 1806867 | SWING CYLINDER | 2 |
| 3 | 1800806 | 1 1/2" DIAMETER PIN WELDMENT | 2 |
| 4 | 1800809 | CONNECTOR ASSEMBLY | 2 |
| 5 | 1800451 | H.H.C.S. 3/8-16 X 3/4" LONG | 2 |
| 6 | 1800811 | ALLEN SET SCREW 1/2-13 X 1/2 LG | 4 |
| 7 | 1800807 | 3/8" DIAMETER 1/8" THICK BRASS DISC | 4 |
| 8 | 1800568 | 3/8" LOCK WASHER | 2 |
| 9 | 1806868 | SPROCKET | 1 |
| 10 | 1806357 | H.H.C.S. 3/4-16 x 4" LONG | 12 |
| 11 | 1800534 | ESNA HEX NUT 3/4-16 | 12 |
| 12 | 1806869 | ROLLER CHAIN | 1 |
| 13 | 1800356 | STEEL BAR W/HOLE | 1 |
| 14 | 1800476 | H.H.C.S. 5/8-11 X 2" LONG | 1 |
| 15 | 1800357 | HEADLOCK PLATE | 1 |

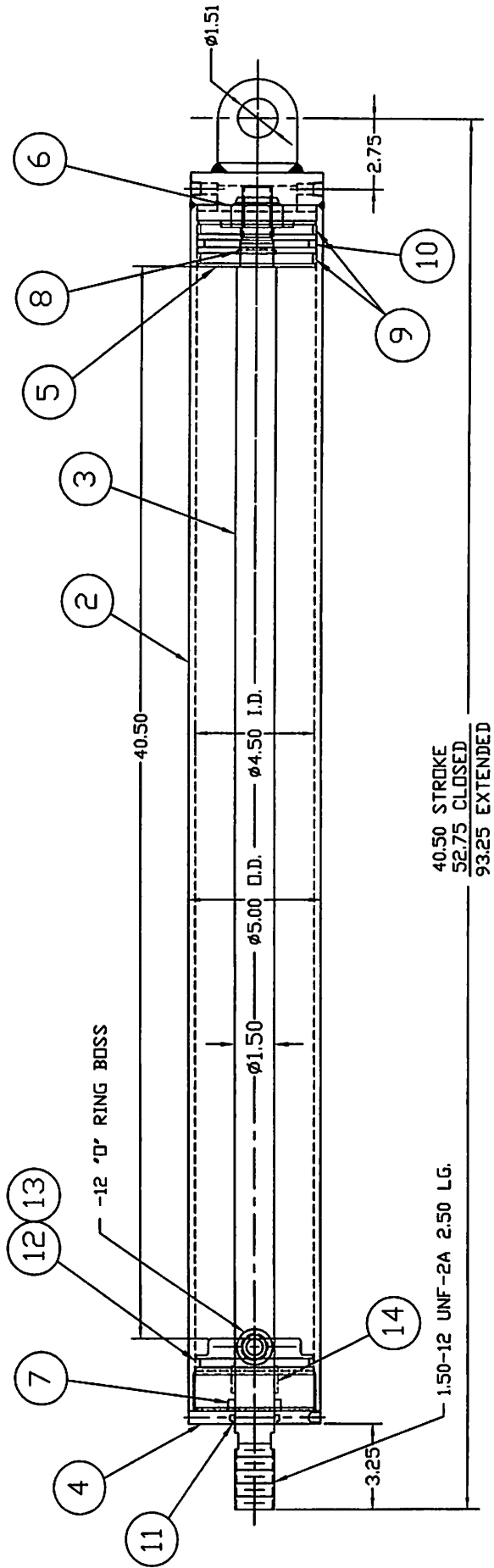
SWINGMASTER CORPORATION

11415 MELROSE AVENUE

FRANKLIN PARK, ILLINOIS 60131

TEL: (847) 451-1224

CYLINDER OPERATING PRESSURE : 2050 PSI.
 OVERLOAD RELIEF PRESSURE: 3000 PSI



| | | |
|---|--|--|
| TOLERANCES DIMENSIONS UNLESS SPECIFIED 3 PLACE DECIMALS \pm / 2 PLACE DECIMALS \pm / 1 PLACE DECIMALS \pm / ANGLES | | SWINGMASTER CORPORATION 11415 MADISON AVENUE FRANKLIN PARK, ILLINOIS 60151 SWING CYLINDER |
| SEE SWINGMASTER SPECIFICATION 6-1 FOR TOLERANCES NOT SPECIFIED DIMENSIONS ARE IN INCHES UNLESS OTHERWISE SPECIFIED SCALE: 1/1 | | FOR MODEL IDENTIFICATION DRAWN BY: J.K. DATE: 05-05-08 DRAWING NO. D1-61 |

MACHINE

SECTION

1

MODEL SL180-13 SWINGLOADER

SWING DRIVE SYSTEM

ASSEMBLY
NUMBER

DESCRIPTION

1806871 SWING CYLINDER

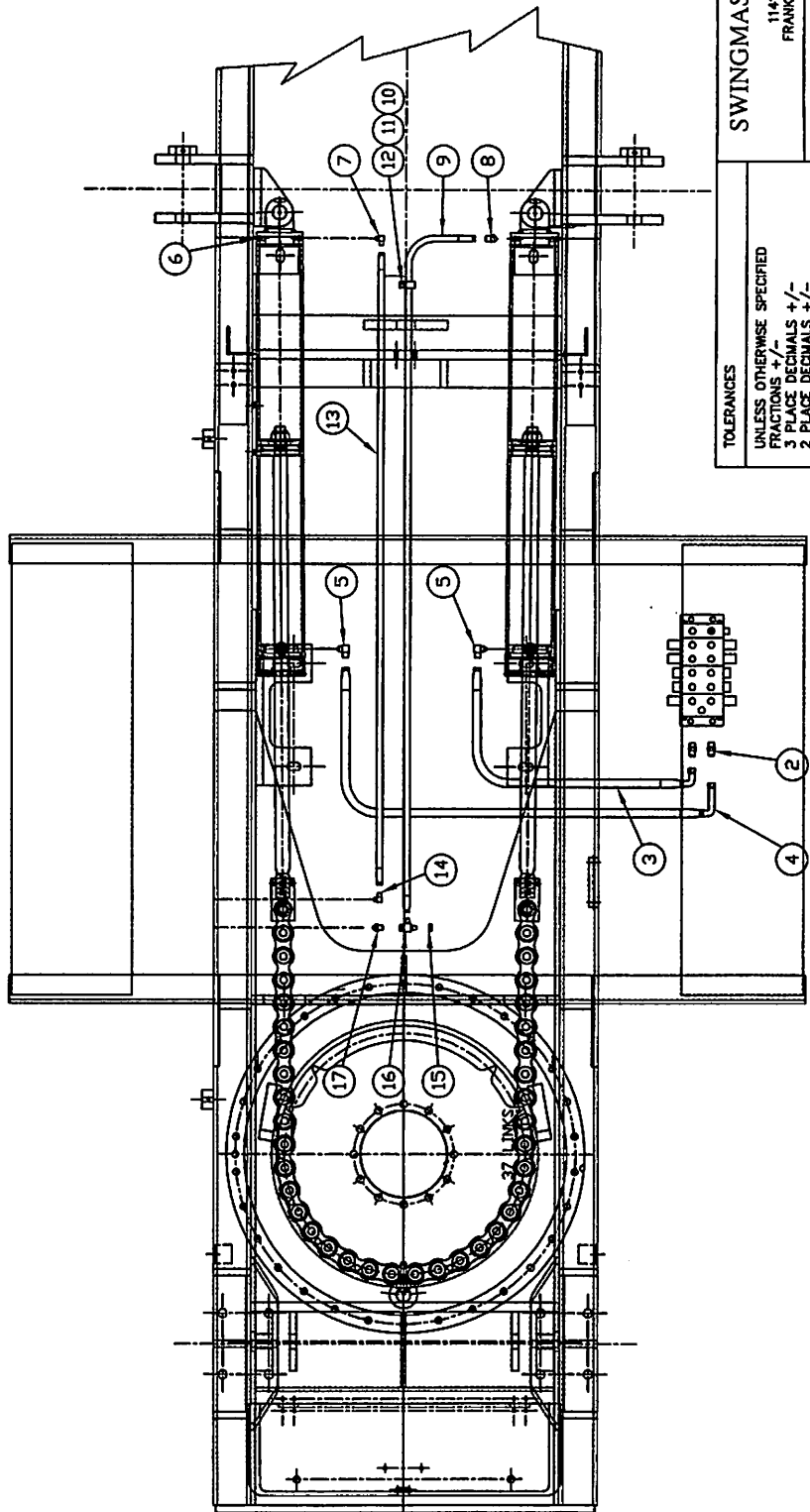
| ITEM NO. | PART NUMBER | DESCRIPTION | QTY USED |
|-------------|----------------|---------------|-------------|
| | | | 1 |
| 002 | 1806872 | CASE WELDMENT | 1 |
| 003 | 1806873 | ROD | 1 |
| 004 | 1806637 | CAP | 1 |
| 005 | 1806638 | PISTON | 1 |
| 006 | 1806640 | LOCK NUT | 1 |
| 007 | 1806341 | ROD SEAL | 1 |
| 008 | 1806617 | "O" RINGG | 1 |
| 009 | 1806461 | WEAR RING | 2 |
| 010 | 1806462 | PISTON SEAL | 1 |
| 011 | 1806345 | WIPER | 1 |
| 012 | 1806465 | O-RING | 1 |
| 013 | 1806466 | BACKUP RING | 1 |
| 014 | 1806349 | WEAR RING | 2 |

SWINGMASTER CORPORATION

11415 MELROSE AVENUE

FRANKLIN PARK, ILLINOIS 60131

TEL: (847) 451-1224



1 LINES AND FITTINGS INSTALLATION

TOLERANCES
 UNLESS OTHERWISE SPECIFIED
 FRACTIONS
 3 PLACE DECIMALS +/-
 2 PLACE DECIMALS +/-
 1 PLACE DECIMALS +/-
 ANGLES

SEE SWINGMASTER SPECIFICATION
 G-1 FOR TOLERANCES NOT SPECIFIED
 DIMENSIONS ARE IN INCHES
 DO NOT SCALE DRAWING
 SCALE: NONE

SWINGMASTER CORPORATION
 11415 MELROSE AVENUE
 FRANKLIN PARK, ILL. 60131
 SWING CYLINDER LINES AND FITTINGS

FOR MODEL 181TCHD

DRAWN BY: J.K.

DATE: 11-19-08

DRAWING NO.

C1-51

MACHINE

SECTION

1

MODEL SL180-13 SWINGLOADER

SWING DRIVE SYSTEM

ASSEMBLY
NUMBER

DESCRIPTION

1806874 SWING CYLINDER LINES AND FITTINGS

| ITEM NO. | PART NUMBER | DESCRIPTION | QTY USED |
|----------|-------------|--|----------|
| 2 | 1800765 | STRAIGHT MALE 1/2 O-RING TO 1/2 TUBE | 2 |
| 3 | 1801330 | HOSE ASSEMBLY 2781-8 | 1 |
| 4 | 1804654 | HOSE ASSEMBLY 2781-8 | 1 |
| 5 | 1800786 | 90 DEG MALE ELBOW 3/4 PIPE TO 1/2 TUBE | 2 |
| 6 | 1800654 | 1/4" PIPE PLUG-SOCKET HEAD | 2 |
| 7 | 1800777 | 90 DEG MALE ELBOW 1/4 PIPE TO 1/4 TUBE | 1 |
| 8 | 1800751 | STRAIGHT MALE 1/4 PIPE TO 1/4 TUBE | 1 |
| 9 | 1804655 | HOSE ASSEMBLY 1503-4 | 1 |
| 10 | 1800739 | 1/2" DIAMETER CLAMP | 1 |
| 11 | 1800452 | H.H.C.S. 3/8-16 X 1" LONG | 1 |
| 12 | 1800514 | HEX NUT 3/8-16 | 1 |
| 13 | 1801333 | HOSE ASSEMBLY 1503-4 | 1 |
| 14 | 1800783 | 90 DEG MALE ELBOW 1/2 PIPE TO 1/4 TUBE | 1 |
| 15 | 1800884 | 1/4" TUBE CAP NUT | 1 |
| 16 | 1801597 | 1/4 TUBE RUN TEE M - F SWIVEL - M | 1 |
| 17 | 1804330 | MALE CONNECTOR 1/2 PIPE TO 1/4 TUBE | 1 |

SWINGMASTER CORPORATION

11415 MELROSE AVENUE

FRANKLIN PARK, ILLINOIS 60131

TEL: (847) 451-1224