



SECTION U
TURNTABLE

SWINGMASTER CORPORATION

PARTS BOOK

MACHINE

SECTION

21

MODEL 361 SWINGLOADER

TURNTABLE

ASSEMBLY
NUMBER

DESCRIPTION

1802199

TURNTABLE LOCK-PIN INSTALLATION

ITEM PART

QTY.

NO. NUMBER DESCRIPTION

USED

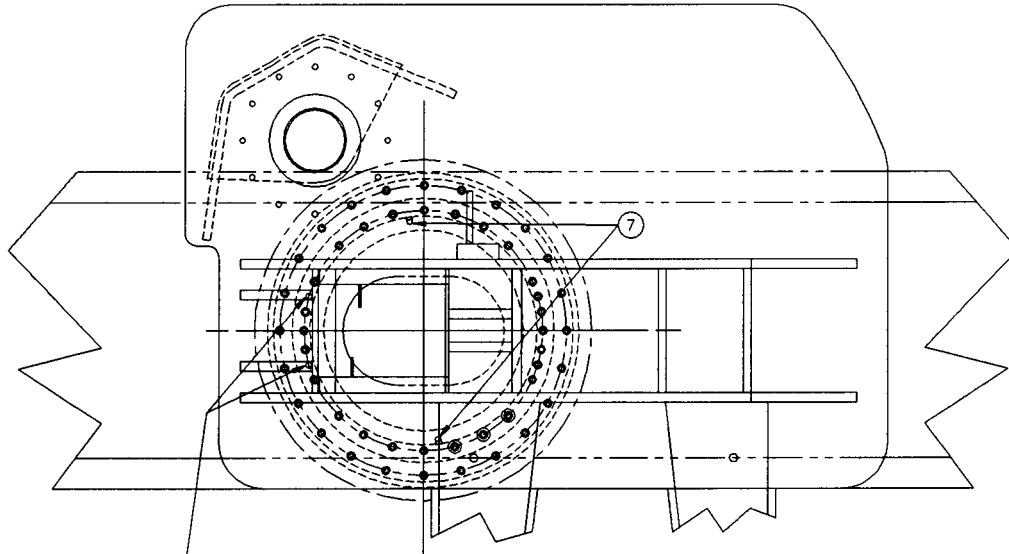
2	1802200	SWING LOCK HANDLE	1.00
3	1802432	SWING LOCK TUBE	1.00
4	1800514	HEX NUT 3/8-16	1.00
5	1802202	LOCK PIN - 1.50" DIA. X 9" LONG	1.00

SWINGMASTER CORPORATION

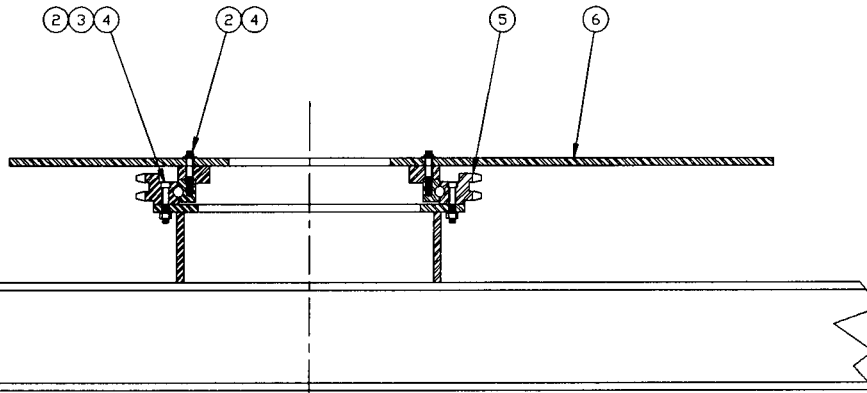
11415 MELROSE AVENUE

FRANKLIN PARK, ILLINOIS 60131

TELEPHONE: (847) 451-1224



NOTE: THESE TWO HOLES ARE NOT USED.



← FRONT OF MACHINE

1 INSTALLATION

NOTE: LUBRICATE AND TORQUE ALL BOLTS
TO 159 - 175 FT-LBS.

TOLERANCES		SWINGMASTER CORPORATION	
UNLESS OTHERWISE SPECIFIED		11415 MELROSE AVENUE	
FRACTIONS +/-		FRANKLIN PARK, ILLINOIS 60131	
3 PLACE DECIMALS +/-		TURNTABLE AND SWING BEARING INSTALLATION	
2 PLACE DECIMALS +/-		MODEL 351	
1 PLACE DECIMALS +/-		DRAWN BY: B.V.	
ANGLES		DRAWING NO.	
SEE SWINGMASTER SPECIFICATION		DATE: 9-22-88	
Q-1 FOR TOLERANCES NOT SPECIFIED		D-198	
DIMENSIONS ARE IN INCHES			
DO NOT SCALE DRAWING			
SCALE:			

SWINGMASTER CORPORATION

PARTS BOOK

MACHINE SECTION 21

MODEL 361 SWINGLOADER TURNTABLE

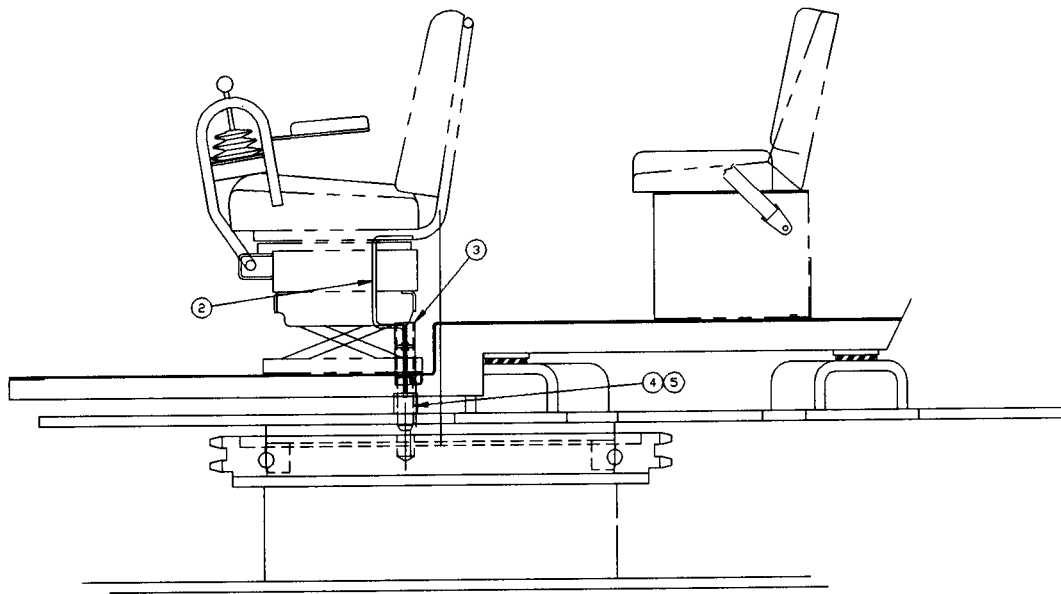
ASSEMBLY
NUMBER DESCRIPTION

1802079 TURNTABLE AND SWING BEARING INSTALLATION

ITEM PART			QTY.
NO. NUMBER DESCRIPTION			USED
2	1802080	12 POINT F.C.S. 3/4-10 X 4 1/2" LONG	50.00
3	1800520	HEAVY HEX NUT 3/4-10	24.00
4	1800558	3/4" FLAT WASHER	50.00
5	1802081	TURNTABLE BEARING	1.00
6	1802082	TURNTABLE WELDMENT	1.00
7	1800662	90 DEG 1/8" PIPE-M GREASE FITTING	2.00

SWINGMASTER CORPORATION
11415 MELROSE AVENUE
FRANKLIN PARK, ILLINOIS 60131

TELEPHONE: (847) 451-1224



① INSTALLATION

<p>TOLERANCES</p> <p>UNLESS OTHERWISE SPECIFIED</p> <p>FRACTIONS +/-</p> <p>3 PLACE DECIMALS +/-</p> <p>2 PLACE DECIMALS +/-</p> <p>1 PLACE DECIMALS +/-</p> <p>ANGLES</p> <p>SEE SWINGMASTER SPECIFICATION</p> <p>0-1 FOR TOLERANCES NOT SPECIFIED</p> <p>DIMENSIONS ARE IN INCHES</p> <p>DO NOT SCALE DRAWING</p> <p>SCALE</p>		<p>SWINGMASTER CORPORATION</p> <p>11415 MELROSE AVENUE</p> <p>FRANKLIN PARK, ILLINOIS 60131</p> <p>TURNTABLE LOCK-PIN INSTALLATION</p> <p>MODEL 361</p> <p>DRAWN BY: B.W.</p> <p>DATE: 1-24-89</p>	
		<p>DRAWING NO.</p> <p>D-207</p>	

SWINGMASTER CORPORATION

PARTS BOOK

MACHINE

SECTION

MODEL 361 SWINGLOADER

TURNTABLE

DESCRIPTION

TURNTABLE AND SWING BEARING INSTALLATION

TURNTABLE LOCK-PIN INSTALLATION

SWINGMASTER CORPORATION
11415 MELROSE AVENUE
FRANKLIN PARK, ILLINOIS 60131

TELEPHONE: (847) 451-1224
