



SECTION U

TURNTABLE

MACHINE

SECTION

1

MODEL SL180-13 SWINGLOADER

TURNTABLE

ASSEMBLY
NUMBER

DESCRIPTION

1806870 TURNTABLE INSTALLATION

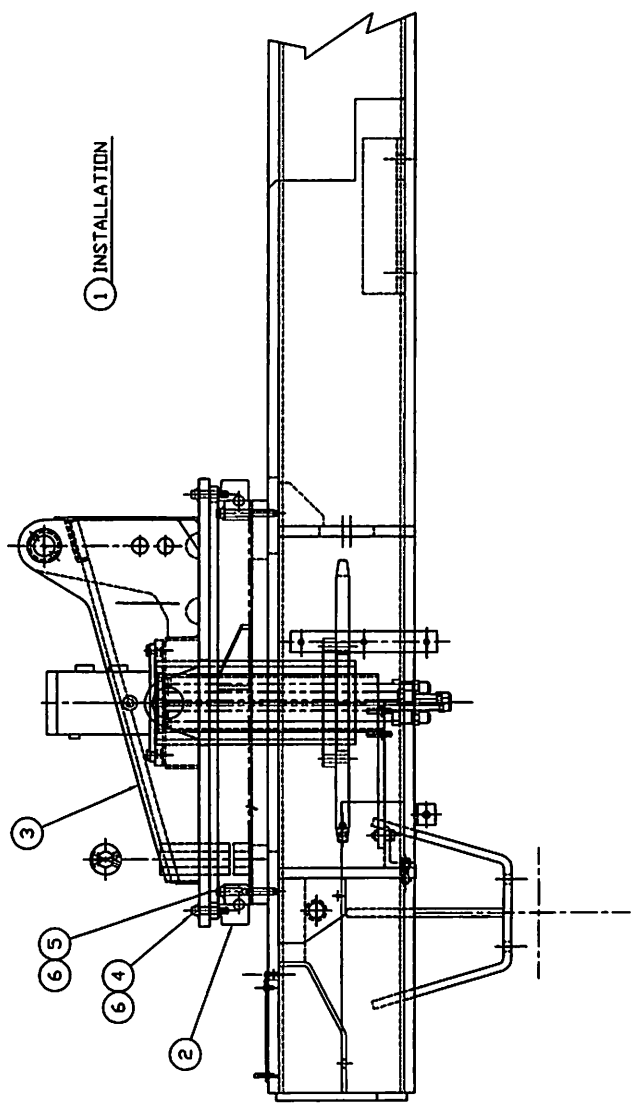
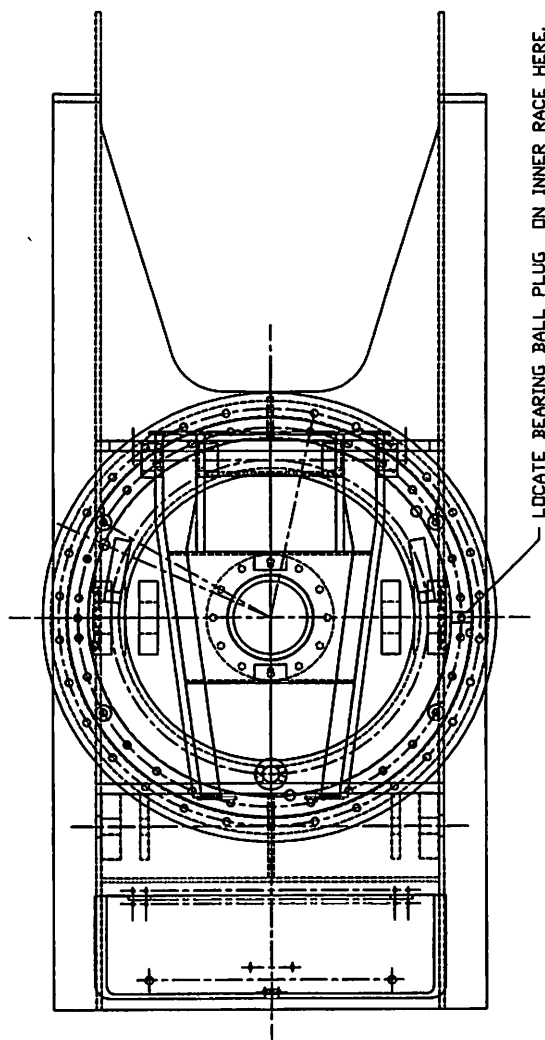
ITEM NO.	PART NUMBER	DESCRIPTION	QTY USED
2	1800367	TURNTABLE BEARING	1
3	1806882	TURNTABLE TOP WELDMENT	1
4	1800870	12 POINT FLANGED SCREW 5/8-11 X 2 3/4 LG	30
5	1806907	12 POINT FLANGED SCREW 5/8-11 X 4 1/2	30
6	1800556	5/8" FLAT WASHER	60

SWINGMASTER CORPORATION

11415 MELROSE AVENUE

FRANKLIN PARK, ILLINOIS 60131

TEL: (847) 451-1224



1 INSTALLATION

TOLERANCES HOLE SIZE UNLESS SPECIFIED FINISHES 2 PLACES DECIMALS $\pm .005$ 1 PLACE DECIMALS $\pm .01$ ANGLES SEE SWINGMASTER SPECIFICATION G-1 FOR TOLERANCES NOT SPECIFIED DIMENSIONS ARE IN INCHES UNLESS OTHERWISE SPECIFIED SCALE: 1/2"	SWINGMASTER CORPORATION 1113 HOLLOME AVENUE FRANKLIN PARK, ILLINOIS 60151 TURBTABLE INSTALLATION
	FOR MODEL 1B7CDO DRAWN BY J.K. DATE 11-18-08 DRAWING NO. D2-12