



# SWINGMASTER

**STM TIE MANAGER**





# FEATURES

# FEATURES



- ✓ Improvement to overall operating costs and long term reliability, as the machine is equipped with a NON DEF, TIER 4 FINAL, Cummins power unit. The following features maximize the smaller HP density, resulting in a lowered daily operating cost.
  - ✓ Tight control over the HP demands on the engine by creating a separate APU for the cab AC, hydraulic oil cooling and machine braking.
  - ✓ Fine control of the work and propel functions, achieved with SM programmed PLUS+1 main control valve and pump.
- ✓ Telescopic jib boom results in an improved reach diagram.
- ✓ Equipped with FAIL SAFE spring applied, hydraulic released brakes. No need to maintain a pneumatic system. Each wheel has an individual spring brake cylinder, improving redundancy and overall safety for the operator.
- ✓ Industry proven and stocked components chosen for the propel and braking systems, improving ease of maintenance and overall cost to the fleet.
- ✓ Integrated swings stops allow operator to manually choose to restrict swing radius, while operating near obstacles or live adjacent track.





# OPERATOR'S ENVIRONMENT

# OPERATOR'S ENVIRONMENT

**ELECTRICAL**

Pump Off | Work Travel | Low Speed | On | Travel Press | Travel Dir | B

J-1200

P-1201 (Black)	P-1202 (Grey)
1. Stick Boom Retract PSI	1. Ground/Shield
2. Grapple Rotate CW PSI	2. Power
3. Grapple Rotate CCW	3. CAN+
4. Grapple Rotate CCW	4. CAN-
5. Boom Lock	5. Propel Rev PSI
6. Propel Series/Parallel	6. N/A
7. Grapple Open	7. Pressure Filter
8. Grapple Close	8. Sensor Power 3
9. Telescopic Extend	9. Sensor Ground 3
10. Telescopic Retract	10. Parking Brake PSI
11. Power	11. System Pump PSI
12. Power	12. Stick Boom PSI

Settings | Fault | Menu



**Home 12:00**

LS Pump | W Work Travel | Low Speed | On | Travel Press | Travel Dir | B

Oil Pressure: 0 PSI

Engine RPM: 0 RPM

Hydr. Temp: 0°F

Engine Temp: 0°F

Volts: 00.0V

Fuel 75%

Hydraulic 50%

Settings | Fault | Menu | Default | Custom

- ✓ Unmatched operator control station with 12" touch display, loaded with customizable operator features to improve efficiency.
- ✓ Plus+1 system provides full point-to-point diagnostics, aiding in troubleshooting and maximizing machine uptime.

- ✓ 360 degree camera provides the operator with complete awareness of the immediate machine surroundings.
- ✓ Offset boom and centralized cab considerably improves visibility on both sides of the cab. This places the work location in the center of the swept front window, keeping the focus of the operator straight forward and reducing fatigue.
- ✓ Operator benefits from added safety during ingress and egress of the cab, with integrated stairwells and handrails rather than a ladder.
- ✓ Spacious cab provides the operator with an ergonomic workstation, including abundant storage locations. Additional features include; convenience console, cup holder, and charging/power ports.
- ✓ Upgraded operator cab comfort, with ducted heating, cooling, and defrost throughout. The integrate and fully enclosed, hydraulically driven AC unit minimizes maintenance.
- ✓ Integrated LED lighting on cab corners and stairwells improves visibility and safety for the operator and anyone working near the machine, especially in low light conditions.

**Machine**

Engine | Propel/Brake

**Work 12:00**

**DANGER**

Telescopic Boom: OK

Boom Lock/Head: OK

Swing: OK

Grapple: OK

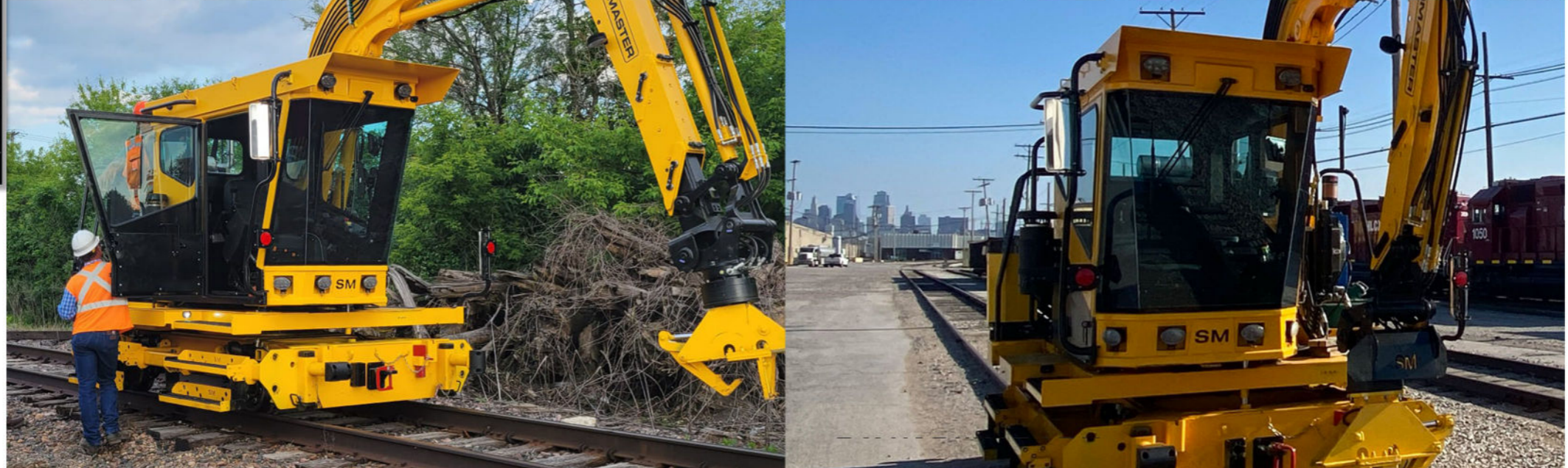
Grapple Rotate: OK

Stick Boom: OK

Main Boom: OK

Travel: OK

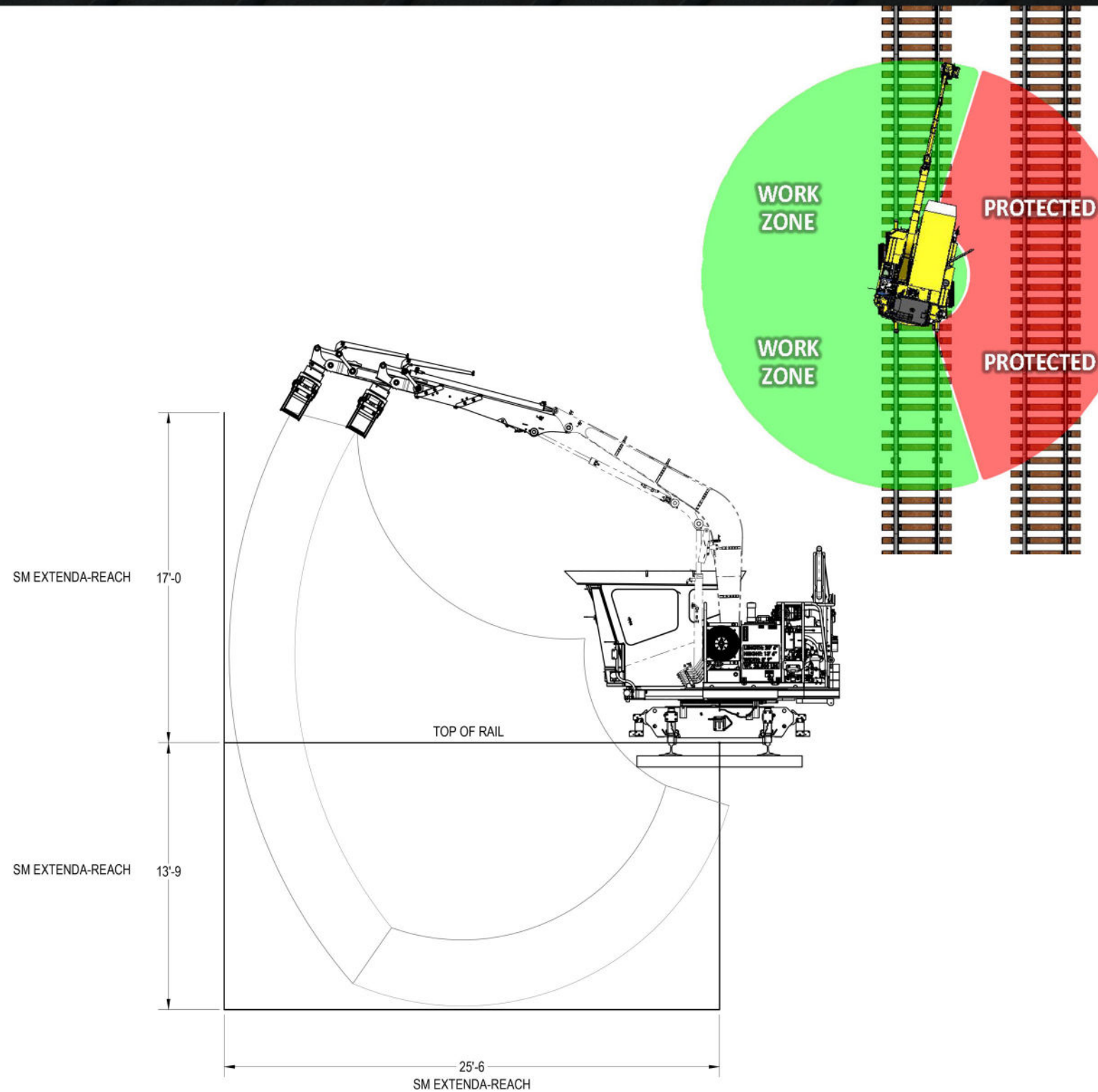
Save Settings





# SPECIFICATIONS

# SPECIFICATIONS



General	
Gross Vehicle Weight	29,000 lbs
Length	31'
Width	8' 11"
Height	10'
Wheelbase	6' 6"
Tailswing Clearance	6' 2"
Travel Speed	25 mph High 12 mph Low

Boom	
Boom Rotation	360° Continuous
Boom Swing Radius (Basic)	25' 6" Fully Extended

Engine	
Engine Make	Cummins QSF3.8 Tier 4 Final
Engine Type	In-line, 4 Cylinder
Displacement	229 cu.in. (3.8 L)
Advertised Horsepower	74 hp (55 kW) @ 2500 rpm
Peak Torque	295 lb-ft (400 N-m) @ 1300 rpm
Low Idle rpm	900 rpm
High Idle rpm	2500 rpm
Aspiration	Turbocharged Charge Air Cooled and EGR

Hydraulic System	
Main Pump	Danfoss Series 45 LS Axial Piston Pump
Main Relief Setting	2.250 psi
Triple Gear Pump	Parker 511 Series Gear Pump
Triple Pump Relief Settings	1,700 psi First Section 1,750 psi Second Section 650 psi Third Section
Control Valves	Danfoss PVG Proportional Valves

Electrical System	
Battery	Dual Size 27 Batteries, 1620 CCA combined
Voltage	24VDC
Ground	Negative
Alternator	110 amp

Capacities	
Fuel Tank	38 gal
Hydraulic Oil Tank	58 gal
Hydraulic Oil Cooler	55 hp @ 100 gpm





